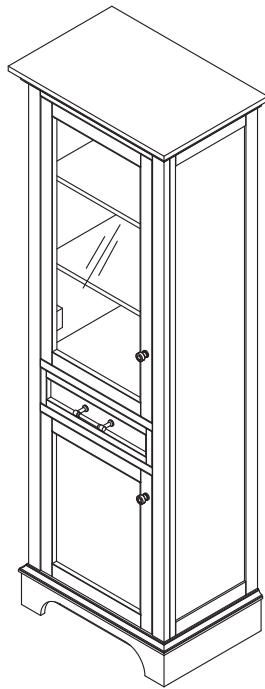


welcoming • sophisticated • inspiring



MODEL NUMBER	DESCRIPTION
2026FC-24-200	24" Dark Gray Finish Floor Cabinet
2026FC-24-201	24" White Finish Floor Cabinet
2026FC-24-202	24" Mahogany Finish Floor Cabinet
2026FC-24-205	24" Black Oak Finish Floor Cabinet
2026FC-24-242	24" Light Gray Finish Floor Cabinet

FLOOR CABINET

MODEL #2026FC-24-200; 2026FC-24-201; 2026FC-24-202;
2026FC-24-205; 2026FC-24-242

ATTACH YOUR RECEIPT HERE

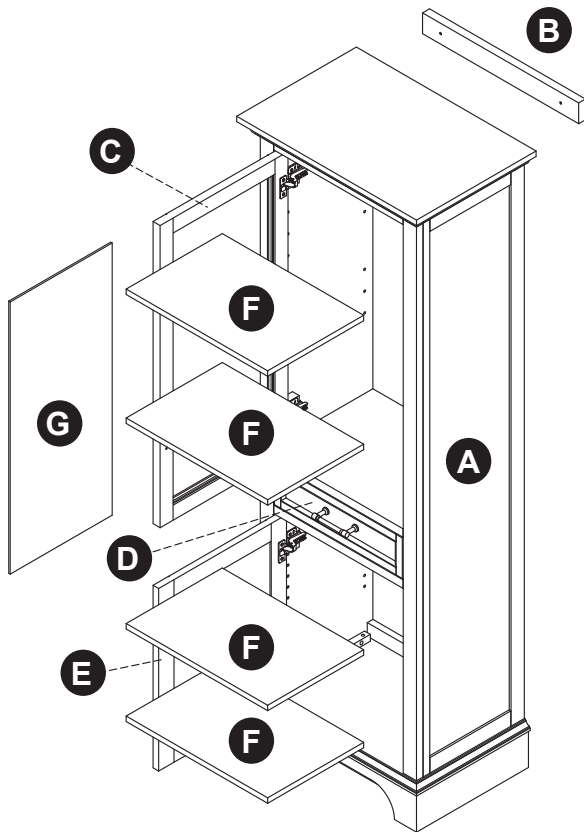
Serial Number _____ Purchase Date _____

Questions, problems, missing parts? Before returning to your retailer, call our customer service department at 1-866-439-9800, 8 a.m. - 8 p.m., EST, Monday - Sunday.

TABLE OF CONTENTS

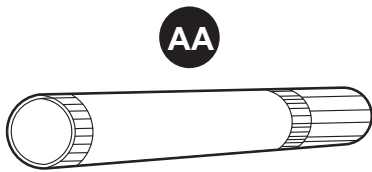
Package Contents.....	3
Hardware Contents.....	3
Safety Information.	3
Preparation	4
Assembly or Installation Instructions	4
Change Door Panels (Optional)	7
Care and Maintenance	7
Warranty	7
Replacement Parts List	8

PACKAGE CONTENTS

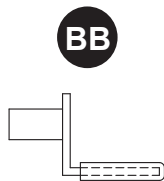


PART	DESCRIPTION	QUANTITY
A	Cabinet	1
B	Wall Mounting Spacer Bar (preassembled to Cabinet (A))	1
C	Upper Door (preassembled to Cabinet (A))	1
D	Drawer (preassembled to Cabinet (A))	1
E	Lower Door (preassembled to Cabinet (A))	1
F	Shelf	4
G	Wood Door Panel	1

HARDWARE CONTENTS (NOT SHOWN ACTUAL SIZE)



Touch-up Pen
Qty. 1



Shelf Pin
Qty. 16



SAFETY INFORMATION

Please read and understand this entire manual before attempting to assemble, operate or install this product.



WARNING

- Some steps are more easily handled with two adults.

CAUTION

- Before installation, carefully use scissors or utility knife to cut and unwrap all parts. Make sure you DO NOT discard the hardware.
- Use care when installing your new wall cabinet; take your time and follow the installation instructions closely.

KEEP THESE INSTRUCTIONS FOR FUTURE REFERENCE.

PREPARATION

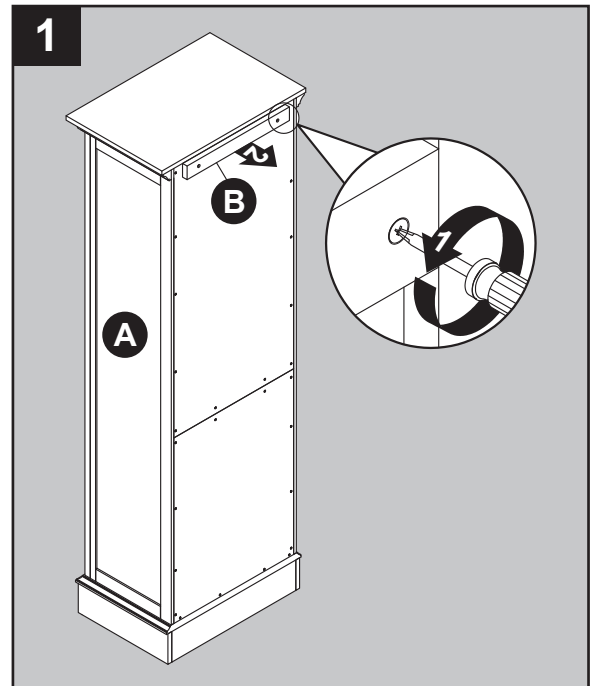
Before beginning assembly of product, make sure all parts are present. Compare parts with package contents list and hardware contents list. If any part is missing or damaged, do not attempt to assemble the product.

Estimated Assembly Time: 20 minutes (24 hours for silicone caulk to dry).

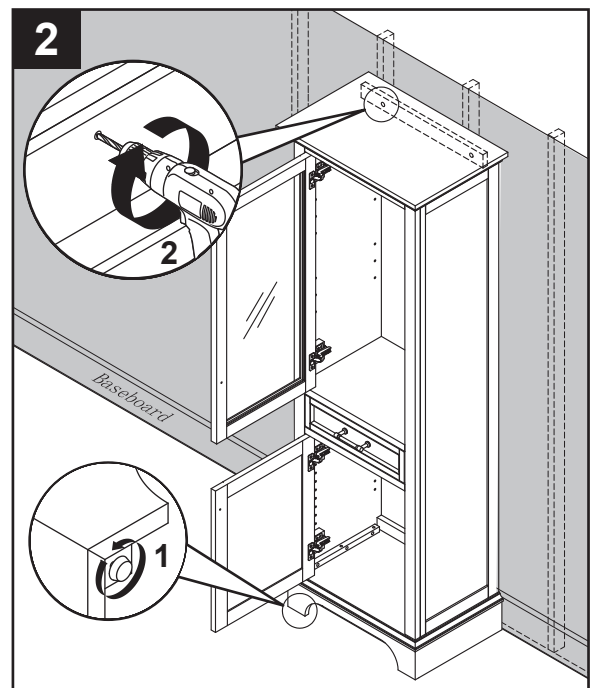
Tools Required for Assembly (not included): Phillips screwdriver, utility knife or scissors, silicone caulk, power drill with drill bit and measuring tape.

INSTALLATION INSTRUCTIONS

1. If there is baseboard at the location where you want to install floor cabinet then directly go to step 2. If there isn't a baseboard at the location, please remove the wall mounting spacer bar (B) from back of cabinet by unscrewing the screws on the back of the wall mounting spacer bar then go to step 2.



2. Clean area where the cabinet (A) will be permanently located prior to beginning installation, ensuring the cabinet (A) will not interfere with any plumbing or electrical lines once mounted.
Locate wall studs and mark locations. With the help of another adult, place completed cabinet assembly in its final location. Adjust the height of the cabinet (A) by twisting the adjustable leveler foot pins on the bottom of each leg. Twist clockwise to decrease height or twist counter-clockwise to increase cabinet height. Using hardware appropriate for your wall type such as cabinet screw or toggle bolt (not included), secure cabinet (A) to preferably two wall studs anywhere through the cabinet mounting bar. Be careful not to disturb any electrical or water lines that may be concealed in the wall.



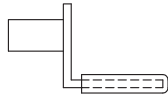
INSTALLATION INSTRUCTIONS

3. Insert shelf pins (BB) at desired height, ensuring they are level. Place shelves (F) on top of shelf pins (BB).

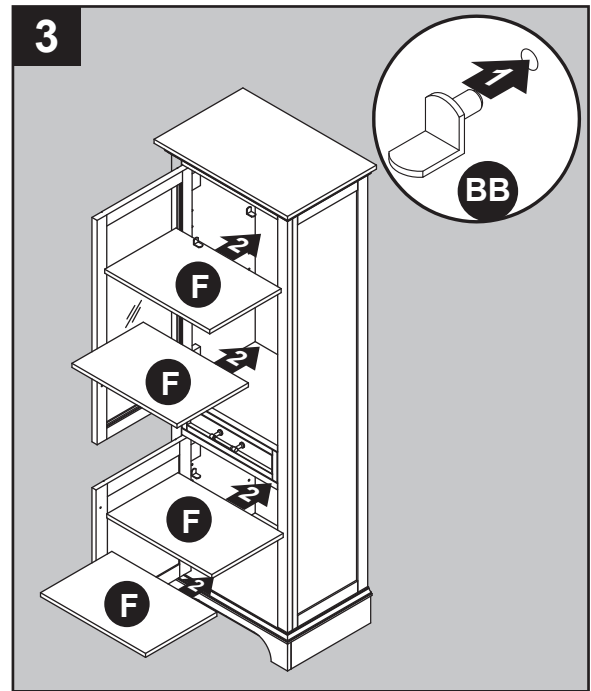
Hardware Used

BB

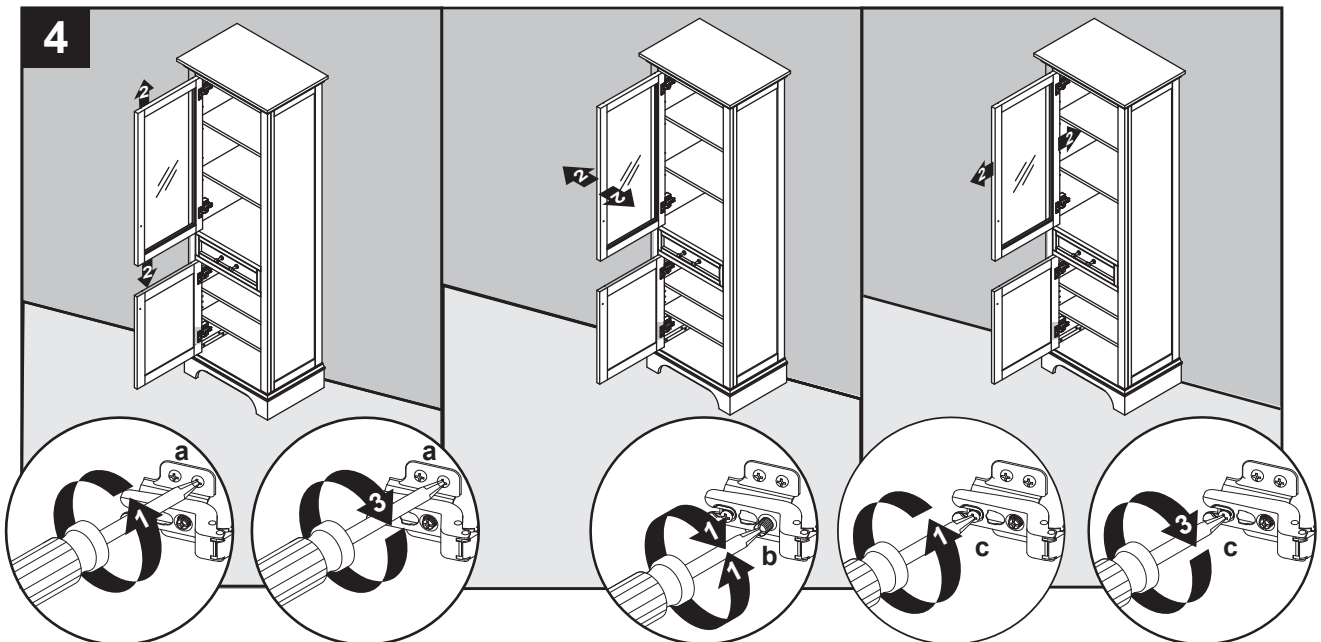
Shelf Pin



x 16

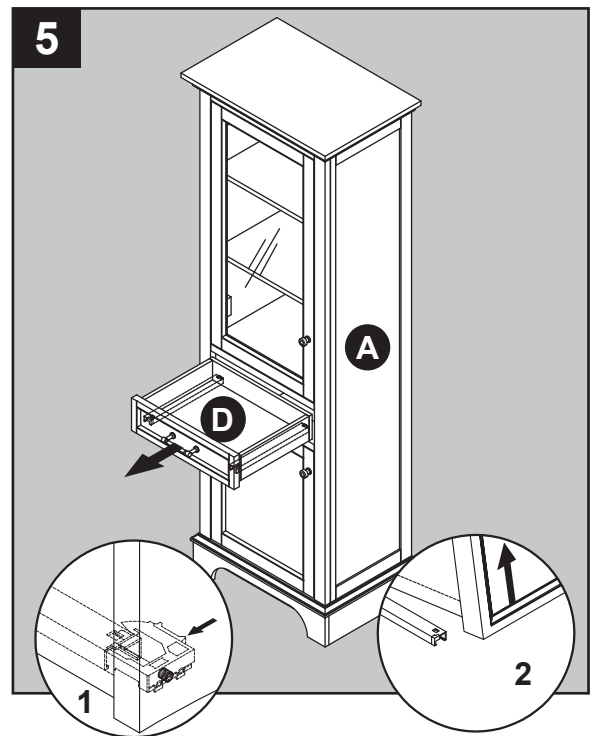


4. If you need to adjust the doors, do so in the following manner.
To adjust door up or down, loosen screws (a) on both hinges, adjust door, and retighten screws.
To adjust door left or right, turn screws (b) on both hinges, in or out.
To adjust door in or out, loosen screws (c) on both hinges, adjust door, and retighten screws.

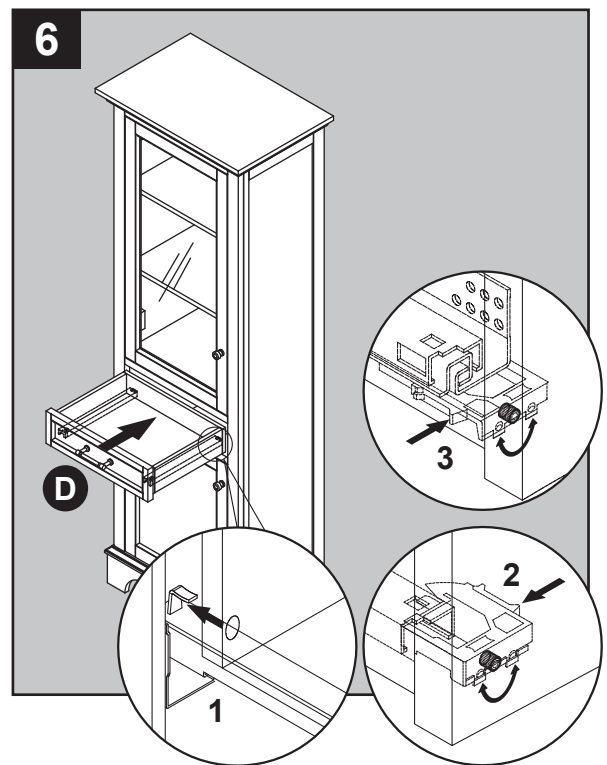


INSTALLATION INSTRUCTIONS

5. To remove drawer (D) from cabinet (A), fully extend drawers and locate the plastic levers on left and right sides of the metal glide tracks. Push the plastic levers, on both sides, at the same time. This will disengage the drawer box from the glides. Gently lift up on the drawer to remove it from the glide tracks. Set aside as these will be re-installed.



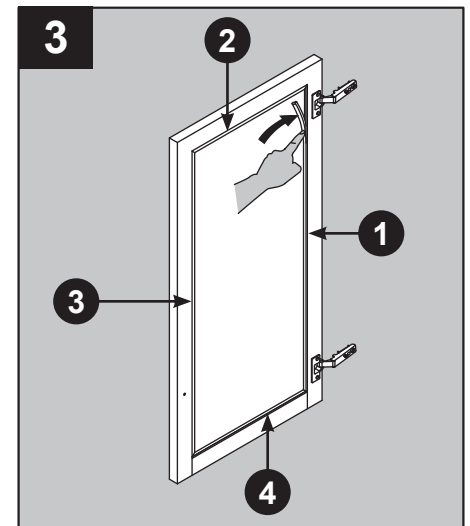
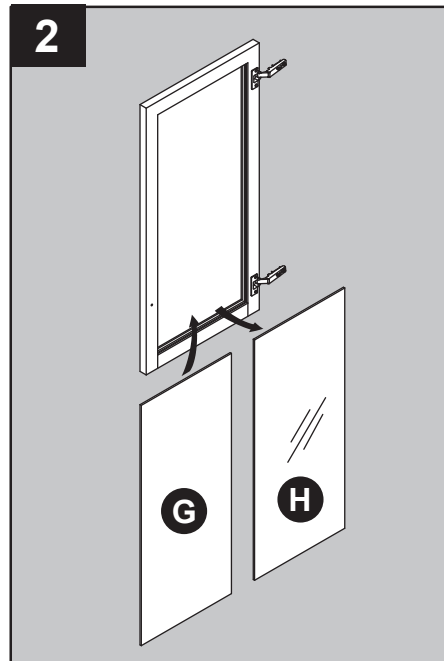
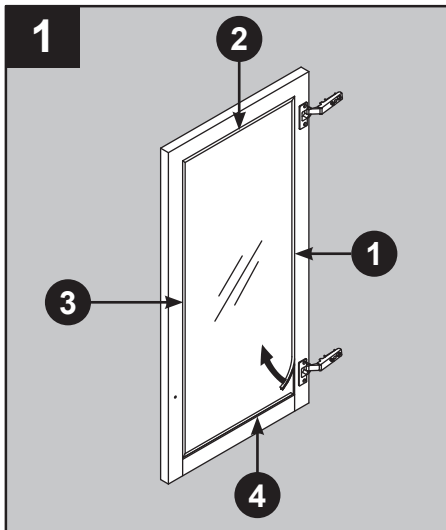
6. To re-install drawer (D). Fully extend lower drawer glide tracks. With the help of another adult, hold the extended glide in one hand and the drawer in the other. Gently place the back of the drawer box into the metal hook located on the back of the drawer track. Once the glide hook has been slide into the hole in the back of the drawer box, gently lower the drawer box down onto the extended glide tracks. At the same time depress both of the glide handles and allow the drawer box to fully rest on the glide tracks. Test to see if the drawer box is fully engaged. If the drawer box can still be lifted off the glide track then start again from the beginning. Never force anything or else damage to the drawer or glide hardware could result. The drawer location can be adjusted slightly up or down by twisting the adjuster knob next to the glide handles.



CHANGE DOOR PANELS (OPTIONAL)

Note: The pre-installed glass door panels can be switched out with the included wood door panels (G).

1. Remove the silicone trim along the outer edges of the glass panel on the inside of the door. Start at a corner and pull to remove the four pieces. Be careful not to damage the silicone trim as it will be used to secure the new panel.
2. Remove the glass panel from the door frame, then insert the included wood door panel (G).
3. Using your finger press the silicone trim back into place. Move around the outer edge of the panels until all four sides are secure.



CARE AND MAINTENANCE

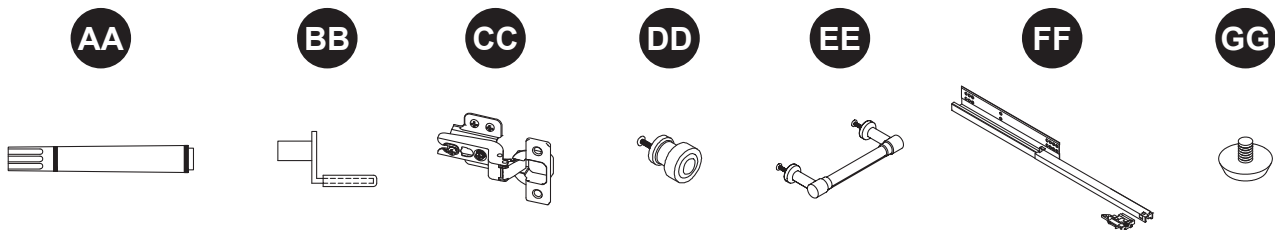
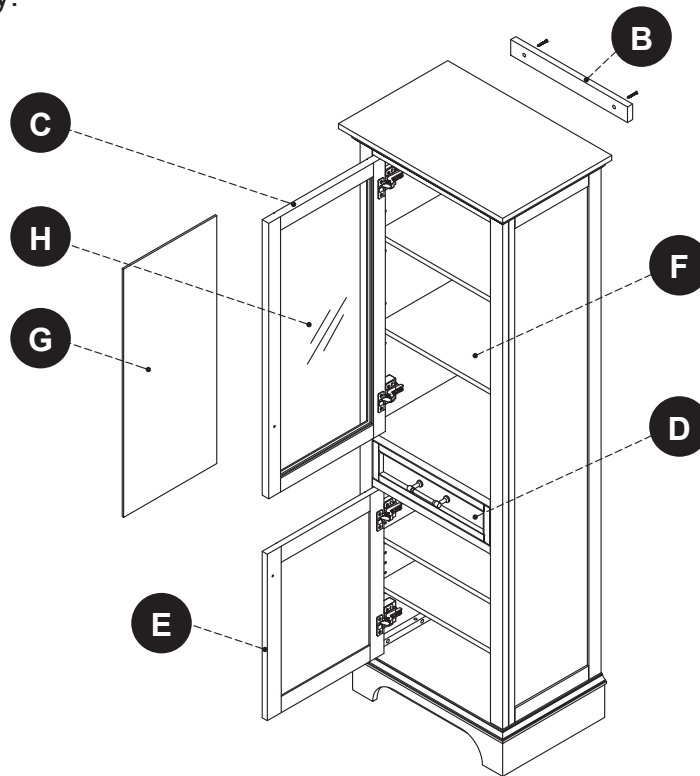
- Dust the Wall cabinet regularly with a soft, non-lint producing cloth or household dusting product.
- You can clean the Wall cabinet with a gentle, non-abrasive household cleaner.
- Make sure to dry the wood immediately with a soft cloth or towel.
- Tips for using touch-up pen (AA): For scratches, stroke in direction of scratch. Rub off excess colorant promptly with a soft cloth.

WARRANTY

The manufacturer warrants this item against defects in materials and workmanship for a period of one (1) year from the date of original retail purchase. This warranty applies only to the original purchaser. This warranty does not apply to any damage on the product by accident, misuse, or modified, improper installation or by affixing accessories not produced by the manufacturer. The manufacturer is not accountable whatsoever for product installation during the warranty period. There is no further expressed warranty. The manufacturer shall not be legally responsible for incidental, consequential or special damages arising at or in connection with product use or performance except as may otherwise be accorded by law. The manufacturer disclaims any and all implied warranties.

REPLACEMENT PARTS LIST FOR 2026FC-24-200

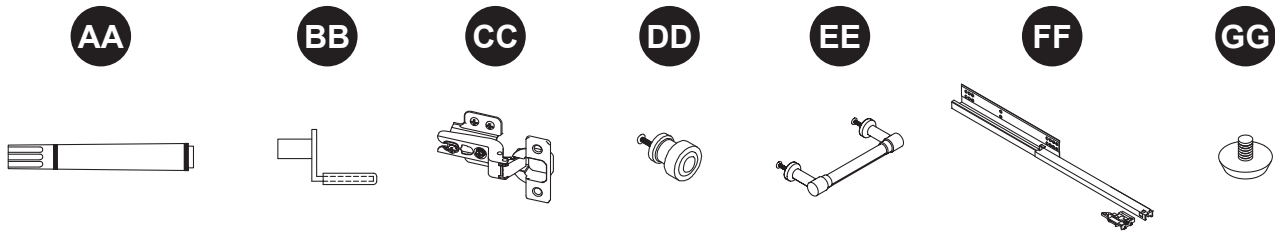
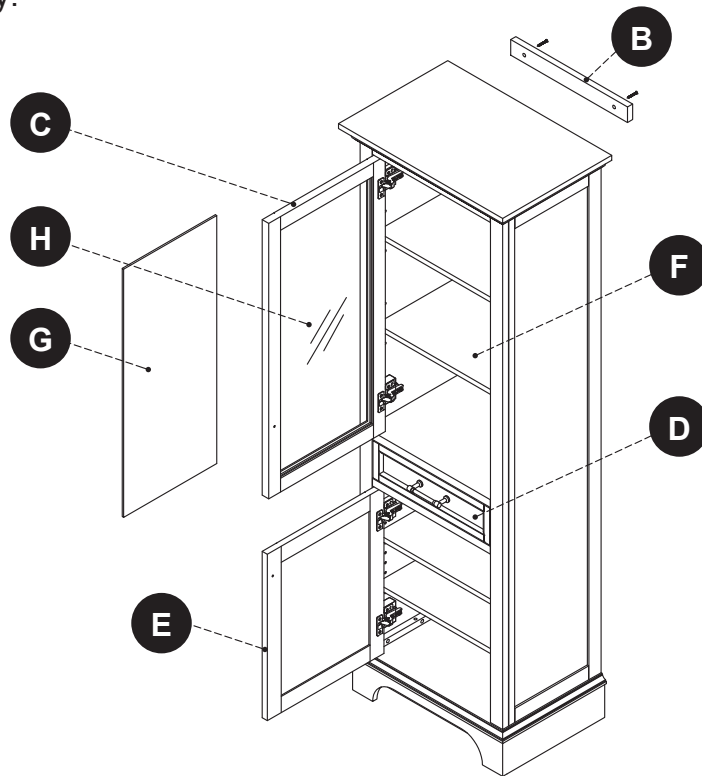
For replacement parts, call our customer service department at 1-866-439-9800, 8 a.m. - 8 p.m., EST, Monday - Sunday.



PART	DESCRIPTION	PART#
B	Wall Mounting Spacer Bar	2026FC-24-200-001
C	Upper Door	2026FC-24-200-002
D	Drawer Front	2026FC-24-200-003
E	Lower Door	2026FC-24-200-004
F	Shelf	2026FC-24-200-005
G	Wood Door Panel	2026FC-24-200-006/007
H	Glass Door Panel	
AA	Touch-up pen	OX-0180Z
BB	Shelf pin	B1044
CC	Hinge	C-90-107
DD	Knob (with screw)	CF-D25-005-BN
EE	Pull (with screw)	CF-96-004-BN
FF	Glide Track Set	PUDTC-12x3-Handle
GG	Leveler	T-1007

REPLACEMENT PARTS LIST FOR 2026FC-24-201

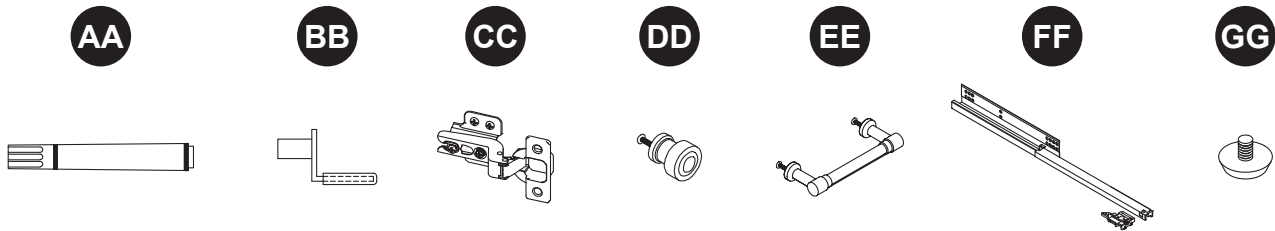
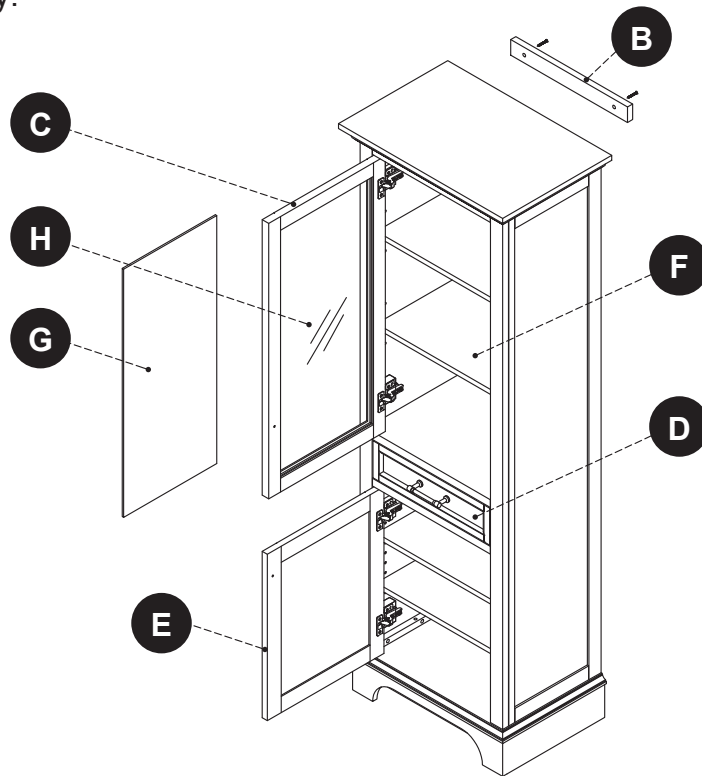
For replacement parts, call our customer service department at 1-866-439-9800, 8 a.m. - 8 p.m., EST, Monday - Sunday.



PART	DESCRIPTION	PART#
B	Wall Mounting Spacer Bar	2026FC-24-201-001
C	Upper Door	2026FC-24-201-002
D	Drawer Front	2026FC-24-201-003
E	Lower Door	2026FC-24-201-004
F	Shelf	2026FC-24-201-005
G	Wood Door Panel	2026FC-24-201-006/007
H	Glass Door Panel	
AA	Touch-up pen	OF-0010
BB	Shelf pin	B1044
CC	Hinge	C-90-107
DD	Knob (with screw)	CF-D25-005-BN
EE	Pull (with screw)	CF-96-004-BN
FF	Glide Track Set	PUDTC-12x3-Handle
GG	Leveler	T-1007

REPLACEMENT PARTS LIST FOR 2026FC-24-202

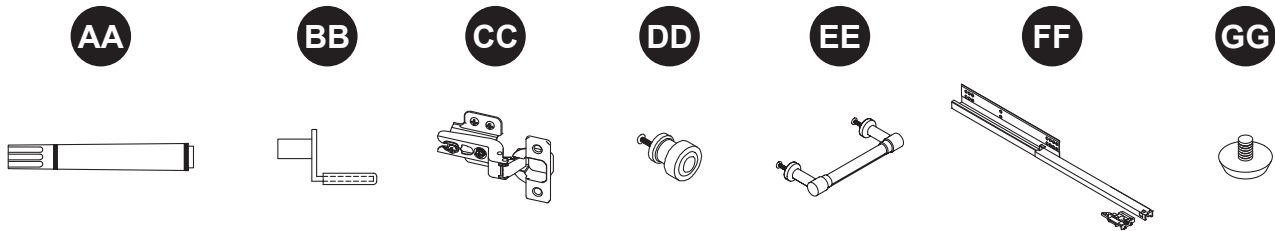
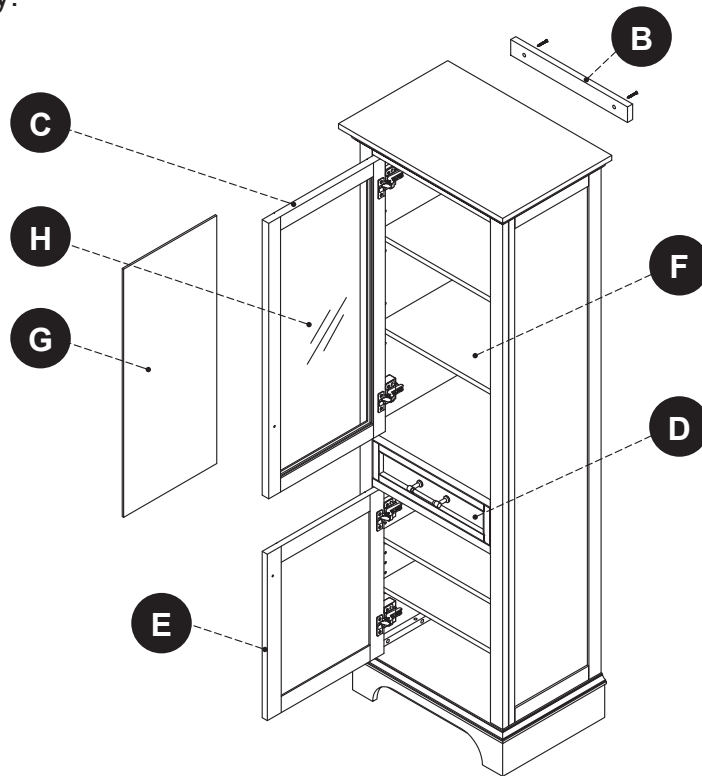
For replacement parts, call our customer service department at 1-866-439-9800, 8 a.m. - 8 p.m., EST, Monday - Sunday.



PART	DESCRIPTION	PART#
B	Wall Mounting Spacer Bar	2026FC-24-202-001
C	Upper Door	2026FC-24-202-002
D	Drawer Front	2026FC-24-202-003
E	Lower Door	2026FC-24-202-004
F	Shelf	2026FC-24-202-005
G	Wood Door Panel	2026FC-24-202-006/007
H	Glass Door Panel	
AA	Touch-up pen	W3350A
BB	Shelf pin	B1044
CC	Hinge	C-90-107
DD	Knob (with screw)	CF-D25-005-BN
EE	Pull (with screw)	CF-96-004-BN
FF	Glide Track Set	PUDTC-12x3-Handle
GG	Leveler	T-1007

REPLACEMENT PARTS LIST FOR 2026FC-24-205

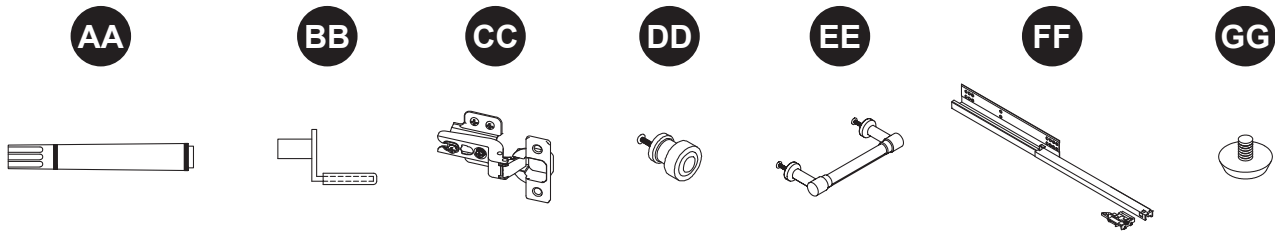
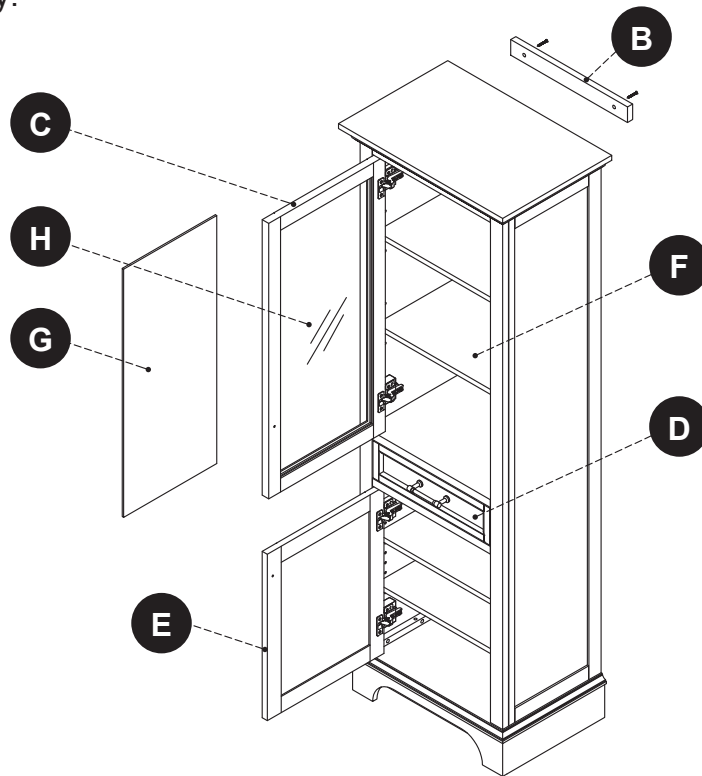
For replacement parts, call our customer service department at 1-866-439-9800, 8 a.m. - 8 p.m., EST, Monday - Sunday.



PART	DESCRIPTION	PART#
B	Wall Mounting Spacer Bar	2026FC-24-205-001
C	Upper Door	2026FC-24-205-002
D	Drawer Front	2026FC-24-205-003
E	Lower Door	2026FC-24-205-004
F	Shelf	2026FC-24-205-005
G	Wood Door Panel	2026FC-24-205-006/007
H	Glass Door Panel	
AA	Touch-up pen	W3504A
BB	Shelf pin	B1044
CC	Hinge	C-90-107
DD	Knob (with screw)	CF-D25-005-BN
EE	Pull (with screw)	CF-96-004-BN
FF	Glide Track Set	PUDTC-12x3-Handle
GG	Leveler	T-1007

REPLACEMENT PARTS LIST FOR 2026FC-24-242

For replacement parts, call our customer service department at 1-866-439-9800, 8 a.m. - 8 p.m., EST, Monday - Sunday.



PART	DESCRIPTION	PART#
B	Wall Mounting Spacer Bar	2026FC-24-242-001
C	Upper Door	2026FC-24-242-002
D	Drawer Front	2026FC-24-242-003
E	Lower Door	2026FC-24-242-004
F	Shelf	2026FC-24-242-005
G	Wood Door Panel	2026FC-24-242-006/007
H	Glass Door Panel	
AA	Touch-up pen	OF-0120R
BB	Shelf pin	B1044
CC	Hinge	C-90-107
DD	Knob (with screw)	CF-D25-005-BN
EE	Pull (with screw)	CF-96-004-BN
FF	Glide Track Set	PUDTC-12x3-Handle
GG	Leveler	T-1007