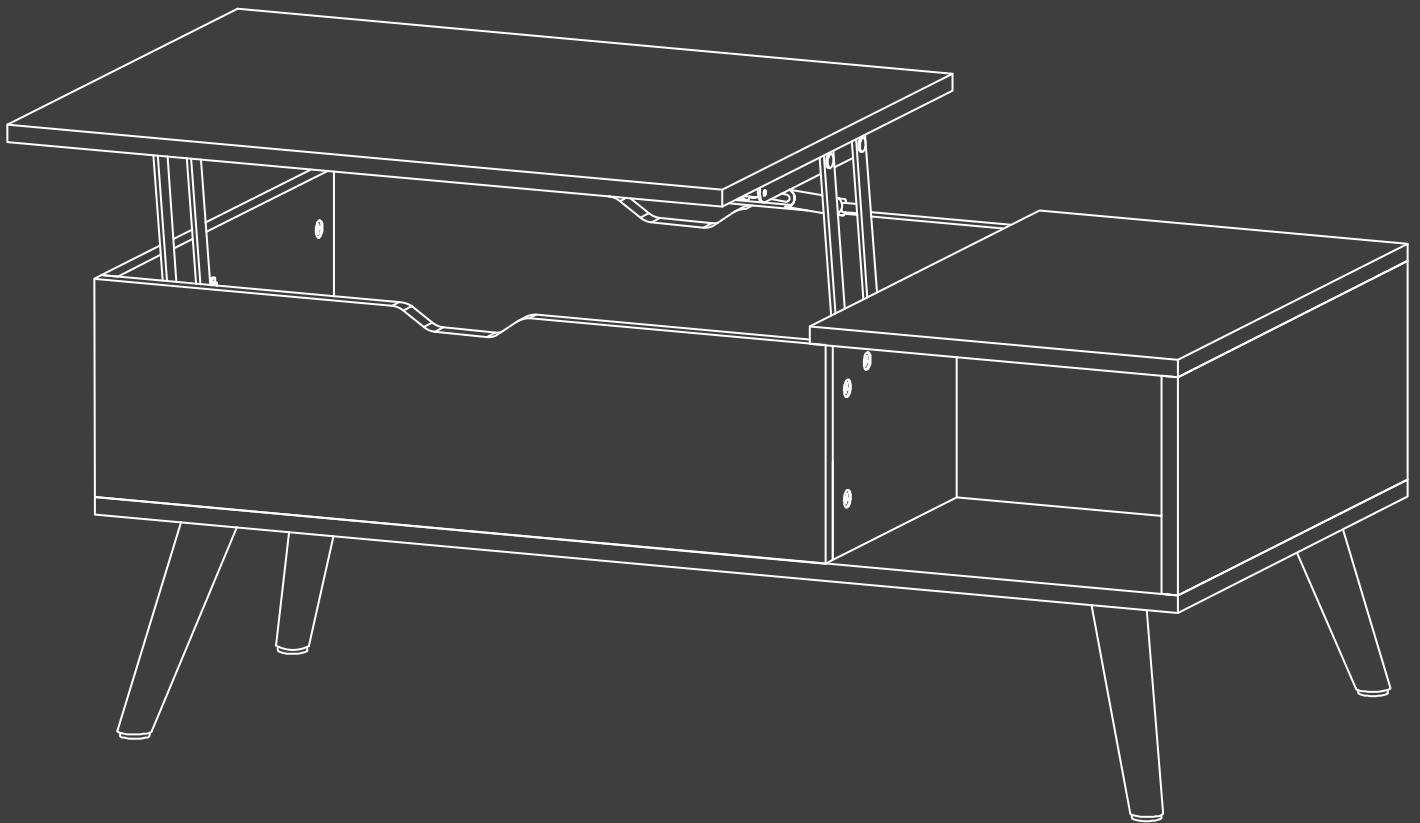


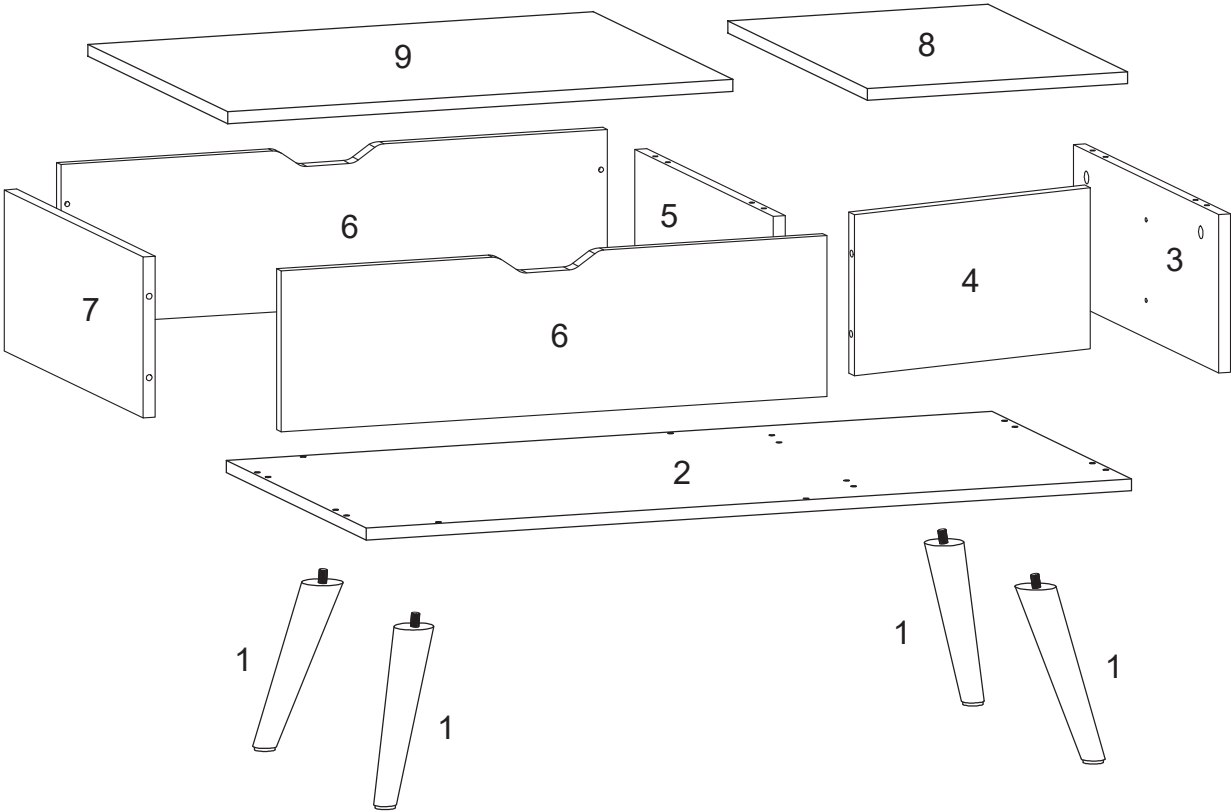
Lift Top Coffee Table


Instruction Manual

T-LIFT-001




1 Component List





A X16

Derrick Screw



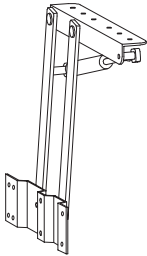
B X10

Wooden Pin



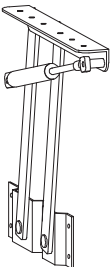
C X16

Eccentric Wheel



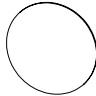
D X1

Left Lifter



E X1

Right Lifter




F X16

Cover-up Sticker




G X4

Solid Wood Foot Connector



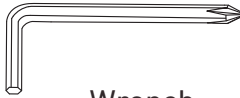
H X48

Bolts



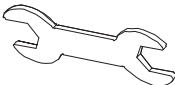
I X10

Bolts



J X1
M4

Wrench



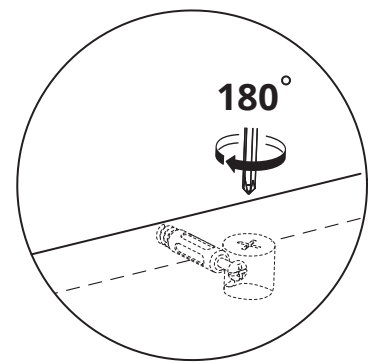
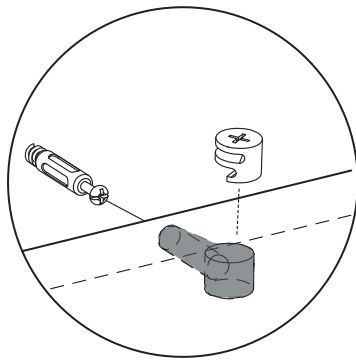
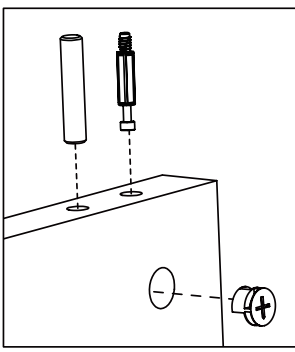
K X1

Wrench



L X4

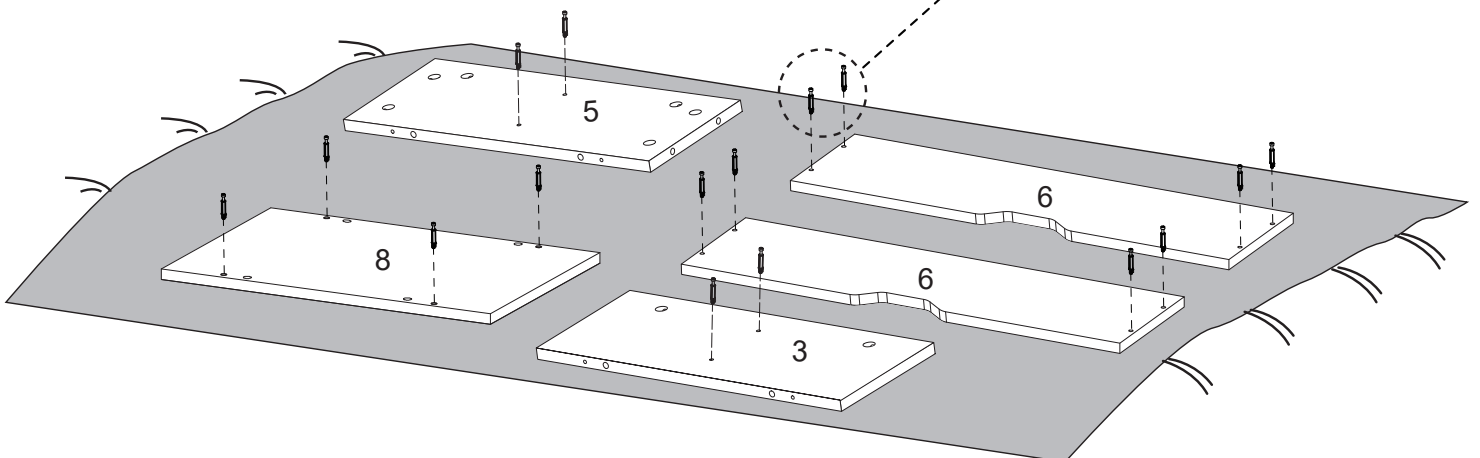
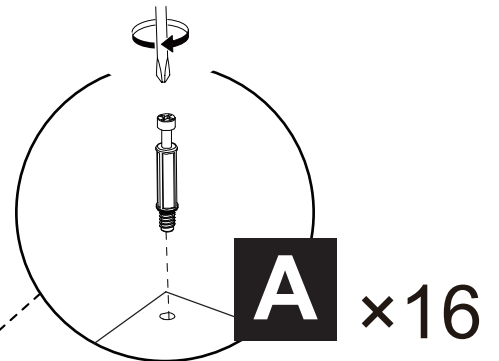
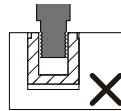
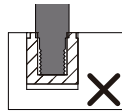
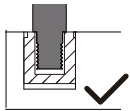
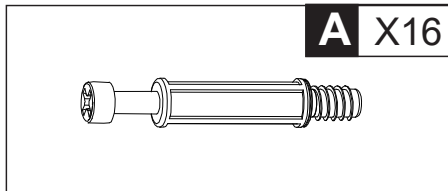
Silicone Foot Pad



NOTE:

- 1.As shown, make sure each part is in the correct position.
- 2.Make sure the gap of the Eccentric Wheel is aligned with the Derrick Screw, and then tighten it completely.

Step 1

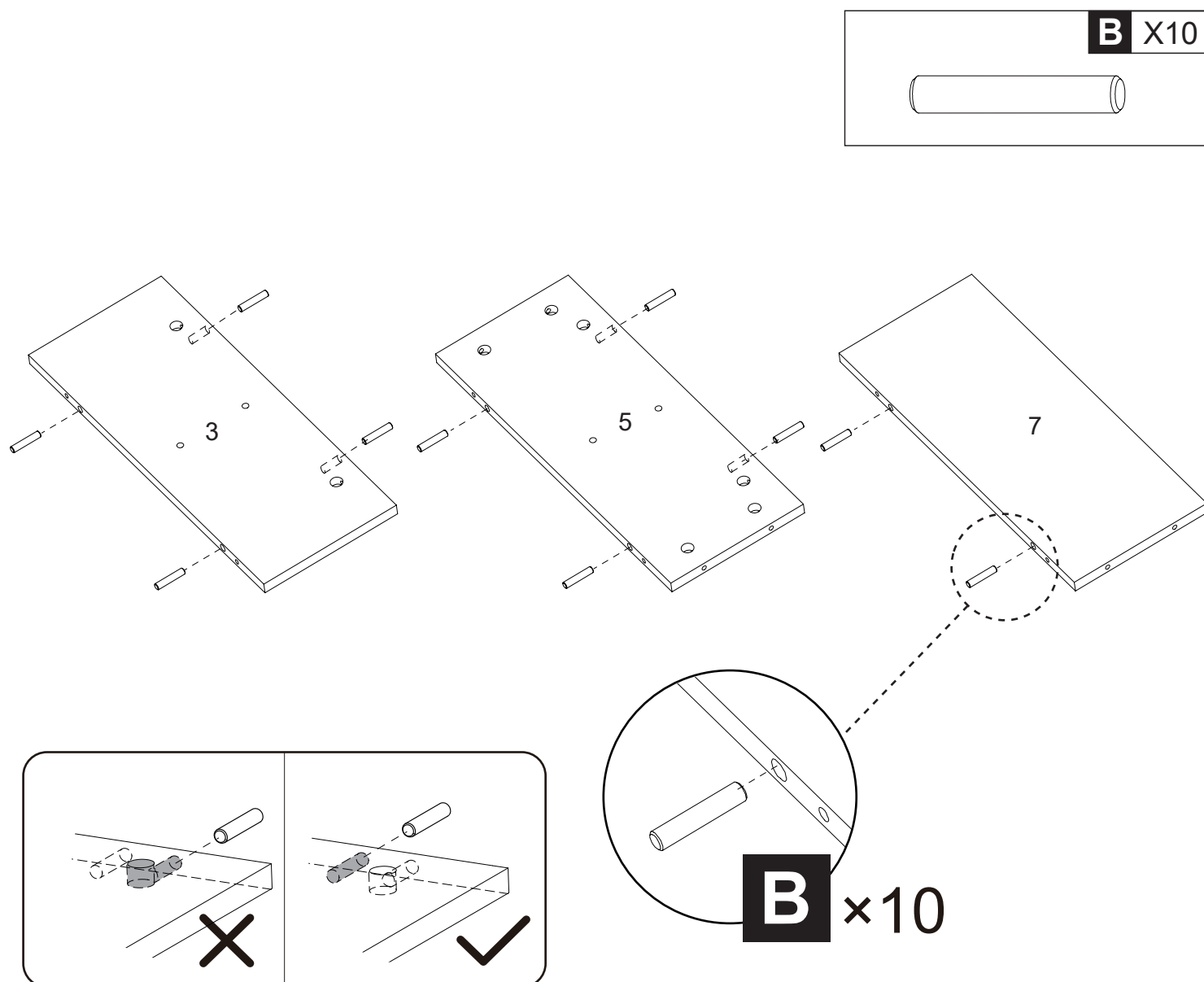


Fix Derrick Screw (A)*16 to Board (3), (5), (6)*2, (8) as shown.

NOTE:

1. Put a blanket under the board to avoid scratch or damage.
2. Please do not screw Derrick Screw (A) too deep or too shallow.

Step 2

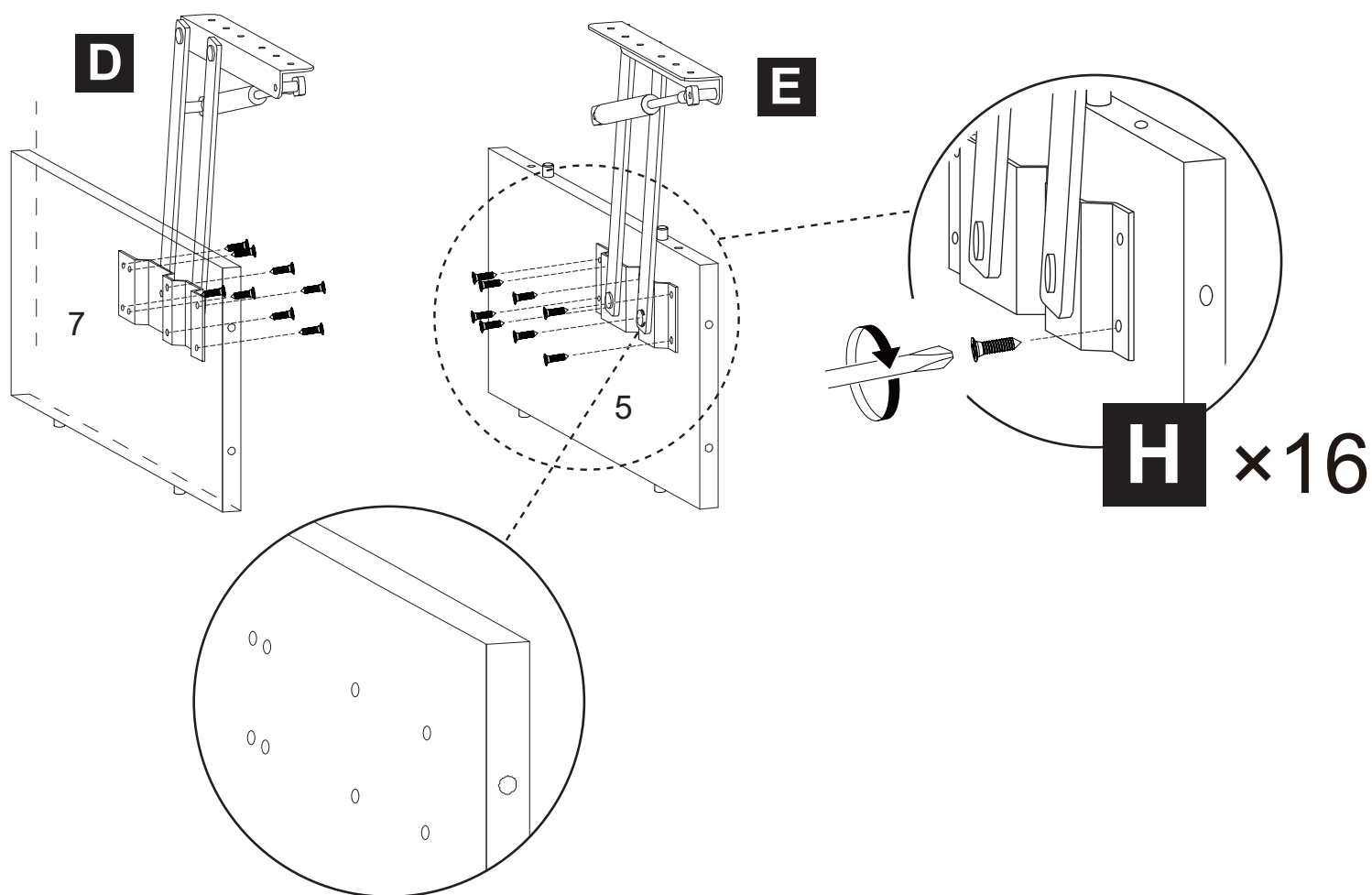
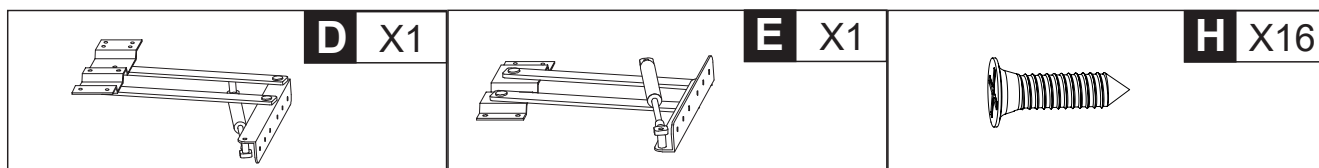


Attach Wooden Pin **(B)*10** to Board **(3)**, **(5)** and **(7)**.

NOTE:

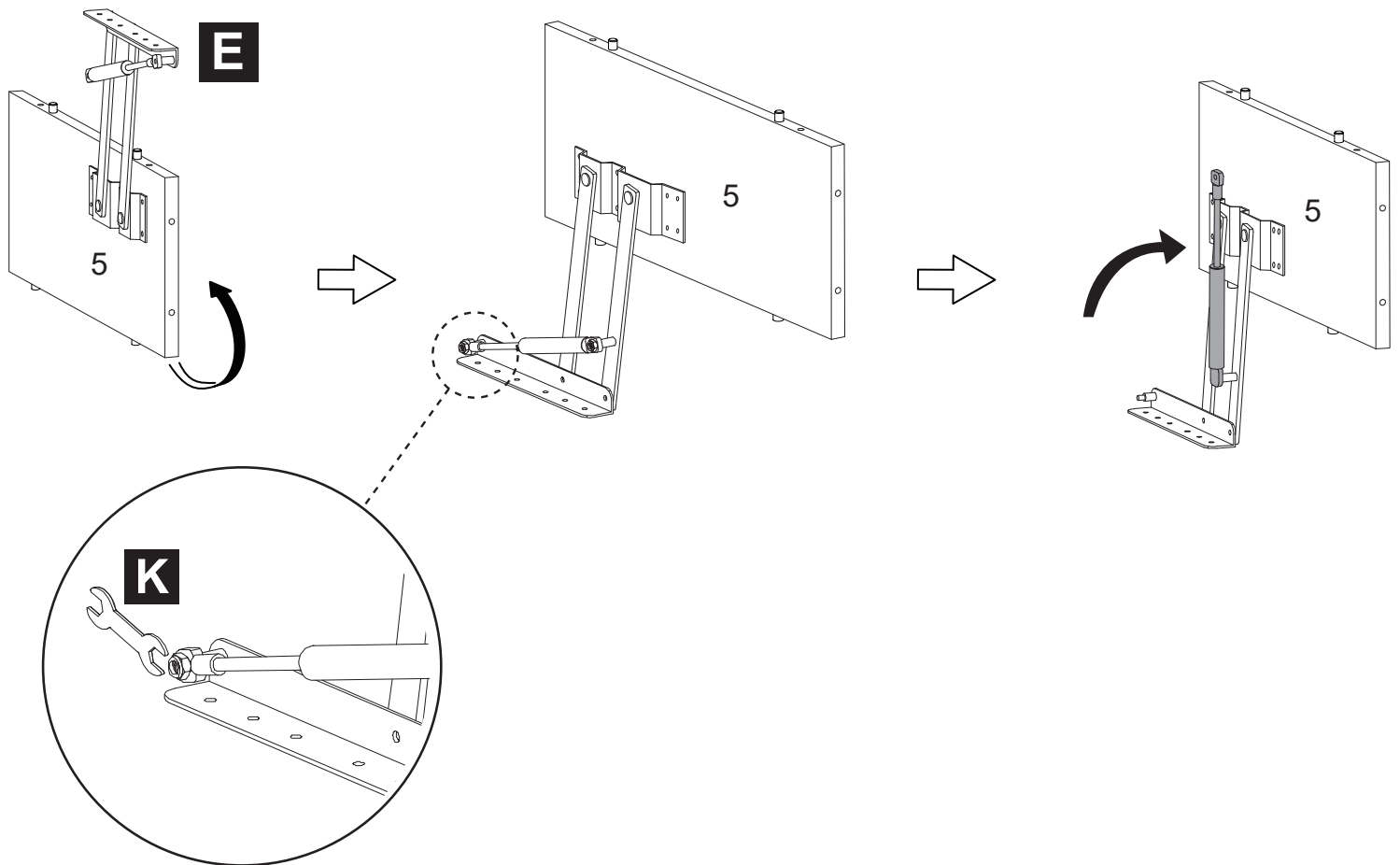
Install Wooden Pin **(B)** into the inner holes, not the outer holes.

Step 3



Using Bolts **(H)*16**, install Left Lifter **(D)** to the pre-drilled holes on the inside of Board **(7)**, and Right Lifter **(E)** to the pre-drilled holes on the inside of Board **(5)**.

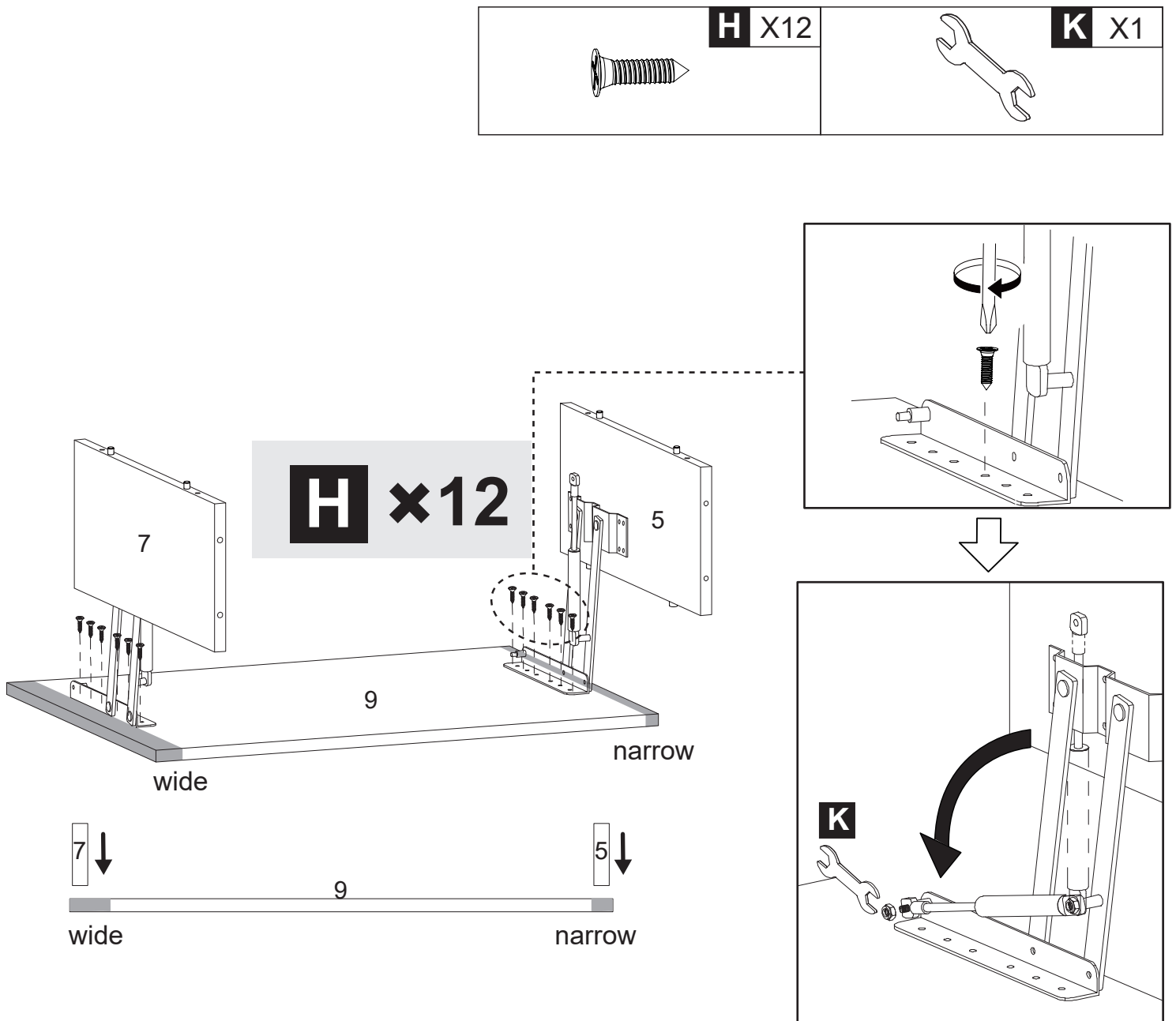
Step 4



With Right Lifter **(E)** facing down, use Wrench **(K)** to unscrew the nut at the connection, then lift the damping rod.

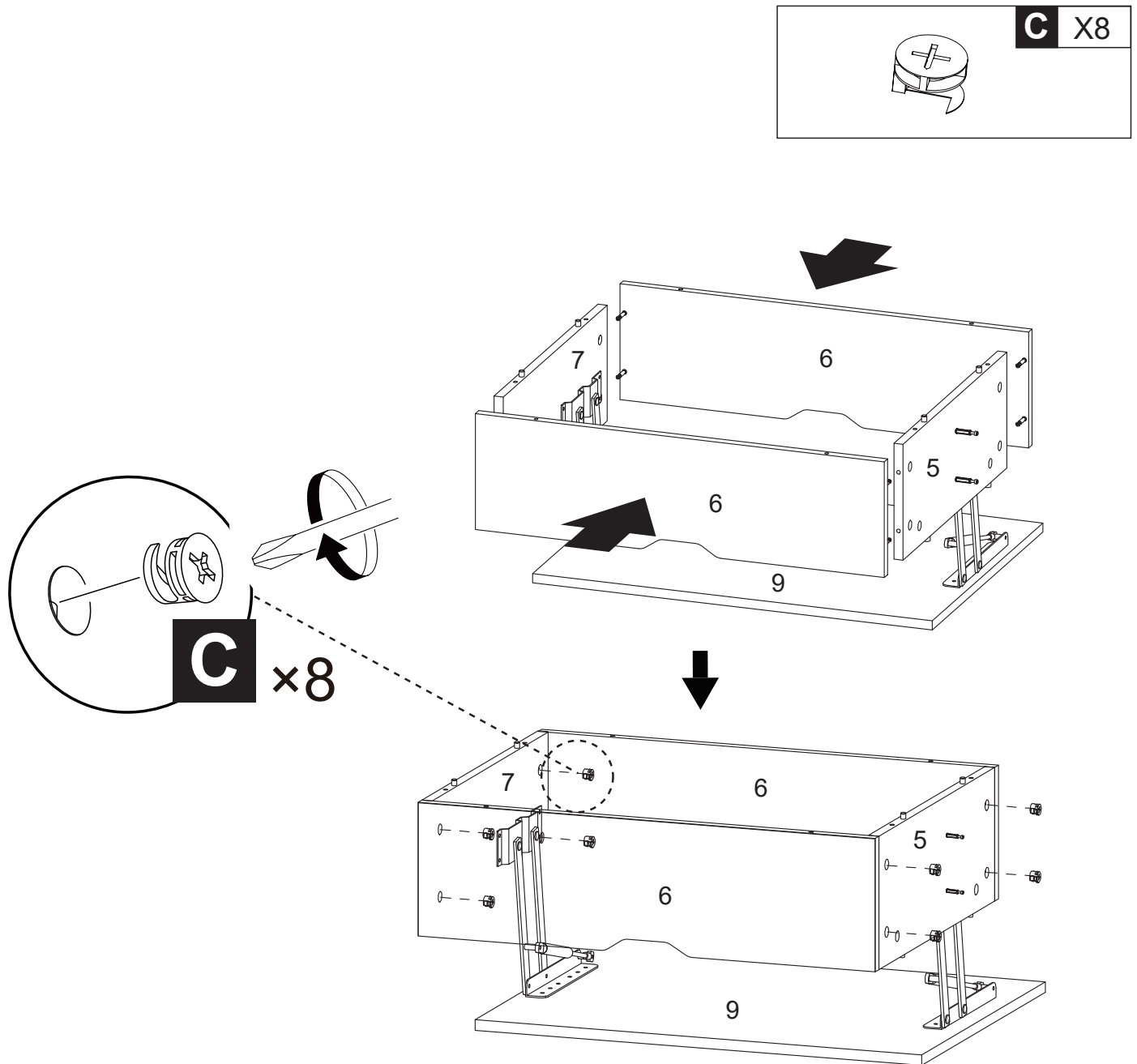
Prepare Left Lifter **(D)** and Board **(7)** in the same way.

Step 5



Using Bolts **(H)*12**, install Left Lifter **(D)** to the “wide” side of Board **(9)** and Right Lifter **(E)** to the “narrow” side of Board **(9)**, then lower the damping rod and re-tighten the nut with Wrench **(K)**.

Step 6

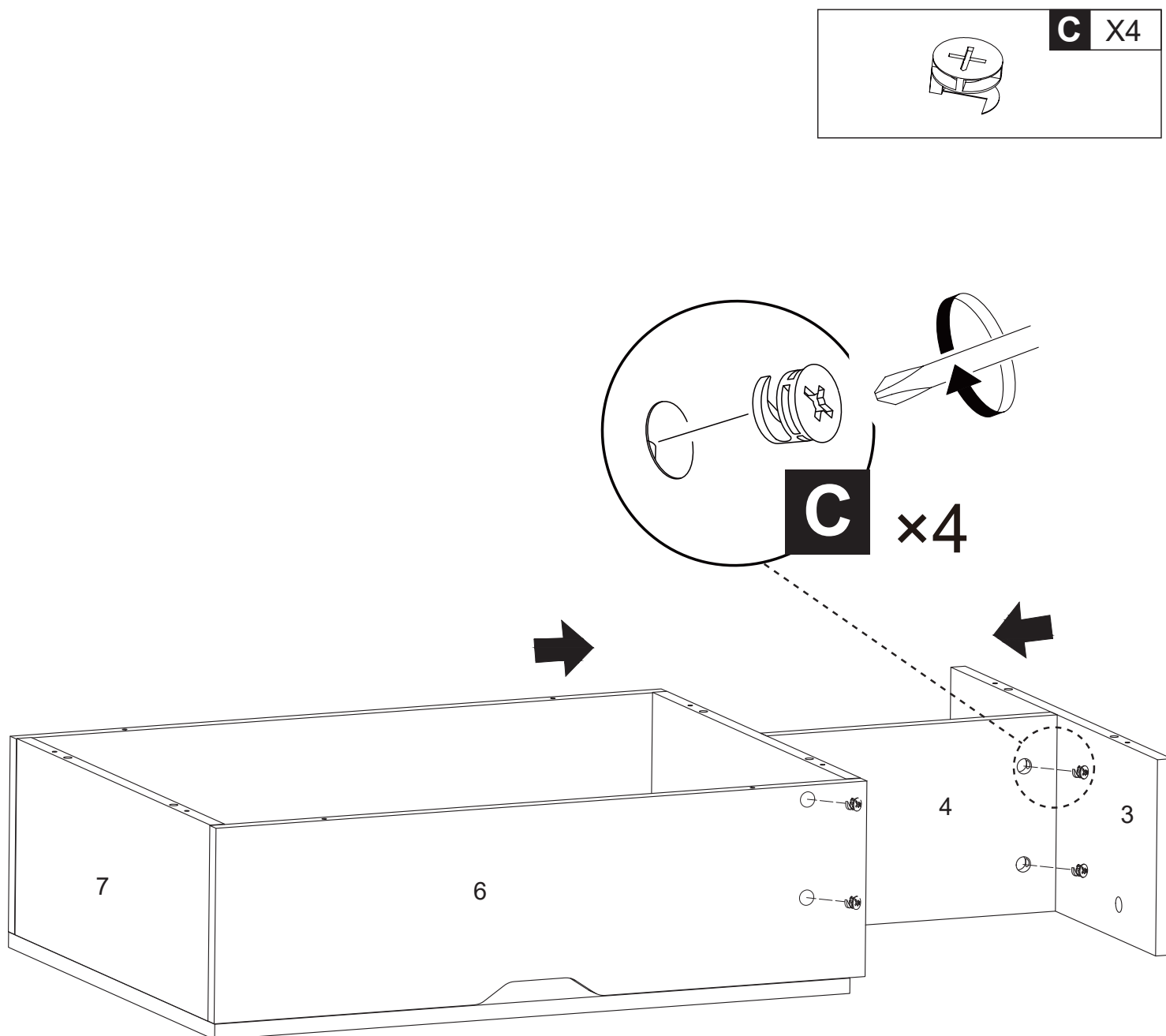


With the notched side of Board **(6)** facing down, install Board **(6)*2** to Boards **(5&7)** with Eccentric Wheel **(C)*8**.

NOTE:

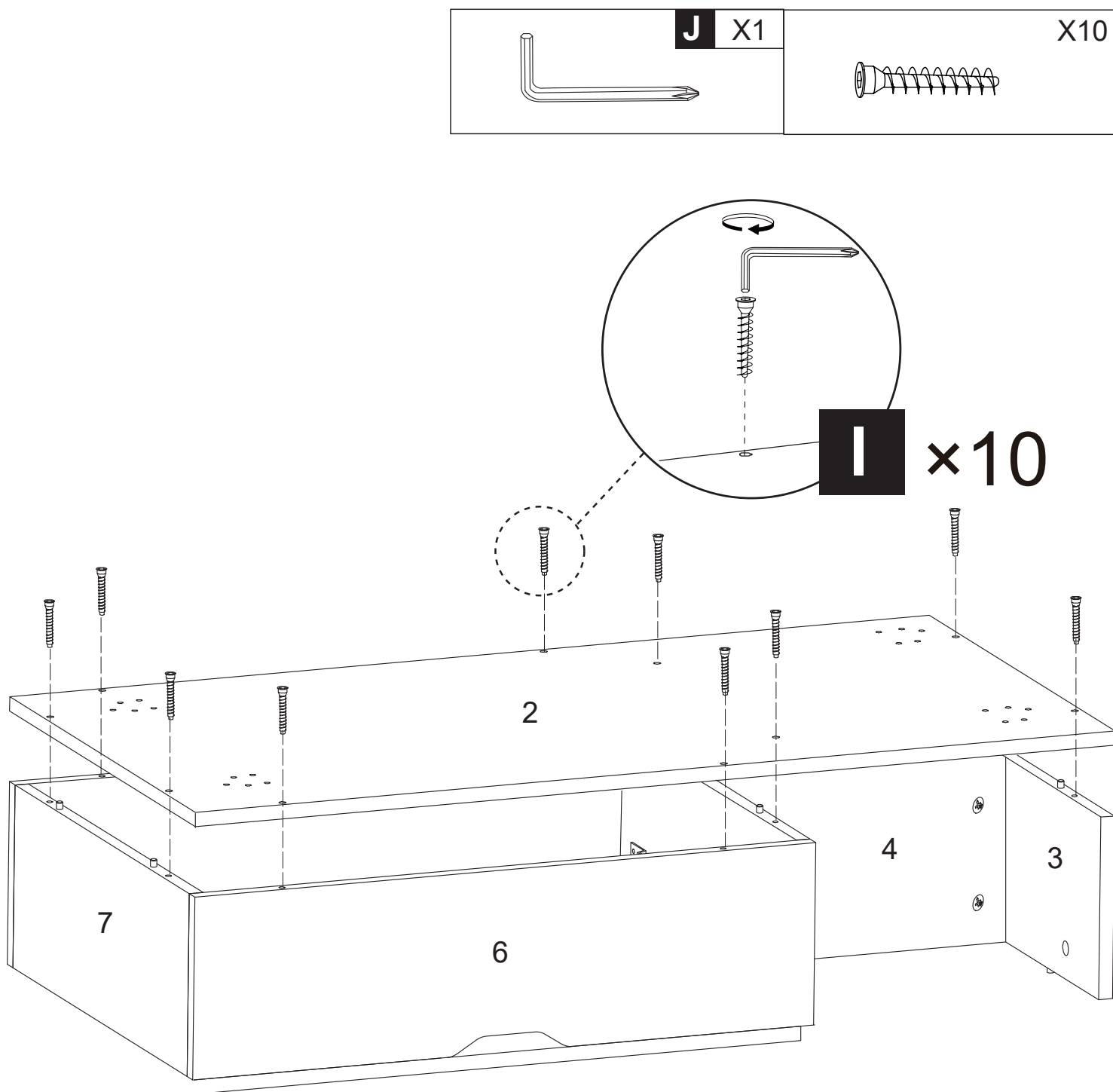
The screw holes of Board **(7)** are on the inside and the screw holes of Board **(5)** are on the outside.

Step 7



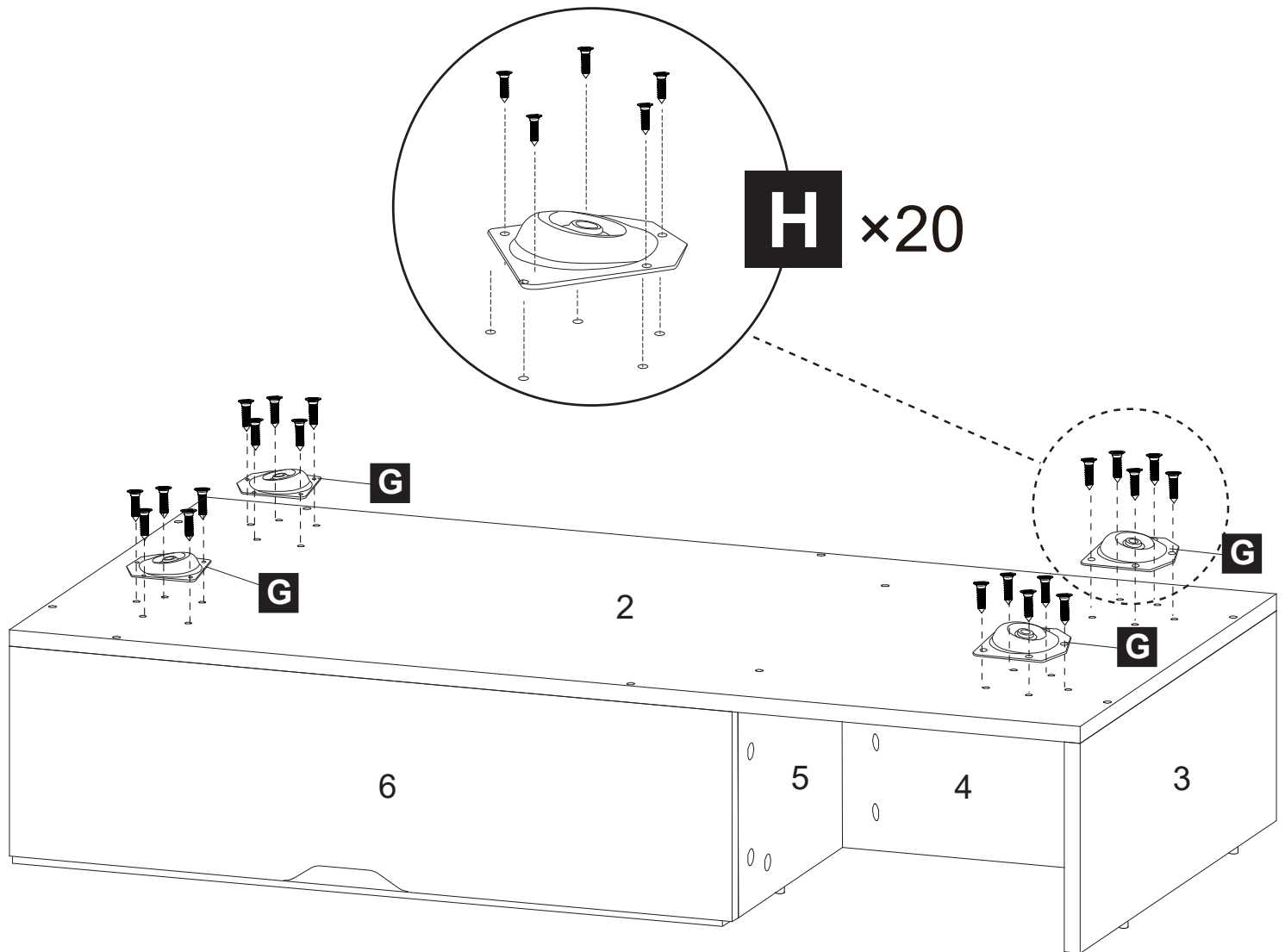
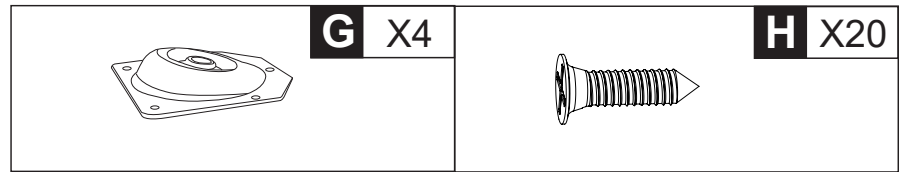
As shown, install Board **(4)** to Board **(5)**, and install Board **(3)** to Board **(4)** with Eccentric Wheel **(C)*4**.

Step 8



Using Wrench (**J**), install Board (**2**) to the completed frame with Bolts (**I**)***10**.

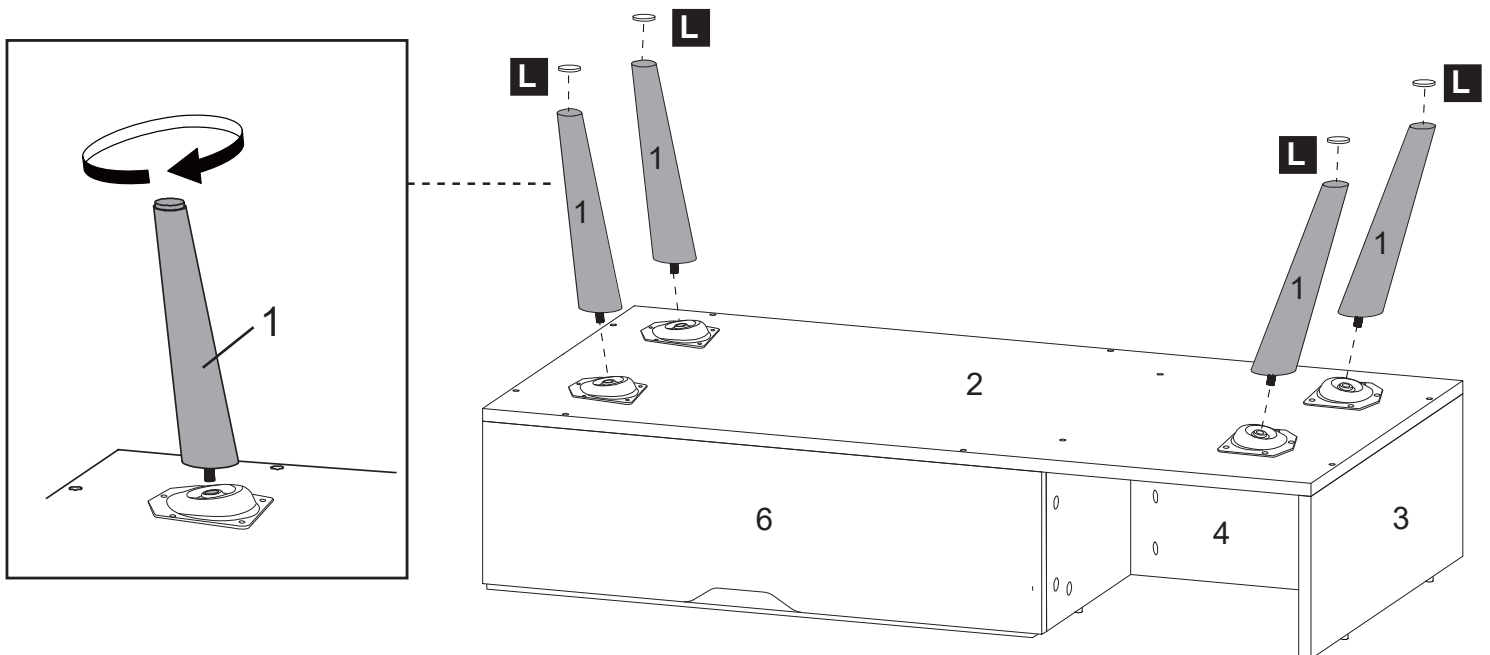
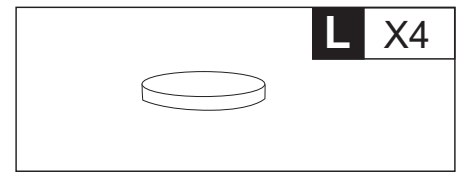
Step 9



Using Bolts **(H)*20**, install Solid Wood Foot Connector **(G)*4** to the four corners of Board **(2)**.

NOTE: The Wooden Foot Connector **(G)*4** faces outward.

Step 10

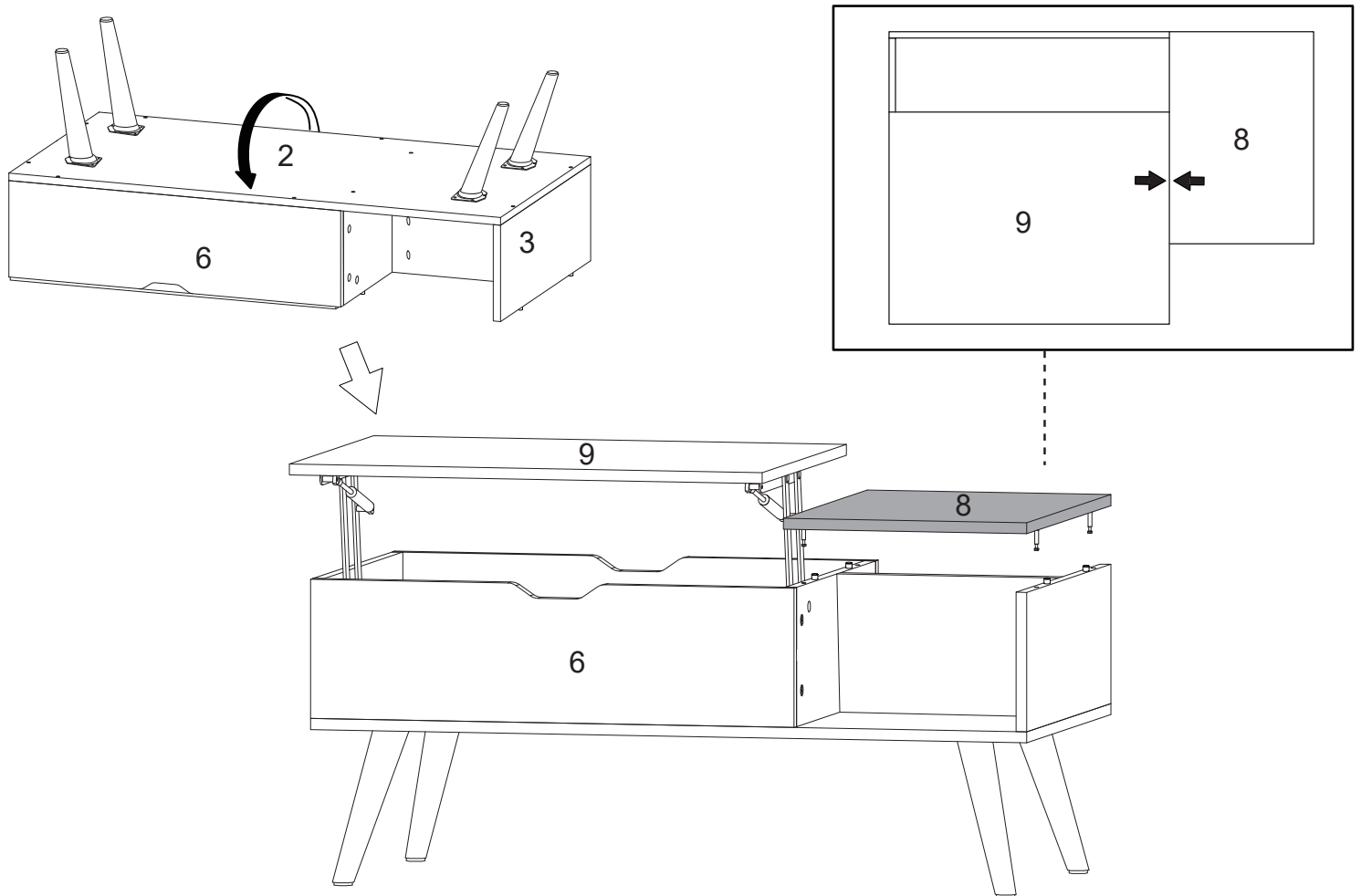


Tighten Wooden Leg (1)*4 completely, and glue Silicone Foot Pad (L)*4 on the bottom of it.

NOTE:

Please wait for 3 minutes until Silicone Foot Pad (L) are completely glued.

Step 11

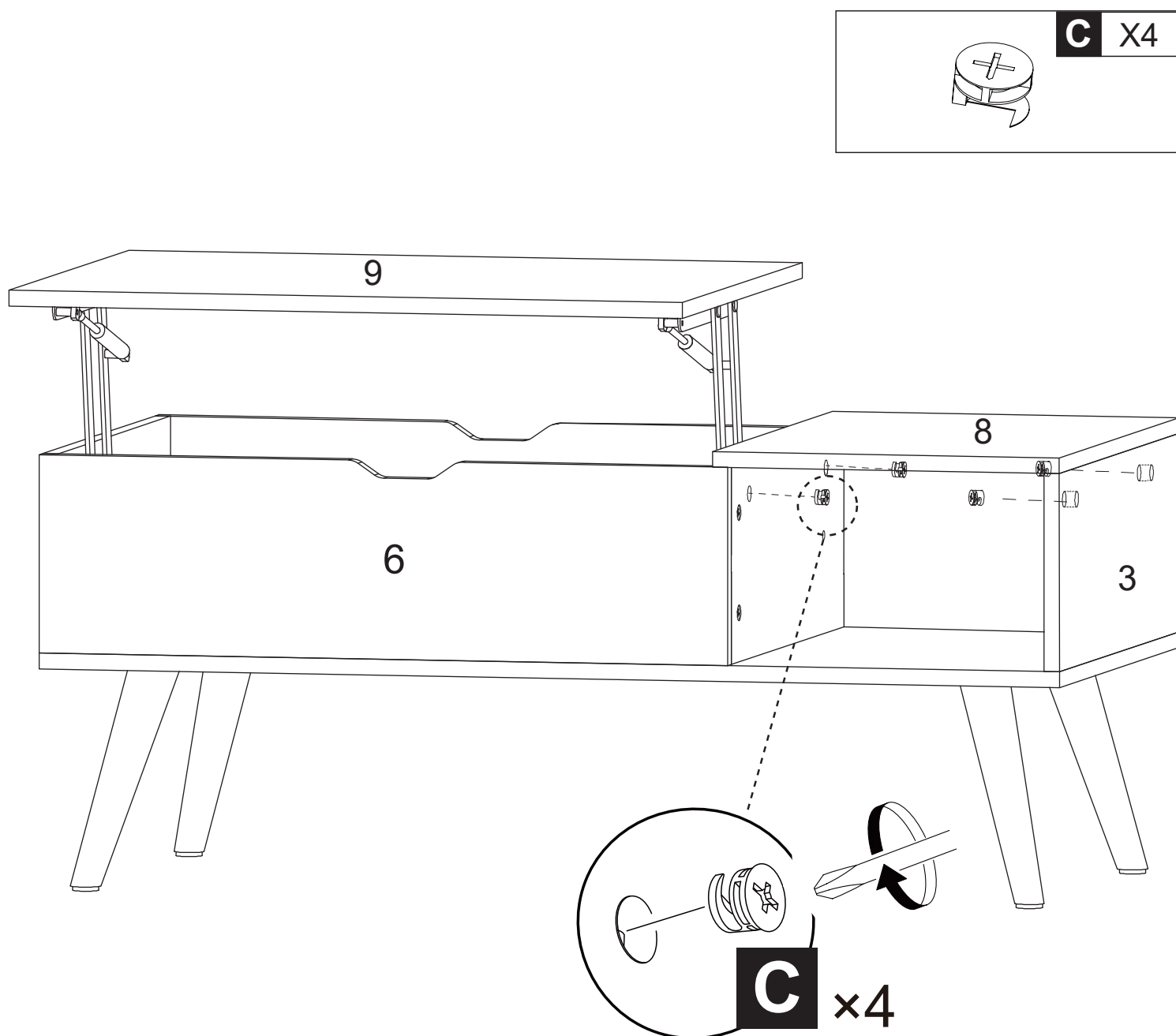


Attach Board **(8)** to Boards **(3&5)**.

NOTE:

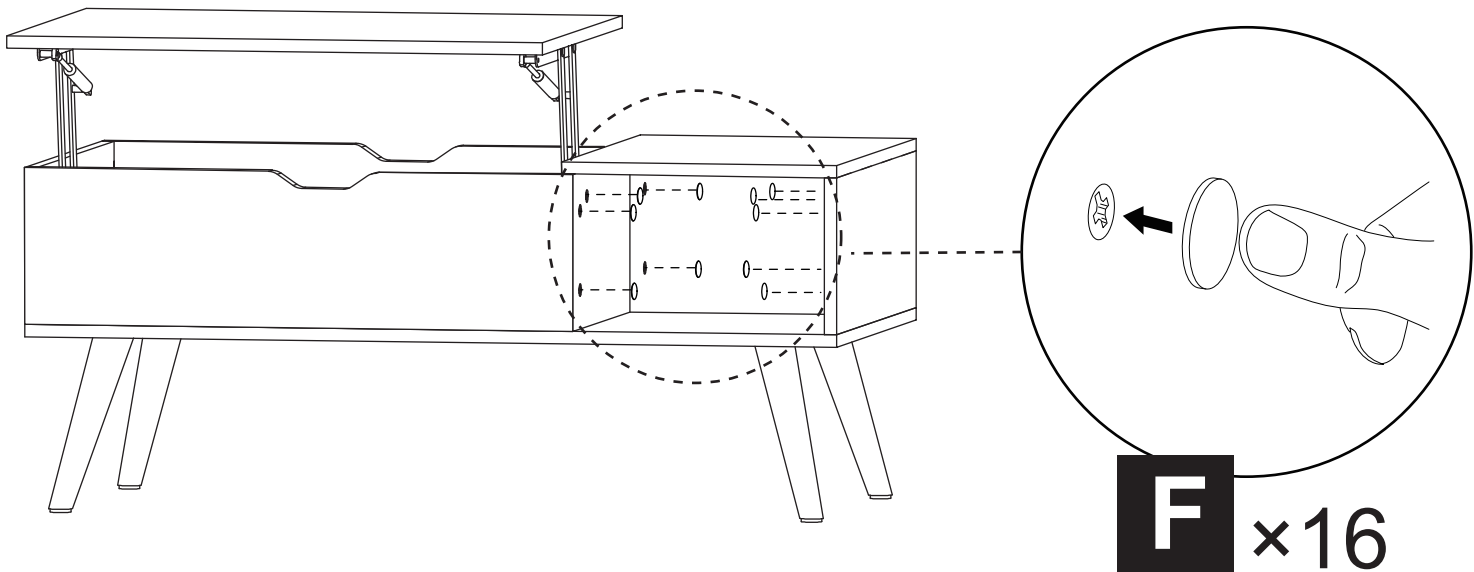
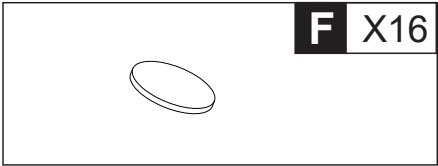
Make sure arrows on Board **(9)** and Board **(8)** point to each other.

Step 12



Tighten Eccentric Wheel **(C)*4** and make sure Board **(8)** is fixed.

Step 13



As shown, use Cover-up Sticker **(F)*16** to cover the exposed part of bolts.

