

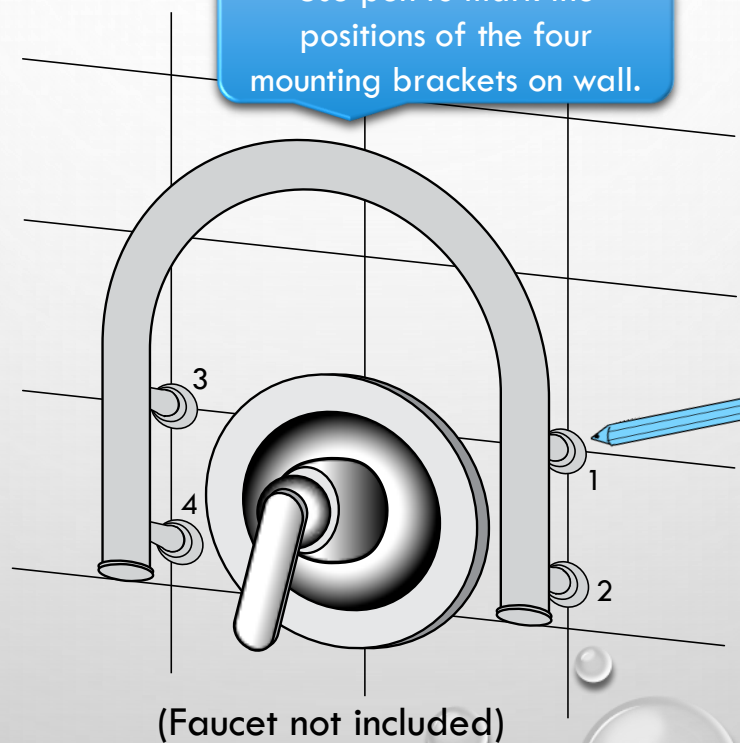
U-Shape Safety Assist Bar Installation Guide

Step 1

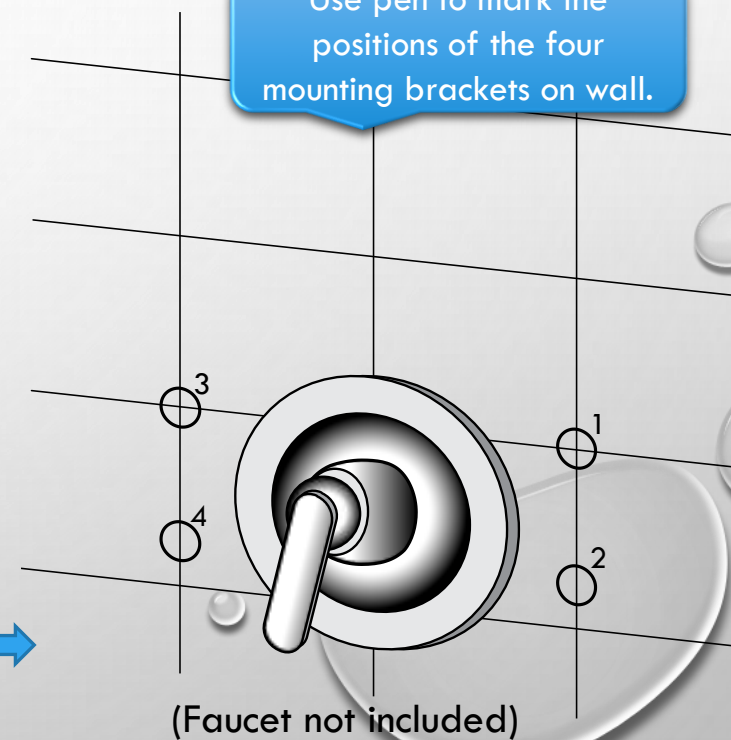
Place U-Shape Bar at
desired location on wall.



Use pen to mark the
positions of the four
mounting brackets on wall.

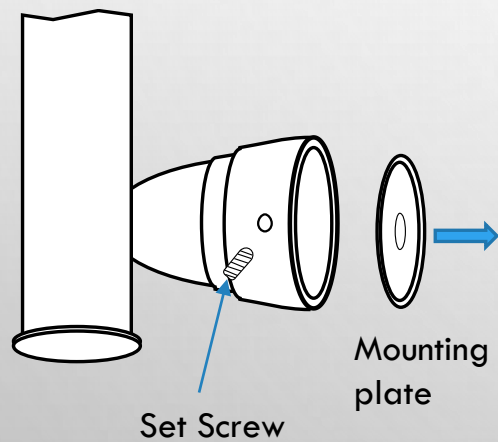


Use pen to mark the
positions of the four
mounting brackets on wall.



Step 2

Unscrew the Set Screw to detach the mounting plate from each Bracket.



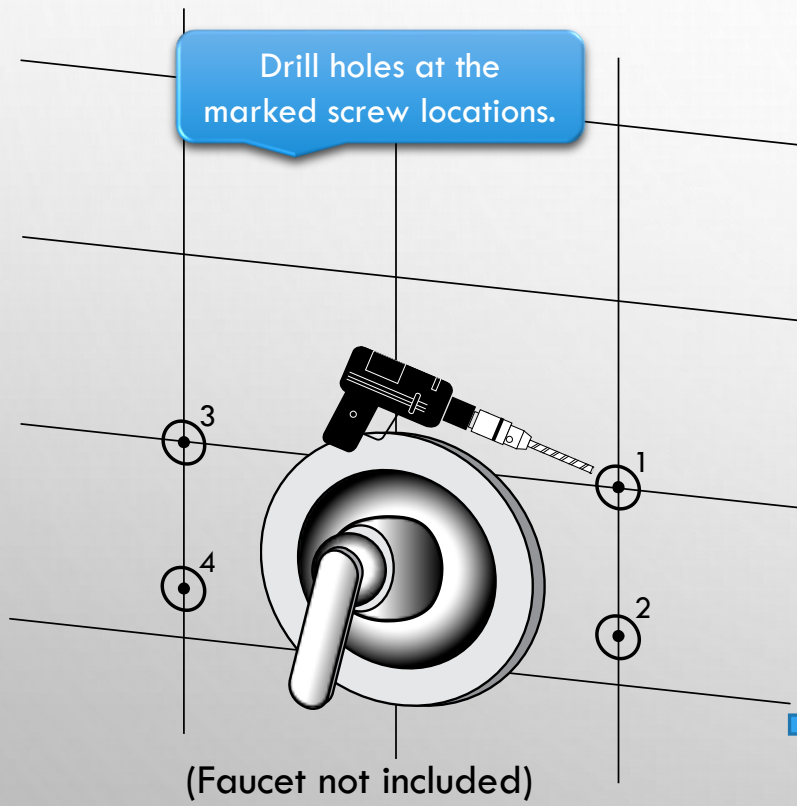
Place the Mounting Plate on each marked position to mark the screw hole locations on wall



Place the Mounting Plate on each marked position to mark the screw hole locations on wall

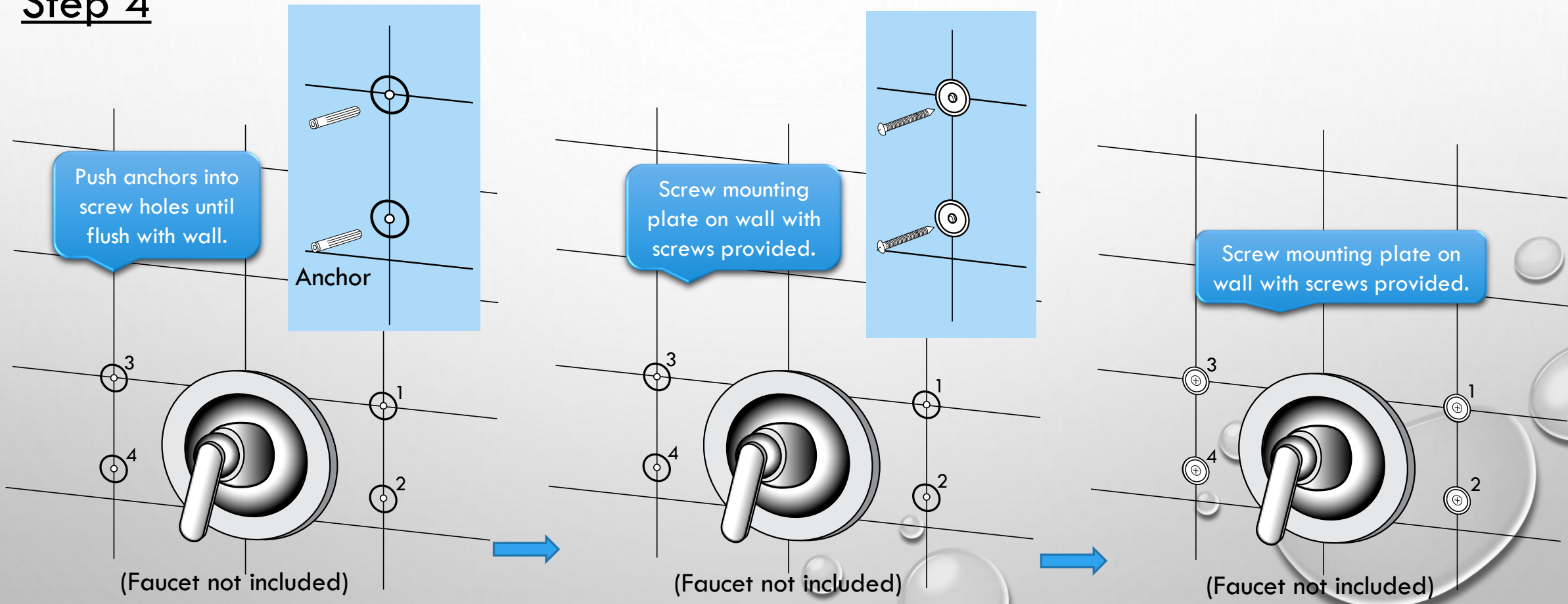


Step 3



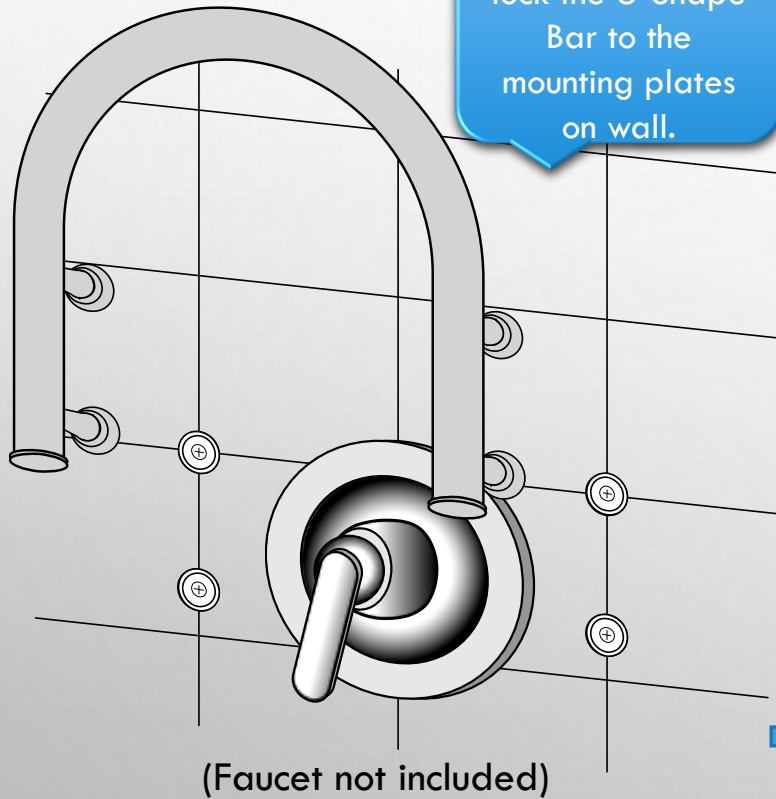
On ceramic tiles, try to locate screw holes on grout line.

Step 4

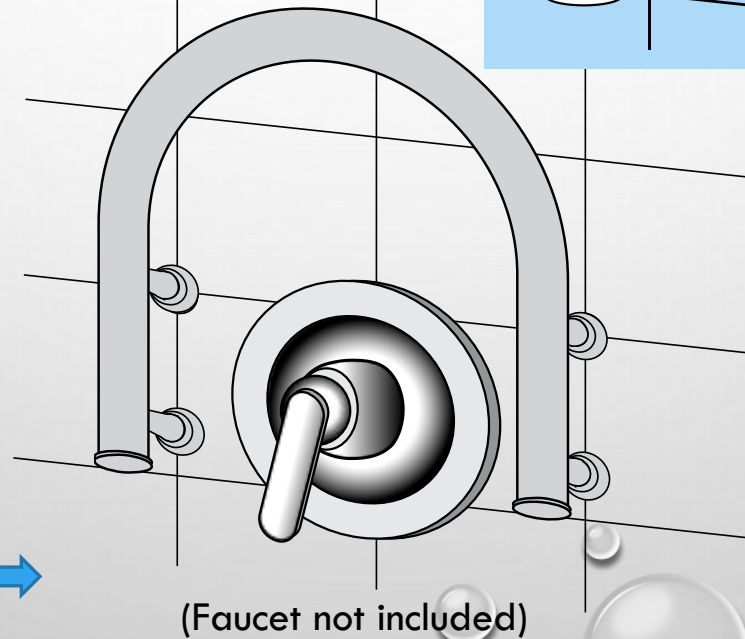
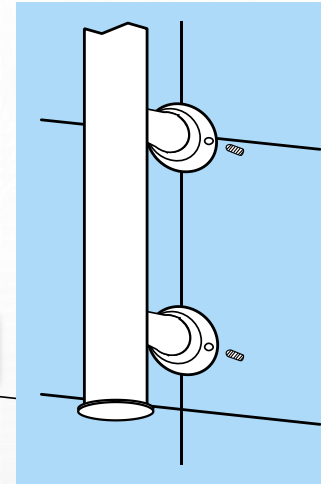


Step 5

At last, mount & lock the U-Shape Bar to the mounting plates on wall.

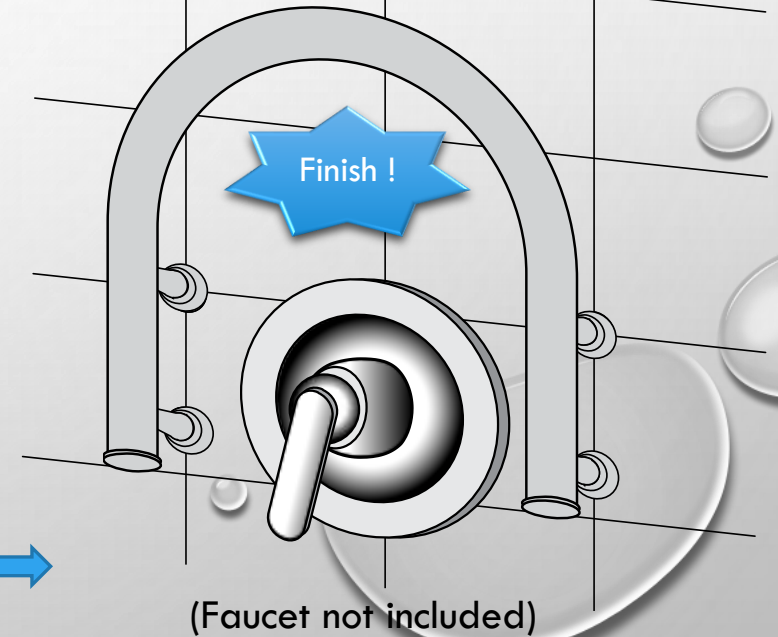


Mount & lock with Set Screws.



To check secure mounting, pull the U-Shape Bar slightly. If not mounted properly, unscrew Set Screws and then, repeat step #5.

Finish !





For more products information,
Please visit our website www.aristabath.com

