



FEATURES

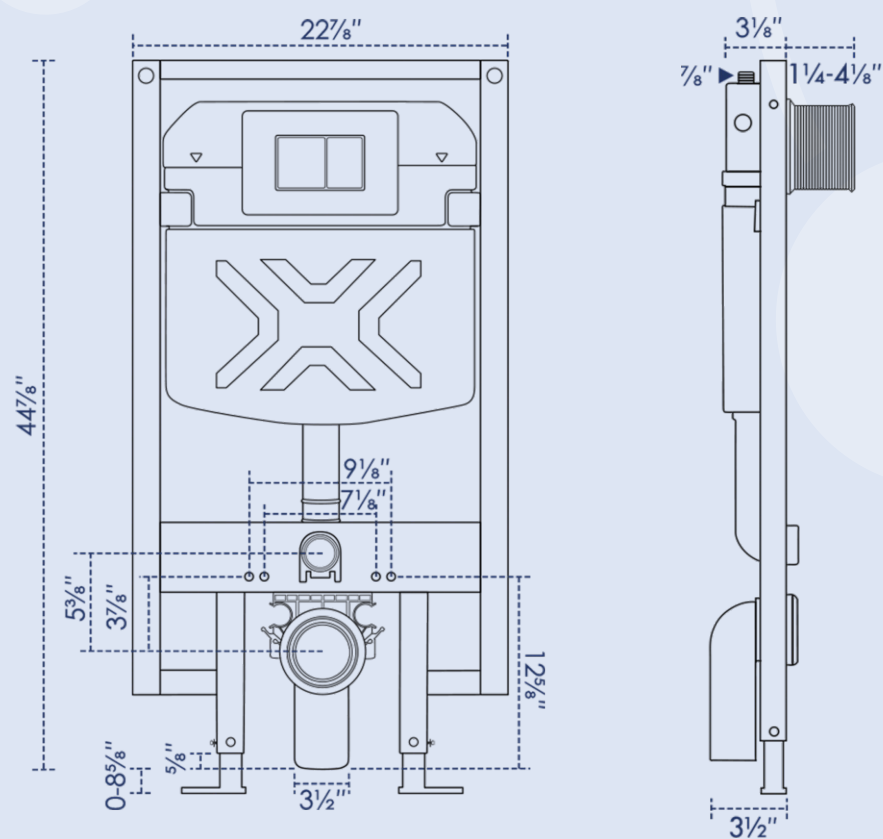
- Strong and durable construction
- Compatible with most wall-hung toilets
- Stainless steel flush plate
- Adjustable frame height (0-220mm)
- Gravity dual flush 0.8/1.6 GPF
- Accessible flushing system for easy maintenance
- Fits 2x4 stud wall

INSTALLATION

- In Wall, Wall Mounted
- Fits both stud and solid walls

SPECIFICATIONS

- Dimensions: 22 $\frac{7}{8}$ "L x 3 $\frac{1}{8}$ "W x 44 $\frac{7}{8}$ "H
- Net Weight: 34.2 lbs



PARTS INCLUDED

- Carrier and Tank
- Pipe Clamp
- Discharge Elbow
- Silicone Grease
- Carrier Fixings Kit
- Rough-In Box
- Flush&Drain Pipes
- Protection Plugs
- Dual-Flush Actuator Plate

COMPATIBLE PARTS

- ERI-WT421
- ERI-WT425