

HANGMAN[®]

hangmanproducts.com

Find us
@hangmanproducts



Share your installation video with
#hangitlikeapro for a chance to be featured!

Have a question? Give us a call.
(818)-610-0487 | Mon-Fri | 7am-6pm PST



Scan QR for
installation video

Check out our No Stud 65" TV Hanger[®]

Don't want to damage your walls but have a
huge TV to hang? We got you.



WARNING:
CHOKING HAZARD — Small parts not for children under
3 years or any individuals who have a tendency to place
inedible objects in their mouths.

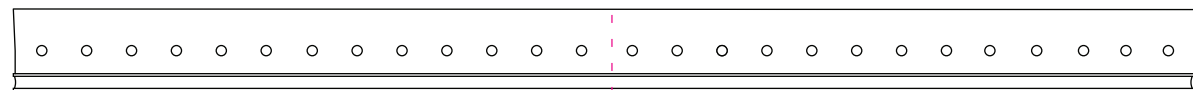
WARNING: Before starting assembly, verify all parts
are included and undamaged. If any parts are missing
or damaged, do not return to your dealer; contact
customer service. Never use damaged parts!



CAUTION: This WD-2060 mount is intended for use
only with TVs weighing up to 100lbs.
Use with TVs heavier than 100lbs. may result in collapse of
the mount and it's accessories causing possible injury.

© Hangman Products 2020

Parts List:



(1) 26" HANGMAN[®]
Wall Bracket



(1) 26"
TV Bracket



(1) Bubble Level



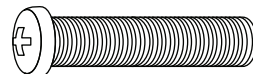
(11) Anchorless
Walldog[™] Screws



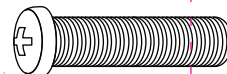
(2) Small Washers
For 4mm Bolts



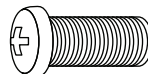
(6) Bolt Washers



(2) **M8** (8mm)
x 45mm Bolts



(2) **M8** (8mm)
x 35mm Bolts



(2) **M8** (8mm)
x 20mm Bolts



(2) **M8** (8mm)
x 16mm Bolts



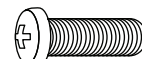
(2) **M5** (5mm)
x 35mm Bolts



(2) **M5** (12mm)
x 12mm Bolts



(2) **M6** (6mm)
x 35mm Bolts



(2) **M6** (6mm)
x 20mm Bolts



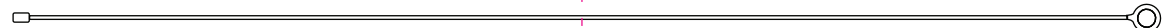
(2) **M6** (6mm)
x 12mm Bolts



(2) **M4** (4mm)
x 35mm Bolts



(2) **M4** (4mm)
x 12mm Bolts



(1) Security cable (1) Wall-Dog[™] screw for security cable

WD-2060

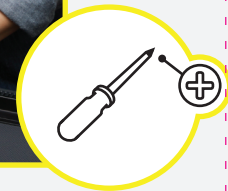
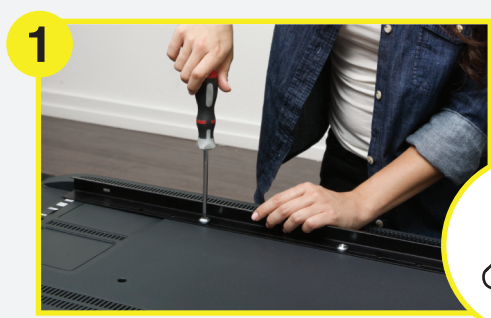
HANGMAN[®]

ALL SURFACE TV HANGER

Installs easily into all surfaces. No anchors needed!

FIXED MOUNT-HOLDS 100lbs

32-80"

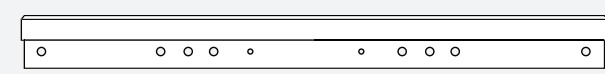


1. Install TV Mounting Bracket

Place the TV face down on a soft surface where it is secure and stable. If your TV is already attached to a base, it must be removed before beginning the installation.

The VESA holes on the back of the TV are either 100mm, 200mm, 300mm, 400mm or 600mm depending on the brand of the TV. This kit includes all sizes.

Attach TV mounting bracket to the top 2 holes using the appropriate bolts. This kit also includes different lengths of each size. Hand tighten to choose appropriate length then use a handheld Phillips screwdriver and tighten until snug. Do not overtighten.



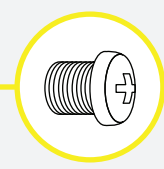
IMPORTANT

Too Short

Too Long

Correct

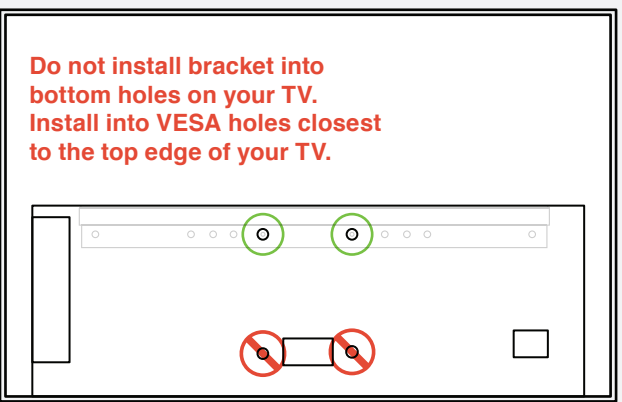
Use washers if bolts are too long



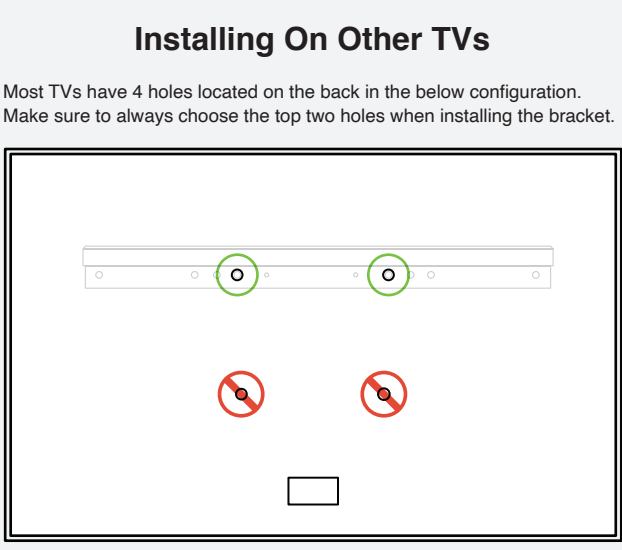
Note: It is very important to select the correct bolt length and diameter that fits your specific TV. This kit includes all sizes.

Installing On Smart TVs

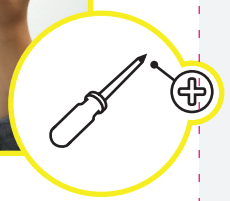
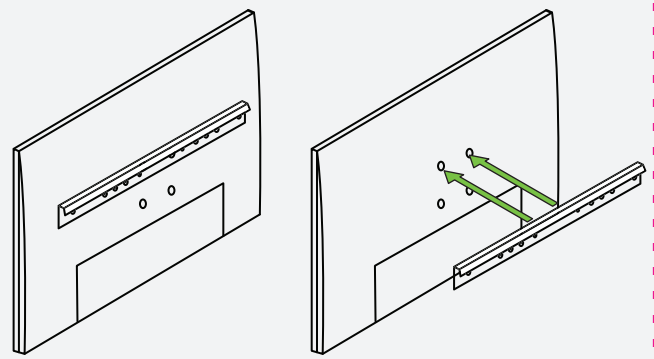
Some smart TVs may have holes located towards the center. Install the TV bracket in holes "closest to top" in relation to any bottom holes.



Back of TV



Back of TV



STEP 2: LEVEL AND INSTALL WALL BRACKET

Using a handheld Phillips-head screwdriver, install the wall bracket using Wall-Dog™ anchorless screws. **DO NOT OVERTIGHTEN**

TIP: Install center screw first, then insert level into wall bracket. Once level, install one screw on each end. Lastly, spread out the remaining screws evenly to complete your installation.

Minimum Wall-Dog™ screw requirement:

- A. Wood Stud & Drywall: 5
- B. Drywall: 11
- C. Brick: 5
- D. Concrete: 5

Minimum Structural Requirements:

- A. Wood stud under drywall**
Minimum stud size and stud spacing (2x4 stud, 16-in spacing), maximum drywall covering thickness (1/2-in)
For direct installations into stud, we suggest using a power screwdriver.
- B. Drywall only (No Stud)**
Minimum thickness of drywall (1/2-in)
When installing into drywall a manual screwdriver must be used to fasten screws to drywall. Do not overtighten the screws.
- C. Brick**
Solid facing brick, approx. mortar thickness (3/8-in)
When installing into brick, *drill a 3/16" x 1-3/8" deep pilot hole first*, all fasteners should be fastened into brick and not the mortar.
- D. Concrete (solid)**
When installing into concrete, *drill a 3/16" x 1-3/8" deep pilot hole first.*

Minimum thickness (4-in.) and the psi of the concrete (if required PSI is greater than 2500psi)

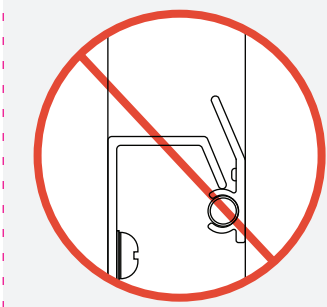
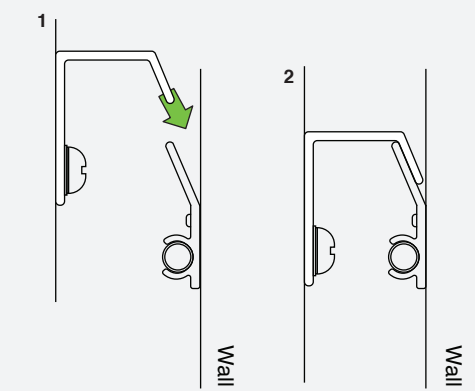
★ It's recommended to feed the security cable through the TV bracket before hanging your TV. Please refer to step one in the included **Security Cable Installation** sheet.



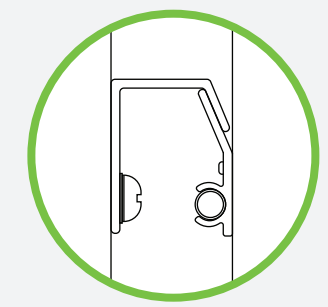
STEP 3: HANG YOUR TV

Hang TV by engaging the TV bracket on top of the wall bracket. Place against wall and slide down. Lower slowly to ensure proper engagement. TV should be centered on the wall mount - no right or left offset.

IMPORTANT: Make sure to fully and properly engage the TV bracket with the wall bracket.



Incorrect



Correct