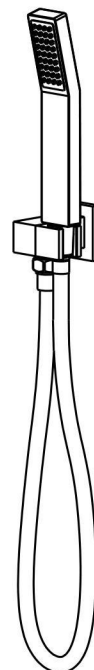
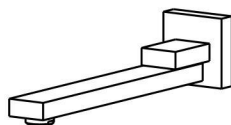
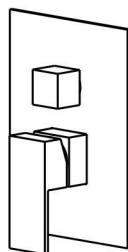
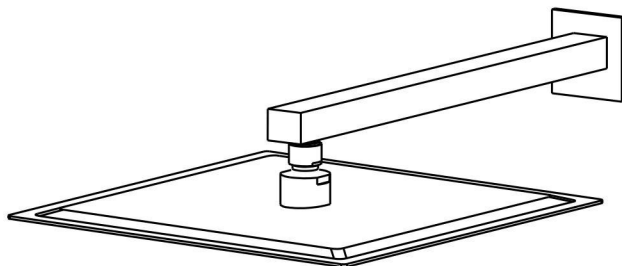


If you have any questions, please feel  
free to contact us.  
Email: [lowesteam@aminalife.com](mailto:lowesteam@aminalife.com)

# User's Manual



# Installation Manual



**IAPMO RESEARCH AND TESTING, INC.**  
5001 East Philadelphia Street, Ontario, California 91761-2816 • USA • 909-472-4100 • 909-472-4244 • [www.iapmo.org](http://www.iapmo.org)

## CERTIFICATE OF LISTING

IAPMO Research and Testing, Inc. is a product certification agency which tests, reports, and samples labels from the listing's source as a condition of a certificate of listing to verify compliance with applicable standards. This listing is a registered and current certification of the product's listing and endorsement as well as the acceptance of the manufacturer's Quality Assurance System. The listing's subject is the condition on which the product is listed. This listing can only be used to be certified as any representation, assurance or guarantee by IAPMO Research and Testing, Inc. of the product acceptance or Authorized Representative.

This certificate is not evidence of current listing. To verify listing status, visit the IAPMO R&T Product Listing Directory at [prod.listing.iapmo.org](http://prod.listing.iapmo.org)

Effective Date: December 2019 - Rev. 2/24/2020 - Valid Until: December 2024

Product: Flexible Water Connectors File No. 5311

Issued To: Fankeli Group Inc.  
Mechanical & Electrical  
Industrial Area  
Yuhuan County,  
Yuhuan 317609, ZHEJIANG  
China

Identification: Products shall be marked with manufacturer's name or trademark, a statement "For use with water in accessible locations only." The products shall also bear the "CPSC" certification mark. Markings shall be by means of either a permanent mark on the product, a label on the product or a tag attached to the product.

Characteristics: Flexible water connectors manufactured in various sizes, lengths and metal end fittings for hot or cold water applications that consist of an inner tube, which may or may not have an outer braided cover. Connectors are to be installed for use in accessible locations only. To be installed in accordance with the manufacturer's instruction, the latest edition of the Uniform Plumbing Code and National Plumbing Code of Canada.

Products listed in this certificate have been tested by an IAPMO R&T recognized laboratory. This recognition has been granted based upon the

Chairman, Product Certification Council

CEO, The IAPMO Group

This listing permit is based upon test data of the sample submitted on the Effective Date and Valid Until Dates shown above. Any change in material, manufacturing process, marking or design without notifying first the signatory of the Product Certification Committee, or any other authorized representative of the listing agency, will void the listing. Production of all reference to this listing for advertising purposes may include only by specific written permission of IAPMO Research and Testing, Inc. Any violation of this certificate notice should be reported to the listing agency. This document shall be kept on file in accordance with the listing agency.

# IAPMO Research and TESTING, INC.

5001 East Philadelphia Street, Ontario, California 91761-2816 USA • 909-472-4100 • 909-472-4244 • [www.iapmo.org](http://www.iapmo.org)



**ANSI**  
APPROVED LISTING AGENCY



**IAPMO**  
RESEARCH



**UL**  
LISTED



## CERTIFICATE OF LISTING

IAPMO Research and Testing, Inc. is a product certification body that tests and samples items from the supplier's stock from the mark of a certificate of listing to verify compliance with applicable standards. This activity is required upon general acceptance of the supplier's listing and equipment used on the assessment of the supplier's Quality Assurance System. This listing is restricted to the conditions and date in the listing and is not a statement of any representation, acceptance or guarantee by IAPMO Research and Testing, Inc. or its product accessories by Authorized Third Parties.

This certificate is not evidence of current listing. To verify listing status, visit the IAPMO R&T Product Listing Directory at [pid.iapmo.org](http://pid.iapmo.org)

Effective Date:	November 2019	Valid After: November 2024
Product:	Flumbing Fitting Fixings	File No. 10c33
Issued To:	Aqua Valley Co., Inc. 11th-15th-100 Block International, Overland Sanitary City, 528000 Fuhuan, China	

**Identification:** Marking supply fittings complying with this Standard shall be marked with the manufacturer's recognized name, trademark, or other mark or, in the case of private labeling, the name, trademark or other mark of the customer for whom the fitting was manufactured. The marking shall be accomplished by use of a permanent mark or by placing a permanent label on the product. Markings on plumbing supply fittings shall be visible after installation.

Single-handle, single-control, and automatic temperature mixing bath and shower valves shall have identifiable temperature control settings in which the settings are indicated by words ("cold," "warm," "hot," etc.), by numbers, or graphically.

Packages shall be marked with the manufacturer's name, trademark, or other mark as well as the model number or, in the case of private



Chairman, Product Certification Committee



CEO, The IAPMO Group

This listing report is based on the test data of the items received on the Effective Date and Valid After Dates shown above, and may change in material manufacturing practices, marking or design without notice from the itemized equipment. IAPMO Research and Testing, Inc. does not warrant the accuracy of the listing. Production of an article for use for other than the purposes may only be made only if the specific test performance of IAPMO Research and Testing, Inc. Any alteration of the certificate must be given by the manufacturer of the product. The certificate shall be reproduced in its entirety.



**IAPMO RESEARCH AND TESTING, INC.**  
5001 East Philadelphia Street, Ontario, California 91761-2816 • USA • 909-472-4100 • 909-472-4244 • [www.iapmo.org](http://www.iapmo.org)

## CERTIFICATE OF LISTING

IAPMO Research and Testing, Inc. is a product certification body which tests and reports sample data from the supplier's stock from the master or a certificate of approval to verify compliance with applicable standards. This listing is a statement of the independent, objective assessment of the manufacturer's quality and conformance as well as the assessment of the supplier's Quality Assurance System. This listing is subject to the conditions and terms in the IAPMO Research and Testing, Inc. policy and is to be considered as only a representation; accuracy is guaranteed by IAPMO Research and Testing, Inc. or the product manufacturer by Authorized Listing Authorities.

This certificate is not evidence of current listing. To verify listing status, visit the IAPMO R&T Product Listing Directory at [pd.iapmo.org](http://pd.iapmo.org)

Effective Date: March 2019

Void After: March 2024

Product: Plumbing Fixture Fittings - Components

File No. HC-9703

Issued To: Ningbo Mubai Cartridge Technology Co., Ltd.  
Xiaohu Xue, China  
Fuzhou, HEBEIO 315158  
China

Identification: Each fitting component shall bear permanent legible markings to identify the manufacturer. This marking shall be the trade name, trademark, or other mark known to identify the manufacturer. The product shall also bear all other markings required by the standard. The marking shall be applied as so to be visible after installation. The product or packaging shall also bear the "CPC" certification mark along with the term "COMPONENT" above.

Characteristic: Plumbing fixture fitting components to be installed in accordance with the manufacturer's instructions and the requirements of the latest edition of the Uniform Plumbing Code.

Products listed on this certificate have been tested by an IAPMO R&T recognized laboratory. This recognition has been granted based upon the laboratory's compliance to the applicable requirements of ISO/IEC 17025.

Products are in compliance with the following code(s):  
Uniform Plumbing Code (UPC®)

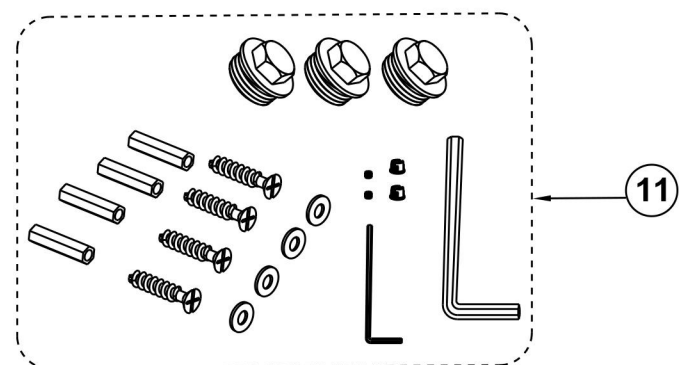
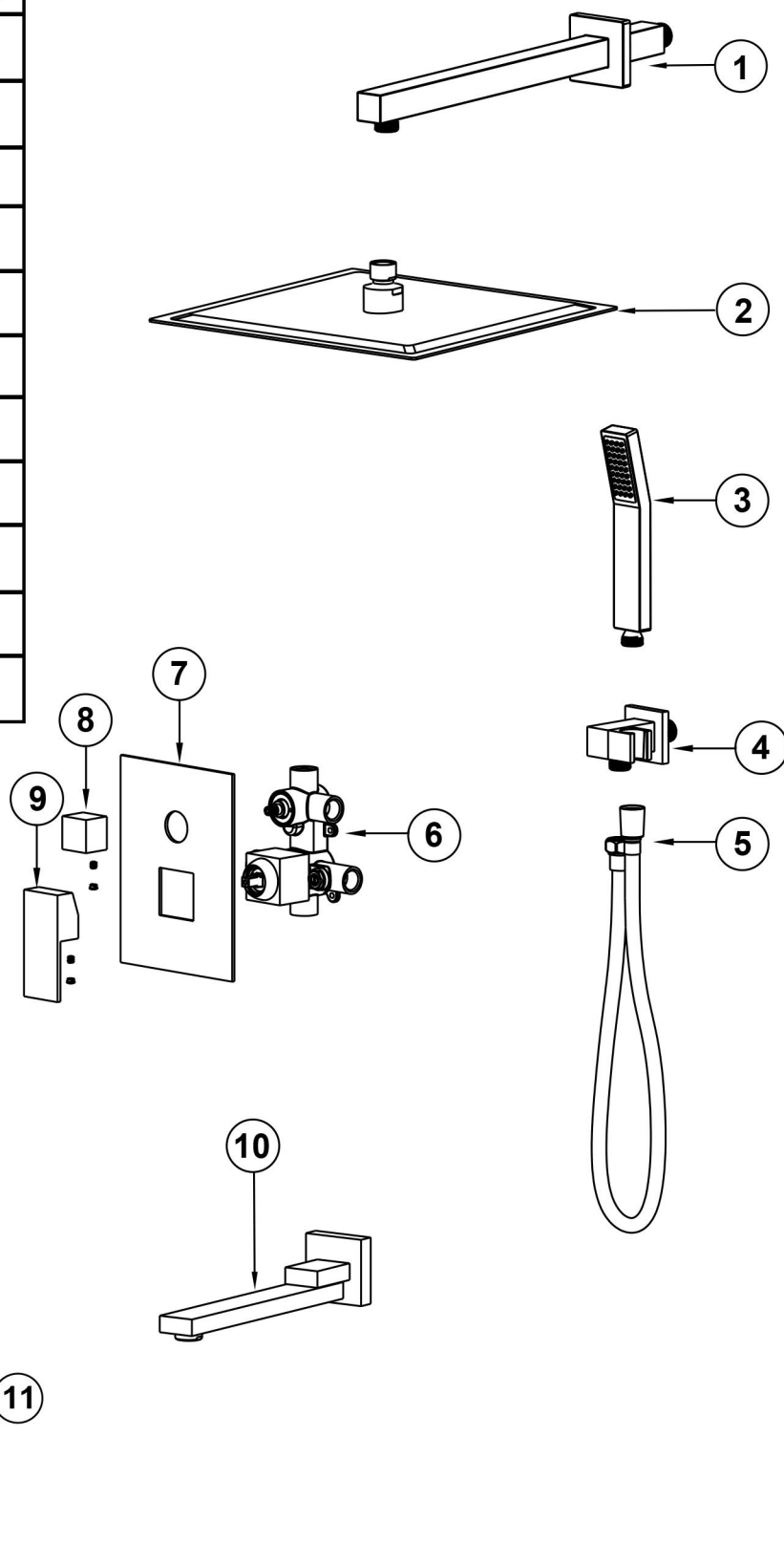
*Tom Collins*  
Chairman, Product Certification Council

*Ron Cherry*  
CEO, The IAPMO Group

This listing is based upon the test data of the sample obtained on the Effective Date and Valid After Dates shown above. Any change in material, manufacturing process, marking or design without having first obtained the approval of the IAPMO Research and Testing, Inc. may constitute a violation of the listing. Any alteration of the certificate to be used for advertising purposes may be made only with the written permission of IAPMO Research and Testing, Inc. Any alteration of this certificate could be regarded as falsification of the listing. This document shall be reproduced in its entirety.

# BEFORE INSTALLATION

NO.	Item	Qty
1	Upper outlet pipe	1
2	Top shower head	1
3	Hand-held shower head	1
4	Hand shower bracket	1
5	Shower hose	1
6	Main body	1
7	Panel	1
8	Water diversion handwheel	1
9	Handle	1
10	Lower outlet pipe	1
11	Accessory bag	1



## Check accessories

### Standard List of Accessories:

When you open the product packaging, please check whether the objects in it are consistent with the main body and accessories you purchased. If there is any inconsistency, please contact our company or our distributor.

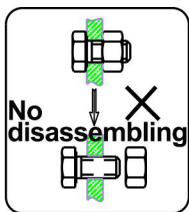
Note: 1. Accessories are subject to change without prior notice if the change does not affect usage;

2. The appearance of the product is subject to the physical objects you receive, and the schematic diagram is only for reference.

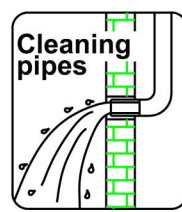


# INSTALLATION STEPS

This product has been inspected and debugged by the factory to the best condition. Please do not disassemble and assemble it yourself.

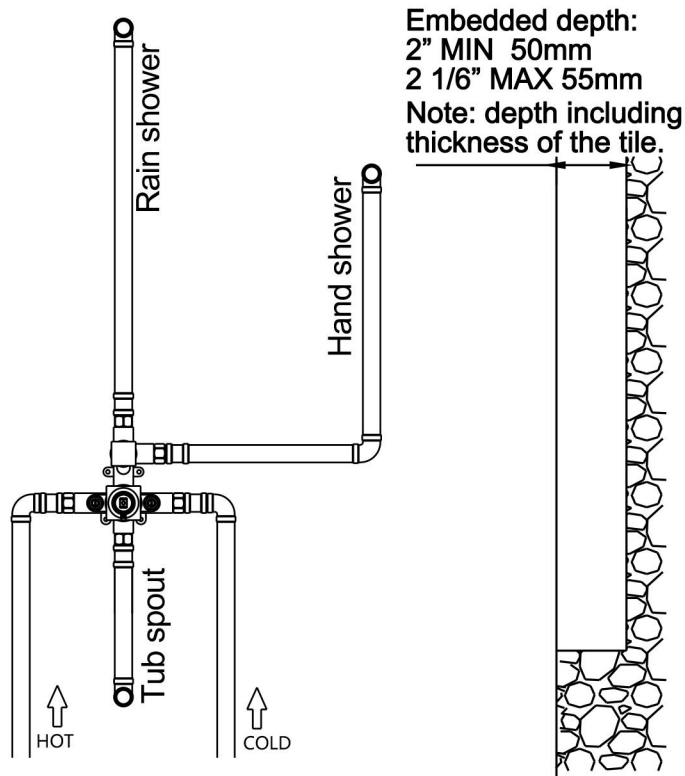


Before installing the product, please be sure to remove sundries and sludge from the water pipe to prevent sundries from blocking the product.

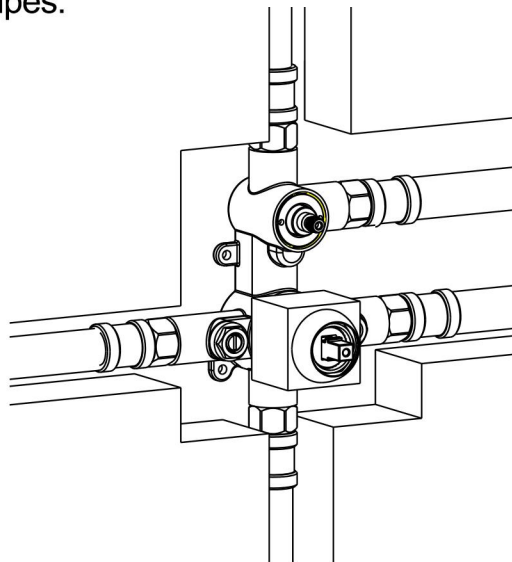


1. Dig pipe grooves for pre-burying pipes.

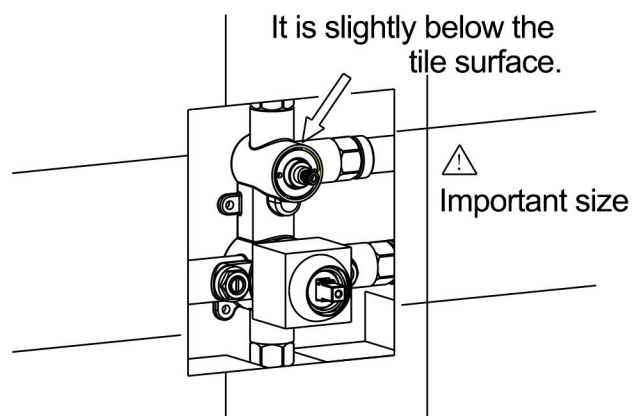
Unit:inch



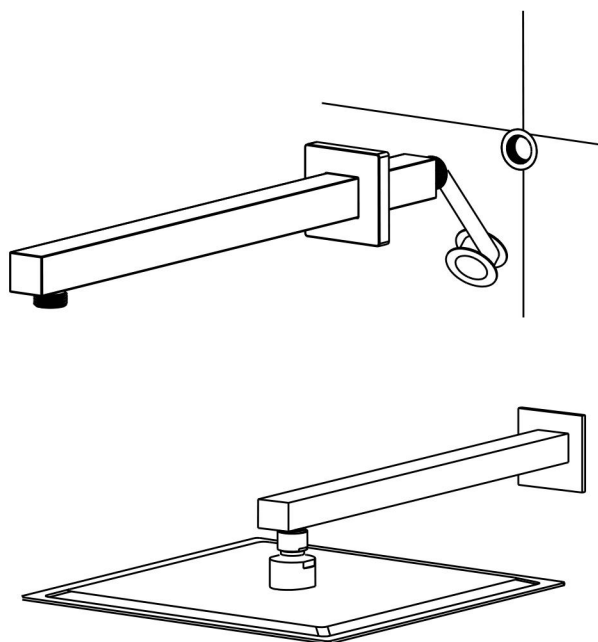
2. Install the main body and water inlet pipes.



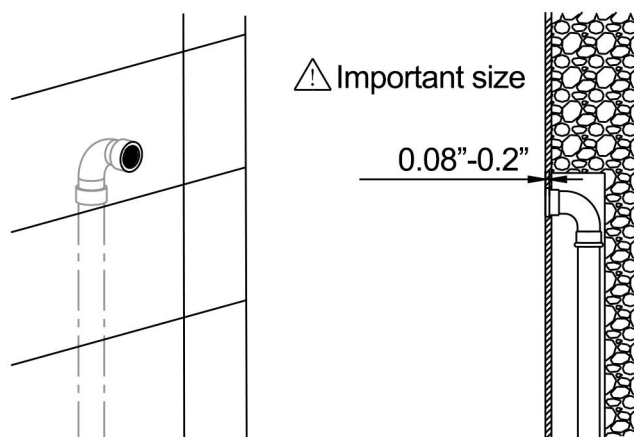
3. Attach the tiles (refer to Figure 4 for important dimensions).



5. Install the upper outlet pipe and the top shower head.  
(wrap the PTFE tape on the thread)

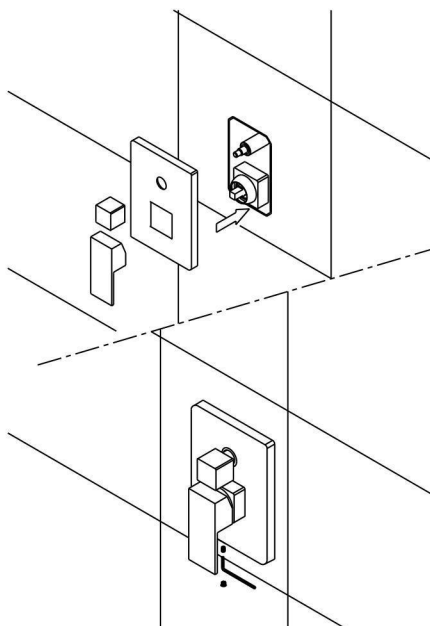


4. The water outlet of the hand shower is slightly lower than the tile surface.

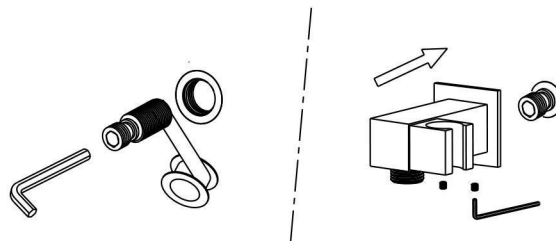


# INSTALLATION STEPS

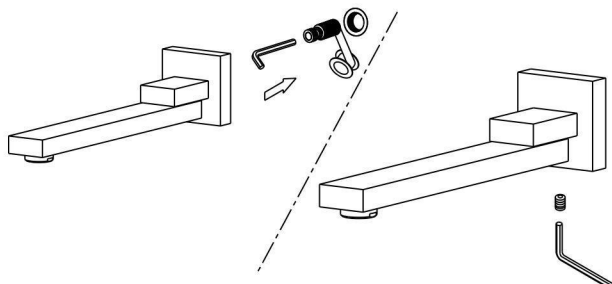
6. Install the panel and handle.



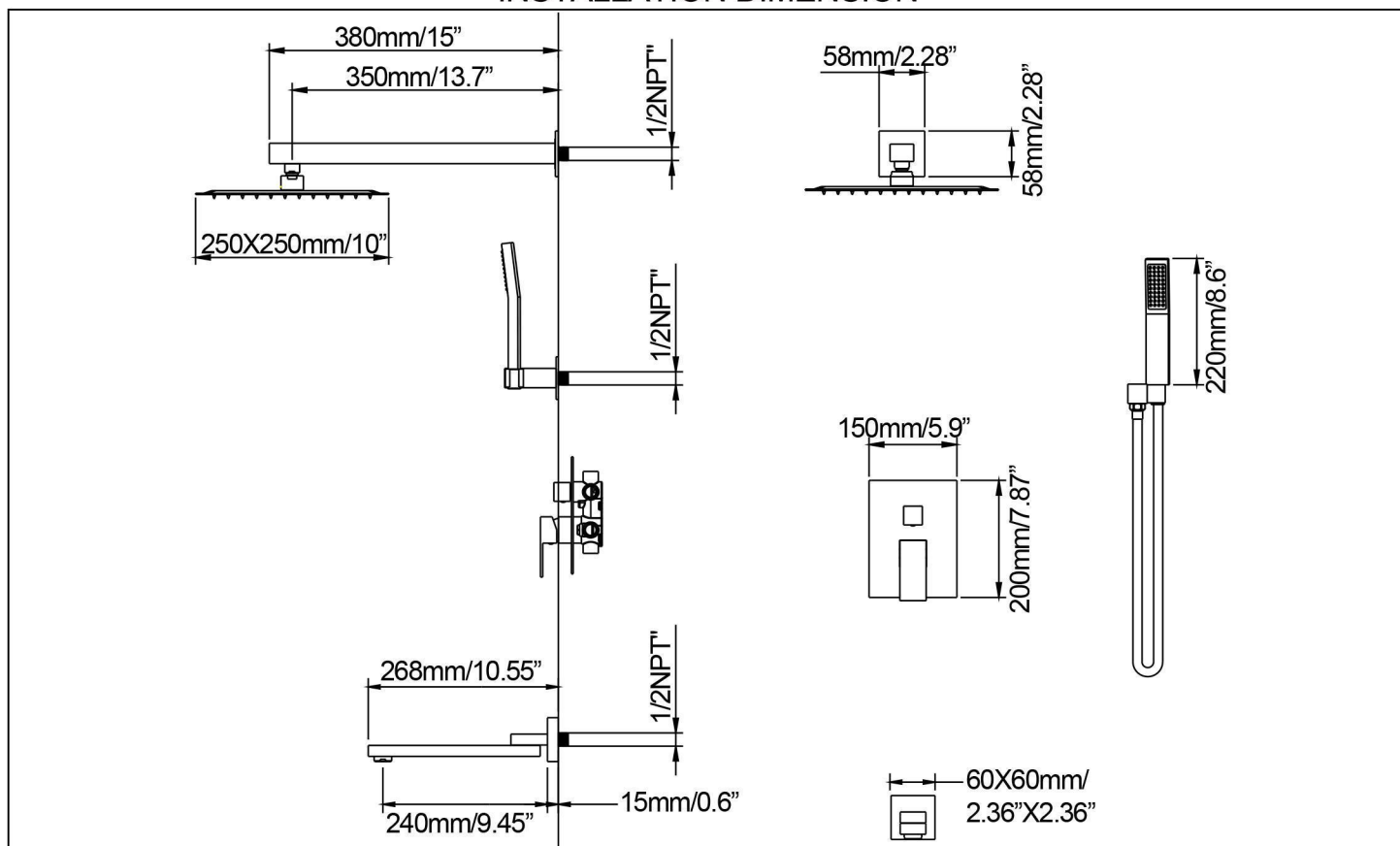
7. Install the hand shower seat.



8. Install the lower water pipe.



## INSTALLATION DIMENSION



## CLEANING CARE

In order to keep the appearance of product clean, bright and good performance, please take care of the product as follows;

1. Rinse with water only and dry with soft cotton cloth;
2. Use mild liquid and colorless glass cleaner to remove surface dirt and scale film, or use polish without abrasive effect;
3. Do not use abrasive detergent, polish, emery cloth, paper towel or scraper, etc;
4. Do not use acid cleaner, or cleaner and soap with insoluble gran etc;
5. In the process of use, mud may accumulate in the bubbler and make the water flow show, The bubbler can be unscrewed, rinsed with water, and then installed back in place.



