

WHERE FLIES CHECK IN, BUT THEY CAN'T CHECK OUT



The most effective way to break the reproduction cycle of flies!

For outdoor use only,

Please do not buy ineffective Chinese Copies.

FOR THE BEST RESULTS

Strategically place your trap, equipped with Flies Inn fly attractant bait, away from competing odors.

HANG **30 FEET** AWAY FROM INHABITAT AREAS TO DRAW FLIES AWAY

Just Set Up and Hang!



1

Detach the bait plate by gently pushing the bottom hoop inward.



2

Pour one of the attractant bait pouches in the bait plate, fill it up with warm water, and stir.



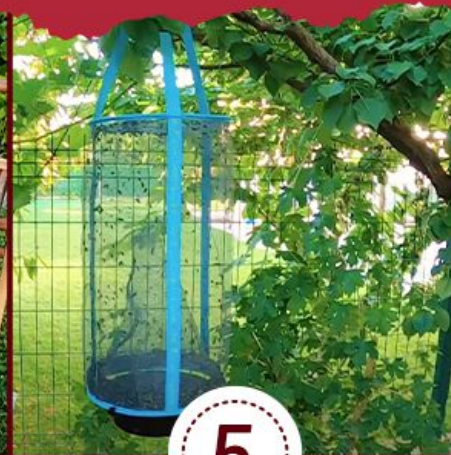
3

Ensure that the cone-shaped net inside the trap is upright, allowing flies to enter through the cone.



4

Install the bait plate onto the bottom hoop by carefully pressing the hoop inward.



5

Hang the LITE Fly Cage according to trapping tips. Please watch the video for guidance.

UNLOADING AND RELOADING



1

Detach the bait plate from under the EZ Fly Cage by gently stretching the legs.



2

Invert the cone and gently shake out the dead flies into a trash can. (Trapped flies cannot escape during the unloading process.)



3

Ensure the cone-shaped net inside the trap is positioned upright, allowing flies to enter through the cone.



4

Position the reloaded bait mix in plate between three legs and gently push it up until it rests on the notch.



5

Hang the EZ Fly Cage according to trapping tips. Please watch the video for guidance.

TRAPPING TIPS



FOR OUTDOOR USE ONLY

Hang 20 feet away from the area that you want to protect to draw the flies away.



USE WARM WATER AND SHAKE

This will shorten the bait activation.



HANG IT OUT OF THE WIND

If flies get blown away by the wind, they can't enter the fly trap!



WAIT 24 HOURS

It may take up to a day for activation, depending on the weather conditions.



ADD MORE WATER?

Dry traps are ineffective! Maintain the water level up to the splash barrier.




RIGHT TIME, RIGHT PLACE

Place fly traps in the sun during warm weather and in the shade on hot days to match seasonal fly activity.

WHERE FLIES CHECK IN, BUT THEY DON'T CHECK OUT!

Harmless to bees or other helpful pollinators



A man and a child are in a garden. A fly trap is hanging from a string. A small inset image shows a box of 'FLIES INN' fly traps.

SPECIAL FORMULA

Flies Inn Fly Cages have a hollow body made out of durable fiberglass. When female flies are caught, they create an enormous amount of sexual pheromones that attract the entire colony into the fly cage. Some competitors attempt to match our effectiveness by using artificial pheromones, but they fall short.

A fly trap is shown against a dark background. The trap is a cylindrical cage with a funnel at the bottom.

PERFECT DESIGN

The trap's color lures flies to the entrance, and the natural light within guides them to their capture.

A fly trap is hanging in a garden. The trap is a cylindrical cage with a funnel at the bottom.

MOST EFFICIENT

Buzzing colonies in Flies Inn Cages supercharge attraction—exponential effectiveness!

MINIMAL ODOOR

Flies Inn Traps employ multiple attraction methods without relying on overpowering odors. They utilize a fish-free, low-odor lure and feature a unique funnel design that effectively separates dead flies from the bait, resulting in minimal decay smell.

HANG **30 FEET** AWAY FROM INHABITAT AREAS TO DRAW FLIES AWAY



TRASH CAN



BACKYARD



PATIO



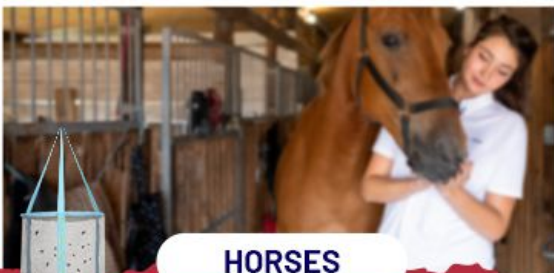
CHICKENS



DECK



GARAGE



HORSES



PORCH

Strategically place your trap, equipped with Flies Inn fly attractant bait, away from competing odors.



For optimal effectiveness, position the trap near ground level when animals are present.