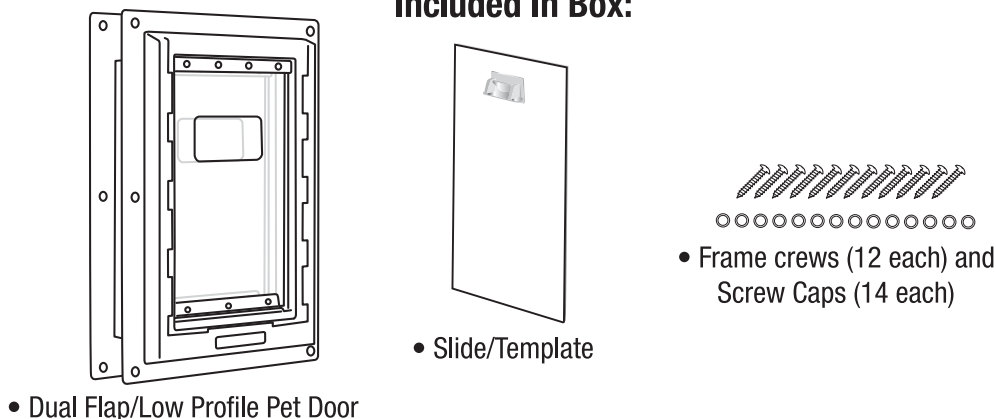


Dual Flap/Low Profile Pet Door Installation

Included In Box:



Tools Required for Installation:



Safety Goggles • Tape Measure • Pencil • Level • Hammer and Awl (or Nail) • Sabre Saw • Phillips Screwdriver • Drill and 3/8" Drill Bit

STEP 1 - Measure your pet from floor to shoulder and add 2". Next, transfer this measurement to door and use a level to mark a straight edge at this measurement. Center the slide/template in middle of door and align top edge of template cutout to the straight edge mark. With plastic slide/template held in place, use a pencil to draw around the outside edge of slide/template onto door. Use a nail or awl to mark four inside edge corner cutout starter holes for drilling.

IMPORTANT!!! We Recommend The Bottom Edge Of The Slide/Template Cutout Be At Least 4" From The Bottom Edge Of Your Door.

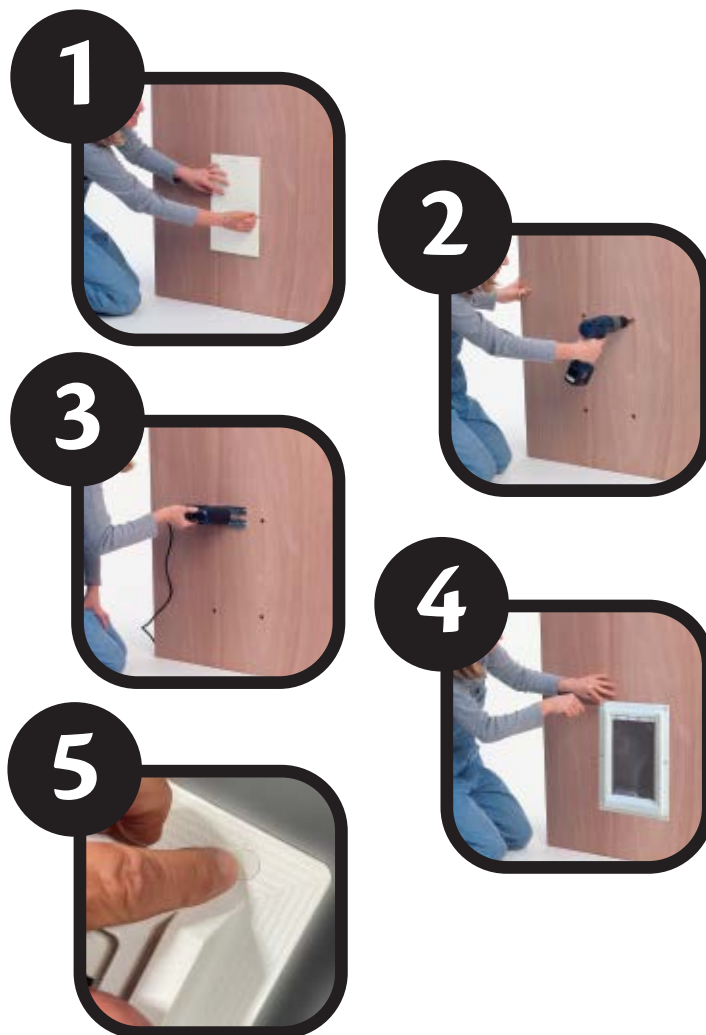
STEP 2 - Remove the slide/template and drill four 3/8" diameter individual corner cutout starter holes.

STEP 3 - Using a sabre saw, begin with one of the outside edge cutout starter holes and carefully cut along the pencil line all the way around. Remove the cutout section when completed.

STEP 4 - Insert outer frame into opening from exterior side making certain frame is flush with door surface, then install frame screws and tighten until snug. Next, place inner frame into opening from inside of door, install frame screws and tighten until snug.

IMPORTANT!!! Do not over-tighten.

STEP 5 - Finish the installation by pressing the frame screw caps (supplied) over the holes on the inside and outside frames.



As with any home improvement project, if you do not have the tools or skills to properly install your pet door, we suggest using a professional handyperson or licensed contractor.