



# RealWood™ – RealSoffit™

## Installation Procedures

**Notice:** To ensure long term product performance, stained or clear coated RealSoffit™ profiles are not recommended for exterior siding applications; this type of application will not be covered by our warranty program.

### Preparation

RealSoffit™ is manufactured from hand selected, high grade of Western SPF, and is coated within a controlled manufacturing environment. Not unlike other exterior building products, RealSoffit™ is a natural material and responds to the environment where it will be installed. Wood products can swell or shrink in order to reach the equilibrium moisture content of the surrounding air. Ensuring that RealSoffit™ has reached the equilibrium content of the surrounding area prior to installation will help to minimize movement in the future.

### Storage

On the jobsite keep RealSoffit™ dry, stack the soffit 6" inches off the ground and under cover. It may be necessary to "stack and sticker" RealSoffit™ in order for the product to reach equilibrium moisture content; this process may take up to 7 days. Equilibrium moisture content will change based on seasonality and humidity conditions in your market.

### Installation

When installing Real Soffit™, it is recommended that a reveal is left between the tongue and groove in order to compensate for potential expansion and contraction of the product. During installation allow a minimum reveal of 1/16" (1.6mm) during high humidity conditions (16% or higher) or a minimum of 1/8" (3.2mm) during lower humidity periods (less than 16%). (See illustration below)

Allow a 1/4" (6.35mm) gap whenever the soffit can be restricted for expansion in width and a 1/8" (1.6mm) gap at the end of any lineal run (See illustration below).

8007 Aitken Road  
Chilliwack, British Columbia  
Canada, V2R 4H5

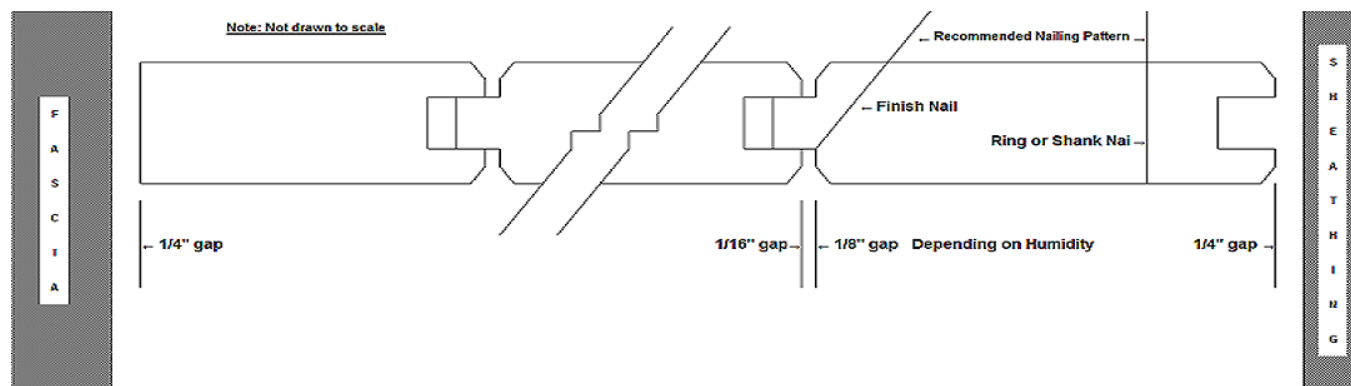
**Telephone** 800 663 9844

**Facsimile** 604 792 3976

[www.woodtone.com](http://www.woodtone.com)

**WOODTONE™**

always there, naturally



## Coating

Apply a finish coat if required, applying an equal number of coats to all surfaces to equalize the loss or gain of moisture. Alkyd and latex coatings are designed to breath, resulting in the transfer of moisture in or out of natural substrates. Coating will not seal moisture in or out completely, follow paint manufactures guidelines and instructions for all coating applications.

## Nailing Instructions

RealSoffit™ can be applied with either hand or power driven nails or screws. It is recommended that the fastener be driven into the exposed face on the tongue side and started where the tongue and face intersect (See illustration above). The fastener should be countersunk so it does not restrict the adjoining piece. Although often adequate, an additional fastener applied through the face especially in regions of greater humidity fluctuations will further reduce the potential for product movement.

Nails should penetrate the framing member at least 1-1/2" (38.1mm), while screws at least 1" (25.4mm). Fasteners should be spaced approximately 16" on centre. Hot dipped galvanized or aluminum nails are recommended (2-1/4" 7d for smooth nails and 2" 6d for ring or shank nails. 15 gauge brad nails are also approved.

Natural tendencies of wood and other building products to contract, shrink and swell cannot be stopped, you must plan for it. Design and build with dimensional changes in mind.

If you require additional information contact Woodtone directly at 1-800-663-9844.

8007 Aitken Road  
Chilliwack, British Columbia  
Canada, V2R 4H5

**Telephone** 800 663 9844

**Facsimile** 604 792 3976

[www.woodtone.com](http://www.woodtone.com)

