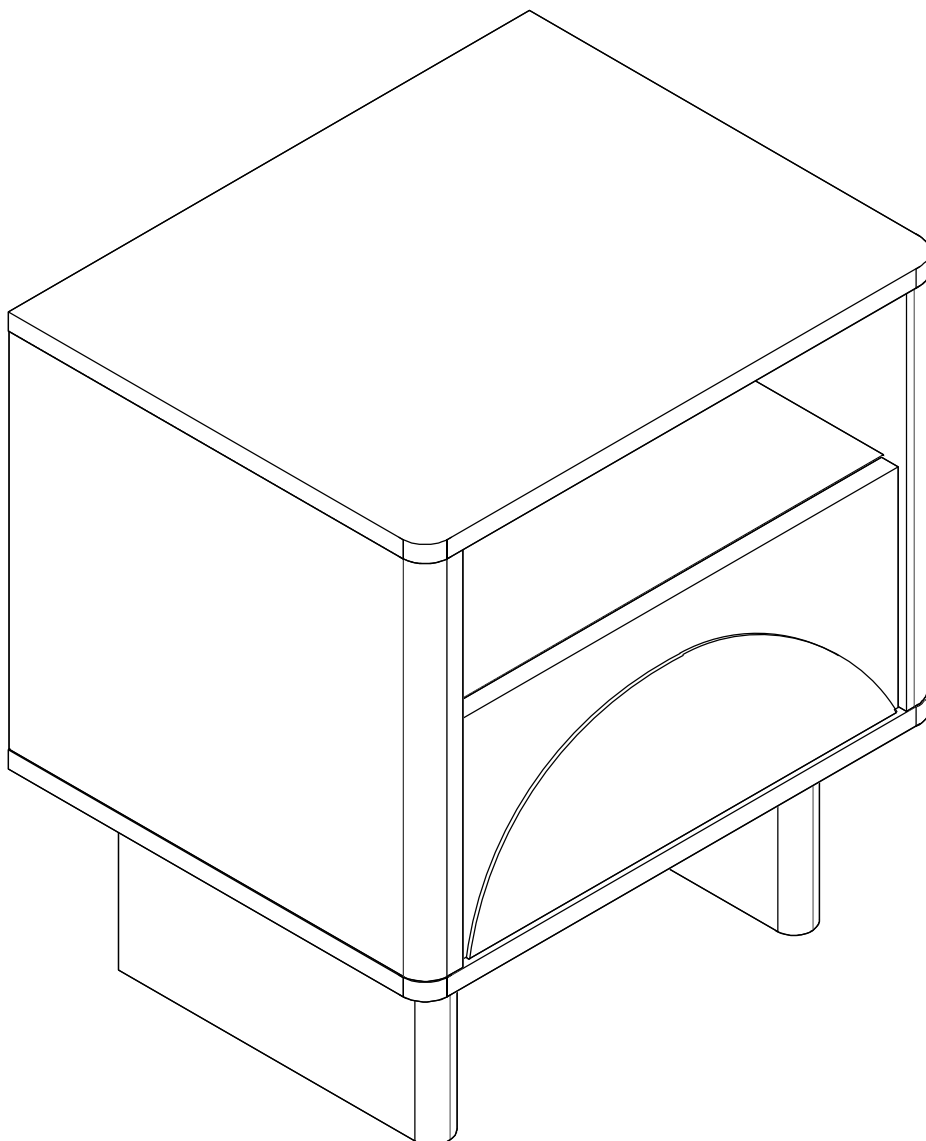


NS005



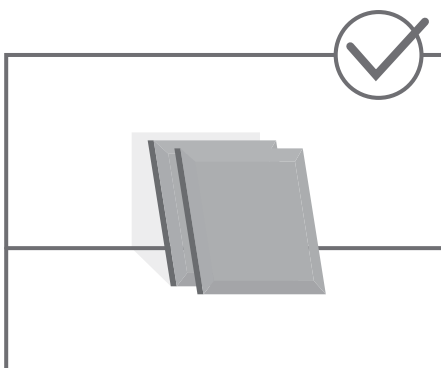
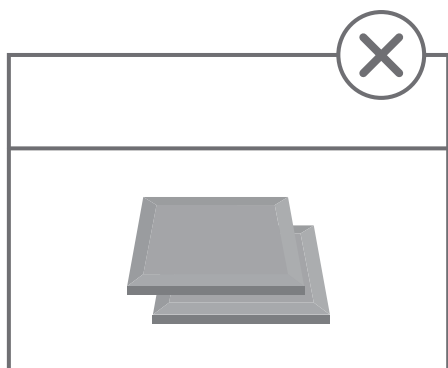
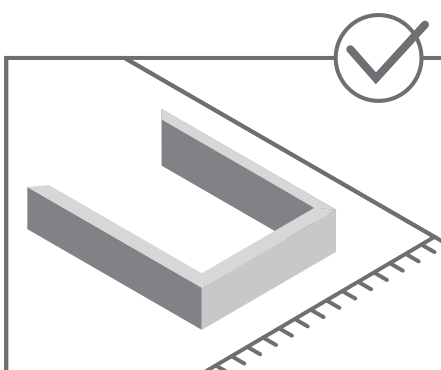
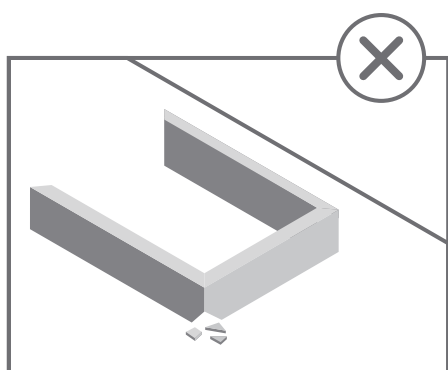


STOP!

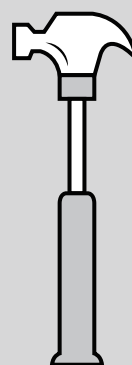
Before beginning the assembly process,
ensure all boxes and parts have been delivered.

FOR BEST RESULTS:

- Do not throw away packaging materials until assembly is complete.
- Assemble item on a soft surface, such as cardboard or carpet, to protect finish.
- Proper assembly requires two people.



TOOLS REQUIRED



View our assembly video online:
WWW.MANHATTANCOMFORT.COM



Stuck? Question? We are here to help.
tel: 908-888-0818
e-mail: help@manhattancomfort.com

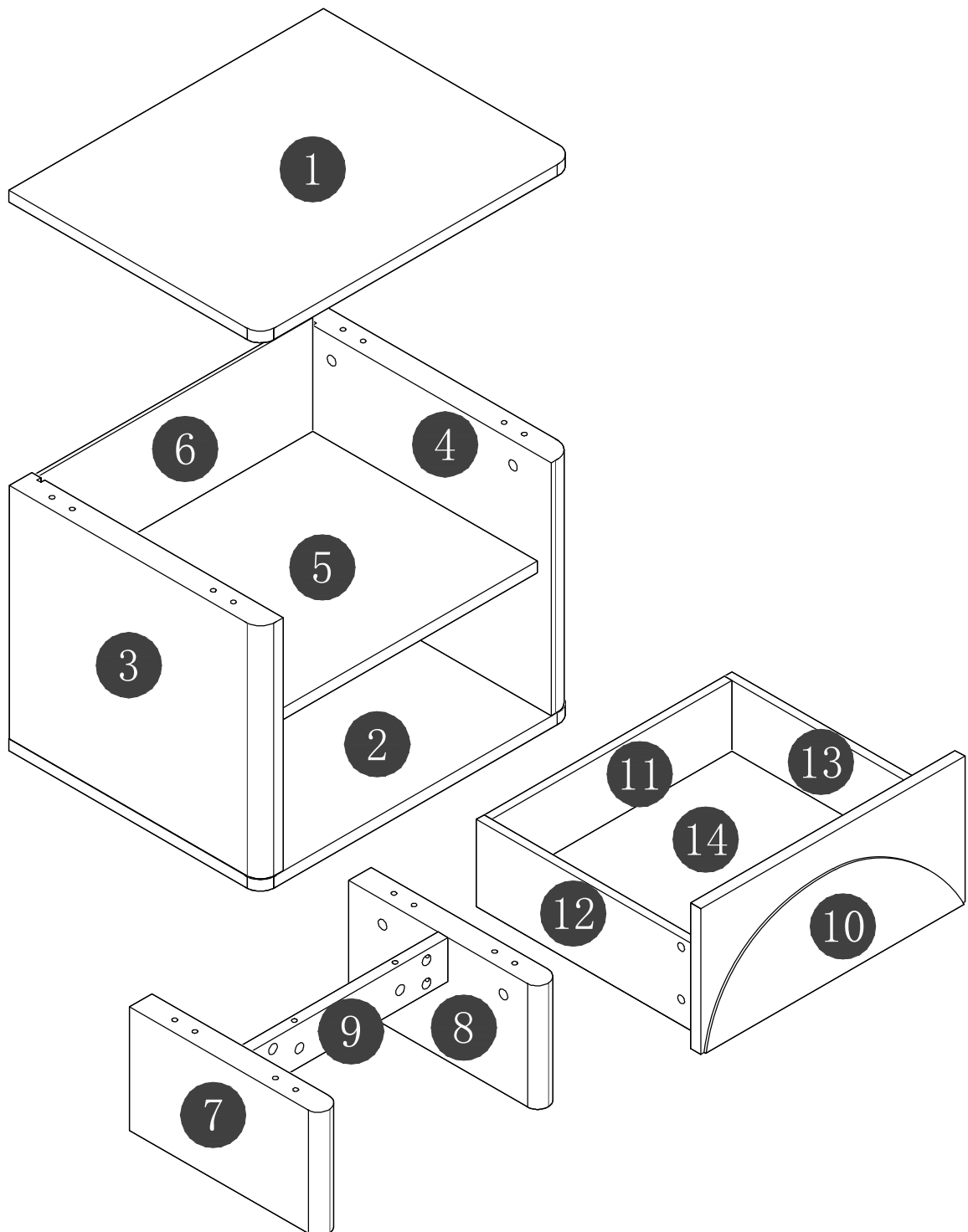
Support Site



Included in this package:

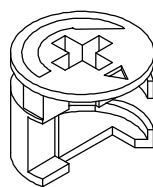
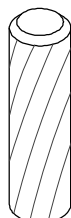
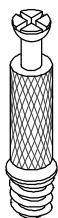
1:TOP(1)
2:BOTTOM(1)
3:LEFT END(1)
4:RIGHT END(1)
5:SHELVES(1)
6:BACK(1)
7:LEFT LEG(1)

8:RIGHT LEG(1)
9:CONNECTING OF LEGS(1)
10:DRAWER FRONT(1)
11:DRAWER BACK(1)
12:DRAWER SIDE LEFT(1)
13:DRAWER SIDE RIGHT(1)
14:DRAWER BOTTOM(1)

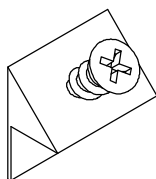


Hardware Identification

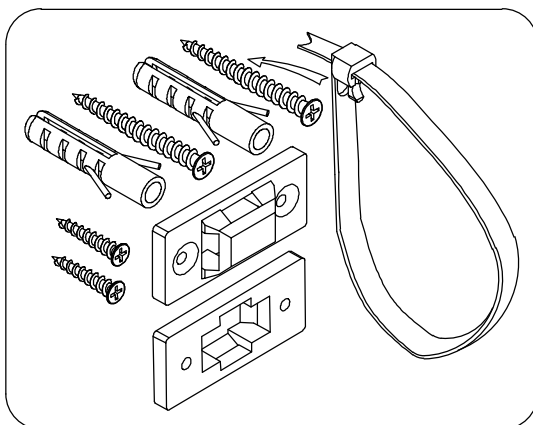
A:BOLT-18pcs M6*40mm B:WOODDOWEL-16pcs $\phi 8 \times 30$ mm C:GROMMET-18pcs $\phi 15 \times 12$ mm D:PVC STICKER-16pcs $\phi 21$ mm



E:BOLT-4pcs



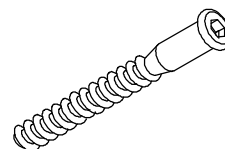
F:BOLT-1sets



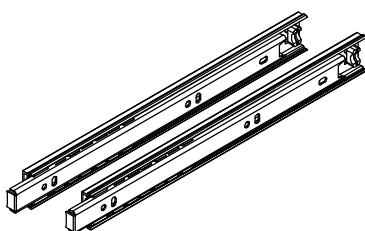
H:SPANNER-1pcs M4



Q:BOLT-4pcs $\phi 7 \times 50$ mm



N:DRAWER SLIDE-1pair



O:BOLT-8pcs M6*34mm



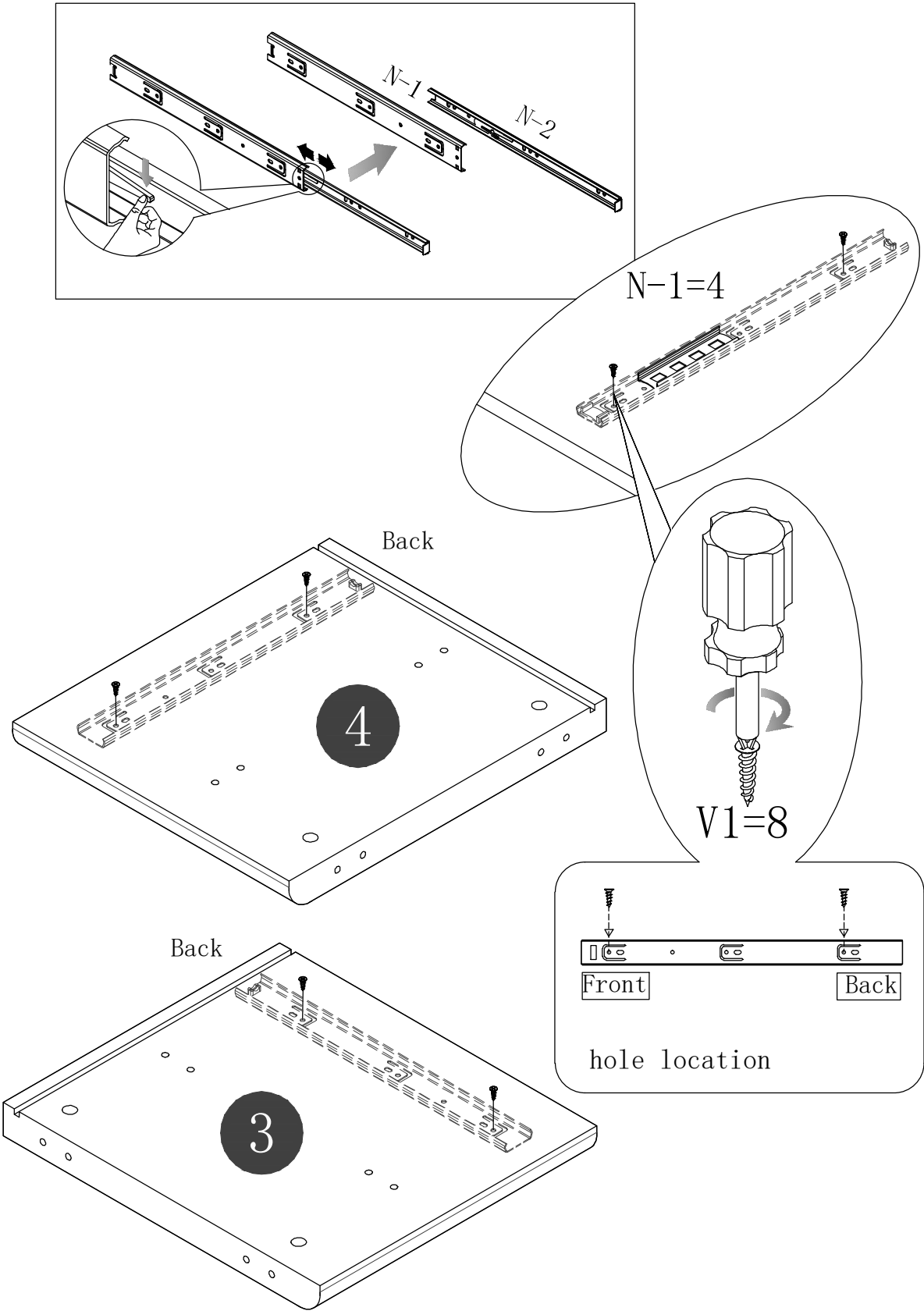
P:BOLT-8pcs $\phi 12 \times 10.5$ mm



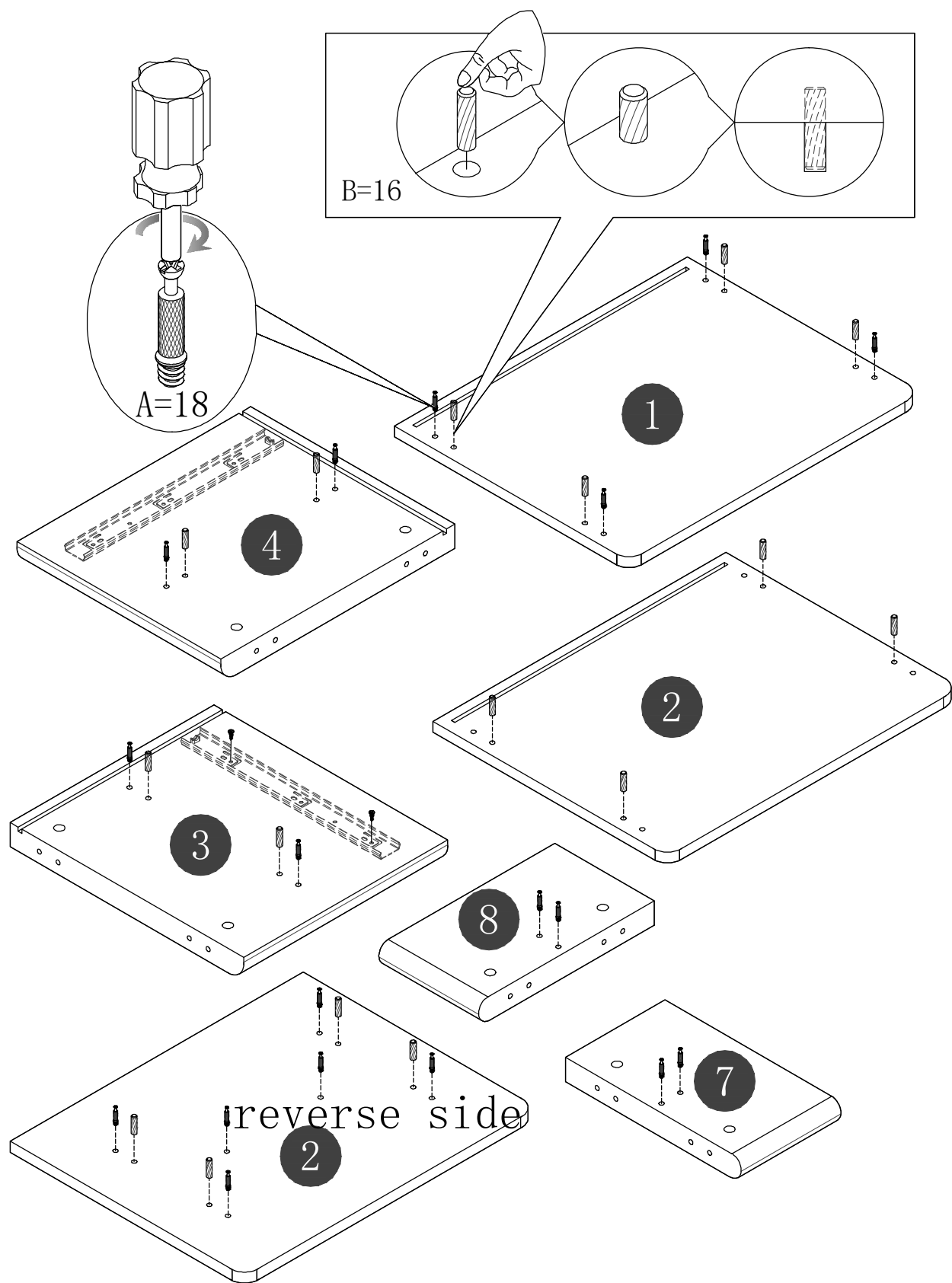
V1:SCREWS-8pcs M3.5*12mm



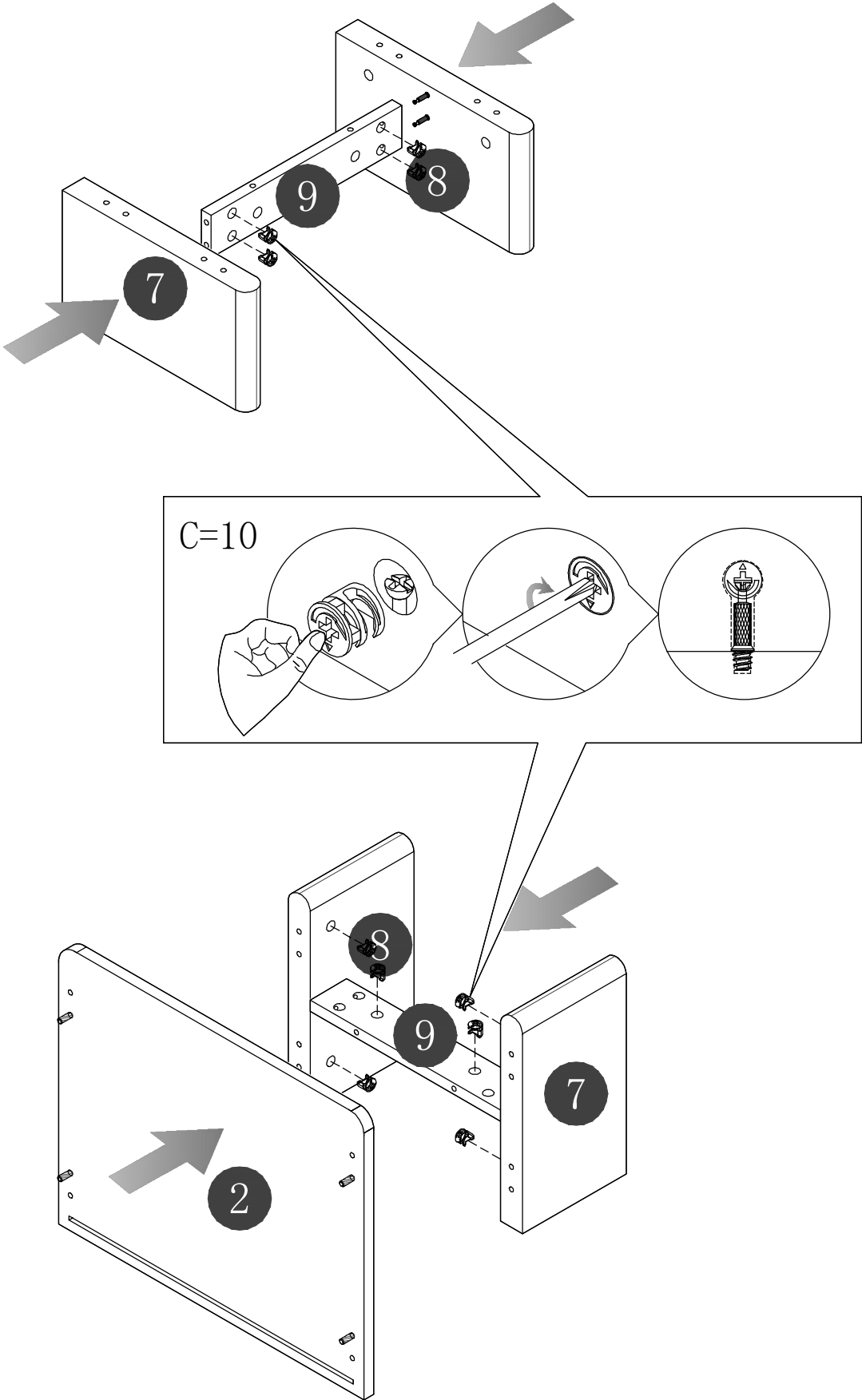
Step 1



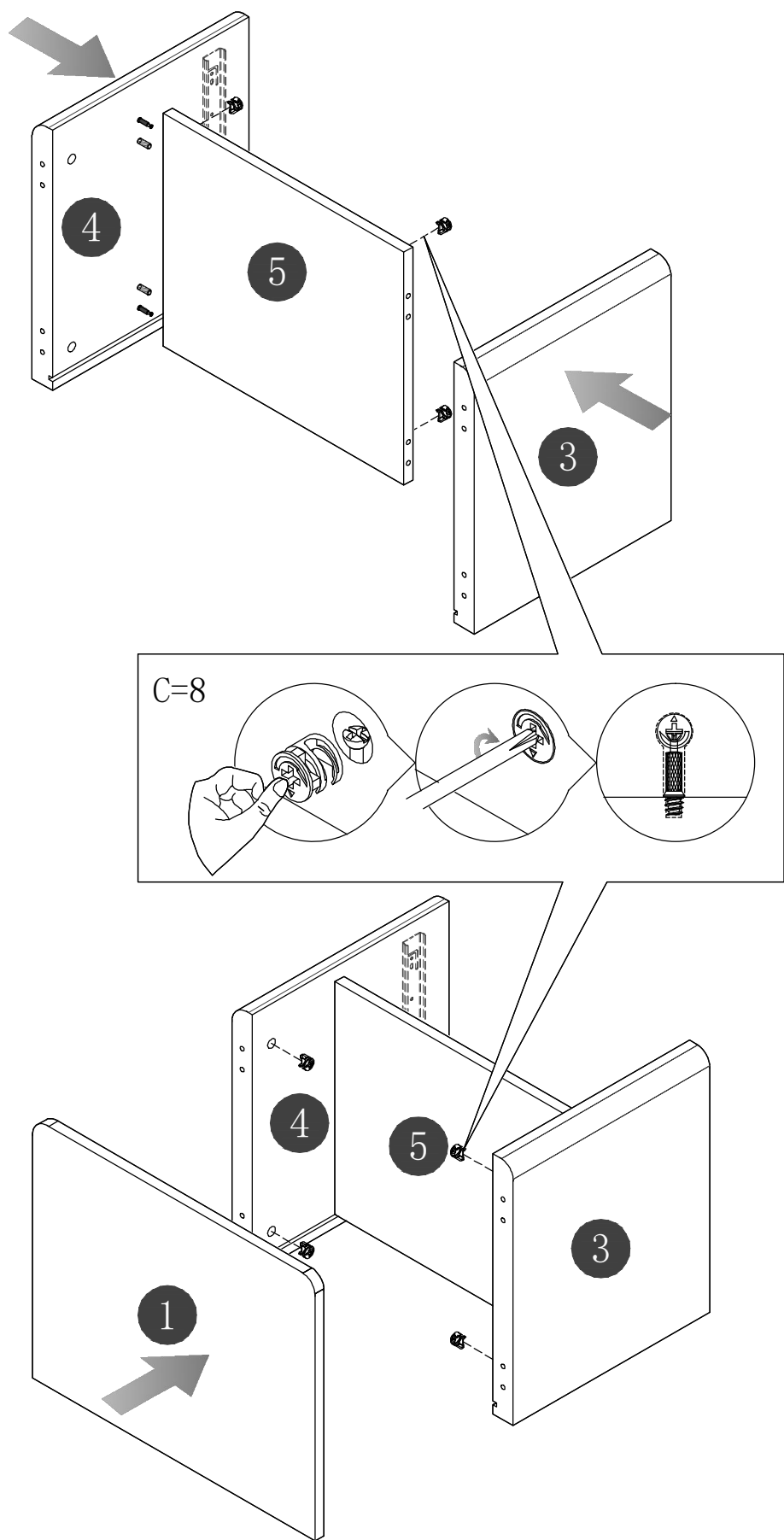
Step 2



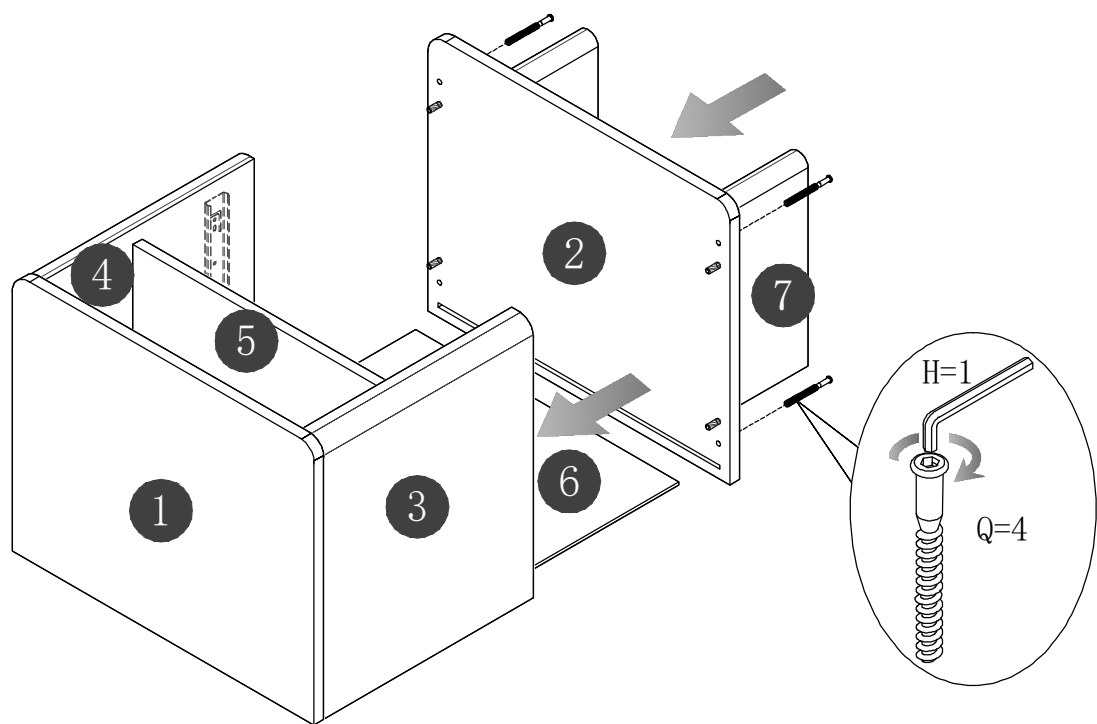
Step 3



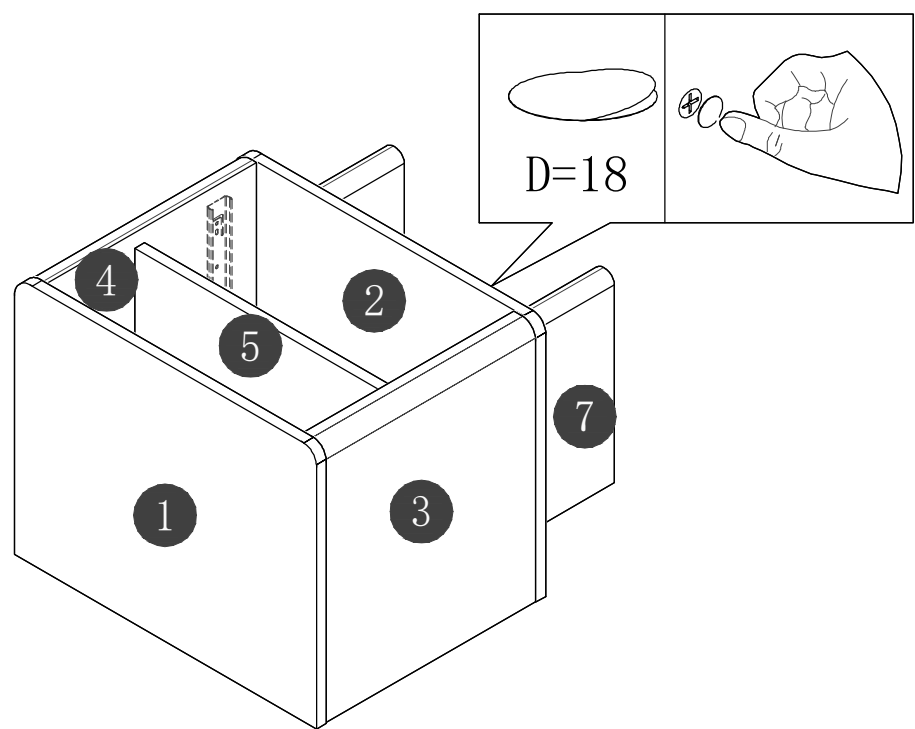
Step 4



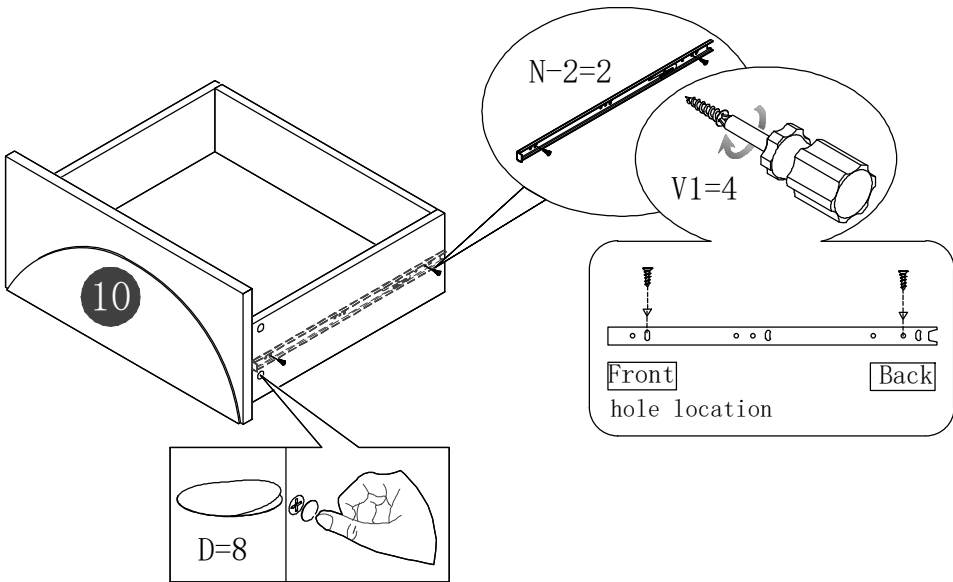
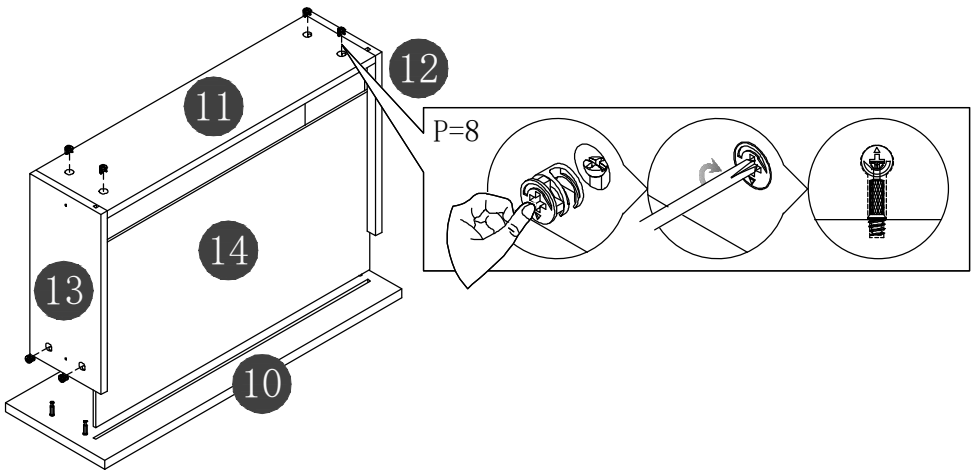
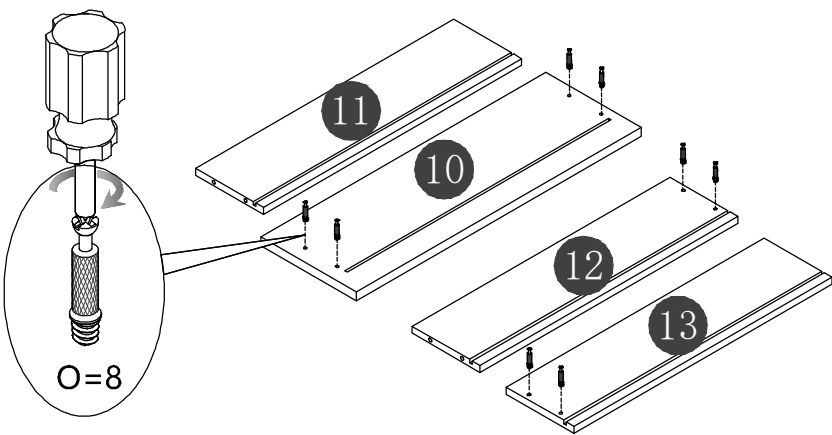
Step 5



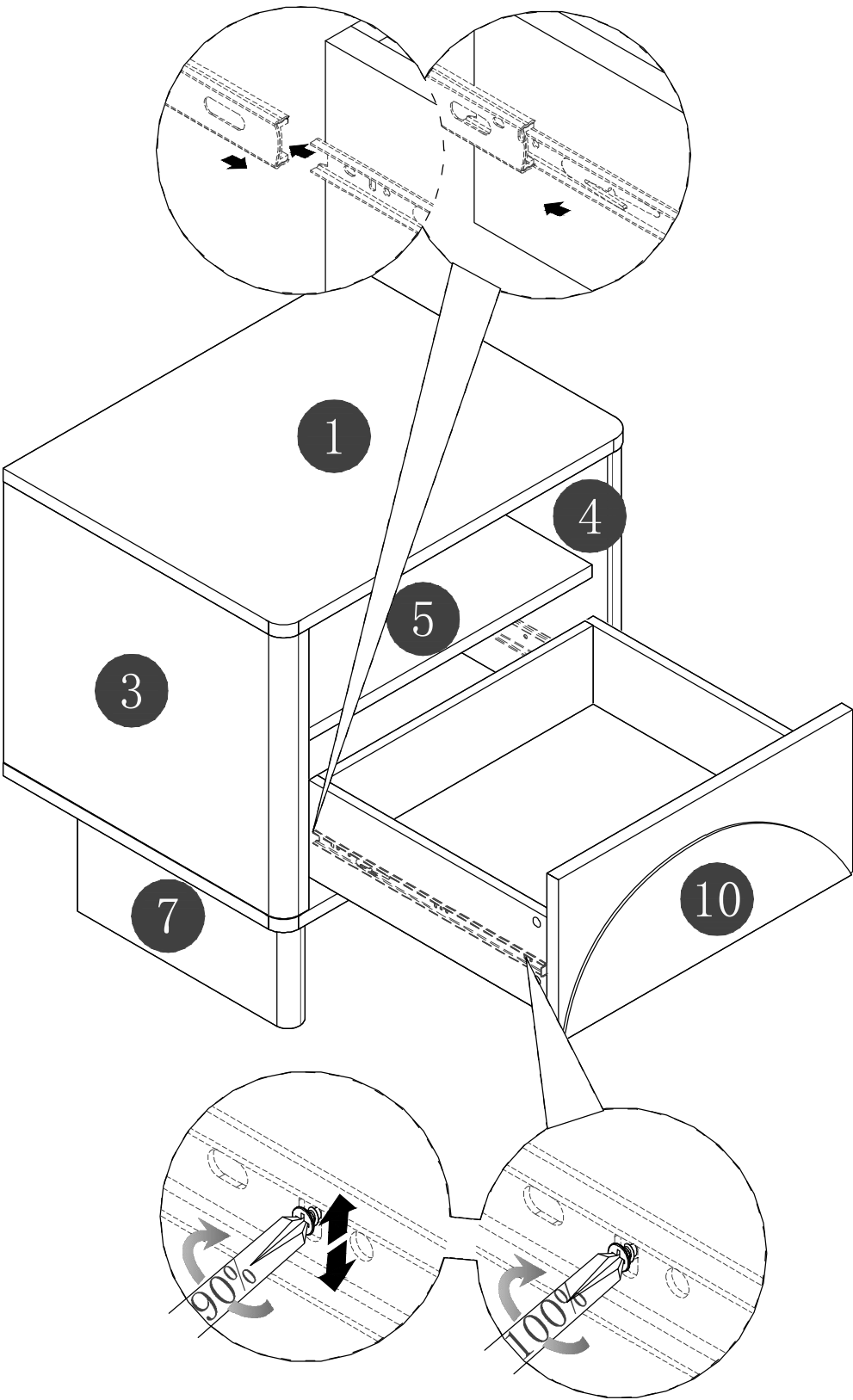
Step 6



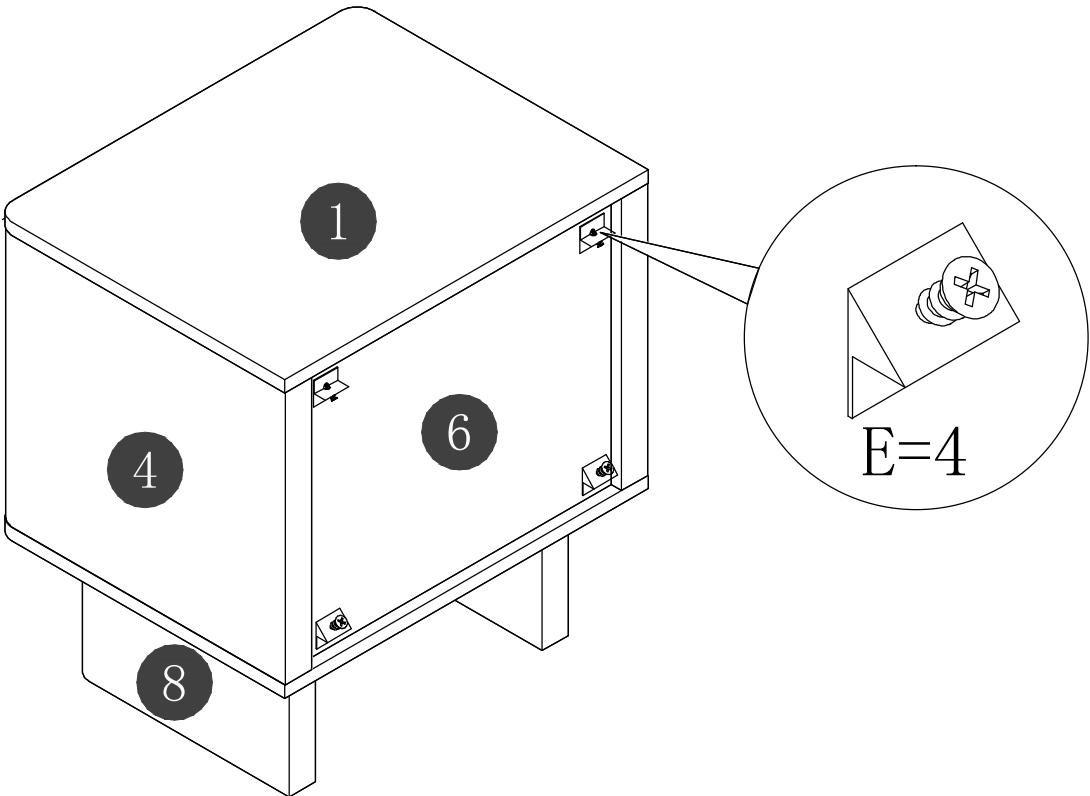
Step 7



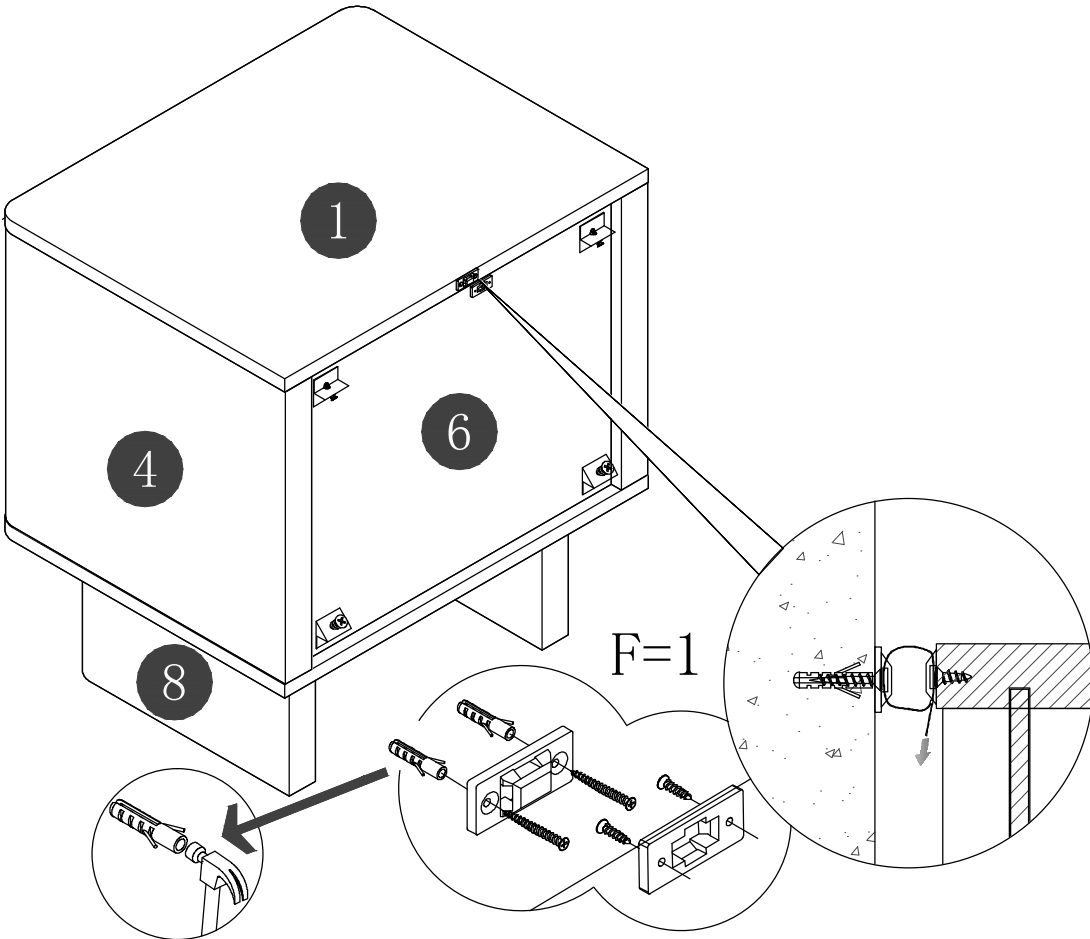
Step 8



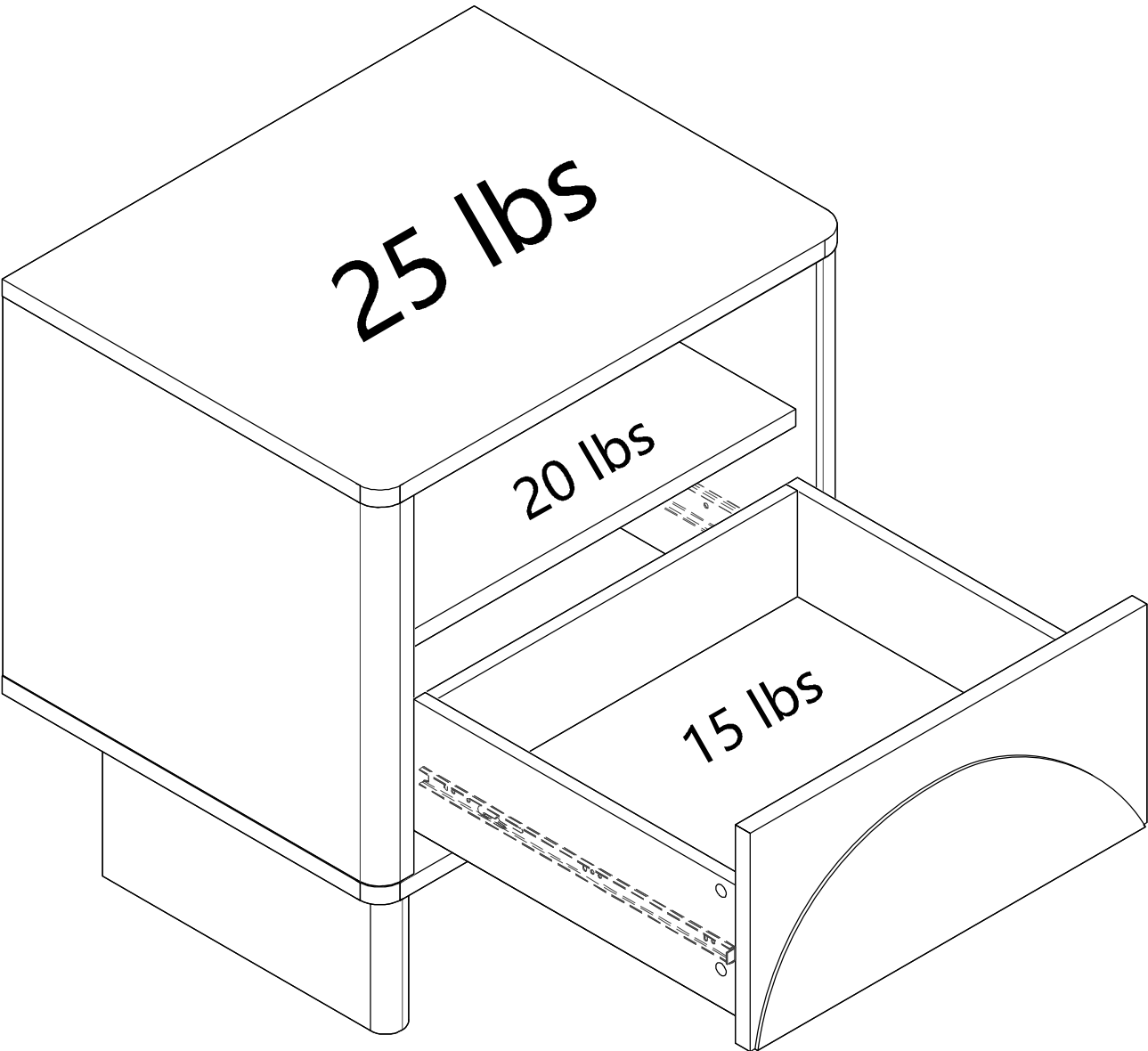
Step 9



Step 10



Step 11





WARRANTY POLICY

All Manhattan Comfort furniture products are warranted, to the original purchaser at the time of purchase and for a period of 30 days thereafter.

Our warranty is limited to new products purchased in factory sealed cartons. This warranty is valid in the United States of America and Canada.

In order to provide you with timely assistance, please thoroughly inspect your furniture for missing or defective parts immediately after opening the carton.

Manhattan Comfort offers a 30-day parts replacement warranty on all items.

Our furniture products are not intended for outdoor use.

THE WARRANTY DOES NOT COVER:

- Defects/damages by improper assembly or disassembly.
- Defects/damages caused by inappropriate use of the furniture.



319 Ridge Rd. Dayton, NJ 08810

908-888-0818