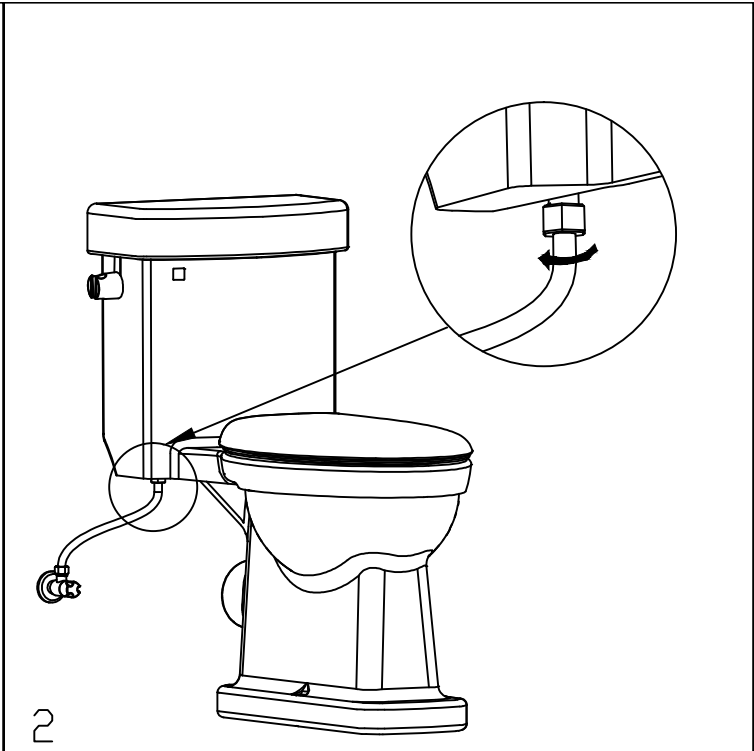
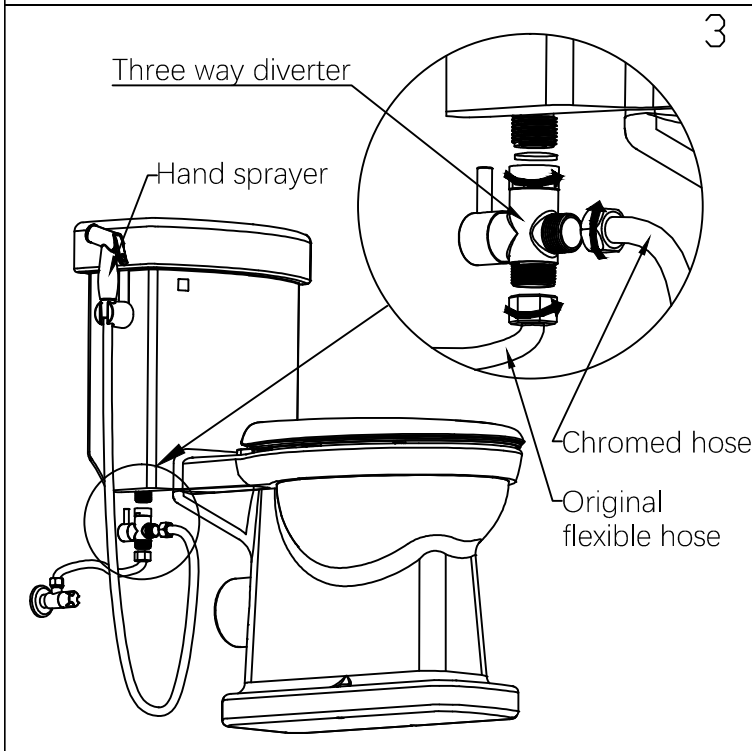


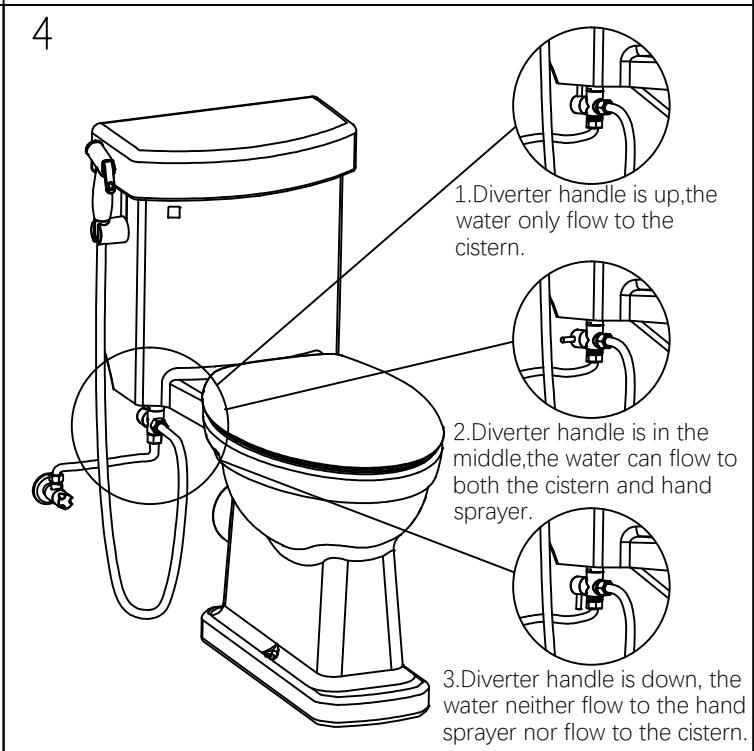
Uplift the cistern lid, and hang the hanger with bracket on the edge of the cistern.



Use hand or wrench to unscrew the nut of the flexible hose connecting the water inlet under the cistern.



Connect the three way diverter to the water inlet under the cistern, then connect the original flexible hose to the diverter. Connect the 1.5m chromed hose to side of the diverter.



After the using of the hand sprayer, the diverter handle should be up to guarantee the water flow flowing to the hand sprayer is off but the water flowing to the cistern is unblocked. please note when all the family member go out for a long term business or travelling, please ensure the diverter handle is down to close all the water flow.