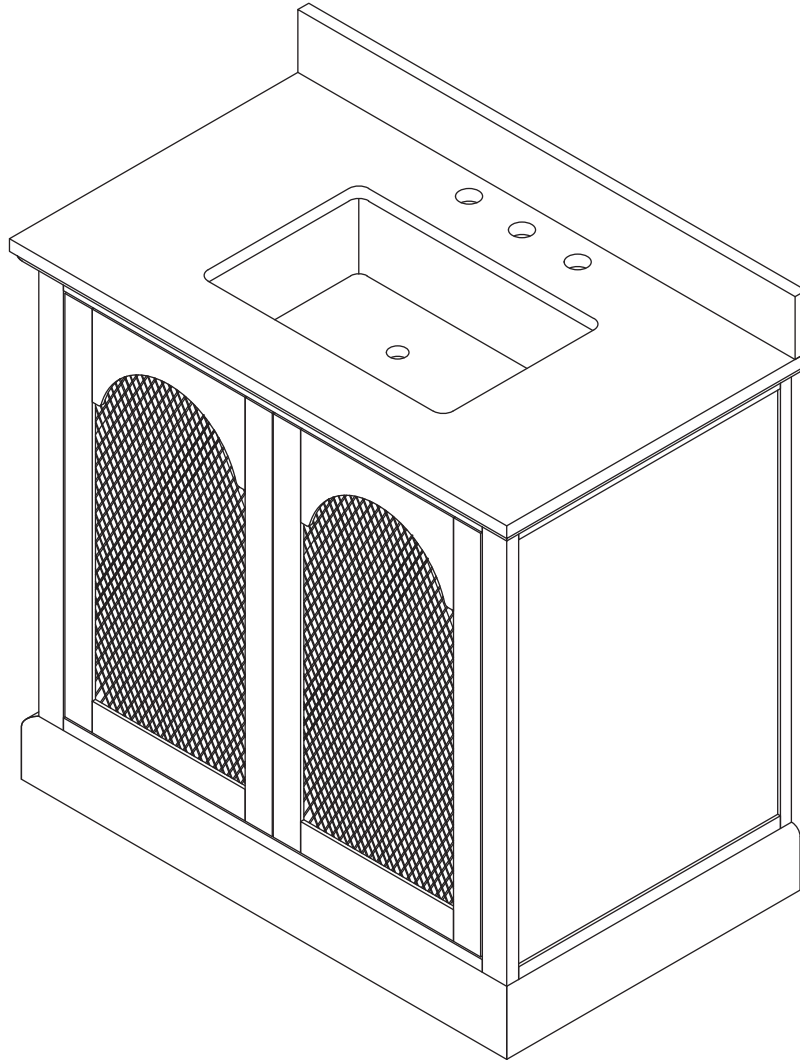


Bathroom Vanities

Assembly Instructions

E151-019-001

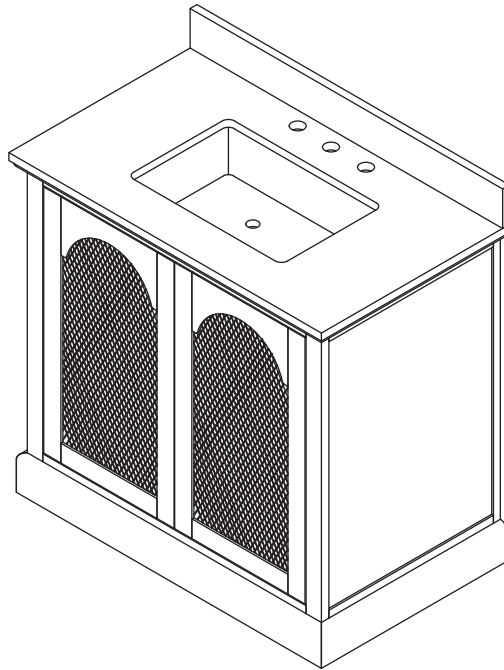


NOTE: Please read these instructions carefully before starting assembly.

We proudly provide 1-YEAR warranty, if there are any questions with the products, please feel free to contact with us.

✉ Email: furnitures.service@outlook.com

PACKAGE CONTENTS



SAFETY INFORMATION

Please read and understand this entire manual before attempting to assemble, operate or install this product.



WARNING

- Keep small parts away from children.
- Installing the item will require more than one person.

CAUTION

- **DO NOT** try to pry off top from vanity. Damage to top or vanity may occur.
- Use care when assembling the vanity; take your time and follow the assembly instructions closely.

KEEP THESE INSTRUCTIONS FOR FUTURE REFERENCE.

PREPARATION

Before beginning assembly of product, make sure all parts are present. Compare parts with package contents list and hardware contents list. If any part is missing or damaged, do not attempt to assemble the product.

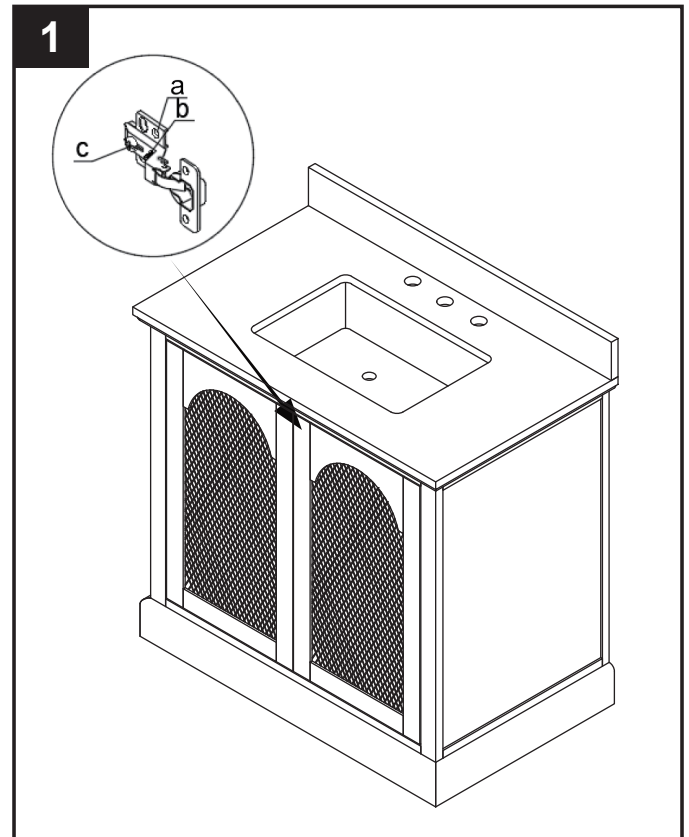
Estimated Installation Time: 20-30 minutes (24 hours for adhesive to dry).

Tools Required for Installation (not included): Silicone compound, Utility knife.

INSTALLATION INSTRUCTIONS

Step 1: Hinge Adjustable for Door Alignment

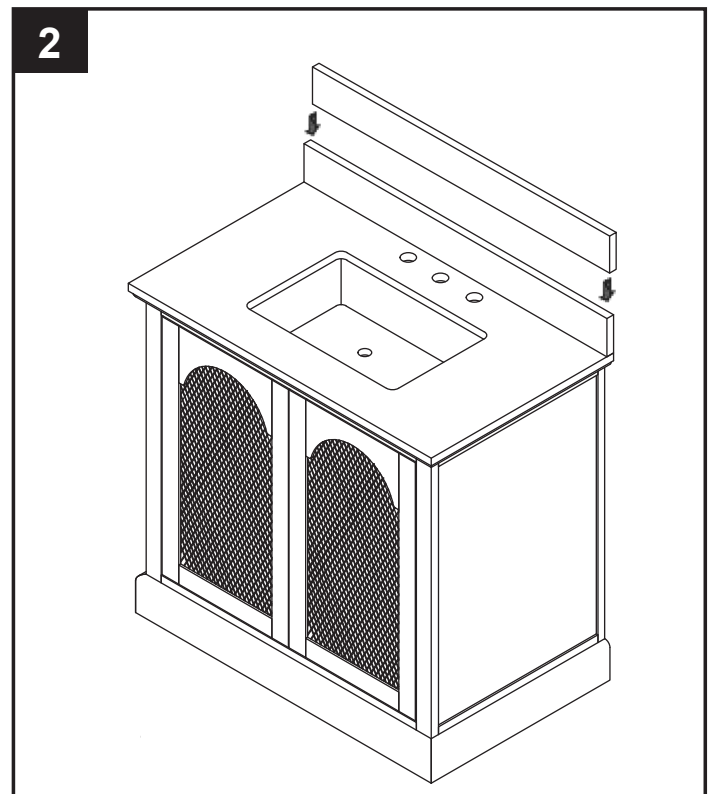
1. If the doors preassembled to vanity (A) require adjustment, follow the below options as needed: To adjust door up or down, loosen screws (a), adjust door and retighten screws. To adjust door left and right, turn screw (b) in or out. To adjust door in and out, loosen screw (c), adjust door and retighten screws.



INSTALLATION INSTRUCTIONS

Step 2: Backsplash Installation

2. To mount the backslash to the wall, apply a thin bead of silicone compound (not included) to the unpolished back side and bottom of the backslash. Position backslash as shown onto vanity top and against the wall. Clean any excess silicone compound before allowing it to dry.



CARE AND MAINTENANCE

- Dust the vanity regularly with a soft, non-lint producing cloth or household dusting product.
- You can clean the vanity with a gentle, non-abrasive household cleaner.
- Make sure to dry the wood immediately with a soft cloth or towel.
- Clean the top with a glass cleaner or other household cleansers that are non-abrasive. Using abrasive cleansers will damage the surface.
- Tips for using touch-up pen (AA): For scratches, stroke in direction of scratch. Rub off excess colorant promptly with a soft cloth.

WARRANTY

The manufacturer provides a one-year limited warranty for residential use. The vanity combo will be free from manufacturing defects, provided the original purchaser resides in or owns the home of installation, and provided the vanity combo is installed and maintained according to the installation and maintenance instructions contained within and supplied by the manufacturer. The liability will be limited to cost of products only. This warranty is in lieu of any other implied or expressed warranties. This warranty applies only to the original purchaser. This warranty does not apply to any damage on the product by accident, misuse, or modified, improper installation or by affixing accessories not produced by the manufacturer. The manufacturer shall not be legally responsible for incidental, consequential or special damages arising at or in connection with product use or performance except as may otherwise be accorded by law.