

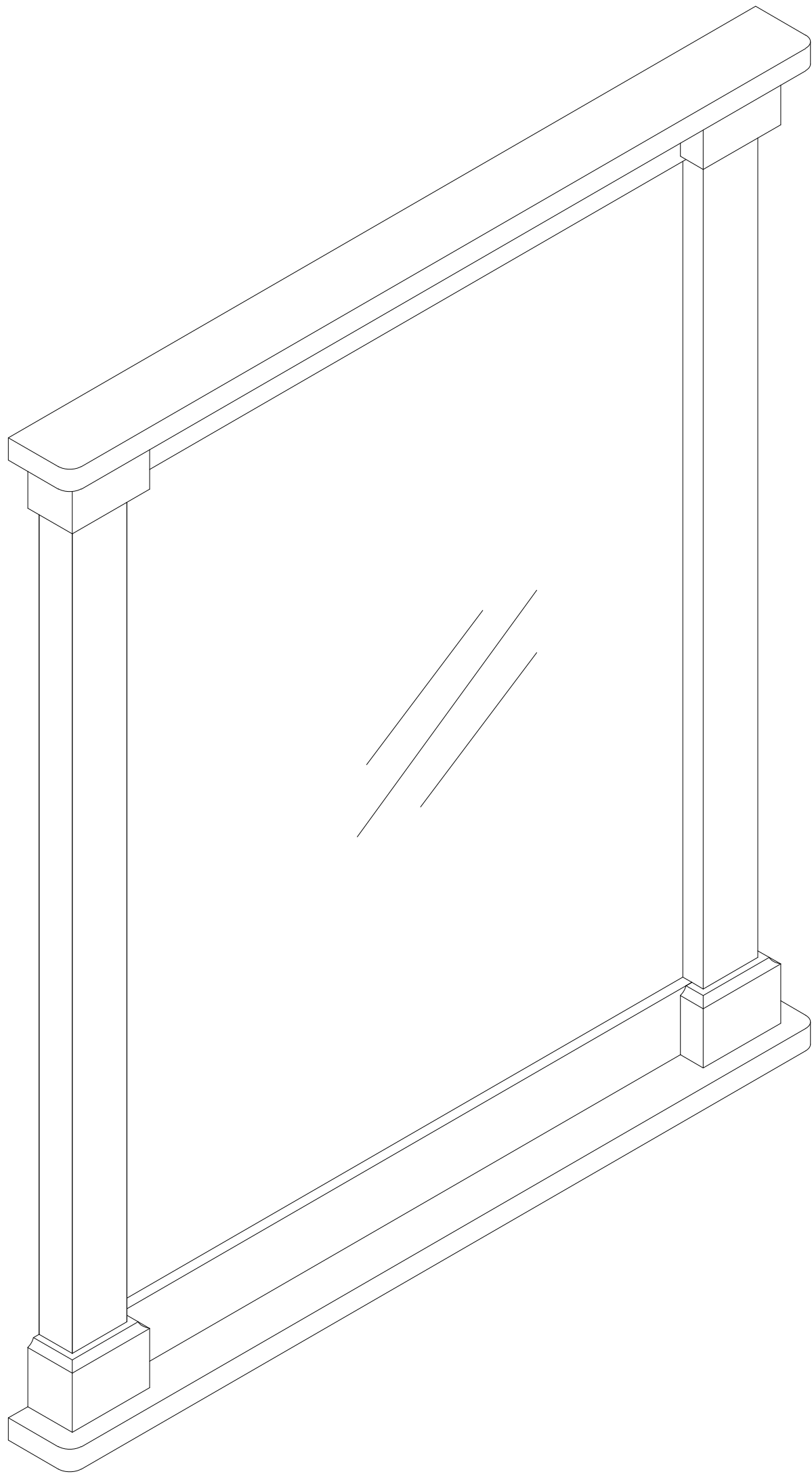
allen + roth.

ALLEN + ROTH and logo design are trademarks or registered trademarks of LF, LLC. All rights reserved.

ITEM #6245681  
MODEL #TJ02-08M2630WH

**26 IN REYNOLDS  
MIRROR IN WHITE**

**ATTACH YOUR RECEIPT HERE**



**Serial Number** \_\_\_\_\_  
**Purchase Date** \_\_\_\_\_

Thank you for purchasing this ALLEN + ROTH product.  
Questions, problems, missing parts?  
Before returning, contact us on:  
**866-439-9800**, 8 a.m. - 8 p.m., EST, Monday-Sunday or **ascs@lowes.com**.

# TABLE OF CONTENTS

---

Package Contents.....3

Safety Instruction.....3

Preparation.....4

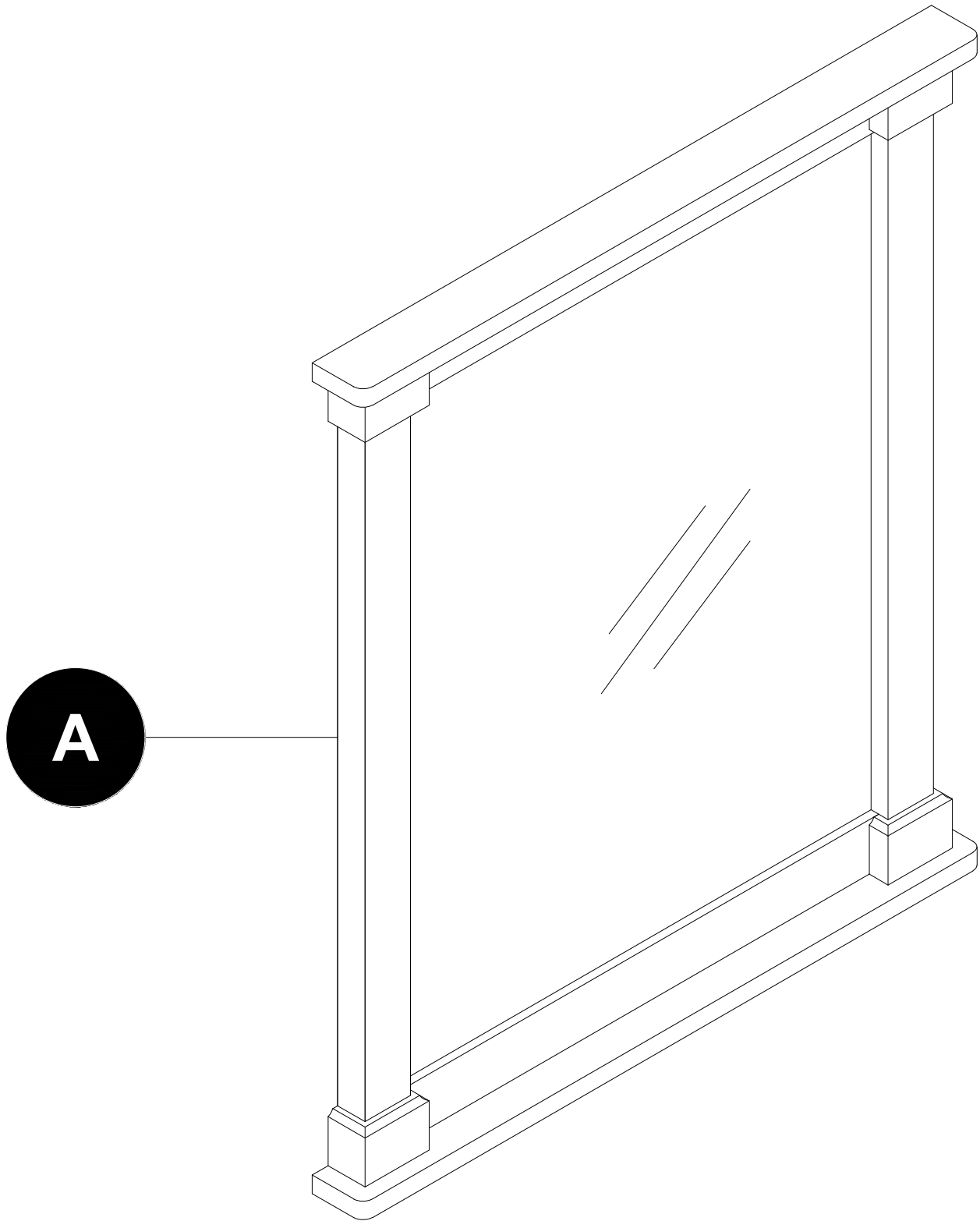
Assembly Instructions.....4

Replacement Parts List.....6

# PACKAGE CONTENTS

---

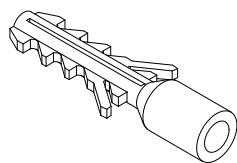
PART DESCRIPTION QUANTITY		
A	Mirror	1



# HARDWARE CONTENTS (not shown actual size)

---

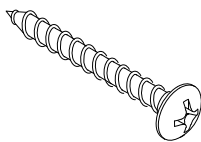
AA



Ø8x39 mm  
Anchor

Qty. 2

BB



Ø3.5x51 mm  
Screw

Qty. 2



## SAFETY INSTRUCTION

---

Please read and understand this entire manual before attempting to assemble, operate or install the product.

### CAUTION

- Follow these instructions closely, take your time, and use care while assembling this vanity.

**KEEP THESE INSTRUCTIONS FOR FUTURE REFERENCE.**

## PREPARATION

---

Before beginning assembly of product, make sure all parts are present. Compare parts with package contents list and hardware contents list. If any part is missing or damaged, do not attempt to assemble the product.

**Estimated Installation Time:** 15-20 minutes.

Tools Required for Assembly (not included): Phillips screwdriver, utility knife or scissors, power drill with drill bit.

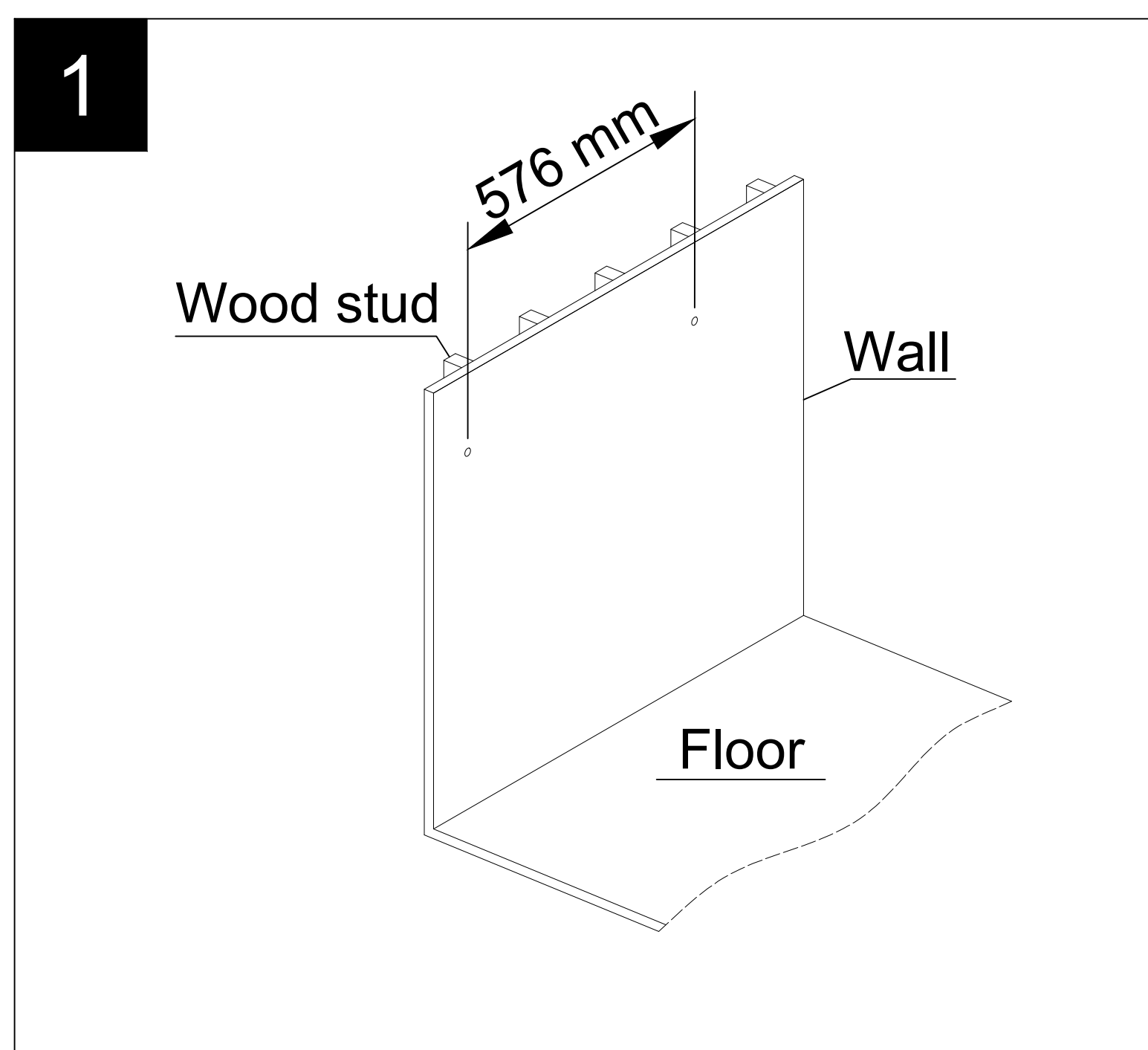
Helpful Tools (not included): Measuring tape, level.

## ASSEMBLY INSTRUCTIONS

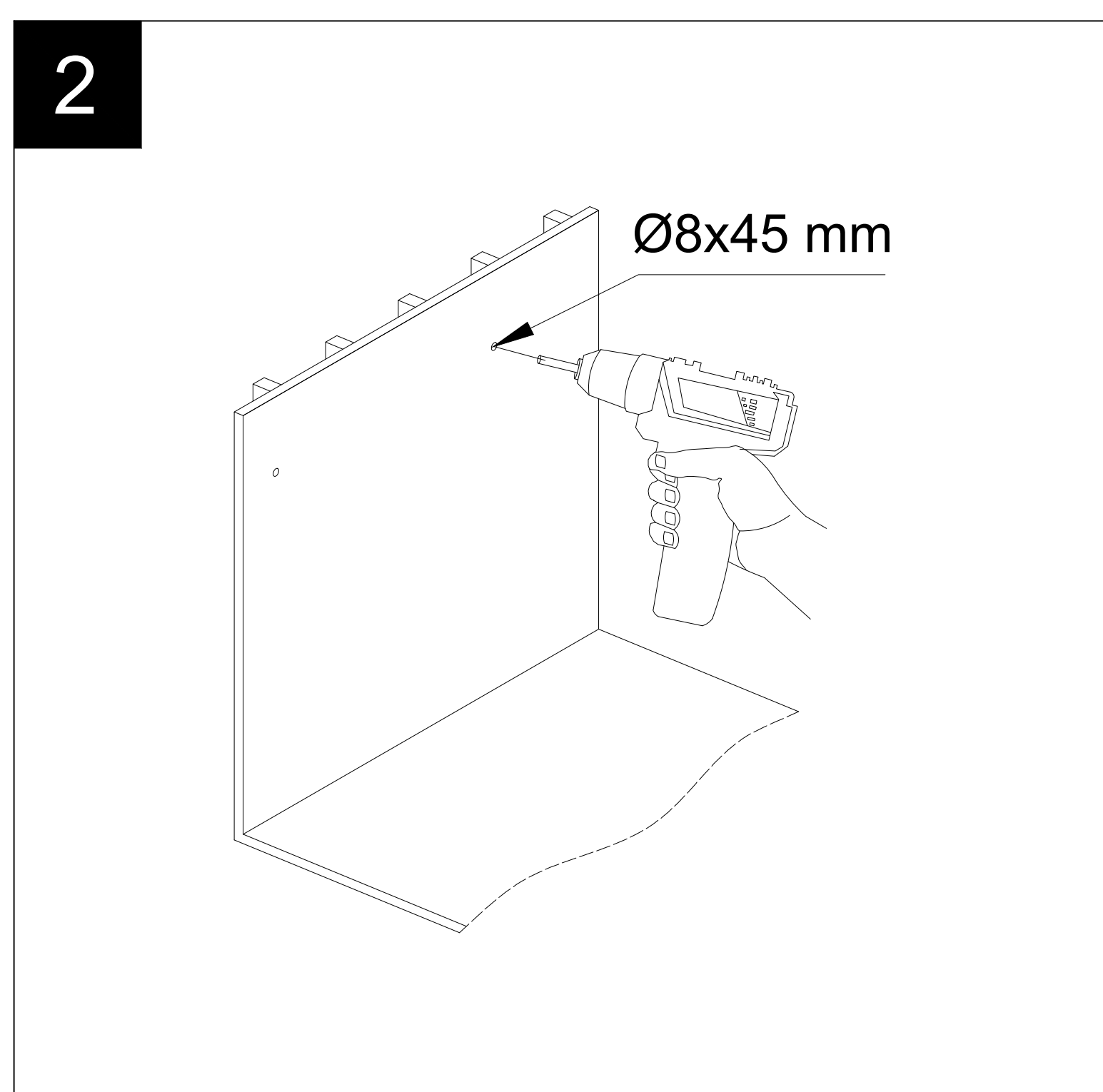
---

### 1. Pre-drilling holes for anchors.

- Measure the dimension between the two hangers attached to the mirror.
- Use a pencil to mark the designed installation location on the wall.



### 2. Pre-drill Ø8x45 mm deep holes for anchors by using a drill.



3. Installing the anchors into the wall.

Hardware Used

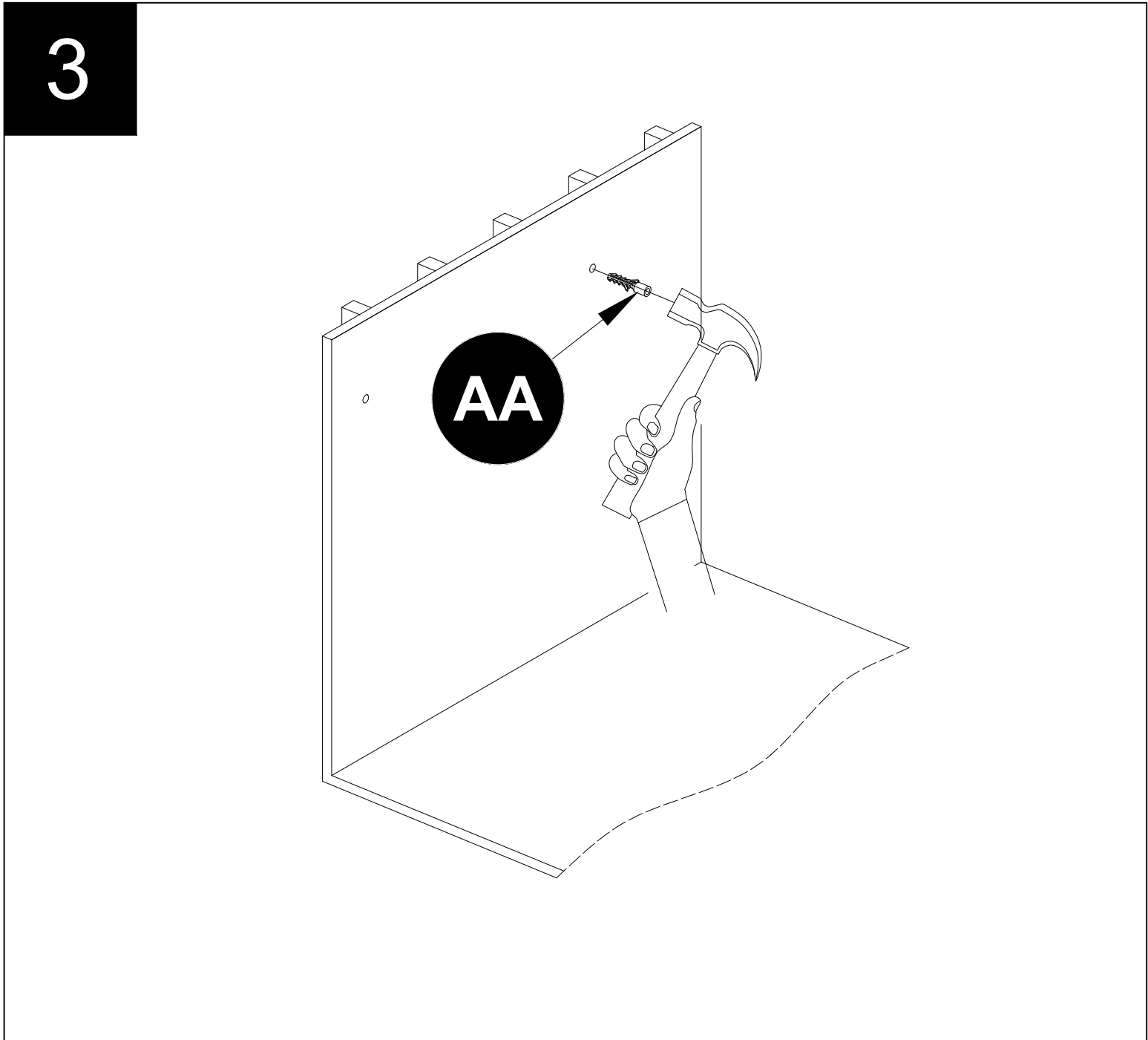
AA

Ø8x39 mm

Anchor

x2

An illustration of a metal anchor, labeled AA, which is a short, cylindrical rod with a threaded end and a flared base.



4. Tightening screws onto the wall.

- ☐

Insert the two screws (BB) into the anchors (AA).  
Leave a 1/4 in. space between the screws (BB) and the wall.

Hardware Used

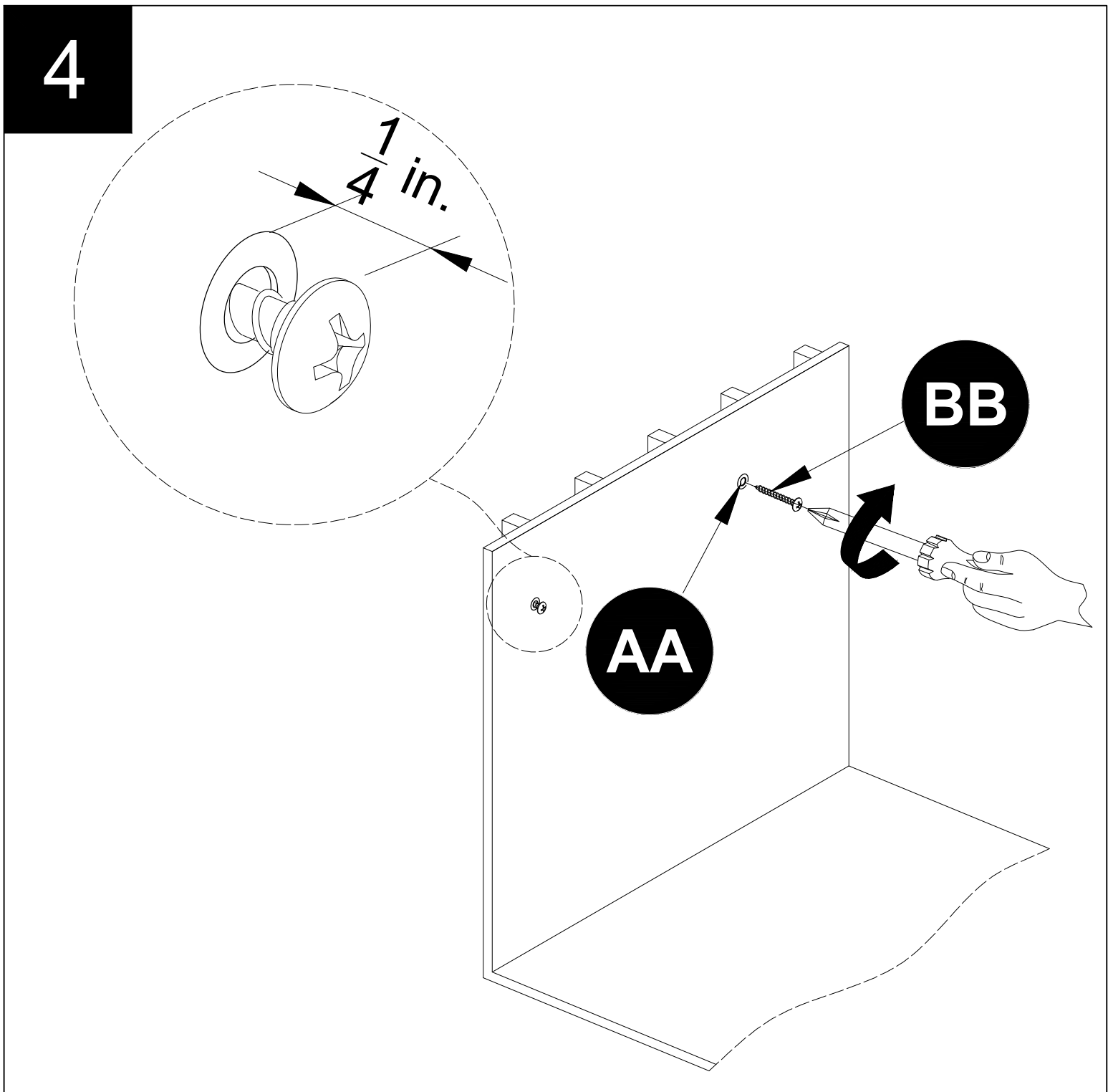
BB

Ø3.5x51 mm

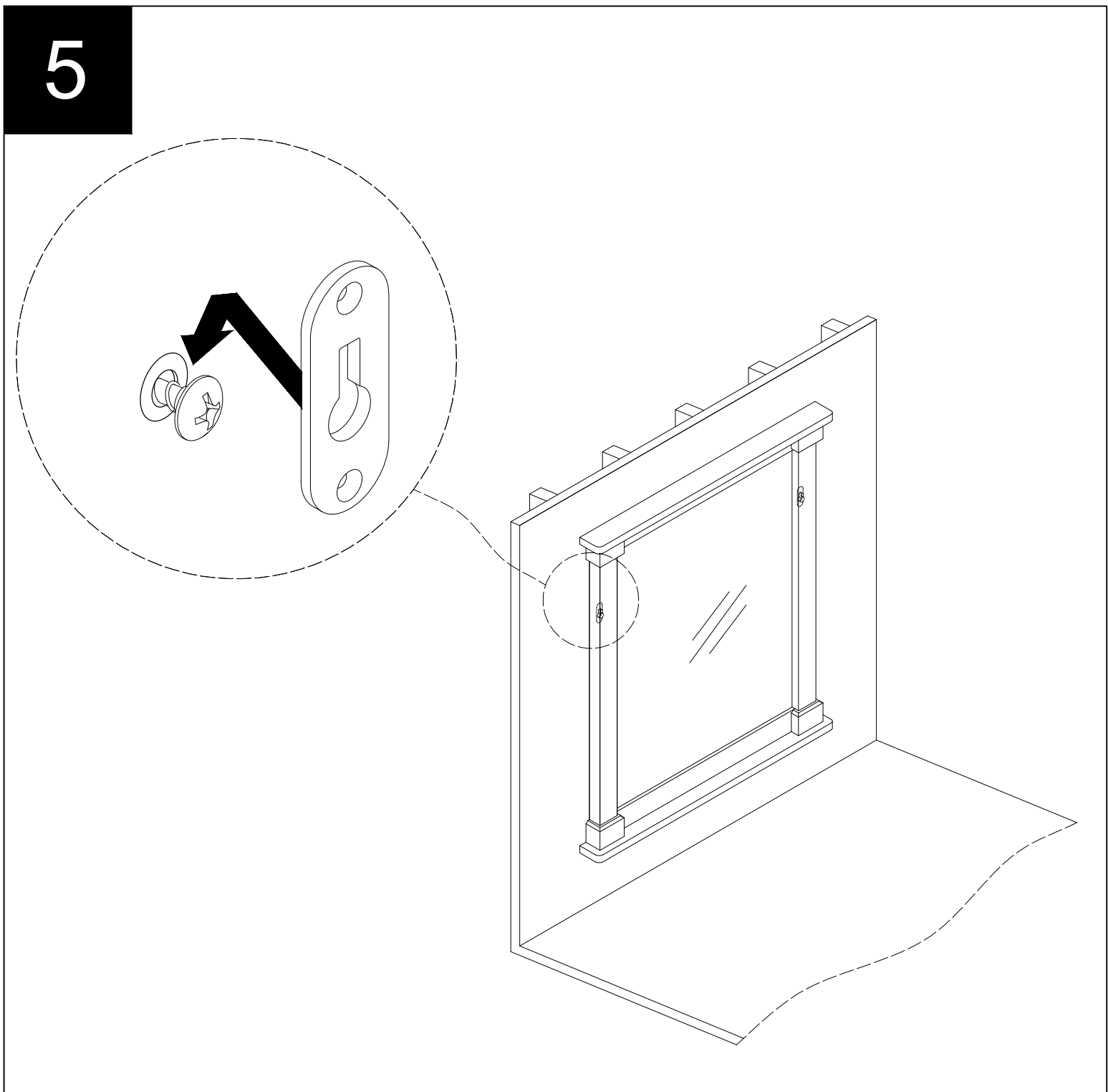
Screw

x2

An illustration of a metal screw, labeled BB, which is a long, thin rod with a threaded end and a flat head.

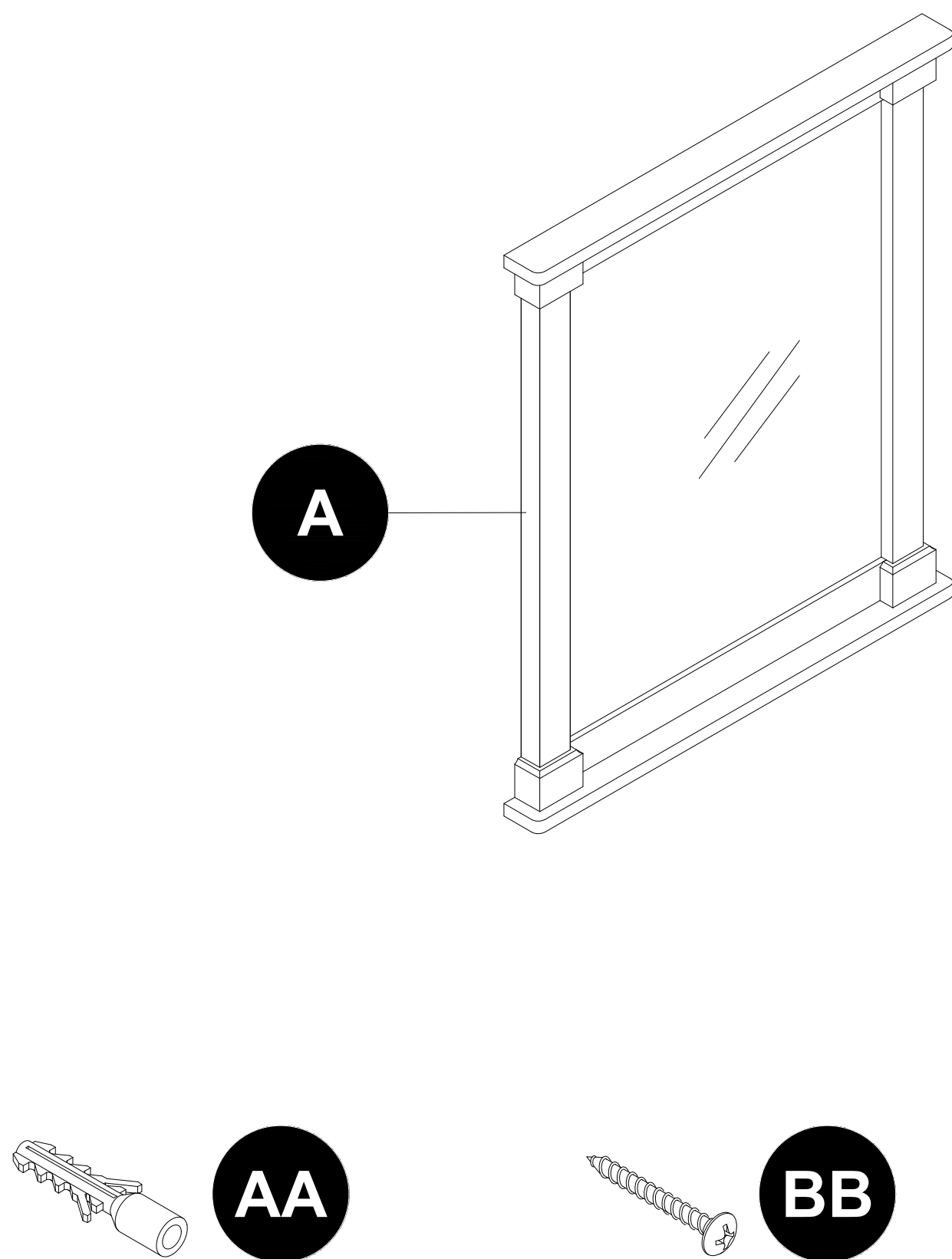


5. Hanging the mirror to the wall.



# REPLACEMENT PARTS LIST

For replacement parts, call our customer service department at **866-439-9800**, 8 a.m. - 8 p.m., EST, Monday - Sunday. You may also contact us at **ascs@lowes.com**.



PART	DESCRIPTION	PART#
AA	Anchor	AC-00839020
BB	Screw	SC-83551331