

MX19134-18WH-P
OPERATIONS MANUAL



4MODERN
4HOME

Assembly & Installation Instructions

Dear Customer :

Thank you for choosing 4modernhome!

We appreciate your business. Should you have **any questions** or encounter **any issues**, please don't hesitate to contact us. You can reach us via email at **support@4modernhome.com** or by calling **469-312-6428**. Our team is dedicated to ensuring your complete **satisfaction** with your purchase. We value your feedback, as it helps future customers in making informed decisions. We encourage you to share your experience by leaving a brief product review on the platform where you made the purchase. Additionally, you can scan the **provided code for an installation video** to assist you further. Once again, thank you for choosing 4modernhome!

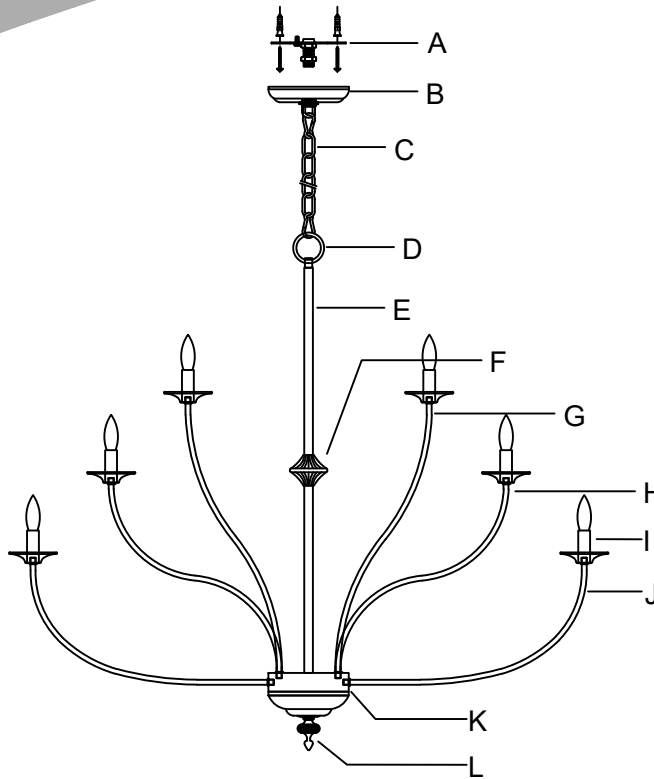
Best regards!

[4Modern home/Support Team]

Warning: If any special control devices are used with this fixture, follow the instructions carefully to assure full compliance with N.E.C.requirements. If there are any questions, contact a qualified electric contractor.

Warning: California Residents Proposition 65 This product contains lead, a chemical known to the state of California to cause cancer and birth defects or other reproductive harm. Do not place the product in your mouth. Wash your hands after handling this product.

Caution: It is highly recommended to get an electrician to install this light. Please make sure to turn the electricity off at the main circuit breaker before beginning installation. All glass is fragile.Use care when handling glass component(s)and/or lamp(s).



Installation video

Applicable bulbtype:
B10、CA10
(Not included)



E12

(Rated 120V/60Hz, bulb 25W maximum.)

WIRE CONNECTION DIAGRAM

Wires meeting safety standards are required to connect the electrical circuit.

CAUTION: Risk of fire

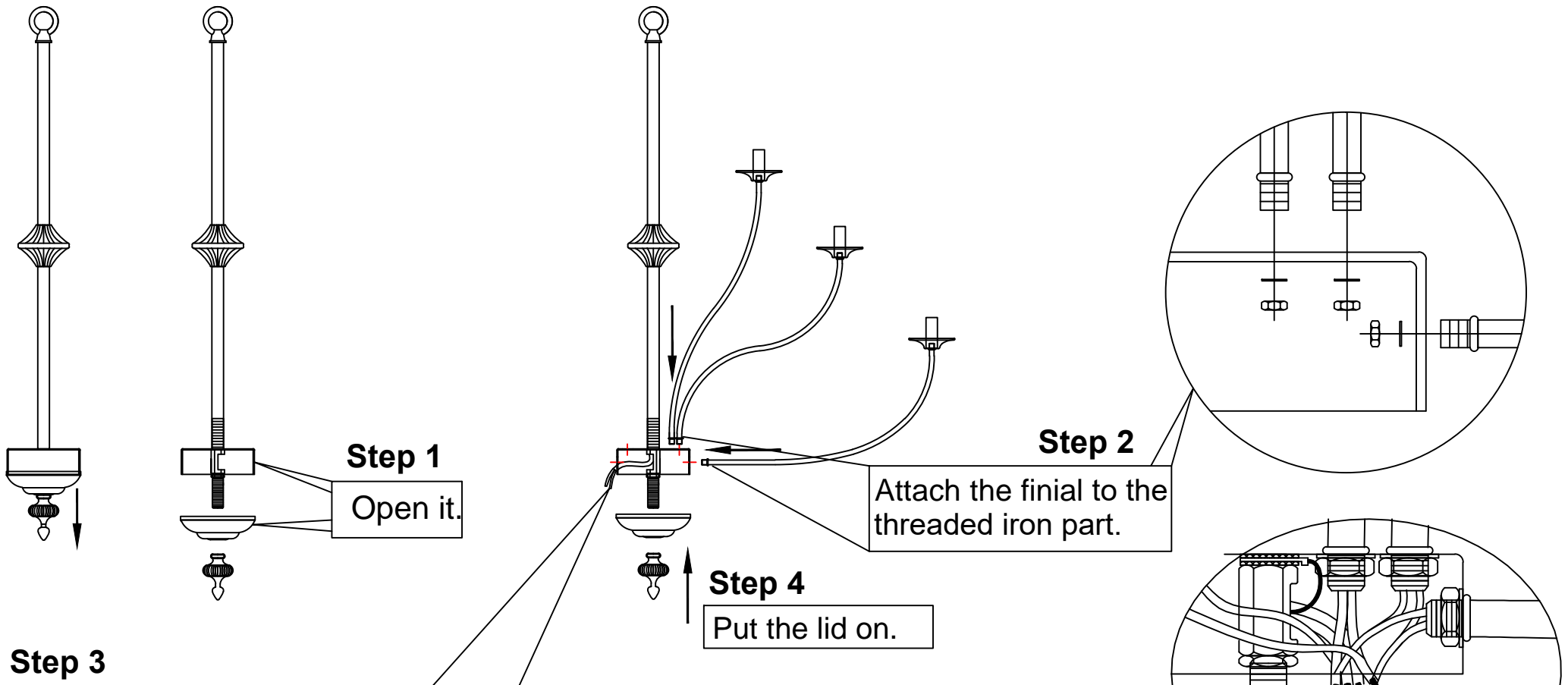


Please read all instructions carefully. Before you proceed to install, make sure that the power supply is turned off and remains off until installation is completed.

PARTS INCLUDED

| Code | Part Description | QTY |
|------|-------------------|--------|
| A | Mounting Bracket | 1 PCS |
| B | Canopy | 1 PCS |
| C | Sling Chain | 1 PCS |
| D | Lifting Ring | 1 PCS |
| E | Straight Pipe | 2 PCS |
| F | Metal Fittings | 1 PCS |
| G | Lamp Arm 1 | 3 PCS |
| H | Lamp Arm 2 | 6 PCS |
| I | Lamp Holder | 18 PCS |
| J | Lamp Arm 3 | 9 PCS |
| K | Multi-layer Cover | 1 PCS |
| L | Decorative Nut | 1 PCS |
| | | |
| | | |

Assembly and Installation Steps



Step 3

Each light arm has 2 wires, black and white. Divide the 18 lamp arms into two groups. Connect the 9 black wires (+) of the first group to lead L. Connect the 9 white wires (-) of the first group to lead N. Then connect the 9 black wires (+) of the second group to lead L of the first group. Connect the 9 white wires (-) of the second group to lead N of the first group. Lead L is connected to the second group of black wires corresponding to main wire L, and lead N is connected to the second group of white wires corresponding to main wire N. Wire connection is complete.

Assembly and Installation Steps

Step 6

6A. Lock the crossbar to the junction box of the ceiling by using 2 pcs of 5/32 screws in the accessories bag.

6B. Connect the wires. The hot/positive (+) wire is the one which has writing on it. The negative (-) wire is the one which has no writing.

6C. Cover the ceiling canopy and attach the screws to the canopy.

