

Installation Guide

TOILET TANK CARRIER



Tools and Materials



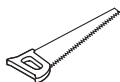
Safety Glasses



Tape Measure



Adjustable Wrench



Hacksaw



Screwdriver



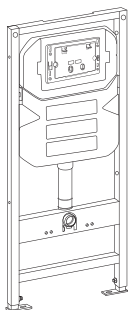
Drill



Pencil

Plus: (1)File (2)Spirit Level (3)Allen Wrench (4)Utility Knife (5)Teflon tape

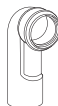
Parts List



Carrier and Tank



Pipe Clamp



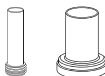
Discharge Elbow



Carrier Fixings Kit



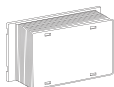
Silicone Grease



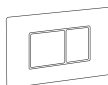
Flush&Drain Pipes



Protection Plugs



Rough-In Box



Flush Plate Installation Kit

Plus: Eridanus Wall-Hung Toilet Bowl (sold separately)

Prior to Installation



Read the following instructions carefully before you begin this installation

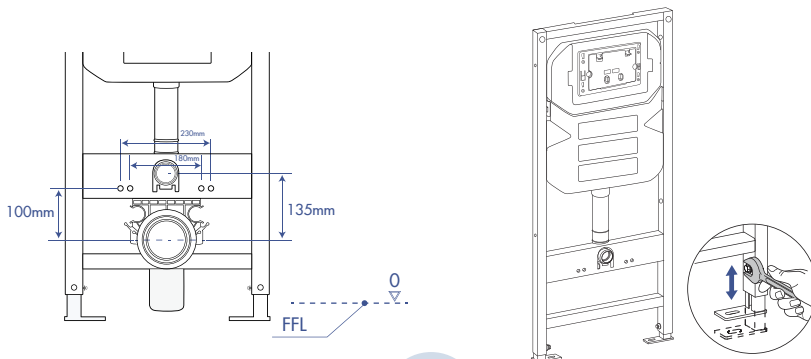
- Inspect the tank carrier to ensure no damages have occurred during transit.

- Check the dimensions of the tank carrier and make sure it is compatible with the wall hung toilet bowl.
- Observe all plumbing and building codes in accordance with your state and local requirements.
- Confirm that the item received will fit in the intended location and that plumbing fixtures are located where legally required before installation begins.
- The step-by-step guide in the installation instructions is for general reference only. Should there be any discrepancies, Eridanus cannot be held liable. Due to the complexity of installing a concealed in-wall toilet tank, which involves structural and plumbing work, it's highly recommended that the product be installed by a licensed professional.
- Read installation and maintenance instructions thoroughly before installing. Be sure to use proper tools and always wear proper personal safety equipment.
- The below instructions are for installation in a masonry or concrete wall. The in-wall toilet tank can also be installed within a standard 2x4 or 2x6 stud wall. For either method, professional installation is recommended.

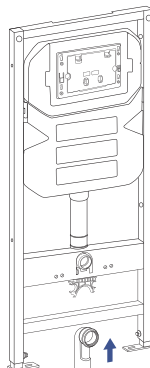
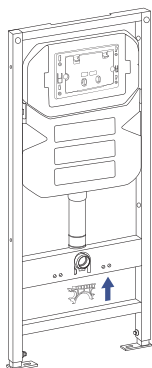
Installation Steps

Step I. Install Tank Carrier

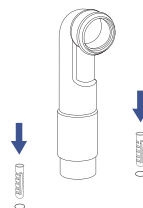
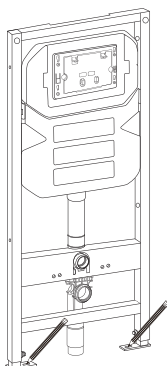
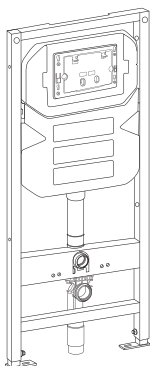
- Determine the height of your wall hung toilet bowl. A comfort height is usually between 17" and 19" from the ground.
- As per the desired height of the toilet bowl, adjust the carrier to the correct elevation by loosening the bolts for the legs at the bottom of the carrier.



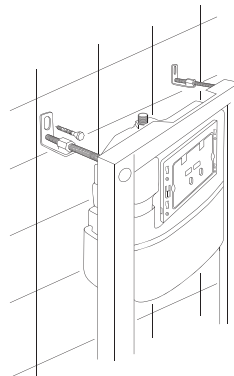
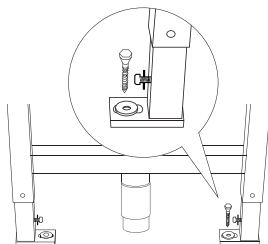
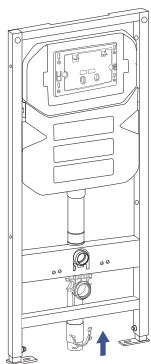
- Attach the upper bracket for discharge elbow to the carrier.
- Attach the discharge elbow to the upper bracket and ensure the length of it fits properly with the drain pipe. If necessary, cut it to an appropriate length and re-attach it to the upper bracket.



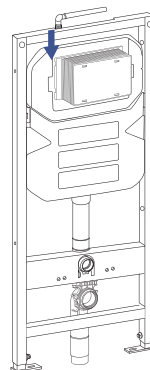
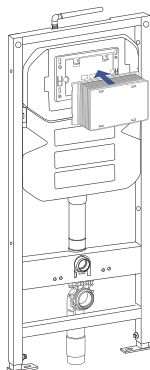
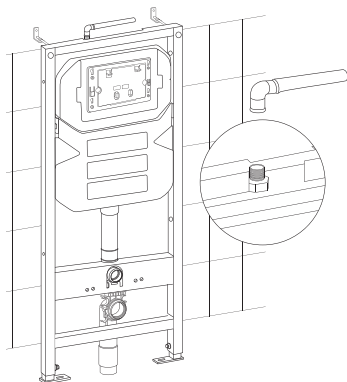
- Apply grease to the joint surface of the drain pipe and the discharge elbow; Install the carrier (with the discharge elbow attached) to the drain pipe.
- Mark the two anchor points on the floor and remove the carrier only (leave the discharge elbow on the drain pipe).
- Using the marks, drill two holes on the floor and place a plastic expansion bolt into each hole.



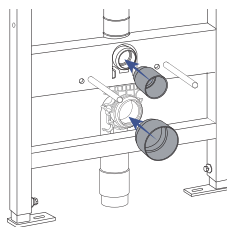
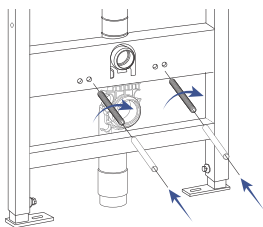
- Attach the carrier to the discharge elbow and use the lower bracket to lock it.
- Secure the two feet of the carrier by inserting a lag screw with a metal washer into each of the pre-drilled holes.
- Secure the carrier to the wall using the provided metal brackets.



- Connect the water supply pipe.
- Install the rough-in box to keep debris from entering the flushing system.

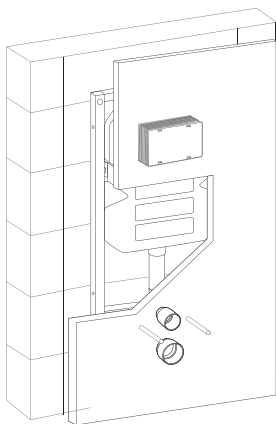


- Screw the mounting studs into proper positions and place a mud protection sleeve over each mounting stud.
- Place the protection plugs into the flush and discharge pipe openings.

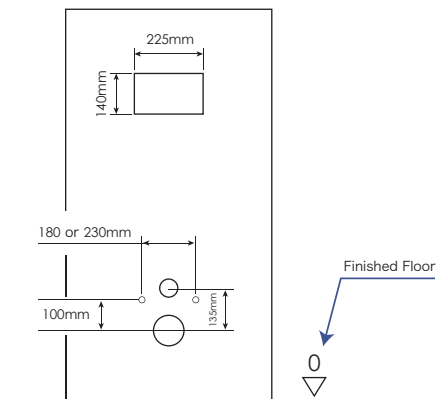


Step II. Install Finished Wall

Finished wall thickness: 13/16" to 3-1/2" (20mm to 90mm)
Clearance between tiles and rough-in box \leq 1/8" (5mm)



Hole Position Dimension Diagram for Finished Wall



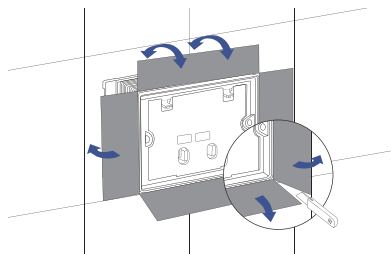
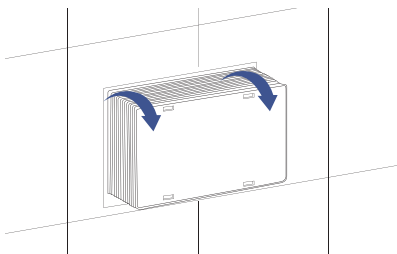
All relevant heights need to be measured manually.
Verify the key positions to avoid construction errors.

Step III. Install Toilet Bowl

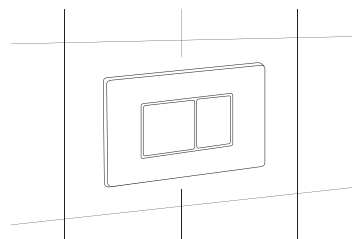
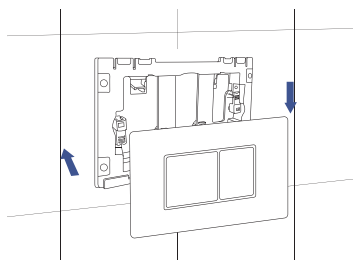
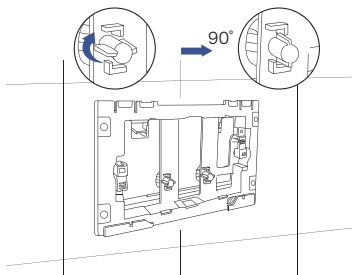
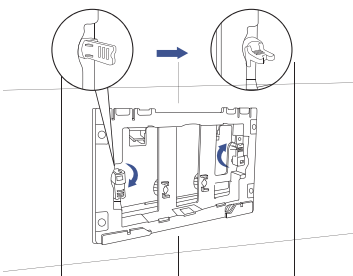
- Install the toilet bowl as per manufacturer's instructions.

Step IV. Install Flush Actuator

- Remove the cover of the rough-in box and cut it along the four corners. Once finished, bend and break away the four panels. Make sure the panels do not extend beyond the finished wall.



- Place the mounting frame into the actuator opening and insert the actuator bolts with the head pointing toward the center and turn 90 degrees.
- Insert each pressing rod into the actuator and turn 90 degrees clockwise until it snaps into place.
- Install the flush plate and test to make sure the toilet flushes properly.



Installation Guide