

# SOCKET AIR LIGHT™

Contains a Powerful  
3 Speed Fan!

**3 LIGHT SETTINGS**  
High, Medium & Low

**RGB & COLOR SELECT**

**NO WIRING**

Fits Standard  
Light Sockets



RGB or COLOR SELECT



**2100  
LUMENS**

RECESSED LIGHT  
EXTENDER INCLUDED



Remote  
Included



Socket  
Air  
unit



Remote  
Control



Remote Control Holder  
With: 2 screws, 2 anchors  
and 1 3M tape



## INSTALLATION No tools required. Compatible with any standard E26 socket.

Turn the power OFF using the wall light switch for that socket  
before installing the unit.

1



Remove the protective cap.

2



Twist the Socket Air clockwise  
to install it. Do not overtighten, but  
make sure the fan is fully secured.

3



If needed, use the socket extender.  
Screw it in clockwise. Do not overtighten,  
but make sure the fan is fully secured.  
Then, follow step 1 to install the Socket  
Air unit.

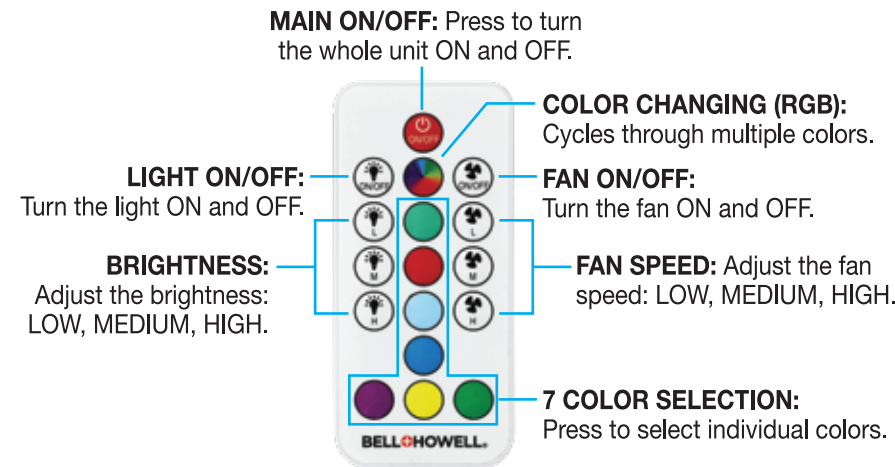
4

Turn the Socket Air ON using the  
wall light switch for that socket.  
You can use the remote (included)  
to further control the light and fan  
settings. Refer to "USING THE  
REMOTE" section on next page.  
Use the wall light switch to turn  
the unit OFF (fan and light).

**EQUIPEED WITH SAFETY FEATURE:** The fan will stop if it gets jammed.  
It will resume work after the jam has been cleared.

## USING THE REMOTE Remote working distance: up to 16 feet (5m)

Remove the plastic tab from the battery compartment to activate  
the CR2025 battery. Refer to Battery Placement instructions when  
need to replace the battery.



## MEMORY FEATURE:

**The memory feature of remote is both for the light and fan.**

The unit can return to the last setting mode that was selected, including remote's Light and Fan ON/OFF button, remote's Main ON/OFF button, and wall switch.

- If you turn the white light off using remote's Light ON/OFF, remote's Main ON/OFF button, and wall switch, the last setting (Low/Medium/High) will be saved.
- If you turn the fan off using remote's Fan ON/OFF, remote's Main ON/OFF button, and wall switch, the last setting (Low/Medium/High) will be saved.  
For example: If the light was set on Low brightness and Fan set on low speed, the setting will resume when you turn the unit back on using remote's Main ON/OFF button and wall switch.
- If you turn the RGB color light off using remote's Main ON/OFF button, and wall switch, the last setting (RGB solid color or RGB color changing) will be saved.  
For example: If the Light was set on RGB color and Fan off, the same setting will resume when you turn the unit back on using remote's Main ON/OFF button and wall switch.

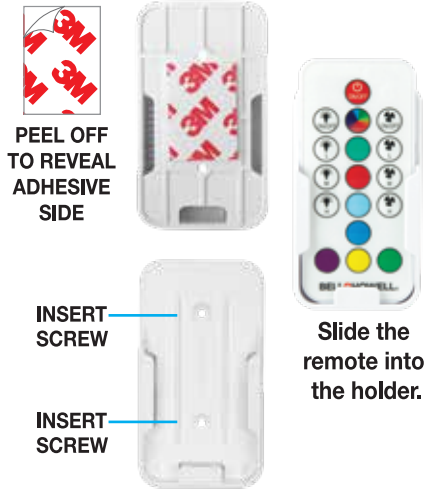
MOUNTING OF REMOTE HOLDER

Using 3M tape (included):

- Peel off backing and place it with the adhesive side down on the back of the holder. Press down for a few seconds.
- Peel off the other side and place on the desired smooth surface. Press the holder firmly onto the surface for a few seconds.

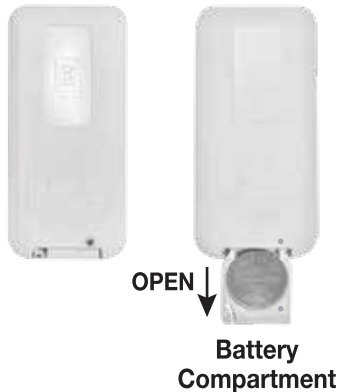
Using screws/anchors (included):

Insert each screw into the openings of the remote holder. Tighten to secure.



REMOTE BATTERY PLACEMENT

1. Remove the small screw from the back of the remote.
2. Pull the battery compartment tray to open it.
3. Insert a new 1 CR2025 battery with a positive “+” facing up.
4. Once the battery is inserted, push the tray back in until it is fully inserted.
5. Place the screw back in and tighten it.



SPECIFICATIONS

**Power rating:** 110-120VAC, 60Hz, Max 26W  
**LED counts:** 42pcs white SMD+42pcs RGB  
**Lumens:** up to 2100lm (for white light)  
**Color Temperature:** 6500K-7500K  
**Product Size:** D 10.2 x 5.31 inches (D258x135mm)  
**Extender Size:** H 4.61 inches (117mm)  
**Weight:** 505g/1.11lbs  
**Mounting:** Screw into any standard E26 socket

IMPORTANT SAFEGUARDS:

- KEEP FAN OUT OF REACH OF CHILDREN.
- ADDED WEIGHT OF THE DEVICE MAY CAUSE INSTABILITY OF A FREE STANDING PORTABLE LUMINAIRE.
- USE ONLY WITH A PORTABLE TABLE LAMP THAT IS PROVIDED WITH A SHADE.
- USE IN PORTABLE TABLE LAMPS IN WHICH THE DISTANCE FROM THE BOTTOM OF THE BASE TO THE TOP OF THE LAMPHOLDER DOES NOT EXCEED THREE (3) TIMES THE MINIMUM BASE DIAMETER.
- CONSULT A QUALIFIED ELECTRICIAN TO ENSURE CORRECT BRANCH CIRCUIT CONDUCTOR.
- THIS PRODUCT MUST BE INSTALLED IN ACCORDANCE WITH THE APPLICABLE INSTALLATION CODE BY A PERSON FAMILIAR WITH THE CONSTRUCTION AND OPERATION OF THE PRODUCT AND THE HAZARDS INVOLVED.
- THIS DEVICE CAN ONLY BE INSTALLED ON STATIONARY LIGHT SOCKET, CANNOT INSTALL ON ANY NON STATIONARY OR LOOSE SETTING LIGHT SOCKET.
- TO REDUCE THE RISK OF ELECTRIC SHOCK, THIS UNIT MUST BE INSTALLED WITH AN ISOLATING WALL CONTROL/SWITCH.
- DUE TO SOCKET FANLIGHT HIGH INTENSITY LED BULBS, DO NOT STARE DIRECTLY INTO THE LED LIGHT.
- RISK OF ELECTRIC SHOCK - USE IN DRY LOCATION ONLY.
- SWITCH OFF THE POWER BEFORE INSTALLING THE UNIT.
- NEVER PLACE ANYTHING INTO THE UNIT BLADES WHEN IT’S RUNNING.
- USE IN OPEN LUMINAIRE ONLY.
- DO NOT USE WITH DIMMERS.
- THIS DEVICE IS NOT INTENDED FOR USE WITH EMERGENCY EXITS.
- DO NOT OPERATE ANY APPLIANCE AFTER IT MALFUNCTIONS, OR IS DROPPED, OR DAMAGED IN ANY MANNER. RETURN APPLIANCE TO THE NEAREST AUTHORIZED SERVICE FACILITY FOR EXAMINATION, REPAIR OR ELECTRICAL OR MECHANICAL ADJUSTMENT.
- UNIT SHOULD BE TURNED OFF WHEN NOT IN USE OR DURING CLEANING. FAN HAS TO COME TO A COMPLETE STOP BEFORE HANDLING IT.


THE LEDs ARE NON REPLACEABLE.

FOR INDOOR USE ONLY


FCC STATEMENT

This device complies with part 15 of the FCC Rules. Operation is subject to the following two conditions: (1) This device may not cause harmful interference, and (2) this device must accept any interference received, including interference that may cause undesired operation.

WARNING: Changes or modifications to this unit not expressly approved by the party responsible for compliance could void the user’s authority to operate the equipment.

**WARNING**

- **INGESTIONS HAZARD:** This product contains a button cell or coin battery.
- **DEATH** or serious injury can occur if ingested.
- A swallowed button cell or coin battery can cause **Internal Chemical Burns** in as little as **2 hours**.
- **KEEP** new and used batteries **OUT OF REACH OF CHILDREN**.
- **Seek immediate medical attention** if a battery is suspected to be swallowed or inserted inside any part of the body.



- Remove and immediately recycle or dispose of used batteries according to local regulations and keep away from children. Do NOT dispose of batteries in household trash or incinerate.
- Even used batteries may cause severe injury or death.
- Call a local poison control center for treatment information.
- Battery type: CR2025
- Battery voltage: 3V
- Non-rechargeable batteries are not to be recharged.
- Do not force discharge, recharge, disassemble, heat above 104°F (40°C) or incinerate. Doing so may result in injury due to venting, leakage or explosion resulting in chemical burns.
- Ensure the batteries are installed correctly according to polarity (+ and -).
- Do not mix old and new batteries, different brands or types of batteries, such as alkaline, carbon-zinc, or rechargeable batteries.
- Remove and immediately recycle or dispose of batteries from equipment not used for an extended period of time according to local regulations.
- Always completely secure the battery compartment. If the battery compartment does not close securely, stop using the product, remove the batteries, and keep them away from children.