

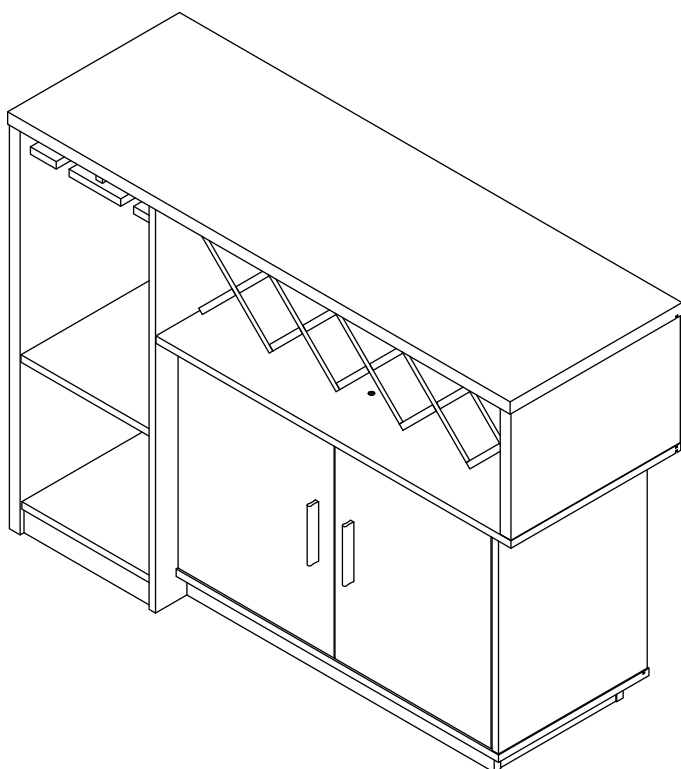
ASSEMBLY INSTRUCTIONS

TOOLS REQUIRED



**Phillips
Screwdriver**

(Not Included)



**2 - People
Recommended**

ASSEMBLY RATING



EASY —————> DIFFICULT

The Assembly Rating is a 5-point system showing the level of effort needed to assemble a specific product.



CHECK BEFORE STARTING

☐

Are you missing anything?

Double-check all parts, hardware and accessories listed on Page 6 are accounted for.

☐

Check out our Quick Tips!

We recommend reviewing the pre-assembly handouts. Even experts need a refresher now and then!

☐

Should we send any replacements?

Are there any irregularities or flaws in the parts? We can send replacements!

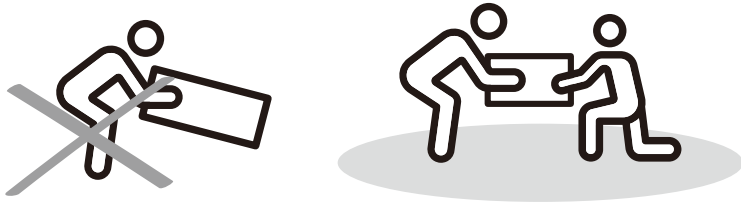
☐

Prep Time!

Please review the assembly instructions and all diagrams prior to assembling. Arrange parts as recommended on Page 7 and group identical hardware together to make assembling easier.

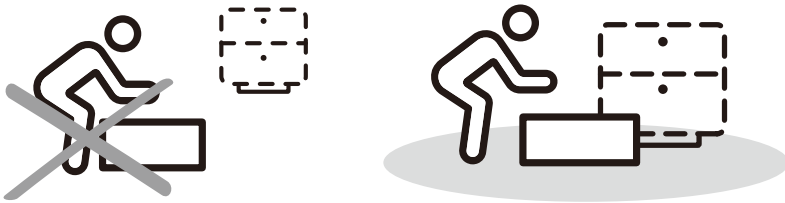
PRE ASSEMBLY INTRODUCTION

We understand building ready-to-assemble furniture can be a challenging experience for some. To help avoid confusion, we have provided some helpful tips that may speed up the process.



Teamwork

ALWAYS have at least two people to help with transporting and assembling the product to avoid potential injury and/or damage.



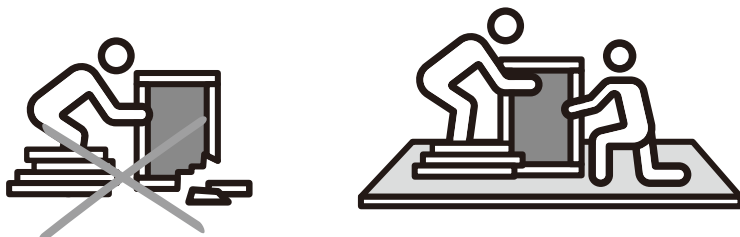
Suitable Location

Assembling near the area of the intended location is highly recommended.



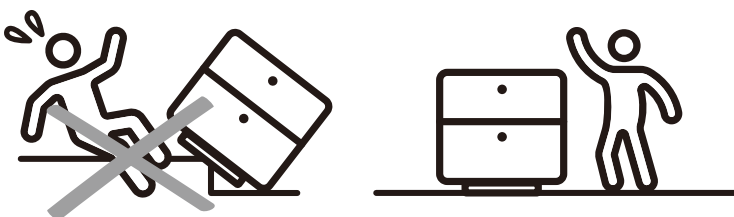
Sufficient Space

Make sure you have enough space to move around during the assembly.



Avoid Scratches

Use cardboard, blankets or a carpeted area while assembling furniture to prevent scratches.



Flat Surface

Make sure the furniture rests on a flat and level surface with each leg evenly touching the floor.

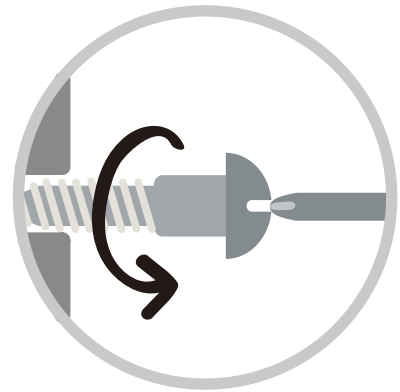
ASSEMBLY AND CARE ADVICE



**FAILURE TO FOLLOW THE GUIDELINES BELOW MAY
RESULT IN INJURY AND/OR PROPERTY DAMAGE.**



Position each part correctly
and insert screws or bolts into
their respective holes.

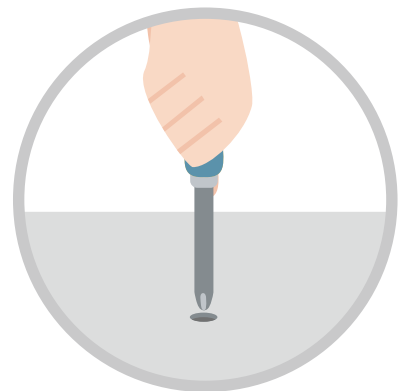


Turn clockwise to tighten and
only tighten when step is
completed or when instructed
to do so.



Save the instructions and store
any supplied tools for later
maintenance.

Use the appropriate hand tools
or power tools for assembly.
Select steps, such as tightening
screws and/or bolts, may require
hand tools to avoid causing
damage during assembly.



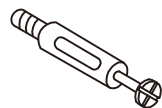
After two weeks, check and
tighten any loose hardware and
repeat again every six months
thereafter.

IT IS THE USER'S RESPONSIBILITY TO MAINTAIN THE FURNITURE. THE HARDWARE MAY LOOSEN OVER TIME AND MAY CAUSE THE FURNITURE TO BE WOBBLY AND UNABLE TO SUPPORT ITS INTENDED WEIGHT CAPACITY. THIS MAY LEAD TO COLLAPSE AND MAY CAUSE SERIOUS INJURY.

CAM LOCK FASTENER ASSEMBLY INSTRUCTIONS

Note :

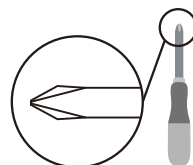
Every cam lock bolt must have a cam lock connector in order to fasten the parts together.



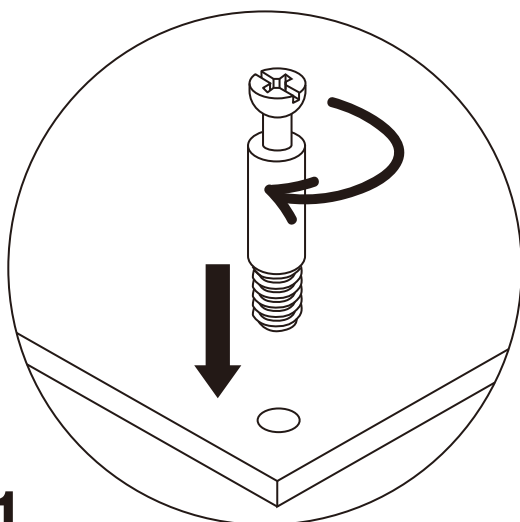
cam bolt



cam lock

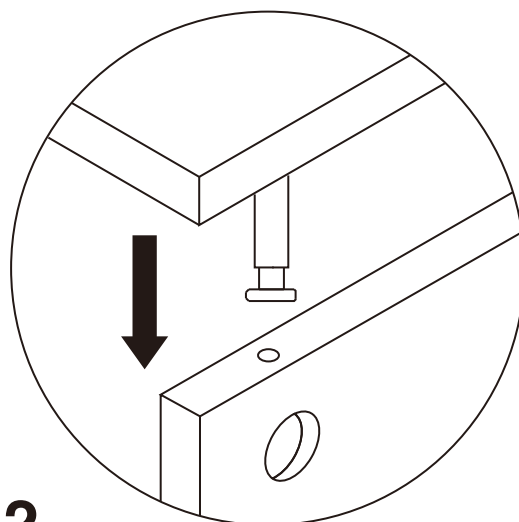


screwdriver



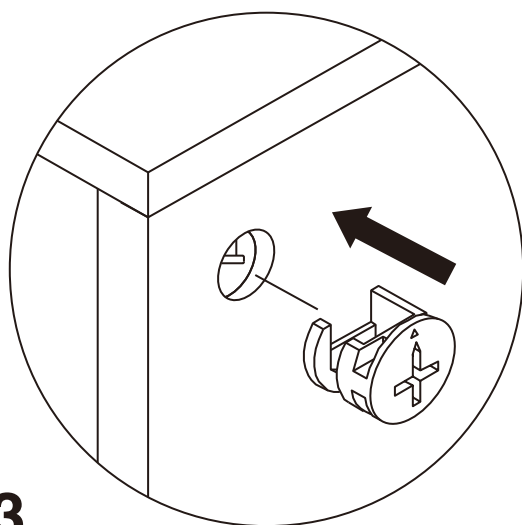
1

Screw the cam bolt into panel.



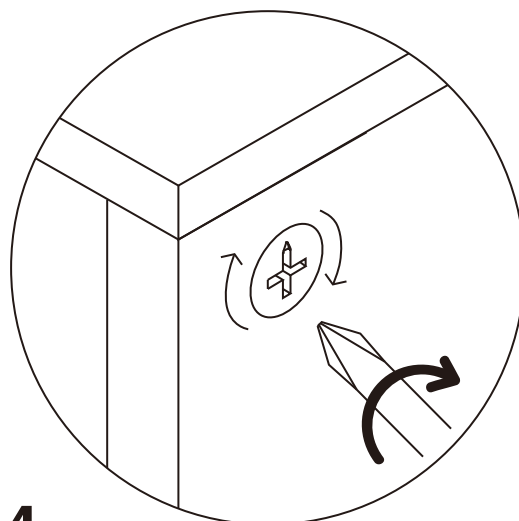
2

Insert the cam bolt into the bolt hole of joint panel.



3

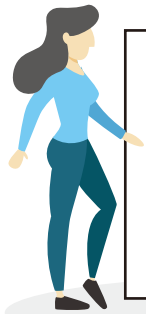
Align the cam lock with its side opening (or arrow) pointing to cam bolt.



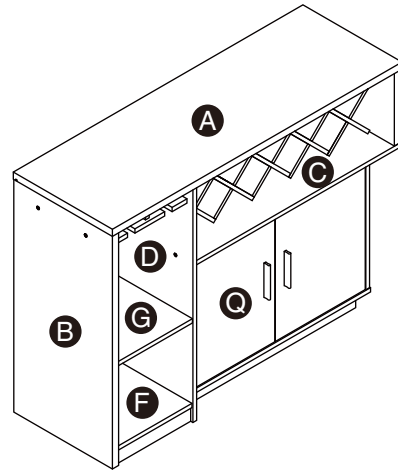
4

Turn the cam lock clockwise gently until it will not turn any more.

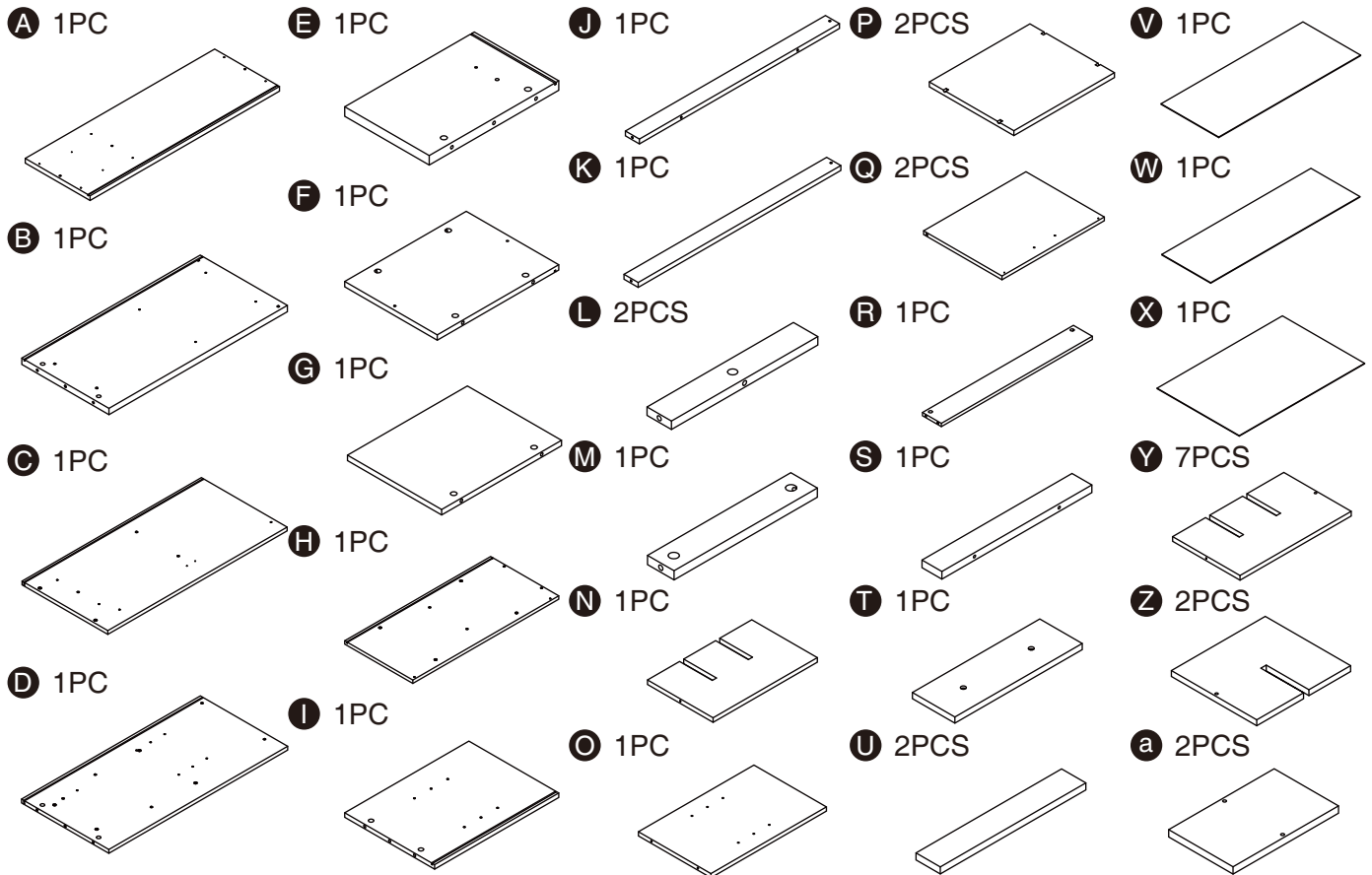
BUFFET CABINET



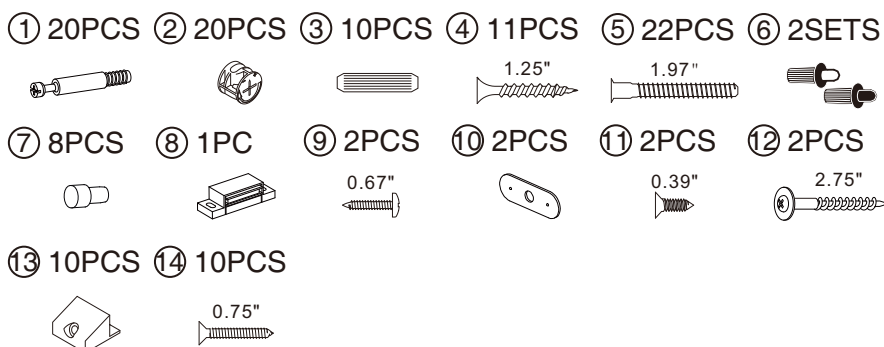
- Please keep instructions for future reference.
- Check the quantity and irregularity of parts and hardware before you start.



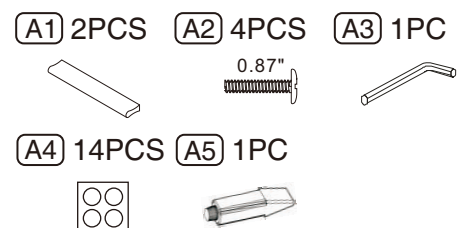
PARTS



HARDWARE

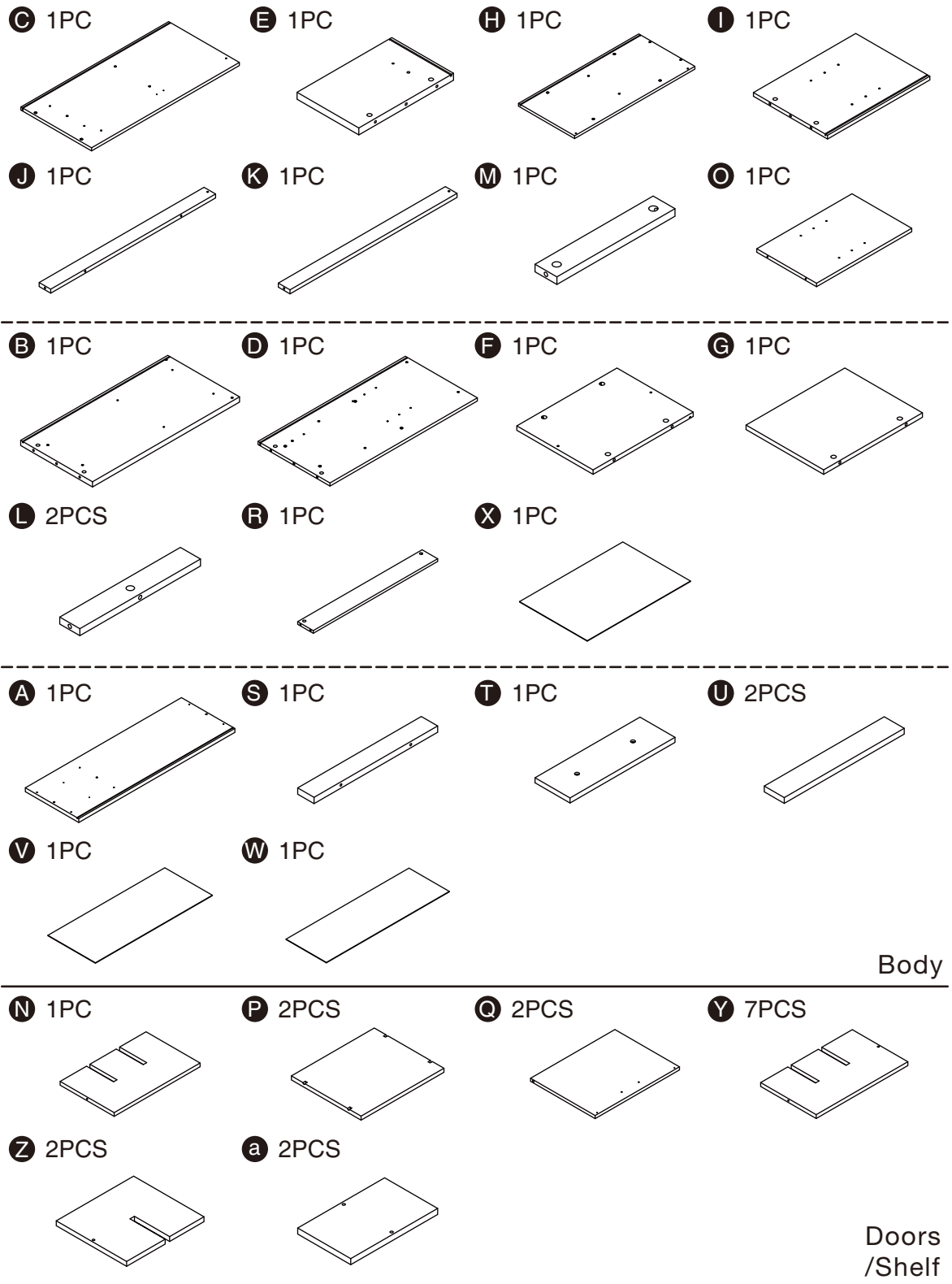


ACCESSORIES



GET READY

Please group boards as below.



ASSEMBLY INSTRUCTIONS

1

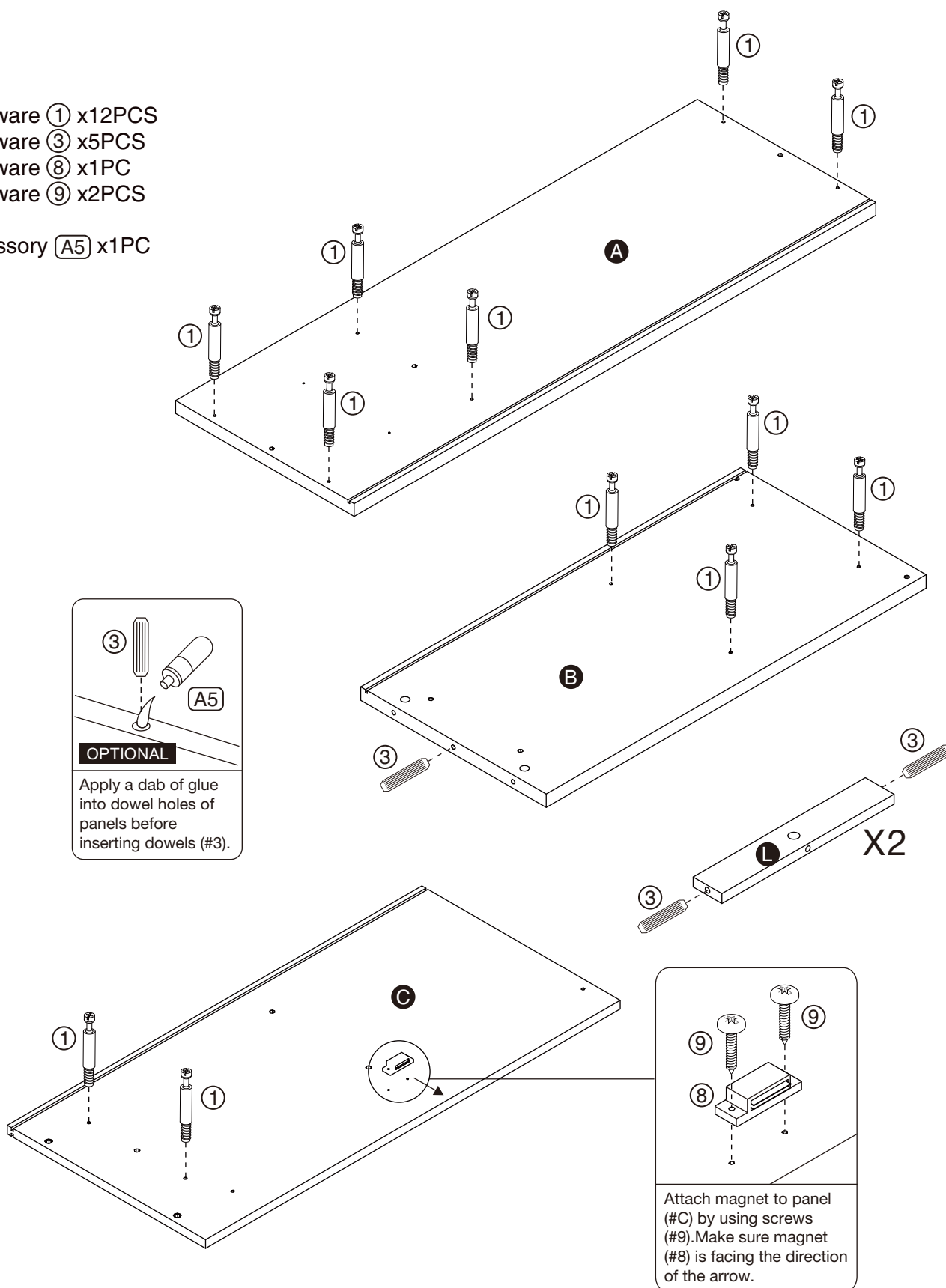
Hardware ① x12PCS

Hardware ③ x5PCS

Hardware ⑧ x1PC

Hardware ⑨ x2PCS

Accessory A5 x1PC



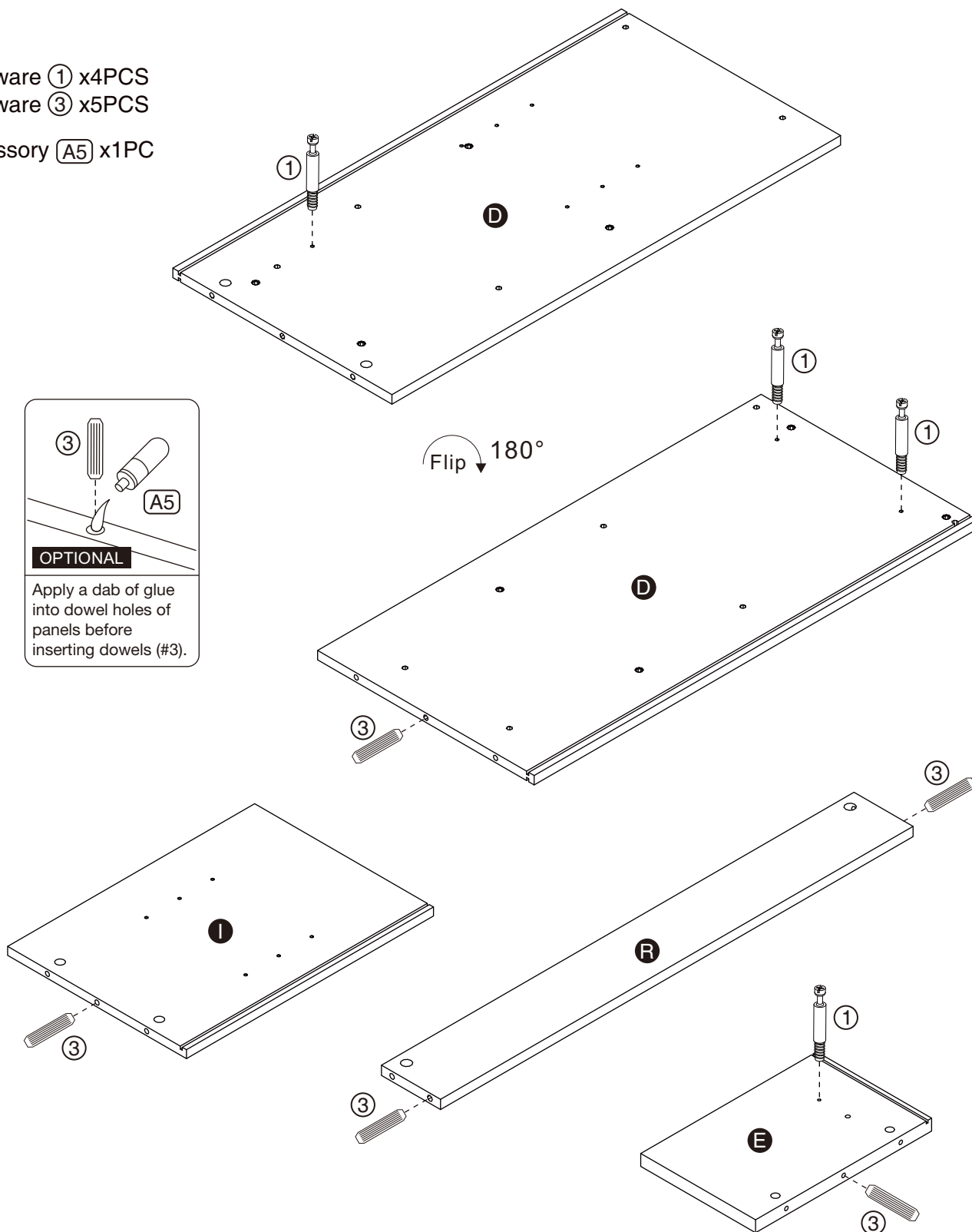
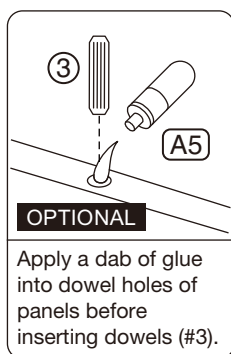
ASSEMBLY INSTRUCTIONS

2

Hardware ① x4PCS

Hardware ③ x5PCS

Accessory A5 x1PC

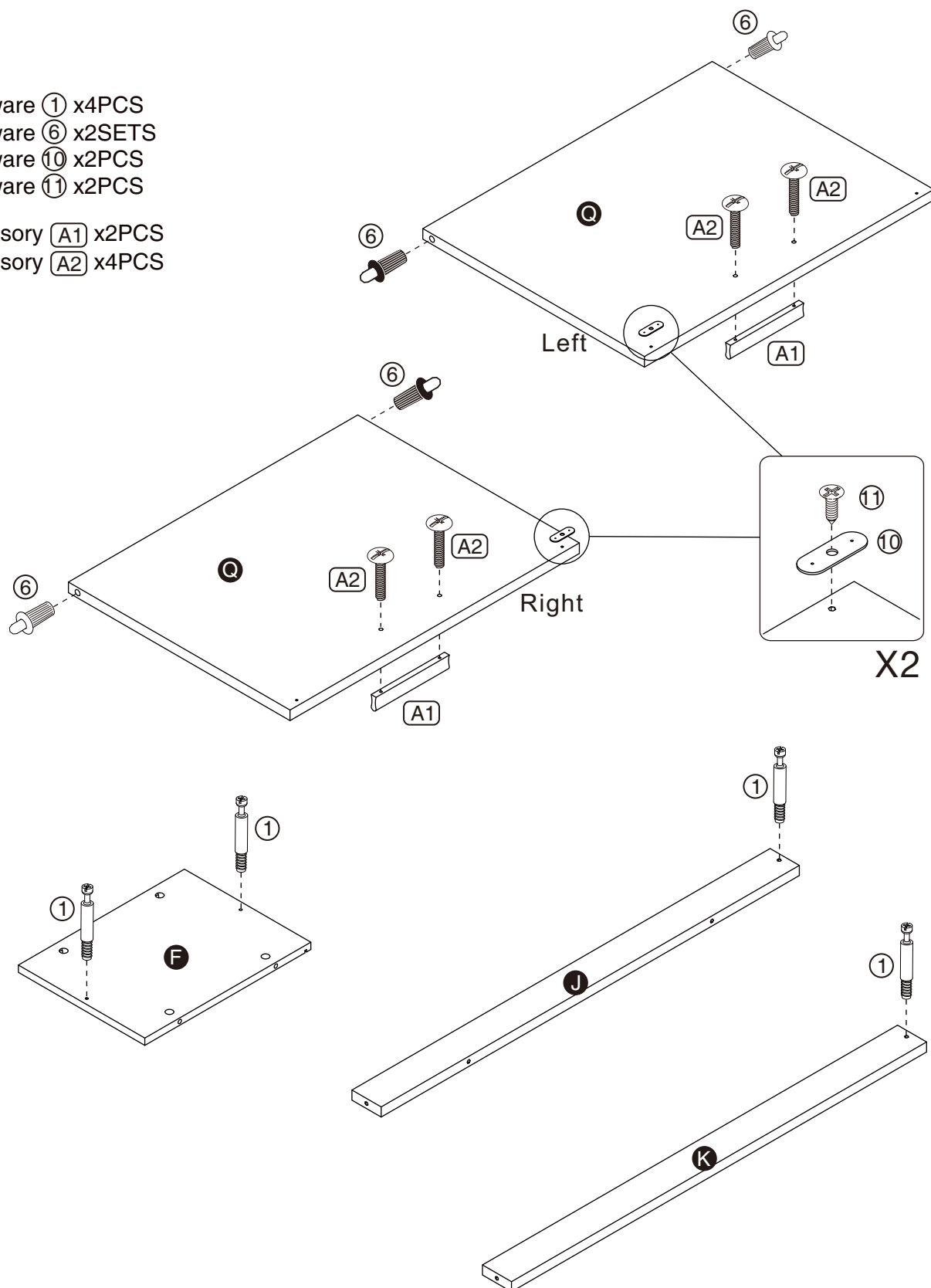


ASSEMBLY INSTRUCTIONS

3

Hardware ① x4PCS
Hardware ⑥ x2SETS
Hardware ⑩ x2PCS
Hardware ⑪ x2PCS

Accessory A1 x2PCS
Accessory A2 x4PCS



ASSEMBLY INSTRUCTIONS

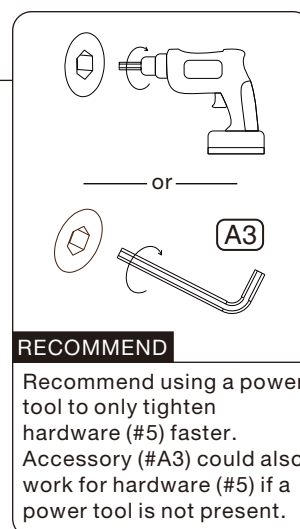
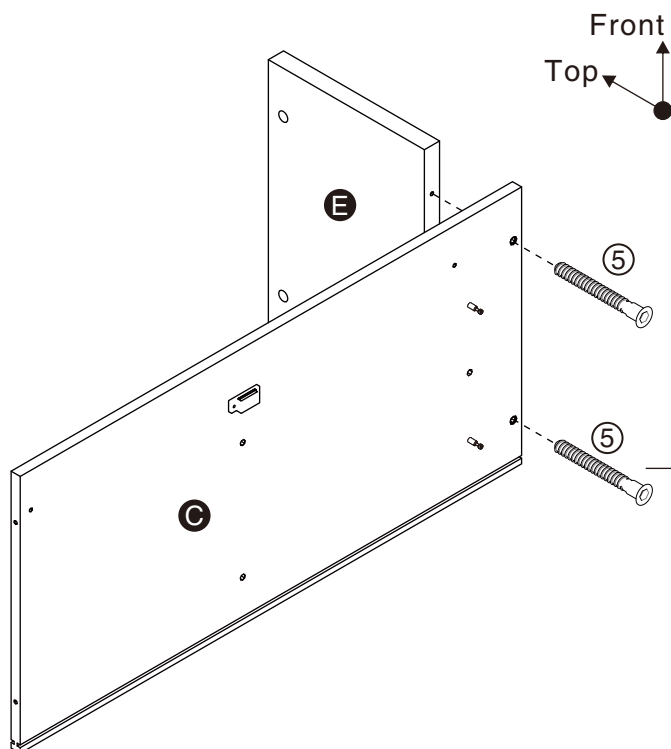
4

Part **C** x1PC

Part **E** x1PC

Hardware **5** x2PCS

Accessory **A3** x1PC



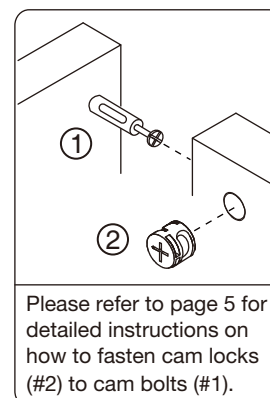
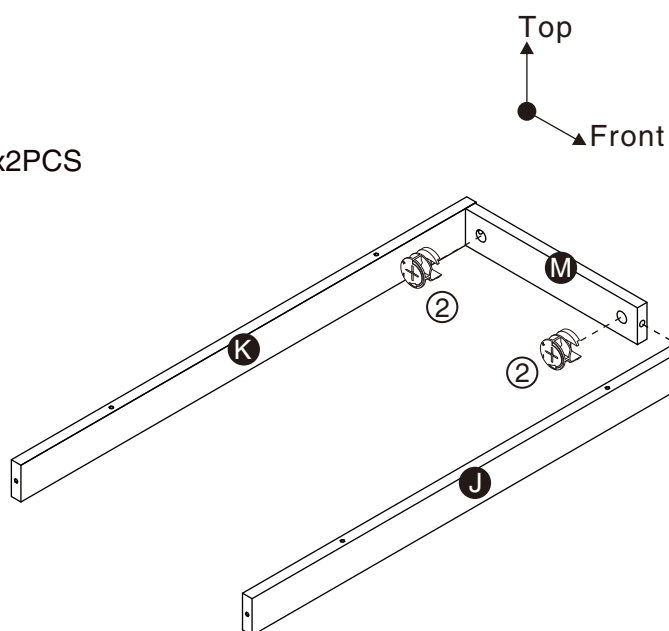
5

Part **J** x1PC

Part **K** x1PC

Part **M** x1PC

Hardware **2** x2PCS



ASSEMBLY INSTRUCTIONS

6

Part **H** x1PC

Part **I** x1PC

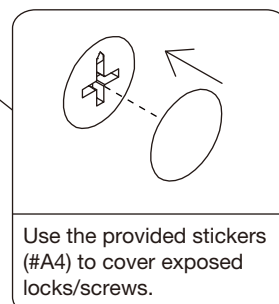
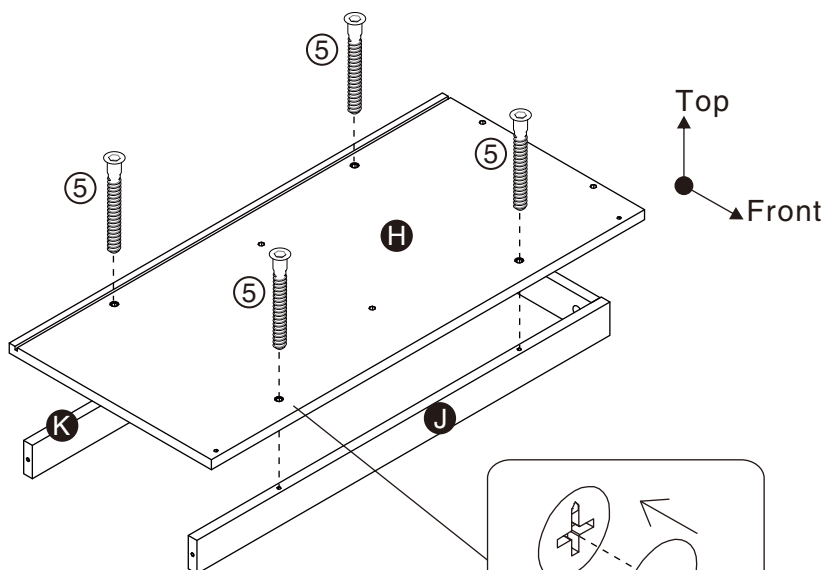
Part **O** x1PC

Hardware **②** x2PCS

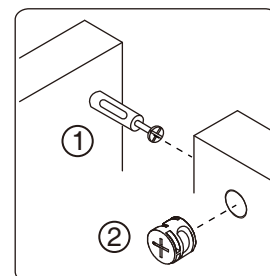
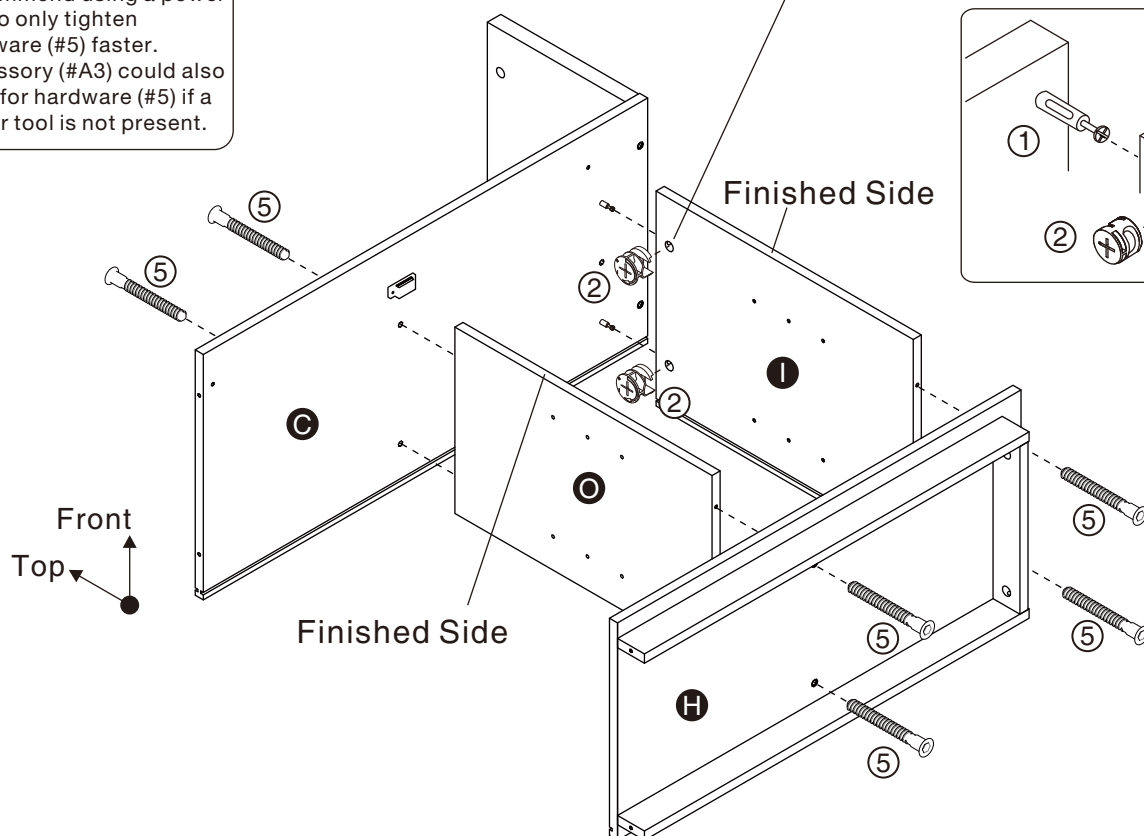
Hardware **⑤** x10PCS

Accessory **A3** x1PC

Accessory **A4** x6PCS



X6



ASSEMBLY INSTRUCTIONS

7

Part **D** x1PC

Part **R** x1PC

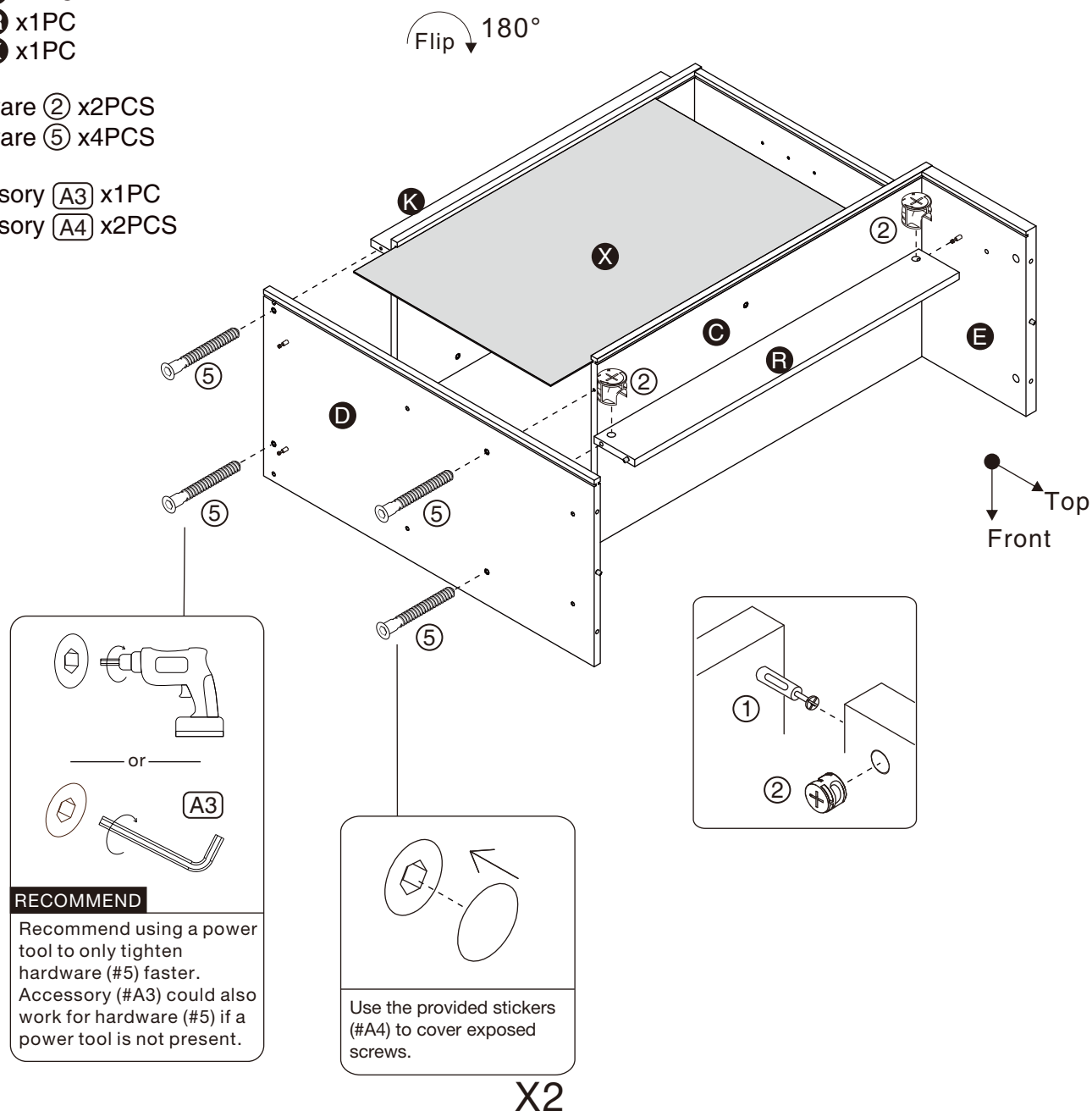
Part **X** x1PC

Hardware **②** x2PCS

Hardware **⑤** x4PCS

Accessory **A3** x1PC

Accessory **A4** x2PCS



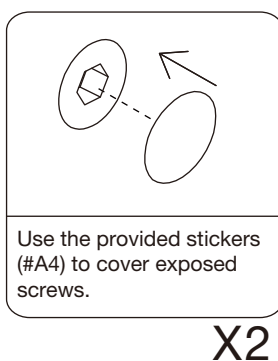
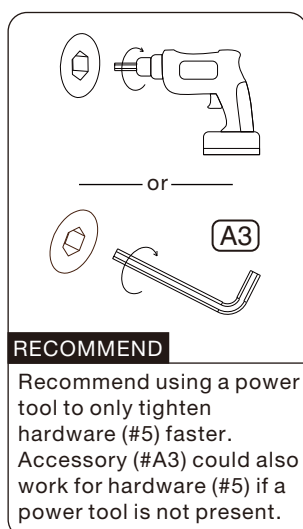
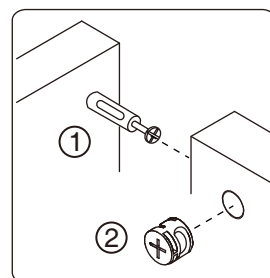
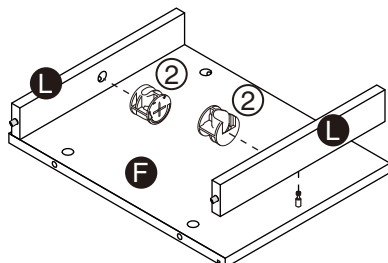
ASSEMBLY INSTRUCTIONS

8

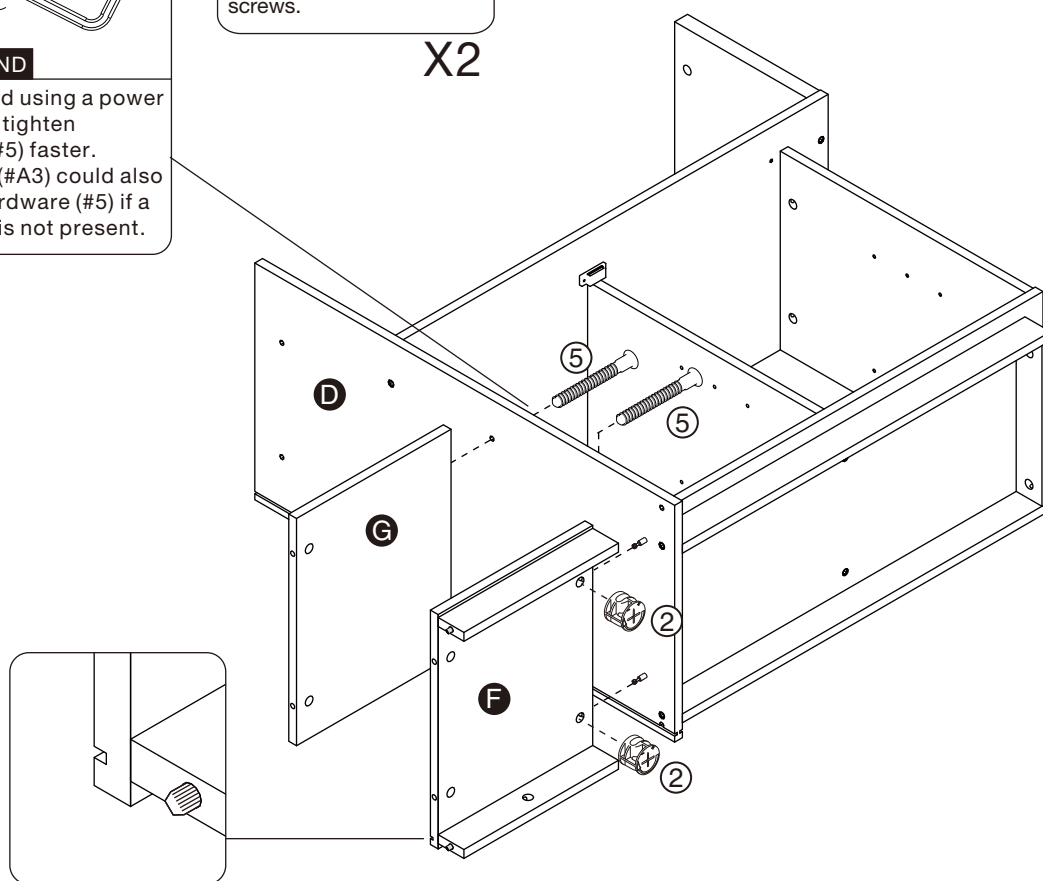
Part **F** x1PC
 Part **G** x1PC
 Part **L** x2PCS

Hardware **②** x4PCS
 Hardware **⑤** x2PCS

Accessory **A3** x1PC
 Accessory **A4** x2PCS



Front
 Top



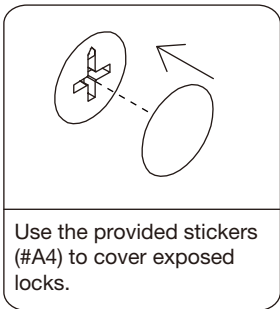
ASSEMBLY INSTRUCTIONS

9

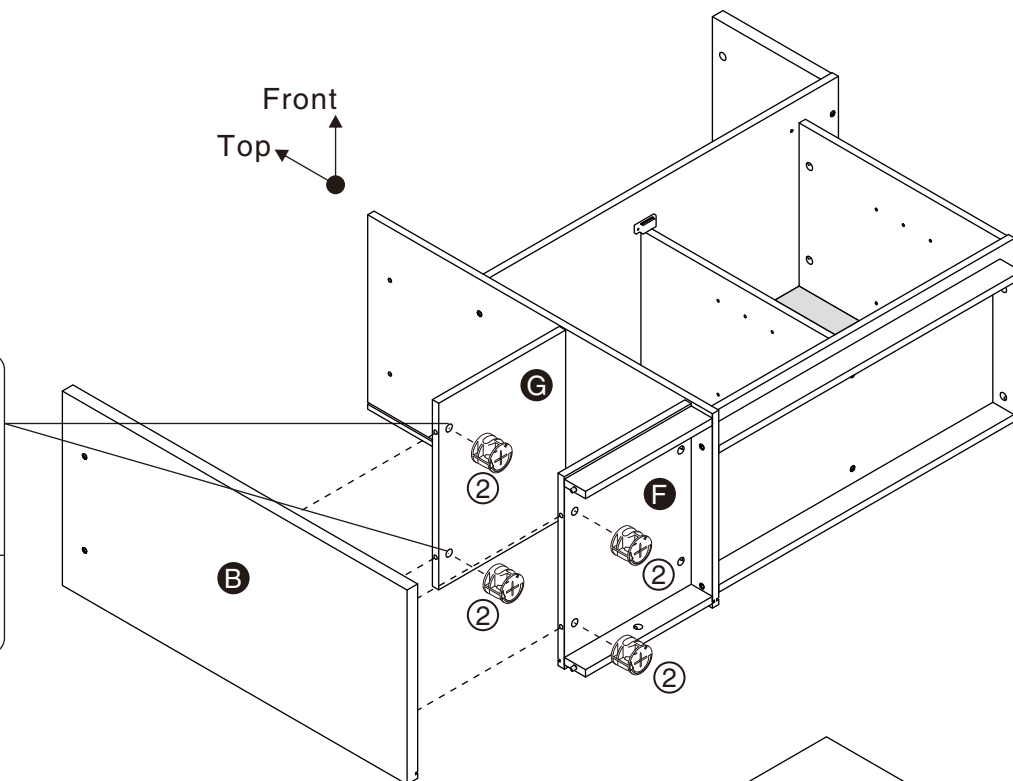
Part B x1PC

Hardware ② x4PCS

Accessory **A4** x2PCS



X2



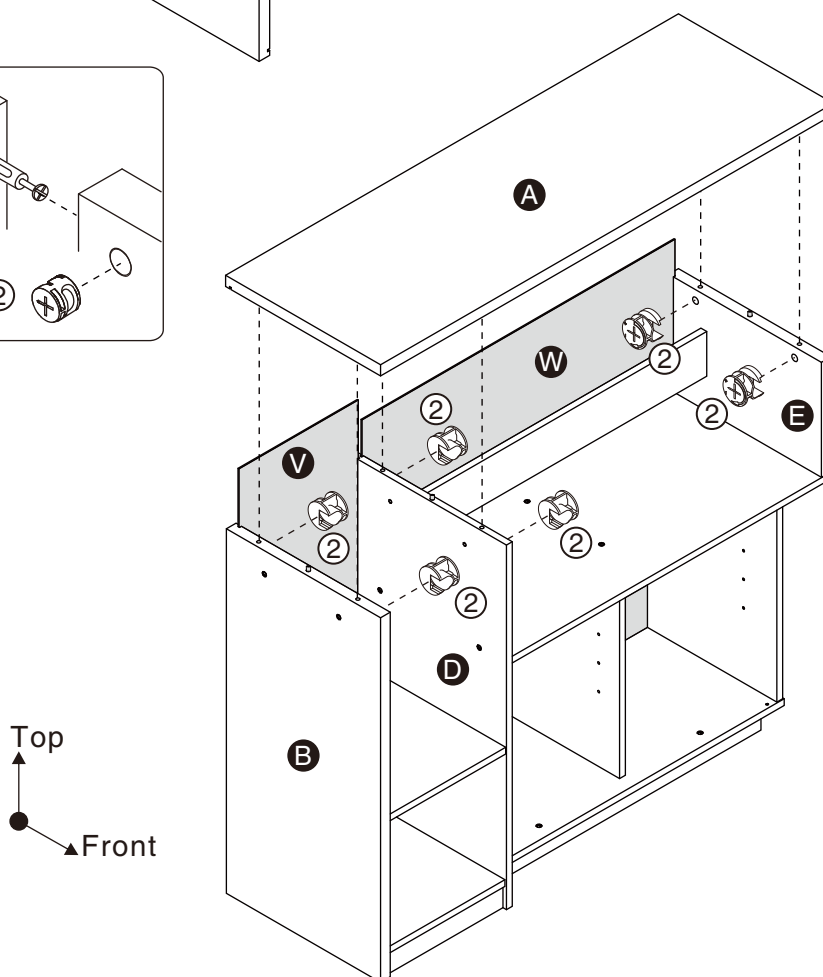
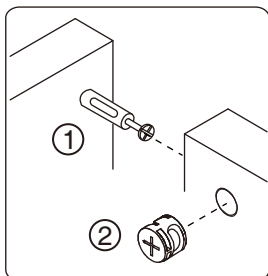
10

Part A x1PC

Part V x1PC

Part W x1PC

Hardware ② x6PCS



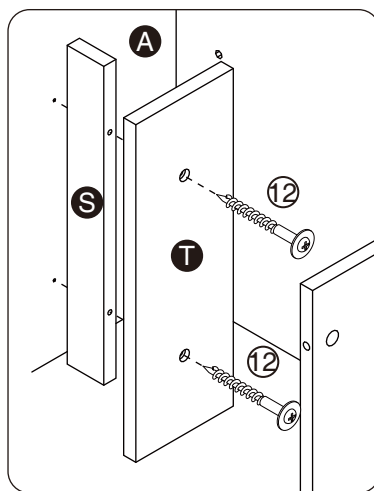
ASSEMBLY INSTRUCTIONS

11

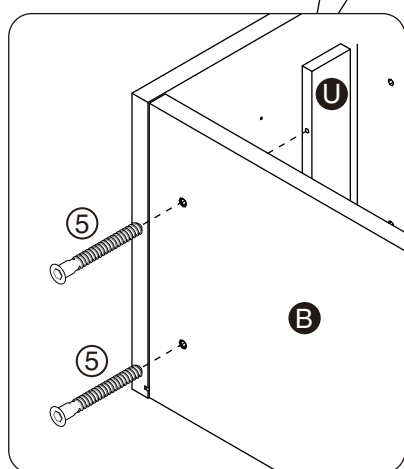
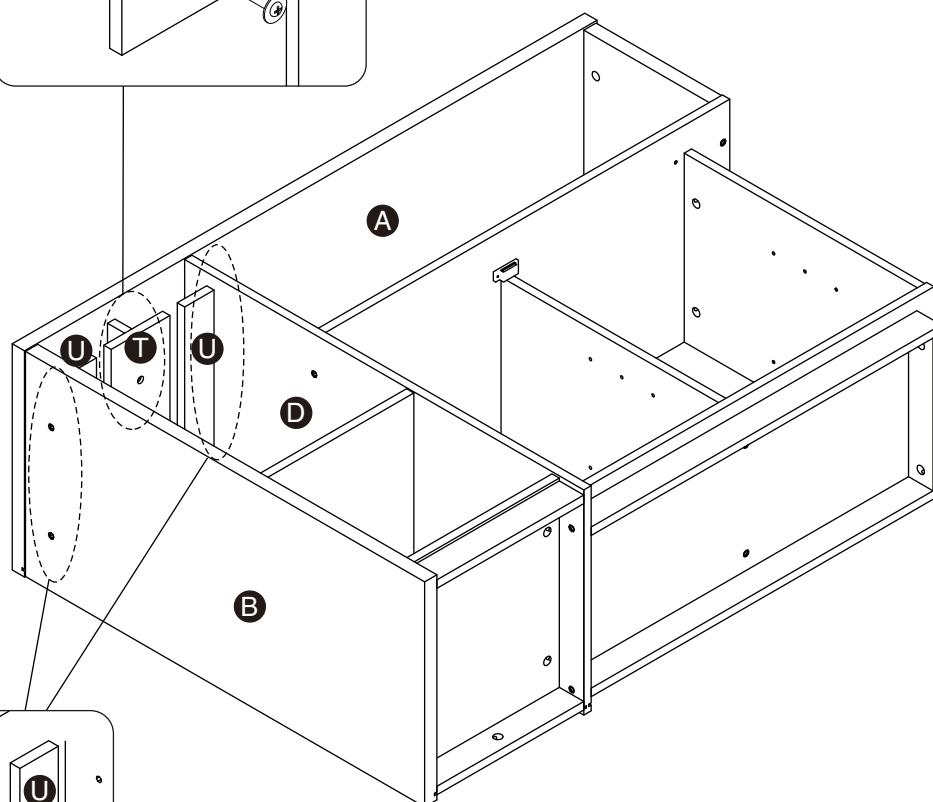
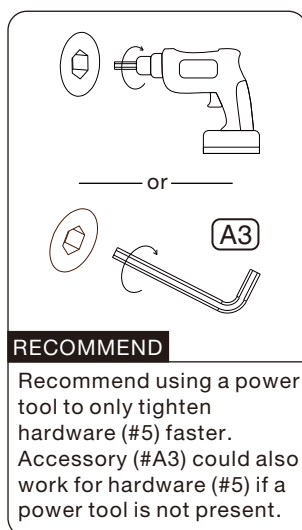
Part **S** x1PC
Part **T** x1PC
Part **U** x2PCS

Hardware **5** x4PCS
Hardware **12** x2PCS

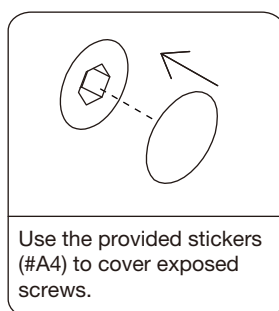
Accessory **A3** x1PC
Accessory **A4** x2PCS



Front
Top



X2



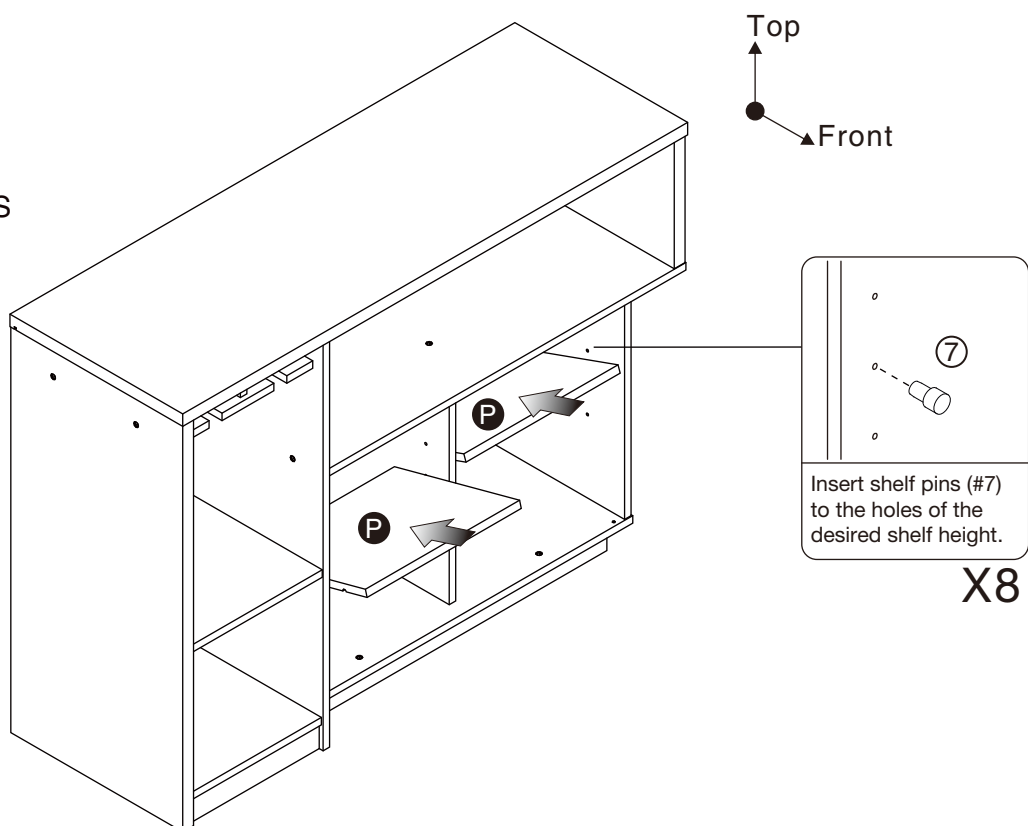
X2

ASSEMBLY INSTRUCTIONS

12

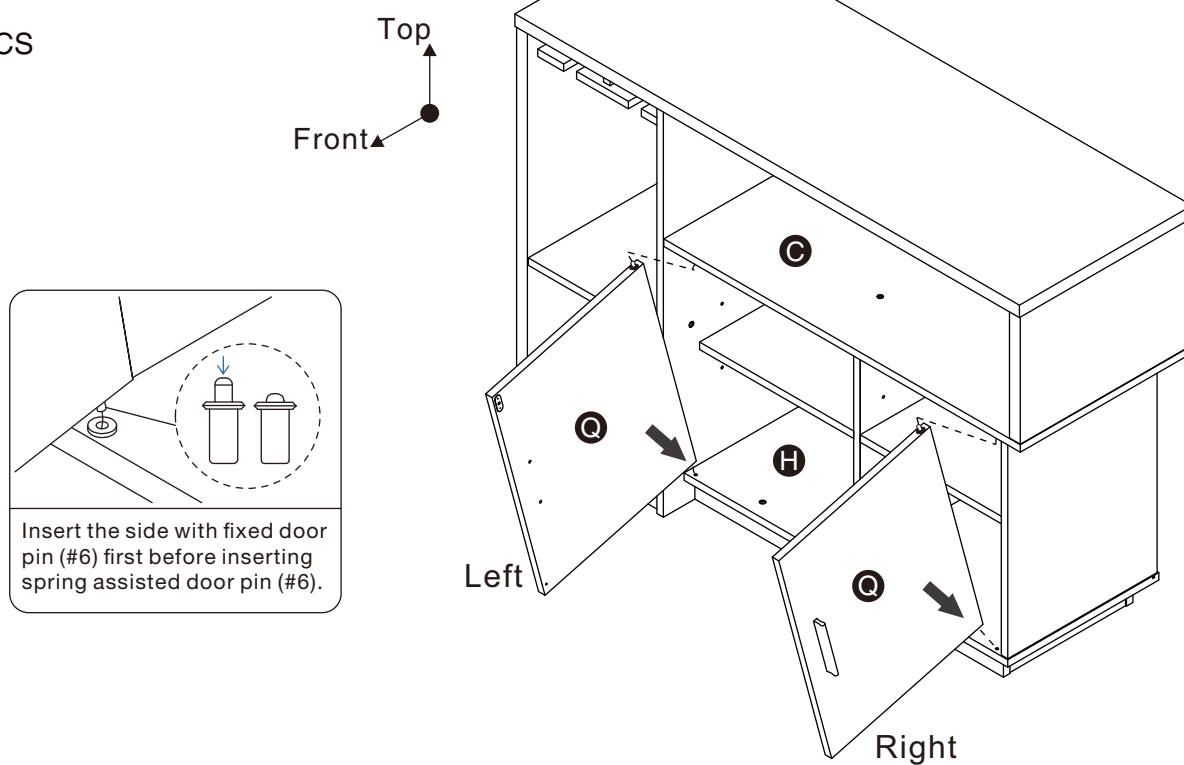
Part **P** x2PCS

Hardware **7** x8PCS



13

Part **Q** x2PCS

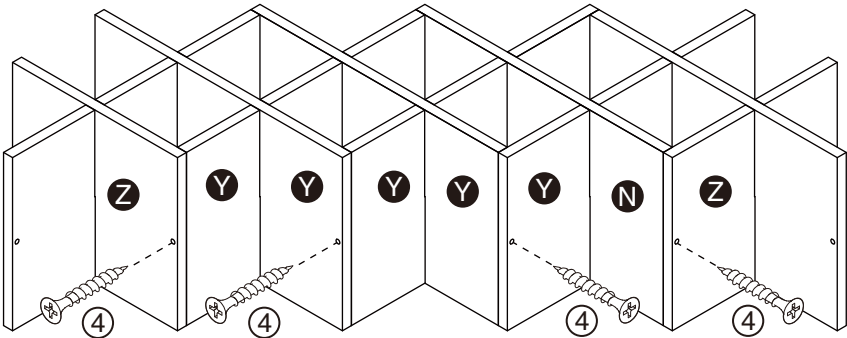
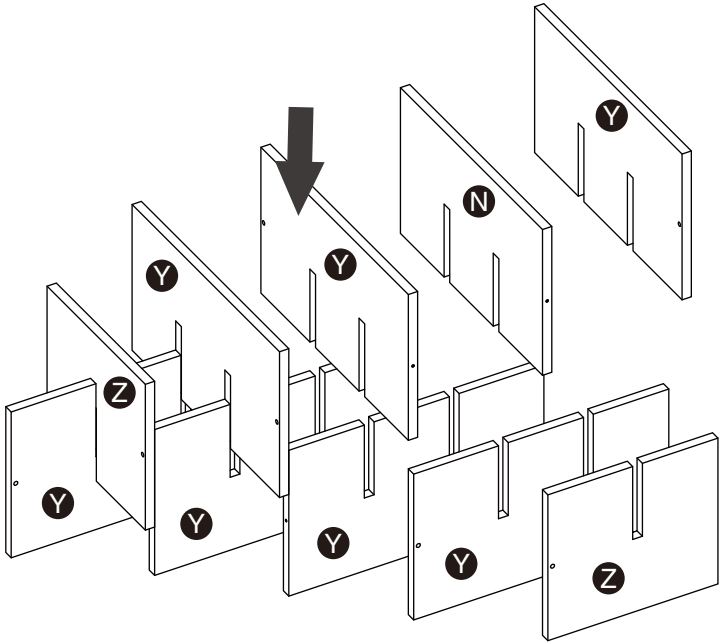


ASSEMBLY INSTRUCTIONS

14

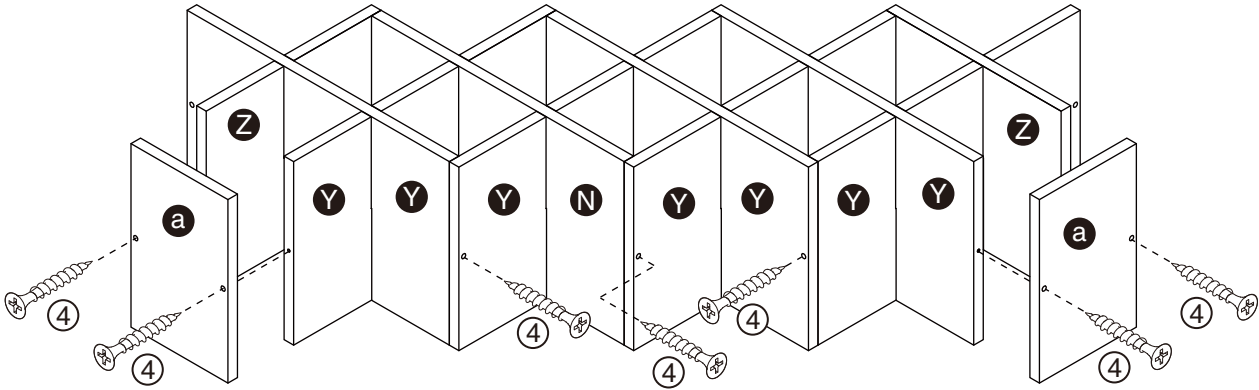
- Part **N** x1PC
- Part **Y** x7PCS
- Part **Z** x2PCS
- Part **a** x2PCS

Hardware **4** x11PCS



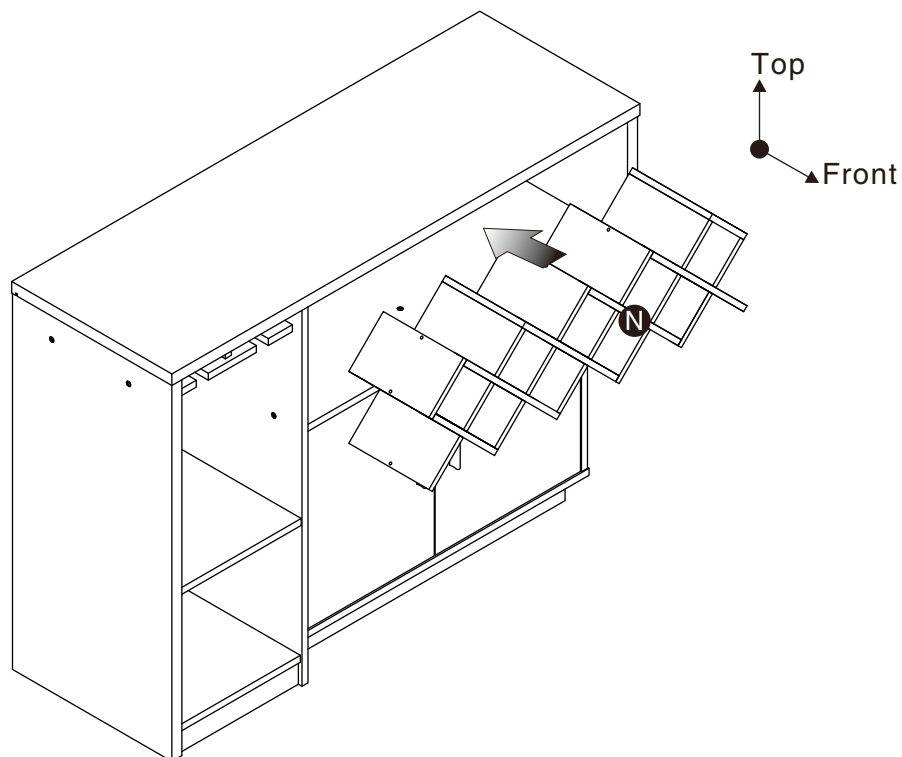
Flip
180°

Top
Front



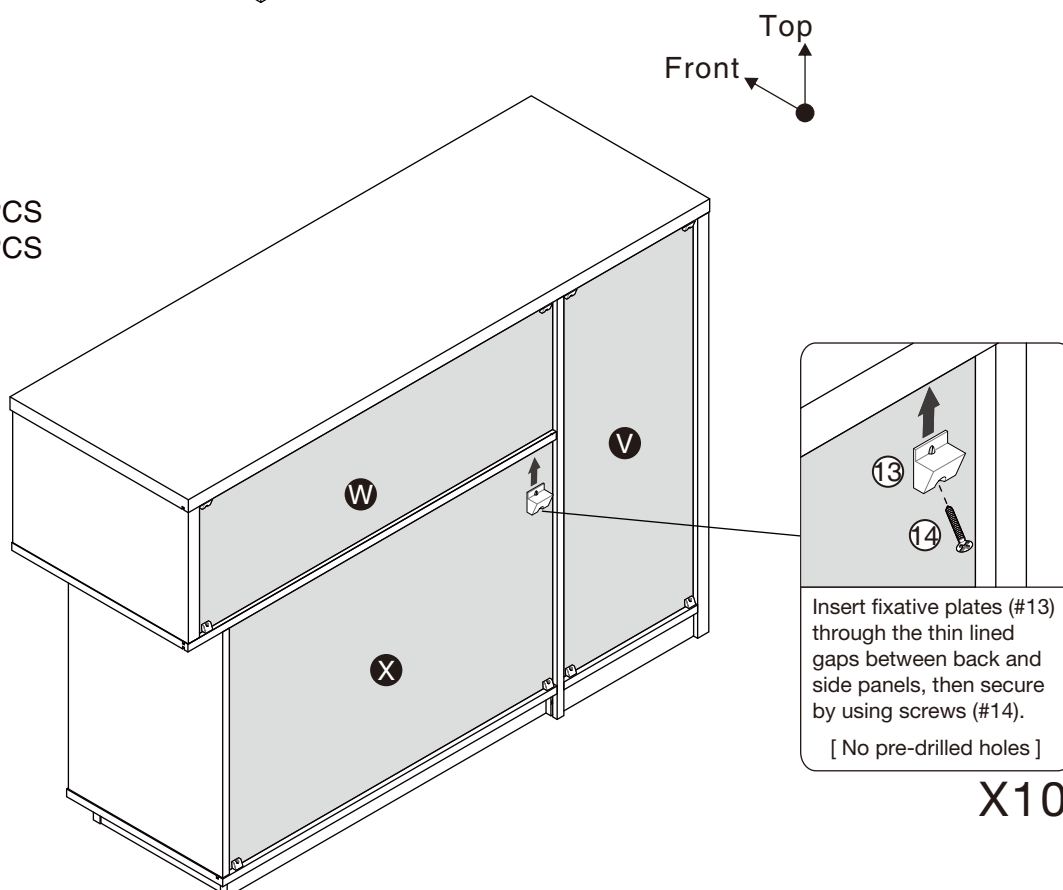
ASSEMBLY INSTRUCTIONS

15



16

Hardware ⑬ x10PCS
Hardware ⑭ x10PCS



ASSEMBLY INSTRUCTIONS

17

ASSEMBLY COMPLETED



Please ensure the furniture rests on an even and flat surface. If the product wobbles or feels loose, double-check all bolts and/or screws are properly tightened and secured.



Keep this handy!

Please retain this instruction manual and any order-related information for future reference.



Lift, don't drag!

To avoid damage to product please always LIFT the product when transporting or adjusting the placement.

