

Cast Iron Two Finger Closet Flange

Specifications

- Flush fit
- Redesigned to fit oblong horns
- Pushes easily into cast iron or Schedule 40 DWV pipe
- No tear out or caulking required
- ASTM C-564 rubber gasket

Applications

- Non-Potable water

Materials

- Cast Iron

Dimensions and Product Offering

Part Code	Size	A	ØB	C	ØD	ØE	ØF	ØG	ØH	I
C47320*	3" x 2"	2+.13-0"	4.19±.13"	0.5"	2.86±.13"	2.16"	7.25±.13"	0.32"	6.25±.13"	.38+0-.03"
C47340**	3" x 4"	4+.13-0"	4.14±.13"	0.5"	2.77±.13"	2.06"	7.25±.13"	0.32"	6.25±.13"	.38+0-.03"
C47420*	4" x 2"	2+.13-0"	4.07±.13"	0.5"	3.69±.13"	2.88"	7.25±.13"	0.32"	6.25±.13"	.38+0-.03"
C47430*	4" x 3"	3+.13-0"	4.13±.13"	0.5"	3.69±.13"	2.88"	7.25±.13"	0.32"	6.25±.13"	.38+0-.03"
C47440**	4" x 4"	4+.13-0"	4.15±.13"	0.5"	3.69±.13"	2.90"	7.25±.13"	0.32"	6.25±.13"	.38+0-.03"
C47460**	4" x 6"	6+.13-0"	4.27±.13"	0.5"	3.69±.13"	2.90"	7.25±.13"	0.32"	6.25±.13"	.38+0-.03"

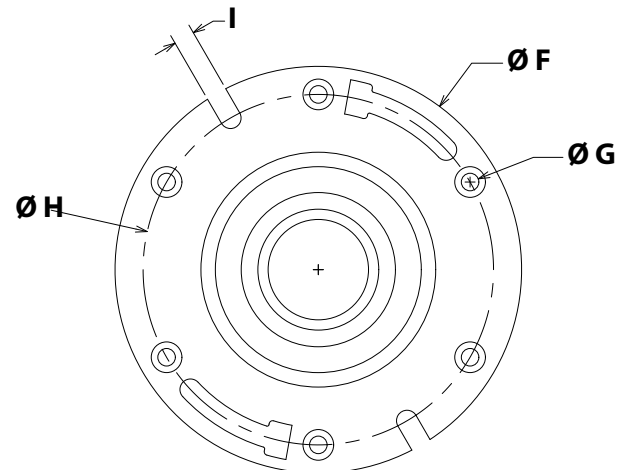
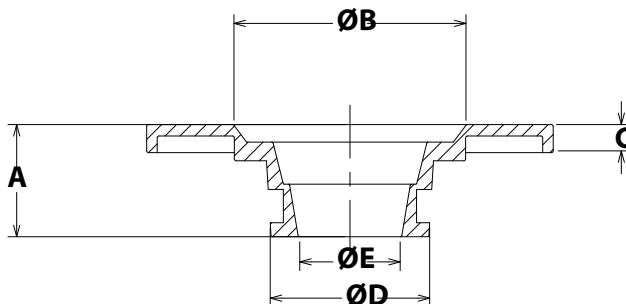
Certifications/Listings/Approvals

- IAMPO listed
- MASS approved



*3" x 2," 4" x 2," and 4" x 3":
for areas with the bend
close to the flange

**3" x 4," 4" x 4" and 4" x 6": for areas
without the bend close to the flange
or for broken pipe



Job Name	_____
Location	_____
Engineer	_____
Contractor	_____
Tag	_____ PO# _____

