



**Stay fresh, Stay cool**  
[calefort.com](http://calefort.com)

**Ca'Lefort**

Ca'Lefort Freestanding  
wine cooler



# Stay fresh, Stay cool

## Who are we?

Welcome to Ca'Lefort, where we bring you the finest collection of high-end wine and beverage coolers.

At Ca'Lefort, we are not just selling products; we are creating a lifestyle. Our journey began with a passionate pursuit of the good life. We believe that every moment deserves to be savored in the best way possible. Every detail of our fridges is meticulously crafted to provide an exquisite storage and cooling experience.

"Stay Fresh, Stay Cool" is our philosophy, embodying our core values. It encapsulates our promise to offer optimal storage solutions, ensuring your drinks remain fresh and cool. Ca'Lefort has been dedicated to innovative and unique design and research, aiming to bring you a fresh and cool life and experience. Whether you're celebrating special moments or enjoying everyday life, Ca'Lefort will be your perfect companion, adding a touch of sophistication to your lifestyle. Experience Ca'Lefort, where impeccable design, unrivaled quality, and the pursuit of perfection come together to define a brand that is truly extraordinary.



[facebook.com/calefort.official](https://facebook.com/calefort.official)



[twitter.com/calefortmarket](https://twitter.com/calefortmarket)



[youtube.com/@calefortmarketing](https://youtube.com/@calefortmarketing)



[pinterest.com/mycalefort/](https://pinterest.com/mycalefort/)



[instagram.com/clf.marketing/](https://instagram.com/clf.marketing/)

# Product



**CLF-WSJC46**



**CLF-WSJC62**



**CLF-WSJC88**



**CLF-WSJC95**



**CLF-WSJC130**

## Significant Feature

### Modern Electric Wine Cooler

The glass front door with a stainless steel frame for you to view your wine, beer or soda at a glance. Its blue LED interior light illuminates for easy, nighttime selection of your favorite chilled drink, decorates your kitchen, living room, office or bar area.

### Small Size , Large Storage Capacity

Enjoy this wine refrigerator with plenty of space to store all your favorite drinks with movable shelves.

### Direct Cooling System Wine Fridge

The cooler maintains temperatures between 38°F and 65°F, keeping both red and white wines at the suitably serving temperature, and you can customize what you need.

### Double Tempered Glass Door Wine Fridge

Double-layer tempered glass door improves temperature stability, reduces condensation, and keeps your drinks perfect with low electricity consumption.

# PRODUCT FEATURE



**CLF-WSJC46**

VOLTAGE:	110-120V
CURRENT:	1.3A
FREQUENCY:	60HZ
POWER CONSUMPTION:	85W
BOTTLE CAPACITY:	16 Bottles
STORAGE CAPACITY:	1.62 cu. ft.
TEMPERATURE RANGE:	38°F - 65°F
REFRIGERANT:	R600a (1.058 oz)



**CLF-WSJC62**

VOLTAGE:	110-120V
CURRENT:	1.3A
FREQUENCY:	60HZ
POWER CONSUMPTION:	85W
BOTTLE CAPACITY:	22 Bottles
STORAGE CAPACITY:	2.18 cu. ft.
TEMPERATURE RANGE:	38°F - 65°F
REFRIGERANT:	R600a (1.058 oz)



**CLF-WSJC88**

VOLTAGE:	110-120V
CURRENT:	1.3A
FREQUENCY:	60HZ
POWER CONSUMPTION:	85W
BOTTLE CAPACITY:	28 Bottles
STORAGE CAPACITY:	3.1 cu. ft.
TEMPERATURE RANGE:	38°F - 65°F
REFRIGERANT:	R600a (1.058 oz)



**CLF-WSJC95**

VOLTAGE:	110-120V
CURRENT:	1.3A
FREQUENCY:	60HZ
POWER CONSUMPTION:	85W
BOTTLE CAPACITY:	33 Bottles
STORAGE CAPACITY:	3.35 cu. ft.
TEMPERATURE RANGE:	38°F - 65°F
REFRIGERANT:	R600a (1.058 oz)



**CLF-WSJC130**

VOLTAGE:	110-120V
CURRENT:	1.3A
FREQUENCY:	60HZ
POWER CONSUMPTION:	85W
BOTTLE CAPACITY:	48 Bottles
STORAGE CAPACITY:	4.59 cu. ft.
TEMPERATURE RANGE:	38°F - 65°F
REFRIGERANT:	R600a (1.058 oz)

# TABLE OF CONTENTS

<b>SAFETY INFORMATION &amp; WARNINGS</b>	06
<b>PARTS LIST</b>	07
<b>ASSEMBLY &amp; INSTALLATION</b>	08
<b>PRODUCT SIZE</b>	09
<b>OPERATING YOUR WINE COOLER</b>	10
<b>INSTALLATION INSTRUCTIONS</b>	12
<b>CLEANING &amp; MAINTENANCE</b>	13
<b>TROUBLESHOOTING GUIDE</b>	14
<b>LIMITED MANUFACTURER'S WARRANTY</b>	15



# SAFETY INFORMATION & WARNINGS



When using any electrical appliance, basic safety precautions must be followed in order to reduce the risk of fire, electrical shock and/or injury to persons or property. Be sure to read all instructions before using this appliance and observe the following safety tips:

## ATTENTION: CHILD ENTRAPMENT RISK!

To prevent the risk of child entrapment, do not allow children to operate, play with, or crawl inside the unit. If the unit will not be used for an extended period of time, remove the door and leave the shelves in place so that children cannot crawl inside. Also remove the door when disposing of the unit.



## Shock Hazard –Electrical Grounding Required

- Never attempt to repair or perform maintenance on the unit until the electricity has been disconnected.
- Never remove the round grounding prong from the plug and never use a two-prong grounding adaptor.
- Altering or cutting of power cord, removal of power cord, removal of power plug, or direct wiring can cause serious injury, fire, loss of property and/or life, and will void the warranty.
- Never use an extension cord to connect power to the unit.
- Avoid operating this beverage cooler in excessively moist or humid environment



## Important Precautions:

- Do not lift unit by door handle.
- Never install or operate the unit behind closed doors.
- Failure to clean the condenser every six months can cause the unit to malfunction.
- Allow unit temperature to stabilize for 24 hours before use.
- Do not block any internal fans.
- Keep the wine cooler away from hazardous materials or combustible/flammable substances.
- Use only genuine supplier's replacement parts. Imitation parts can damage the unit, affect its operation or performance, and may void the warranty.

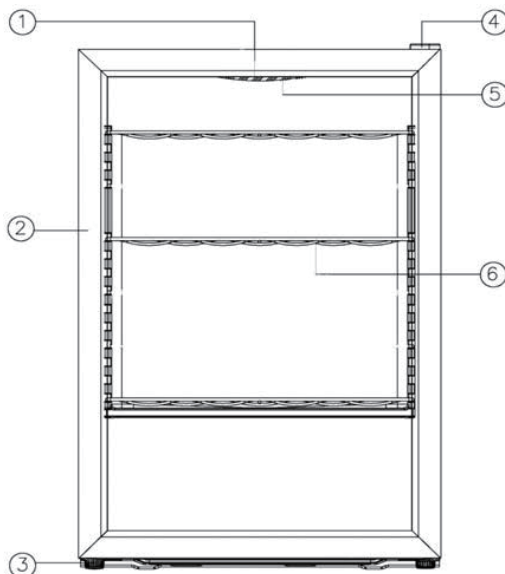


When you receive your unit, carefully remove the exterior and interior packaging. It is recommended that you retain the packaging for future use.

Check to make sure the following parts are included:

Removable Shelves  
Left Door Hinge & Screws  
L-Shaped Screwdriver  
User manual

## Parts Diagram



1. Mechanical temperature control panel

2. Stainless steel door

3. wine cooler foot

4. Door hinge

5. Interior LED light

6. Shelf

# ASSEMBLY & INSTALLATION



Before connecting the appliance to a power source, let it stand upright for approximately 2 hours. This will reduce the possibility of a malfunction in the cooling system from handling during transportation.

This wine cooler is a freestanding unit and should not be built in to surrounding cabinetry. Allow for proper air clearance around the cooler. The recommended clearances are as follows:

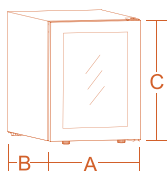
Sides:  $\frac{3}{4}$ " (19 mm) | Top: 4" (100 mm) | Back: 2" (50 mm)

## Before operating your beverage cooler for the first time, follow these steps:

---

1. Clean the interior surface of the unit with lukewarm water and a soft cloth.
2. Place the cooler on a level surface that will be strong enough to support the unit when it is fully loaded. To level your cooler, adjust the front feet located at the bottom of the unit.
3. Install the cooler away from direct sunlight and heat sources such as stoves, heaters, or radiators. Direct sunlight may affect the unit's acrylic coating, and nearby heat sources can increase electrical consumption. Extreme cold or hot ambient temperatures may also prevent proper performance.
4. Once the cooler is plugged in, let the beverage cooler run for at least 30 minutes. Do not change the temperature or adjust any settings at this time.

**CLF-WSJC46**

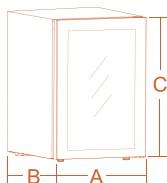


Overall Width (in.) A 16.9"

Overall Depth (in.) B 18.5"

Overall Height (in.) C 19.7"

**CLF-WSJC62**

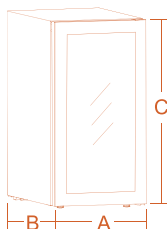


Overall Width (in.) A 16.9"

Overall Depth (in.) B 18.5"

Overall Height (in.) C 24.8"

**CLF-WSJC88**

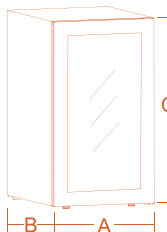


Overall Width (in.) A 16.9"

Overall Depth (in.) B 18.5"

Overall Height (in.) C 32.1"

**CLF-WSJC95**

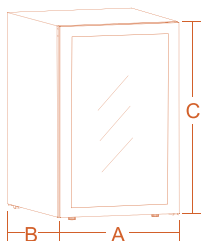


Overall Width (in.) A 18.9"

Overall Depth (in.) B 18.1"

Overall Height (in.) C 32.5"

**CLF-WSJC130**



Overall Width (in.) A 21.3"

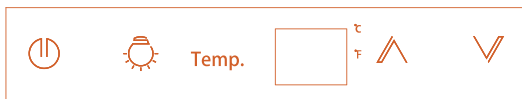
Overall Depth (in.) B 21.1"

Overall Height (in.) C 32.1"

# OPERATING YOUR WINE COOLER

It is recommended you install the wine cooler in a place where the ambient temperature is between 19°C-24°C (66°F-75°F). If the ambient temperature is above or below recommended temperatures, the performance of the unit may be affected. For example, placing your unit in extreme cold or hot conditions may cause interior temperatures to fluctuate. The range of 40°F-65 (5°C-18°C) cannot be reached.

## Control Panel



### ON/OFF:

Press and hold the ON / OFF control button for 5 seconds will shut down the appliance but still power on, only the on/off icon will light up.



### INSIDE LIGHTING:

The cooling zone has an interior light. Press once the light control button will switch between different colors and off, the light color switch cycle sequence is in white, blue, amber color and off.



**[+] BUTTON:** To increase the temperature by 1°C or 1°F



**[-] BUTTON:** To decrease the temperature by 1°C or 1°F

### Control panel:

5 minutes without any operation, all the touch keypad light will turn off and the temperature will display normally. Touch any keypad can light up the button indicating light.

## ★ NOTE

If the unit is unplugged, if the power is lost, or turned off, you must wait 3 to 5 minutes before restarting the unit. If you attempt to restart before this time delay, the wine cooler will not start.

When you use the wine cooler for the first time or restart the wine cooler after having been shut off for a long time, there could be a few degrees variance between the temperature you select and the one indicated on the LED readout. This is normal and it is due to the length of the activation time. Once the wine cooler is running for a few hours everything will be back to normal.

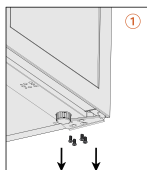
## Optimizing Performance

---

- To ensure maximum performance and efficiency, be sure to place your wine cooler in an area where there is proper air circulation. (See installation instructions above for proper clearances).
- For proper internal air circulation, do not overfill your wine cooler. When storing wine, keep them away from the rear wall. To allow free circulation of cold air, don't pack beverages too tightly on the shelves.
- Do not place the unit in direct sunlight.
- Do not place heated food in your cooler.
- Do not store perishable food in your wine cooler. The unit's interior temperature may not be low enough to prevent spoilage.
- Do not place heavy objects on top of the wine cooler.

# INSTALLATION INSTRUCTIONS

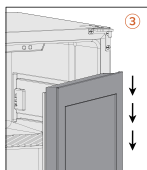
## Installing Reversible Door



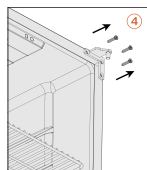
Twist down the screws of the lower door hinge



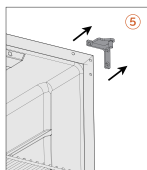
Remove the lower door hinge



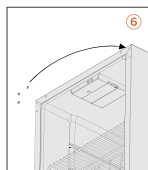
Remove the door



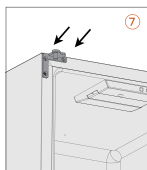
Twist down the screws of the upper door hinge



Remove the upper door hinge



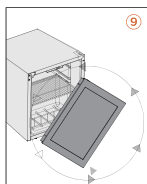
Remove the hole plugs from the left holes to the right holes



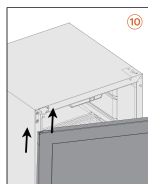
Install the upper left door hinge



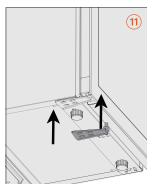
Tighten the screws of the upper left door hinge



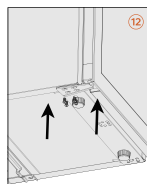
Turn the door 180 degrees



Install the door upwards



Install the lower left door hinge



Tighten the screws of the lower door hinge

## Cleaning Your Cooler

---

### How to clean your cooler:

- Unplug the cooler and remove anything inside.
- Wash the inside of the unit with a solution made of warm water and neutral detergent.  
Do not use abrasive cleaners.
- Use mild, soapy water to clean the unit's door seal.
- To ensure efficient operation, also thoroughly clean the back and bottom of the wine cooler.
- To clean the outside of the unit, use a mild detergent and warm water.

## Moving Your Cooler

---

### To move your cooler:

- Remove anything stored inside.
- Securely tape down all loose parts located inside the unit.
- Turn the leveling feet up to the base in order to avoid damage.
- Tape the door shut.
- Be sure the cooler stays in an upright position during transportation.

# TROUBLESHOOTING GUIDE

Problem	Possible Causes	Solution
<b>The wine cooler does not cool.</b>	The unit may be plugged in using a different voltage.	Check if using the wrong voltage.
	The circuit breaker may be tripped or there is a blown fuse.	Reset the circuit breaker or check for a broken fuse.
<b>The wine cooler is not cold enough.</b>	The external environment may require a higher setting.	Lower the temperature of the cooler.
	The cooler may be placed too close to a heat source.	Keep the cooler away from direct sunlight or other heat sources.
	There is insufficient ventilation.	Place the beverage cooler in an area with proper ventilation and clearances.
	The door is not completely closed or the door seal is not working properly.	Close the door tightly. Do not open the door frequently and do not keep the door open for extended periods of time. Replace the seal on the door if necessary.
<b>The wine cooler seems to make too much noise.</b>	The unit is not leveled.	Adjust the unit's feet and ensure the product is level.
	There is insufficient ventilation. The unit is too close to a wall or another surface.	Allow sufficient clearance around the unit.
<b>An interior red light is flashing.</b>	The set temperature is too low.	Adjust the set temperature so that it is higher than the wine cooler's interior temperature.
<b>Frost is building up in the unit.</b>	There is excess humidity or the interior temperature is too low.	Turn off the beverage cooler, unplug it, and remove the frost buildup manually. Reconnect the power once the ice has thawed.



# LIMITED MANUFACTURER'S WARRANTY

## 1 YEAR WARRANTY PARTS

---

For a year (12 months) from the purchase by the original owner, we would provide accessories to replace any part of the unit which proves to be defective in material or workmanship, with installation video or online guide. You could also contact us by email to get a solution.

During this period we will provide all parts necessary to correct such defects free of charge, so long as the unit has been installed and operated in accordance with the written instructions in this manual.

## 3 YEAR WARRANTY COMPRESSOR

---

For the 2<sup>nd</sup> through the 3<sup>rd</sup> year from date of original purchase, we will provide a replacement compressor free of charge due to a failure.

You are responsible for the service labour and freight charges. Cost to move the wine cellar to the servicers' shop and back to the user's home, as may be required, are the user's responsibility.

## WHAT IS NOT COVERED

---

Damage due to such things as accident, misuse, abuse, mishandling, neglect, acts of God, fires, earthquakes, floods, high winds, government, war, riot or labour troubles, strikes, lockouts, delay of carrier, or any cause beyond the control of the Seller whether similar or dissimilar to the foregoing.

Content losses due to spoilage.

Incidental or consequential damages.

Parts and labour costs for the following will not be considered as warranty:

- ° Door springs, and/or frames.
- ° Inner door panels, door rails and/or door supports.
- ° Light bulbs and/or plastic housing.
- ° Plastic cabinet liners.

Punctured evaporator that voids the warranty on the complete sealed system.

Purchaser understands and acknowledges that the goods purchased are wine cooler which store wines. Purchaser assumes all risk of using this unit, including risk of spoilage, humidity variations, temperature variations, leaks, fire, water damage, mold, mildew, dryness, and similar perils that might occur.

Repairs performed by unauthorized servicers.

Damage caused by external influences.

Excess wear and tear by the user.

Service calls that do not involve defects in material or workmanship such as customer education, door reversal, or proper installation.

Service calls that are related to external problems, such as abuse, misuse,

inadequate electrical power, accidents, fire, floods, or acts of God.

Replacement of house fuses or resetting circuit breakers.

Failure of the product if it is used for other than its intended purpose.

This warranty does not apply outside Canada or the Continental USA.

## CUSTOMER SERVICE

### Read This Guide Carefully.

It is intended to help you operate and maintain your new wine cellar properly. Keep it handy to answer your questions.

Keep proof of original purchase date (such as your sales slip) with this guide to establish the warranty period.

Save time and money. Before you call for service, check the Troubleshooting Guide. It lists causes of minor operating problems that you can correct by yourself.

Purchase Date : \_\_\_\_\_

Model Number : \_\_\_\_\_

Serial Number : \_\_\_\_\_

### Contact Us

---

We're proud of our service and want you to be pleased. If for some reason you are not happy with the service you receive, here are some steps to follow for further assistance.

First, contact the people who serviced your beverage refrigerator.

Explain why you are not pleased. In most cases, this will solve the problem.

Please feel free contact us by after-service email address ([service@calefort.com](mailto:service@calefort.com))

Next, if you are still not pleased, fill in all the detailed information, including your telephone number and send it to us :

<b>Address</b>	
<b>Phone</b>	
<b>Fax</b>	
<b>Email</b>	
<b>Online</b>	



