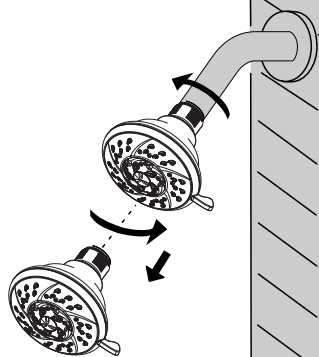
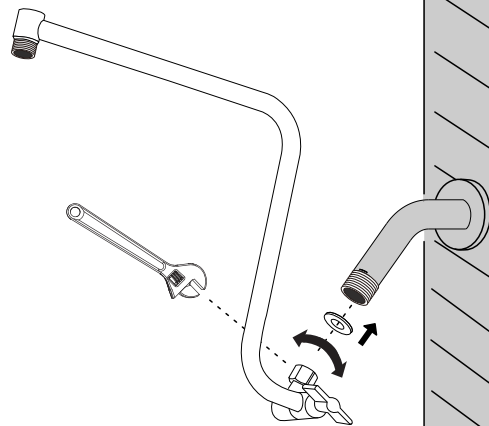


1

Remove the original shower head and clean shower arm.



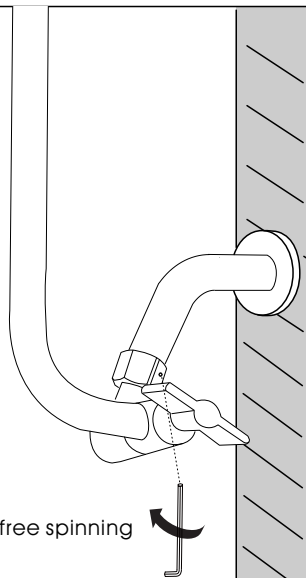
2



Put washer on extension arm and connect it with diverter.

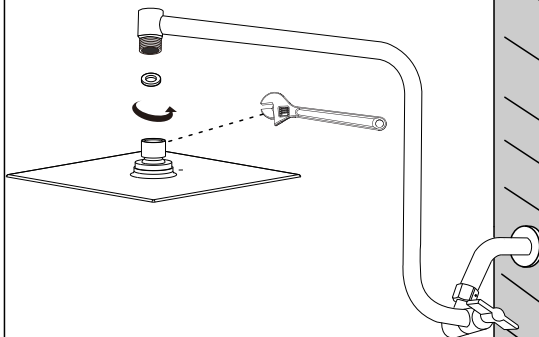
Tighten free spinning nut clockwise with wrench. (Prevent scratch with cloth)

3



Tighten the hex nut on free spinning nut for stability.

4



Put washer on rainfall shower head and connect it with shower arm.

Tighten the rainfall shower head clockwise with wrench. (Prevent scratch with cloth)

## Rainfall Shower Head with Extension Arm

Installation instruction



MB/BN/CH

### CARE INSTRUCTIONS

Rinse the product with clear water. Dry the product with a soft cloth.

### DO NOT:

Use abrasive cleansers, cloths, or paper towels. Use any cleaning agents containing acid, polish, wax, alcohol, ammonia, bleach, solvent or any other corrosive or harsh chemical cleansers.

### No. Description

A shower head

B shower arm

A



B

