

INSTALLATION

Product Manual

Version: 250023-04-24A-MH



IMPORTANT INFORMATION!

please read the entire manual before starting to assemble and/or using this product. follow the manual thoroughly and keep it for further reference.



AVOID SCRATCHES!

In order to avoid scratching this furniture should be assembled on a soft layer-could be a rug.



IMPROVE EFFICIENCY !

Try to find a partner to install with you, which can speed up the installation efficiency and shorten the time.



ANTI-TOPPLE WARNING !

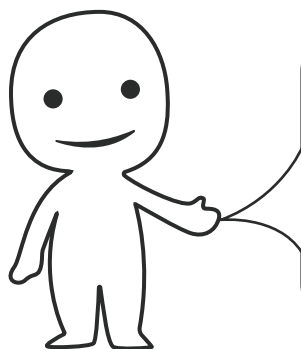
Overturned furniture can cause serious or fatal crush injuries. To prevent tipping over, be sure to use the wall attachment, if not included with this product. Please purchase the wall attachment that fit your wall. If unsure, seek professional advice. Please read and follow each step of the instructions carefully.

IMPORTANT !

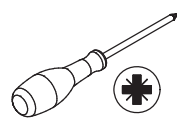
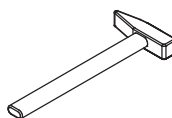
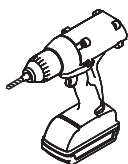
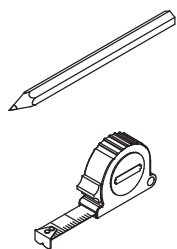
It is important that any product which is assembled using any kind of screw is re-tightened 2 weeks after assembly, and once every 3 months - in order to assure stability through-out the lifespan of the product.

For regular maintenance and cleaning of the product, for the frame, please use a rag dipped in neutral detergent to fully wipe it, and then dry it with a clean rag. For glass materials, wipe with a rag dampened with water glass cleaner, and then dry with a dry rag.

Do not use an electric screwdriver, and do not use too much force when installing, because the board is easy to break.

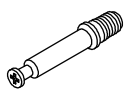


Please prepare the following tools



When installing, please carefully confirm whether each screw corresponds to the manual, accessories with similar shapes can be distinguished by size

A x 52



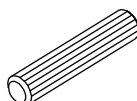
CRA0635A

B x 52



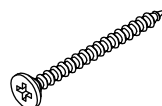
CRB1595B

C x 60



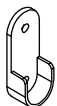
CRF0830A

D x 17

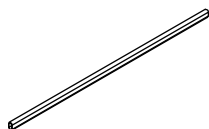


CRD0435A

E x 2

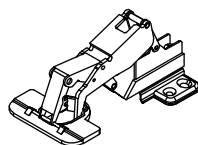


F x 1



L=862 mm

G x 8



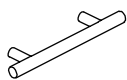
Ø 35

H x 52



CRD3514A

J x 1



150 mm

K x 1



20 x 23 mm

L x 3



CRE0418A

M x 18



N x 18



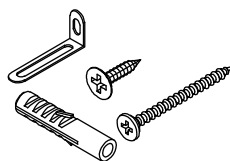
CRD0316A

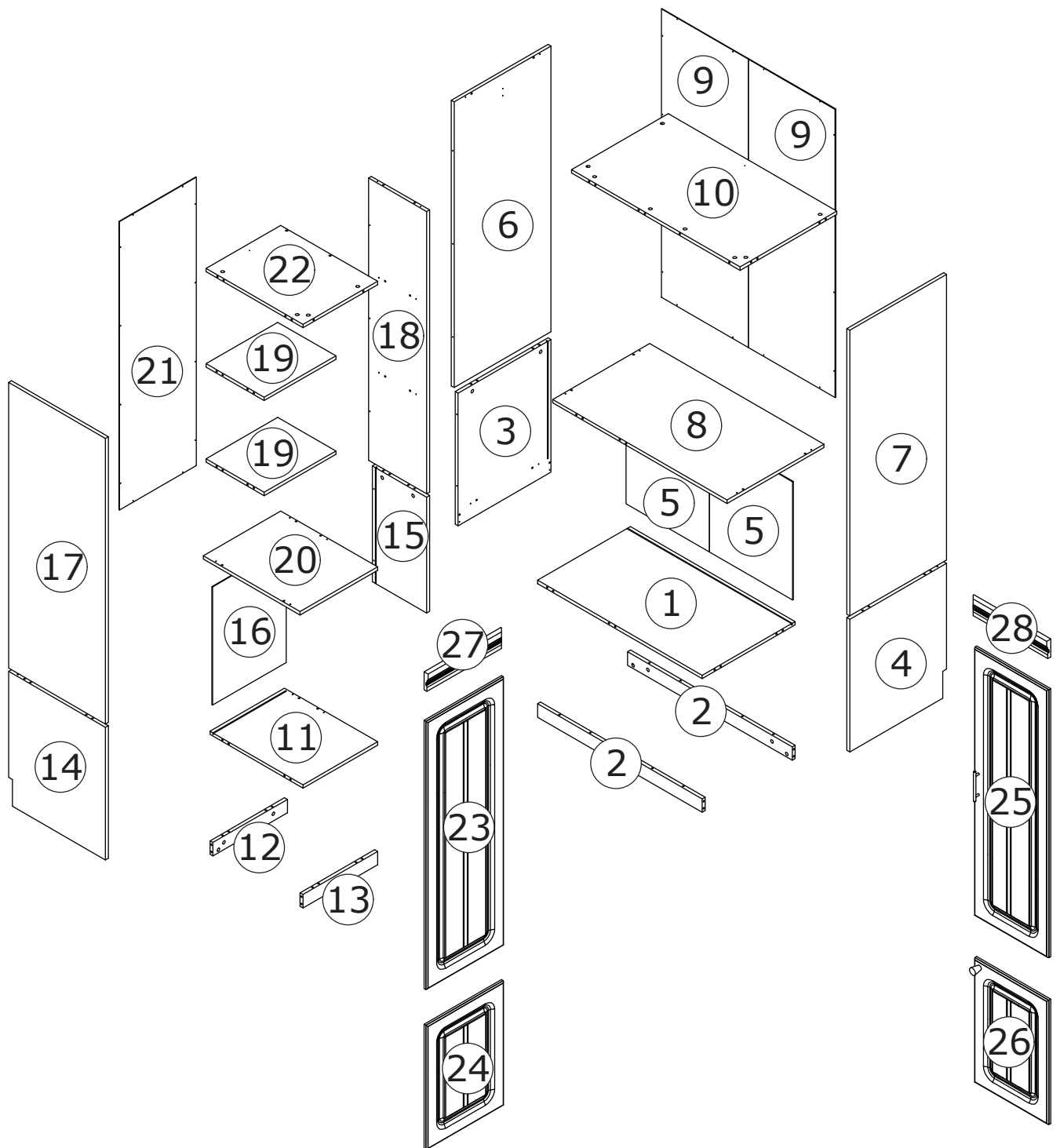
P x 28



CRE0312A

Q x 2





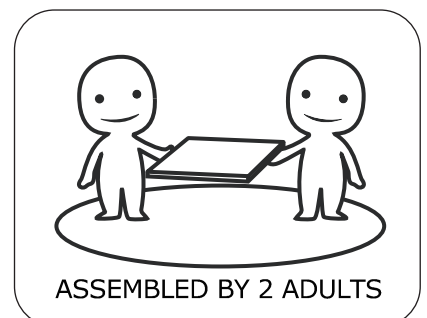
⚠ WARNING



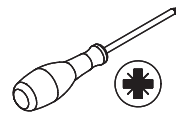
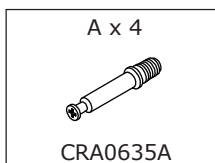
Children have died from furniture tipover. To reduce the risk of furniture tipover:

- ALWAYS install Anti-tip device provided.
- NEVER put a TV on this product.
- NEVER allow children to stand, climb or hang on drawers, doors, or shelves.
- NEVER open more than one drawer at a time.
- Place heaviest items in the lowest drawers.

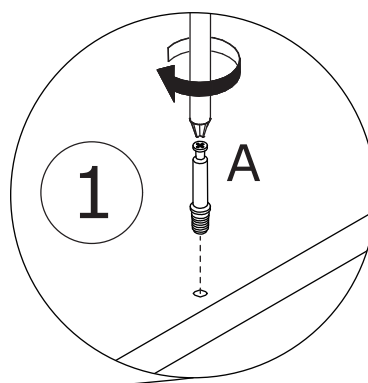
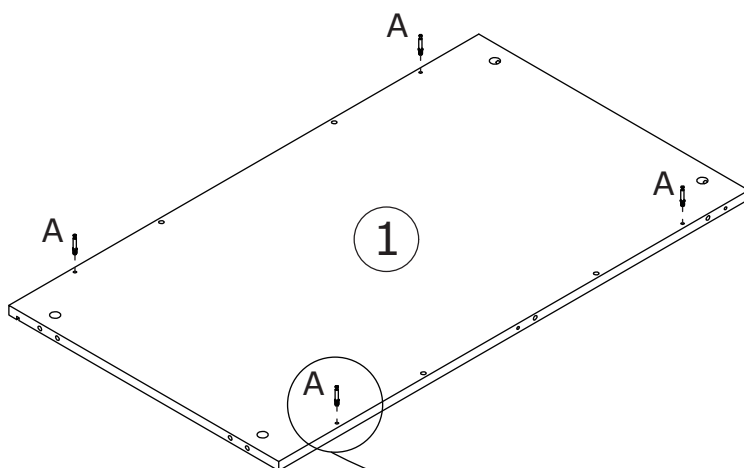
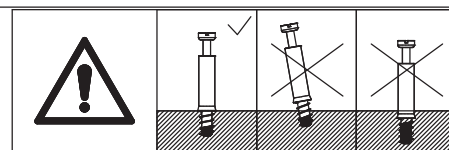
*This is a permanent label.
Do not remove!*



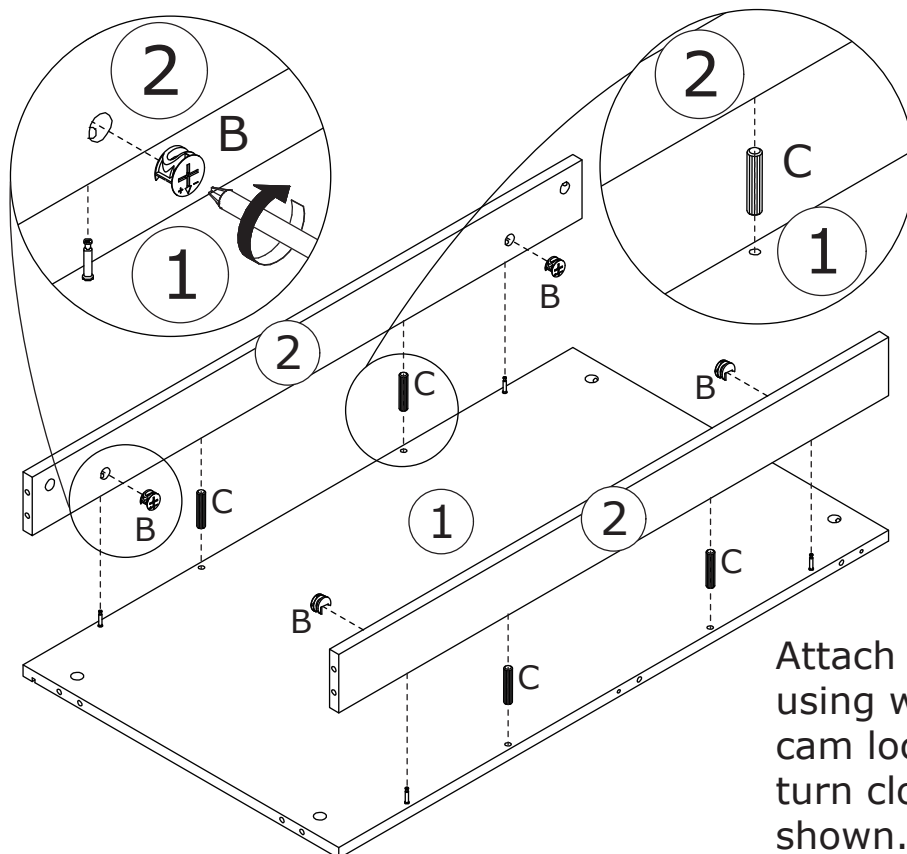
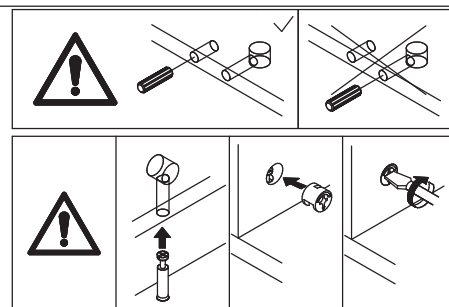
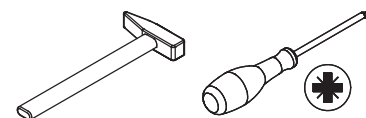
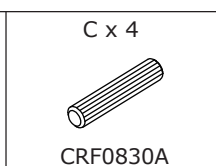
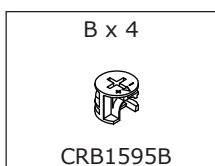
1



Screw eccentric rod(A) into board 1 at first.



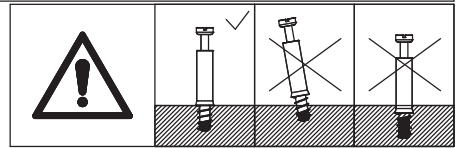
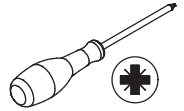
2



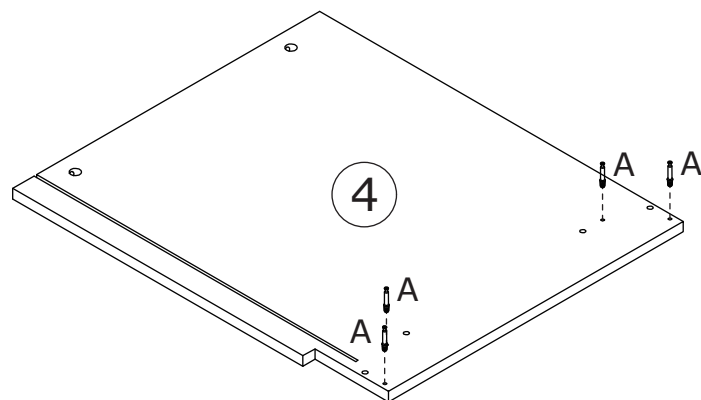
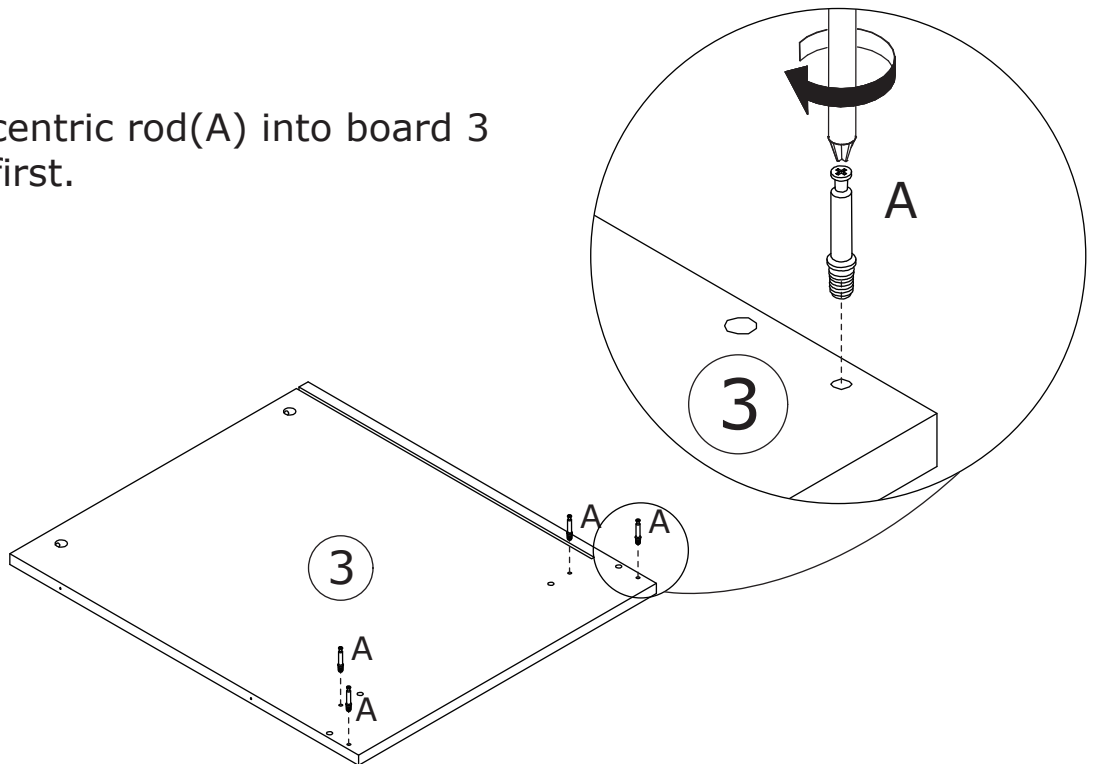
Attach board 2 to board 1 using wooden dowel(C), add cam lock(B) into board 2 and turn clockwise to tighten as shown.

3

A x 8
CRA0635A



Screw eccentric rod(A) into board 3 and 4 at first.



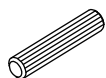
4

B x 8

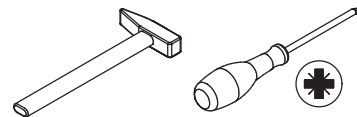


CRB1595B

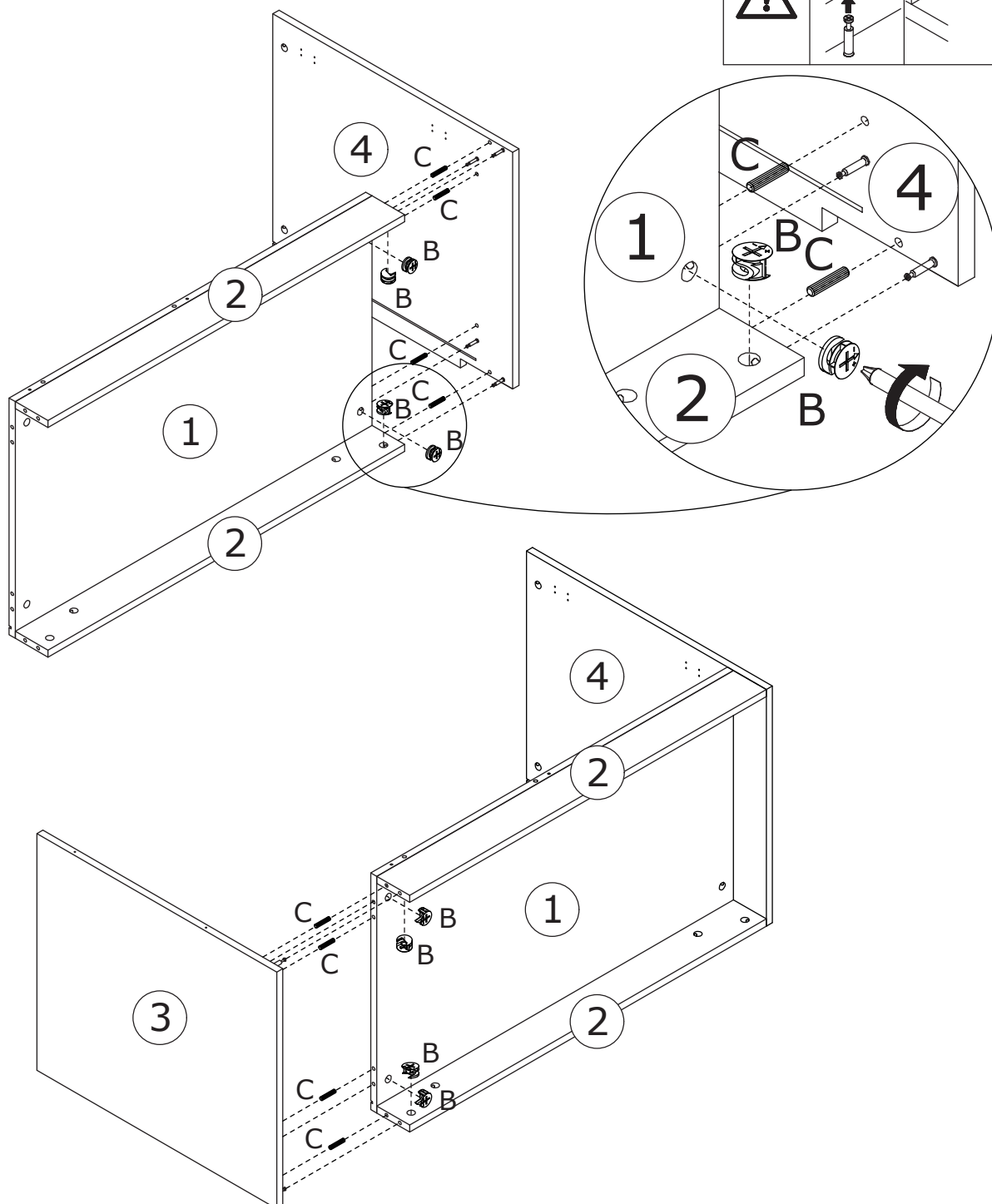
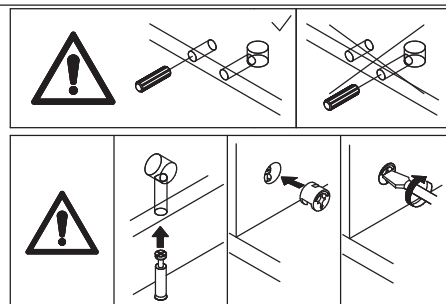
C x 8



CRF0830A

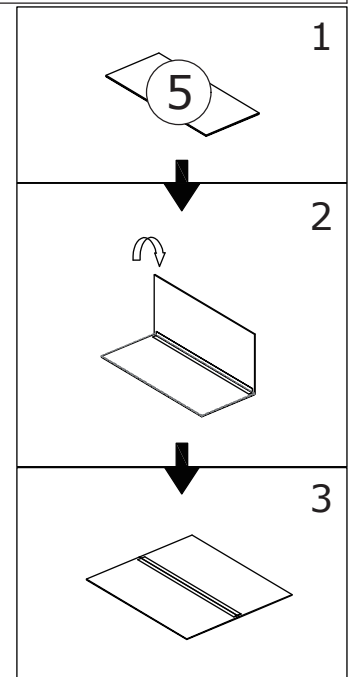
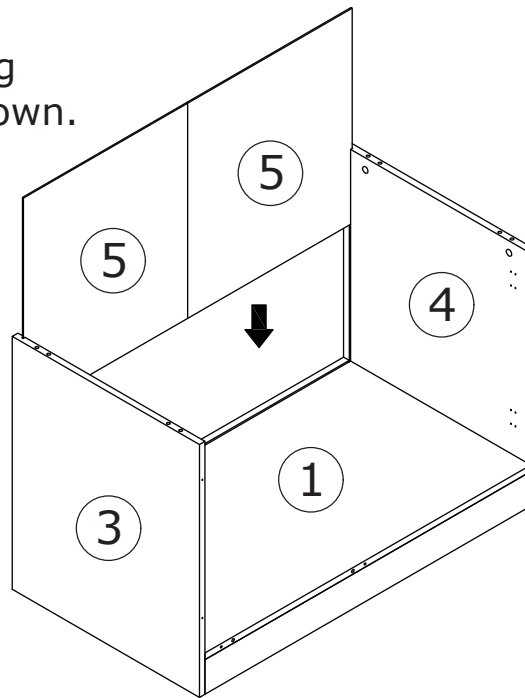


Connect board 3 and 4 to board 1 and 2 using wooden dowel(C), add cam lock(B) into board 1,2 and turn clockwise to tighten as shown.

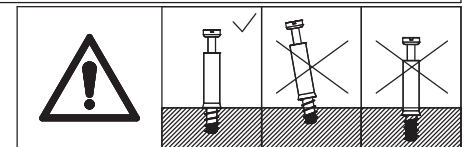
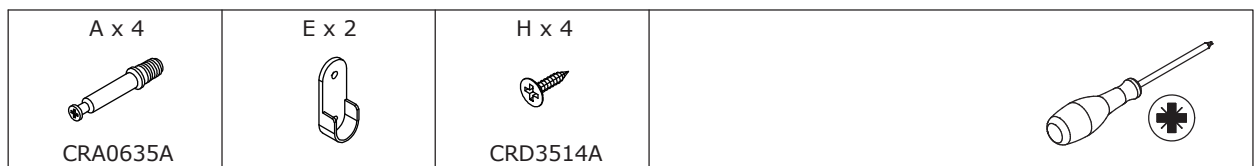


5

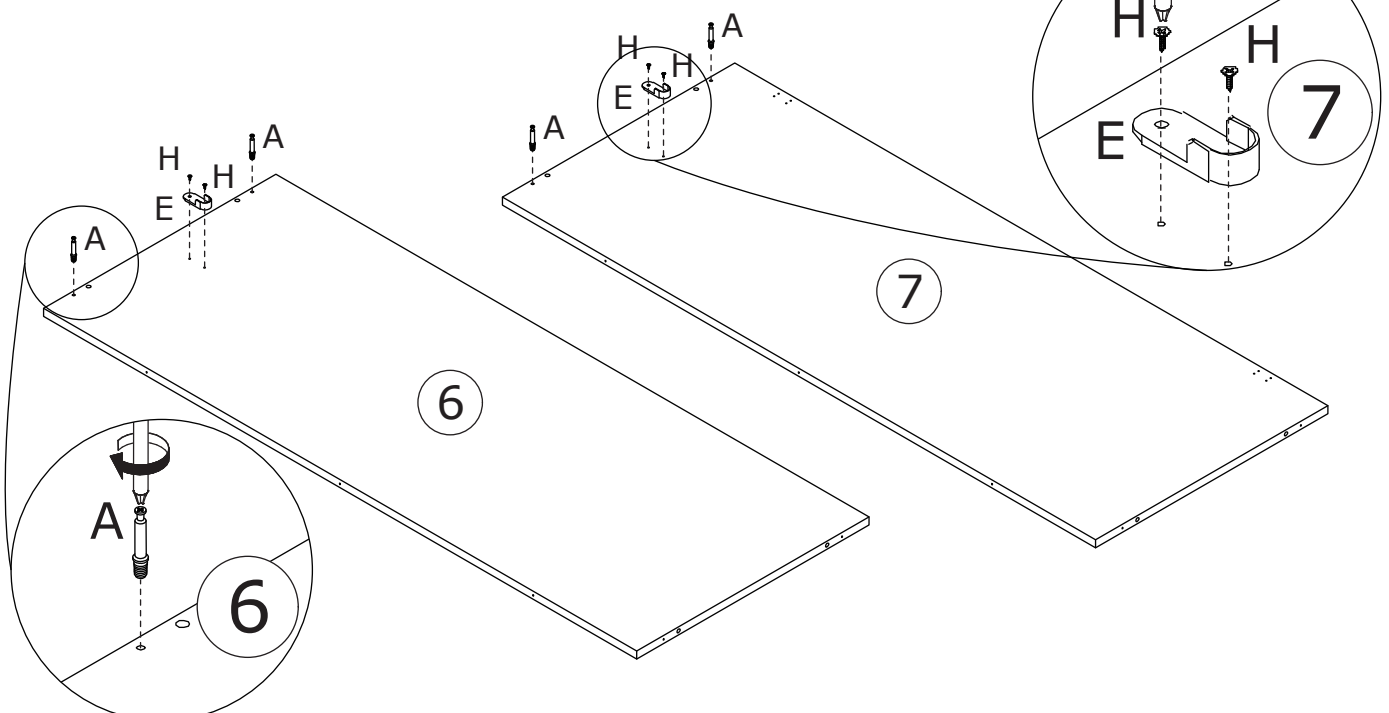
Slide back board 5 along available grooves as shown.



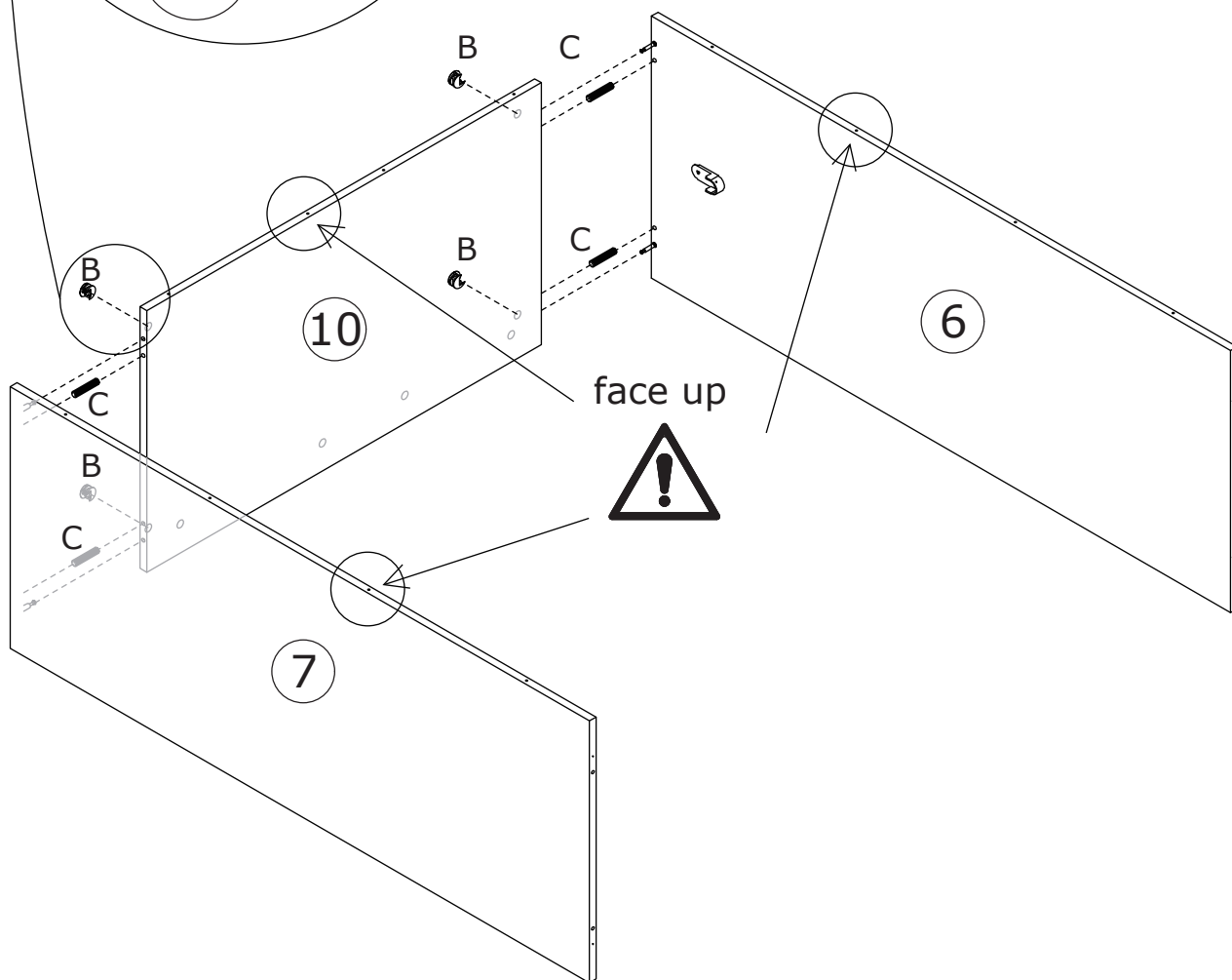
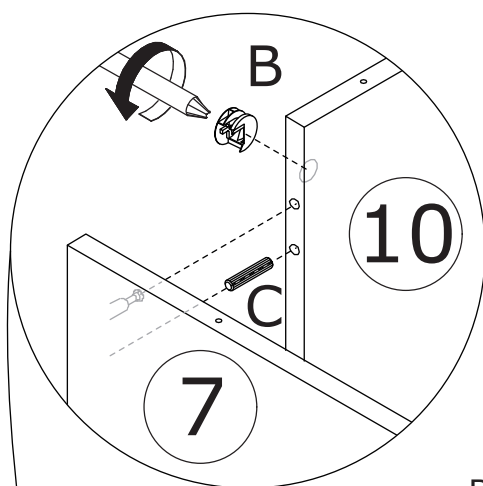
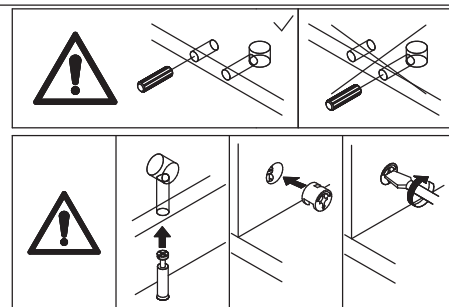
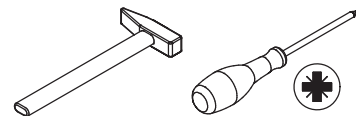
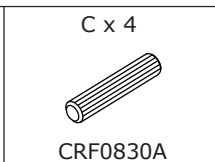
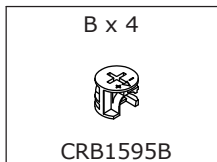
6



Screw eccentric rod(A) into board 6 and 7 at first.
Fix part(E) to board 6 and 7 with screw(H) as shown.

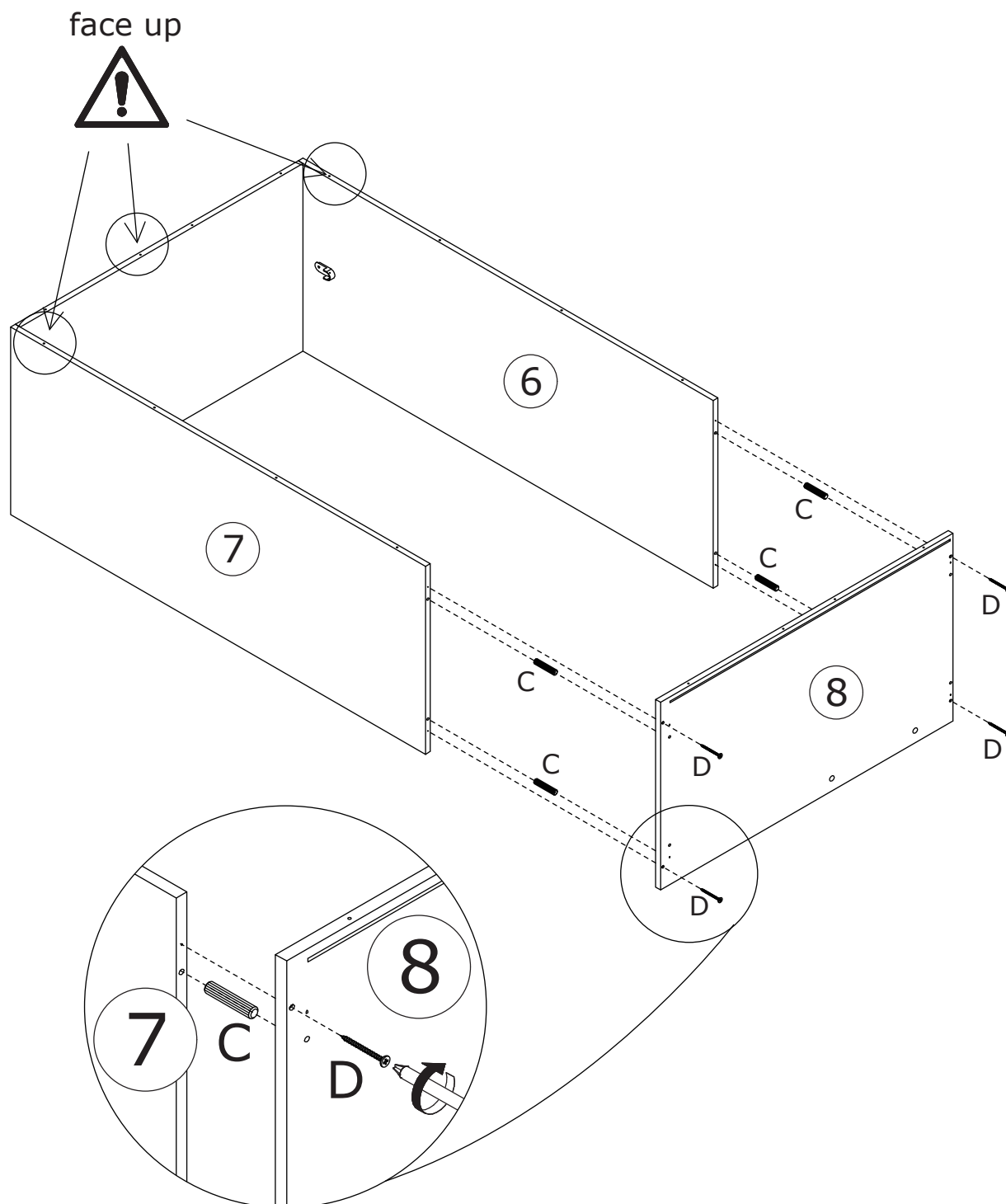
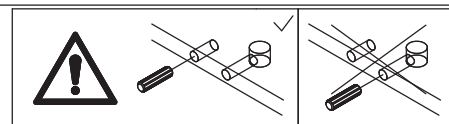
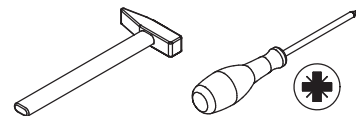
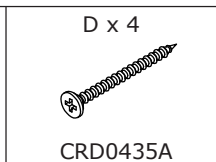
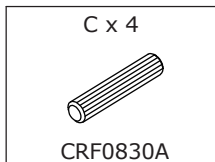


7



Connect board 6 and 7 to board 10 using wooden dowel(C), add cam lock(B) into board 10 and turn clockwise to tighten as shown.

8



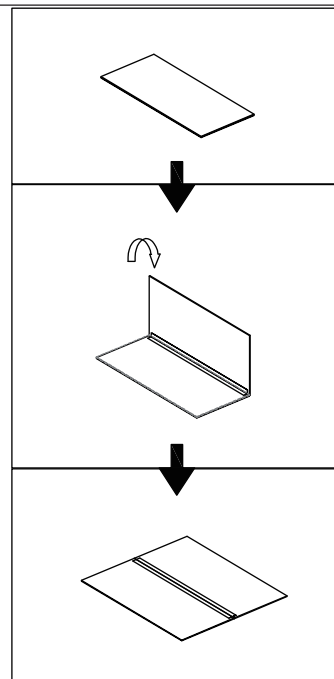
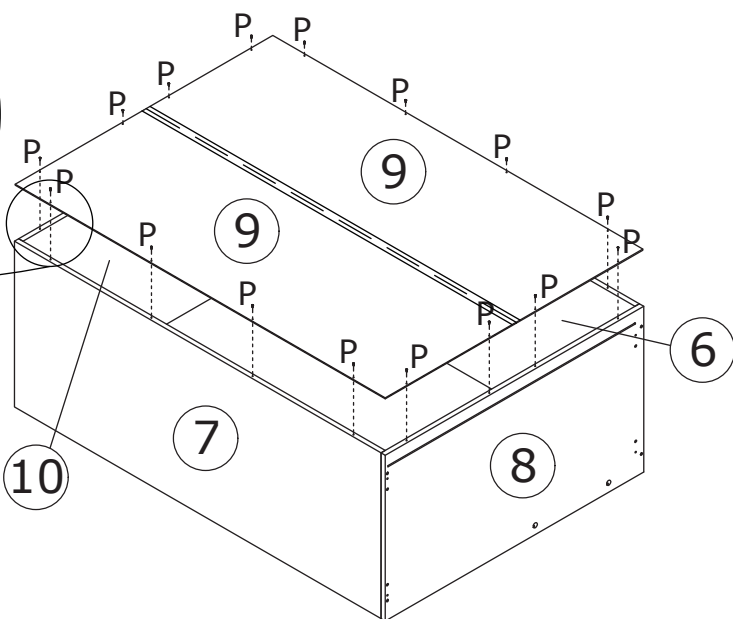
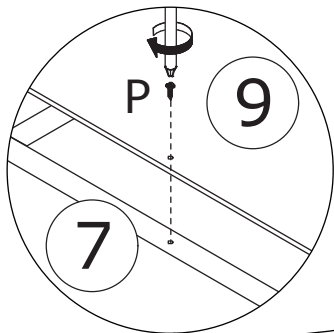
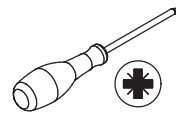
Attach board 8 to board 6 and 7 using wooden dowel(C), and fix with screw(D) as shown.

9

P x 16



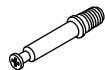
CRE0312A



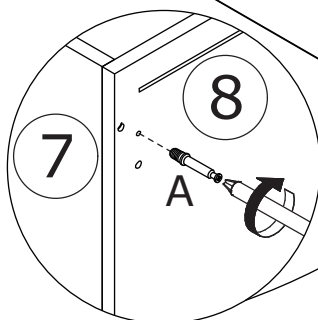
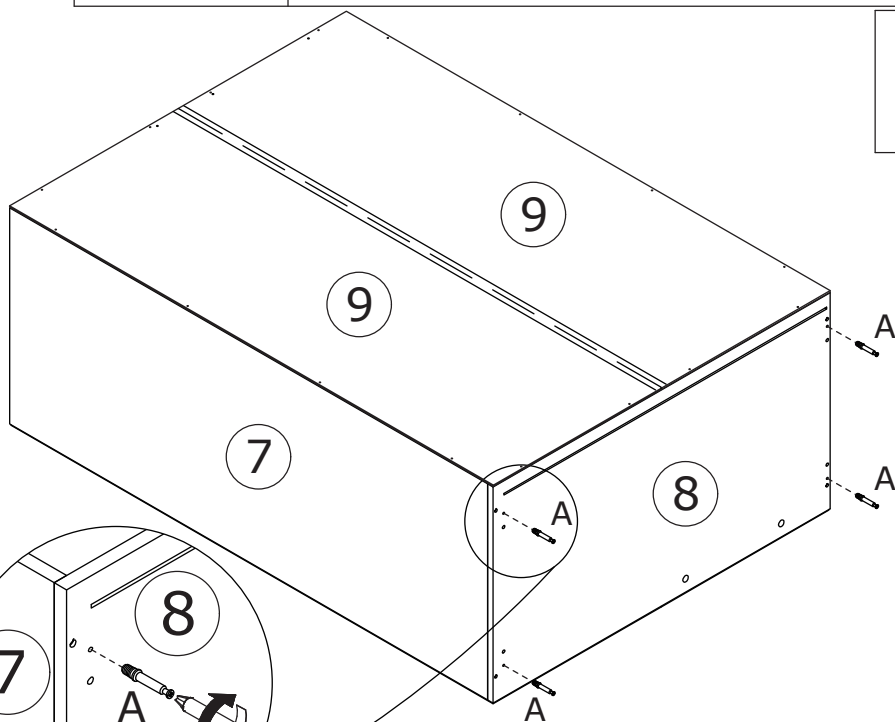
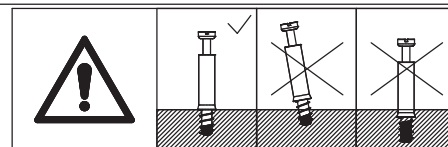
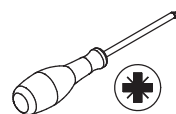
Fix back board 9 to the component with screw(P) as shown.

10

A x 4



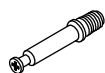
CRA0635A



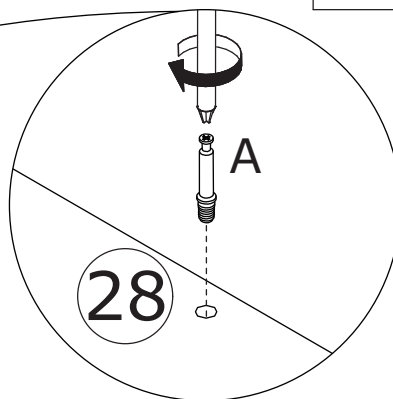
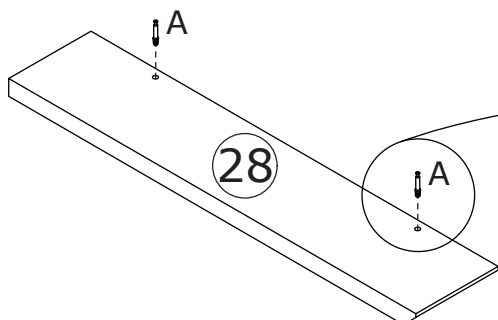
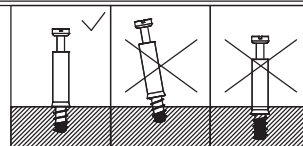
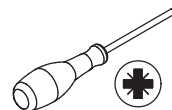
Screw eccentric rod(A) into board 8 at first.

11

A x 2



CRA0635A



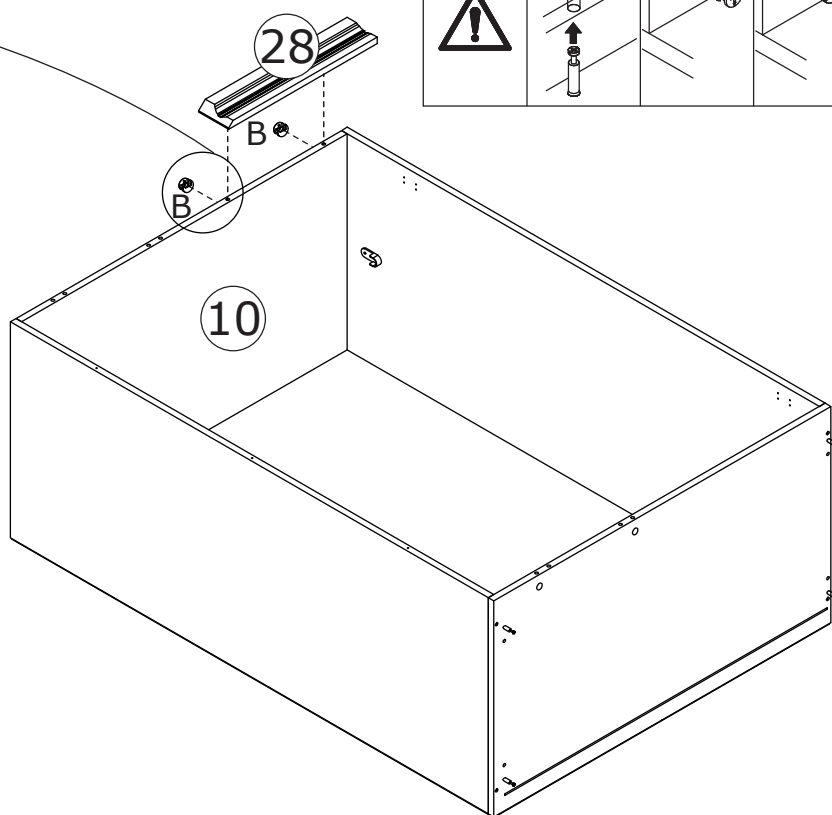
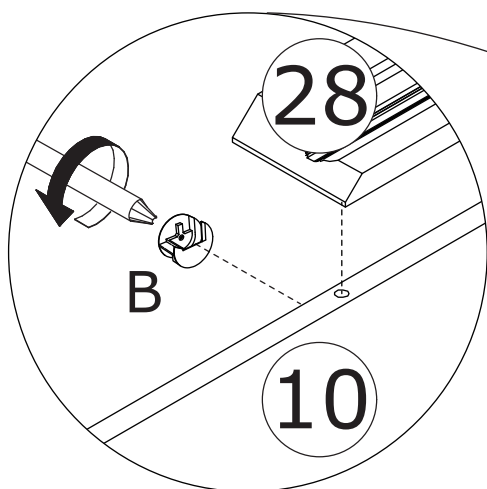
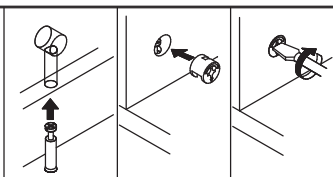
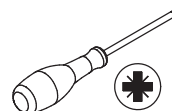
Screw eccentric rod(A) into board 28 at first.

12

B x 2



CRB1595B



Flip the cabinet, attach board 28 to board 10, add cam lock(B) into board 10 and turn clockwise to tighten as shown.

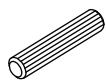
13

B x 4

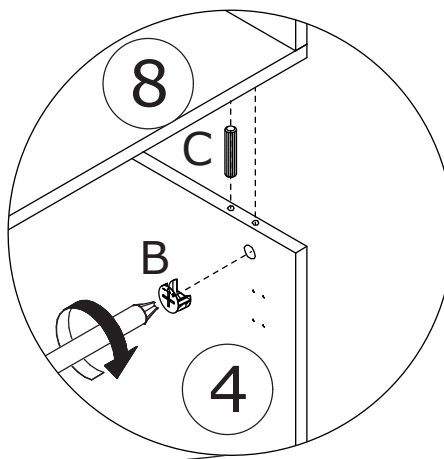
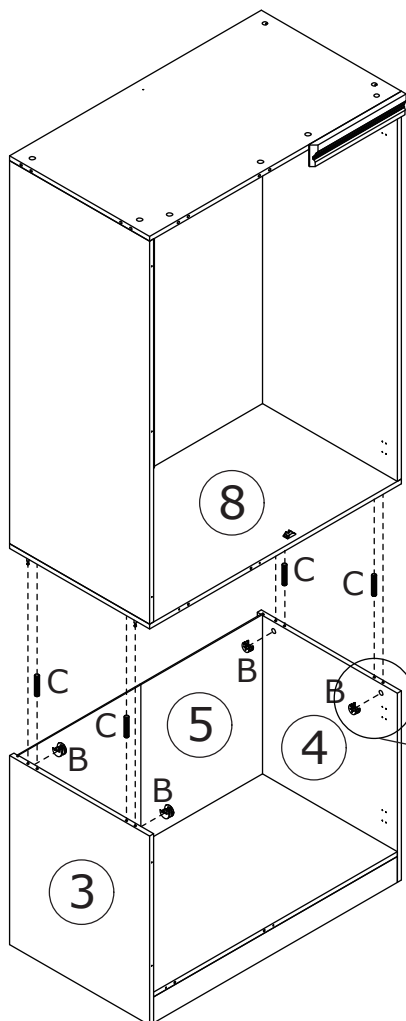
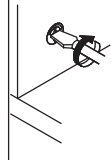
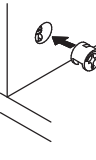
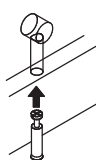
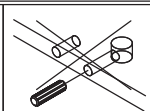
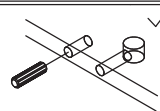
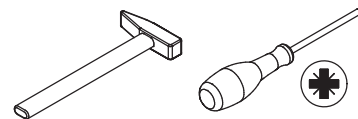


CRB1595B

C x 4



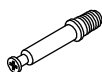
CRF0830A



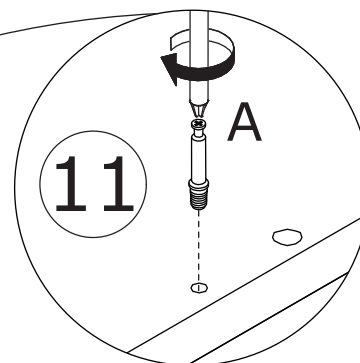
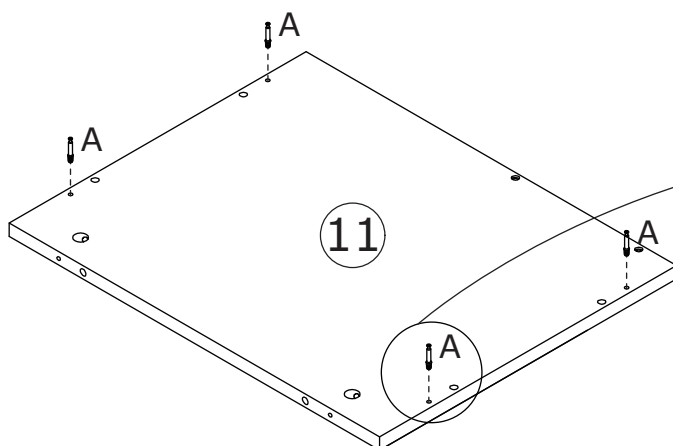
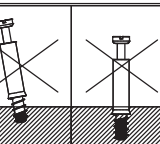
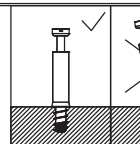
Connect the two assembled components using wooden dowel(C), add cam lock(B) into board 3,4 and turn clockwise to tighten as shown.

14

A x 4



CRA0635A



Screw eccentric rod(A) into board 11 at first.

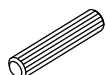
15

B x 4

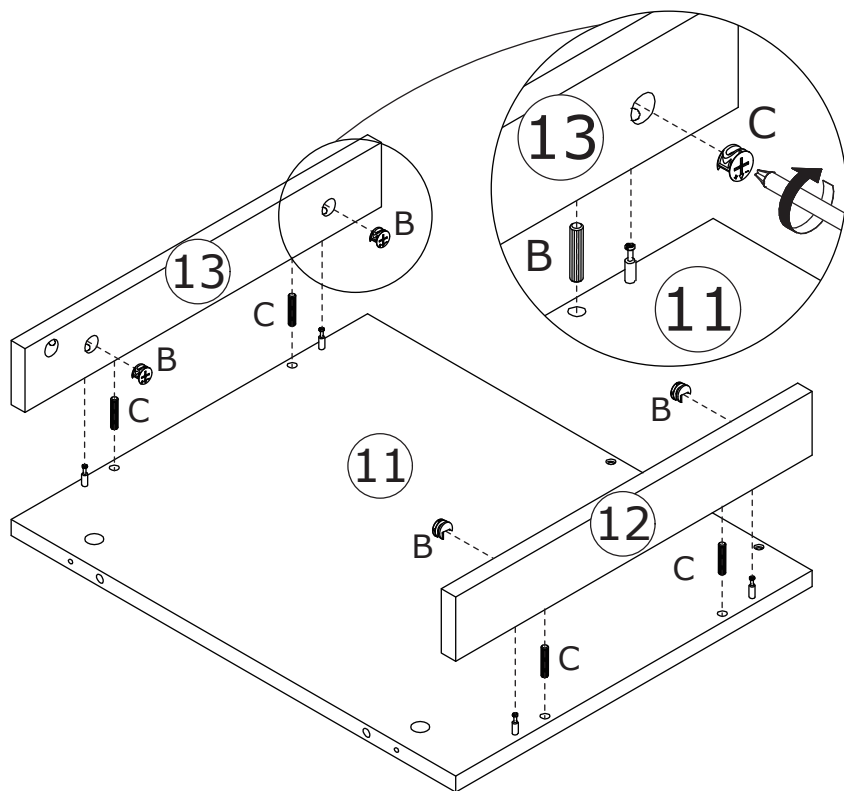
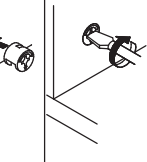
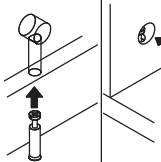
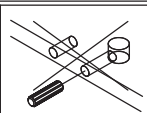
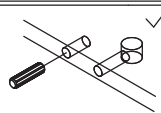
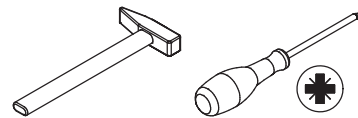


CRB1595B

C x 4



CRF0830A



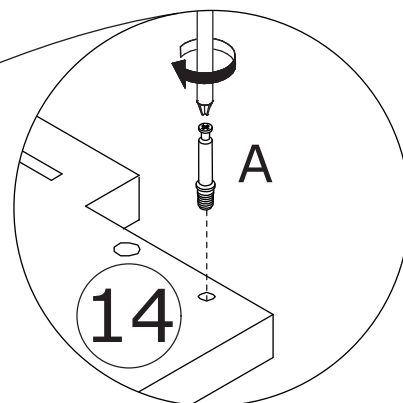
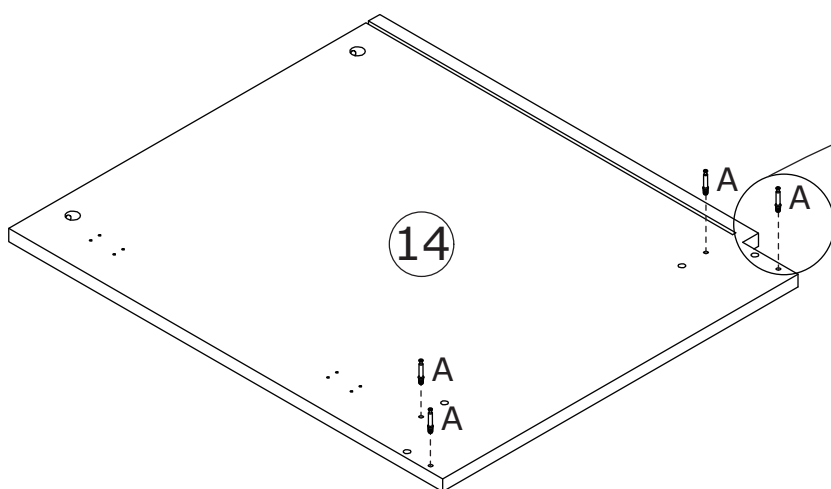
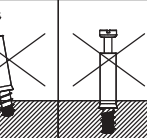
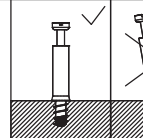
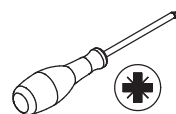
Attach board 12 and 13 to board 11 using wooden dowel(C), add cam lock(B) into board 12,13 and turn clockwise to tighten as shown.

16

A x 4

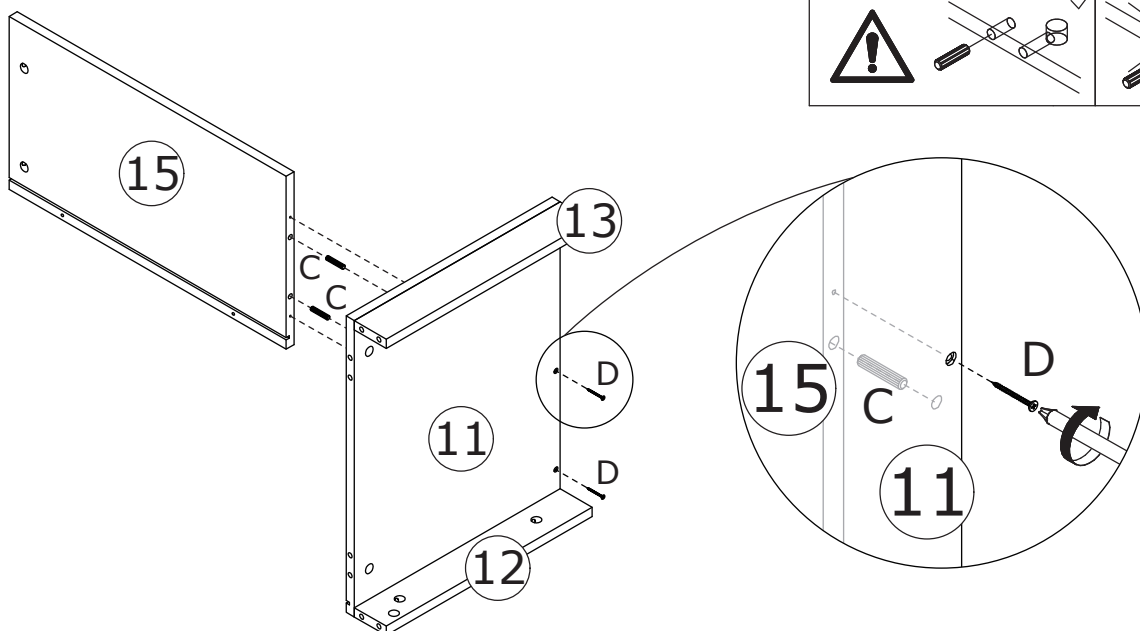
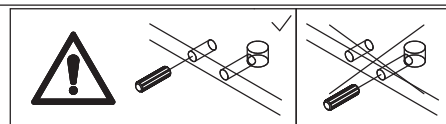
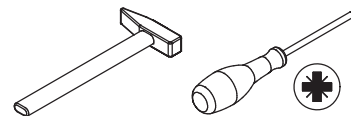
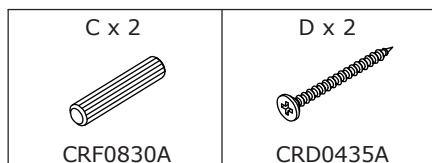


CRA0635A



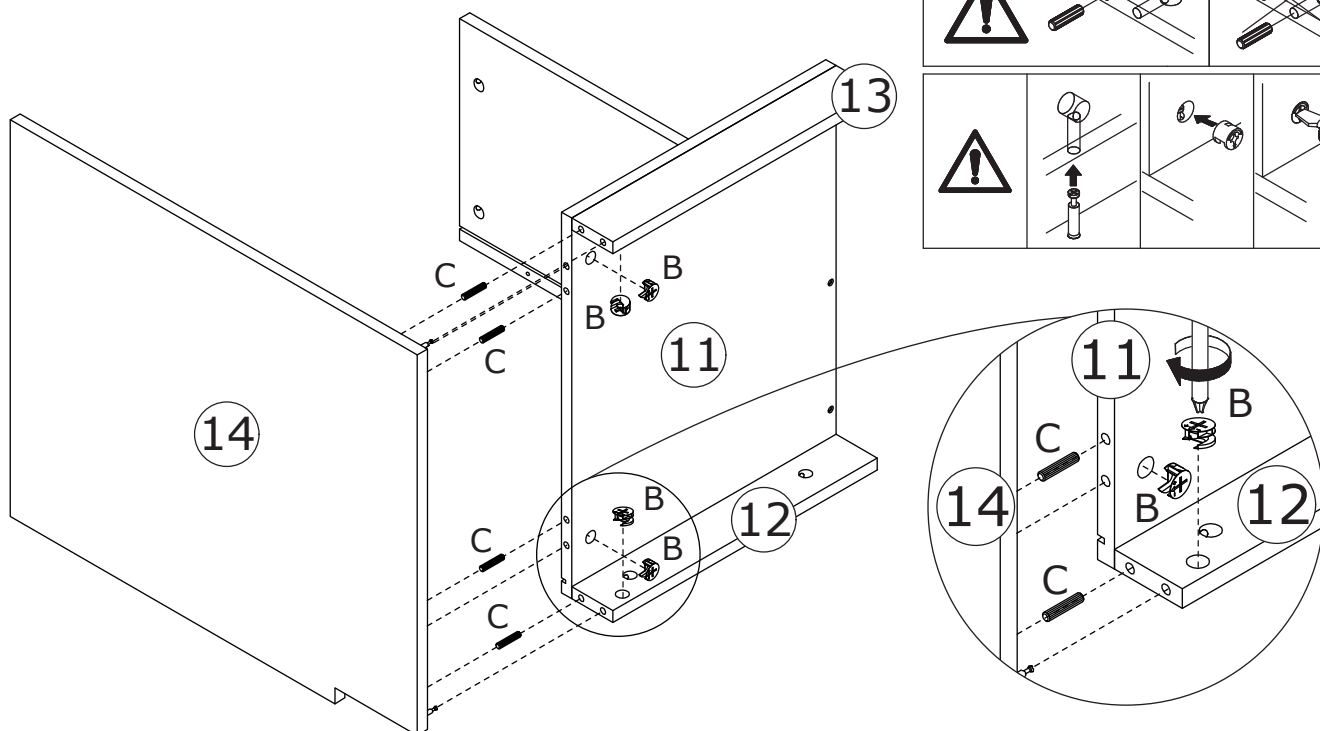
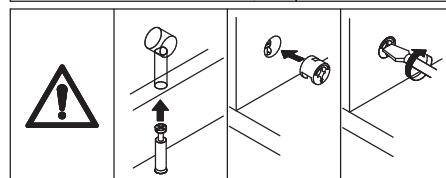
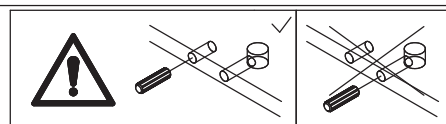
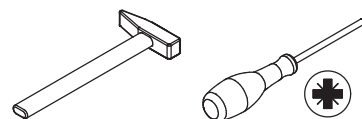
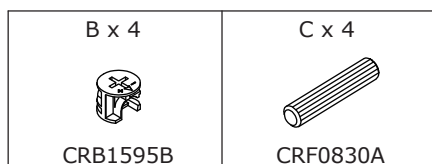
Screw eccentric rod(A) into board 14 at first.

17



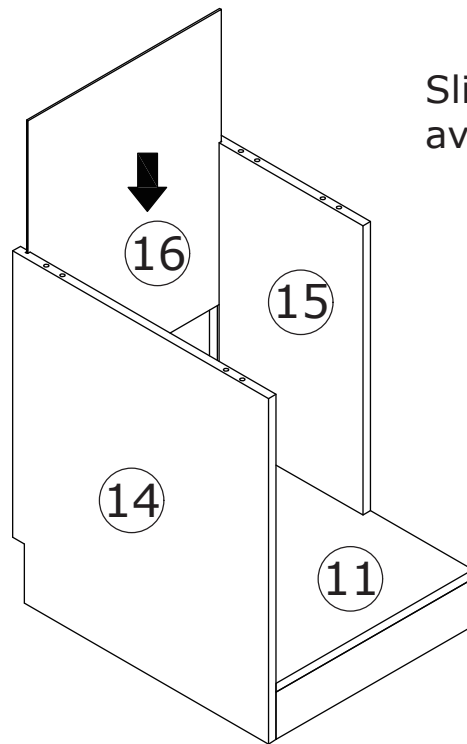
Attach board 15 to board 11 using wooden dowel(C), and fix with screw(D) as shown.

18



Attach board 14 to board 12, 11 and 13 using wooden dowel(C), add cam lock(B) into board 12,11,13 and turn clockwise to tighten as shown.

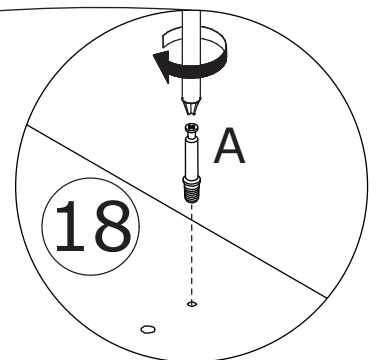
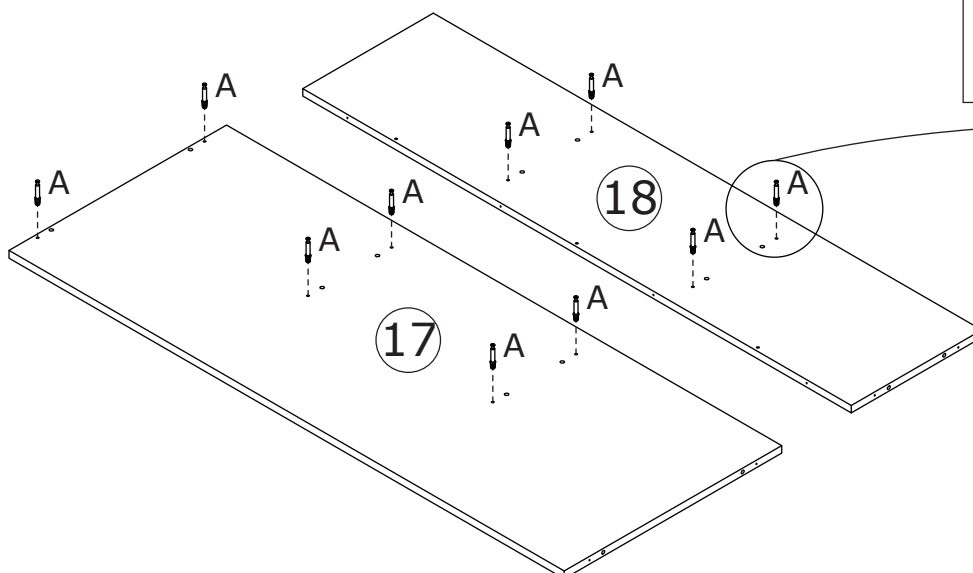
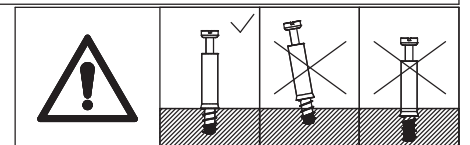
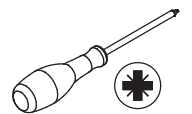
19



Slide back board 16 along available grooves as shown.


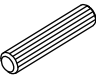
20

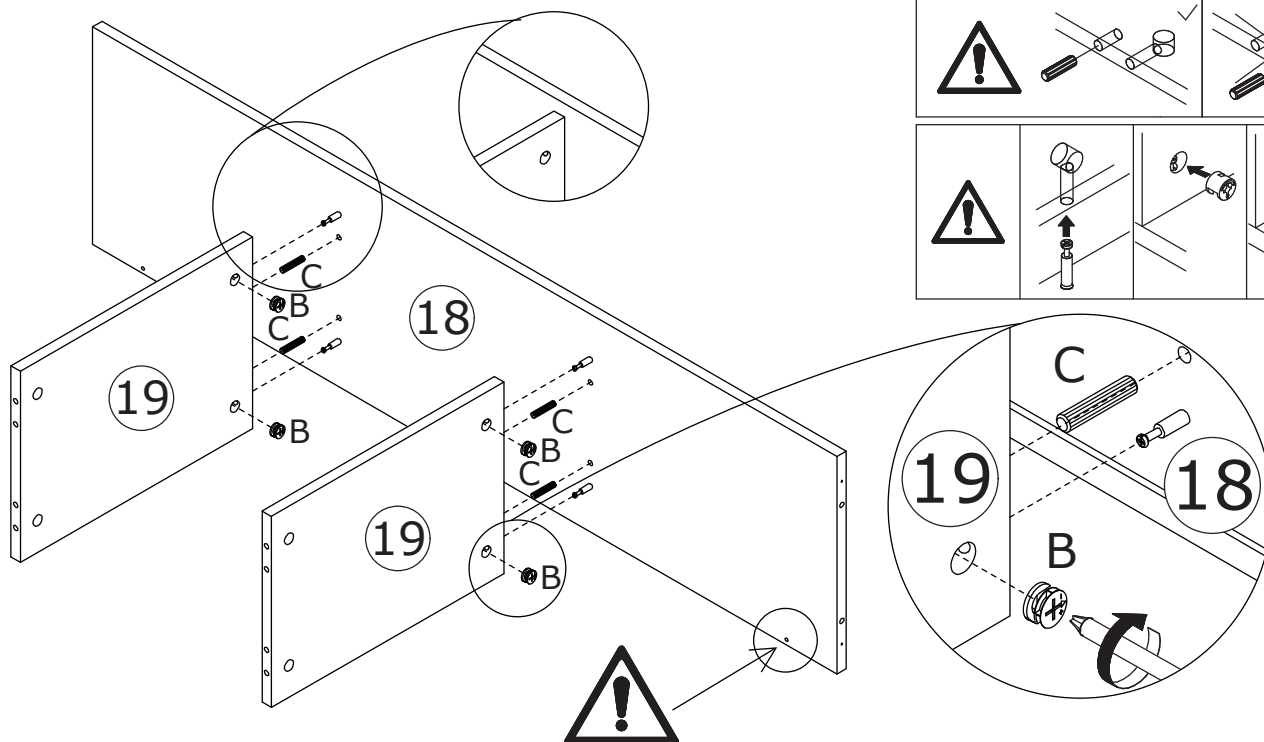
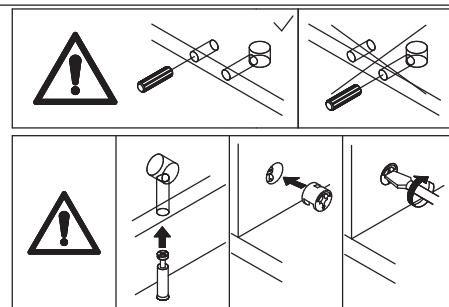
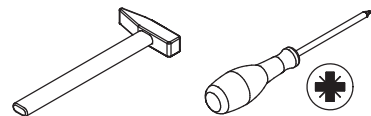
A x 10
CRA0635A



Screw eccentric rod(A) into board 17 and 18 at first.

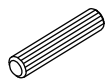

21

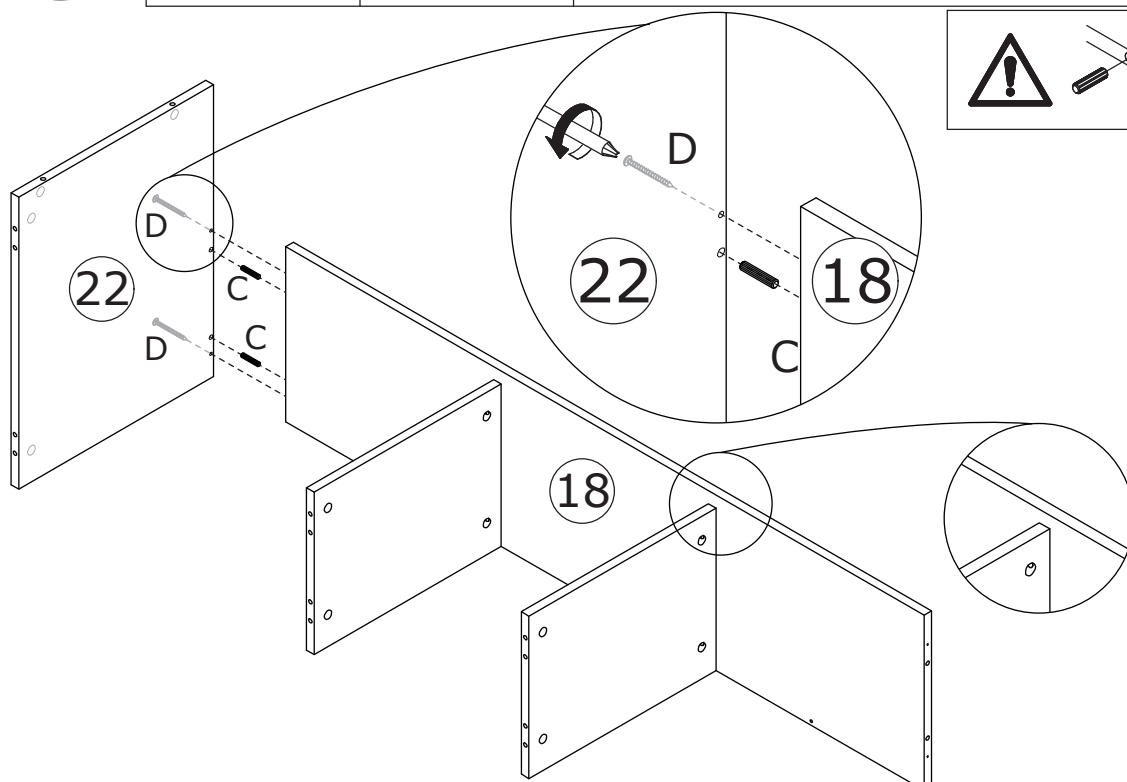
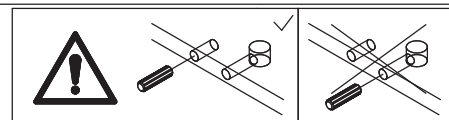
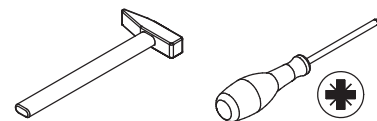
B x 4  CRB1595B	C x 4  CRF0830A
--	--



Attach board 19 to board 18 using wooden dowel(C), add cam lock(B) into board 19 and turn clockwise to tighten as shown.

22

C x 2  CRF0830A	D x 2  CRD0435A
--	--



Attach board 22 to board 18 using wooden dowel(C), and fix with screw(D) as shown.

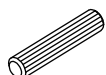
23

B x 6

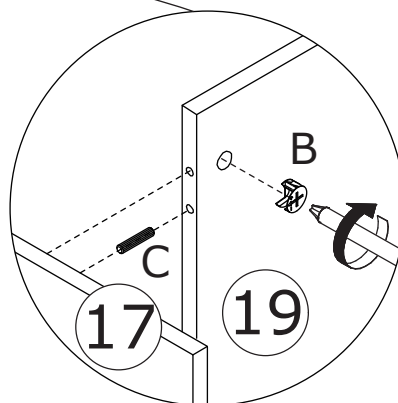
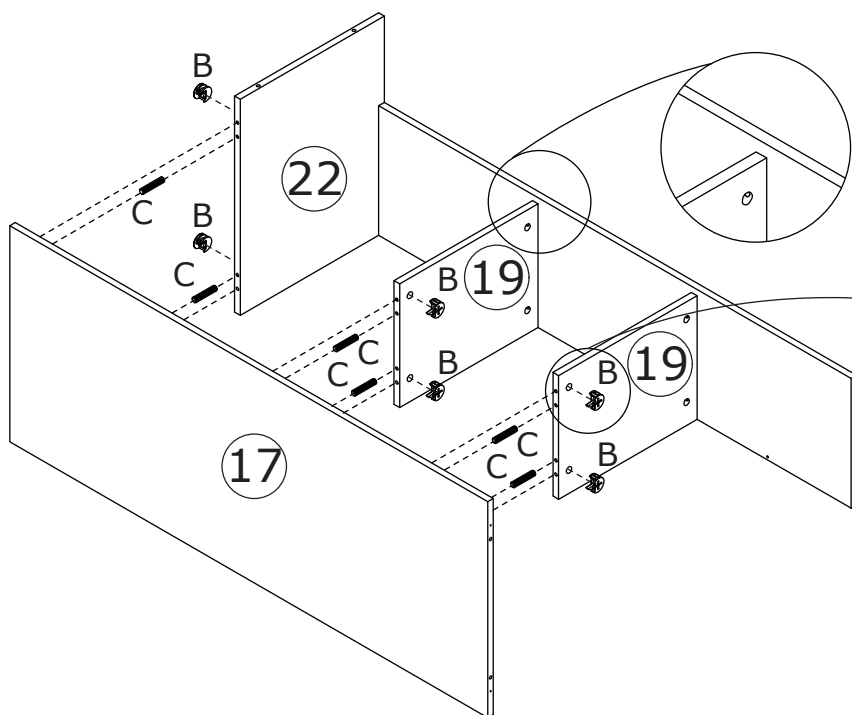
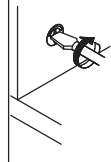
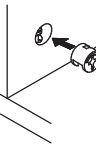
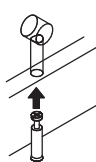
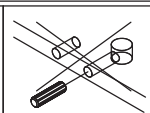
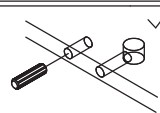
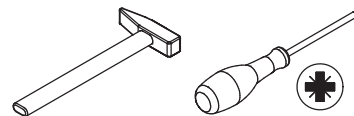


CRB1595B

C x 6



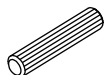
CRF0830A



Attach board 17 to board 19 and 22 using wooden dowel(C), add cam lock(B) into board 19,22 and turn clockwise to tighten as shown.

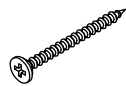
24

C x 4

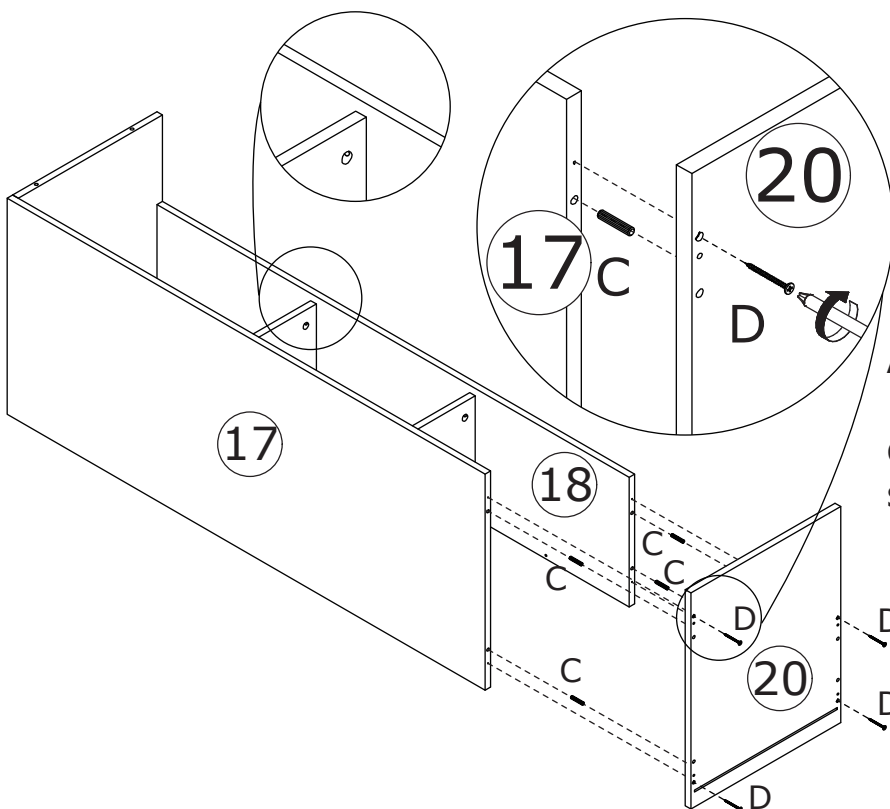
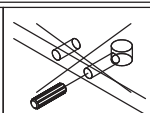
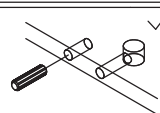
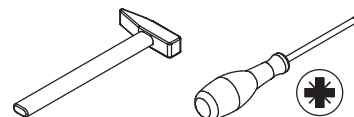


CRF0830A

D x 4



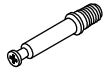
CRD0435A



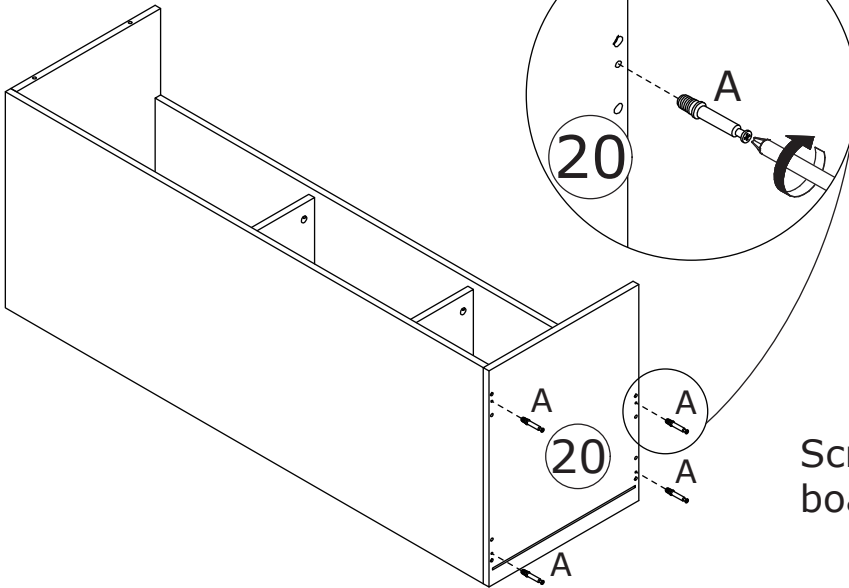
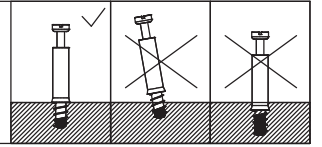
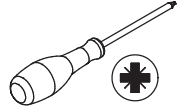
Attach board 20 to board 17 and 18 using wooden dowel(C), and fix with screw(D) as shown.

25

A x 4



CRA0635A



Screw eccentric rod(A) into board 20 at first.

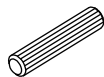
26

B x 4

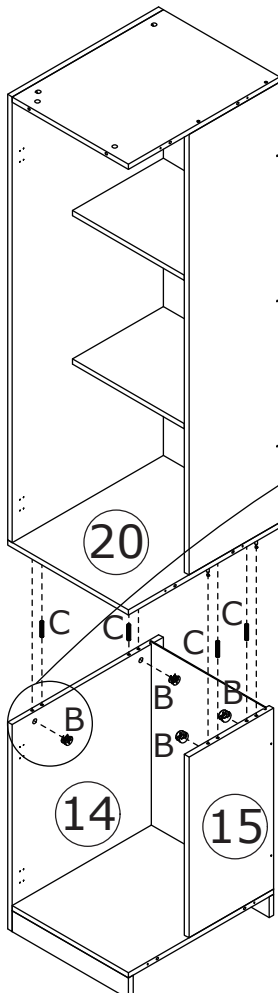
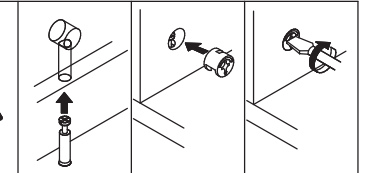
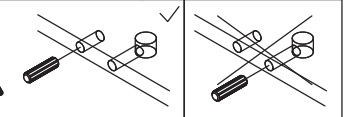
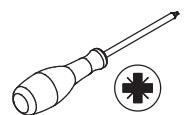
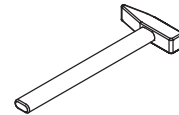


CRB1595B

C x 4

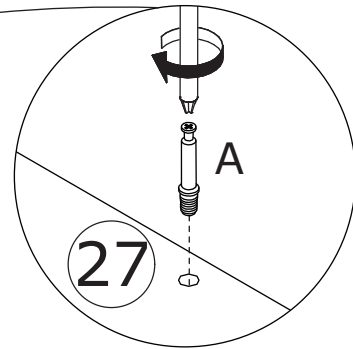
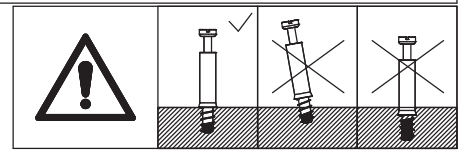
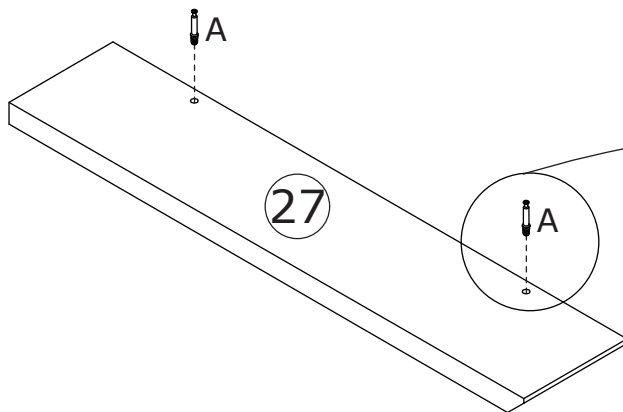
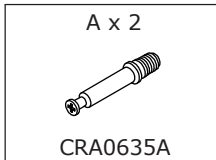


CRF0830A



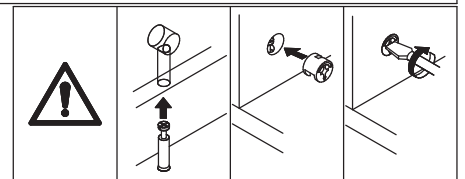
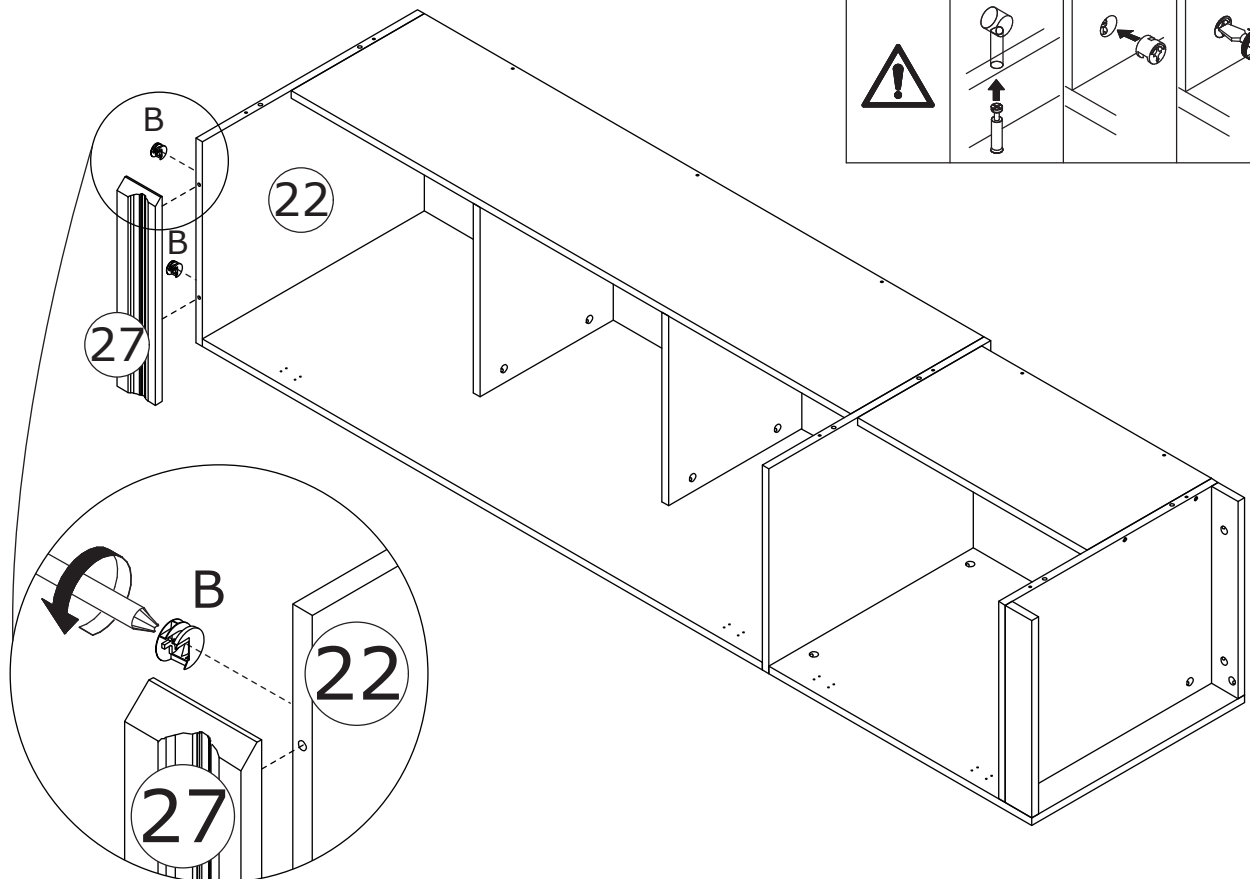
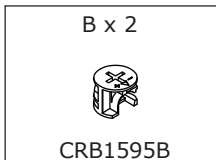
Connect the two assembled components using wooden dowel(C), add cam lock(B) into board 14,15 and turn clockwise to tighten as shown.

27



Screw eccentric rod(A) into board 27 at first.

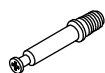
28



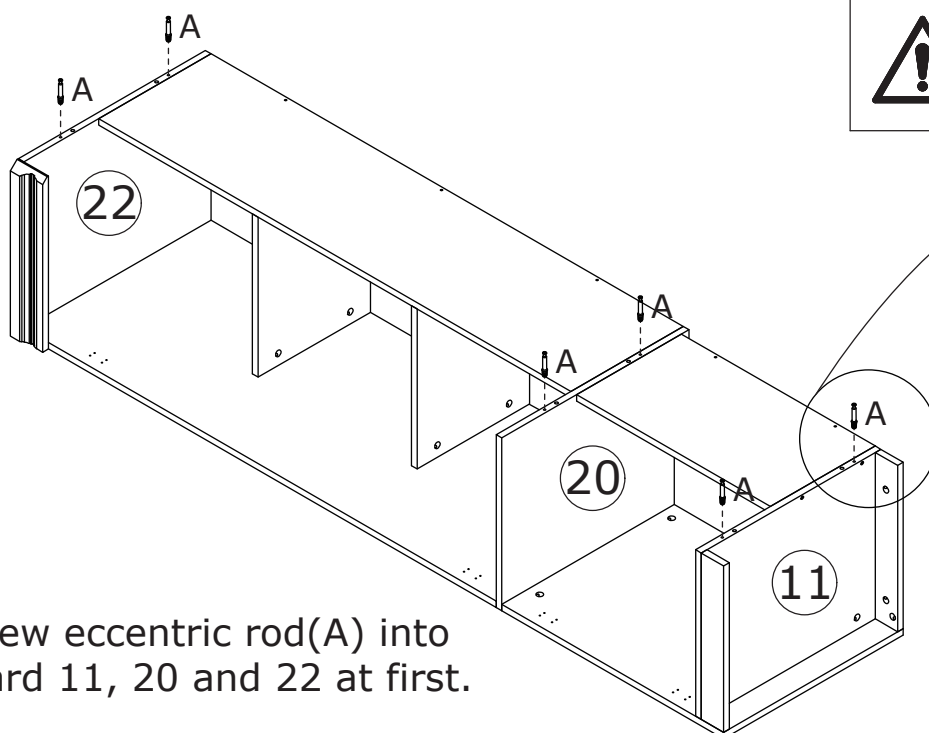
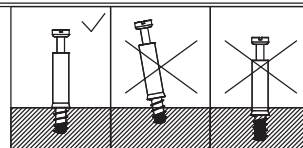
Attach board 27 to board 22, add cam lock(B) into board 22 and turn clockwise to tighten as shown.

29

A x 6



CRA0635A



Screw eccentric rod(A) into board 11, 20 and 22 at first.

30

B x 6

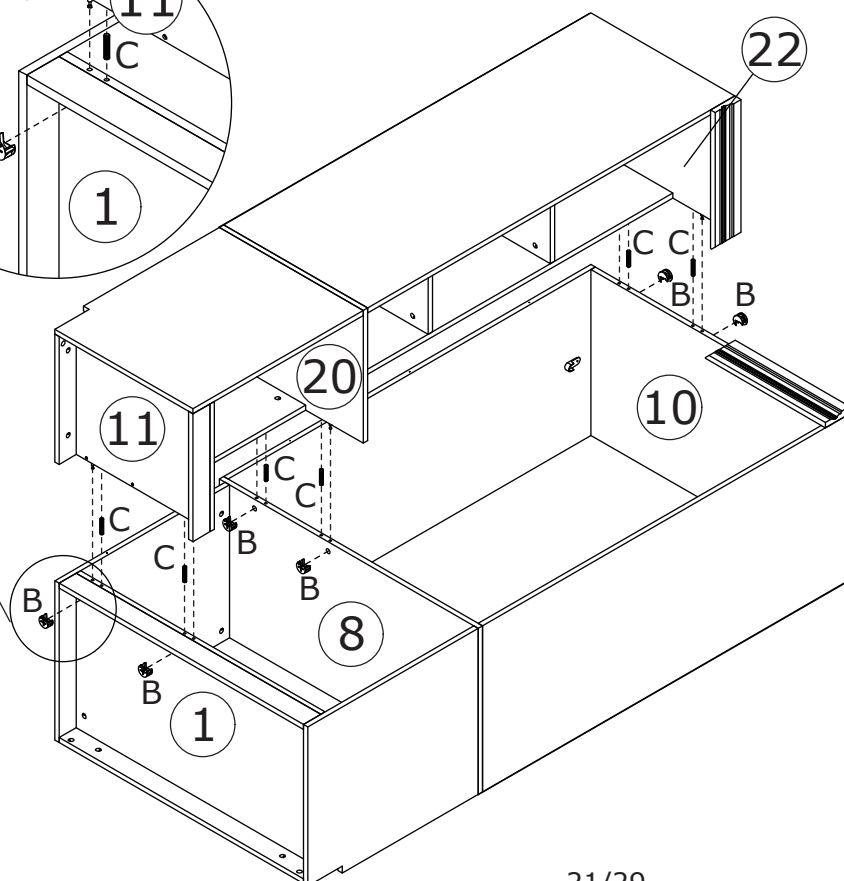
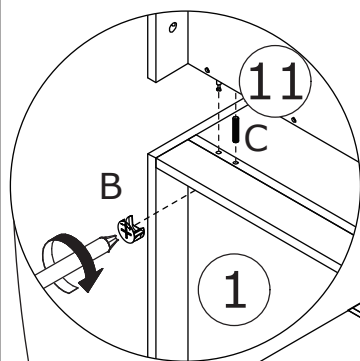
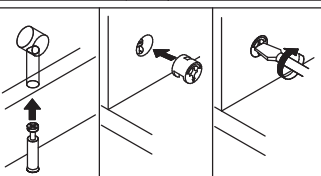
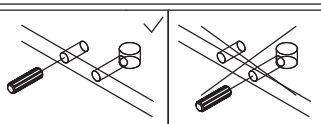
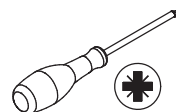
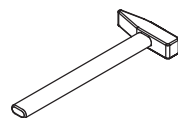


CRB1595B

C x 6

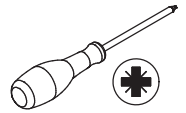
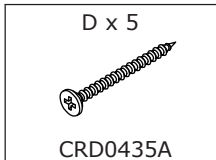


CRF0830A

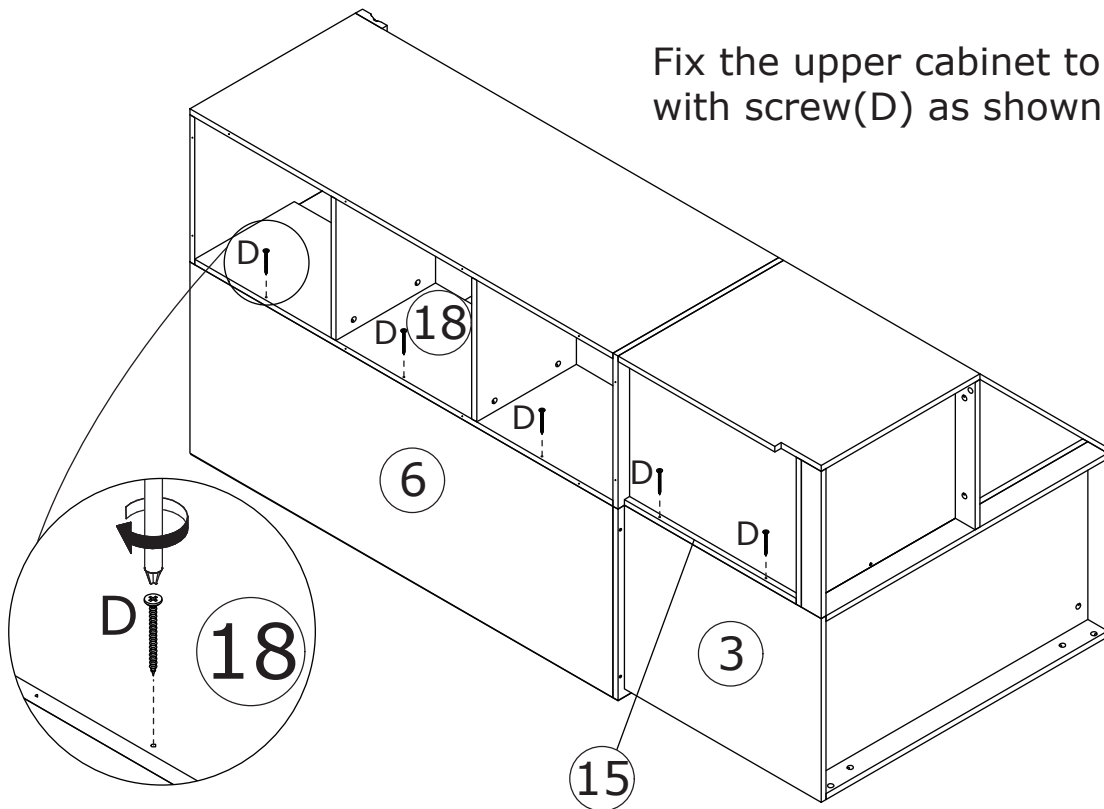


Connect the two assembled components using wooden dowel(C), add cam lock(B) into board 1,8,10 and turn clockwise to tighten as shown.

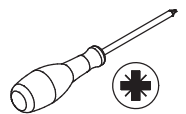
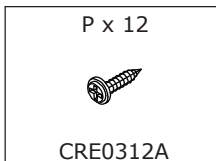
31



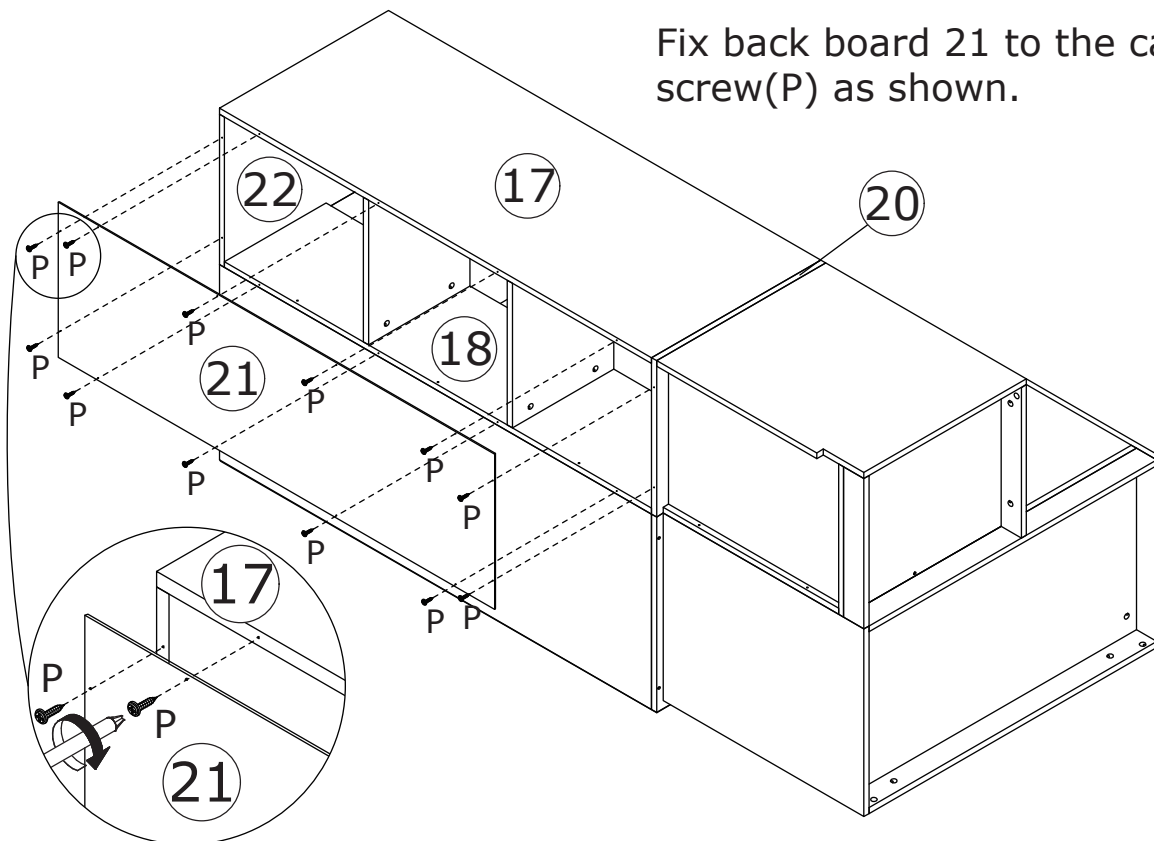
Fix the upper cabinet to lower cabinet with screw(D) as shown.



32



Fix back board 21 to the cabinet with screw(P) as shown.



33

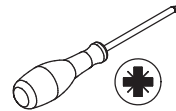
M x 18



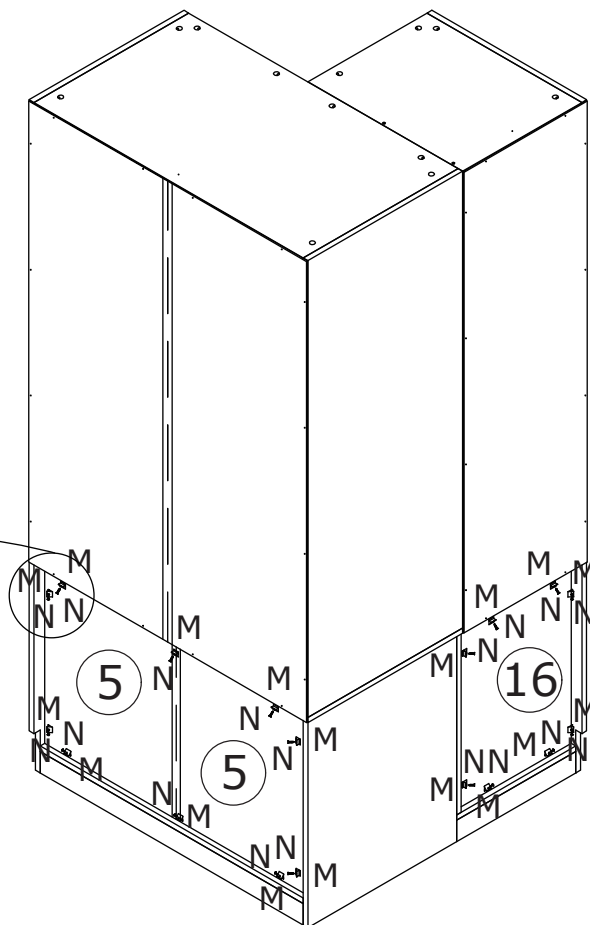
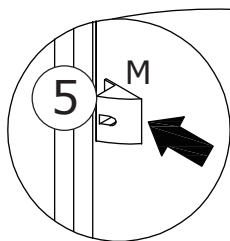
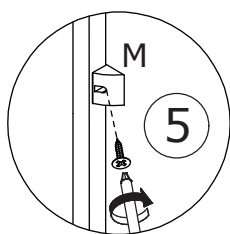
N x 18



CRD0316A



Insert buckle(M) into back slots and fix with screw(N) as shown.



34

G x 2

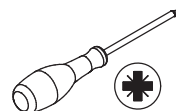


Ø35

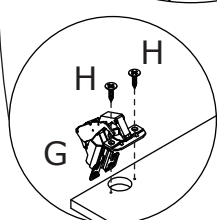
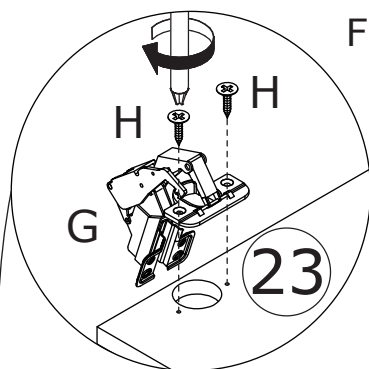
H x 4



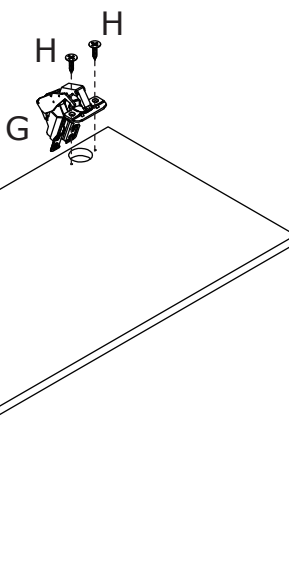
CRD3514A



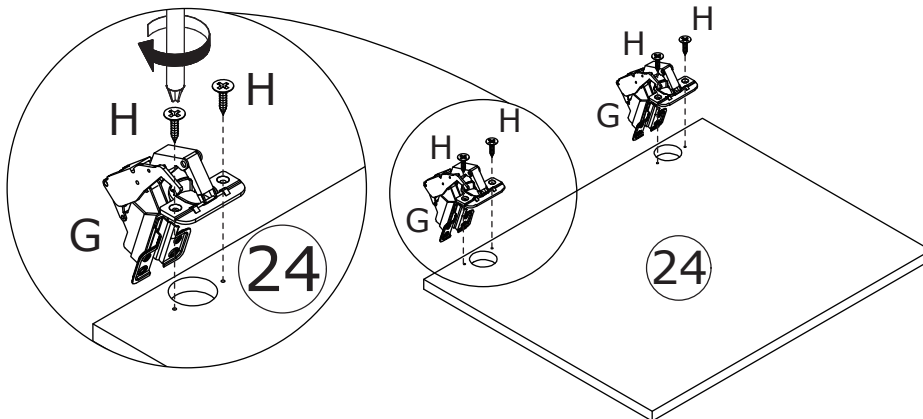
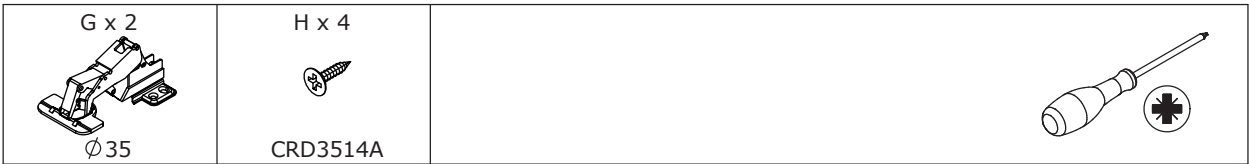
Fix hinge(G) to board 23 with screw(H) as shown.



23

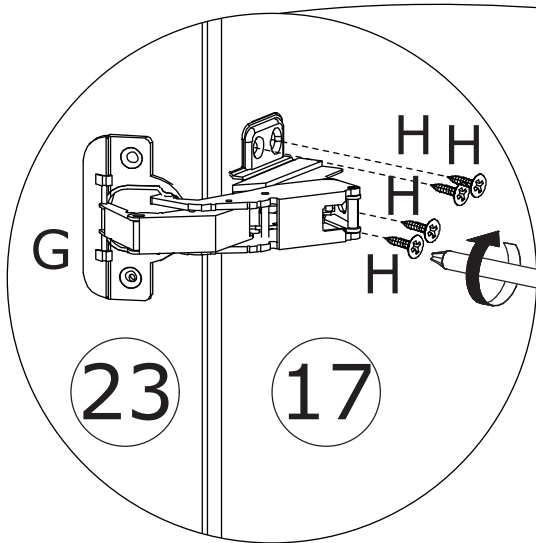


35

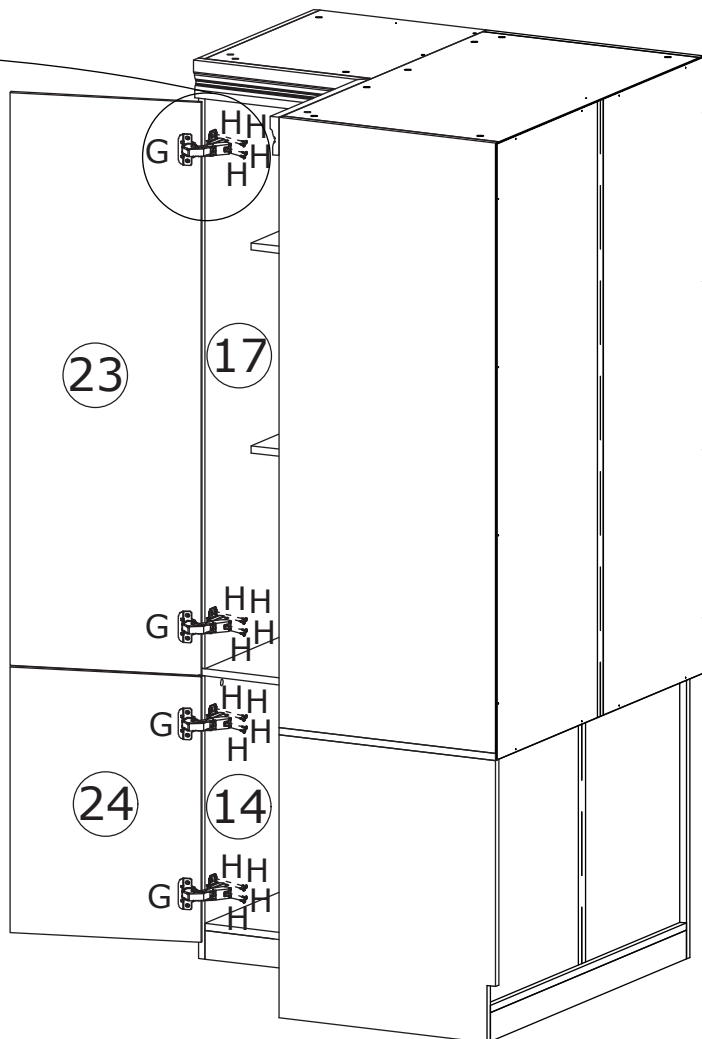


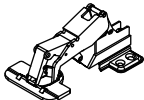

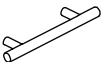

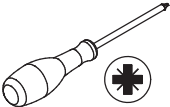
Fix hinge(G) to board 24 with screw(H) as shown.

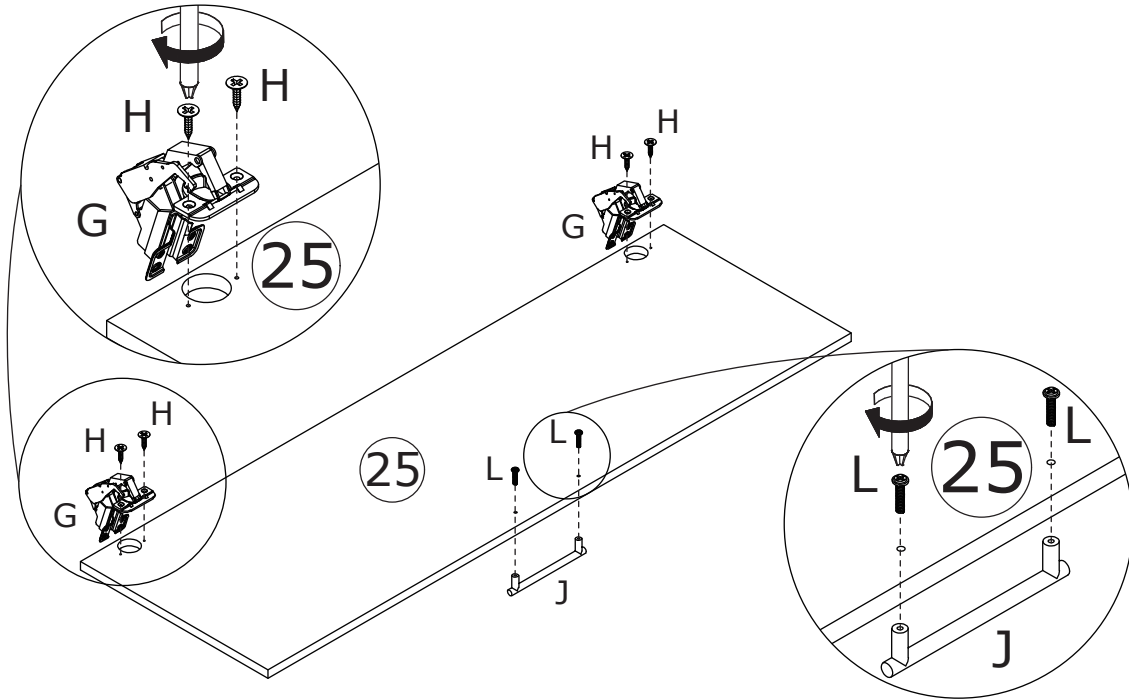
36



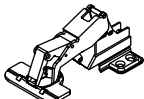



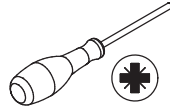
Assemble door 23 and 24 to board 17 and 14 by fixing hinge with screw(H) as shown.

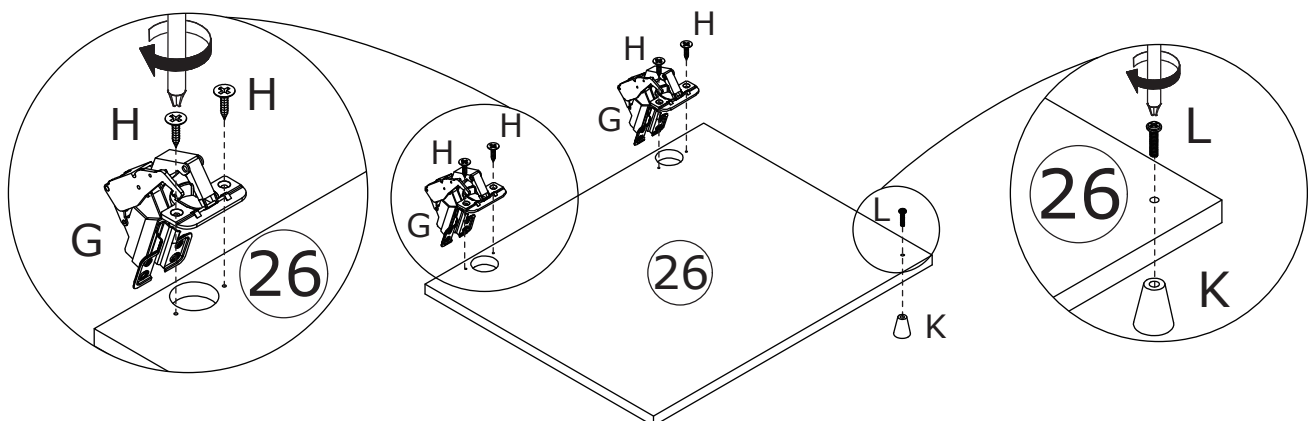


37	$G \times 2$  $\varnothing 35$	$H \times 4$  CRD3514A	$J \times 1$  150 mm	$L \times 2$  CRE0418A	
-----------	---	---	---	--	---



Fix hinge(G) to board 25 with screw(H) and fix handle(J) with screw(L).

38	$G \times 2$  $\varnothing 35$	$H \times 4$  CRD3514A	$K \times 1$  20 x 23 mm	$L \times 1$  CRE0418A	
-----------	---	---	---	--	---



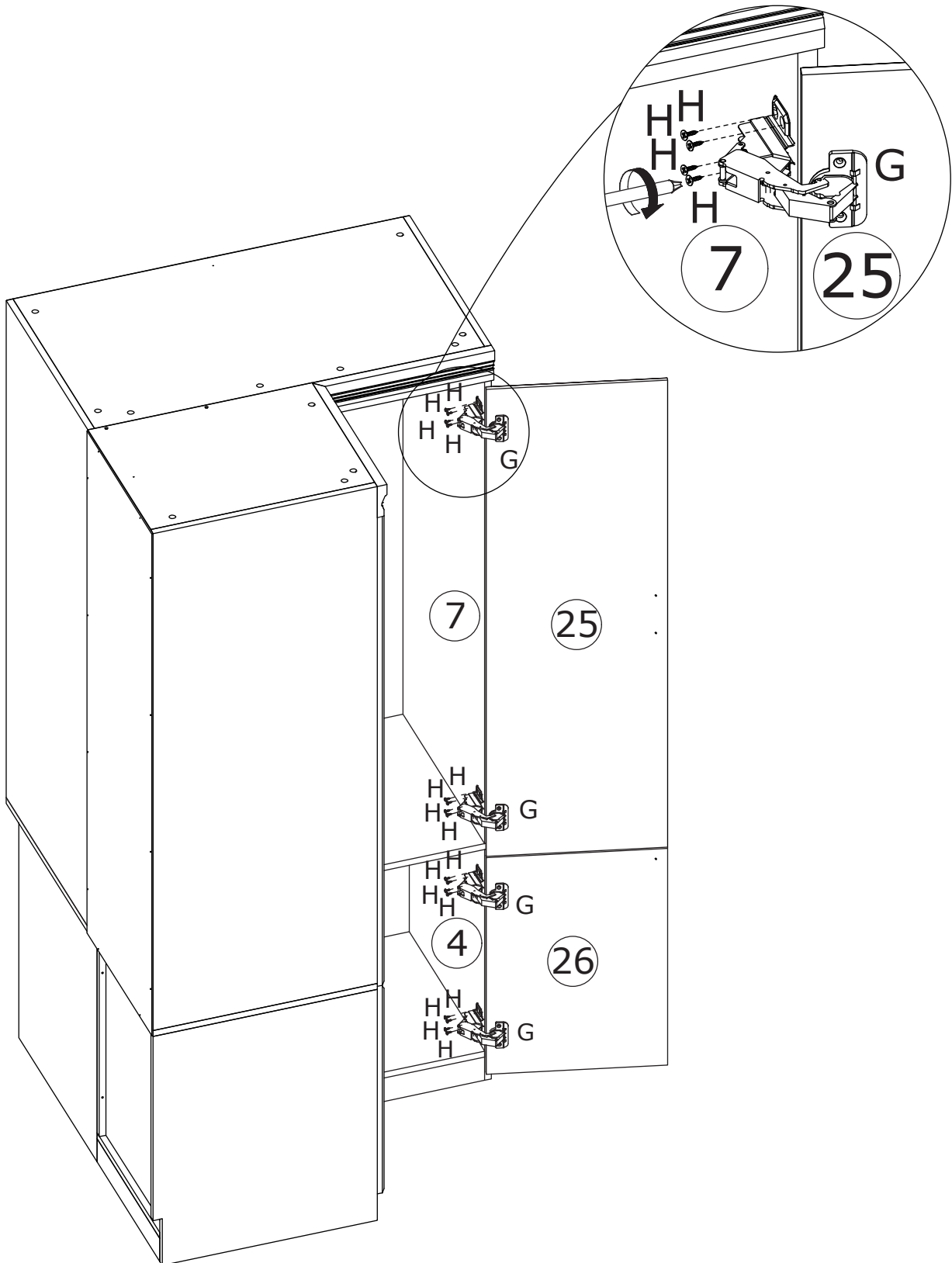
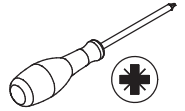
Fix hinge(G) to board 26 with screw(H) and fix knob(K) with screw(L).

39

H x 16



CRD3514A



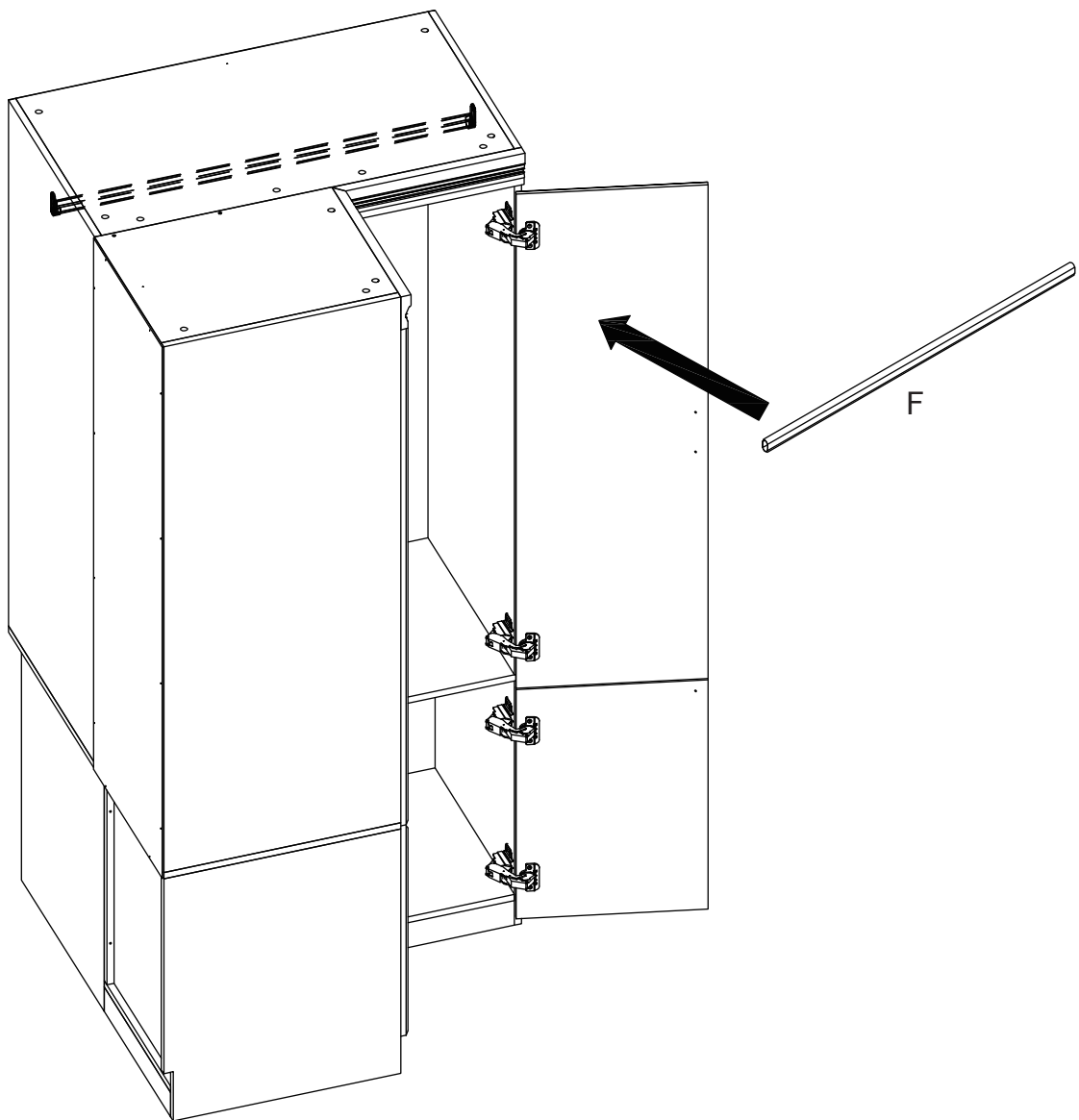
Assemble door 25 and 26 to board 7 and 4 by fixing hinge with screw(H) as shown.

40

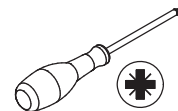
F x 1



L=862 mm



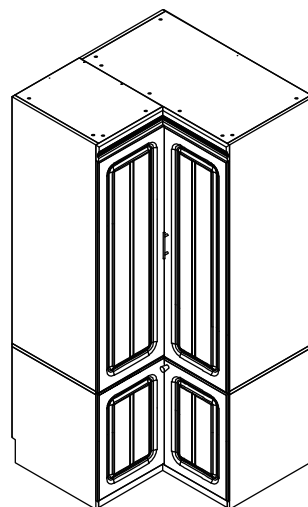
Place clothing rod(F) on the hook.



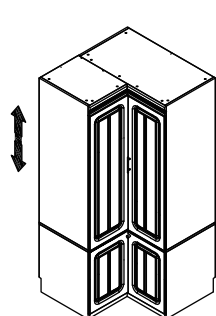
If there is misalignment after you install, adjust the screw to the best condition.

If doors are still not aligned if the hinges are properly correctly, please watch the video.

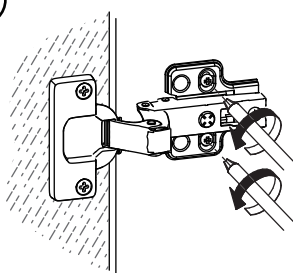
<https://youtu.be/n0Lb36SoODM>



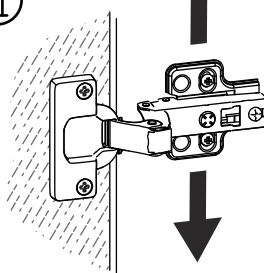
Up & Down Adjustment



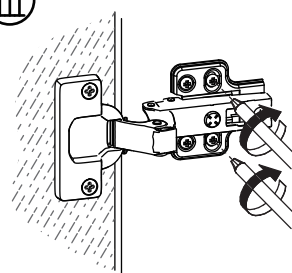
①



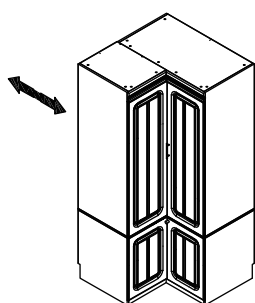
②



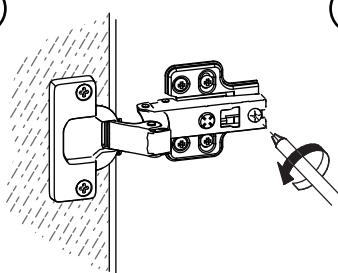
③



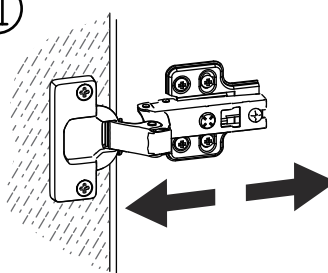
Left & Right Adjustment



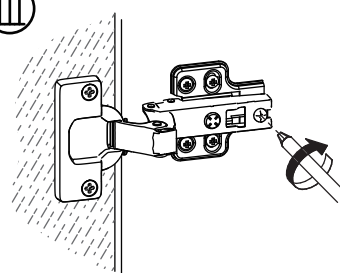
①



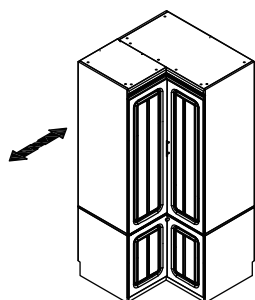
②



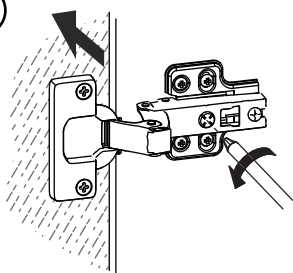
③



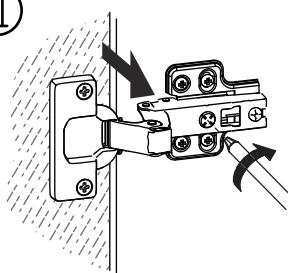
Forward & Back Adjustment



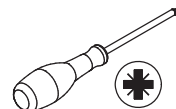
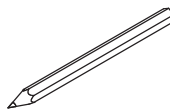
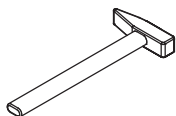
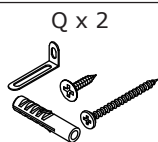
①



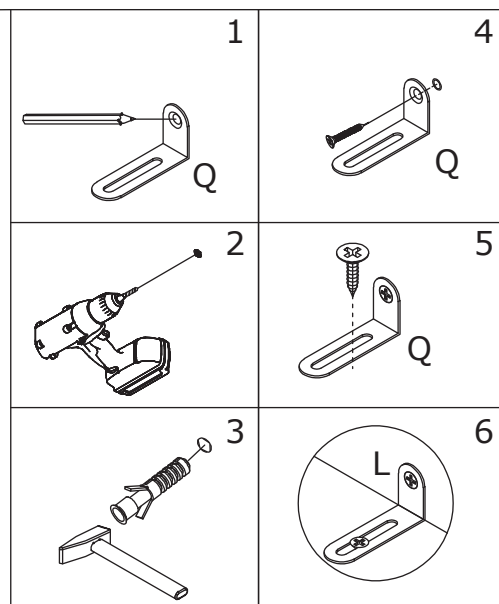
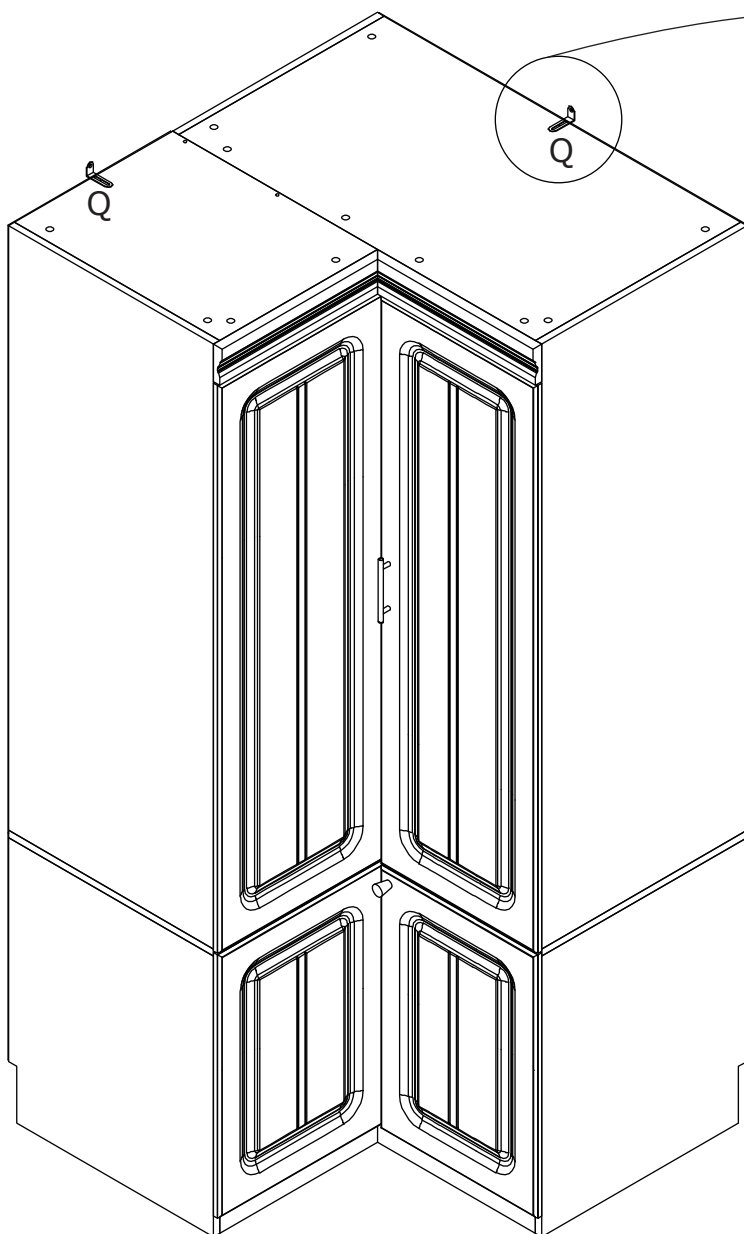
②



42



Install anti-tipping device as shown.



WARRANTY

WARRANTY CLAIMS

- There is a 30-day warranty for broken furniture or any other problems that do not work properly. The warranty will start from the date of purchase which must be verified by proof of purchase.
- Before making a claim, we may be able to answer your query, simply call us. Please leave your purchase order number, along with some details of the problem, if you want a replacement part. We will arrange within 48 hours. If there is out of stock, we will reply with a shipping date.
- The product must be used in accordance with the instructions provided. For health reasons.
- For other reasons, if the furniture needs to be returned, it must be cleaned and dried and operated within 30 days of receipt.

Type of Warranty Claim

- Failure to follow the furniture instructions will invalidate the warranty. Attention please.
- Does not include damage during installation, but includes damage during transportation.

Scope of responsibility

- Shall not bear any responsibility for misuse or user damage and / or loss of parts during the installation of furniture.
- After using, the damage and scratches of the furniture are not covered by the warranty.

The Warranty Relates to All Bought in The Us and Covers The Following Areas

- Sheet parts: 1 month from the date of purchase.
- Electrical parts: 1 month from the date of purchase.

RETURNS

CHANGED YOUR MIND AND NEED TO RETURN YOUR ITEM?

PLEASE FOLLOW THE BELOW INSTRUCTIONS:

- If you have purchased and have simply changed your mind, follow the retailer's instructions for returns.

DEFECTIVE ITEMS

- If your item is defective in any way, i.e. it doesn't work but you can't identify why, in the first instance, please call us.

DAMAGED ITEMS

- If you receive an order with obvious shipping damage from the retailer, then we suggest the delivery is refused. If the delivery has been accepted and then shipping damage is found, please follow the specific instructions advised by the retailer.
In all circumstances please save all packaging material and paperwork for the order. Please be aware that if you dispose of packaging material or attempt to return the merchandise without contacting the fulfiller, you jeopardise your chances of making a claim, and you may not receive a credit for the return.

AFTER-SALES CONTACT



feedbackstation@163.com

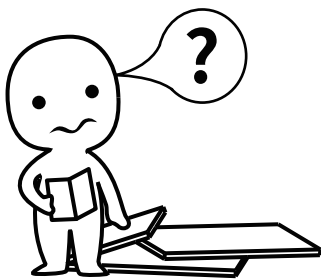


(303)800-6387

INSTALLATION

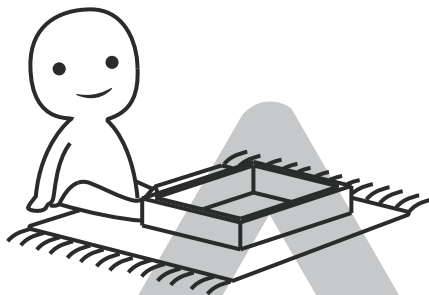
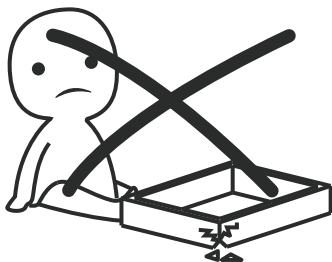
Product Manual

Version: 250023-06-24A-MH



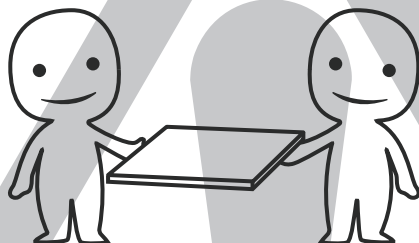
IMPORTANT INFORMATION!

please read the entire manual before starting to assemble and/or using this product. follow the manual thoroughly and keep it for further reference.



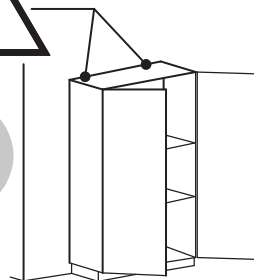
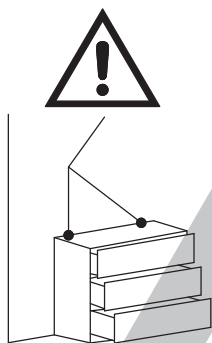
AVOID SCRATCHES!

In order to avoid scratching this furniture should be assembled on a soft layer-could be a rug.



IMPROVE EFFICIENCY !

Try to find a partner to install with you, which can speed up the installation efficiency and shorten the time.



ANTI-TOPPLE WARNING !

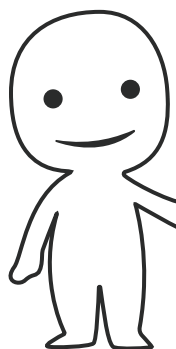
Overturned furniture can cause serious or fatal crush injuries. To prevent tipping over, be sure to use the wall attachment, if not included with this product. Please purchase the wall attachment that fit your wall. If unsure, seek professional advice. Please read and follow each step of the instructions carefully.

IMPORTANT !

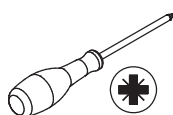
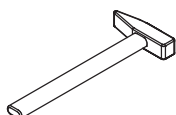
It is important that any product which is assembled using any kind of screw is re-tightened 2 weeks after assembly, and once every 3 months - in order to assure stability through-out the lifespan of the product.

For regular maintenance and cleaning of the product, for the frame, please use a rag dipped in neutral detergent to fully wipe it, and then dry it with a clean rag. For glass materials, wipe with a rag dampened with water glass cleaner, and then dry with a dry rag.

Do not use an electric screwdriver, and do not use too much force when installing, because the board is easy to break.

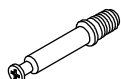


Please prepare the following tools



When installing, please carefully confirm whether each screw corresponds to the manual, accessories with similar shapes can be distinguished by size

A x 24



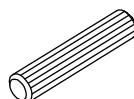
CRA0635A

B x 24



CRB1595A

C x 20



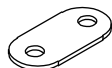
CRF0830A

D x 24



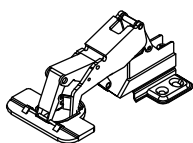
CRE0312A

E x 2



28 x 14 mm

F x 4



∅ 35

G x 28



CRD3514A

H x 1



∅ 20 x 23 mm

J x 1

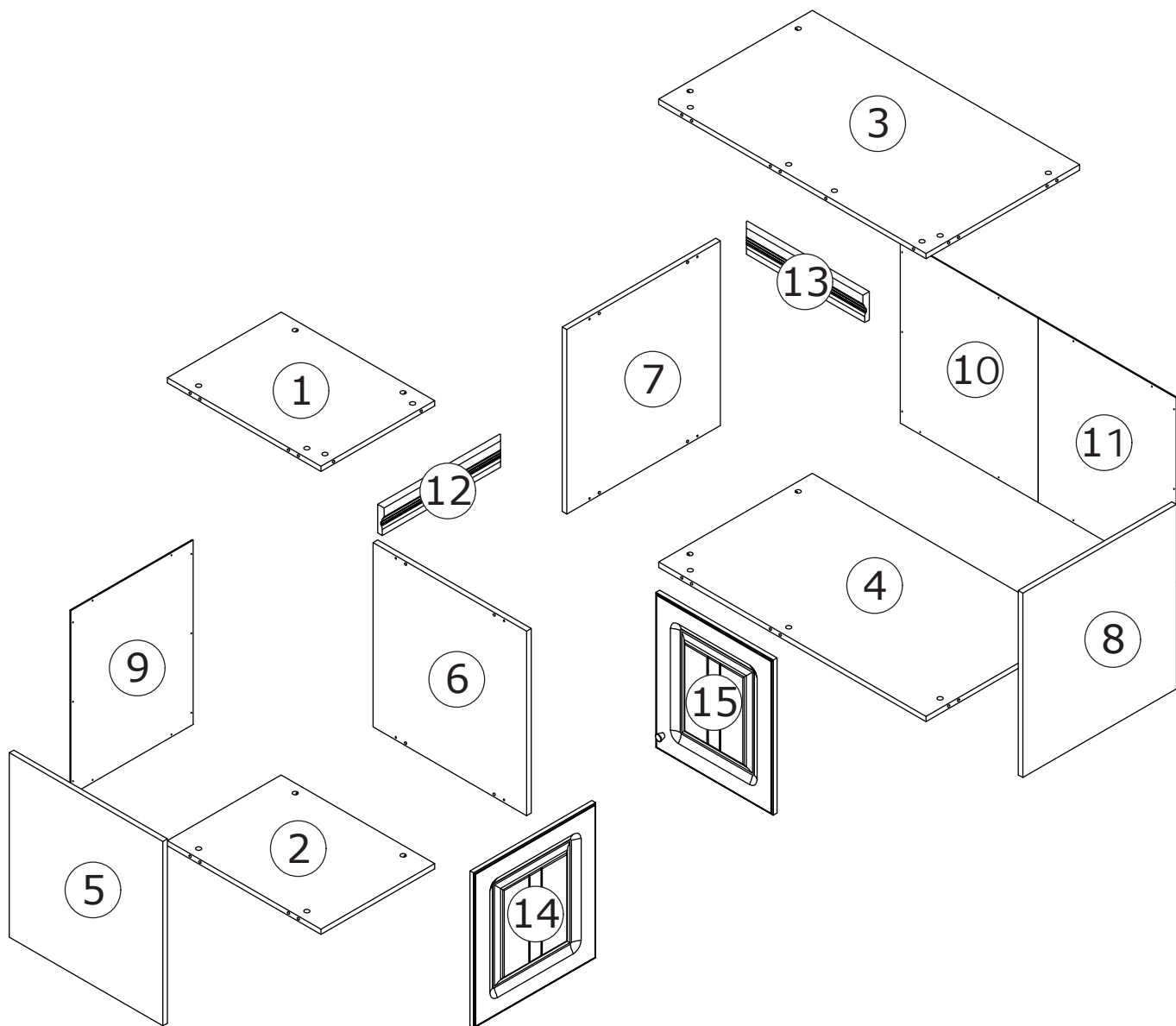


CRE0418A

K x 10



∅ 25



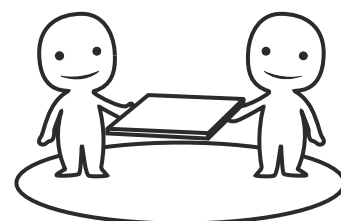
⚠ WARNING



Children have died from furniture tipover. To reduce the risk of furniture tipover:

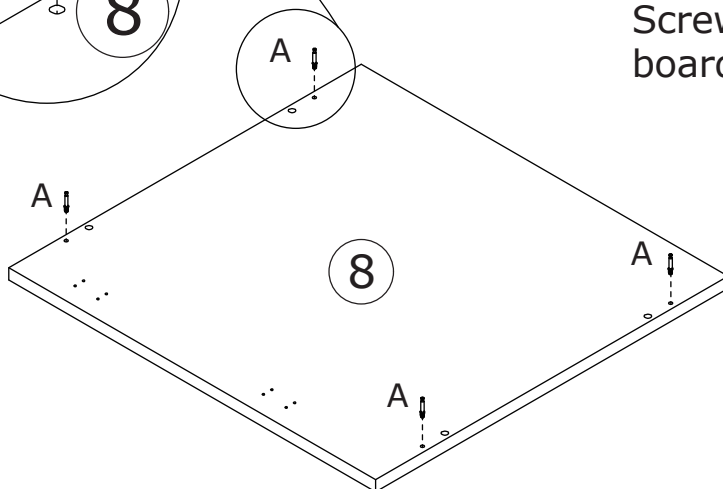
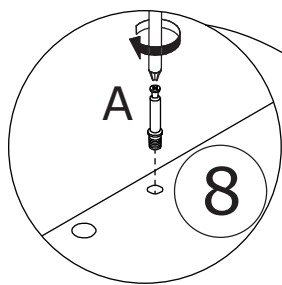
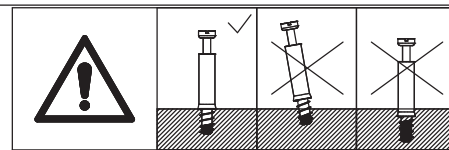
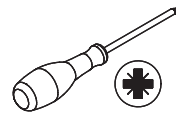
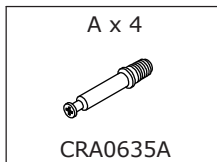
- ALWAYS install Anti-tip device provided.
- NEVER put a TV on this product.
- NEVER allow children to stand, climb or hang on drawers, doors, or shelves.
- NEVER open more than one drawer at a time.
- Place heaviest items in the lowest drawers.

*This is a permanent label.
Do not remove!*



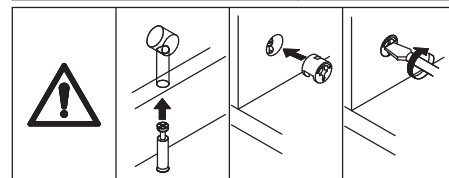
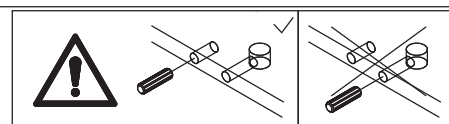
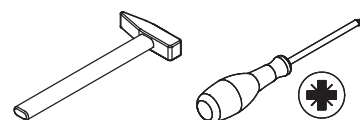
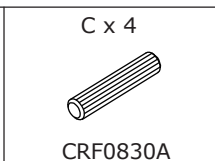
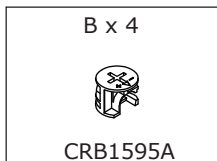
ASSEMBLED BY 2 ADULTS

1

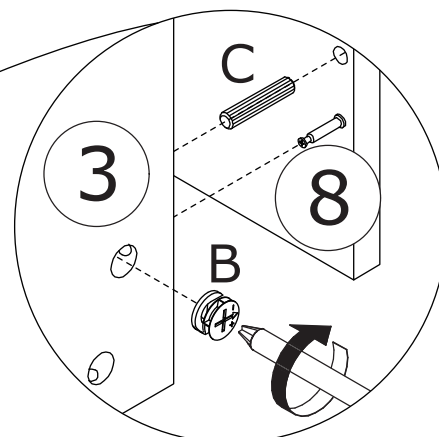
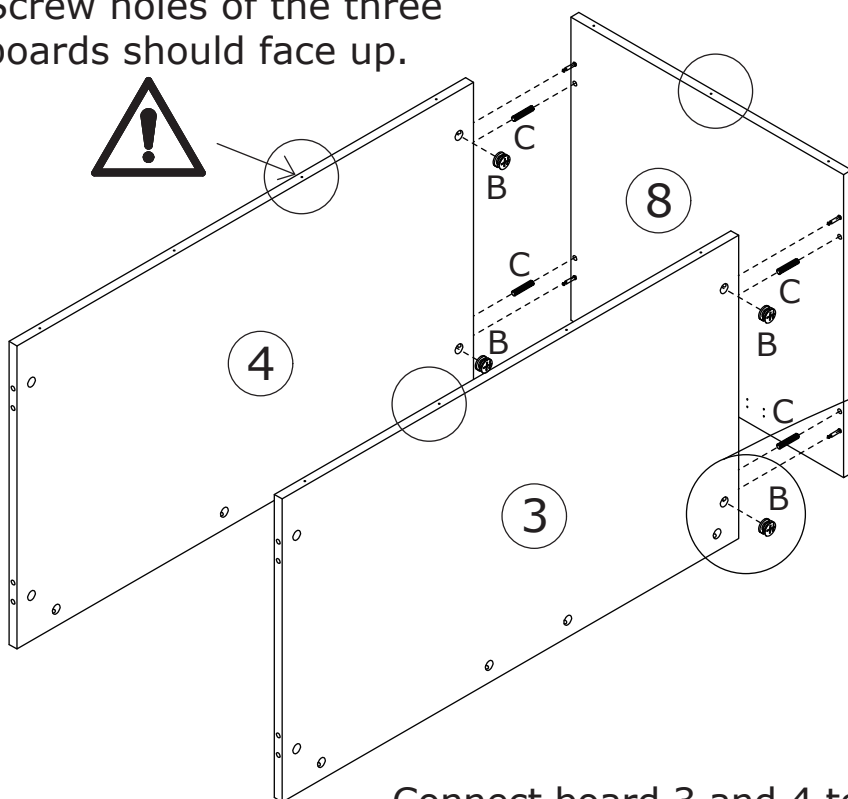


Screw eccentric rod(A) into board 8 at first.

2

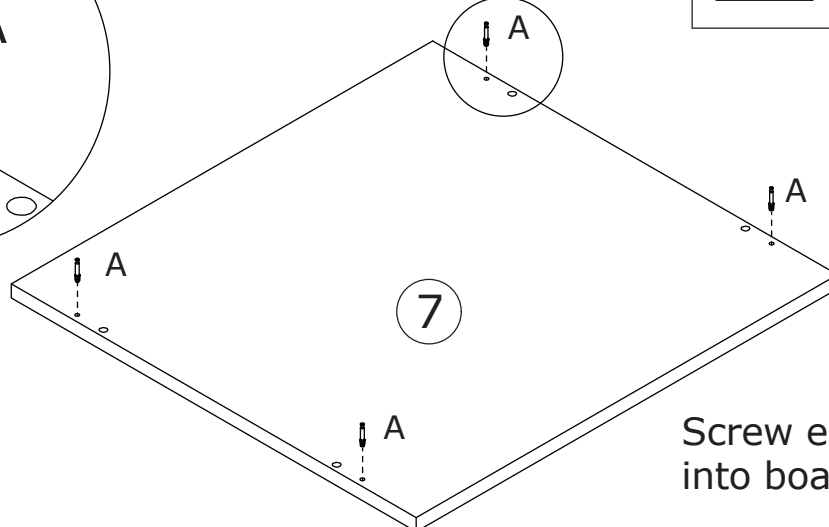
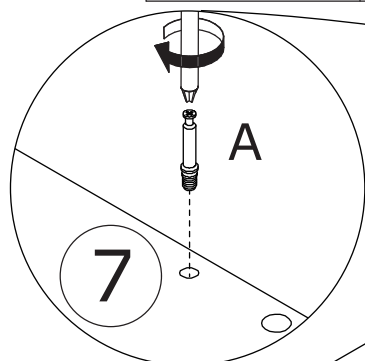
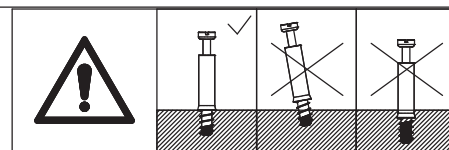
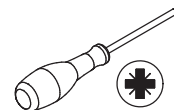
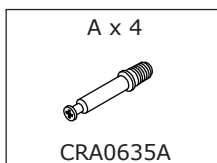


Screw holes of the three boards should face up.



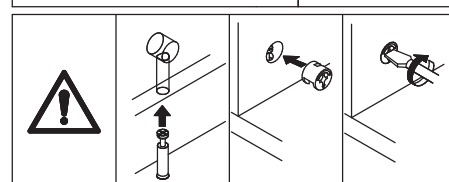
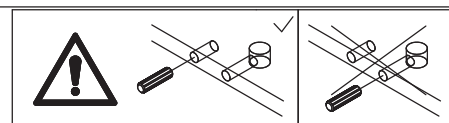
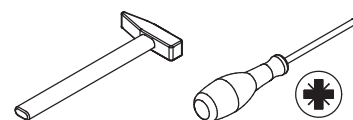
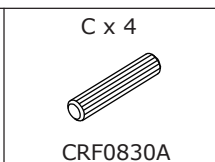
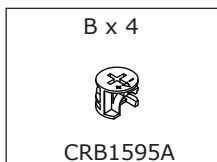
Connect board 3 and 4 to board 8 using wooden dowel(C), add cam lock(B) into board 3,4 and turn clockwise to tighten as shown.

3

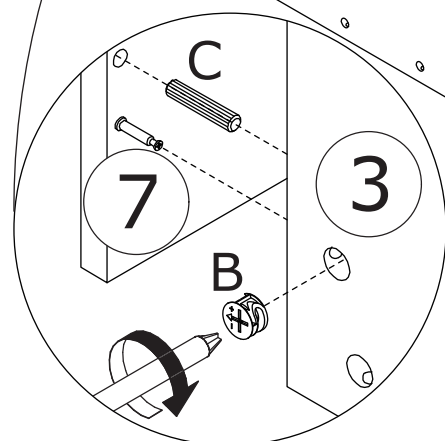
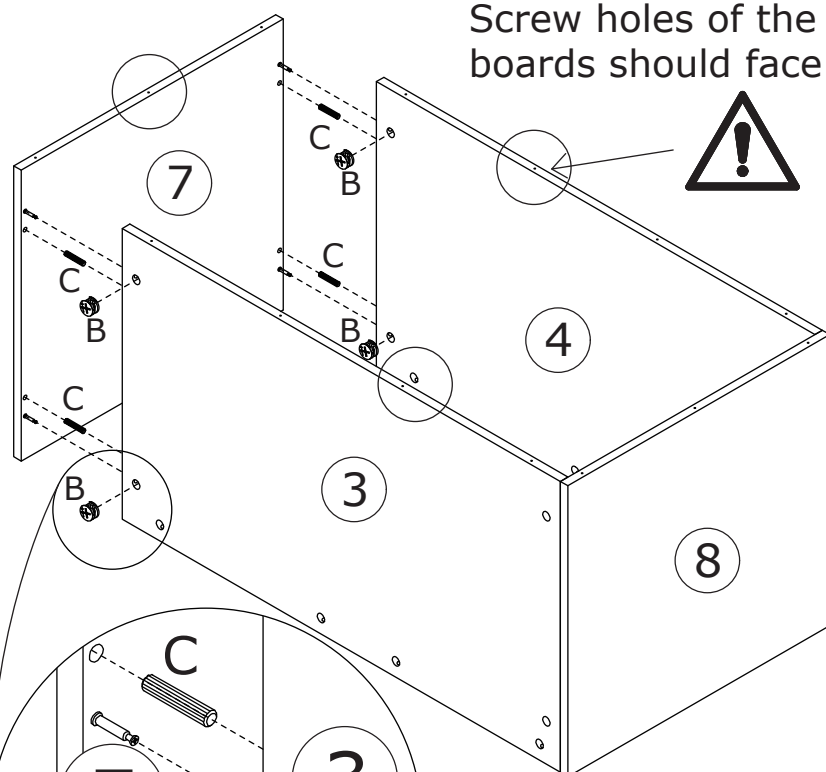


Screw eccentric rod(A)
into board 7 at first.

4



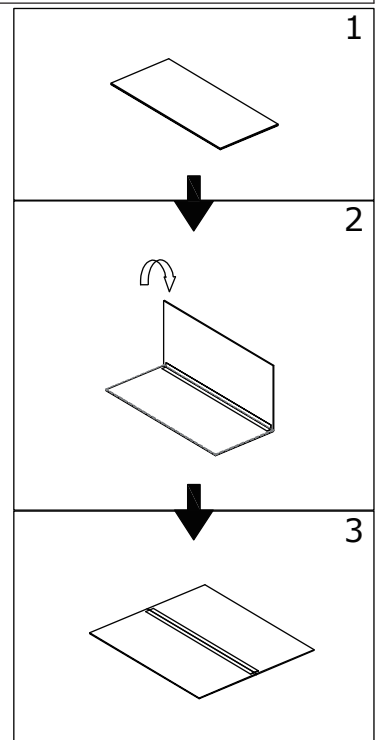
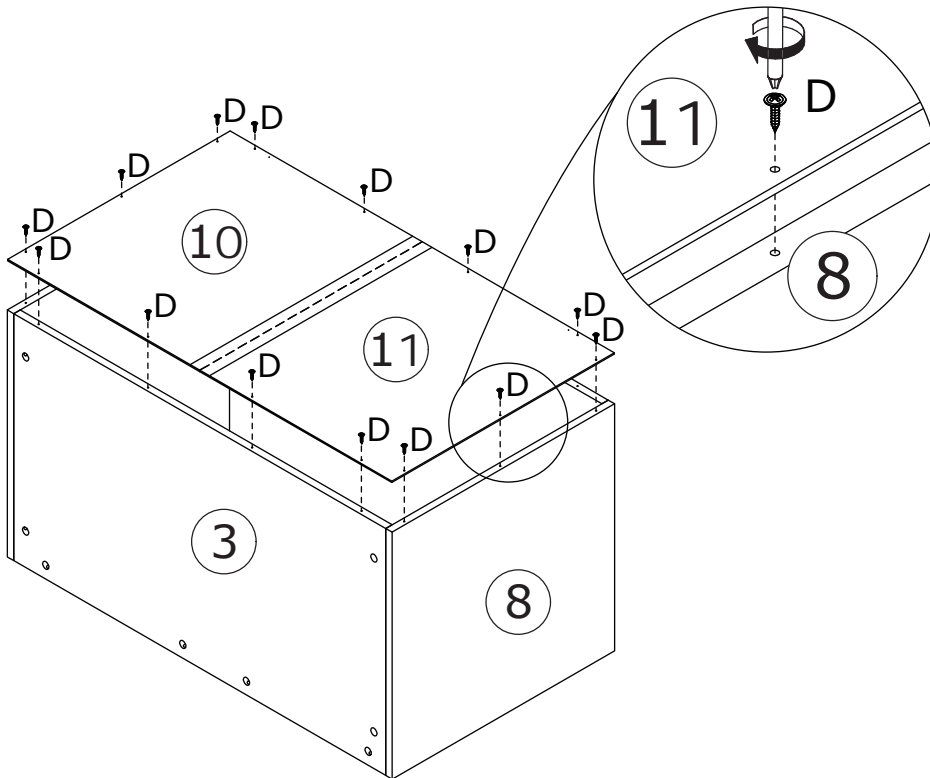
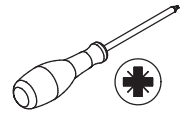
Screw holes of the four
boards should face up.



Connect board 3 and 4 to board 7 using
wooden dowel(C), add cam lock(B) into
board 3,4 and turn clockwise to tighten
as shown.

5

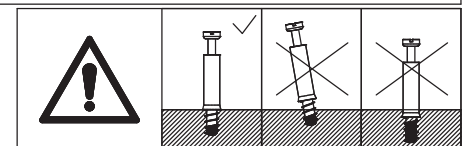
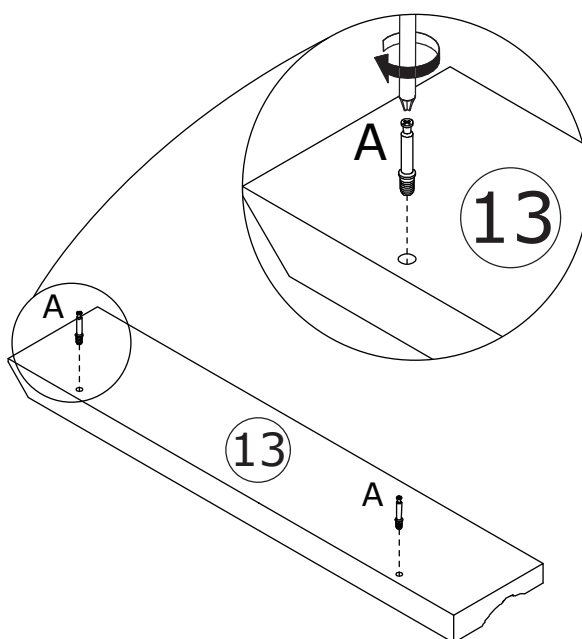
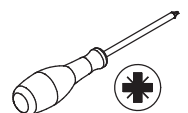
D x 14
CRE0312A



Fix back board 10 and 11 to the component with screw(D) as shown.

6

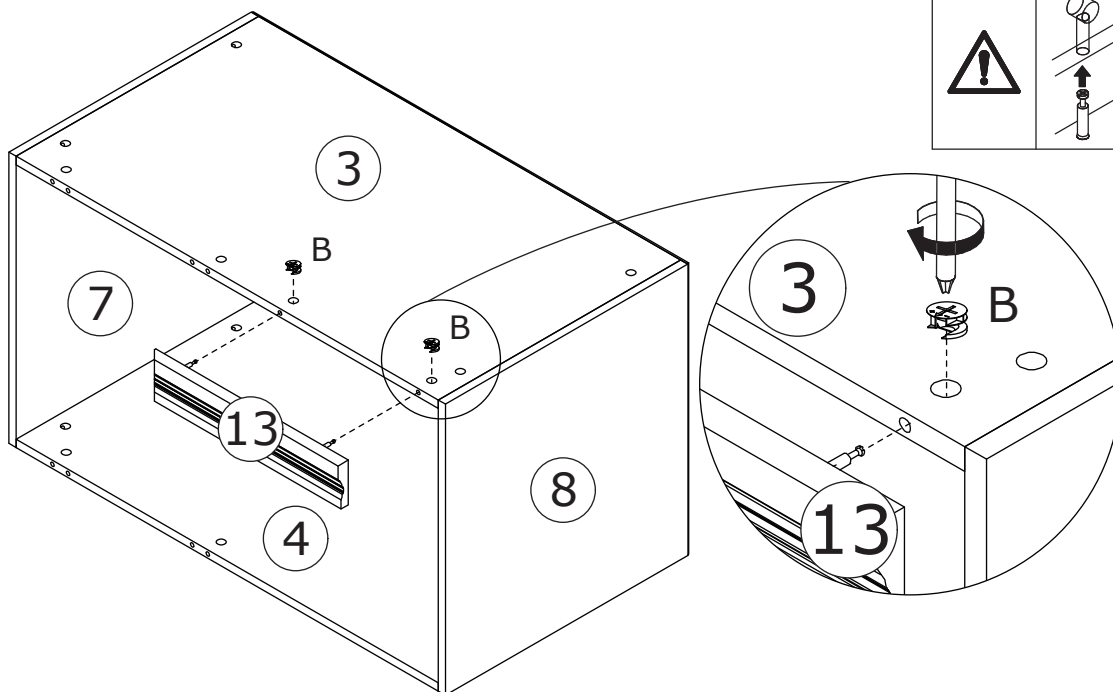
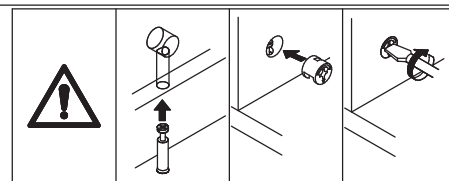
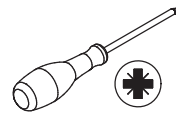
A x 2
CRA0635A



Screw eccentric rod(A) into board 13 at first.

7

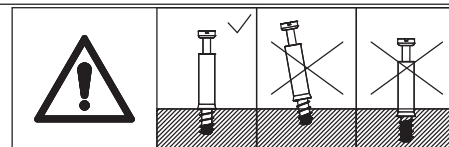
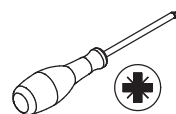
B x 2
CRB1595A



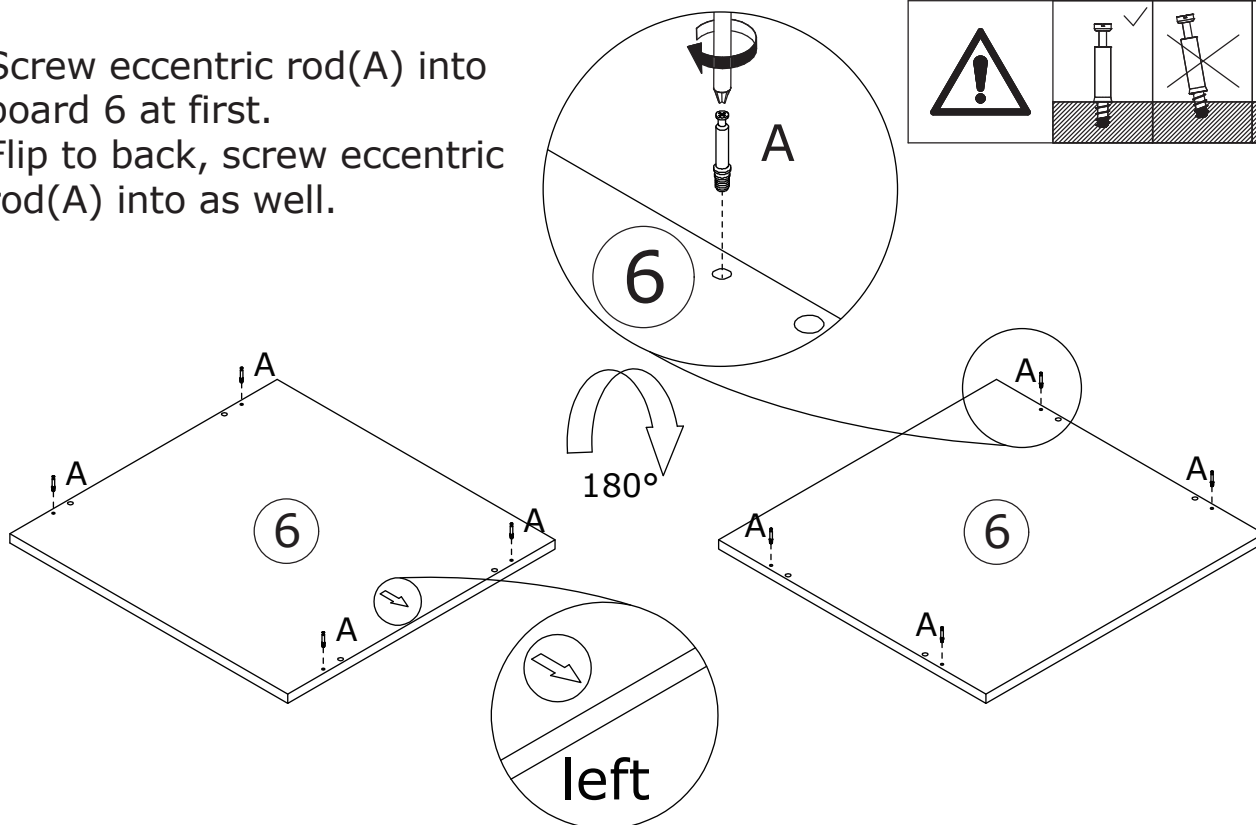
Attach board 13 to board 3, add cam lock(B) into board 3 and turn clockwise to tighten as shown.

8

A x 8
CRA0635A



Screw eccentric rod(A) into board 6 at first.
Flip to back, screw eccentric rod(A) into as well.



9

B x 4

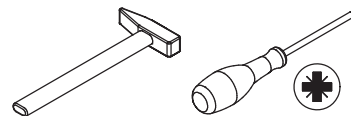


CRB1595A

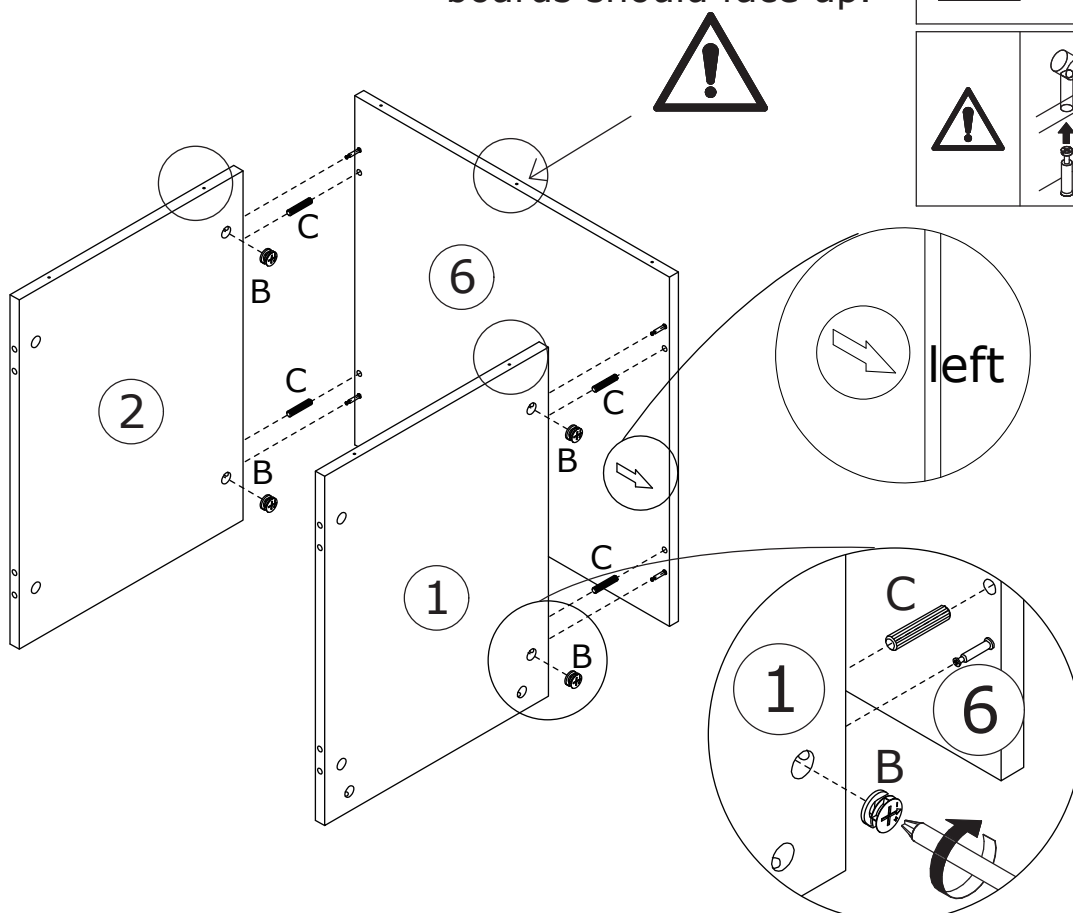
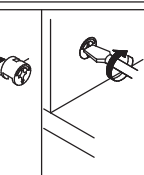
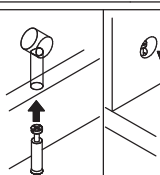
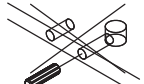
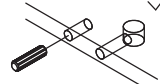
C x 4



CRF0830A



Screw holes of the three boards should face up.



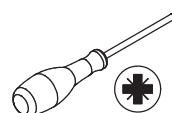
Connect board 1 and 2 to board 6 using wooden dowel(C), add cam lock(B) into board 1,2 and turn clockwise to tighten as shown.

10

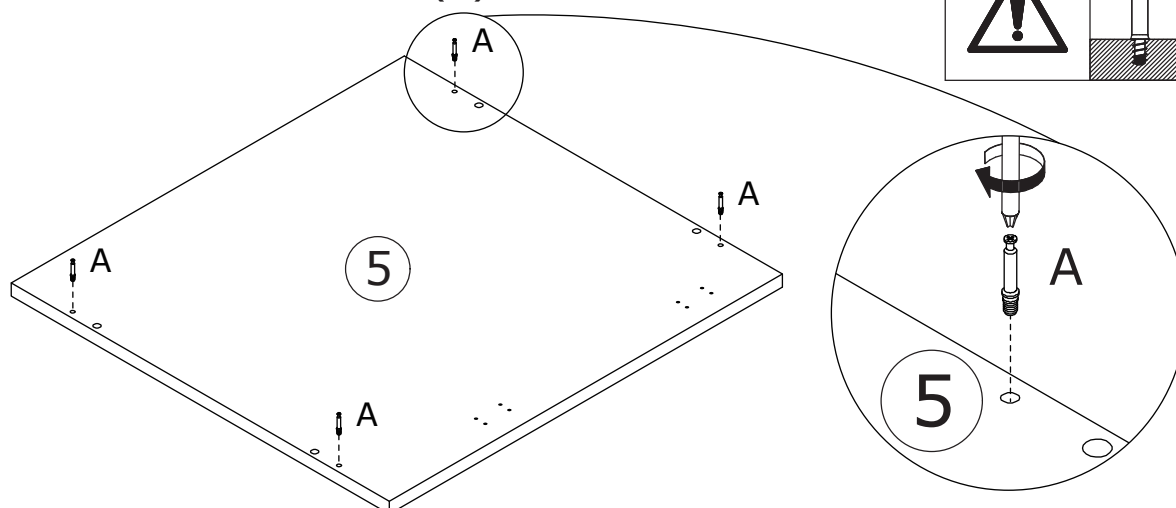
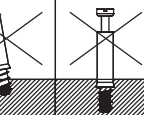
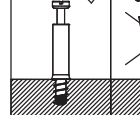
A x 4



CRA0635A



Screw eccentric rod(A) into board 5 at first.



11

B x 4

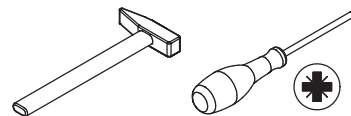


CRB1595A

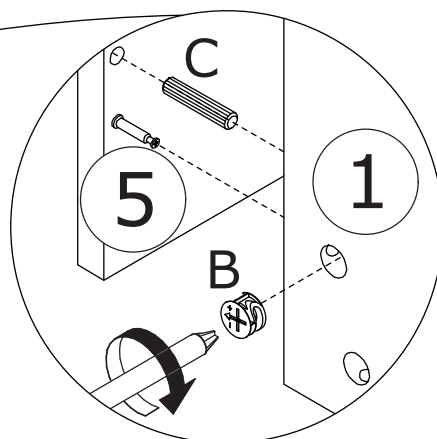
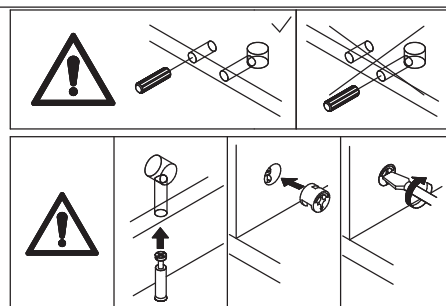
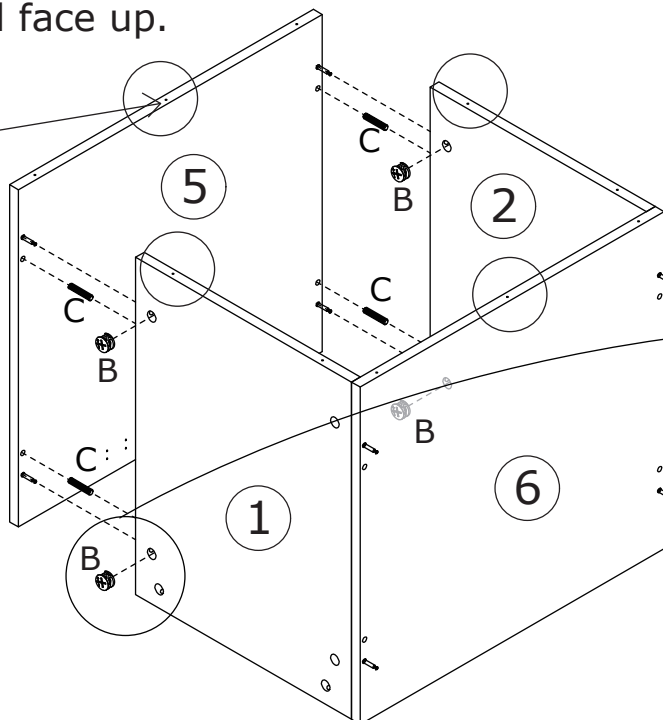
C x 4



CRF0830A



Screw holes of the four boards should face up.



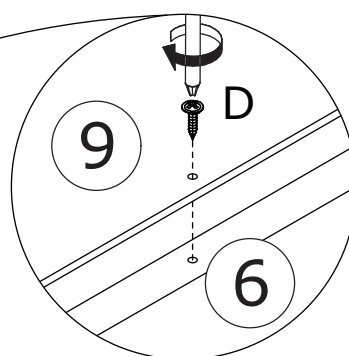
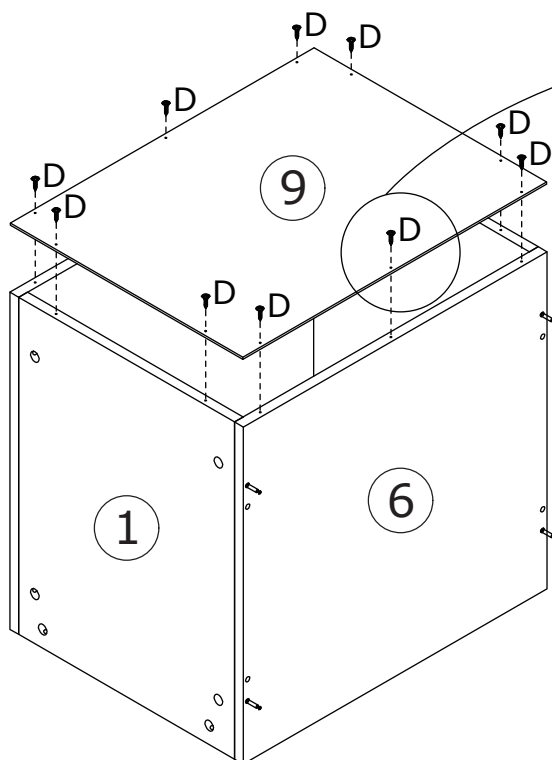
Connect board 5 to board 1 and 2 using wooden dowel(C), add cam lock(B) into board 1,2 and turn clockwise to tighten as shown.

12

D x 10



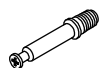
CRE0312A



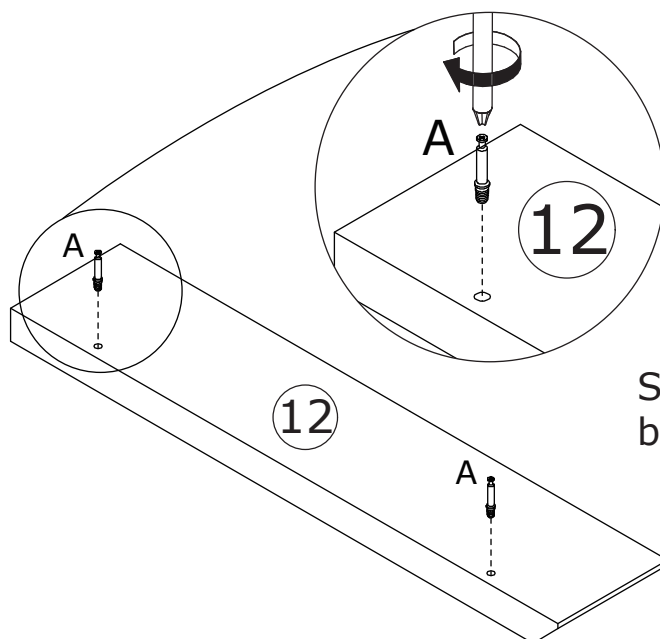
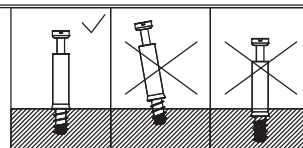
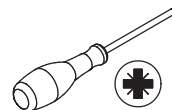
Fix back board 9 to the component with screw(D) as shown.

13

A x 2



CRA0635A



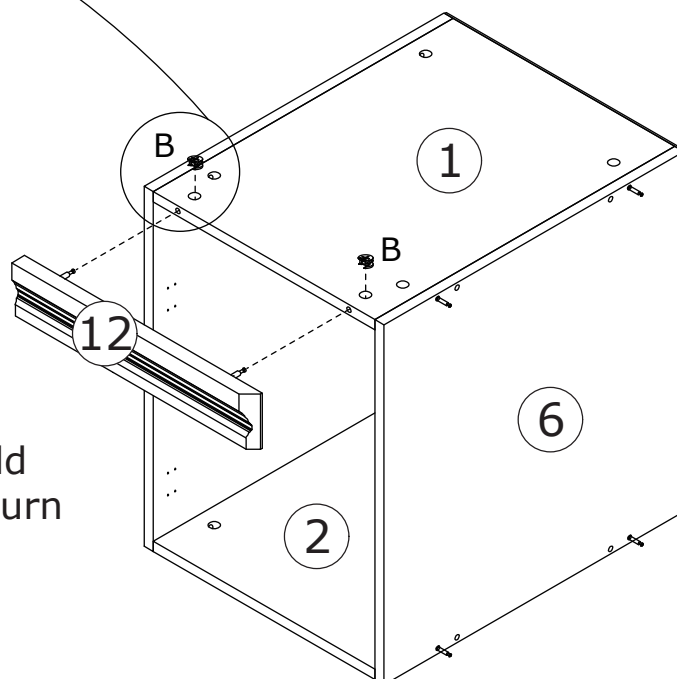
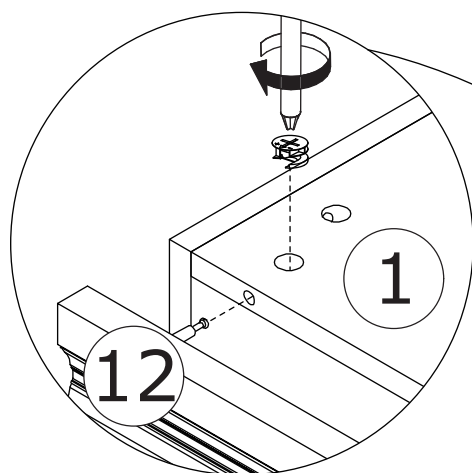
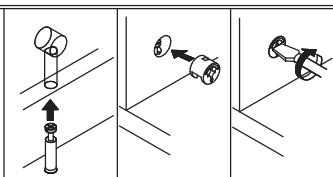
Screw eccentric rod(A) into board 12 at first.

14

B x 2



CRB1595A



Attach board 12 to board 1, add cam lock(B) into board 1 and turn clockwise to tighten as shown.

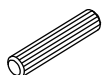
15

B x 4

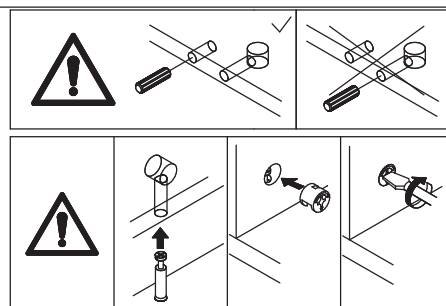
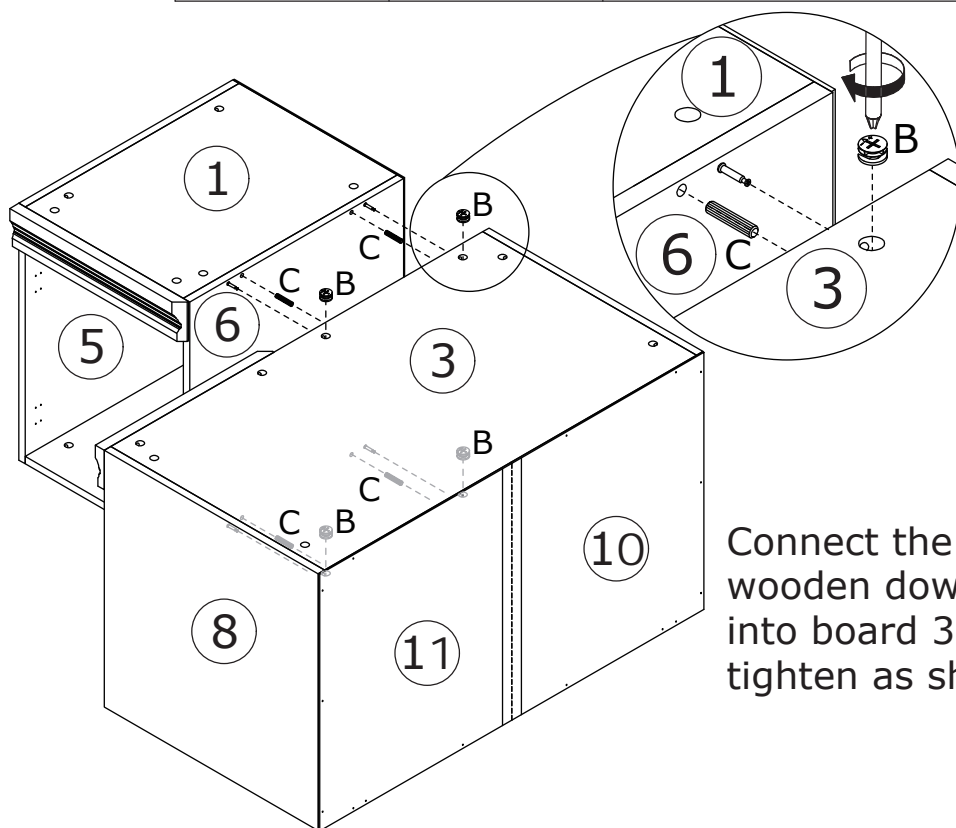
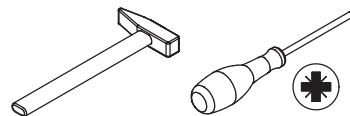


CRB1595A

C x 4



CRF0830A



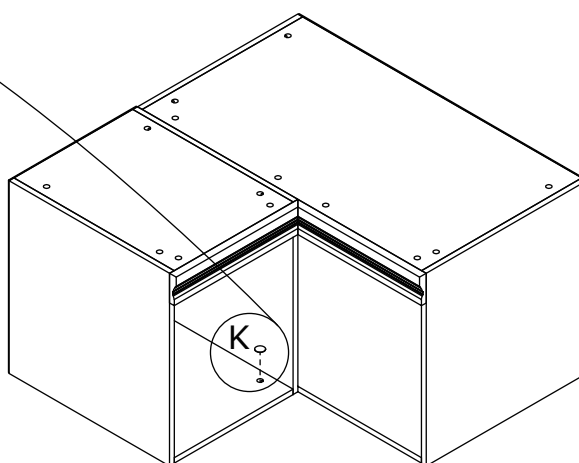
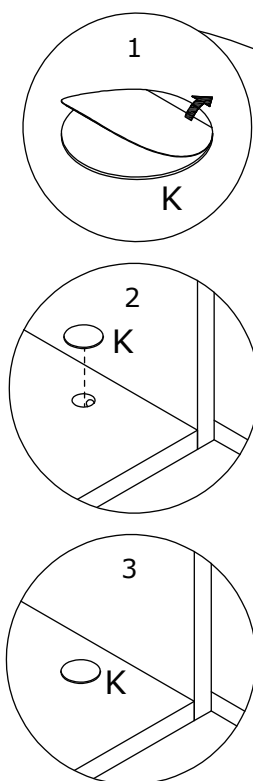
Connect the two components using wooden dowel(C), add cam lock(B) into board 3,4 and turn clockwise to tighten as shown.

16

K x 10

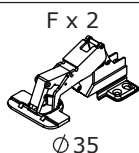


Ø25



Use sticker(K) to cover cam lock holes.

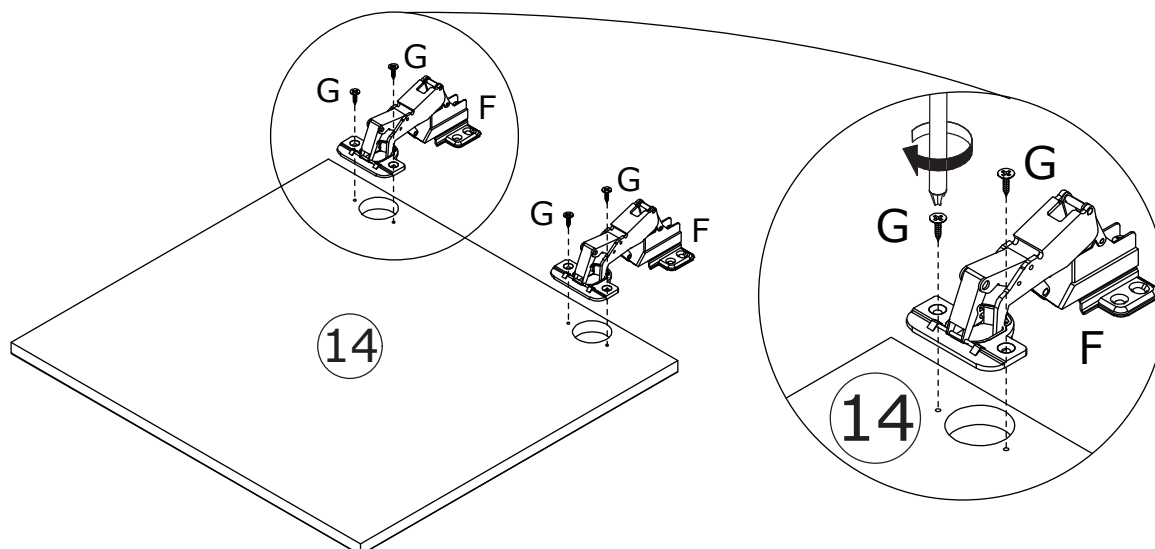
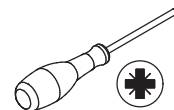
17



G x 4



CRD3514A



Fix hinge(F) to board 14 with screw(G) as shown.

18

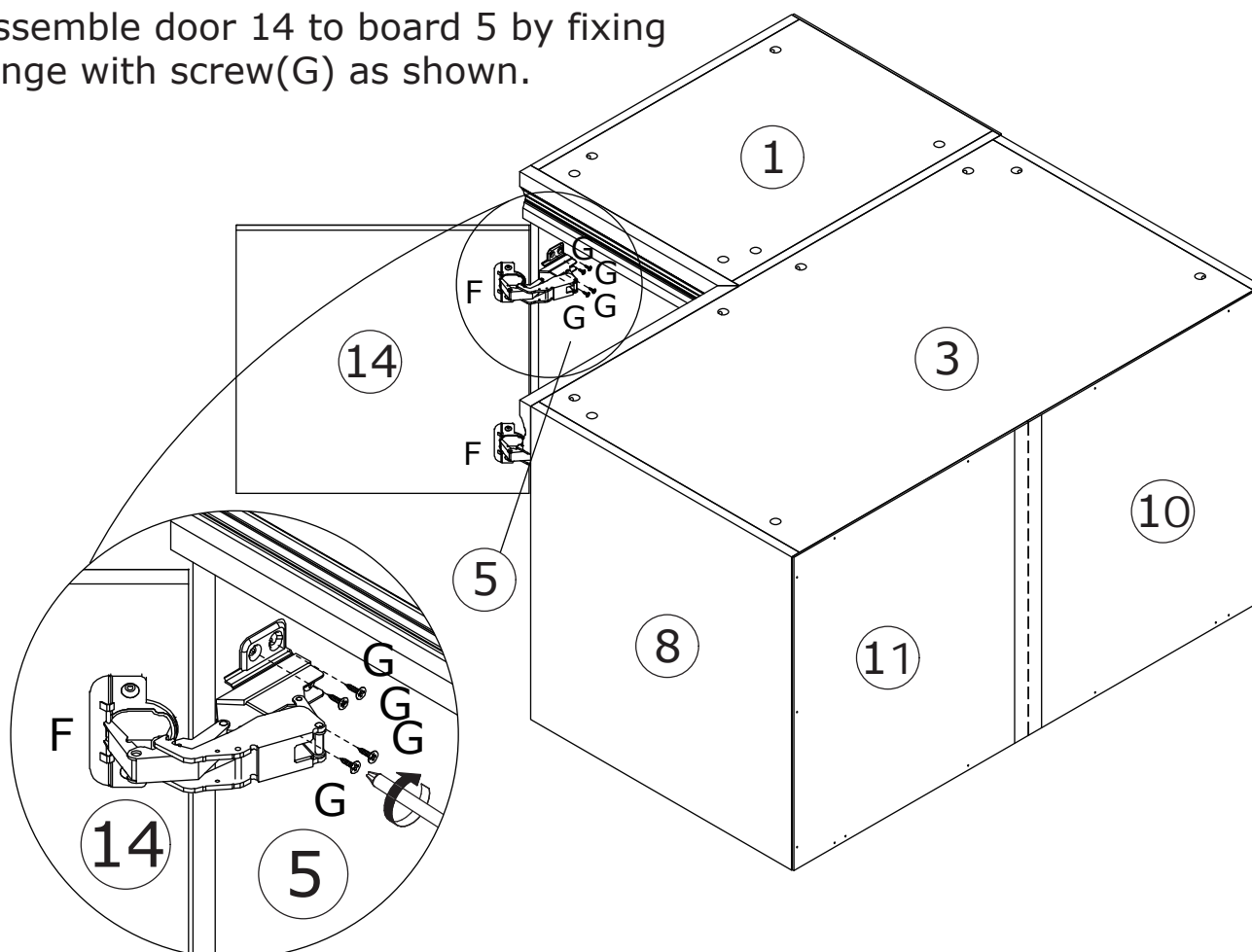
G x 8



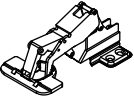



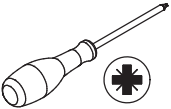
CRD3514A

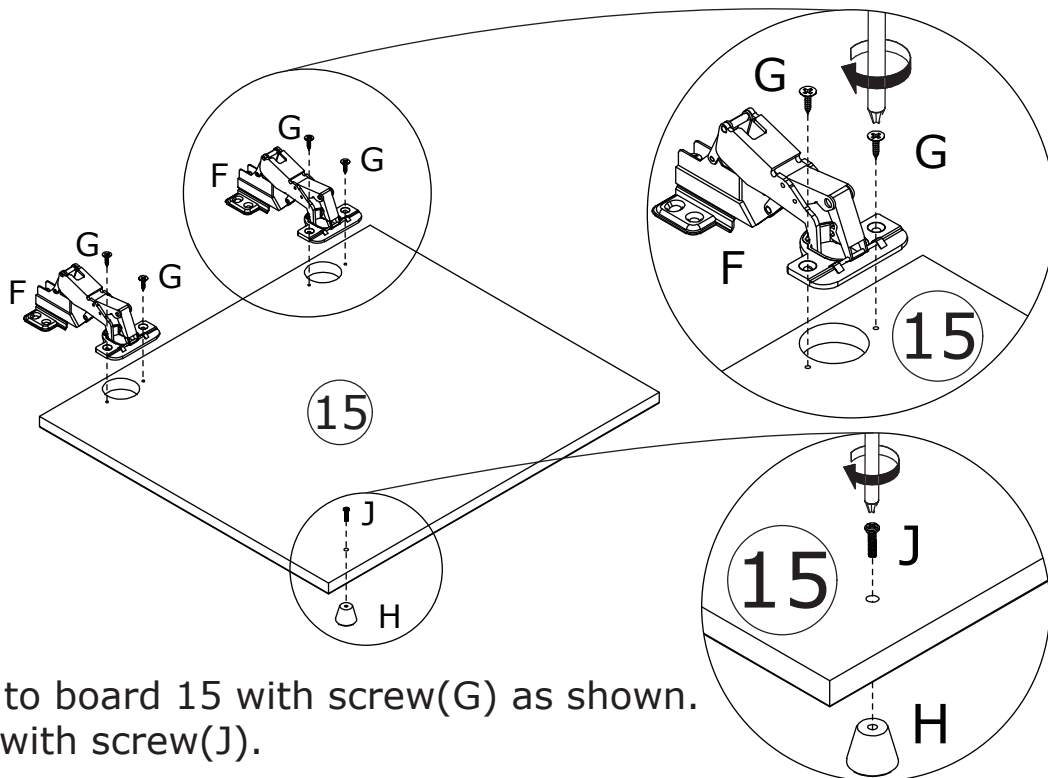


Assemble door 14 to board 5 by fixing hinge with screw(G) as shown.



19

<p>F x 2</p>  <p>Ø35</p>	<p>G x 4</p>  <p>CRD3514A</p>	<p>H x 1</p>  <p>Ø20 x 23 mm</p>	<p>J x 1</p>  <p>CRE0418A</p>	
---	--	---	---	---

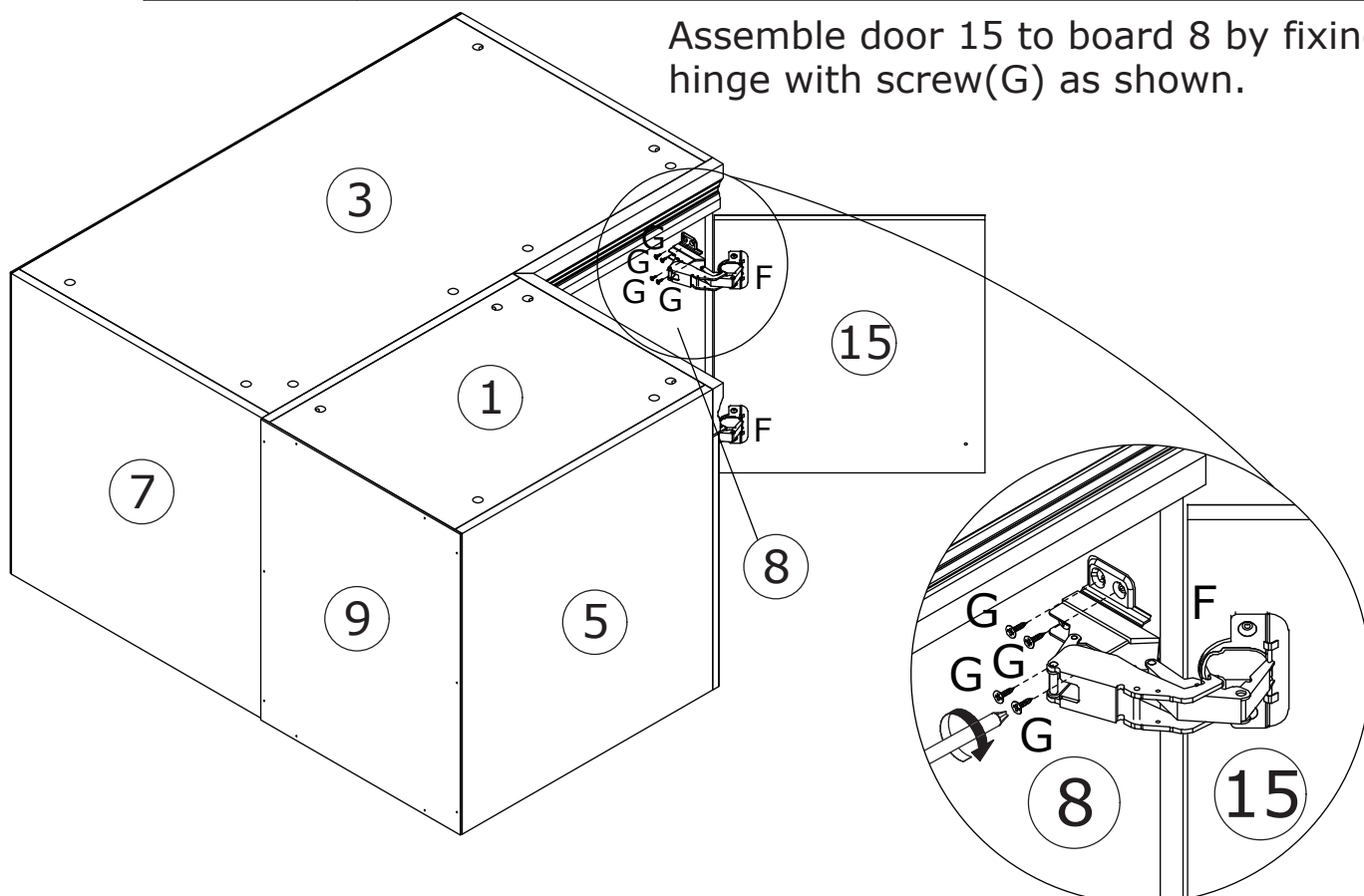


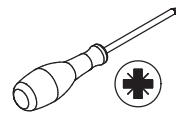
Fix hinge(F) to board 15 with screw(G) as shown.
Fix knob(H) with screw(J).

20

<p>G x 8</p>  <p>CRD3514A</p>	
--	---

Assemble door 15 to board 8 by fixing hinge with screw(G) as shown.

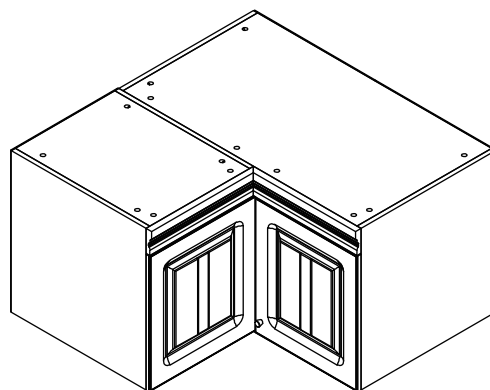




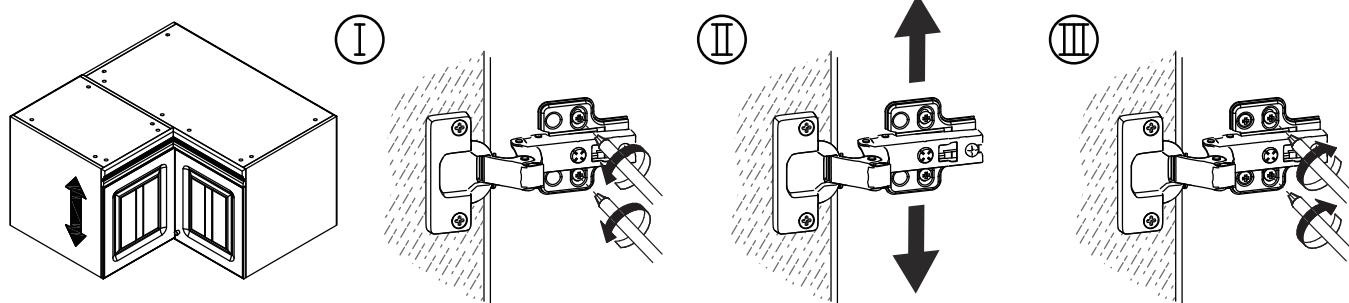
If there is misalignment after you install, adjust the screw to the best condition.

If doors are still not aligned if the hinges are properly correctly, please watch the video.

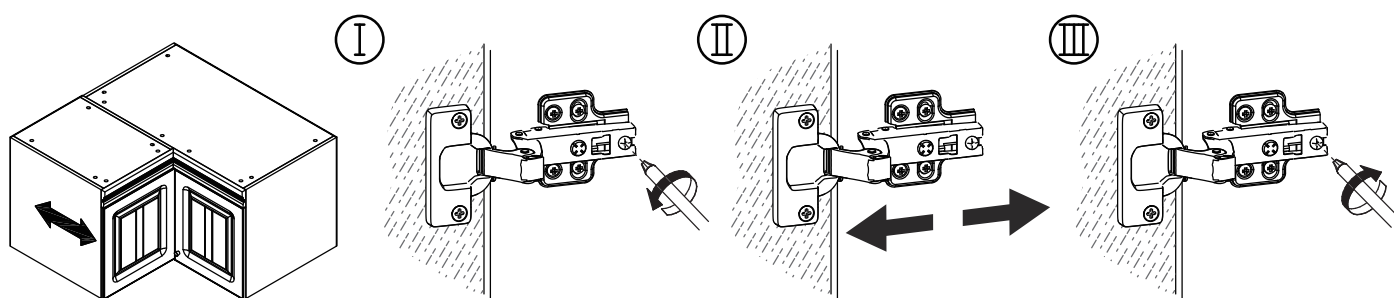
<https://youtu.be/n0Lb36SoODM>



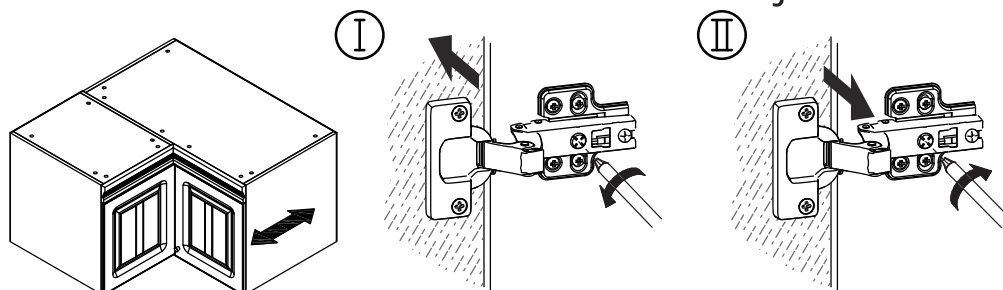
Up & Down Adjustment



Left & Right Adjustment



Forward & Back Adjustment



22

E x 2

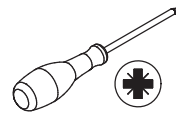


28 x 14 mm

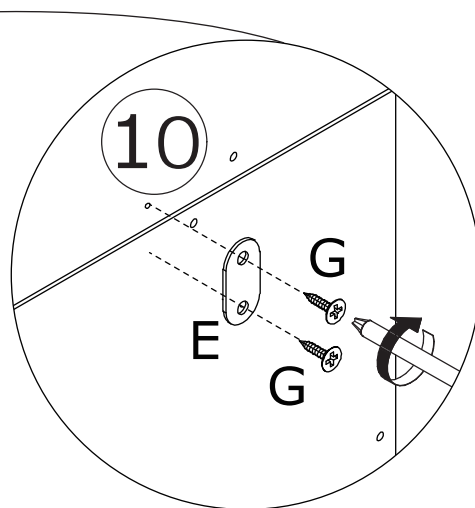
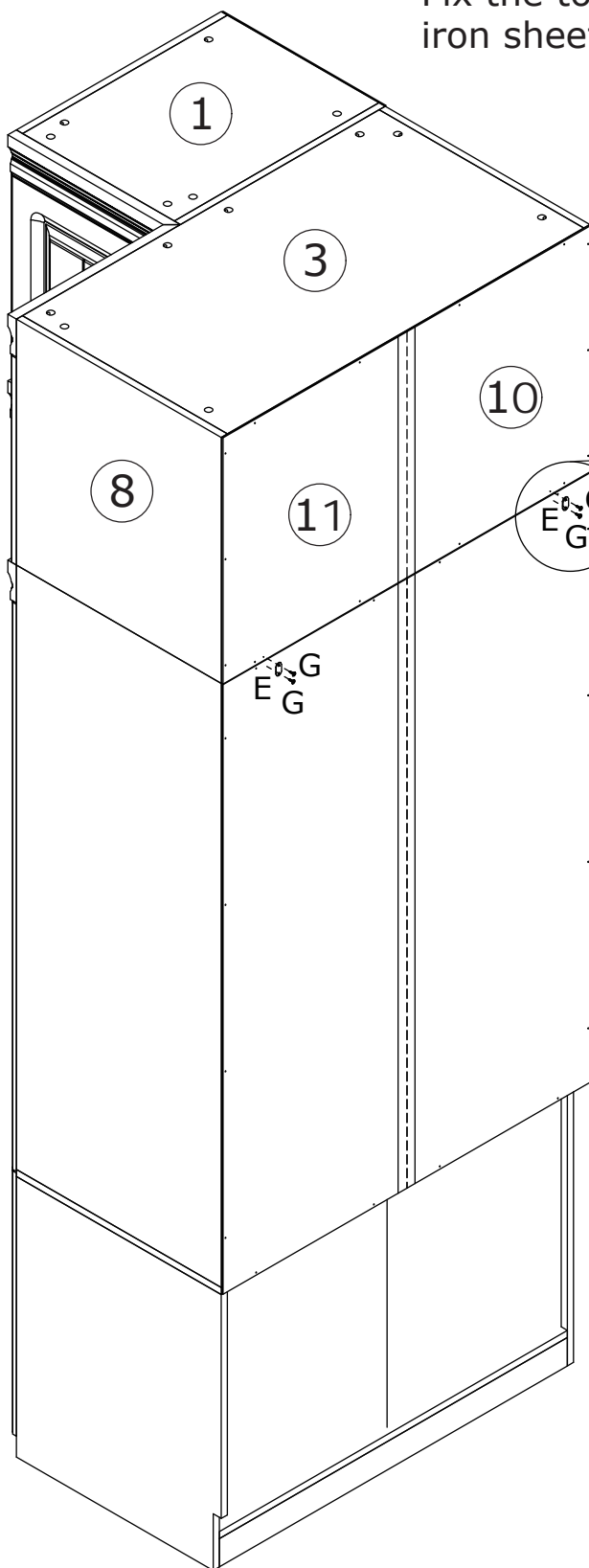
G x 4



CRD3514A



Fix the top cabinet to a wardrobe using iron sheet(E) and screw(G) as shown.



WARRANTY

WARRANTY CLAIMS

- There is a 30-day warranty for broken furniture or any other problems that do not work properly. The warranty will start from the date of purchase which must be verified by proof of purchase.
- Before making a claim, we may be able to answer your query, simply call us. Please leave your purchase order number, along with some details of the problem, if you want a replacement part. We will arrange within 48 hours. If there is out of stock, we will reply with a shipping date.
- The product must be used in accordance with the instructions provided. For health reasons.
- For other reasons, if the furniture needs to be returned, it must be cleaned and dried and operated within 30 days of receipt.

Type of Warranty Claim

- Failure to follow the furniture instructions will invalidate the warranty. Attention please.
- Does not include damage during installation, but includes damage during transportation.

Scope of responsibility

- Shall not bear any responsibility for misuse or user damage and / or loss of parts during the installation of furniture.
- After using, the damage and scratches of the furniture are not covered by the warranty.

The Warranty Relates to All Bought in The Us and Covers The Following Areas

- Sheet parts: 1 month from the date of purchase.
- Electrical parts: 1 month from the date of purchase.

RETURNS

CHANGED YOUR MIND AND NEED TO RETURN YOUR ITEM?

PLEASE FOLLOW THE BELOW INSTRUCTIONS:

- If you have purchased and have simply changed your mind, follow the retailer's instructions for returns.

DEFECTIVE ITEMS

- If your item is defective in any way, i.e. it doesn't work but you can't identify why, in the first instance, please call us.

DAMAGED ITEMS

- If you receive an order with obvious shipping damage from the retailer, then we suggest the delivery is refused. If the delivery has been accepted and then shipping damage is found, please follow the specific instructions advised by the retailer.
In all circumstances please save all packaging material and paperwork for the order. Please be aware that if you dispose of packaging material or attempt to return the merchandise without contacting the fulfiller, you jeopardise your chances of making a claim, and you may not receive a credit for the return.

AFTER-SALES CONTACT



feedbackstation@163.com



(303)800-6387