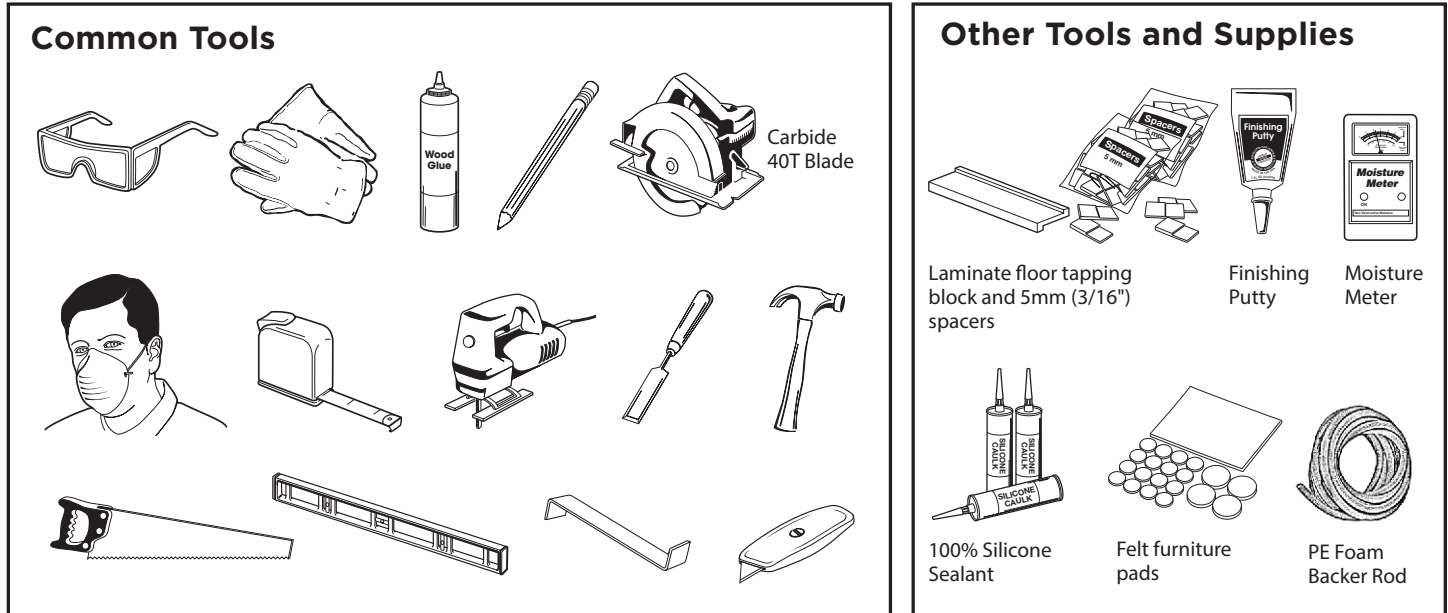
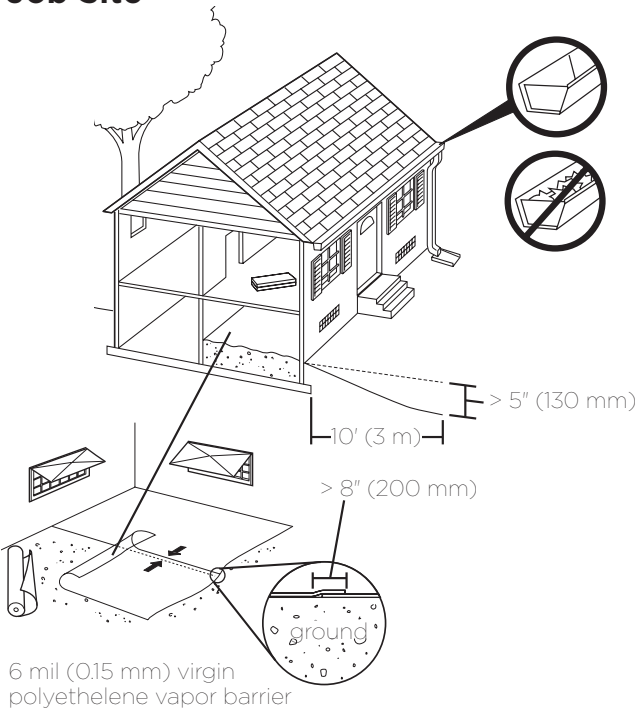


## Quick-Step Studio Laminate Flooring Installation Instructions

### Tools Required for Installation



### Job Site



### Site Requirements

Laminate is a durable floor covering, not intended as structural material. Laminate requires a clean, dry, secure subfloor that meets building codes.

The following requirements are not intended to supersede federal, state or local building codes, but as with many other interior finish products, may require modifying existing structural components for successful installation. Owner assumes responsibility for compliance with all building codes.

Laminate floor is suitable for use in climate controlled (35-65% RH and 60-85° F) indoor installations only and should not be installed over any floor with a sump pump or in a room with a floor drain. Laminate floor can be installed above, on or below grade.

A moisture test is strongly recommended to determine if high moisture exists in the subfloor. When using a calcium chloride moisture test for concrete subfloors (ASTM F1869), values must be  $\leq 5$  lbs/1000ft<sup>2</sup>/24-hr or  $<80\%$  RH with an in situ probe (ASTM F2170). Moisture readings of wood subfloors must be  $\leq 12\%$ .

Acceptable job site conditions, including relative humidity and subfloor moisture conditions, must be maintained throughout the lifetime of the flooring.

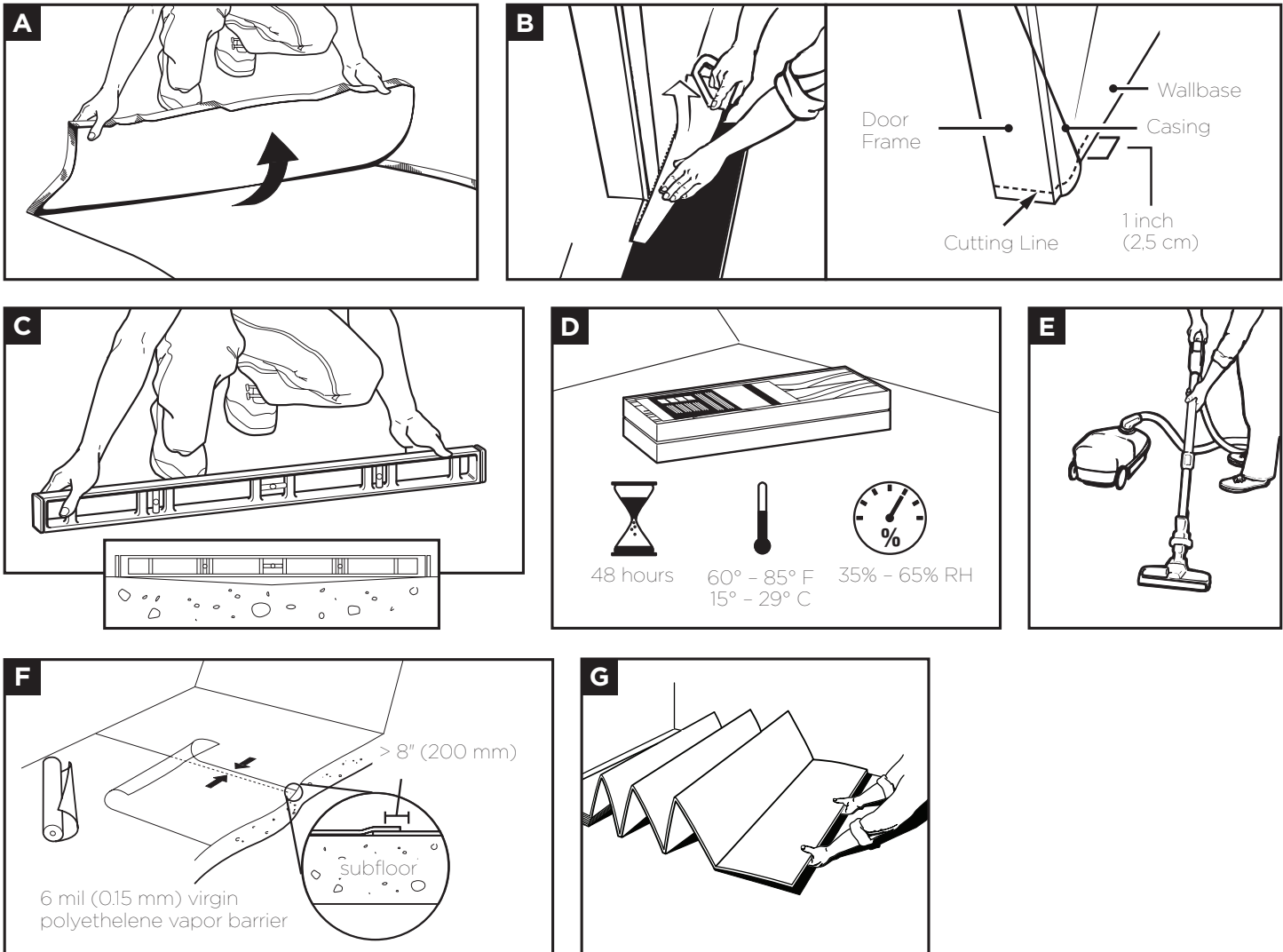
Laminate flooring is installed as a floating floor and requires the use of T-moldings in doorways 4 ft (1.22m) or less and in rooms 40 feet (12.2 m) or larger in length or width. Floor movement must not be constrained by glue, nails, screws, hardware or other fixed obstructions.

This product must be installed in accordance with these installation instructions.

**For more information, visit [QuickStepatLowes.com](http://QuickStepatLowes.com) or call 1-888-387-9882**

# Quick-Step Studio Laminate Flooring Installation Instructions

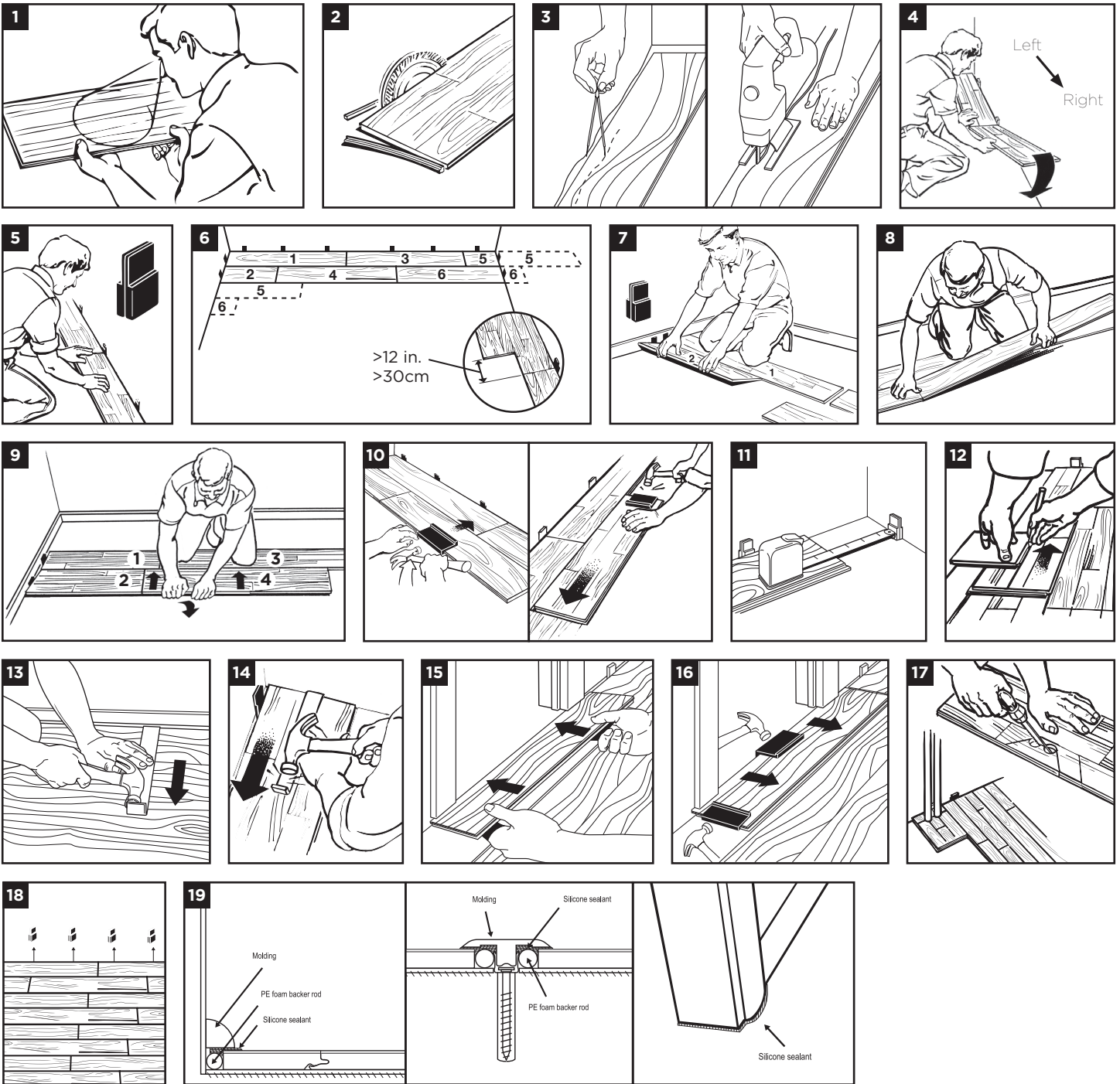
## Site and Material Preparation



- A) Remove carpet and padding. Also remove any wood flooring installed on concrete. Do not remove products unless they are asbestos-free.
- B) Undercut door frame and wallbase. Slide the flooring at least 1/4" underneath the door frame and wallbase. Also leave a concealed 3/8" minimum expansion space under each.
- C) Remove bumps or peaks in subfloor and fill depressions with floor leveling compound to ensure no more than 3/16" unevenness per 10-foot span.
- D) Acclimate unopened product before installation. If there is no time for acclimation, **there should be no more than a difference of 25° F and 20% relative humidity between the stocking/transportation environment of the flooring and the final installation environment of the flooring.**
- E) Clean debris from subfloor before installation.
- F) For concrete subfloors, install vapor barrier with overlapped seams of 8" or more.
- G) **For planks without attached underlayment,** install over single layer of underlayment appropriate for laminate floors. **For planks with attached underlayment,** it is acceptable to install Pergo Gold™ underlayment (Lowes Part # 670312) prior to flooring installation if desired. Make sure to follow the Pergo Gold installation instructions, taking special care to seal all foam edges with sealing tape and repair all rips and perforations in the underlayment vapor barrier prior to flooring installation. A separate vapor barrier should not be used in conjunction with Pergo Gold.

# Quick-Step Studio Laminate Flooring Installation Instructions

## Flooring Installation



## Quick-Step Studio Laminate Flooring Installation Instructions

### Flooring Installation

1. Inspect each plank. Floor should be installed blending planks from several cartons at the same time to ensure good color and shade mixture throughout the installation.
2. For the first row along straight walls, remove the tongue on all long side joints and on the short side of the 1st plank only.
3. For uneven walls, trace contour on tongue-side of plank and cut.
4. Assemble the first row tongue side toward wall. Insert the end tongue into the end groove and rotate downward to assemble. Keep the planks aligned and the joints closed.
5. Two spacers thick side to thick side = 3/8".
6. Provide a 3/8" space for expansion on all sides. First piece must be at least 8" long. Start new rows with pieces trimmed from previous row. Ensure at least a 12" end joint offset.
7. At a slight angle, insert the tongue of plank 2 into the groove of plank 1 until the laminate edges meet, and then rotate down until the joints lock.
8. Join the short end of the plank first. There will be a gap on the long side joints when the plank is rotated down.
9. Raise the outside edge of the plank upward approximately 1". Maintain this angle as you push the plank in until the laminate edges meet. Rotate downward on the plank until the joint locks. Repeat these steps to complete the installation. **Installation Tip: Place a carton of planks across the end of the row being installed to keep installed planks in place during installation.**
10. **Alternate Tap Method:** Align the tongues into the grooves of the long and short sides of the planks. Install the long side first by placing a tapping block no closer than 8" from either end and tap lightly along the long side until the joint is closed tightly. Then tap the end using the tapping block into a locked position. **Note: Uneven tapping or use of excessive force may damage the joint.**
11. Ensure there will be a 3/8" gap (after the joint is closed) to the wall for expansion.
12. For the last row, align the plank to be used on top of the 2nd to last row. Using a full width plank as a spacer, trace wall contour and cut plank.
13. For the last row, install the long side tongue into the groove with the end joint aligned. Using a pull bar and hammer, work evenly along the length of the plank and lightly tap the joint closed.
14. After tapping the long side joint closed, tap the short side closed, using a tapping block or a pull bar.

### Installation Under Doorway Frames

15. Slide plank under pre-cut door frame.
16. Tap the long side joint closed first. Then tap the end joint closed.

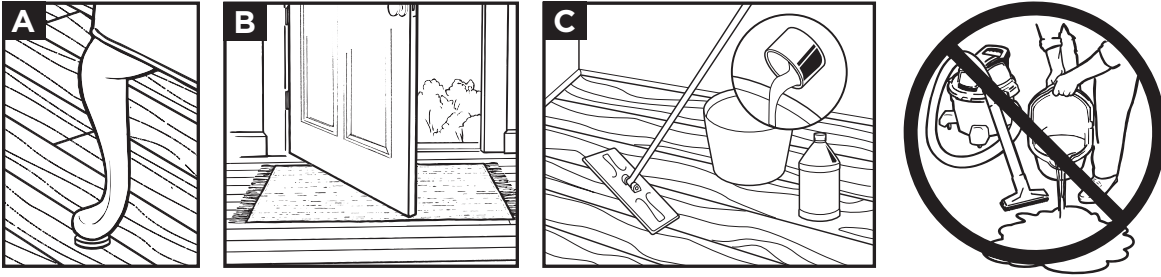
### Installation Around Fixed Objects (such as Pipes)

17. Allow 3/8" expansion space around pipes or other fixed objects.

### Finishing the Installation

18. Remove all spacers.
19. The entire perimeter of the installation must be sealed with Simple Solutions waterproof quarter round (Lowe's item # 3674489) or 100% silicone sealant in accordance with the installation instructions. For sections where Simple Solutions waterproof quarter round cannot be used, seal the perimeter with 100% silicone sealant, as follows.  
**DO NOT** use acrylic sealant.
  - First fill all expansion spaces with 3/8" compressible PE foam backer rod and cover with silicone sealant.
  - Prior to installing the moldings, apply silicone sealant to the portion of the molding or transition that will contact directly with the laminate flooring surface.
  - Install moldings and immediately wipe away any excess silicone sealant.
  - Apply silicone sealant at connections to doorframes or any other fixed objects.

## Quick-Step Studio Laminate Flooring Installation Instructions



### Care and Cleaning

Place felt floor protectors under legs of moveable furniture. Chair casters should be rubber — not plastic or metal. Place walk-off mats at entrances. Dust mop as primary cleaning method. Occasionally wet mop with water only, using a well wrung out mop; **DO NOT** pour liquid directly on floor or use an excessively wet mop that will puddle or leave moisture standing on the floor. If needed, use a solution of 1 cup of vinegar per gallon of water OR 1/3 cup non-sudsing ammonia per gallon of water. **DO NOT** use detergents, abrasive cleaners, soaps, waxes or polishes. Use correct hard surface vacuum tools. **DO NOT** use rotating beater bars, floor scrubbers, steamers, jet mops or similar products. Wipe up spills immediately. **DO NOT allow topical moisture to remain on the floor longer than the time specified in the product warranty.**

**⚠ WARNING:** DRILLING, SAWING, SANDING OR MACHINING WOOD PRODUCTS CAN EXPOSE YOU TO WOOD DUST, A SUBSTANCE KNOWN TO THE STATE OF CALIFORNIA TO CAUSE CANCER. AVOID INHALING WOOD DUST OR USE A DUST MASK OR OTHER SAFEGUARDS FOR PERSONAL PROTECTION. FOR MORE INFORMATION, GO TO [WWW.P65WARNINGS.CA.GOV/WOOD](http://WWW.P65WARNINGS.CA.GOV/WOOD).

**IMPORTANT HEALTH NOTICE FOR MINNESOTA RESIDENTS ONLY:** THESE BUILDING MATERIALS EMIT FORMALDEHYDE. EYE, NOSE, AND THROAT IRRITATION, HEADACHE, NAUSEA AND A VARIETY OF ASTHMA-LIKE SYMPTOMS, INCLUDING SHORTNESS OF BREATH, HAVE BEEN REPORTED AS A RESULT OF FORMALDEHYDE EXPOSURE. ELDERLY PERSONS AND YOUNG CHILDREN, AS WELL AS ANYONE WITH A HISTORY OF ASTHMA, ALLERGIES, OR LUNG PROBLEMS, MAY BE AT GREATER RISK. RESEARCH IS CONTINUING ON THE POSSIBLE LONG-TERM EFFECTS OF EXPOSURE TO FORMALDEHYDE. REDUCED VENTILATION MAY ALLOW FORMALDEHYDE AND OTHER CONTAMINANTS TO ACCUMULATE IN THE INDOOR AIR. HIGH INDOOR TEMPERATURES AND HUMIDITY RAISE FORMALDEHYDE LEVELS. WHEN A HOME IS TO BE LOCATED IN AREAS SUBJECT TO EXTREME SUMMER TEMPERATURES, AN AIR-CONDITIONING SYSTEM CAN BE USED TO CONTROL INDOOR TEMPERATURE LEVELS. OTHER MEANS OF CONTROLLED MECHANICAL VENTILATION CAN BE USED TO REDUCE LEVELS OF FORMALDEHYDE AND OTHER INDOOR AIR CONTAMINANTS. IF YOU HAVE ANY QUESTIONS REGARDING THE HEALTH EFFECTS OF FORMALDEHYDE, CONSULT YOUR DOCTOR OR CALL LOCAL HEALTH DEPARTMENT.

## Quick-Step Studio Laminate Flooring on Wall Install Instructions

Although originally designed as a durable floor covering, many consumers have started using Quick-Step Studio® laminate flooring on walls to give their rooms more character and to create a feature or accent wall.

Laminate can be utilized as a decorative covering over an existing clean, dry, secure and vertical wall that meets building codes. The wall substrate should be primed or painted drywall (gypsum board) only. Do not install directly over wallpaper or paneling. Laminate is not intended to be used on ceilings, countertops or as any type of structural material.

The installation wall should only run vertical to the floor. Sloping walls and surfaces that are parallel to the floor, such as ceilings or soffits, should not be selected. Limit vertical installations to a maximum of 40 feet in length and a maximum of 1 plank length in height. Limit horizontal installations to a maximum of 40 feet in length and a maximum of 10 feet in height.

Laminate is suitable for an accent wall when used in climate controlled (35-65% RH and 60-85° F) indoor installations only. Acclimate unopened product lying flat in the room where it is to be installed for at least 48 hours. Mix planks from different cartons as you install to maximize the natural appearance.

Check wall for moisture, visible water stains or leaking windows. Do not install laminate over a wall with known moisture damage. Do not install in areas near water sources such as a backsplash over a sink or bathtub. Acceptable job site conditions, including relative humidity and wall moisture conditions, must be maintained throughout the life of the laminate application.

Check wall for flatness within 3/16" over 10 feet. Correct any unevenness before installing to allow the laminate planks to lie flat without rocking.

The following requirements are not intended to supersede federal, state or local building codes, but as with many other interior finish products, may require modifying existing structural components for successful installation. Owner assumes responsibility for compliance with all building codes, including maintaining the required distance from heat sources such as fireplaces.

**WARNING:** For a safe and secure installation, this product **MUST** be installed in accordance with these installation instructions.

### Tools Required for Installation:

- Caulk gun
- Utility knife
- Stud finder (electronic)
- Carpenters level or laser level
- Chalk line
- 18 gauge brad nail gun (electric or air)
- Tape measure
- Pencil
- Screw gun or drill driver (for horizontal installation only)
- Safety glasses
- Dust mask
- Gloves

### Materials Required for Installation:

- 1 1/2" - 1 3/4" brad nails
- 100% silicone adhesive caulk (clear)
- 1 1/2" - 1 3/4" dry wall screws (for horizontal installation only)
- Painters tape (for horizontal installation only)

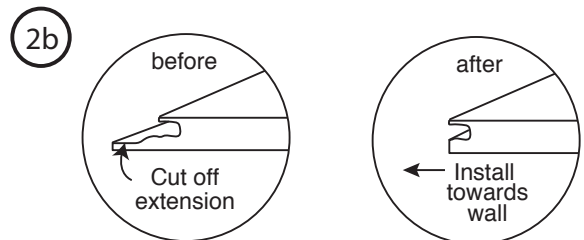
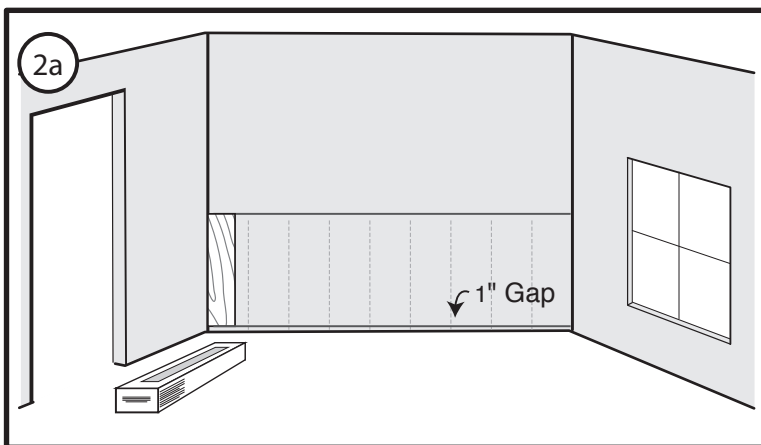
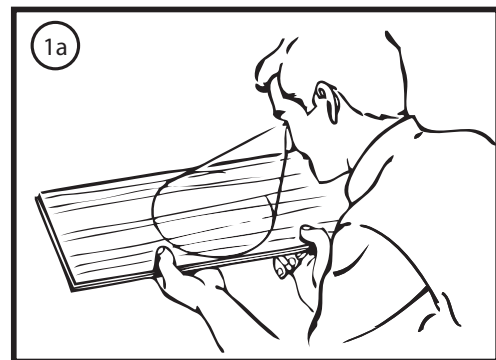
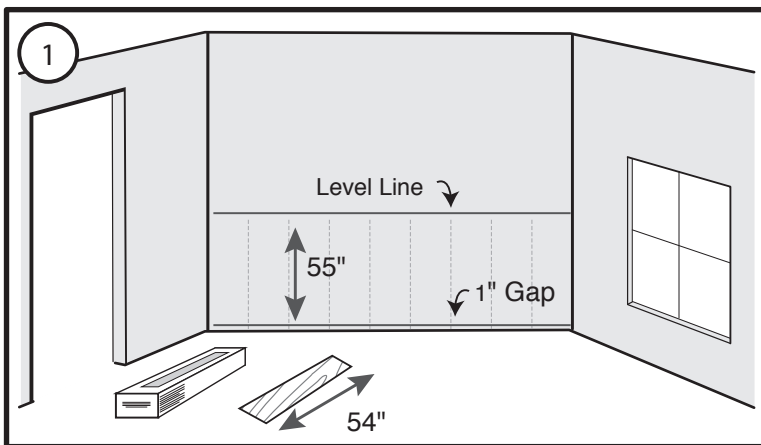
### Other Tools and Materials:

- Step ladder (for horizontal installation only)
- Hammer
- Unilic® appropriate tapping block
- Pull bar
- Saw for cutting laminate planks
- Pry bar (for removing existing base or trim)
- Chair rail (for vertical installation only), wall base and quarter round moldings (to frame out accent wall)



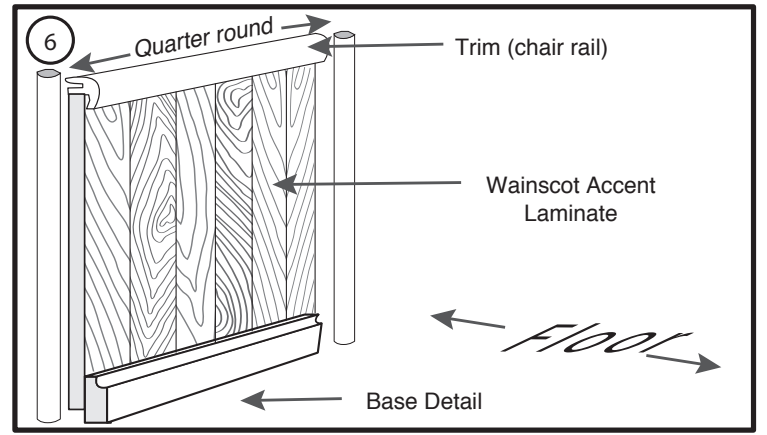
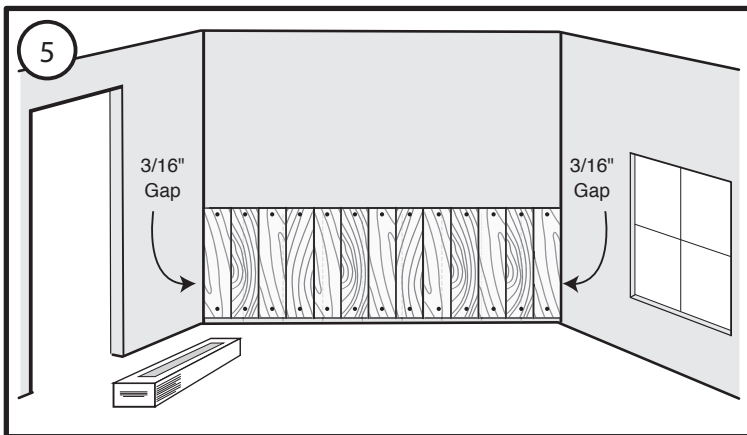
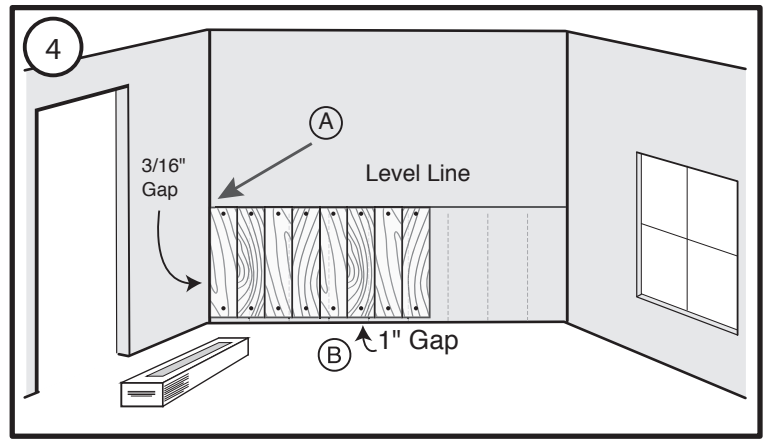
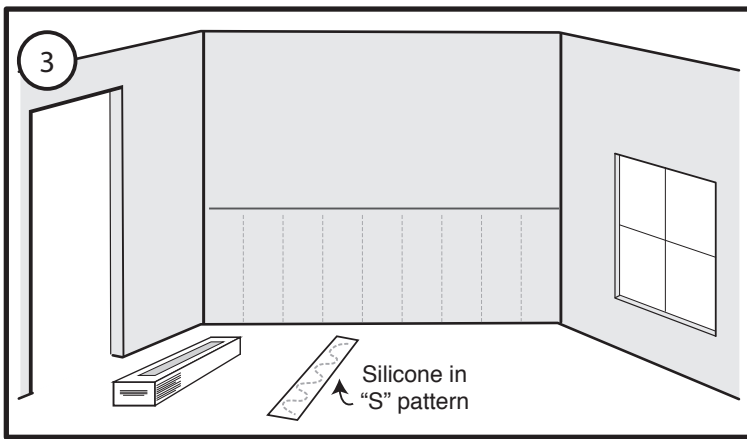
## Quick-Step Studio Vertical Wainscot Style Wall Install Instructions

1. Measure the length of your laminate plank and the length of the wall area to determine the total square footage area. Order that amount of flooring plus an additional 10% for incorrect cuts. Limit vertical installations to a maximum of 40 feet in length and a maximum of 1 plank length in height.
2. Remove all base and trim from accent wall. Measure from the floor a distance equal to your laminate plank plus one inch then level and mark the wall with a chalk line. With an electronic stud finder locate and mark wall studs. (Figure 1)
3. Turn off power while working around wall outlets and light switches. Pay special attention to avoid contact with electrical wiring.
4. Inspect each plank for damage before installing. (Figure 1a) Do not install damaged planks. You can use laminate planks with or without an attached pad. There is no need to remove the pad, so treat the installation the same for both types of planks.
5. Start from the left side with the short side tongue up and long side groove toward the wall. Place one plank against the wall and align at the top to test fit. You will want a 1" gap at the bottom of the plank. (Figure 2a)
6. Determine the appropriate number of vertical planks to fill the wall. For the best appearance, the first and last planks should be approximately the same width. Cut them as needed based on the width of your installation and the width of your planks.
7. If you don't need to cut the first plank, remove lower extension of long side groove with saw or utility knife. (Figure 2b)



## Quick-Step Studio Vertical Wainscot Style Wall Install Instructions

8. Apply silicone adhesive to the back side of the plank in an "S" pattern. If you're using a laminate plank with an attached pad, apply the silicone directly to the pad on the back of the plank. (Figure 3)
9. Adhere the plank to the wall leaving a  $\frac{3}{16}$ " gap (A) from the corners of the wall and a 1" gap (B) at bottom. Drive brad nails  $\frac{1}{2}$ " from the top and bottom of each plank to secure to wall. Place nails where the trim will cover. (Figure 4)
10. Continue with the installation for each subsequent plank by first applying silicone adhesive to the back side of the plank in an "S" pattern. Then angle the groove over the tongue of the previous plank and wiggle into place. Tighten joints as needed with a tapping block or pull bar. Finally, drive brad nails  $\frac{1}{2}$ " from the top and bottom of each plank to secure to wall. Place nails where the trim will cover. Be sure to drive the brad nails into a stud whenever possible. (Figure 4)
11. Finish wainscot accent to ending wall. (Figure 5)
12. Install trim (chair rail) over the top edge. Install quarter round in the corners. Finish by installing the baseboard of your choice. (Figure 6)



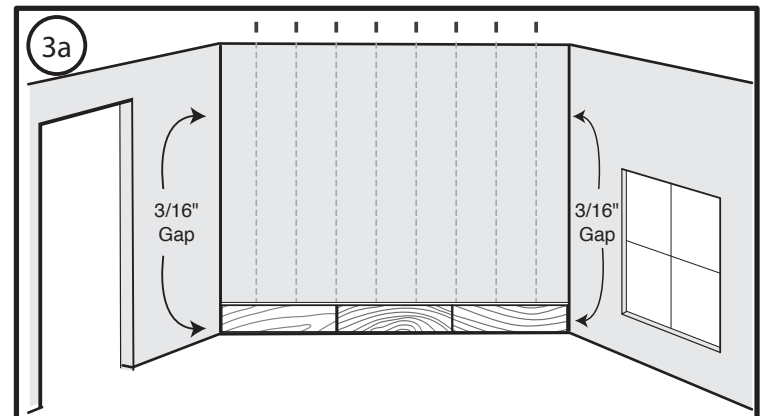
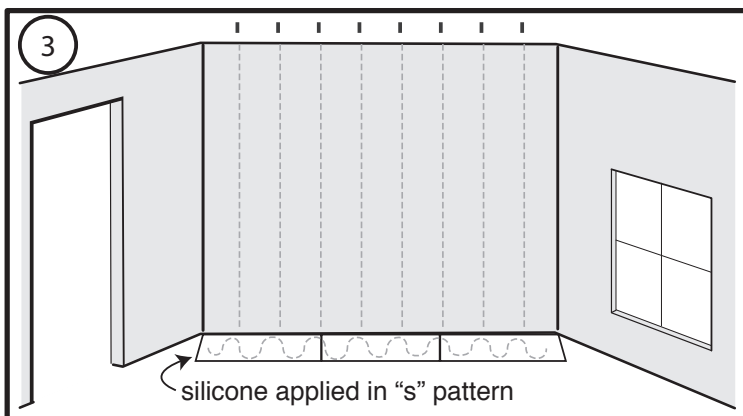
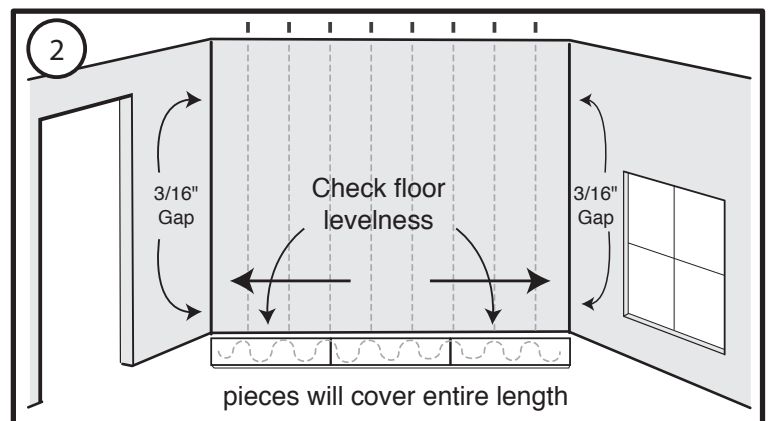
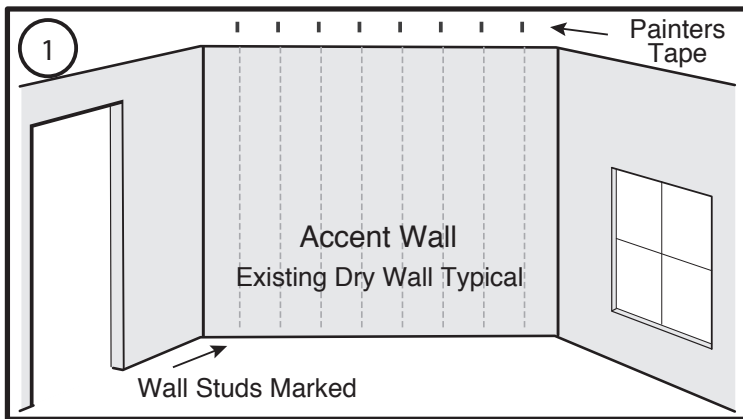
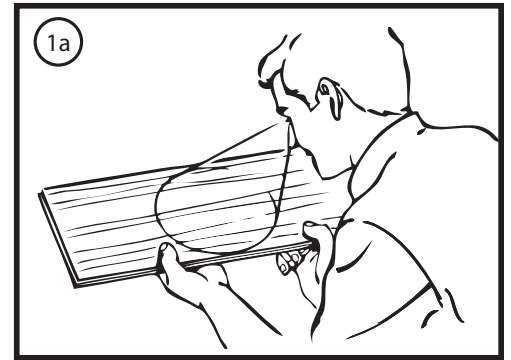


## Quick-Step Studio Horizontal Accent Wall Install Instructions

1. Measure the length and width of the wall area to determine the total square footage area. Order that amount of flooring plus an additional 10% for incorrect cuts. Limit horizontal installations to a maximum of 40 feet in length and a maximum of 10 feet in height.
2. Remove baseboards from the accent wall and locate the wall studs using the stud finder tool. Mark vertical lines over all studs. Use painters tape to extend stud location to ceiling if needed. (Figure 1)
3. Turn off power while working around wall outlets and light switches. Pay special attention to avoid contact with electrical wiring.
4. Inspect each plank for damage before installing. (Figure 1A) Do not install damaged planks. You can use laminate planks with or without an attached pad. There is no need to remove the pad, so treat the installation the same for both types of planks.
5. Lay the planks on the floor with the décor side up and the groove side toward the wall. Assemble the short ends of the planks together and measure length to fit the first row (bottom).
6. Cut the last piece as needed leaving a  $\frac{3}{16}$ " gap against any adjoining walls, if applicable, and click it into place. (Figure 2)

**NOTE:** You may need to adjust placement of the first plank row to account for any floor unevenness so that the first row is perfectly straight and all end joints remain square and tight.

7. Carefully flip the connected row of planks over so the décor side is now face down and the tongue side is toward the wall. You may need assistance to flip the connected row of planks over, depending on the length of your installation. Make sure that the first row is perfectly straight and the aligned joints remain square and tight. Apply a bead of 100% silicone adhesive caulk to the back side of each laminate plank in the first row. If you're using a laminate plank with an attached pad apply silicone directly onto the pad on the back of the plank. (Figure 3)
8. Carefully tilt the row of connected planks against the wall with the tongue side toward the floor, re-level and press to the wall. (Figure 3a)

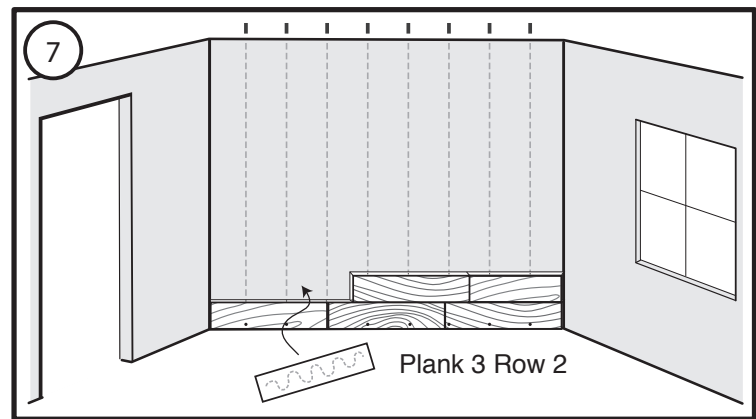
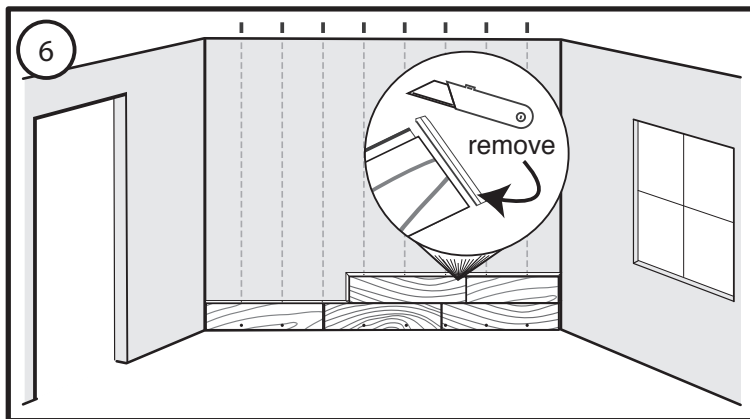
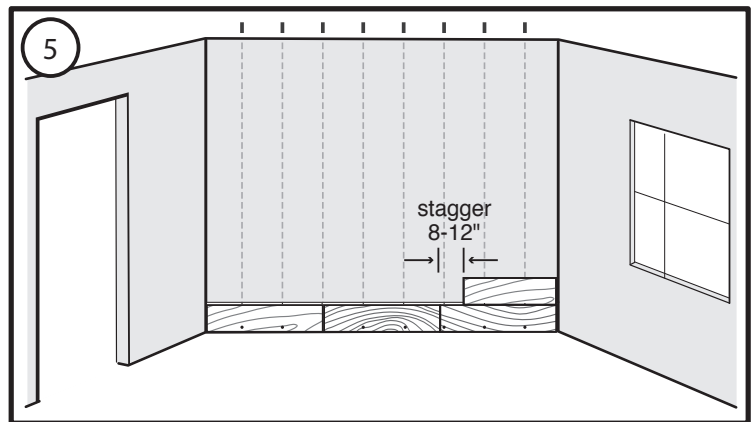
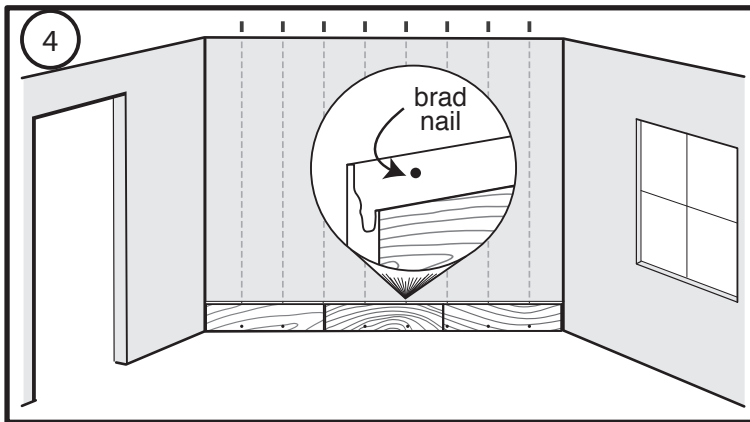


## Quick-Step Studio Horizontal Accent Wall Install Instructions

9. Drive a brad nail into each plank at each wall stud through the shallow area of the extended groove (see inset diagram). Take care that the brad nail heads are not raised, but also don't force them all the way through the groove. This will allow easy connection of the next row of planks. You must also place drywall screws every 16" into the wall studs or sill plate along the bottom edge of the first row of planks where they will be covered by the wall base. (Figure 4)
10. Start the second row from the right side. Cut and glue with silicone adhesive caulk the first plank. Fit plank by angling tongue into groove and wiggle into place. Use tapping block as needed. Drive a brad nail into each plank through the shallow area of the extended groove at each wall stud. (Figure 5)

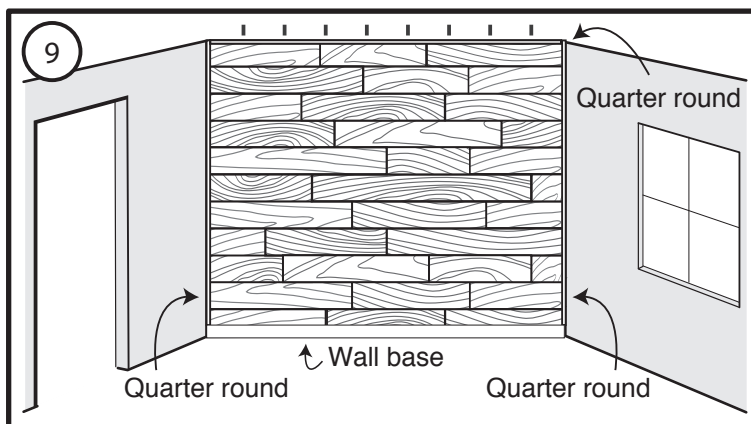
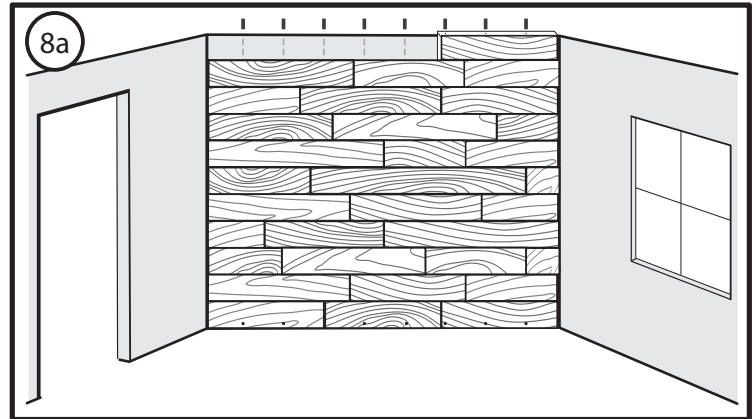
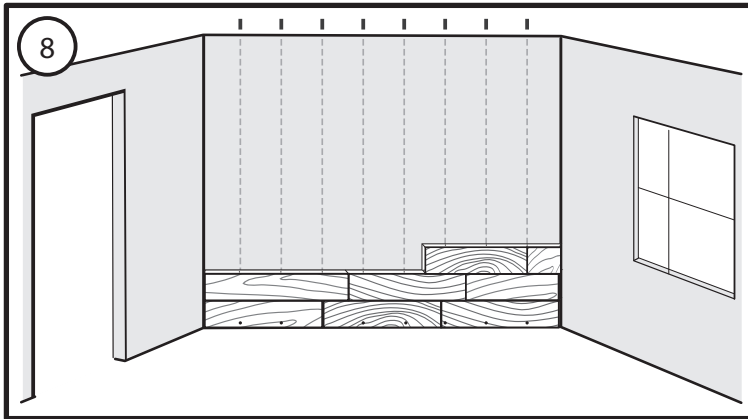
**NOTE:** A joint "stagger" of 8 to 12 inches looks most natural. Avoid allowing plank ends to align.

11. Plank 2 of row 2 (and each plank thereafter in row 2) will be modified by removing the short end tongue. Score the tongue with a utility knife 3 – 4 times to remove. You will now have a square end. (Figure 6)
12. Apply silicone adhesive caulk in an "S" pattern and install modified boards by tilting into place. Tighten joints as needed with a tapping block or pull bar. Drive a brad nail into each plank through the shallow area of the extended groove at each wall stud. (Figure 7)



## Quick-Step Studio Horizontal Accent Wall Install Instructions

13. Repeat this process for each plank working your way up to the last row. (Figure 8)
14. For the last row of the installation, use painters tape to mark the stud location for brad nailing. Cut all planks in the last row to the required width to complete the installation. Complete the installation as you have the earlier rows. (Figure 8A)
15. Use quarter round for inside corners and ceiling. Finish with wall base board of your choice. (Figure 9)



## Quick-Step Studio Laminate Flooring on Wall Install Instructions

### Care and Cleaning

**Dry wipe** as primary cleaning method. Occasionally damp wipe with water only. **NO wet washing.** If needed, use 1 cup of vinegar per gallon of water OR 1/3 cup non-sudsing ammonia per gallon of water. **DO NOT** use detergents, abrasive cleaners, soaps, waxes or polishes. Wipe off spills immediately.

**DO NOT** attach objects such as pictures, shelves or television mounts directly to the laminate wall. **DO NOT** apply adhesive backed hooks or install screws on or into the laminate wall for hanging objects. Instead drill clearance holes through the laminate and mount these objects directly to wall studs with screws or nails. Drill the clearance holes through the laminate at least 1/2" larger than the diameter of the fastener that will be used.

### Precautionary Measures

Power tools should be equipped with a dust collector. If high dust levels are encountered use an appropriate NIOSH designated dust mask. Avoid dust contact with skin and eyes. First Aid Measures in case of irritations: In case of irritation flush eyes and skin with water for at least 15 minutes.

⚠ **WARNING:** DRILLING, SAWING, SANDING OR MACHINING WOOD PRODUCTS CAN EXPOSE YOU TO WOOD DUST, A SUBSTANCE KNOWN TO THE STATE OF CALIFORNIA TO CAUSE CANCER. AVOID INHALING WOOD DUST OR USE A DUST MASK OR OTHER SAFEGUARDS FOR PERSONAL PROTECTION. FOR MORE INFORMATION, GO TO [WWW.P65WARNINGS.CA.GOV/WOOD](http://WWW.P65WARNINGS.CA.GOV/WOOD).

### IMPORTANT HEALTH NOTICE FOR MINNESOTA RESIDENTS ONLY:

THESE BUILDING MATERIALS EMIT FORMALDEHYDE. EYE, NOSE, AND THROAT IRRITATION, HEADACHE, NAUSEA AND A VARIETY OF ASTHMA-LIKE SYMPTOMS, INCLUDING SHORTNESS OF BREATH, HAVE BEEN REPORTED AS A RESULT OF FORMALDEHYDE EXPOSURE. ELDERLY PERSONS AND YOUNG CHILDREN, AS WELL AS ANYONE WITH A HISTORY OF ASTHMA, ALLERGIES, OR LUNG PROBLEMS, MAY BE AT GREATER RISK. RESEARCH IS CONTINUING ON THE POSSIBLE LONG-TERM EFFECTS OF EXPOSURE TO FORMALDEHYDE. REDUCED VENTILATION MAY ALLOW FORMALDEHYDE AND OTHER CONTAMINANTS TO ACCUMULATE IN THE INDOOR AIR. HIGH INDOOR TEMPERATURES AND HUMIDITY RAISE FORMALDEHYDE LEVELS. WHEN A HOME IS TO BE LOCATED IN AREAS SUBJECT TO EXTREME SUMMER TEMPERATURES, AN AIR-CONDITIONING SYSTEM CAN BE USED TO CONTROL INDOOR TEMPERATURE LEVELS. OTHER MEANS OF CONTROLLED MECHANICAL VENTILATION CAN BE USED TO REDUCE LEVELS OF FORMALDEHYDE AND OTHER INDOOR AIR CONTAMINANTS. IF YOU HAVE QUESTIONS REGARDING THE HEALTH EFFECTS OF FORMALDEHYDE, CONSULT YOUR DOCTOR OR CALL LOCAL HEALTH DEPARTMENTS.

## Quick-Step Studio Limited Lifetime<sup>\*</sup> Residential Warranty for Wall Installations Only

Quick-Step Studio laminate flooring comes with and is subject to the terms of this Limited Lifetime Residential Warranty for wall installations. This Limited Lifetime Warranty covers defects in material and/or workmanship which relate to staining and fading during normal residential use when written installation and maintenance instructions are followed.

### Stain Resistance

Quick-Step Studio flooring will resist staining.

### Fade Resistance

Quick-Step Studio flooring will resist fading from exposure to sunlight or artificial light.

To qualify for any repair or replacement, you will need to provide the original dated sales receipt or other documentation to demonstrate proof of purchase.

For your records, fill in the following information and keep in a safe place with your original documentation.

Lowe's store number \_\_\_\_\_

Lowe's store address \_\_\_\_\_

Purchase date \_\_\_\_\_

Product name \_\_\_\_\_

## General Terms and Conditions for Laminate Warranties

All areas must be assessed prior to installation to determine if other surface measures need to be taken or conditions addressed, including, but not limited to requirements for static control, state health and building codes, high impact use and moisture/water exposure. Other than the specific warranty identified above, Quick-Step provides no additional warranties and Quick-Step does not warrant that any of the uses identified above are in compliance with any applicable building, health, inspection, and/or other municipal regulation or codes. Quick-Step is not responsible for usage that is not in compliance with any regulation or code. Proper assessment of location and usage must be applied. Contact your Quick-Step Studio representative for questions on performance in specific locations.

Quick-Step Studio laminate flooring carries the specific wall installation warranties listed above which are subject to the following general terms and conditions:

1. This warranty applies only to the person stated as the buyer on the purchase document(s). This warranty applies only to first quality Quick-Step Studio brand product purchases made after the edition date of this warranty when the product is installed in an indoor, climate controlled private residence and according to the Quick-Step Studio's written installation instructions. Product must be maintained in accordance with Quick-Step Studio's written instructions.
2. This warranty only applies to defects inherent to the material supplied. Quick-Step will repair or replace the area of defective product, at its option. When replacement of the flooring is made, only new planks from the current product range at the time the complaint is upheld will be supplied. There will be no other form of compensation. Responsibility under this warranty only applies to defects that were not visible before or during the installation of the product. If the product was originally professionally installed, Quick-Step will cover reasonable labor costs for repairing or replacing any defective product.
3. This warranty does not cover damage to the product caused by installation errors. Flooring planks must be checked carefully for material defects before and during installation and under sufficient lighting. Products with visible defects must not be installed under any circumstances. The retailer must be informed in writing of such defects within 15 days. After this time has elapsed, no further complaints will be accepted. Color and gloss differences resulting from material added to an existing installation at a later date and from non-warranty repairs are excluded from coverage.

## Quick-Step Studio Limited Lifetime\* Residential Warranty for Wall Installations Only

4. This warranty does not apply to laminate flooring that has been put to abnormal use or conditions or abused in any way, which includes, but is not limited to moisture damage from plumbing, storm, flood or pet urine; damage from smoke, fire or other casualty events; damage caused by negligence; improper alterations of the original manufactured product; damage from use of the flooring that is unreasonable considering the normal and expected uses of a laminate floor in a residential environment; damage of mechanical nature, severe impact or scratches (caused by dragging objects or furniture) or cutting; damage caused by water or moisture trapped beneath the floor due to improper walls or underlayment, including but not limited to damage from hydrostatic pressure (water or moisture on the wall behind the product that is transmitted to the surface through exerted pressure) or other conditions that result in water or moisture behind the floor; or damage caused by moisture left on the floor around the wall base and trims. Do not use this product as a backsplash or otherwise install near sinks or other wet work areas. The damage to the product must be evident, measuring per product unit (plank, accessory, etc.) at least 1.40 square centimeters or 0.5 square inch.
5. These limited warranties apply to vertical wall installations only. They do not apply to floor installations. Other horizontal uses of this product are not covered by these limited warranties. Never install this product on a ceiling or as a countertop.
6. This warranty applies only to Quick-Step Studio brand product installed according to the manufacturer's recommended wall installation instructions in indoor climate controlled residential spaces. The use of accessories other than Quick-Step approved items may cause damage to the Quick-Step Studio floor. Proof of compliance with the installation and maintenance instructions must be provided if a claim is filed.
7. This warranty does not apply to damage from exposure to extreme heat, dryness, or stains as a result of chemical or industrial products (other than recommended cleaning products). The flooring may not be installed in damp and/or humid areas, in extremely dry areas, or areas where there are extremely high temperatures (such as saunas or swimming pool areas).
8. **Pro Ration of Warranty Period:** The Limited Lifetime Residential warranty period is prorated. The prorated warranty is one that provides for a refund or credit that decreases according to a set formula as follows:

Material Proration			
1st year 100%	6th year 100%	11th year 80%	16th year 30%
2nd year 100%	7th year 90%	12th year 70%	17th year 25%
3rd year 100%	8th year 90%	13th year 60%	18th year 20%
4th year 100%	9th year 90%	14th year 50%	19th year 15%
5th year 100%	10th year 90%	15th year 40%	20th year 10%

No Implied Warranties/Special Damages

**ALL IMPLIED WARRANTIES WHICH MAY ARISE BY IMPLICATION OF LAW OR APPLICATION OF COURSE OF DEALING OR USAGE OF TRADE—INCLUDING BUT NOT LIMITED TO IMPLIED WARRANTIES OF MERCHANTABILITY OR FITNESS FOR A PARTICULAR PURPOSE— ARE EXPRESSLY EXCLUDED. NO WARRANTIES, EXPRESS, IMPLIED, STATUTORY OR OTHERWISE, EXTEND BEYOND THOSE EXPRESSLY SET FORTH IN THIS WARRANTY BROCHURE, AND ALL SUCH WARRANTIES ARE EXPRESSLY DISCLAIMED.** Implied warranties refer to ones that the law presumes to have been given by the seller even though they are not set out in writing. **QUICK-STEP SHALL NOT BE LIABLE FOR AND WILL NOT PAY CONSEQUENTIAL, INCIDENTAL OR SPECIAL DAMAGES OF ANY KIND WHATSOEVER UNDER THIS WARRANTY. PLEASE NOTE:** Some states do not allow the exclusion or limitation of incidental or consequential damages, or limitations on how long an implied warranty lasts, so the above limitation or exclusion may not apply to you. Except for these rights, the remedies provided under these warranties state the entire limit of Quick-Step's responsibilities.

For service under this warranty please contact your local Lowe's store. Describe the problem and in many cases, they can provide you with a solution.

For installation, maintenance and technical questions please call (888) 387-9882.

Quick-Step Studio laminate flooring is manufactured by

Unilin Flooring North America LLC  
550 Cloniger Drive  
Thomasville, NC 27360

Edition Date: 03/08/2021