

Café™ 36" Built-In Gas Cooktop

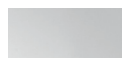
CGP95363MS2 / CGP95362MS1

C A F É

DISTINCT BY DESIGN™



ALSO
AVAILABLE IN



CGP95362MS1
Stainless Steel with
Brushed Stainless
knobs

FEATURES & BENEFITS

Sear, fry and sautee on a **20,000 BTU triple ring burner**

Enjoy peace of mind with a touch of style thanks to **white LED backlit, heavy-duty knobs** that let you know when a burner is activated at a glance

Get the most from your cooktop and eliminate the need for extra cookware with an **extra-large, integrated cooktop griddle**

When you're updating your kitchen, attention to detail is a priority. That's why Café cooktops are guaranteed for an exact fit or Café Appliances will pay up to \$100 toward modifications

Always get your hollandaise just right with a **simmer burner** that provides low, even heat

Easily move heavy cookware across the surface without worry, thanks to **continuous, cast-iron burners**

Keep your kitchen sparkling, even when there's a spill with **sealed cooktop burners** that contain messes for easy cleanup

Prevent unintended burner activation with **control lock capability**

Enjoy the party without worrying about clean up, thanks to **dishwasher-safe grates**

APPEARANCE

| | |
|----------------------------|--------------------------------------|
| Control Knobs | Dishwasher Safe White LED Backlit |
| Cooktop Burner Grate Color | Matte Black |

FEATURES

| | |
|-------------------------------|--------------------------------------|
| Cooktop Burner Type | 5 Sealed |
| Cooktop Surface | Deep Stainless Steel |
| Ignition System | Electronic |
| Burner - Left Front | 9,500 BTU |
| Burner - Left Rear | 9,500 BTU |
| Burner - Right Front | 15,000 BTU Power Boil |
| Burner - Right Rear | 5,000 BTU |
| Burner - Center | 20,000 BTU Tri-ring Power Boil |
| Control Type | Knob |
| Cooktop Control Features | Child Lock |
| Control Location | Front Center |
| Cooktop Burner Grate Features | Continuous Grates Dishwasher Safe |
| Cooktop Burner Grate Material | Edge-to-Edge Grates Heavy Cast |
| Fuel Type | Natural Gas (factory set) |
| Valves (Degree of Turn) | 270 |

POWER/RATINGS

| | |
|--|--|
| Burner BTU Ratings (000's/BTU) - LP Gas | (1) 18.0 (1) 15.0 (2) 9.5 (1) 5.0 |
| Burner BTU Ratings (000's/BTU) - Natural Gas | (1) 20.0 (1) 15.0 (2) 9.5 (1) 5.0 |
| Volts/Hertz/Amps | 120V 60Hz 5A |

WEIGHTS & DIMENSIONS

| | |
|--|-----------------|
| Approximate Shipping Weight | 57 lb |
| Cabinet Width | 36 in |
| Cutout Dimensions Width x Depth (In.) | 33-7/8 x 19-1/8 |
| Net Weight | 51 lb |
| Overall Depth | 21 in |
| Overall Height | 5 1/2 in |
| Overall Width | 36 in |

ACCESSORIES

| | |
|-------------------------|----------------------|
| Stainless Steel Cleaner | Included |
| Griddle | Cast Iron - Included |
| LP Conversion Kit | Included |

Café™ 36" Built-In Gas Cooktop

CGP95363MS2 / CGP95362MS1

CAFÉ

DISTINCT BY DESIGN™

WARRANTY

| | |
|----------------|---------------------------------------|
| Parts warranty | Limited 1-year entire appliance |
| Labor warranty | Limited 1-year entire appliance |
| Warranty notes | See written warranty for full details |

DIMENSIONS AND INSTALLATION

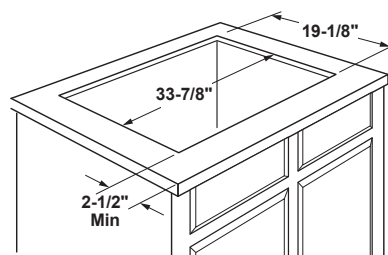
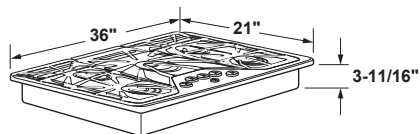
AGA Requirement: All gas cooktop models require 7/16" free area below cooktop height to combustible material. Requires 18" minimum from countertop to adjacent overhead cabinets.

Note: If installing with Telescopic Downdraft System, consult both cooktop and downdraft installation instructions packed with product before installing. Cooktop gas/electric supply may need to be re-routed to install downdraft.

Electrical Rating: 120V, 60Hz, 5A

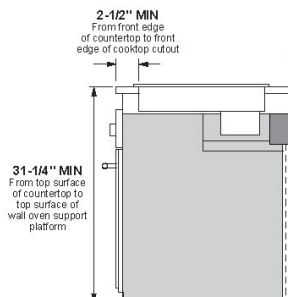
Installation With Single Wall Oven Information: 36" Gas cooktops are approved for use over select 30" Wall Ovens and Warming Drawers. Refer to cooktop and wall oven/warming drawer installation instructions packed with product for current dimensional data.

Installation Information: Before installing, consult installation instructions, packed with product, for current dimensional data.

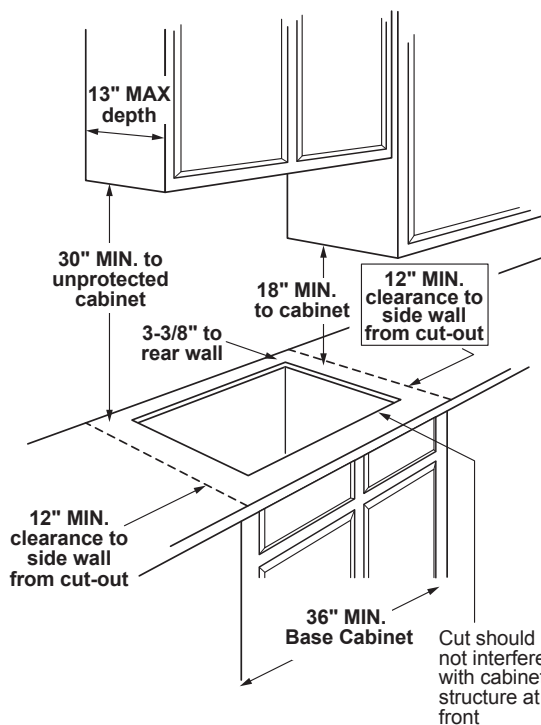


Installation above a wall oven

INSTALLATION ABOVE A WALL OVEN



Dimension and installation information are shown in inches.
*Allow 5-3/4" depth at rear for electrical and gas connections



ADDITIONAL ACCESSORIES



CXCG1K0PMBZ
Brushed Bronze
Knobs



CXCG1K0PMSS
Brushed Stainless
Knobs



CXCG1K0PMBT
Brushed Black
Knobs



CXCG1K0PMCU
Brushed Copper
Knobs



CXCG1K0PMCG
Brushed Brass
Knobs



CXCG1K0PMFB
Flat Black
Knobs