



## QUICK START GUIDE

### OWNER'S MANUAL

SAFETY, INSTALLATION, OPERATION & PARTS

AL75 SERIES

**SAND FILTRATION TECHNOLOGY**

**PLEASE CALL 877-278-2797**

**DO NOT RETURN TO STORE**



### **WARNING**

This equipment must be installed and serviced by a qualified technician in accordance with all applicable codes and ordinances. Improper installation can create hazards which could result in property damage, serious injury or death. Improper installation will void the warranty.

**The NOTICE label indicates special instructions that are important but not related to hazards.**

#### **Notice to Installer**

This manual contains important information about the installation, operation and safe use of this product. Once installation is complete, this manual must be given to the owner/operator of this equipment.



## **SAFETY INFORMATION**

**READ ALL WARNINGS BELOW. FAILURE TO DO SO COULD RESULT IN SERIOUS PERSONAL INJURY OR DEATH**

**\*RISK OF SUCTION ENTRAPMENT HAZARD, WHICH, IF NOT AVOIDED CAN RESULT IN SERIOUS INJURY OR DEATH. DO NOT BLOCK SUCTION AT THE PUMP OR IN THE POOL AS THIS CAN CAUSE SEVERE INJURY OR DEATH**

1. Sand Filters are designed to work with water at a temperature > than 32° F and < than 113°F.  
The filter should never be operated outside of these temperatures or damage may occur.
2. The installation should be carried out in accordance to the safety instructions of swimming pools and the specific instructions for each location.
3. The user should ensure that the installation is carried out by qualified authorized professionals and adhere to local code & regulations. Avoid Electrical Shock – Do Not Use power extension cords.
4. Connect ONLY to a Ground-Fault Circuit Interrupter (GFCI) power outlet. Consult a qualified, professional electrician for safe and proper installation of the required electrical outlet.
5. The operating safety of the filter is only guaranteed if the installation and operation instructions are correctly followed. CAUTION – Check to ensure that air is out of the system before operation. Any trapped air can cause the tank cover to explode which could result in death, serious injury, or damage to the system.
6. To reduce the risk of injury, do not permit children to use this product. Install the product at least 10 feet away from the pool to prevent children from using the system to access the pool.
7. Incorrectly installed equipment may fail, causing severe injury, property damage or death.
8. Chemicals and fumes can weaken swimming pool/spa equipment. Corrosion can cause filters and other equipment to fail, resulting in severe injury, property damage or death. Do not store pool chemicals near your equipment. Any modification of the filter requires the prior consent from the supplier's original replacement parts and accessories authorized by the manufacturer to ensure a high level of safety. The supplier assumes no liability for the damage and injuries caused by unauthorized replacement parts and accessories.
9. In the event of defective operation or fault, contact 877-278-2797 immediately for assistance.
10. DO NOT OPERATE THE SYSTEM WHILE THE POOL IS IN USE.
11. Never Allow Children to Operate this Equipment

## **How the Sand Filter/Pump Works**

Incoming water from the piping system is automatically directed by the Multiport Valve to the top of the filter bed. As the water is pumped through the filter sand, dirt and debris are trapped by the filter bed, and filtered out. The filtered water is returned from the bottom of the filter tank, through the Multiport Valve and back through the piping system.

## INSTALLATION

- \* Install filtration system including pump, filter tank and multiport valve.
  - \* The filter system should be installed as close as possible to the swimming pool and preferably at a minimum level of 2 feet below the surface of the water in the swimming pool.
- Make sure there is drainage available at the location where the filter will be installed.

### PUMP

1. Only qualified, licensed personnel should install pump and wiring.
2. Electrical Contractors PLEASE NOTE: All 115 volt 60Hz pump must be wired to the main power supply, by a licensed professional.
3. Allow for gate valve in suction piping.
4. Pump suction and discharge connections have moulded in thread stops, do not try to screw pipe in beyond these stops.

### FILTER TANK and MULTI-PORT VALVE

1. Loading the sand media. Filter sand media is loaded through the top opening of the filter.
  - a. Loosen the plastic clamps from tank neck.
  - b. Cap internal pipe with plastic cap to prevent sand from entering it.
  - c. We recommend filling tank approximately 1/2 way with water to provide a cushion effect when the filter sand is poured in. This helps protect the under-drain laterals from excessive shock.
  - d. Carefully pour in correct amount and grade of filter sand. Be sure center pipe remains centered in opening.

Sand surface should be leveled and should come to about the middle of the filter tank. Remove plastic cap from internal pipe.

2. Assemble filter multi-port valve to filter tank.
  - a. Insert filter multi-port valve (with O'ring in place) into the tank neck, taking care that the center pipe slips into the hole in the bottom of the valve.
  - b. Place two plastic clamps around valve flange and tank neck and tighten just enough so that the valve may be rotated on tank for final positioning.
  - c. Carefully screw pressure gauge (with O'ring in place) into tapped hole in valve body. Do not over-tighten.

d. Connect pump to control valve opening marked PUMP with hose. After connections are made, tighten clamps with screwdriver, tapping around clamp with screwdriver handle to help seat valve flange clamp.

3. Make return to pool pipe connection to multi-port valve opening marked RETURN and complete other necessary plumbing connections, suction lines to pump, waste, etc.
4. To prevent water leakage, be sure all pipe connections are tight.

## INSTALL/START-UP OF FILTRATION

1. Be sure correct amount of filter media sand is in tank and that all connections have been made and are secure.
2. Depress multi-filter valve handle and rotate to BACKWASH position. (To prevent damage to multi-port valve seal, always depress handle before turning.)
3. Prime and start pump. Never run pump dry! Running pump dry may damage seals, causing leakage and flooding! Fill pump with water before starting motor. Be sure all suction and return lines are open, allowing the filter tank to fill with water. Once water is flowing out of the waste line, run the pump for at least 1 minute. The initial back-washing of the filter is recommended to remove any impurities or fine sand particles in the sand media.
4. Turn pump off and set valve to RINSE position. Start pump and operate until water in sight glass is clear, about 1/2 to 1 minute. Turn pump off and set valve to FILTER position and restart pump. The filter is now operating in the normal filter mode, filtering dirt particles from the pool water.
5. Adjust pool suction and return valves to achieve desired flow. Check system and filter for water leaks and tighten connections, bolts, nuts, as required.
6. Note the initial pressure gauge reading when the filter is clean. (It will vary from pool to pool depending upon the pump and general piping system.) As the filter removes dirt and impurities from the pool water, the accumulation in the filter will cause the pressure to rise and flow to diminish. When the pressure gauge reading is 8 -10 PSI higher than the initial "clean" pressure you noted, it is time to backwash the filter (see BACKWASH under multi-filter valve functions).

NOTE: During initial clean-up of the pool water, it may be necessary to backwash frequently due to the unusually heavy initial load of dirt in the water!

## PRIMING PUMP

- ❖ Release all air from filter and piping system.
- ❖ In a flooded suction system (water source higher than pump), pump will prime itself when suction and discharge valves are opened.
- ❖ If pump is not in a flooded suction system, unscrew and remove trap cover; fill trap and pump with water.
- ❖ Clean and inspect Ring; re-install on trap cover.
- ❖ Replace trap cover on trap; turn clockwise to tighten cover.

**NOTICE:** Tighten trap cover by hand only .Pump should prime now. Priming time will depend on vertical length of suction lift and horizontal length of suction piping.

### HOW TO USE

1. Inspect all the connections have been made correct and are secure.
2. Depress top mount valve handle and rotate to BACKWASH position.
3. Prime and start pump according to pump instructions.

**NOTE:** ALL SUCTION AND DISCHARGE VALVES MUST BE OPENING WHEN STARTING THE SYSTEM. FAILURE TO DO SO COULD CAUSE SEVERE PERSONAL INJURY. MAKE SURE THE FILTER VESSEL ARE FULLY FILLED THE WATER BEFORE STARTING UP THE PUMP OR IT WILL CAUSE THE PUMP DAMAGED.

4. Once water flow is steady out the waste line, run the pump for at least 2 minutes. The initial back-washing of the filter is recommended to remove any impurities of fine sand particles in the sand media.
5. Turn pump off and set valve to RINSE position. Start pump and operate until water in sight glass is clear---about 1/2 to 1 minute. Turn pump off, set valve to FILTER position and restart pump. Your filter is now operating in the normal filter mode, filtering particles from the pool water.

### NOTES:

1. Note the initial pressure gauge reading when the filter is clean. (it will vary from pool depending upon the pump and general piping system). As the filter removes dirt and impurities from the pool water, the accumulation in the filter will cause the pressure to rise and flow to diminish. When the pressure gauge reading is 8-10 PSI higher than the initial “clean” pressure you noted, it is the time to backwash (clean) the filter.
2. **IMPORTANT:** To prevent unnecessary strain on piping system and valving, always shut off pump before switching filter control valve position.
3. To prevent damage to the pump and filter and for proper operation of the system, clean pump strainer and skimmer baskets regularly.

### FILTER CONTROL VALVE FUNCTIONS:

**FILTER** - Set valve to FILTER for normal filtering. Also use for regular vacuuming.

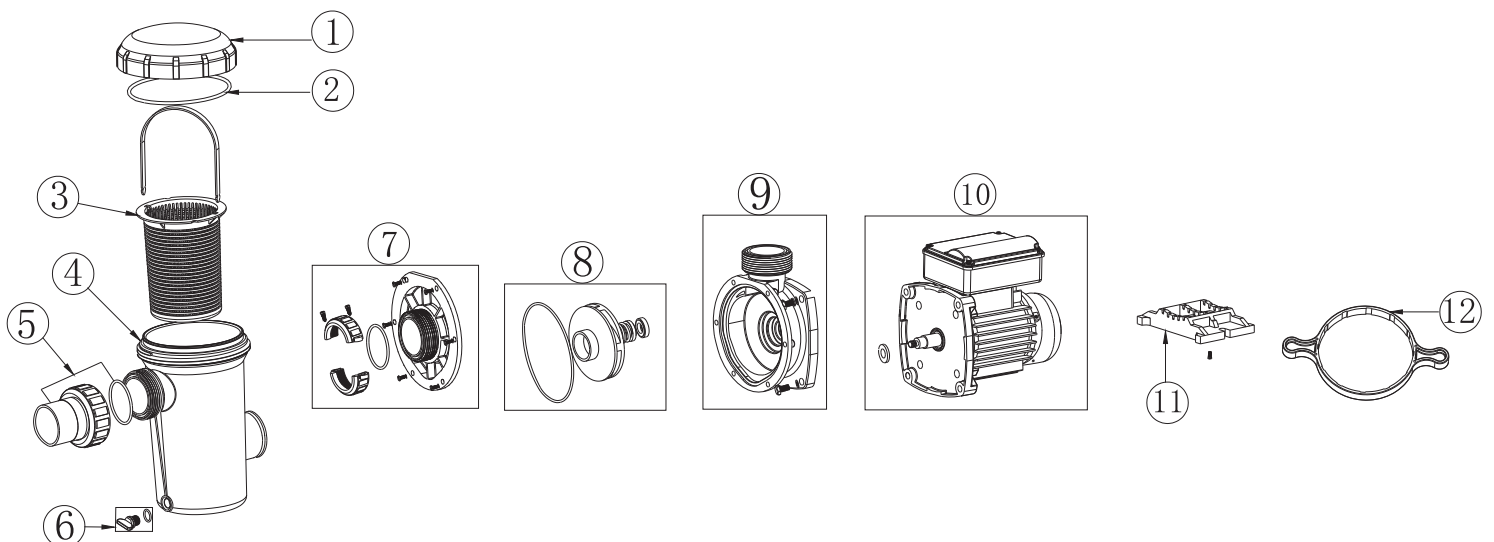
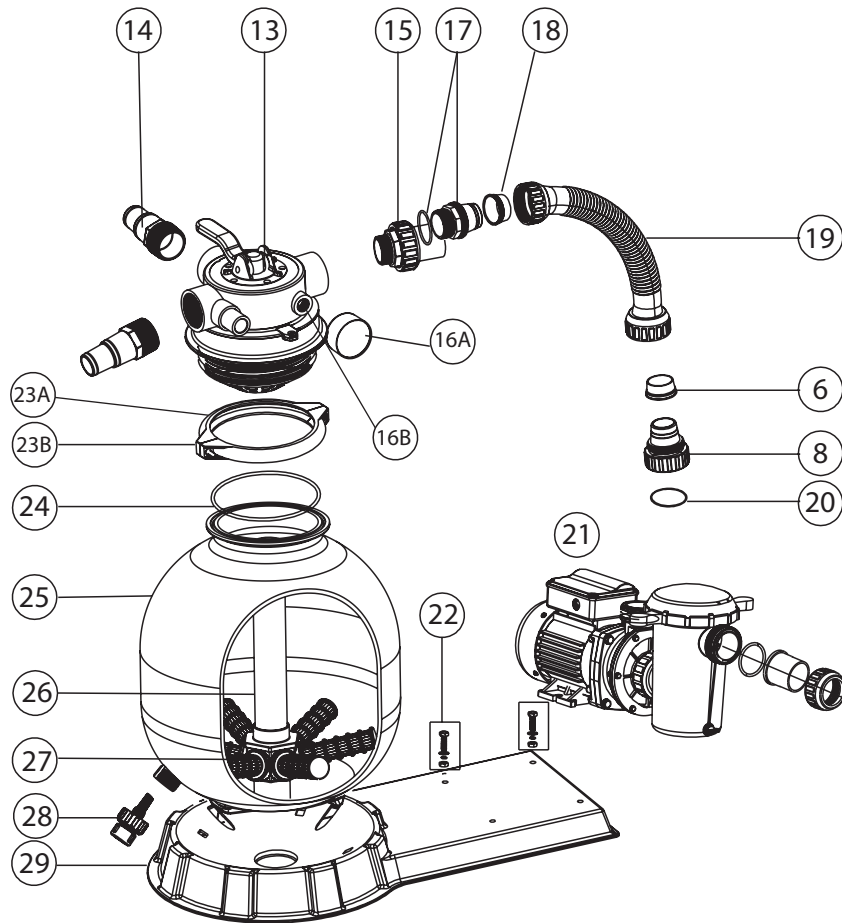
**BACKWASH** – For cleaning filter. When filter pressure gauge rises 8-10 PSI above start-up (clean pressure): Stop the pump, set valve to BACKWASH. Start pump and backwash until water in sight glass is clear. Approximately 2 minutes or less depending on dirt accumulation. Proceed to RINSE.

**RINSE** – After backwashing, with pump off, set valve to RINSE. Start pump and operate for about 1/2 to 1 minute. This ensures that all dirty water from backwashing is rinsed out of the filter to waste, preventing possible return to the pool. Stop pump, set valve to FILTER and start pump for normal filtering.

**WASTE** – To bypass filter for draining or lowering water level and for vacuuming heavy debris directly to waste.

## WARNING

- ! THIS FILTER OPERATES UNDER HIGH PRESSURE. WHEN ANY PART OF THE CIRCULATING SYSTEM (e.g., CLAMP, PUMP, FILTER, VALVES, ETC.) IS SERVICED, AIR CAN ENTER THE SYSTEM AND BECOME PRESSURIZED. PRESSURIZED AIR CAN CAUSE THE LID OR VALVE TO BE BLOWN OFF WHICH CAN RESULT IN SEVERE INJURY, DEATH, OR PROPERTY DAMAGE
- ! TURN PUMP OFF BEFORE CHANGING VALVE POSITION.
- ! TO PREVENT DAMAGE TO THE PUMP AND FOR PROPER OPERATION OF THE SYSTEM, CLEAN PUMP STRAINER AND SKIMMER BASKETS REGULARLY.
- ! DO NOT UNSCREW SCREWS OF FLANGE CLAMP WHILE PUMP IS RUNNING.



Parts Listing

Ref. No.	Part No.	Description	QTY
1	10061-ACC	AL75 Pump Lid	1
2	10062-ACC	AL75 Pump Lid O-ring	1
3	10063-ACC	AL75 Basket w/ Handle	1
4	10064-ACC	AL75 Pump Basket Housing (Pre-filter)	1
5	10065-ACC	AL75 Suction 1.5" Union only	1
6	10066-ACC	AL75 Pool Pump drain plug w/ o-ring	1
7	10067-ACC	AL75 Inter-locking kit set	1
8	10068-ACC	AL75 Impeller & Shaft Seal Kit	1
9	10069-ACC	AL75 Seal Plate	1
10	10070-ACC	AL75 Motor Kit Set (.75hp)	1
11	10071-ACC	AL75 Pump Base	1
12	10072-ACC	AL75 Key (Tool) for Pump Lid	1
13	10073-ACC	AL75 4-way Valve	1
14	10074-ACC	AL75 32mm to 38mm Hose Barb Adapter w/ O-ring	1
15	10075-ACC	AL75 Valve Inlet 1.5" Union Set w/ O-ring	1
16A	10076-ACC	AL75 Plastic Pressure Gauge w/ O-ring (28psi)	1
16B	10076-ACC2	AL75 Pressure Gauge Connector	1
17	10077-ACC	AL75 Hose Adapter (Pump discharge Hose to Valve Inlet Union)	1
18	10078-ACC	AL75 Rubber Sleeve Seal for Hose	1
19	10079-ACC	AL75 Plastic Hose from Pump to Filter w/ Nuts	1
20	10080-ACC	AL75 Pump Unions O-rings	2
21	10081-ACC	AL75 Complete Pump	1
22	10082-ACC	AL75 Mounting Hardware (Pump to Base)	2
23A	10083-ACC	AL75 Half Clamps	1
23B	10083-ACC2	AL75 M6*50 Screw with Nut for Valve Half Clamp	1
24	10084-ACC	AL75 Valve Half Clamp O-ring	1
25	10085-ACC	AL75 Filter Tank Body	1
26	10086-ACC	AL75 Center Pipe (15 3/4" Long)	1
27	10087-ACC	AL75 Laterals (4.5" Long)	6
28	10088-ACC	AL75 Filter Tank Drain Plug Set	1
29	10089-ACC	AL75 Combo (Pump & Filter) Base	1
30	98118-001	40mm 1-1/2" Soft Side Pool Adapter & O-ring	2



### *Limited Warranty*

For one (1) year from the date of purchase, manufacturer will repair or replace, at its option, for the original owner any parts of its filters ("Product") which are found upon examination to be defective in materials or workmanship. This Limited Warranty covers parts only for a period of one (1) year. Please call 1-877-278-2797 for instructions. Be prepared to provide a receipt, the model number and serial number when exercising this limited warranty. Purchaser must pay all transportation charges on Products or parts submitted for repair or replacement. All non-warranty service charges are the responsibility of the original owner. Failure to pay for non-warranty service charges will void this Limited Warranty.

This Limited Warranty does not cover Products that have been damaged as a result of accident, freezing, abuse, misuse, neglect, improper installation, improper maintenance or failure to operate in accordance with written instructions. All maintenance and service must be performed by service agents approved. Any unauthorized alteration or repairs will void this Limited Warranty.

THERE IS NO OTHER EXPRESS WARRANTY. IMPLIED WARRANTIES, INCLUDING THOSE OF MERCHANTABILITY AND FITNESS FOR A PARTICULAR PURPOSE, ARE LIMITED TO ONE (1) YEAR FROM THE DATE OF PURCHASE. THIS IS THE EXCLUSIVE REMEDY AND ANY LIABILITY FOR ANY AND ALL INDIRECT OR CONSEQUENTIAL DAMAGES OR EXPENSES WHATSOEVER IS EXCLUDED.

Some states do not allow limitations on how long an implied warranty lasts, or do not allow the exclusions or limitations of incidental or consequential damages, so the above limitations might not apply to you. This limited warranty gives you specific legal rights, and you may also have other legal rights which vary from state to state.

In no event, whether as a result of breach of contract warranty, tort (including negligence) or otherwise, shall its suppliers be liable for any special, consequential, incidental or penal damages including, but not limited to loss of profit or revenues, loss of use of the products or any associated equipment, damage to associated equipment, cost of capital, cost of substitute products, facilities, services or replacement power, downtime costs, or claims of buyer's customers for such damages. This Limited Warranty does not include freight charges for equipment or component parts, to and from the factory, services such as maintenance or inspection, repair or damage due to negligence such as freezing conditions, incorrect installation, nor acts of God. The liability shall not exceed the repair or replacement of defective parts under this Limited Warranty. This Limited Warranty also does not include unnecessary service calls due to erroneous operational reports, external valve positions, or electrical service. If a non-warranty service call is made, and the homeowner is unwilling to pay for the service call, this Limited Warranty will be voided. This Limited Warranty is voided if the product is repaired or altered by any persons or agencies other than those authorized. This Limited warranty applies only within the continental USA. For warranty outside the continental USA.

You MUST retain your purchase receipt along with this form. In the event you need to exercise a warranty claim, you MUST present a copy of the purchase receipt at the time of service. Please call 1-877-278-2797 for service or return authorization and instructions.

DO NOT MAIL THIS FORM. Use this form only to maintain your records.

MODEL NO. \_\_\_\_\_ SERIAL NO. \_\_\_\_\_ INSTALLATION DATE \_\_\_\_\_