



SPECIFICATIONS

Electrical	Input Ratings	120-277VAC, 50/60 Hz 347VAC, 50/60 Hz (with 347 option)
	Output Ratings	120VAC, 800W, 6.7A - Tungsten, Standard Ballast, Electronic Ballast 277VAC, 1200W, 4.3A - Tungsten, Standard Ballast, Electronic Ballast 347VAC, 1500W, 4.3A - Tungsten, Standard Ballast, Electronic Ballast 120/277/347VAC, 1/4 HP - Motor
	Relay Type	Latching
	Low Voltage Output Ratings	0-10VDC, Sinks <50mA
	Standards/ Ratings	Energy Management Equipment, UL916 (E167435)

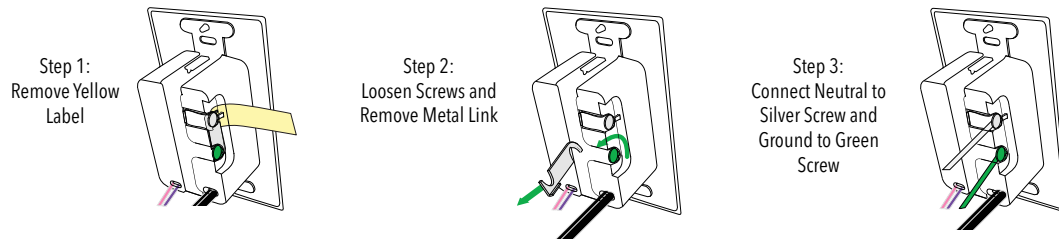
Mechanical	Dimensions	2.74"H x 1.68"W x 1.63"D (70mm x 43mm x 41mm)
	Mounting	Single-Gang Box
	Connection Type	Low-Voltage Leads, Line-Voltage Leads

Environmental	Warrantied Operating Temperature	32°F to 140°F (0°C to 60°C)
	Relative Humidity	Up to 90%, Non-Condensing
	Standards/ Ratings	RoHS

WIRING

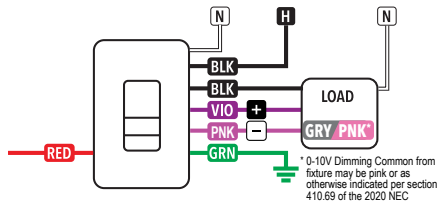
CONVERSION FROM GROUND ONLY (NO NEUTRAL) TO NEUTRAL WIRING

This product is pre-configured for wiring without a neutral; however, if connection to neutral is required by code, the unit easily converts in seconds.



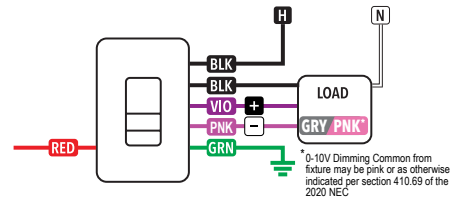
CONVERTIBLE NEUTRAL

SINGLE RELAY, 120-277 VAC

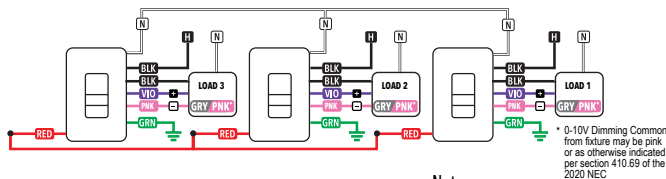


GROUND ONLY

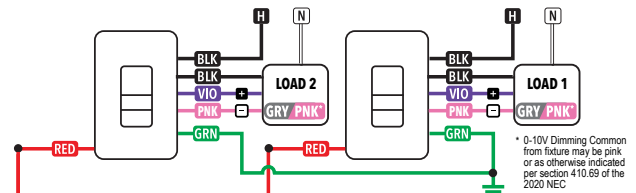
SINGLE RELAY, 120-277 VAC



SINGLE RELAY, MULTI-WAY CONFIGURATION, 120-277 VAC



SINGLE RELAY, MULTI-WAY CONFIGURATION, 120-277 VAC



WIRE COLOR KEY

120-277 VAC WIRING

BLK	- Line Input
BLK	- Line Output
VIO	- Low Voltage Dim Output (0-10 VDC)
PNK ¹	- Low Voltage Common (0-10VDC)
RED	- Low Voltage Communication Wire

347 VAC WIRING (-347 Option)

Orange (ORN) wires replace black (BLK) wires

Notes:

1. Some Pink wires may come as Gray

Notes:

- All load controls act in unison
- Black wires can be used interchangeably
- Violet and pink wires are not present on devices without D option
- Cap off violet and pink wires if dimming functionality is not being used
- Red Wire is not present on devices without MWO option
- Cap off red wire if Multi-Way functionality is not being used
- For ground Multi-Way Configurations ground must come from same source
- For neutral conversion Multi-Way Configurations power must come from the same panel
- Per NEC requirements, the 0-10V violet and pink wires must be installed as Class One.
- SPODMRA MWO paired with WSXA MWO will act accordingly with WSXA occupancy settings
- The 0-10V control wires must not exceed 250 ft (76 m) in length and must be sized at no less than 20 AWG
- The Low Voltage Communication BUS must not exceed 250 ft (76 m) in length and must be sized at no less than 20 AWG
- Dimming wires from individual MWO devices should only connect with fixture/driver dimming wires and never to another MWO device



OPERATIONAL SETTINGS

(Press and hold on to initiate programing "LED flashes", then input desired settings.)

2 = Occupancy Time Delay

The length of time an occupancy sensor will keep the lights from dimming to low trim (S-Code 16) after it last detect occupancy

1 - Test Mode**	5 - 7.5 min	9 - 17.5 min	13 - 27.5 min
2 - 30 sec	6 - 10.0 min*	10 - 20.0 min	14 - 30.0 min
3 - 2.5 min	7 - 12.5 min	11 - 22.5 min	
4 - 5.0 min	8 - 15.0 min	12 - 25.0 min	

19 = Fade On Rate

Time required for light to reach preset level.

1 - 0.75 sec*	3 - 5 sec
2 - 2.5 sec	4 - 15 sec

9 = Restore Defaults

Returns all functions to original settings.

- 1 - Maintain Current*
- 2 - Restore Defaults

20 = Fade Off Rate

Time required for light to turn Off.

1 - 0.75 sec	3 - 5 sec
2 - 2.5 sec*	4 - 15 sec

15 = Dimming Range Max (High Trim)

The maximum output level of the sensor.

1 - 0 VDC	5 - 3 VDC	9 - 7 VDC	13 - 10 VDC*
2 - 1 VDC	6 - 4 VDC	10 - 8 VDC	
3 - 1.5 VDC	7 - 5 VDC	11 - 9 VDC	
4 - 2 VDC	8 - 6 VDC	12 - 9.1 VDC**	

**Default for EZ option

16 = Dimming Range Min (Low Trim)

The minimum output level of the sensor.

1 - 0 VDC	5 - 3 VDC	9 - 7 VDC	13 - 10 VDC
2 - 1 VDC*	6 - 4 VDC	10 - 8 VDC	
3 - 1.5 VDC**	7 - 5 VDC	11 - 9 VDC	
4 - 2 VDC	8 - 6 VDC	12 - 9.1 VDC	

**Default for EZ option

21 = Start Level

Level of light output when occupancy is initially detected. Not applicable in Automatic Dimming Control (ADH) mode.

1 - 10%	4 - 40%	7 - 70%	10 - 100%*
2 - 20%	5 - 50%	8 - 80%	
3 - 30%	6 - 60%	9 - 90%	

* DEFAULT SETTING

WARRANTY

5-year limited warranty. Complete warranty terms located at
www.acuitybrands.com/CustomerResources/Terms_and_conditions.aspx