

SAMSUNG SmartThings Hub



The brain of your smart home.

Add smartness to your home with a SmartThings Hub that connects wirelessly with a wide range of smart devices and makes them work together.

Technical Information:

- Power: In-wall power adapter with about 10 hours of backup power from 4 AA batteries (included)
- Communication Protocol: ZigBee, Z-Wave, IP
- Range: 50-130 feet depending on your home's construction
- Operating Temperature: 41 to 95°F
- Dimensions: 4.2 x 4.9 x 1.3 inches
- Weight: 7.68 ounces
- Color: White
- Model Number: F-H-ETH-001
- UPC: 856418004167
- Warranty: One-year limited warranty

A hallway that can take chores off your plate.

"I made a Goodbye Routine in my SmartThings app that turns off all the lights and turns down the thermostat at the touch of a button."



Connected Lights

Connected Thermostat

Requires SmartThings Hub or compatible device with SmartThings Hub functionality. Products sold separately.



A door that knows when to lock itself.

"I put a SmartThings Multipurpose Sensor on my front door that activates the lock when it's been closed for a few minutes."



SmartThings Multipurpose Sensor

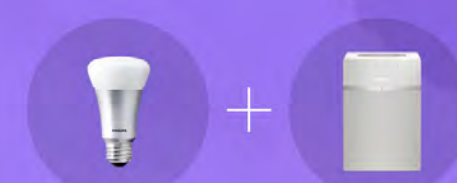
Connected Door Lock

Requires SmartThings Hub or compatible device with SmartThings Hub functionality. Products sold separately.



A living room that can get the party started.

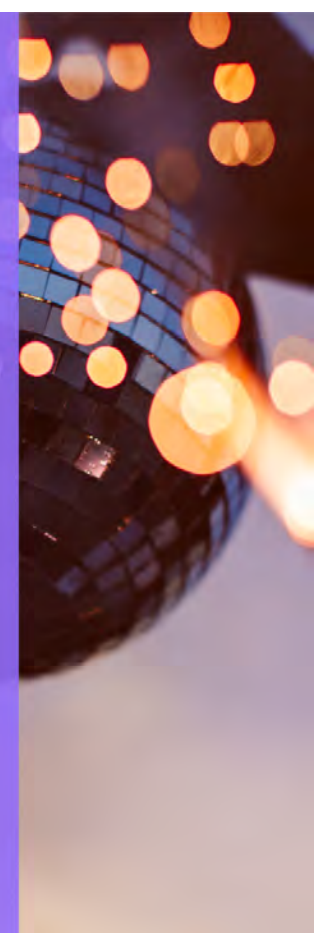
"I made a Party Routine in my SmartThings app that adjusts the colors of my lights and turns on my music at the touch of a button."



Connected Lights

Connected Speaker

Requires SmartThings Hub or compatible device with SmartThings Hub functionality. Products sold separately.



SmartThings works with a wide range of connected devices including lights, speakers, locks, thermostats, sensors and more. Visit [SmartThings.com](https://www.smartthings.com) to see the full list of compatible devices.