



EN

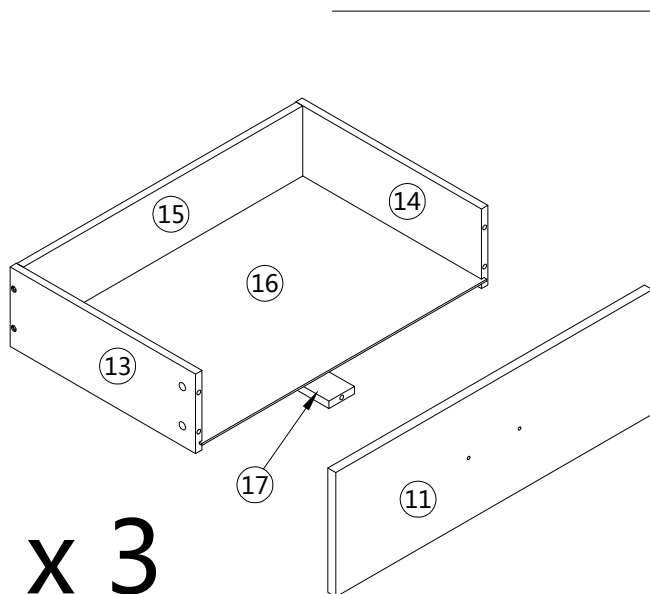
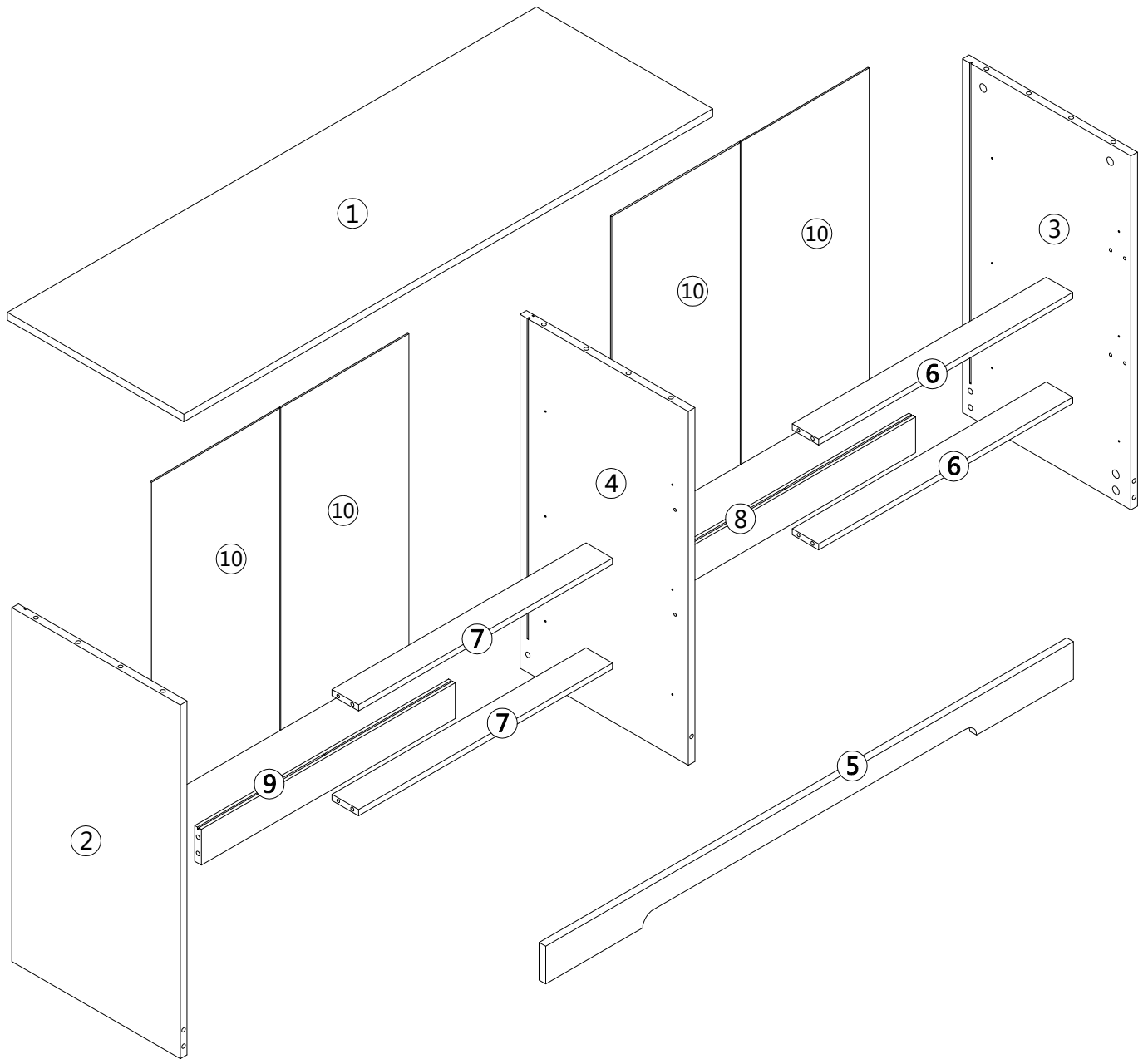
Thank you for purchase on our products, please contact us if you have difficulty with assembly or need replacement parts. customer service will assist you.

WARNING

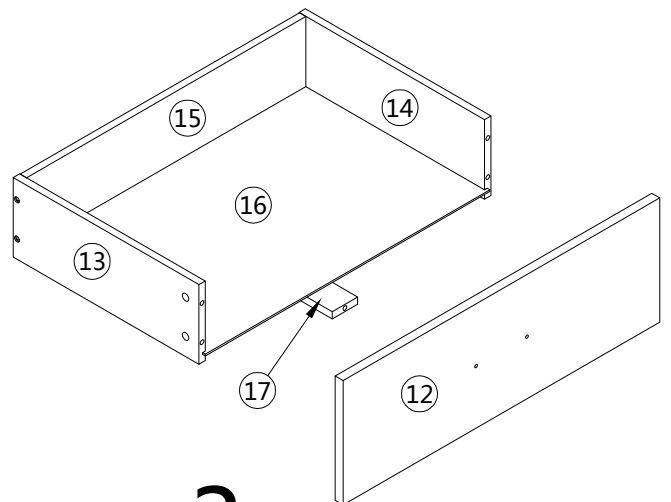
Serious or fatal injury may occur from unexpected assembly or use.

1. During the assembly process, keep all parts away from babies or children.
2. Always securely fix this product to the wall. Make sure the wall area to be drilled is free from hidden electrical wires^ water and gas pipes.
3. Use of tip-over restraints may only reduce^ but not eliminate the risk of tip-over.
4. Unless specially designed to accommodatej do not set heavy objects on top of this product.
5. Place the heaviest items on the lowest shelf.
6. Never allow children to climb or bang on drawers, doors or shelves.

Parts List

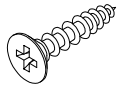


x 3



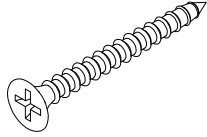
x 3

Hardware



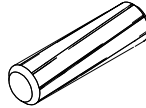
3.5 x 14MM

A x 68pcs



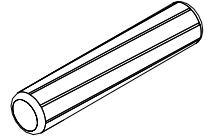
3.5 x 35MM

B x 30pcs



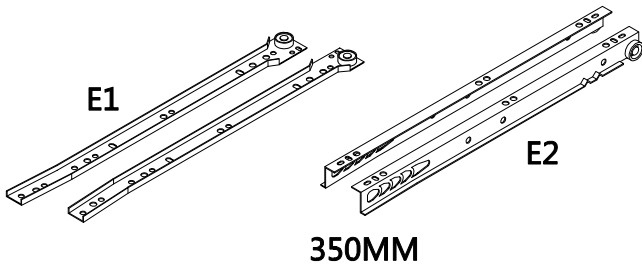
6 x 30MM

C x 6pcs



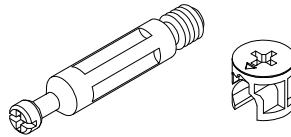
8 x 40MM

D x 6pcs



350MM

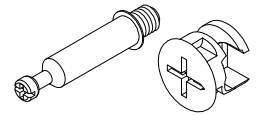
E x 6sets



F1

F2

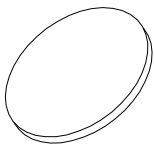
F x 18sets



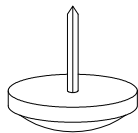
G1

G2

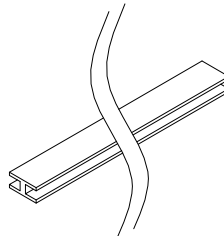
G x 38sets



H x 56pcs



J x 6pcs

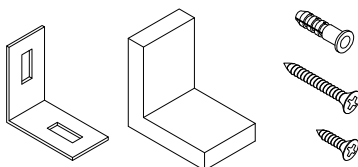


623MM

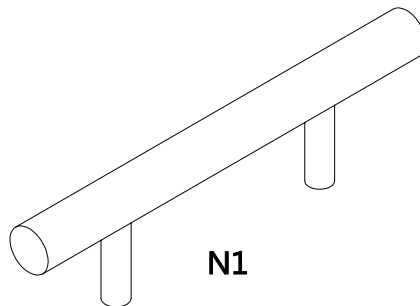
K x 2pcs



L x 20pcs



M x 2sets



N1



N2

N x 6sets

Step 1

A x 24



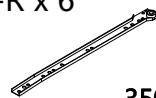
3.5 x 14MM

E1-L x 6

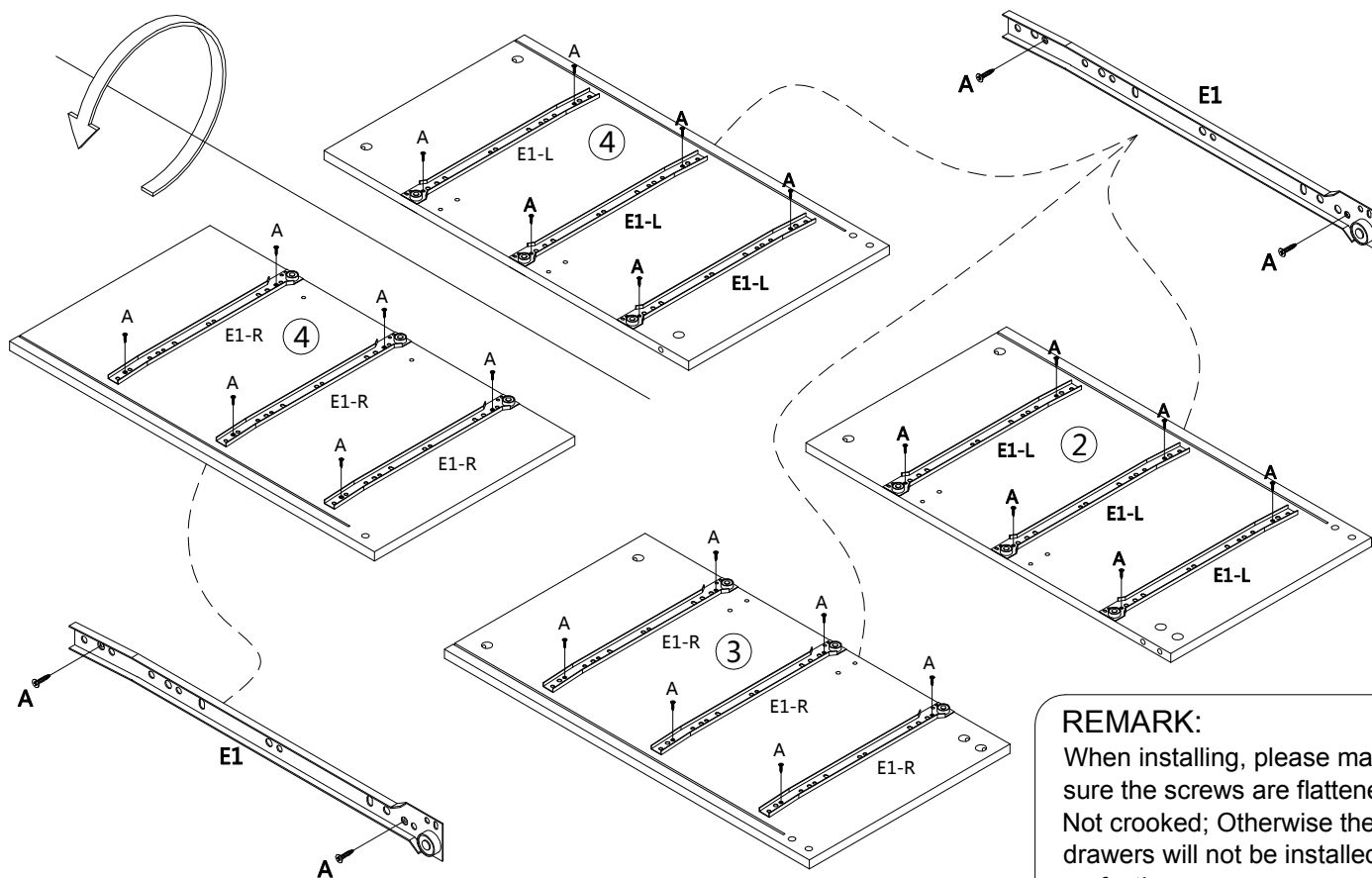


350MM

E1-R x 6



350MM

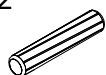


REMARK:

When installing, please make sure the screws are flattened, Not crooked; Otherwise the drawers will not be installed perfectly.

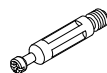
Step 2

D x 2

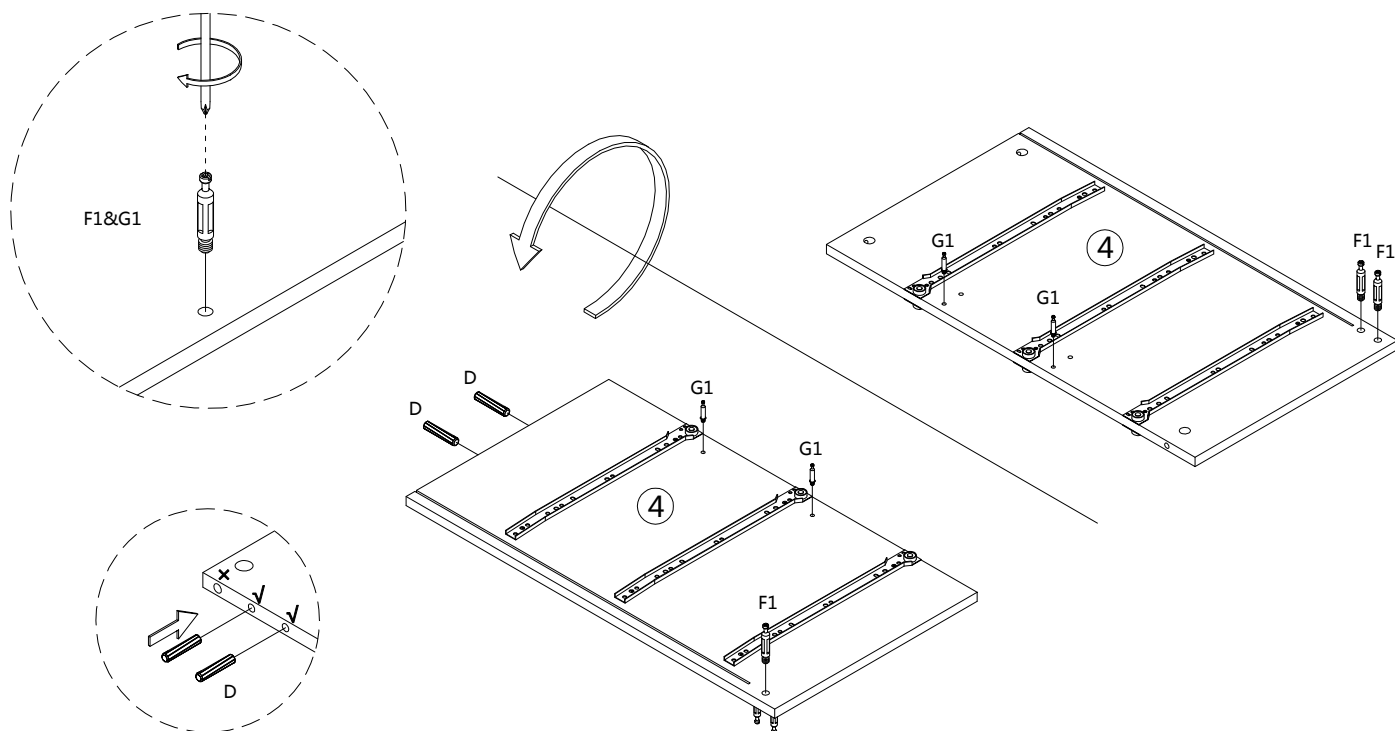


8 x 40MM

F1 x 3



G1 x 4



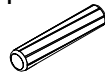
Step 3

C x 6



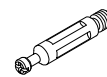
6 x 30MM

D x 4

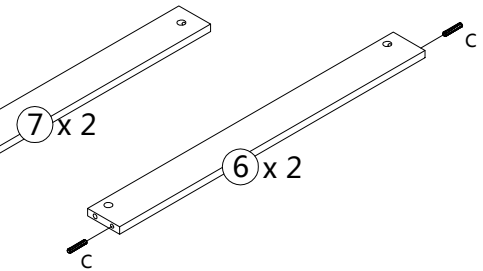
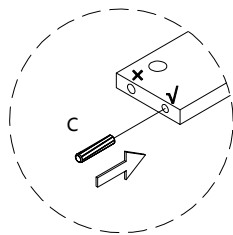
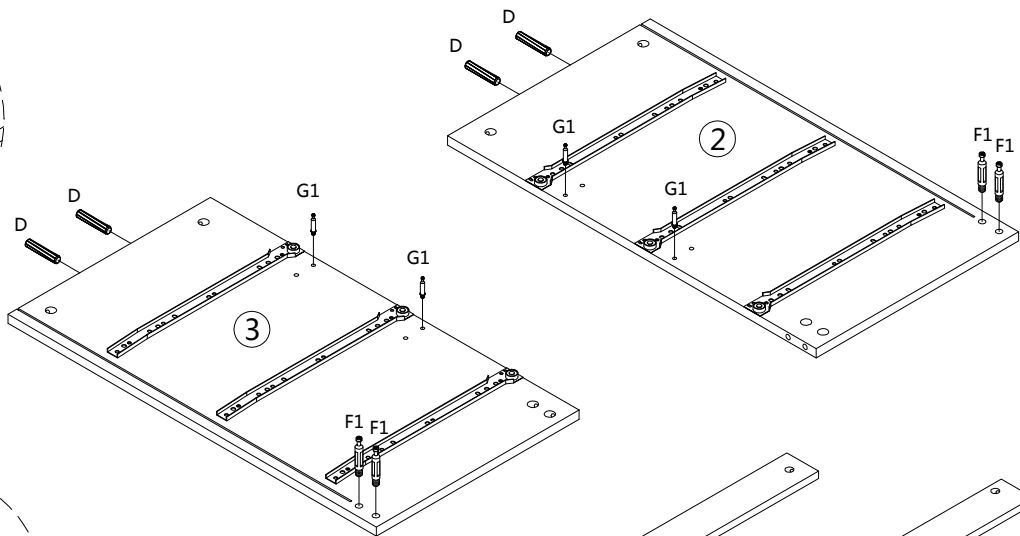
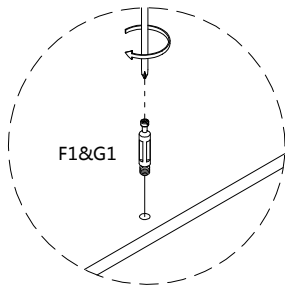


8 x 40MM

F1 x 4



G1 x 4

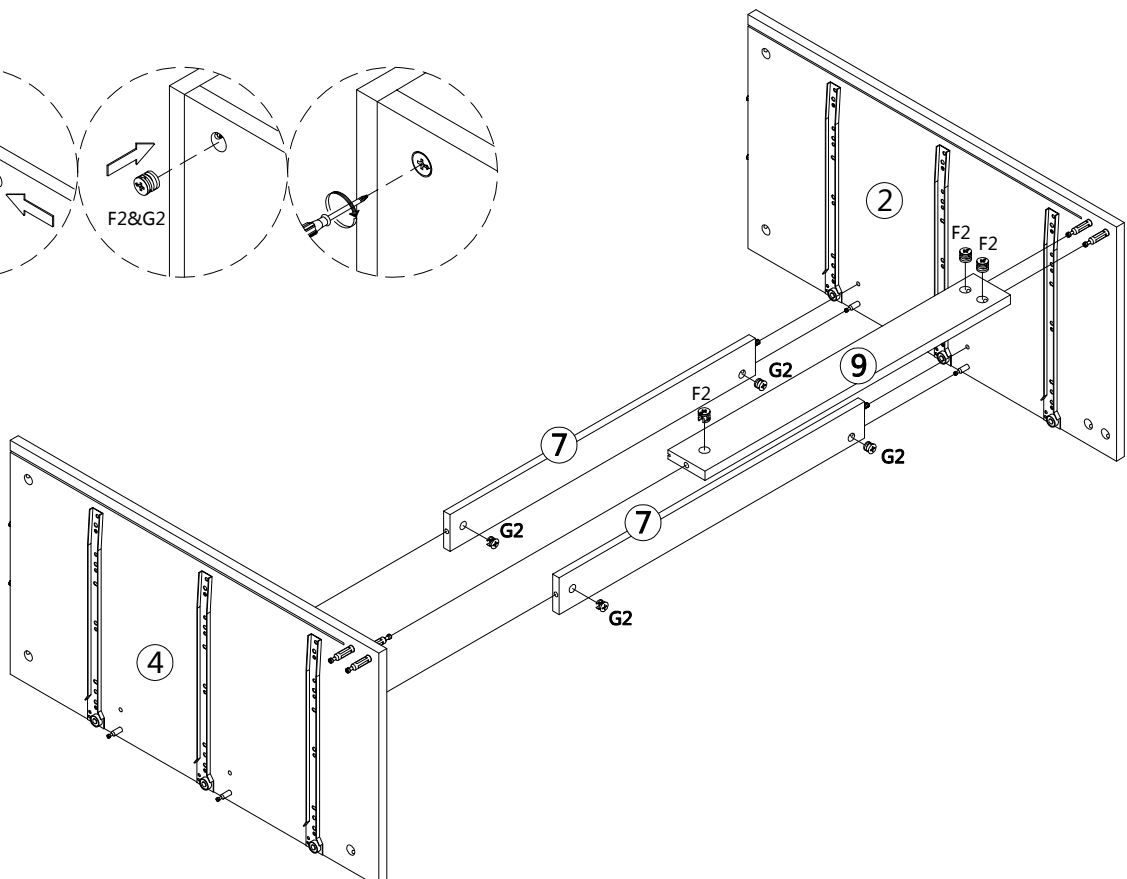
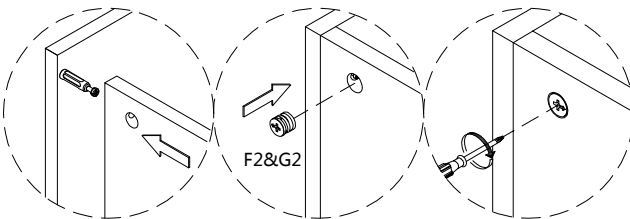


Step 4

F2 x 3



G2 x 4

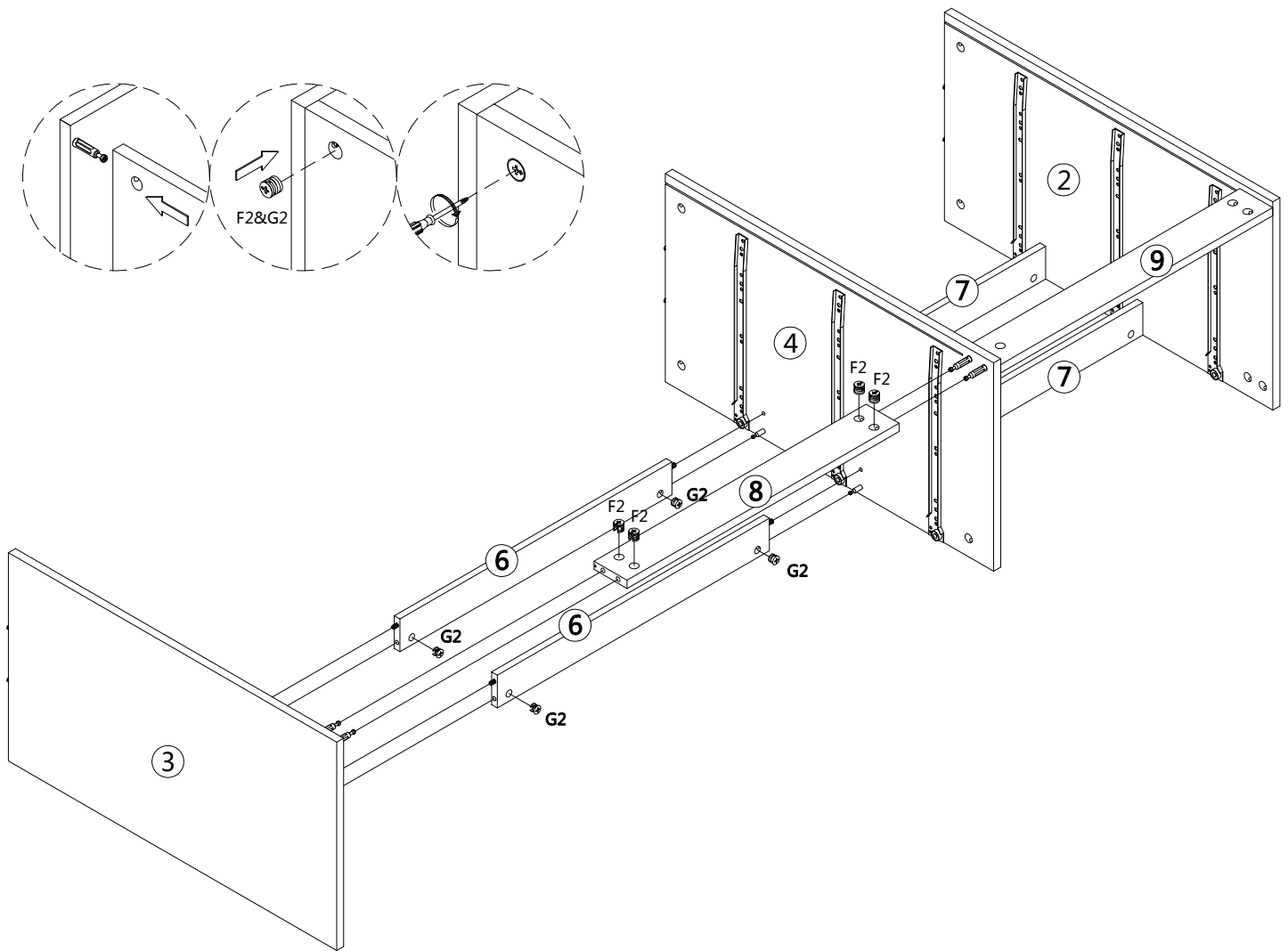


Step 5

F2 x 4

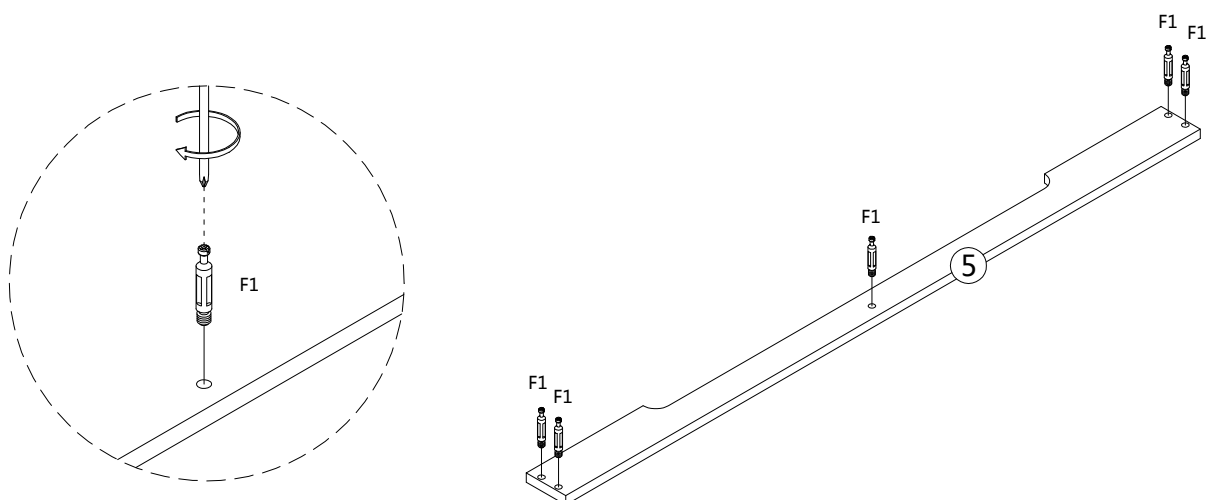
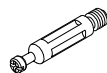


G2 x 4



Step 6

F1 x 5

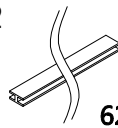


Step 7

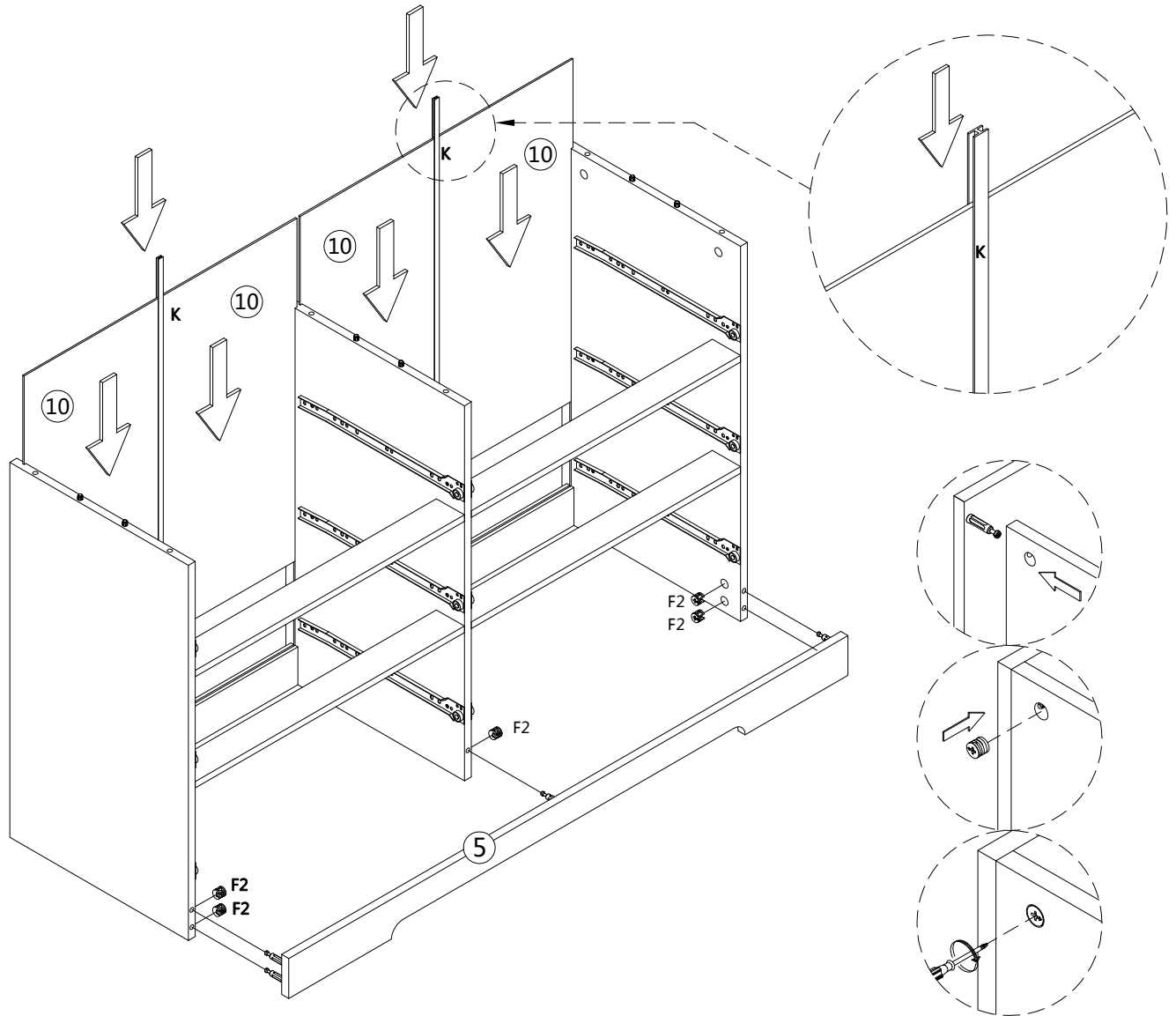
F2 x 5



K x 2

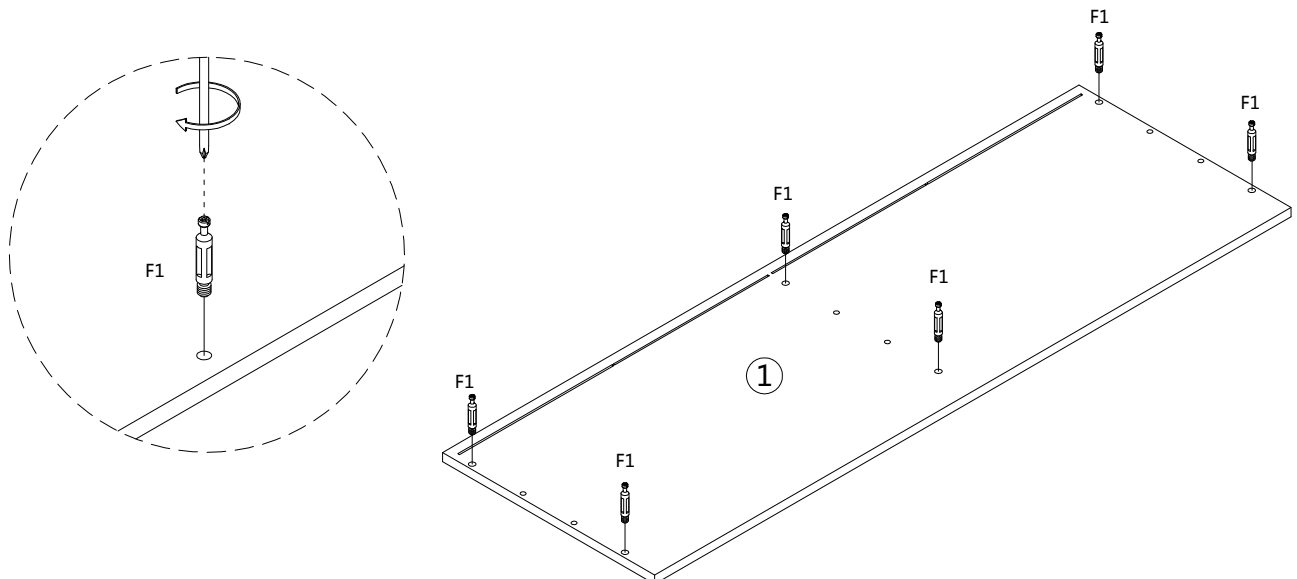
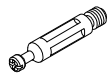


623MM



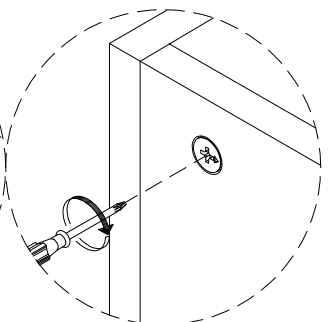
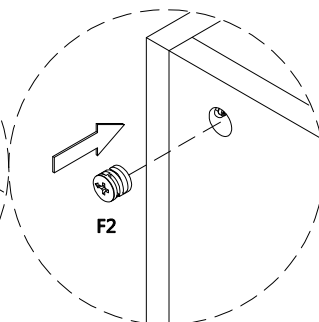
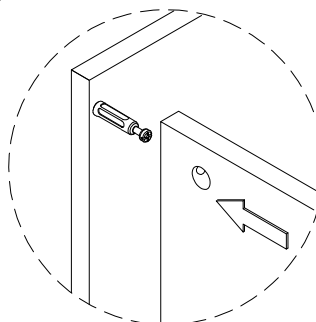
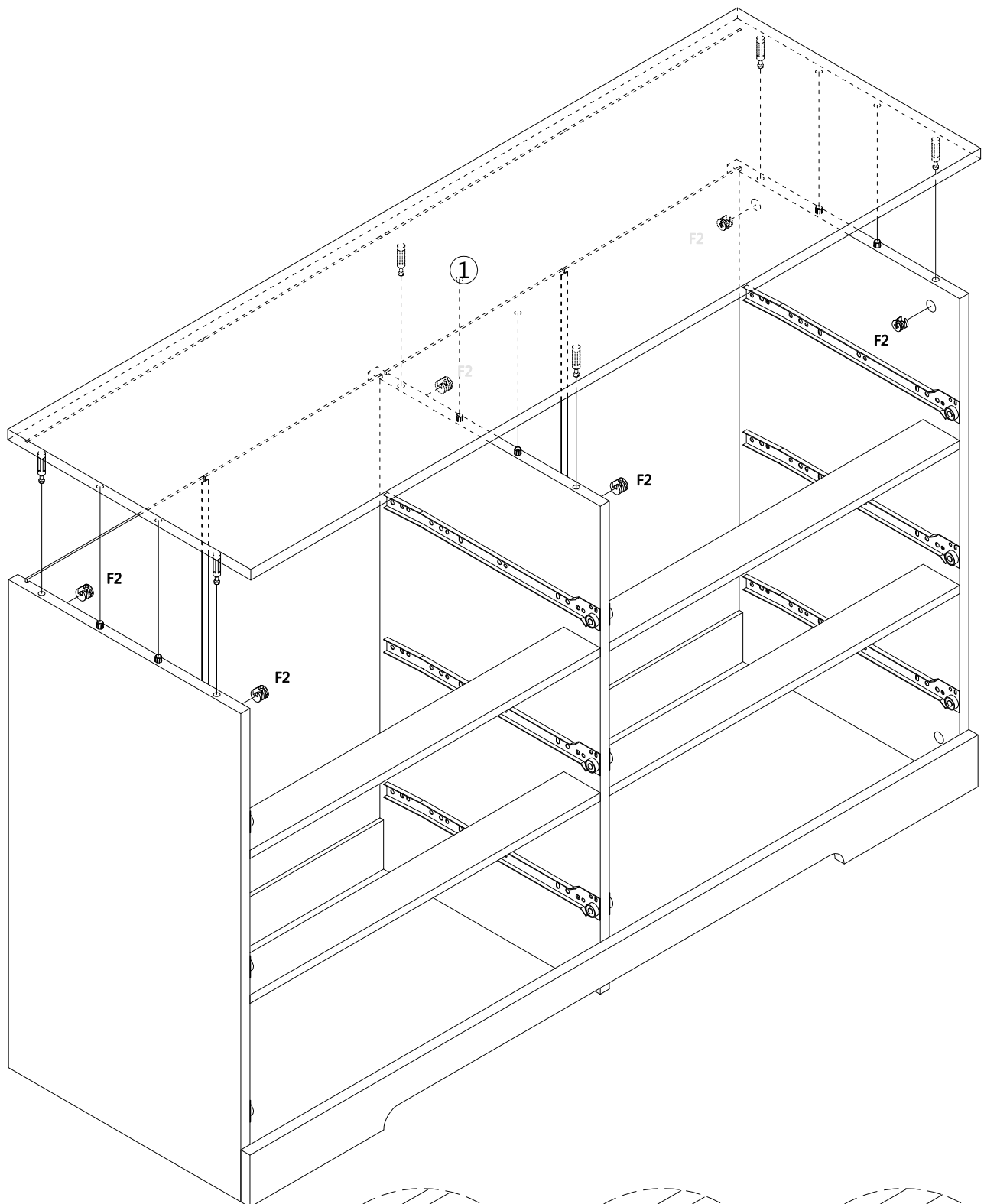
Step 8

F1 x 6



Step 9

F2 x 6



Step 10

A x 20

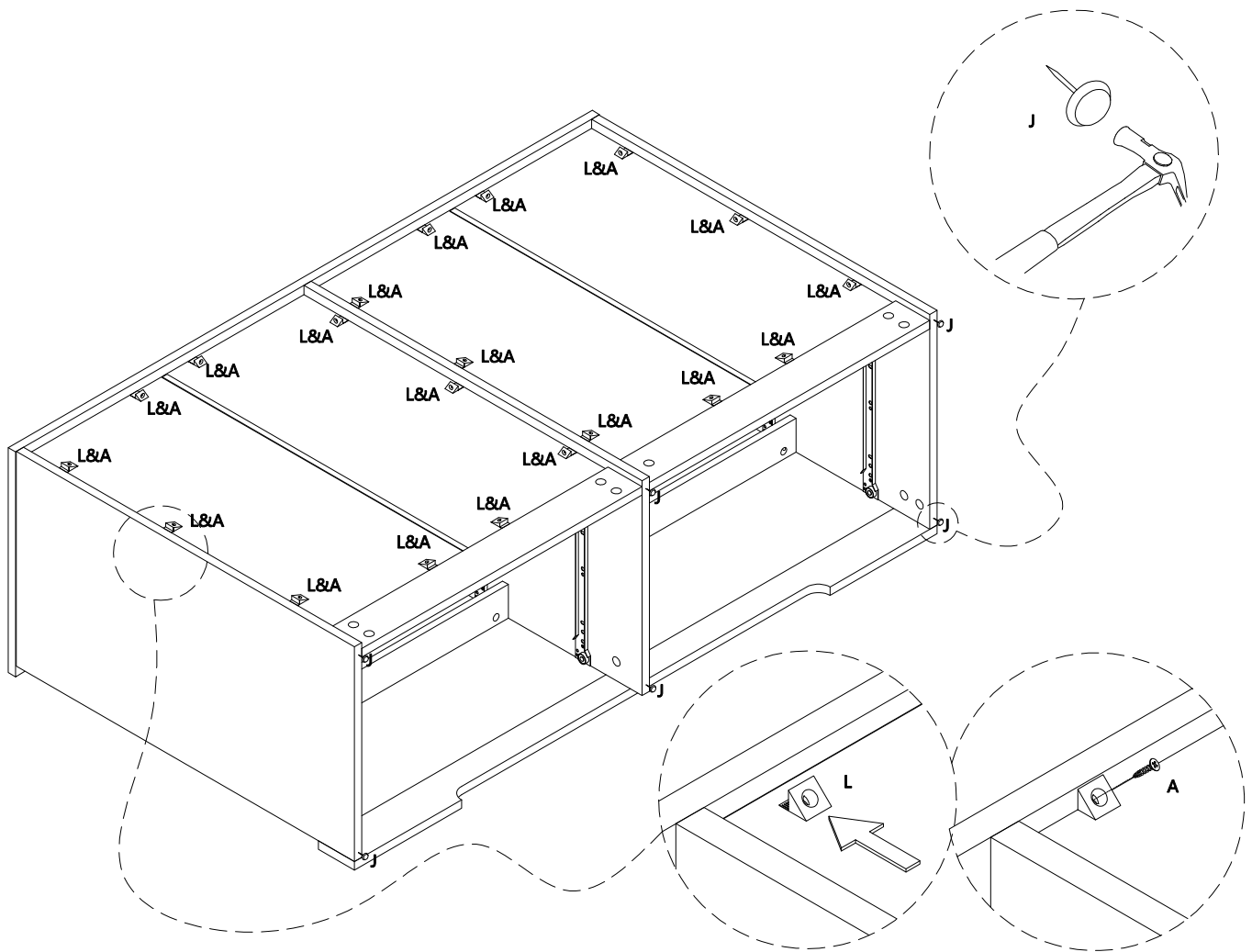


3.5 x 14MM

J x 6



L x 20

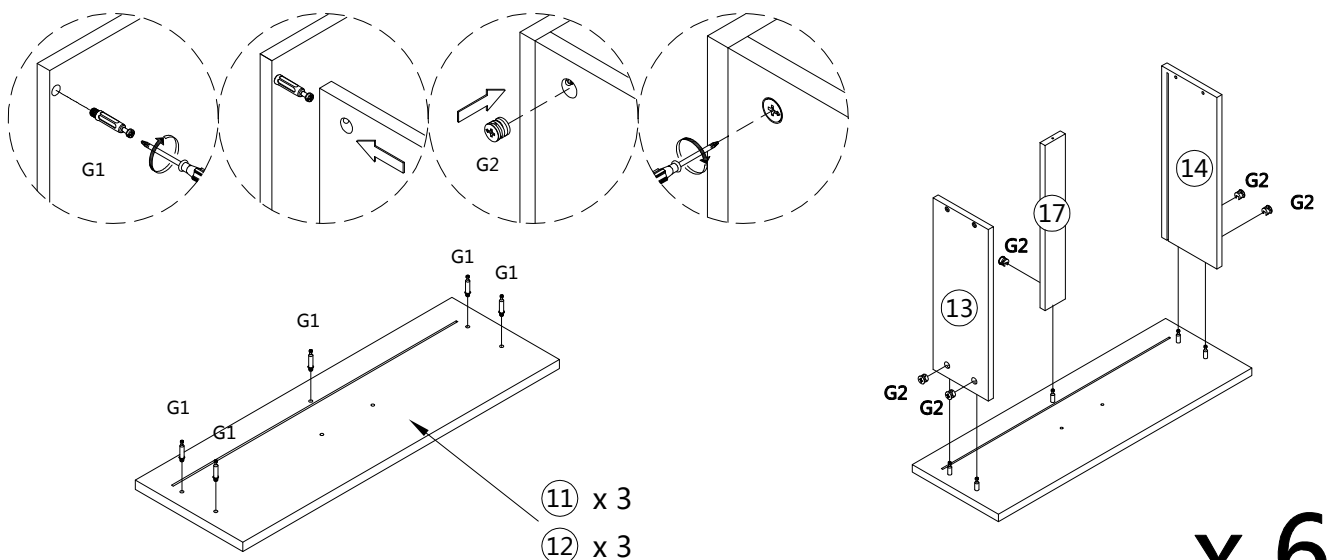


Step 11

G1 x 30



G2 x 30



x 6

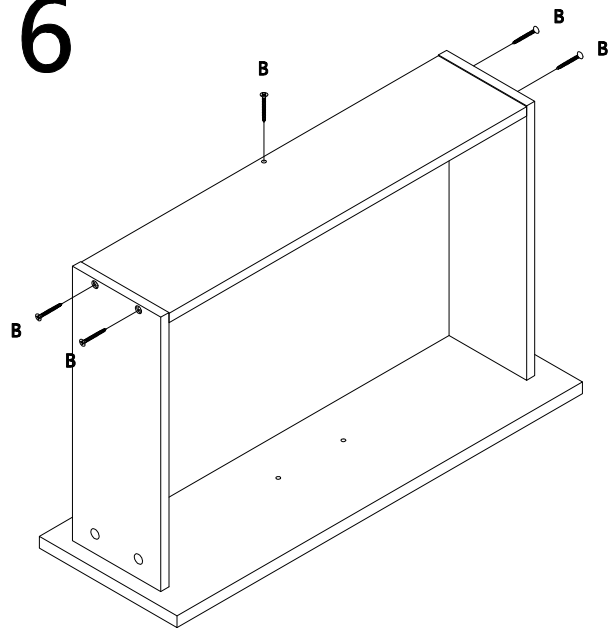
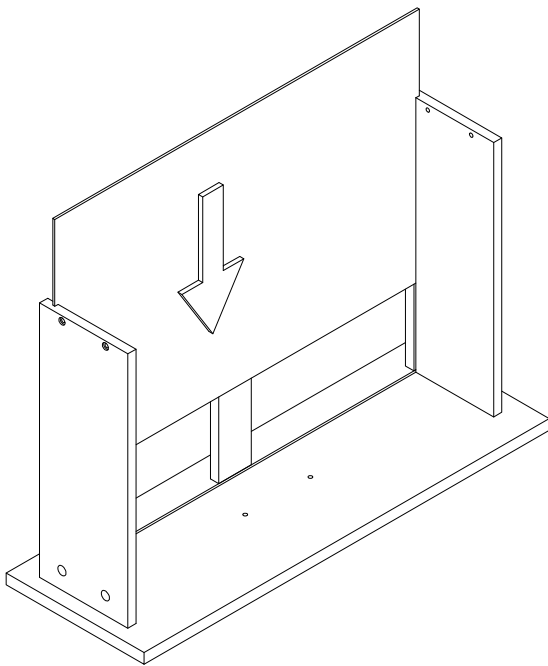
Step 12

B x 30



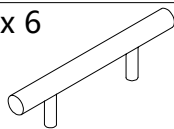
3.5 x 35MM

x 6



Step 13

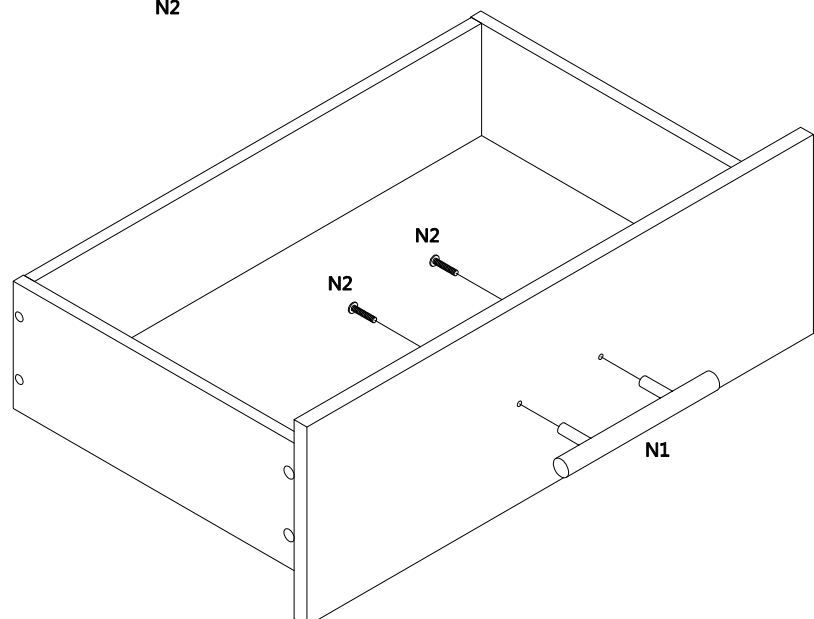
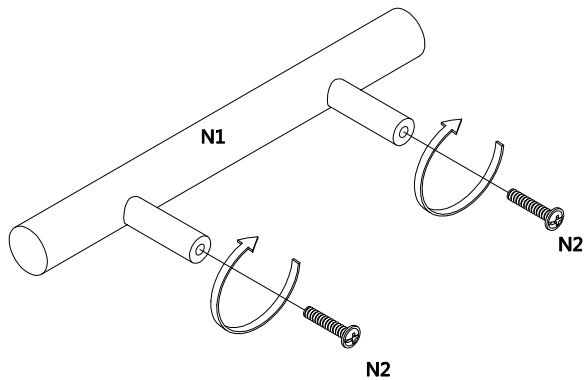
N1 x 6



N2 x 12



x 6



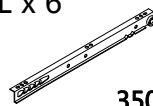
Step 14

A x 24



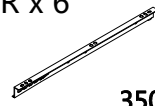
3.5 x 14MM

E2-L x 6



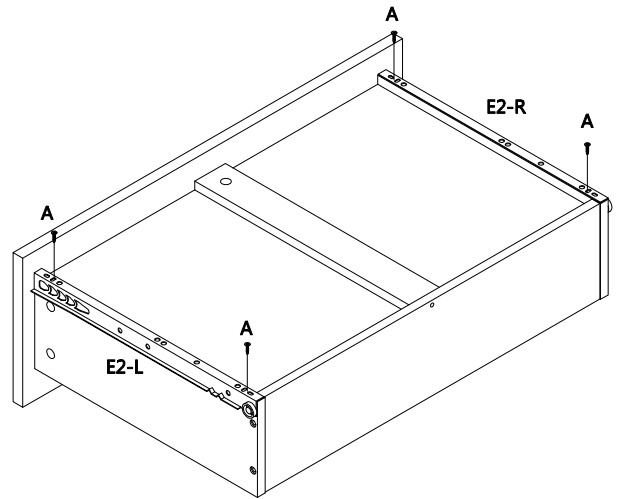
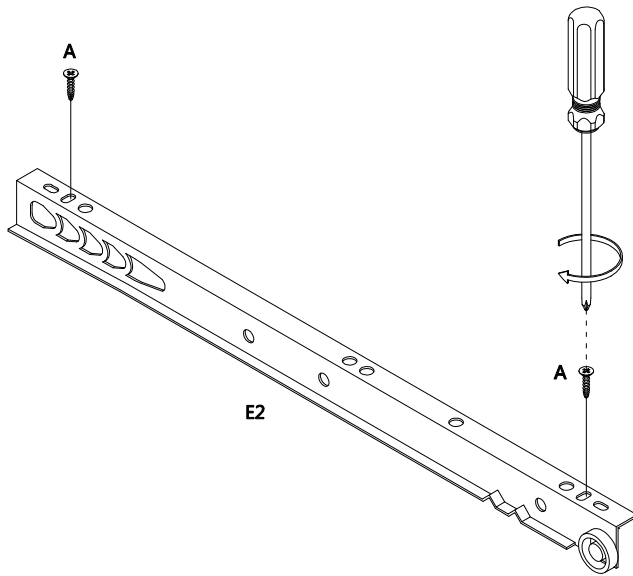
350MM

E2-R x 6

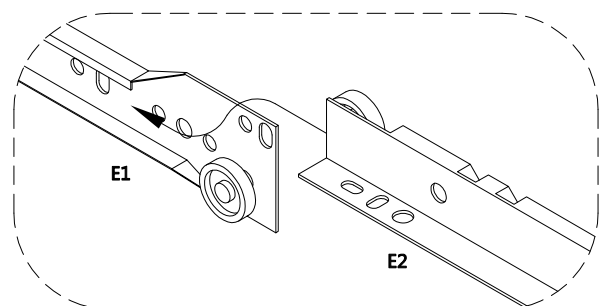
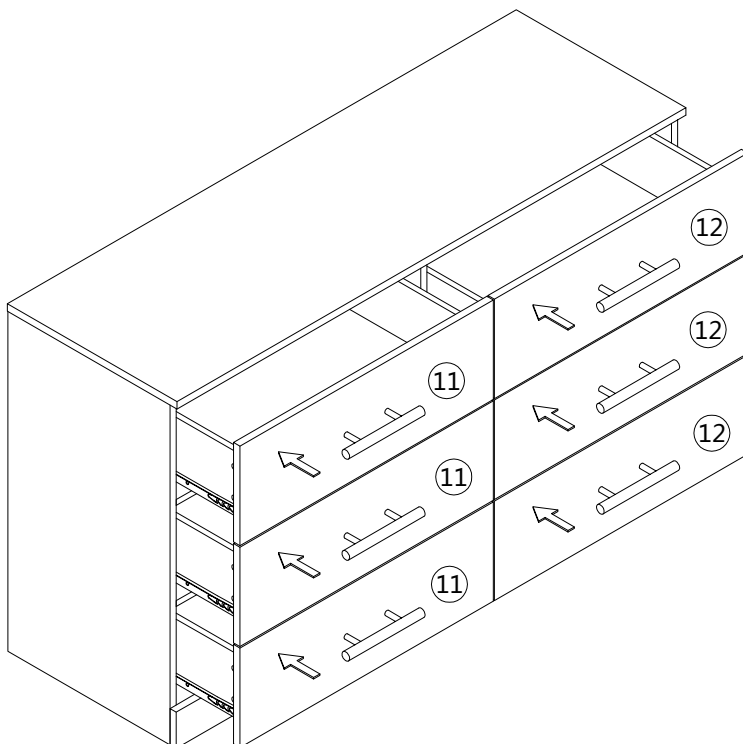


350MM

x 6



Step 15

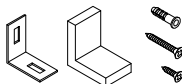


Step 16

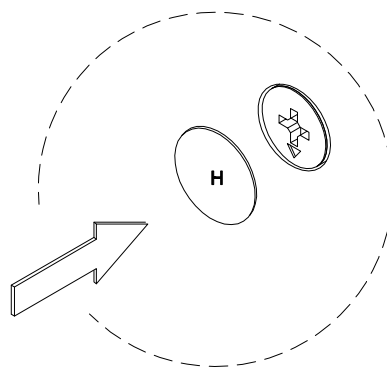
H x 56



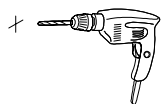
M x 2



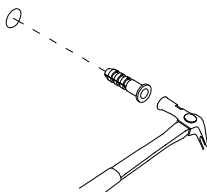
In order to make the product more beautiful, please paste hardware H on the exposed holes



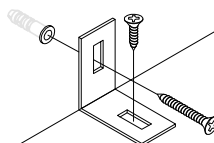
1.



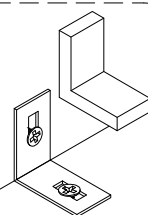
2.



3.



4.



Attentions:

Preventing fallen-down hardware unfixed is in a risk of injury.

WALL

