

# ZIPPITY

*Easy Does It!*

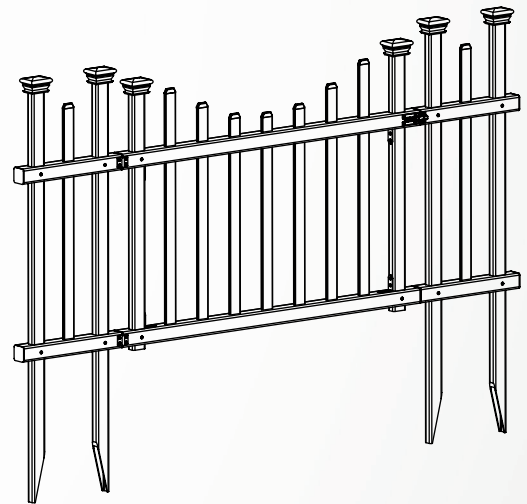
## WASHINGTON VINYL GATE KIT WITH FENCE WINGS (30"H X 60½"W)

## ASSEMBLY INSTRUCTIONS ZP19049

**45 MIN**

*Approximate assembly time*

Want to see a video on how to  
assemble this product?  
**Scan the QR code**



## GENERAL INFORMATION



### IMPORTANT

- Check the inside of the larger pieces in your box for other materials packed inside.
- When assembling components, place on a non-abrasive surface (i.e. shipping box) to avoid scratching.
- We recommend an area approximately 5'x 8' for unobstructed assembling.
- You should not need to use excessive force when assembling components.

## MISSING OR DAMAGED PARTS?

### VISIT OUR WEBSITE FIRST, SO WE CAN HELP YOU RIGHT AWAY!

Although great care has been taken to ensure proper packaging and handling of this product, occasionally problems occur. If you discover any missing, damaged or defective parts, please visit our website to order replacement parts. If you experience any further trouble with your product, please contact our customer service department.

 [parts.nychbrands.com](https://parts.nychbrands.com)

 [support@zippity-outdoor.com](mailto:support@zippity-outdoor.com)

 **704-892-5222 / 877-234-6196**

*Customer service agents are available to take calls weekdays from 9am-5pm EST. If you call outside of business hours, please leave a voicemail.*

To help you quickly and accurately, please have reference item number **ZP19049** and the specific part name which can be found on page 4. It is helpful if you can provide the batch lot which is a stamped number inside the box.

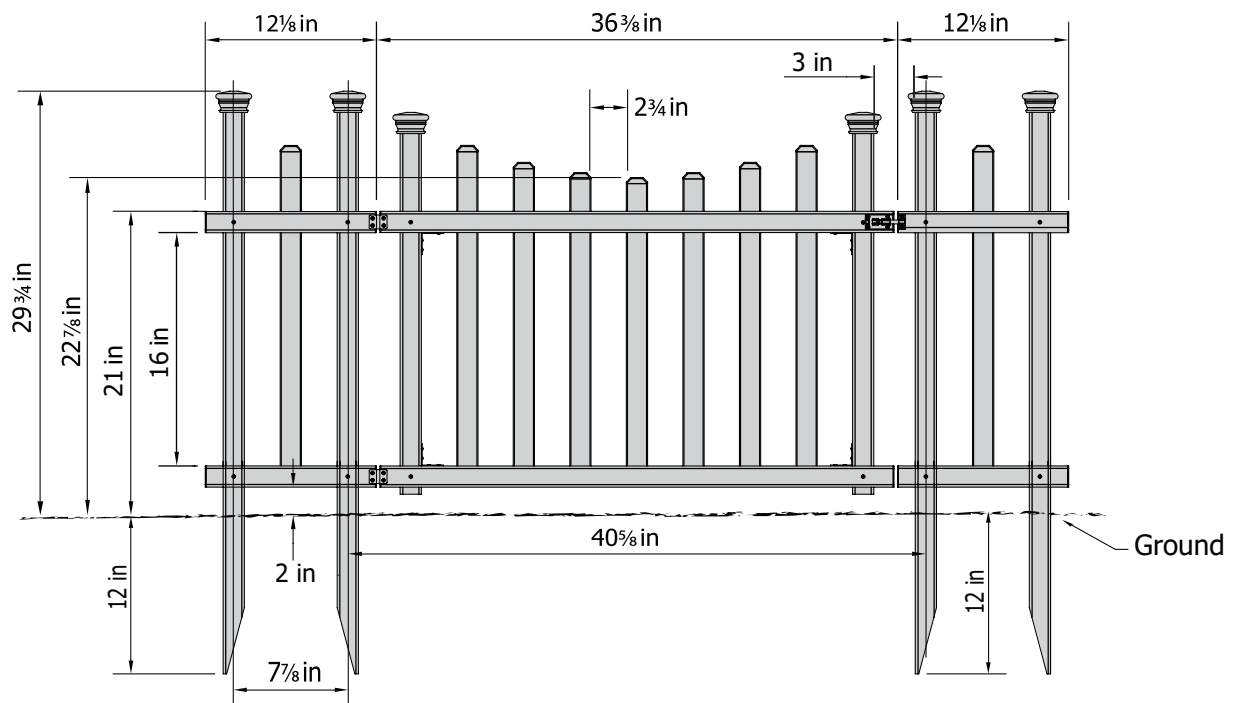
## NEED ASSEMBLY HELP?

If you are having problems with the assembly or installation of this product, we are happy to assist you with the process, **so please give us a call at 704-892-5222 / 877-234-6196.**

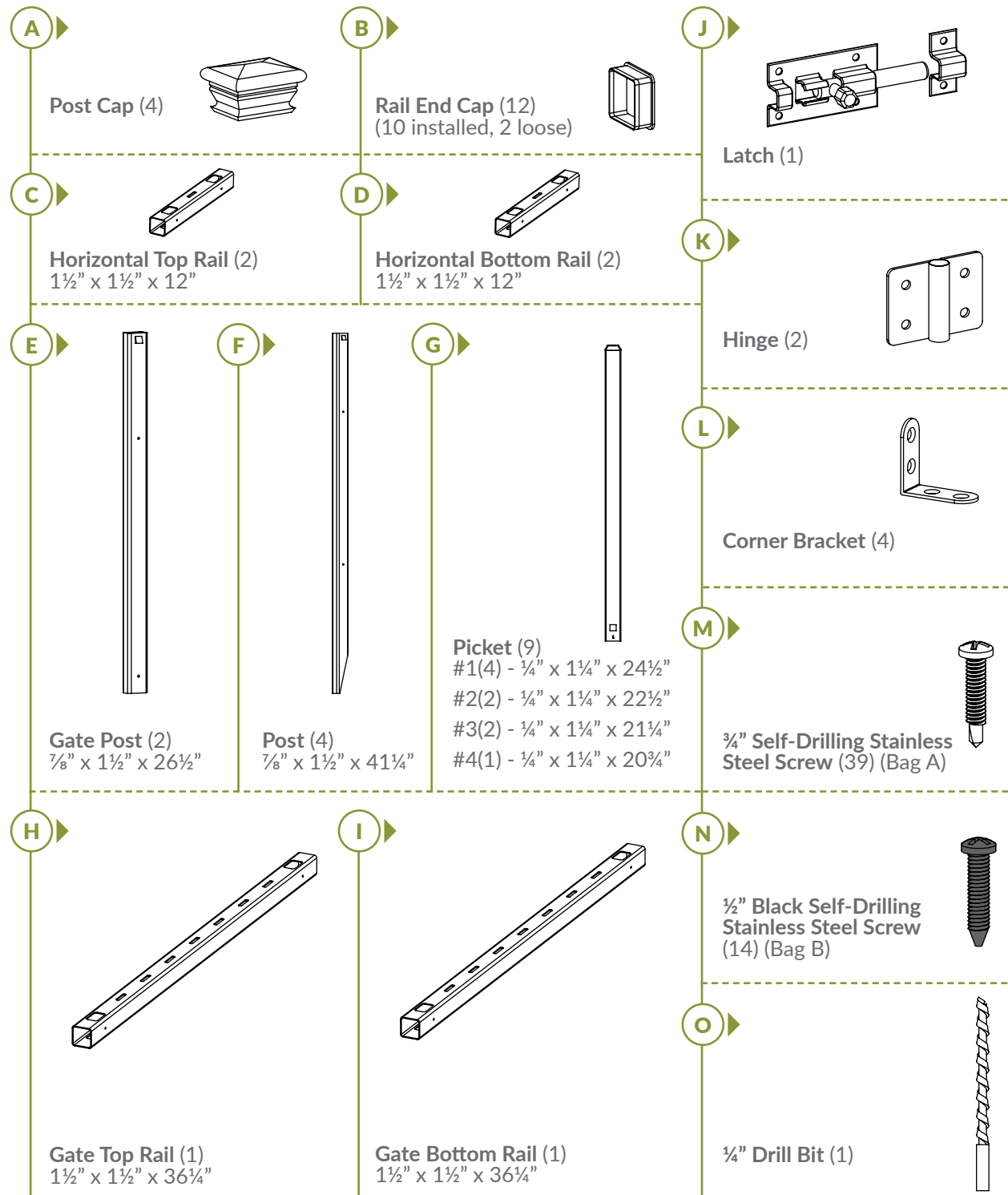
## NEED TO RETURN?

If for some reason you need to return this product, please allow us to help resolve your issues first. If you still decide to return the product, **you will need to initiate the return from the company you originally purchased from.**

## Detailed Product Dimensions & Specifications



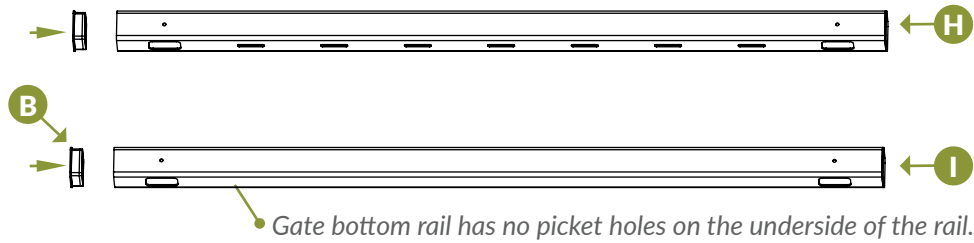
## STEP 1: LAY OUT MATERIALS



## STEP 2: ASSEMBLE THE GATE FRAME

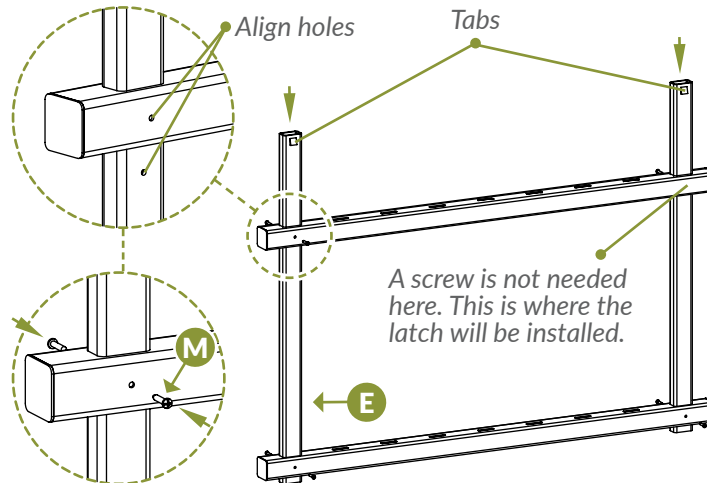
### STEP 2.1 ▶

- Identify the Gate Top Rail (**H**) and Gate Bottom Rail (**I**) as shown below. Pressure fit (2) Rail End Caps (**B**) onto the ends of the gate rails.



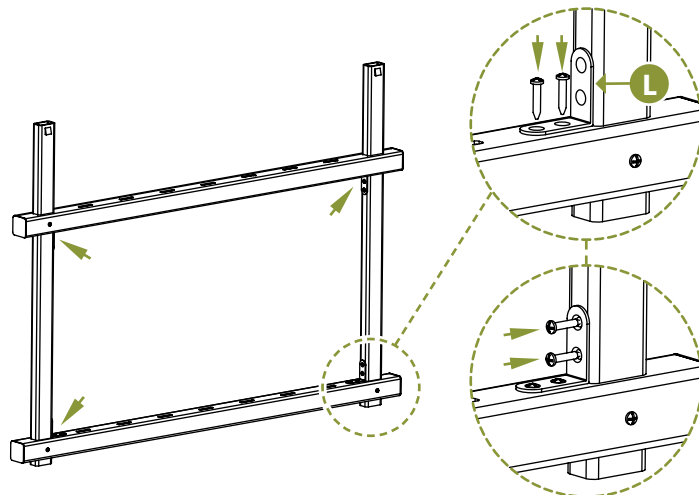
### STEP 2.2 ▶

- Slide (2) Gate Posts (**E**) down into the top and bottom gate rails with the post tabs at the top. Align the pre-drilled holes in the gate posts with the top and bottom rails. Fasten the gate posts to the top and bottom rails with (7)  $\frac{3}{4}$ " Self-Drilling Stainless Steel Screws (**M**).



### STEP 2.3 ▶

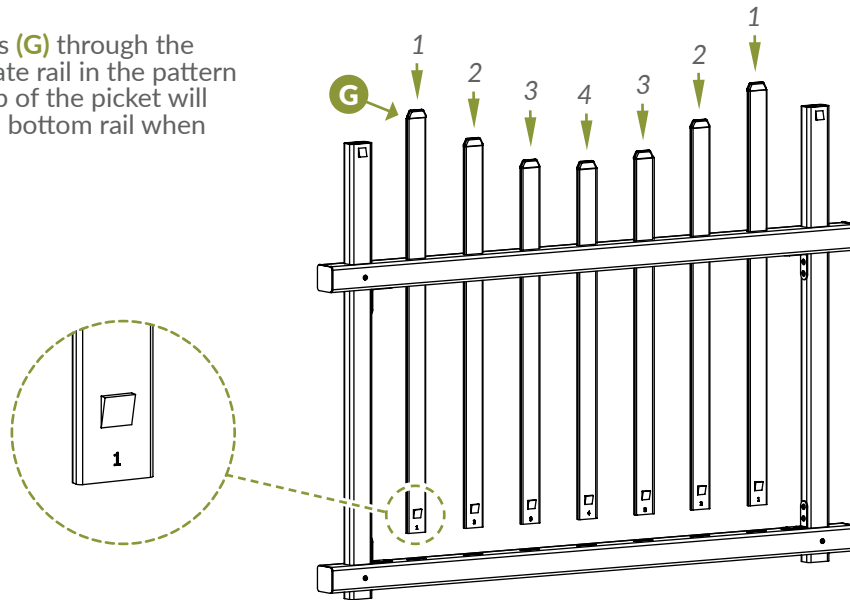
- Starting with one inside corner, place a Corner Bracket (**L**) against a gate rail and gate post as shown below. Fasten (2)  $\frac{3}{4}$ " self-drilling stainless steel screws into the gate rail. Next, fasten (2)  $\frac{3}{4}$ " self-drilling stainless steel screws into the gate post. Repeat this process for the other three internal corners.



## STEP 3: INSTALL PICKETS AND POST CAPS

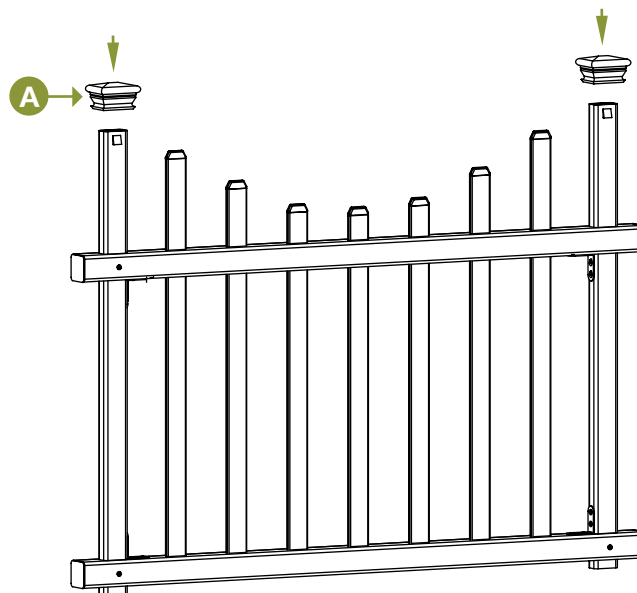
### STEP 3.1 ▶

▶ Insert the Pickets (G) through the top and bottom gate rail in the pattern illustrated. The tab of the picket will snap into the gate bottom rail when fully inserted.



### STEP 3.2 ▶

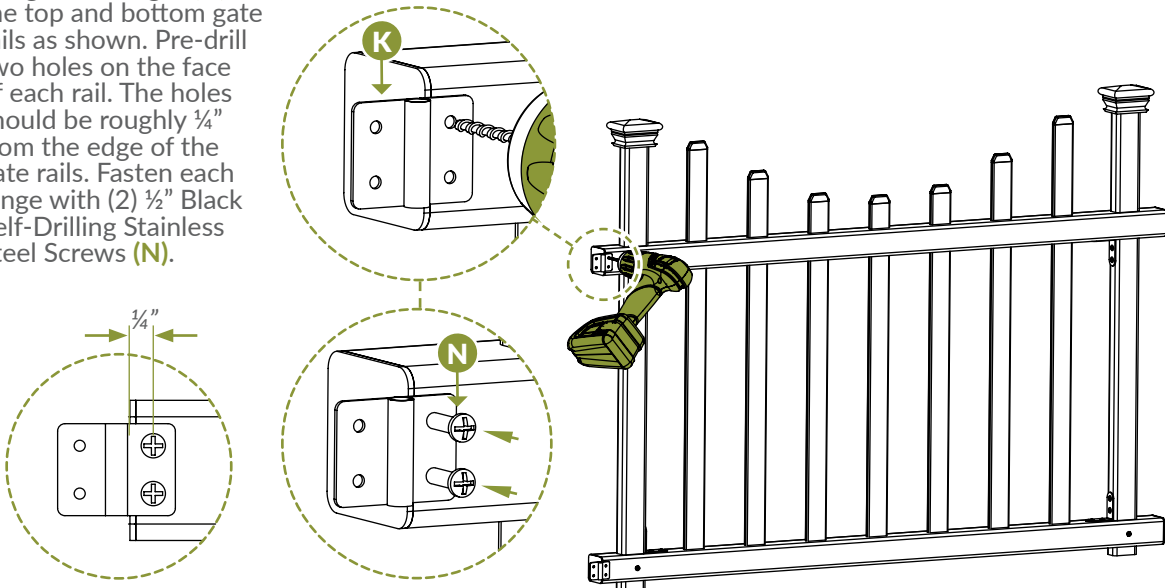
▶ Pressure fit (2) Post Caps (A) down over the gate posts. The post caps will lock into place when fully inserted.



## STEP 4: INSTALL HINGE AND LATCH

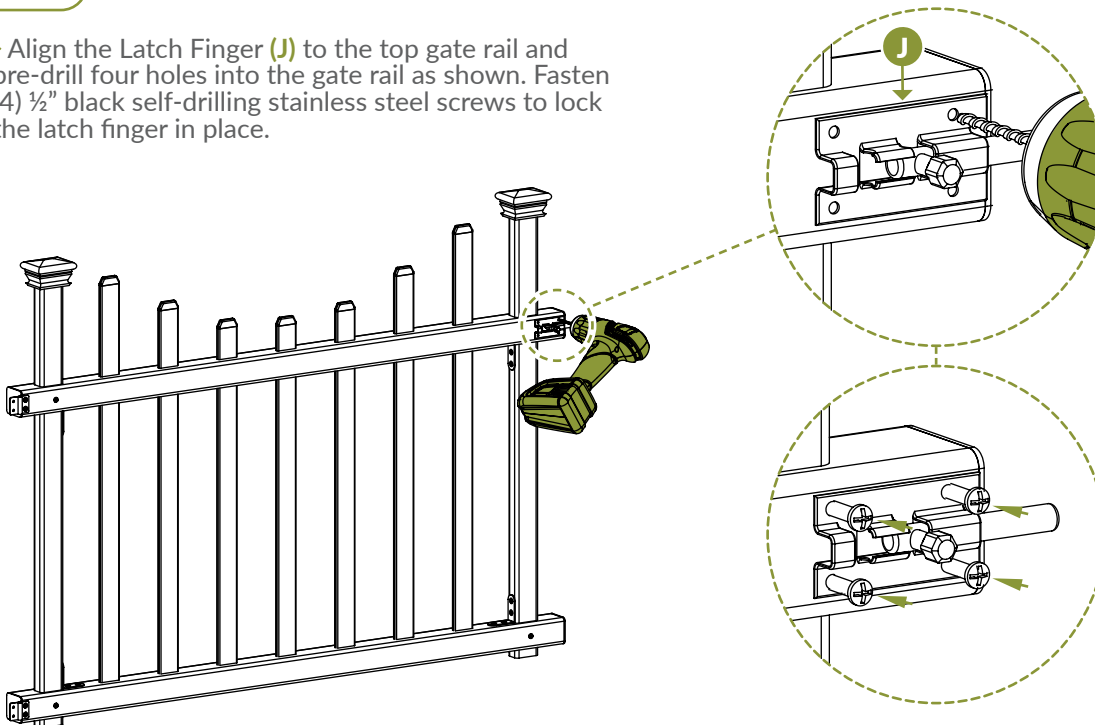
### STEP 4.1

► Align the Hinges (**K**) on the top and bottom gate rails as shown. Pre-drill two holes on the face of each rail. The holes should be roughly  $\frac{1}{4}$ " from the edge of the gate rails. Fasten each hinge with (2)  $\frac{1}{2}$ " Black Self-Drilling Stainless Steel Screws (**N**).



### STEP 4.2

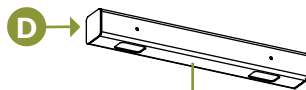
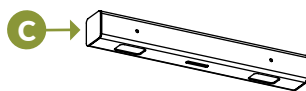
► Align the Latch Finger (**J**) to the top gate rail and pre-drill four holes into the gate rail as shown. Fasten (4)  $\frac{1}{2}$ " black self-drilling stainless steel screws to lock the latch finger in place.



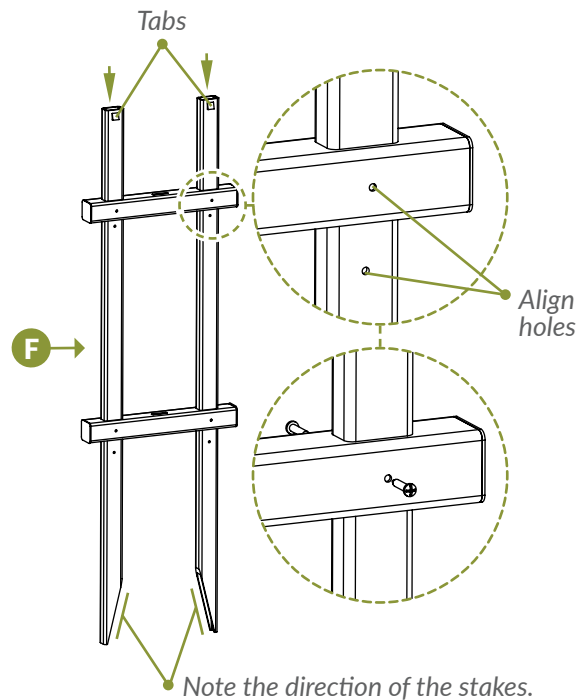
## STEP 5: ASSEMBLE THE GATE WINGS

### STEP 5.1 ▶

► Identify the Horizontal Top Rail (C) and Horizontal Bottom Rail (D). Orient the Posts (F) as shown. Slide (2) posts down into the horizontal top and bottom rails. Align the pre-drilled holes on the posts and the rails and fasten with (8)  $\frac{3}{4}$ " self-drilling stainless steel screws into the holes.

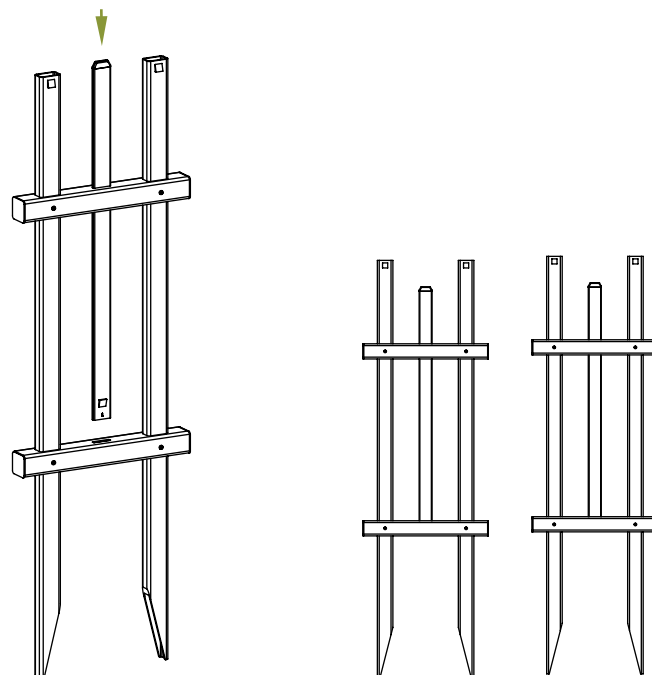


*Horizontal bottom rail has no picket hole on the underside of the rail.*



### STEP 5.2 ▶

► Insert a picket (numbered 1) down through the horizontal top rail and into the horizontal bottom rail. Repeat to assemble the second gate wing.

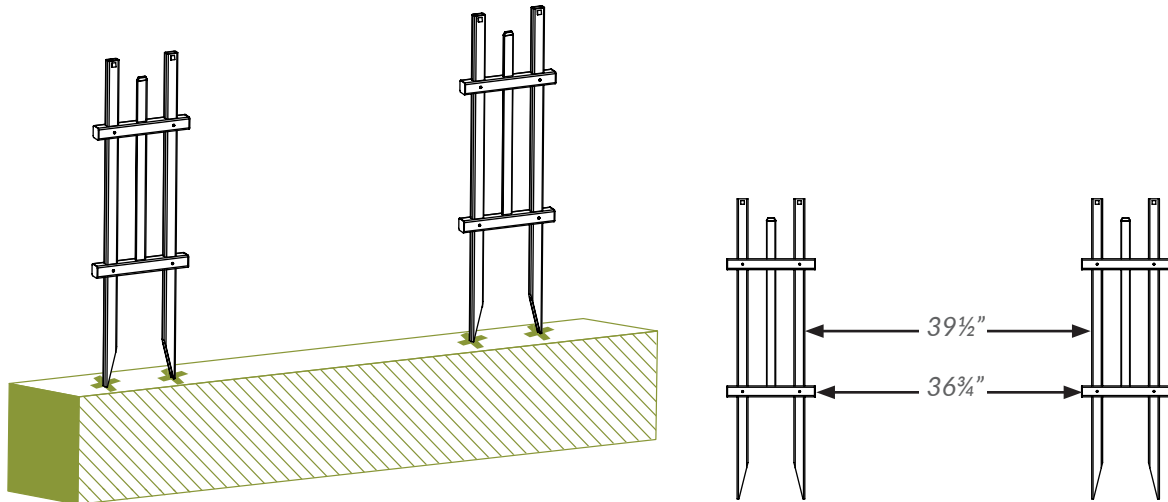




## STEP 6: INSTALL GATE WINGS INTO THE GROUND

### STEP 6.1 ▶

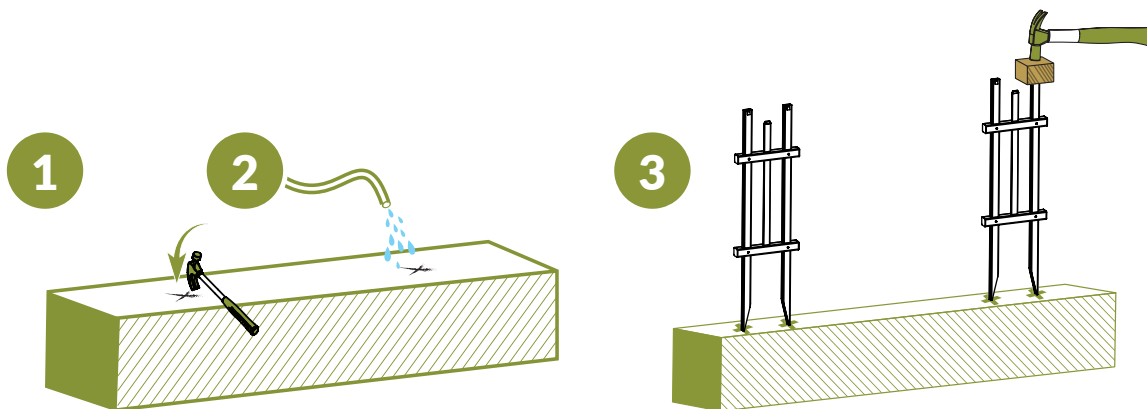
▶ Move the gate wings to their final location and identify the location of the posts. The distance between the posts should be  $39\frac{1}{2}"$  or  $36\frac{3}{4}"$  between the ends of the horizontal rails as shown below.



### STEP 6.2 ▶

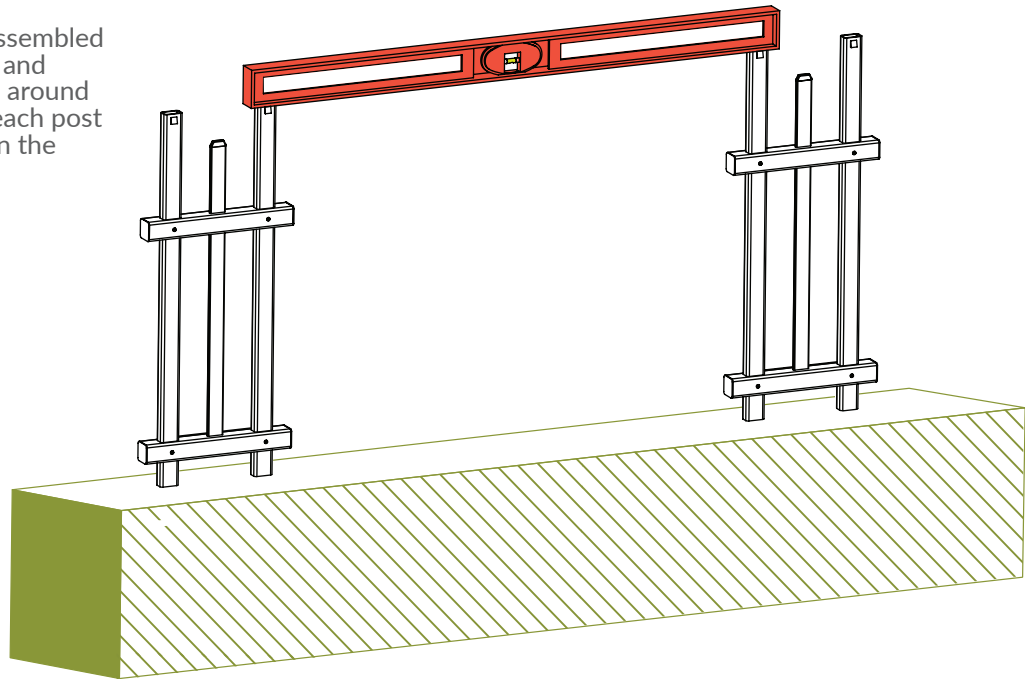
▶ Attempt to push the posts into the ground at the marked locations. If your ground is too hard, follow these steps illustrated below:

1. Loosen the top 6" to 8" of the ground using a claw hammer or similar tool.
2. Add water to soften the soil.
3. Use a block of wood to protect the top of the post and gently hammer each post into the ground until the bottom horizontal rails are roughly 2" above the ground.

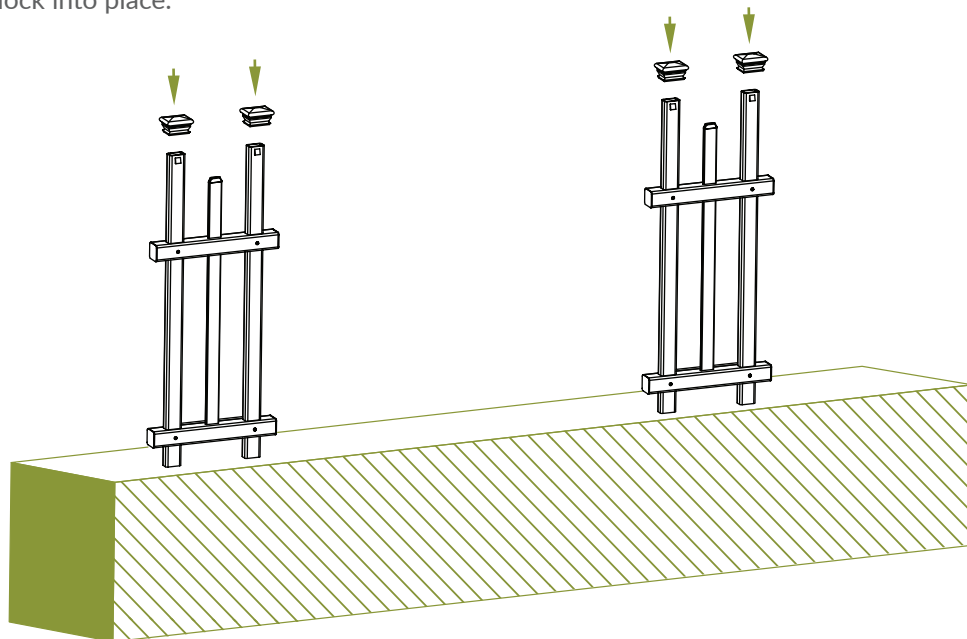


**STEP 6.3** ▶

▶ Level the assembled unit. Backfill and compact dirt around the base of each post to strengthen the unit.

**STEP 6.4** ▶

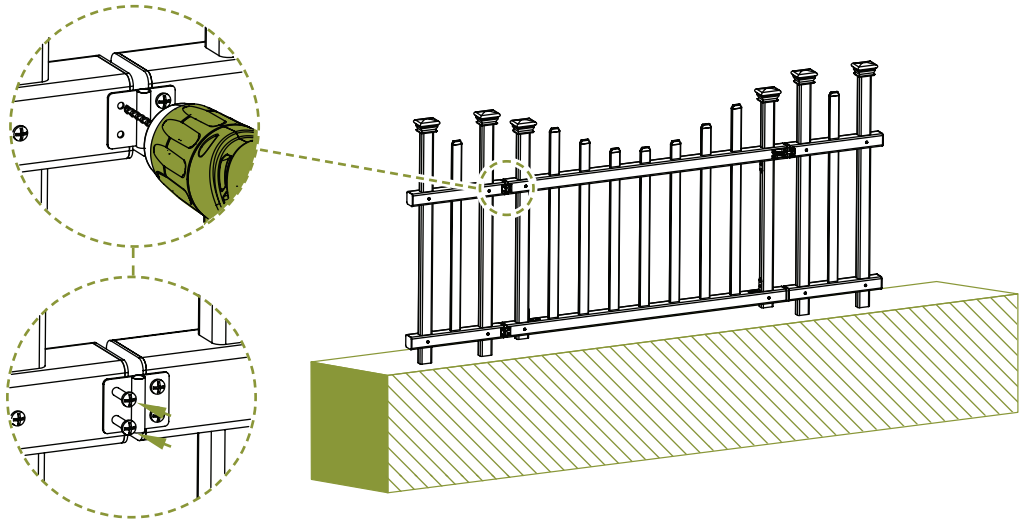
▶ Finish the assembly by pushing the post caps down over the top of the posts as illustrated. The post caps will lock into place.



## STEP 7: ATTACH GATE TO WINGS

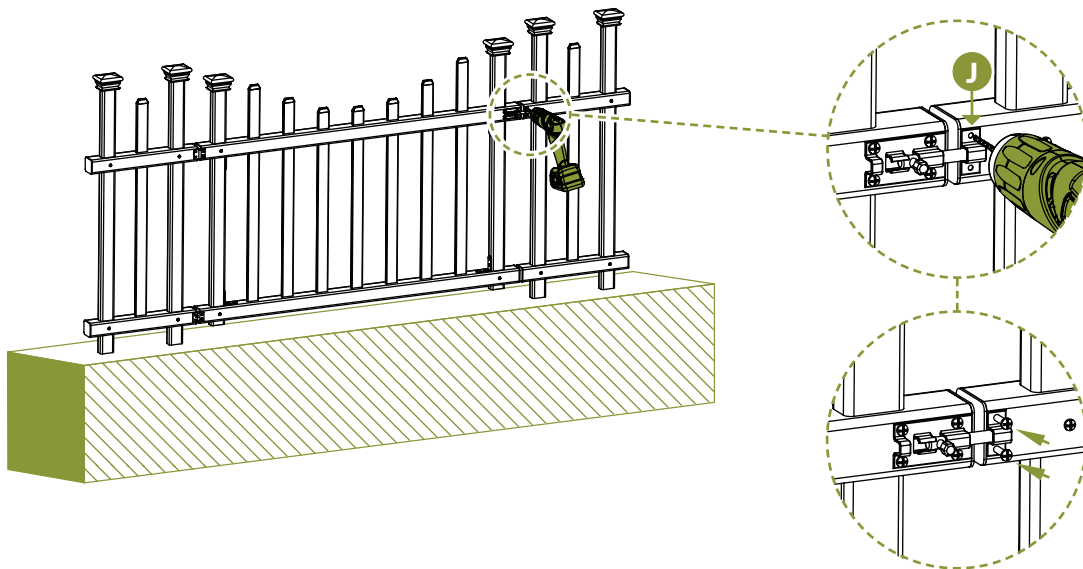
### STEP 7.1

► Align the hinges against the horizontal rails of the gate wing as shown. Mark and pre-drill two holes for each hinge. Fasten each hinge with (2) ½" black self-drilling stainless steel screws.



### STEP 7.2

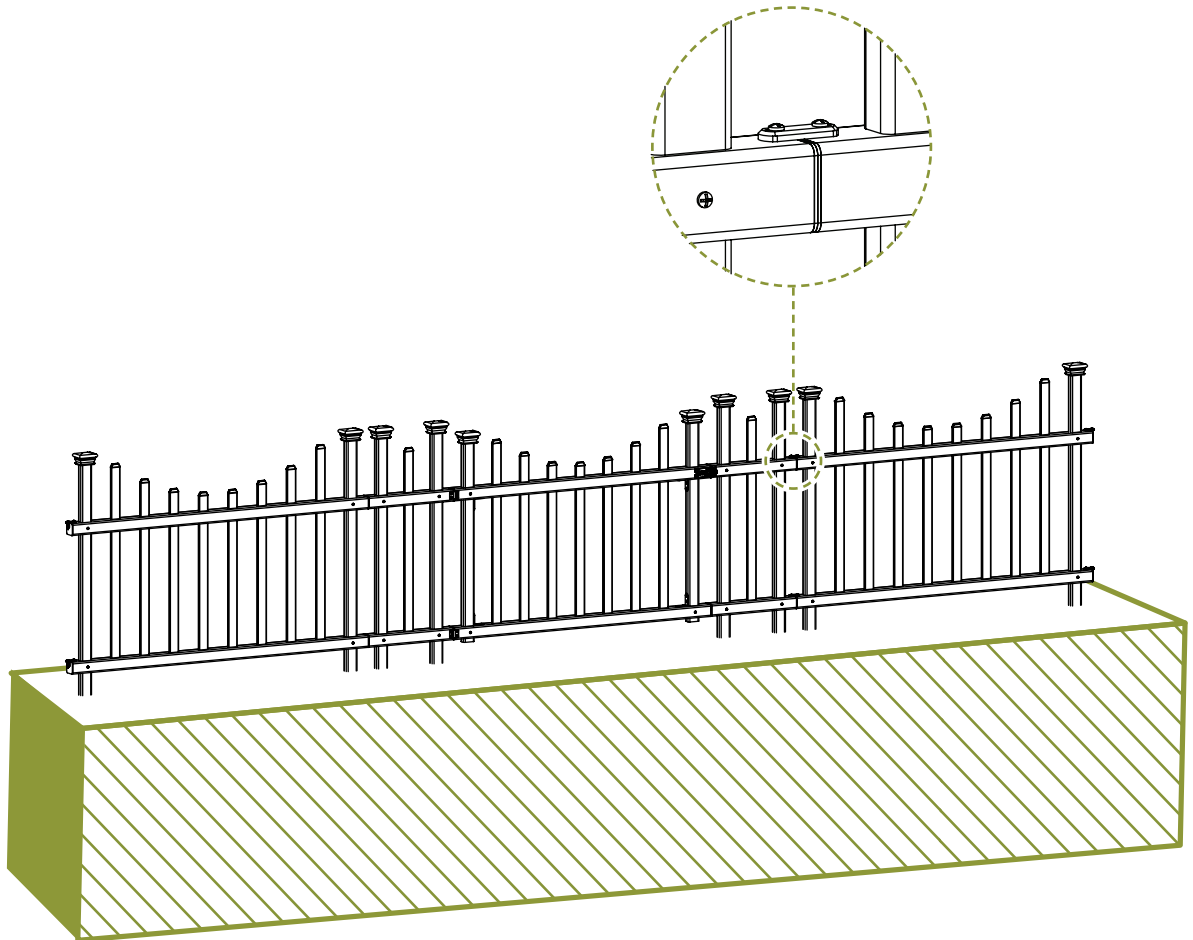
► Align the Latch Catch (J) with the latch finger and pre-drill two holes into the horizontal top rail of the gate wing. Fasten with (2) ½" black self-drilling stainless steel screws.



## STEP 8: CONNECT GATE TO FENCE PANELS

### STEP 8.1 ▶

▶ Follow the instructions included in your Washington Picket Fence Kit (**ZP19048**). Connect the horizontal top and bottom rails of the gate and fence panels using the supplied joiner clips in the Washington Picket Fence Kit.







# ZIPPITY

*Easy Does It!*



6935 Reames Rd. Ste. K.  
Charlotte, NC 28216



[support@zippity-outdoor.com](mailto:support@zippity-outdoor.com)

704-892-5222  
877-234-6196



[WWW.ZIPPITY-OUTDOOR.COM](http://WWW.ZIPPITY-OUTDOOR.COM)