



Instruction Manual

Rain Shower System

CONTENT

1:Installation Condition	1page
2:Product photo	2page
3:Product List	3~6page
4:Model A&B outlets installation	7page
5:Model C&D outlets installation	8page
6:Model A&C&D Main body valve installation	9page
7:Model A &C&D 2 way function main body connecting pipe schematic diagram	10page
8:Model A &C&D Main body assembly schematic diagram	11page
9:Model B 1 way function main body connecting pipe schematic diagram	12~14page
10:Model C&D Install the tub spout	15page
11:Installation of rain shower arm	15page
12:Model A &C&D shower holder installation	15page
13:Care and maintenance	16page

♦ INSTALLATION CONDITION



1.Refer to the 《Standard Part List》 when unpacking ,
check all parts available .

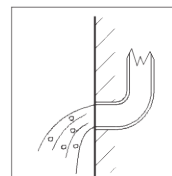
2.Do not disassemble mixer body by yourself.

3.Connect inlet hoses to supply valves.

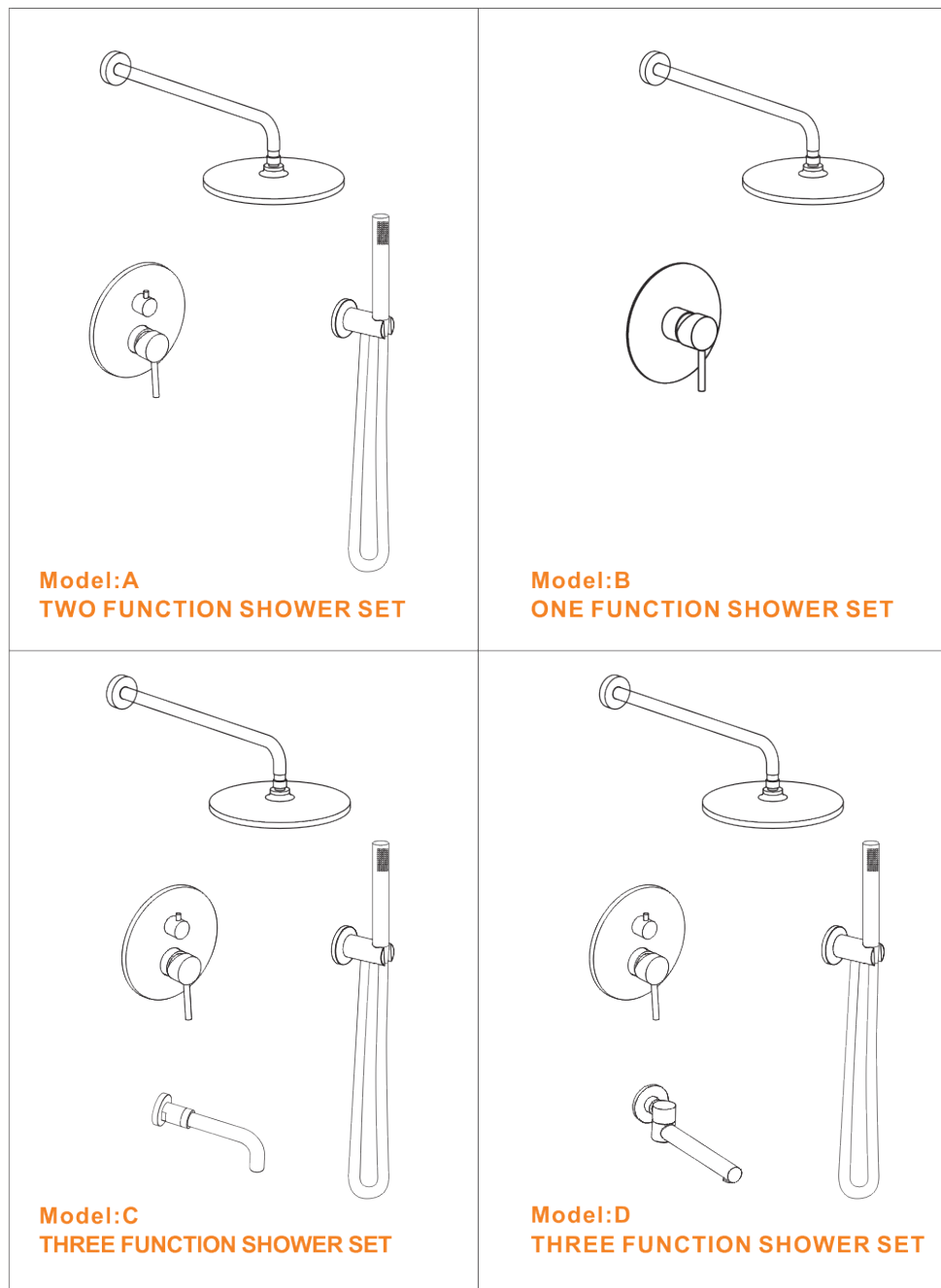
4.Make sure inlet pipes and supply valves have been
installed and cleaned, also ensure no impurities in
pipeline.

5.After installation , check all joints for leakages.

6.Suggest don't fit the faucet in the severely corrosive environments.

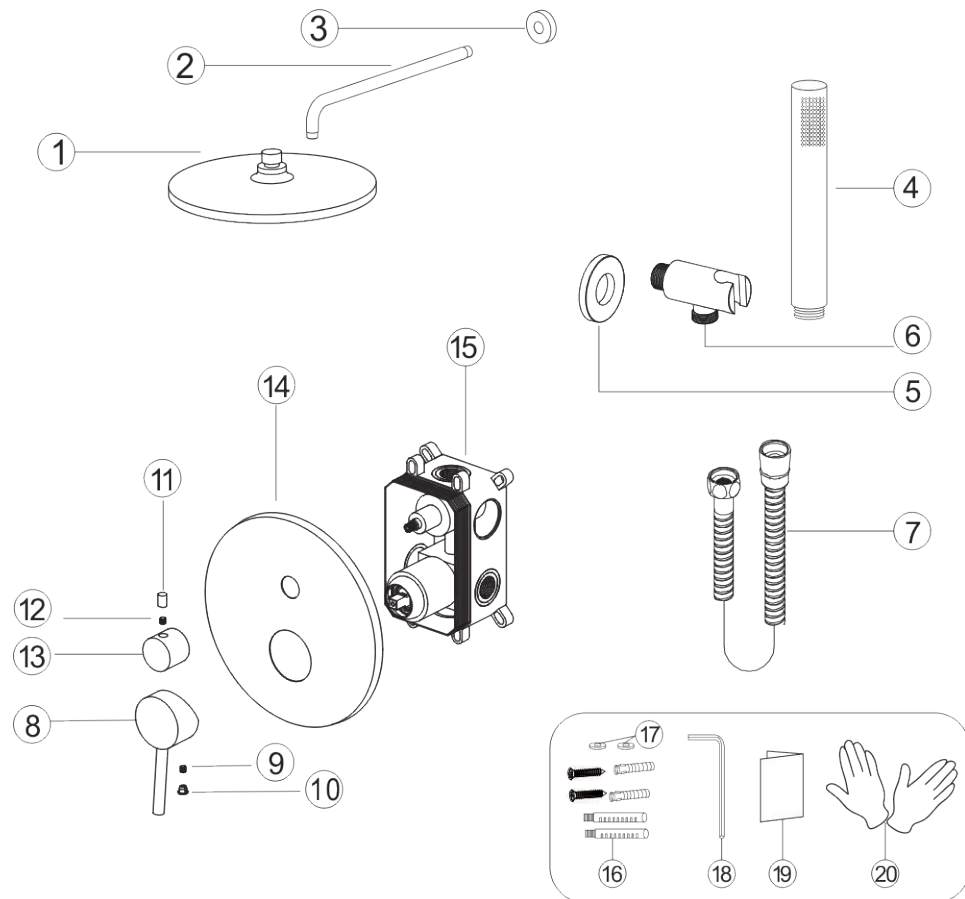


◆ PRODUCT PHOTO



◆ PRODUCT LIST

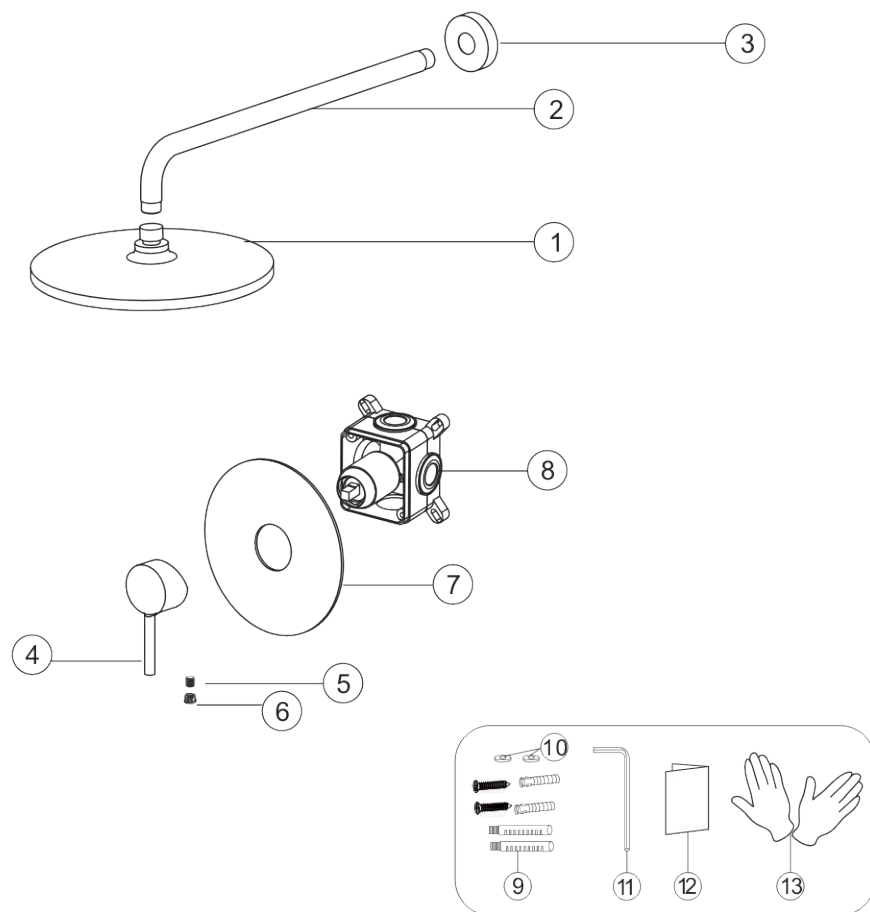
Model:A



No.	Part name	Qty	No.	Part name	Qty
1	Shower head	1	11	Water divider cup	1
2	Shower arm	1	12	Water divider screw	1
3	Shower arm cup	1	13	Water divider	1
4	Shower hand	1	14	Panel	1
5	Holder cup	1	15	Main body	1
6	Hand shower holder	1	16	Body box screw	4
7	Shower hose	1	17	Valve gasket spare parts	4
8	Handle	1	18	Wrench	1
9	Handle screw	1	19	Instruction manual	1
10	Handle cup	1	20	Gloves	2

◆ PRODUCT LIST

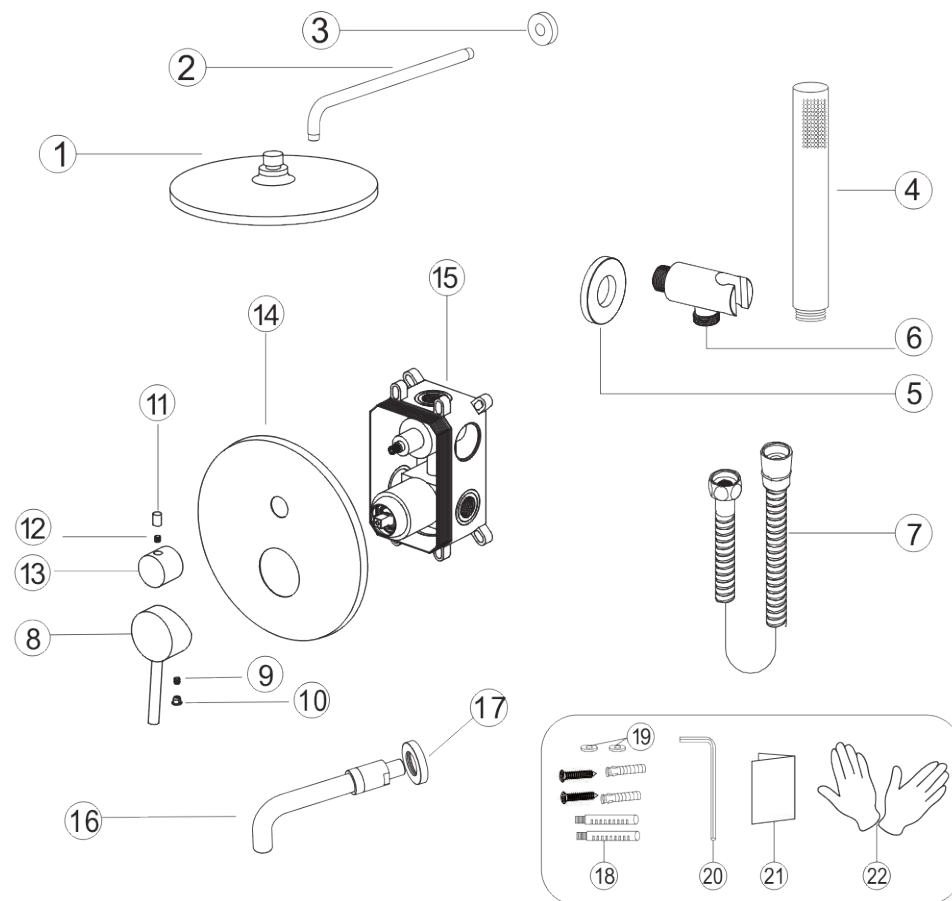
Model:B



No.	Part name	Qty	No.	Part name	Qty
1	Shower head	1	8	Mainbody	1
2	Shower arm	1	9	Body box screw	4
3	Shower arm cup	1	10	Valve gasket spare parts	2
4	Handle	1	11	Wrench	1
5	Handle screw	1	12	Instruction manual	1
6	Handle cup	1	13	Gloves	2
7	Panel	1			

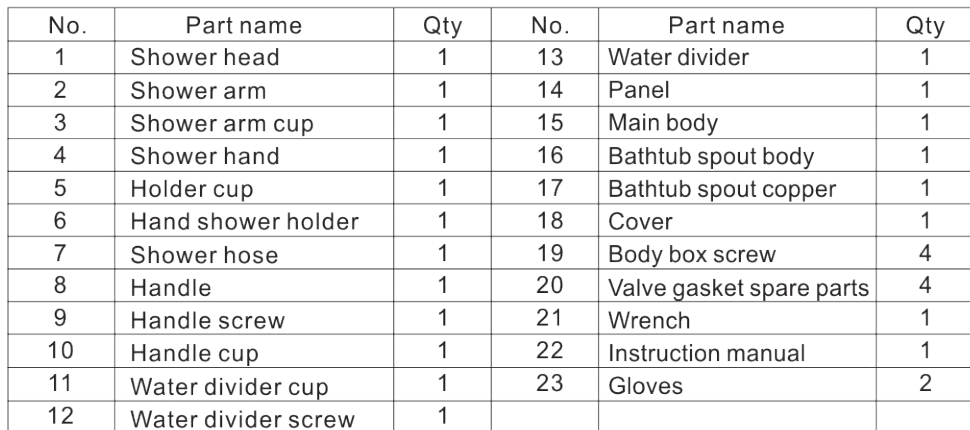
◆ PRODUCT LIST

Model:C

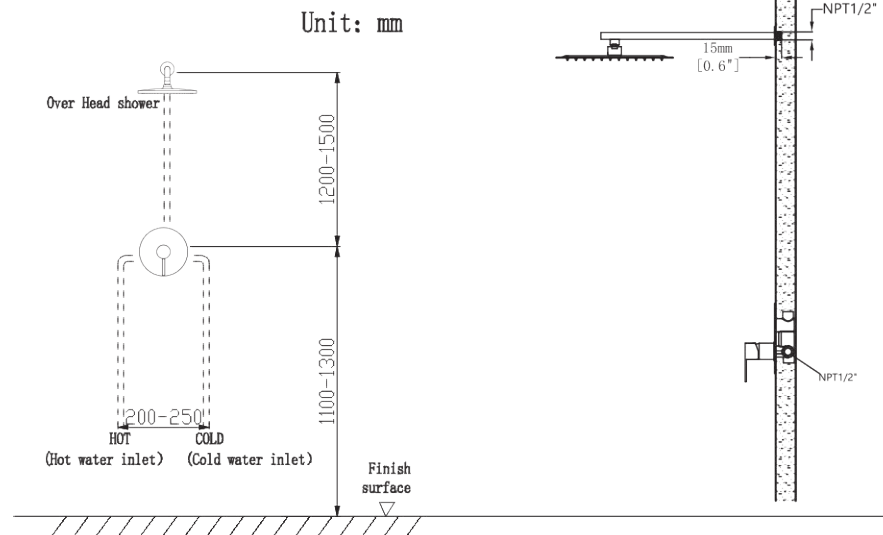


No.	Part name	Qty	No.	Part name	Qty
1	Shower head	1	12	Water divider screw	1
2	Shower arm	1	13	Water divider	1
3	Shower arm cup	1	14	Panel	1
4	Shower hand	1	15	Main body	1
5	Holder cup	1	16	Bathtub spout body	1
6	Hand shower holder	1	17	Cover	1
7	Shower hose	1	18	Body box screw	4
8	Handle	1	19	Valve gasket spare parts	4
9	Handle screw	1	20	Wrench	1
10	Handle cup	1	21	Instruction manual	1
11	Water divider cup	1	22	Gloves	2

Model:D

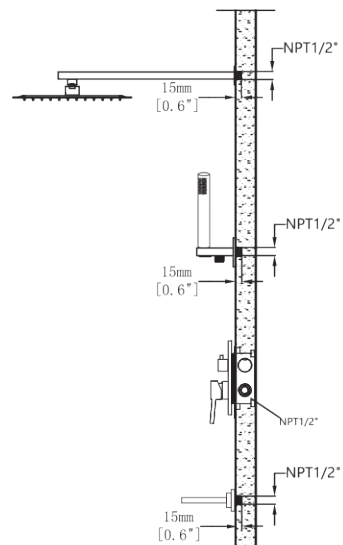
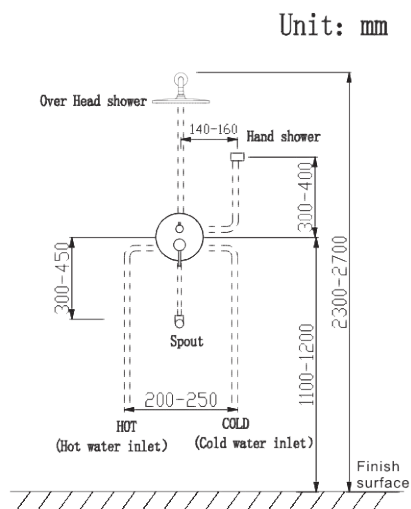


◆ Model B ONE FUNCTION OUTLETS INSTALLATION

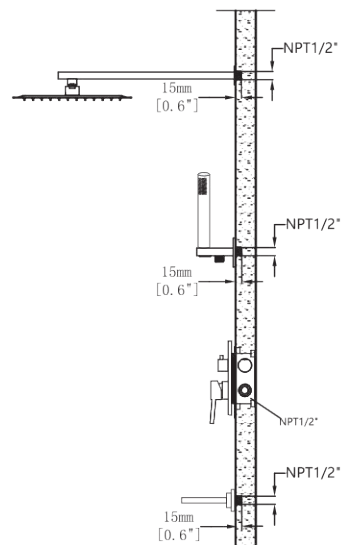
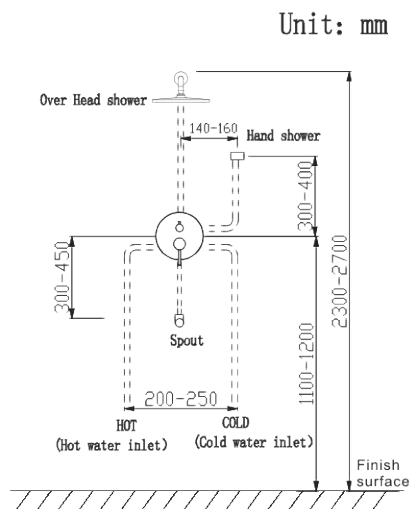


— 7 —

◆ **Model C THREE FUNCTION SHOWER SET
OUTLETS INSTALLATION**

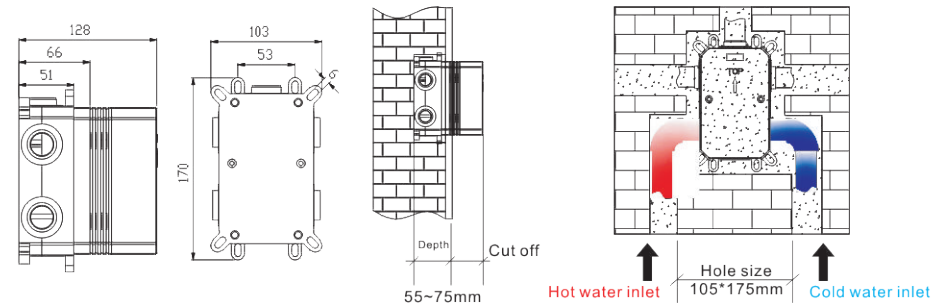


◆ **Model D THREE FUNCTION SHOWER SET
OUTLETS INSTALLATION**



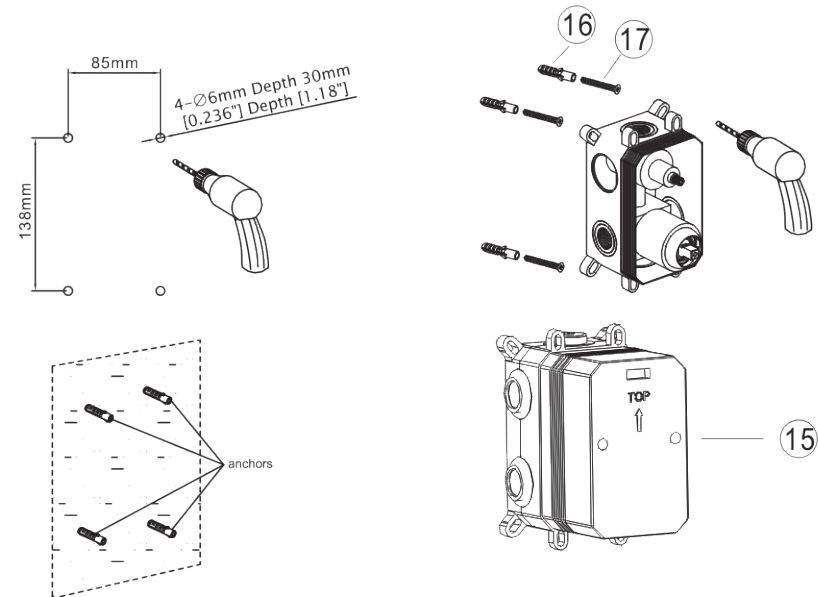
The installation dimensions are for reference only, and can be installed according to actual usage requirements.
The installation depth of ceiling rod is about 15mm, The installation depth of shower seat is about 15mm. The main body installation depth is on the following detail description

◆ **Model A & C & D
MAIN BODY VALVE INSTALLATION**



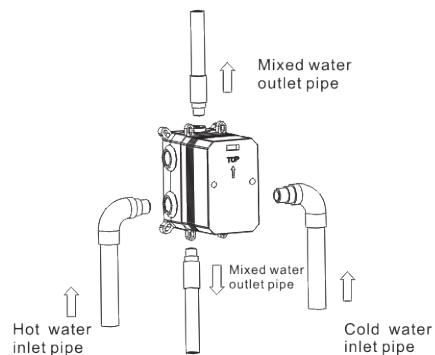
According to the basic size of the concealed box, use a special tool to open the main hole in the solid wall. As shown in the figure, the distance between the surface of the wall after the final treatment and the bottom surface of the opening should be considered to be 55~75mm.

According to the size of installation to install the anchors to the wall, then use ⑩⑪ Valve gasket spare parts then install the ⑮ Main body



Please note that the level meter should be parallel, otherwise the panel cannot be installed. Pay attention to the length and width of the screw position before marking

♦ **Model A & C & D**
TWO-FUNCTION MAIN CONNECTING PIPE SCHEMATIC DIAGRAM

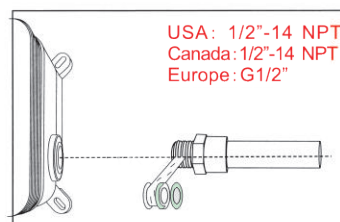
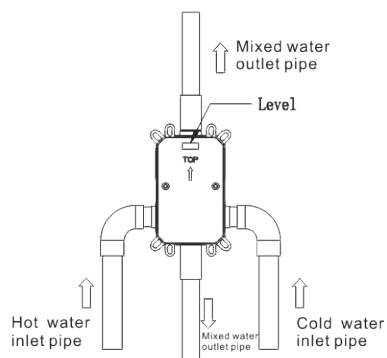


As shown in the figure, the inlet and outlet pipes are pre-buried, pay attention to the correct direction of installing the pre-buried box, and make sure that the mark TOP on the top of the installation box is facing upward.

♦ **Model A & C & D**
2 WAY FUNCTION MAIN BODY CONNECTING PIPE SCHEMATIC DIAGRAM

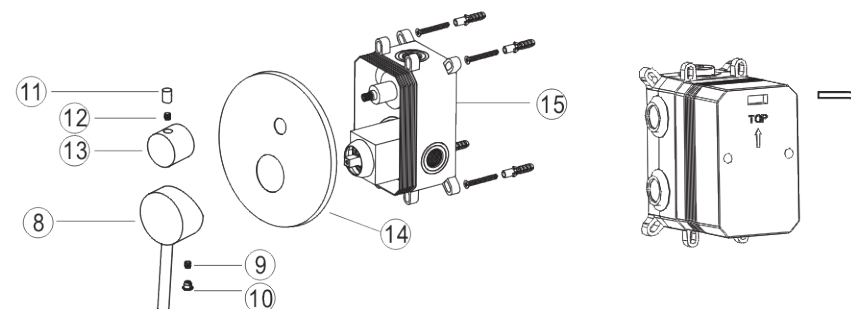


Warning: must install hot water and cold water inlet strictly as instructions.



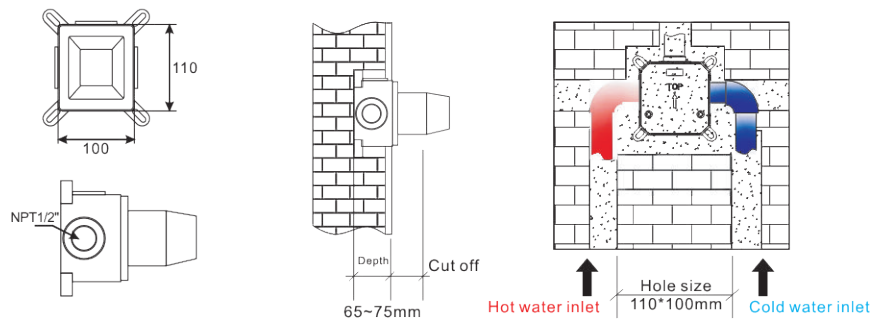
Install the hot and cold water inlet pipes, Shower head and hand shower holder pipes. Turn on the water source to test whether the left and right inlet pipes are tightly connected without leakage. After the test, adjust the flow switch to be on to test whether the mixed outlet pipe. The connection is tight and there is no leakage.

♦ **Model A & C & D**
MAIN BODY ASSEMBLY SCHEMATIC DIAGRAM



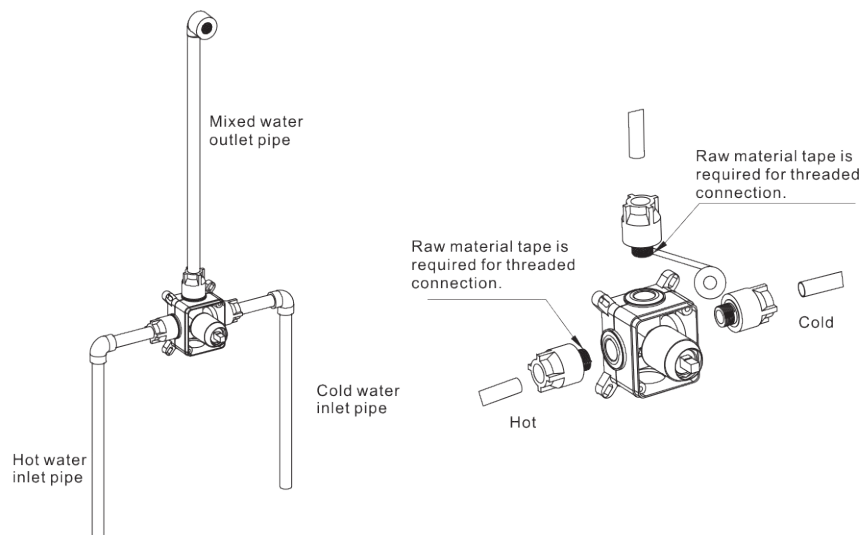
Please fix the ⑮ Main body to the wall then remove the plastic protective cover and install ⑭ Panel ⑬ Water divider, ⑫ Screw, ⑪ Water divider cup in the order. Finally you could install ⑧ Handle, ⑨ Screw, ⑩ Handle cup.

◆ **Model B**
1 WAY FUNCTION MAIN BODY CONNECTING PIPE SCHEMATIC DIAGRAM



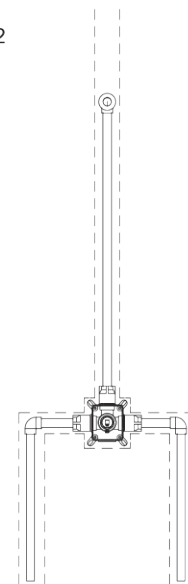
According to the basic size of the concealed box, use a special tool to open the main hole in the solid wall. As shown in the figure, the distance between the surface of the wall after the final treatment and the bottom surface of the opening should be considered to be 65~75mm.

Step1



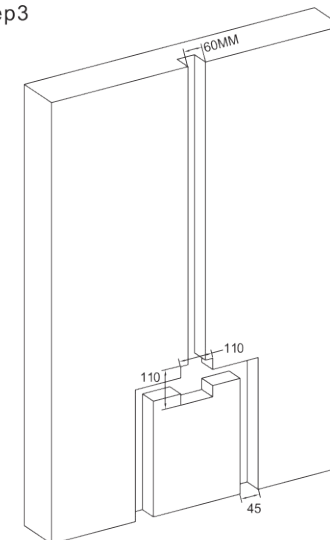
As shown in the figure, the inlet and outlet pipes are pre-buried, pay attention to the correct direction of installing the pre-buried box, and make sure that the mark TOP on the top of the installation box is facing upward.

Step2



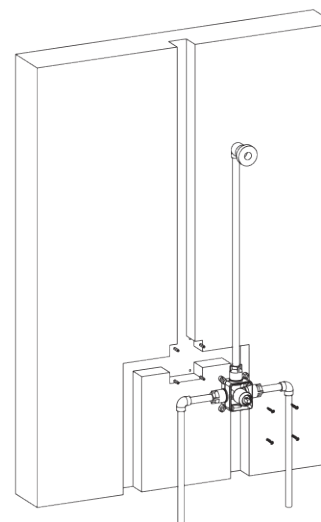
Draw the outline of the connected main body and tubes with a marking pen when place them against the wall, and then prepare for the grooving.

Step3



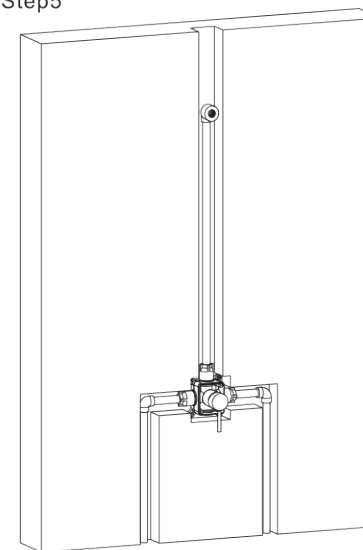
Drill the wall according to the size, and then groove.

Step4



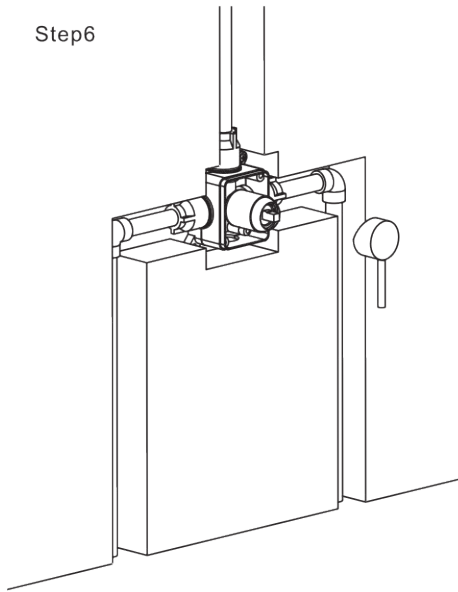
Punch the rubber particles into the wall, and fasten the main body to the wall with screws. 5. Turn the handle and the water divider wheel on the product, then plug the thread of the water in and out with a plug, test the faucet, and there is no water leakage.

Step5



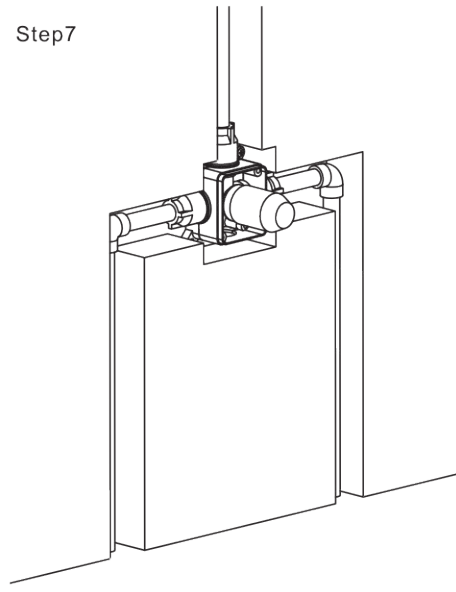
Adjust the handle and the diverter on the product, plug the thread of outlet to test the faucet, ensure there is no leakage. 6. If the water test is no problem, remove the handle and diverter.

Step6



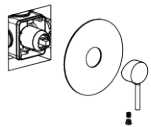
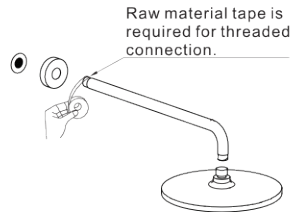
If the water test is no problem, remove the handle and diverter.

Step7



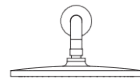
Remember to put the protective cover back before placing the tiles, and tighten the screws to prevent damage to the surface of the main body.

Step8



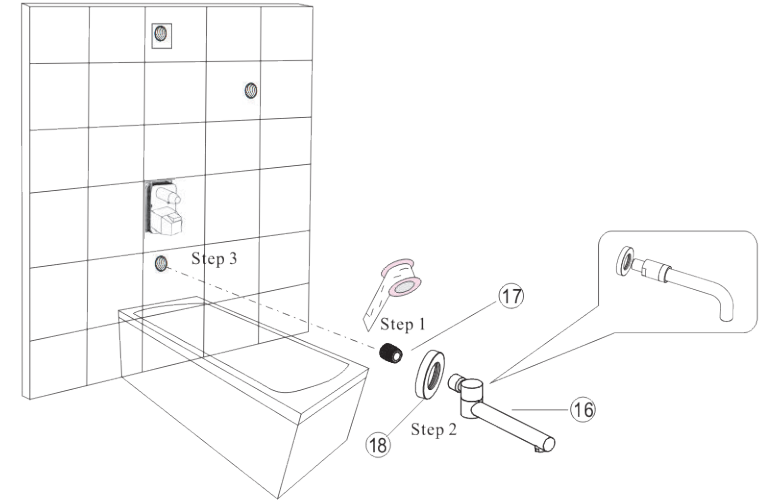
Use sealing tape to seal the thread position needed. After tile fixing, install the handle, showerhead, panel, decorative cover and diverter.

Step9



The product is a single-function concealed shower. When the handle is opened, the showerhead will spray water, and rotate left and right to adjust the hot and cold water.

◆ Model C & D INSTALL THE TUB SPOUT(IF HAVE)



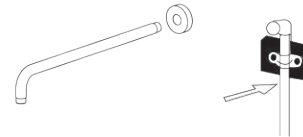
Step1: Connect the copper connector to the bathtub spout and wrap it with waterproof tape.

Step2: Install the round decorative cover.

Step3: Rotate the bathtub spout to connect with the internal thread on the wall.

◆ INSTALLATION OF RAIN SHOWER ARM

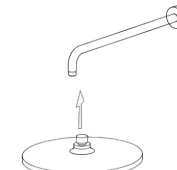
Step 1



Step1.Screw the thread into the water pipe inside the wall.
Screw the main body into the thread.

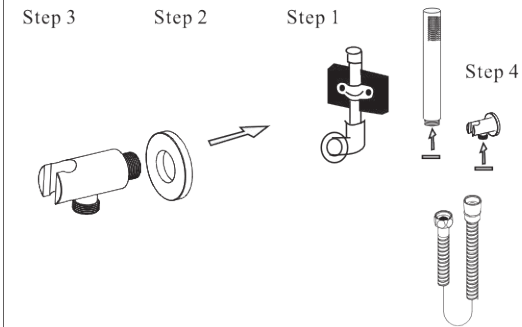
Step2: Connect the rain shower head to the arm.

Step 2



Step2.The rain shower head connects to the arm.

◆ MODEL A & C & D SHOWER HOLDER INSTALLATION



Step1: Install the decorative cover on the shower seat.

Step2.Screw the main body into the thread.

Step3.Connect handle holder with hose and handle shower.

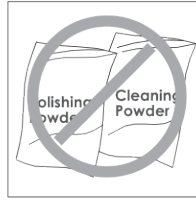
♦ CARE AND MAINTENANCE

In order to keep the mixer surface bright , please clean the mixer regularly.

Rinse faucet with clean water and wipe with soft cotton cloth.

Avoid using cleaning powder , harsh cleaning chemicals, brushes, and cloth with coarse surface to prevent scratching and corrosion.

Do not use acid cleaner to clean the faucet as it may cause surface corrosion of the faucet. If the faucet comes into contact with harmful acid substances, please rinse it with water immediately.



♦ IF A LARGE-SCALE CLEAN-UP IS NECESSARY, FOLLOW THESE PROCEDURES:

1: Use clean water and soft cloth to remove dirt on the surface as much as possible.

2: Use one of the following cleaners to remove dirt on the surface

Mild liquid cleaner.

Colorless glass cleaner, powder cleaner which does not have abrasive function and can be dissolved completely.

Polish liquid which does not have abrasive function.

3: After cleaning, remove the cleansing agent with clean water completely and wipe with soft cotton cloth.

Website: www.casainc.com
Contact Phone Number: (303) 747-4321
Service Contact: service@casainc.com