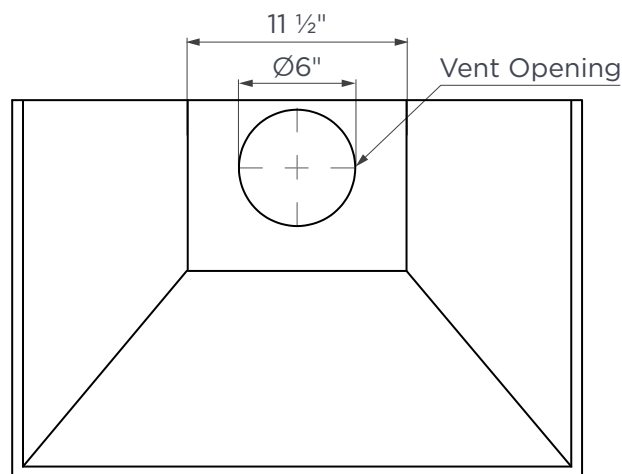
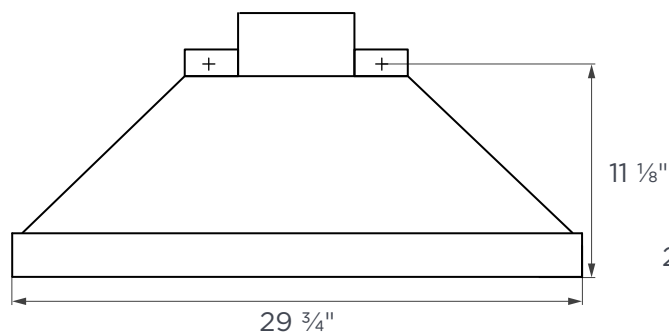


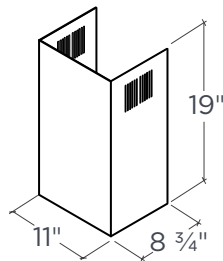
## 30" TECHNICAL DRAWING



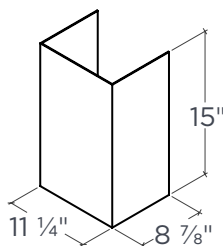
**TOP**



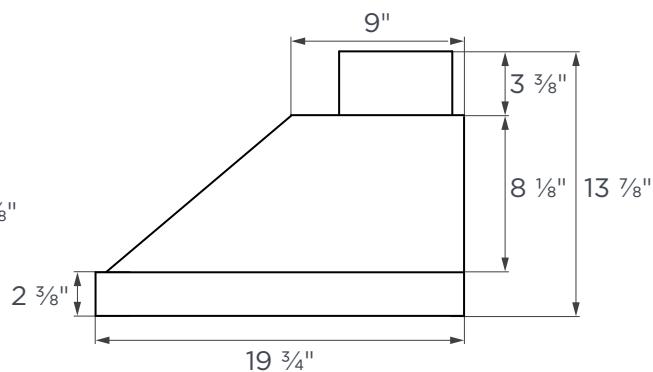
**FRONT**



**UPPER CHIMNEY COVER**

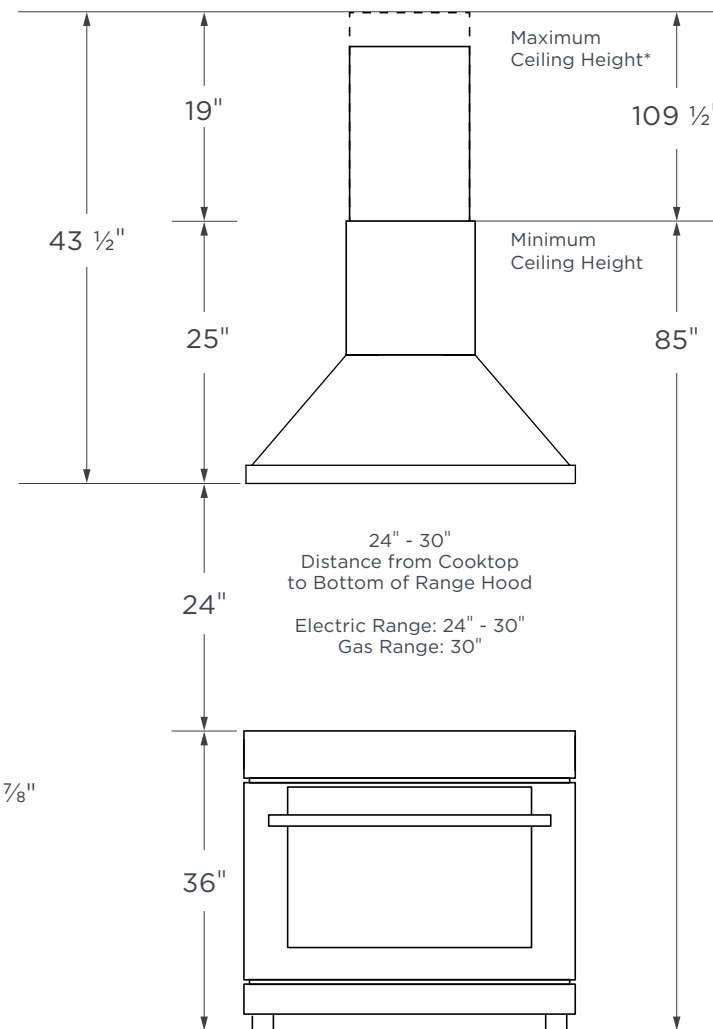


**LOWER CHIMNEY COVER**



**SIDE**

## CEILING HEIGHT GUIDE



NOTE: All dimensions in Inches unless otherwise specified. Dimensions in this Technical drawing may vary by  $\pm \frac{1}{16}$ " (2mm). For detailed installation steps, refer to the user manual. Complete installation instructions and specifications can be found at [hauslane.com](http://hauslane.com).

\*This height range represents the standard maximum and minimum heights. Additional extension (CHE008) requires a separate purchase.