

# allen + roth.

ALLEN + ROTH and logo design are trademarks or registered trademarks of LF, LLC. All rights reserved.

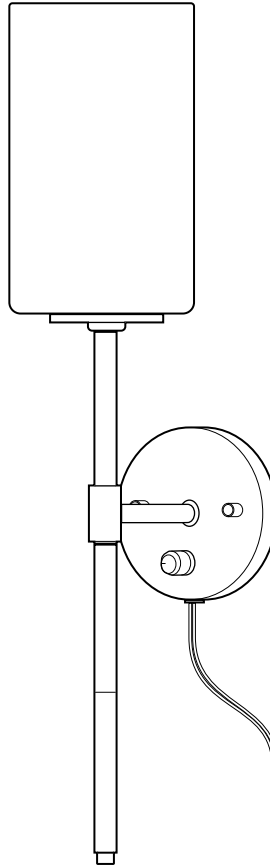
ITEM #4968591/5989654/5989655

MODEL #WS22GD/WS22BK/WS22BNK

## WALL SCONCE

Español p. 13

ATTACH YOUR RECEIPT HERE



Purchase Date \_\_\_\_\_



**For  
Damp Location**



Thank you for purchasing this ALLEN + ROTH product.

Questions, problems, missing parts?

Before returning, contact us on:

**866-439-9800**, 8 a.m-8 p.m., EST, Monday-Sunday or **ascs@lowes.com**.

TABLE OF CONTENTS

Package Contents ..... 2

Hardware Contents ..... 3

Safety Information ..... 3

Preparation ..... 4

Hardwire Assembly Instructions ..... 5

Plug-in Assembly Instructions ..... 10

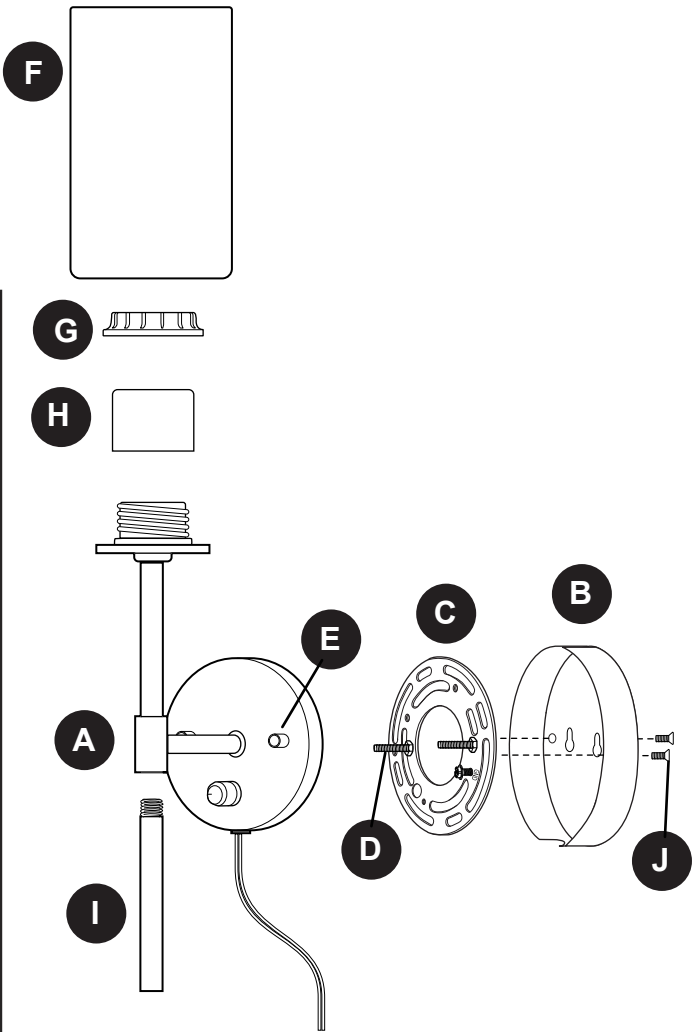
Care and Maintenance ..... 12

Troubleshooting ..... 12

Warranty ..... 12

PACKAGE CONTENTS

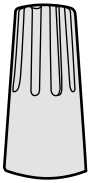
| PART | DESCRIPTION  | QUANTITY |
|------|--|----------|
| A    | Fixture  | 1        |
| B    | Back Plate<br>(preassembled to fixture (A))                  | 1        |
| C    | Mounting Plate<br>(preassembled to back plate (B))           | 1        |
| D    | Mounting Plate Screw<br>(preassembled to mounting plate (C)) | 2        |
| E    | Decorative Nut (preassembled<br>to mounting plate screw (D)) | 2        |
| F    | Shade  | 1        |
| G    | Socket ring<br>(preassembled to fixture (A))                 | 1        |
| H    | Socket cover<br>(preassembled to fixture (A))                | 1        |
| I    | Rod  | 2        |
| J    | Back Plate Screw<br>(preassembled to back plate (B))         | 2        |



## HARDWARE CONTENTS (shown actual size)

---

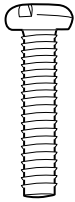
AA



Wire  
Connector

Qty. 1  
+2 extra

BB



Machine  
Screw

Qty. 2

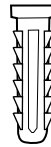
CC



Wall Anchor  
Screw

Qty. 2

DD



Wall  
Anchor

Qty. 2

EE



Cap

Qty. 1

## SAFETY INFORMATION

---

### READ AND SAVE THESE INSTRUCTIONS

#### DANGER

- For your protection and safety, carefully read and understand the information provided in this manual completely before attempting to assemble, install or operate this product. Failure to do so could lead to fire, electrical shock or other injuries that could be hazardous or even fatal.
- TURN OFF ELECTRICITY at main fuse box (or circuit breaker box) before beginning installation by removing the fuse (or switching the circuit breaker off).
- DO NOT connect this fixture to an electrical system that does not provide a means for equipment grounding. Never use a fixture in a two-wire system that is not grounded. Installing a fixture into an electrical system not having a proper grounding means could cause metal parts of the fixture to carry electrical currents if any of the fixture wires, wire connections or splices were to become broken, cut or loose during the mounting or normal operation of the fixture. Under this condition, anyone coming in contact with the fixture would be subject to electrical shock, which could cause serious injury or death.
- DO NOT connect the BARE or GREEN insulation fixture ground wire to the BLACK (HOT) current-carrying wire or the WHITE (NEUTRAL) house wire. Connection of the BARE or GREEN fixture ground wire to the BLACK or WHITE house wires may cause metal parts of the fixture to carry electrical currents. Under this condition anyone coming in contact with the fixture will receive electrical shock, which could cause serious injury or death.
- DO NOT damage or cut the wire insulation (covering) during installation of fixture. DO NOT permit wires to contact any surface having a sharp edge. To do so may damage or cut the wire insulation, which could cause serious injury or death from electrical shock.

#### WARNING

- All electrical connections must be in agreement with local codes and ordinances, the National Electric Code (NEC) and ANSI/NFPA 70-1999. Contact your municipal building department to learn about your local codes, permits and/or inspections. Risk of fire - most dwellings built before 1985 have supply wire rated for 140 °F (60 °C). Consult a qualified electrician before installation.
- To avoid personal injury, the use of gloves may be necessary while handling fixture parts with sharp edges.

## SAFETY INFORMATION

---

### WARNING

- To reduce the risk of damage to the fixture, DO NOT use power tools to assemble any part of the fixture.
- DO NOT suspend any fixture by the house wires. A fixture must always be mounted directly to an outlet box or to a mounting plate which is first attached to the outlet box. Wire connectors will not support the weight of a fixture. Suspending a fixture by the house wires and wire connectors will result in the fixture falling, with the possibility of personal injury and the danger of electrical shock or fire.
- To reduce the risk of fire, electrical shock or personal injury, wire connectors provided with this light fixture are designed to accept only one 12-gauge house wire and two lead wires from the light fixture. If your house wire is larger than 12-gauge or there is more than one house wire to connect to the corresponding fixture lead wires, consult an electrician for the proper size wire connectors to use.
- If applicable, always unplug this product before replacing bulb.
- To reduce the risk of electric shock, DO NOT use the product if power cord is frayed or broken.
- THIS PORTABLE LAMP HAS A POLARIZED PLUG (ONE BLADE IS WIDER THAN THE OTHER) AS A SAFETY FEATURE TO REDUCE THE RISK OF ELECTRIC SHOCK. THIS PLUG WILL FIT IN A POLARIZED OUTLET ONLY ONE WAY. IF IT DOES NOT FIT FULLY IN THE OUTLET, REVERSE THE PLUG. IF IT STILL DOES NOT FIT, CONTACT A QUALIFIED ELECTRICIAN. NEVER USE WITH AN EXTENSION CORD UNLESS THE PLUG CAN BE FULLY INSERTED. DO NOT ALTER THE PLUG.

### CAUTION

- If you are not sure the lighting system has a grounding means, DO NOT attempt to install this fixture. Contact a qualified, licensed electrician for information regarding the proper grounding methods as required by the local electrical code in your area.
- All fixtures must be mounted to an outlet box that is supported by the building structure.
- If a dimmer control switch is used with this fixture, obtain professional advice to determine the correct type to use as well as the electrical rating required.
- DO NOT use bulbs having a wattage greater than the maximum value stated on the fixture. The use of bulbs with higher wattage than specified will increase temperatures and risk of fire.

## PREPARATION

---

Before beginning assembly of product, make sure all parts are present. Compare parts with package contents list and hardware contents list. If any part is missing or damaged, do not attempt to assemble the product.

### **Estimated Assembly Time: 30 - 45 minutes**

Tools Required for Assembly (not included): Flathead Screwdriver, Phillips Screwdriver, Flat-Nose Pliers, Safety Glasses, Stepladder, Electrical Tape, Pencil/Marker, Gloves, Drill, 1/8 Drill Bit, Hammer

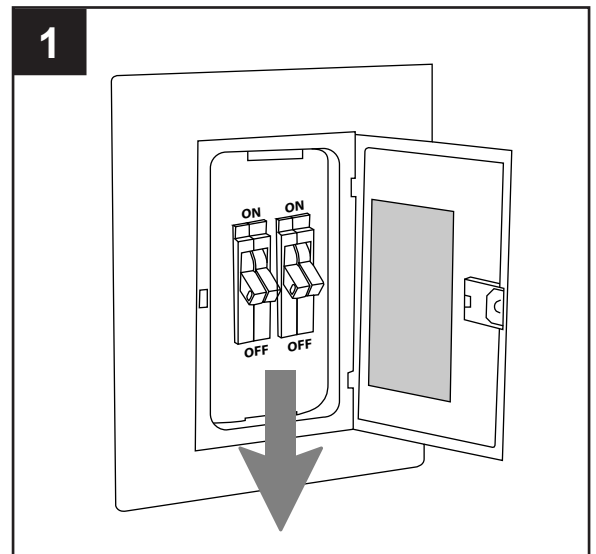
Helpful Tools (not included): A/C Tester Light, Do-It-Yourself Guide, Soft Cloth

## HARDWIRE ASSEMBLY INSTRUCTIONS

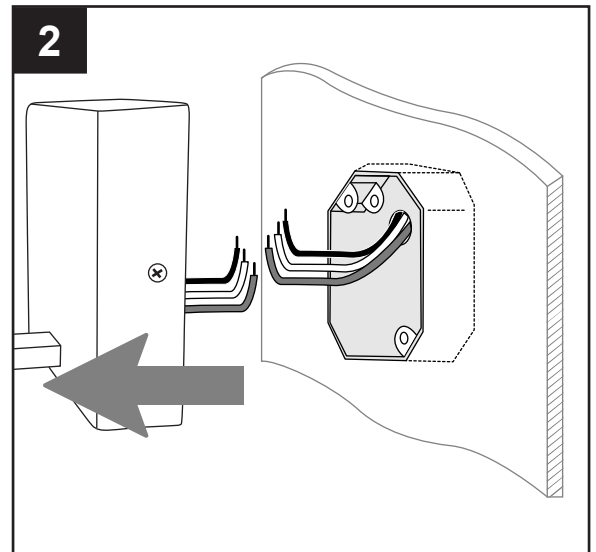
1. If you wish to use the fixture as a plug-in lamp, please refer to Plug-in Assembly Instructions on page 9.

Turn off circuit breakers and wall switch to the fixture supply line leads.

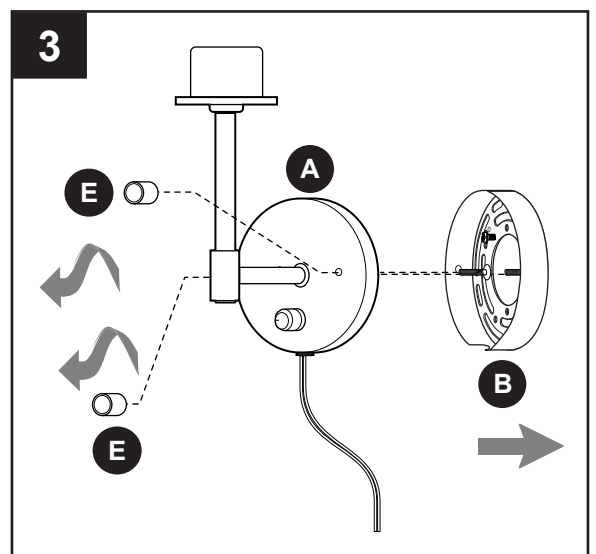
**⚠ DANGER:** Failure to disconnect power supply prior to installation may result in serious injury or death.



2. Remove existing fixture and disconnect all electrical wiring.



3. Remove back plate (B) from fixture (A) by removing decorative nuts (E) from the front of the fixture (A). Save decorative nuts (E) for later use.



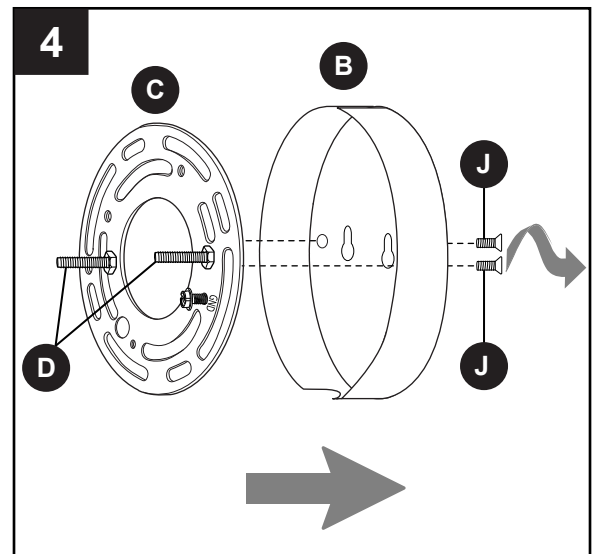
## HARDWARE ASSEMBLY INSTRUCTIONS

4. Remove mounting plate (C) from back plate (B) by removing back plate screws (J).

**NOTE:** Make sure NOT to remove mounting plate screws (D).

Save back plate (B) and back plate screws (J) for later use.

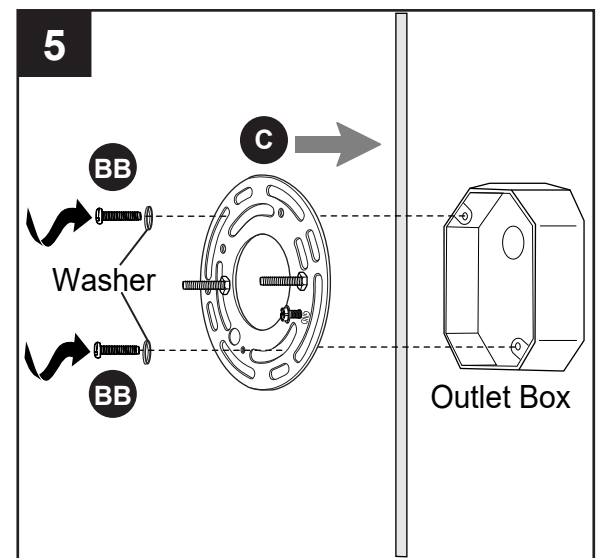
**Tip:** If desired, back plate (B) and back plate screws (J) may be saved if alternative PLUG-IN ASSEMBLY will be used later.



5. **⚠ CAUTION:** The fixture (A) must be mounted to an outlet box that is supported by the building structure and can support the weight of the fixture (A). Plastic outlet boxes are not recommended.

Attach mounting plate (C) to outlet box (not included) using existing washers and outlet box screws or the machine screws (BB).

**NOTE:** If the outlet box screws required for your outlet box are of a different size than the machine screws (BB), consult a licensed electrician before proceeding. Tighten machine screws (BB) to secure mounting plate (C).



### Hardware Used

**BB** Machine Screw  x 2

## HARDWIRE ASSEMBLY INSTRUCTIONS

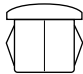
- 6a. Locate the two individual wires from cord connected in preassembled lever wire connector and firmly lift those levers. Gently remove wires.

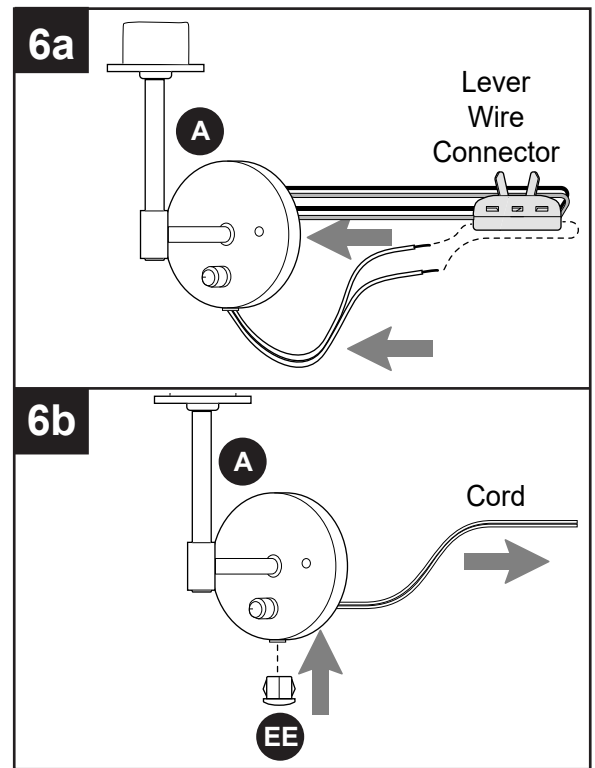
**IMPORTANT:** Disconnect ONLY the wires from the plug. Do NOT disconnect other wires

- 6b. from lever wire connector.

Undo knot from cord and pull cord through fixture (A). After removing cord, remove plastic sleeve preassembled in fixture (A) and then replace with cap (EE).

### Hardware Used

|           |     |   |     |
|-----------|-----|---|-----|
| <b>EE</b> | Cap |  | x 1 |
|-----------|-----|---|-----|



## HARDWIRE ASSEMBLY INSTRUCTIONS

7. Insert WHITE wire from outlet box into opening in lever wire connector that corresponds with WHITE wire from fixture (A) (BLUE lever) and return lever to original position. Insert BLACK wire from outlet box into opening in lever wire connector that corresponds with BLACK wire from fixture (A) (RED lever) and return lever to original position.

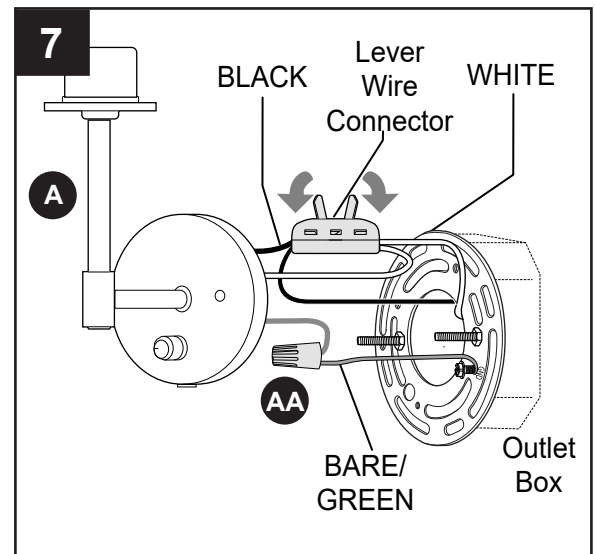
**⚠ WARNING:** GENTLY pull on wires lever wire connector to confirm the locks are engaged and that wires are secure.

Connect BARE/GREEN ground wire from outlet box to BARE ground wire from fixture (A) with wire connector (AA).

**NOTE:** Screw wire connector (AA) on in a clockwise direction.

**⚠ WARNING:** Never connect ground wire to WHITE or BLACK power supply wires.

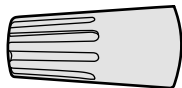
**⚠ WARNING:** To reduce the risk of fire, electrical shock, or personal injury, wire connectors (AA) provided with this light fixture are designed to accept only one 12-gauge house wire and two lead wires from the light fixture. If your house wire is larger than 12-gauge or there is more than one house wire to connect to the corresponding fixture lead wires, consult an electrician for the proper size wire connectors to use.



### Hardware Used

AA

Wire Connector



x 1

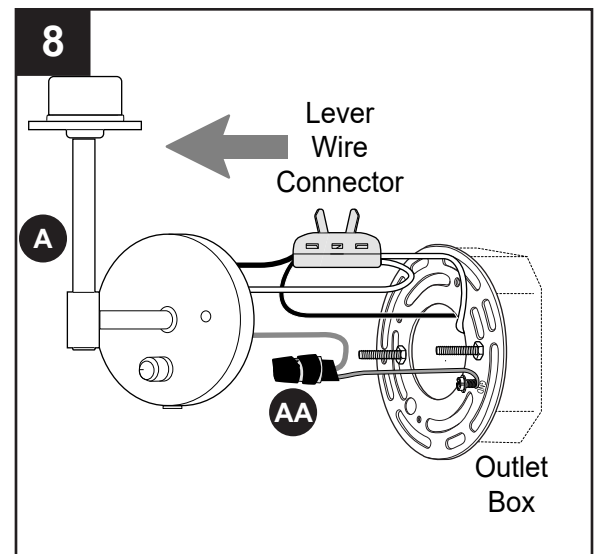


## HARDWIRE ASSEMBLY INSTRUCTIONS

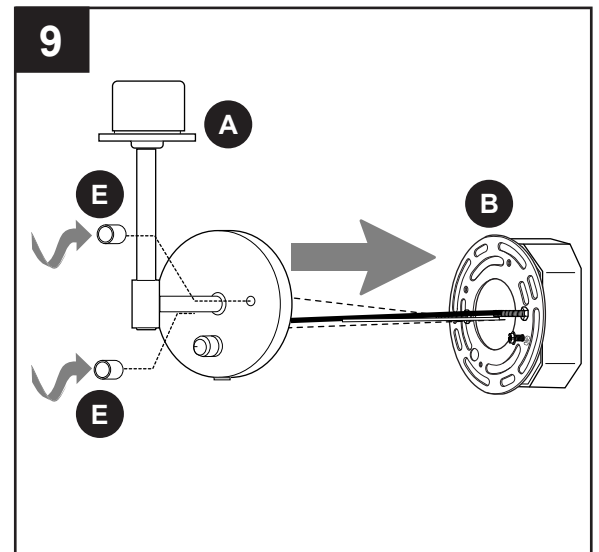
8. Wrap electrical tape (not included) around wire connector (AA) down to the wire.

**⚠ WARNING:** Make sure no bare wire or wire strands are visible after making connections.

Push wire connector (AA) and lever wire connector gently back into outlet box. Carefully push excess wiring into outlet box.



9. Attach fixture (A) to mounting plate (C) using the decorative nuts (E) previously removed (Step 3, Page 5).

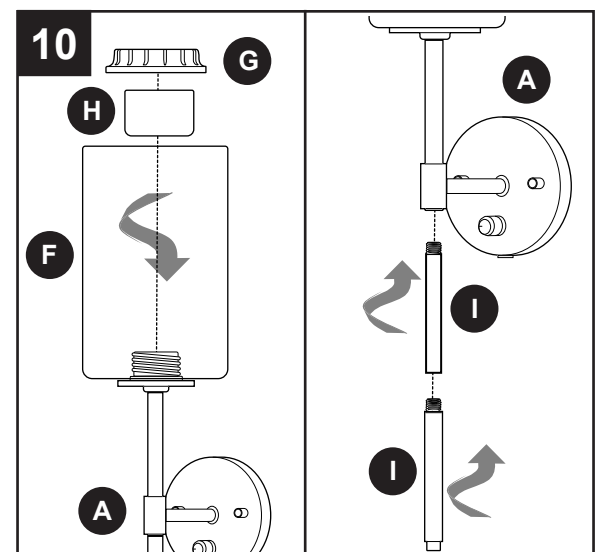


10. Remove socket ring (G) and socket cover (H) from socket on fixture (A).

Attach shade (F) to fixture (A) by replacing socket cover (H) and socket ring (G).

**⚠ WARNING:** Do NOT overtighten socket ring (G) as shade (F) may crack or break.

Thread rods (I) into the underside of the fixture (A).



## HARDWIRE ASSEMBLY INSTRUCTIONS

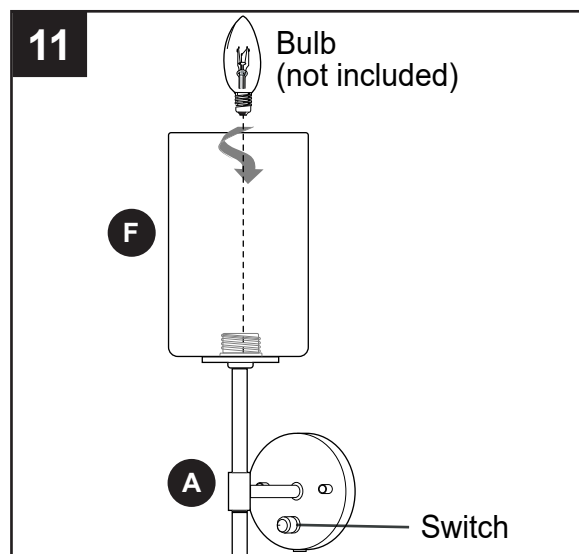
11. Install one 40-watt max. candelabra base incandescent bulb (not included) or CFL/LED equivalent.

**⚠ WARNING:** When replacing bulb, allow bulb, shade (F) and fixture (A) to cool down before touching.

Restore power and test fixture (A).

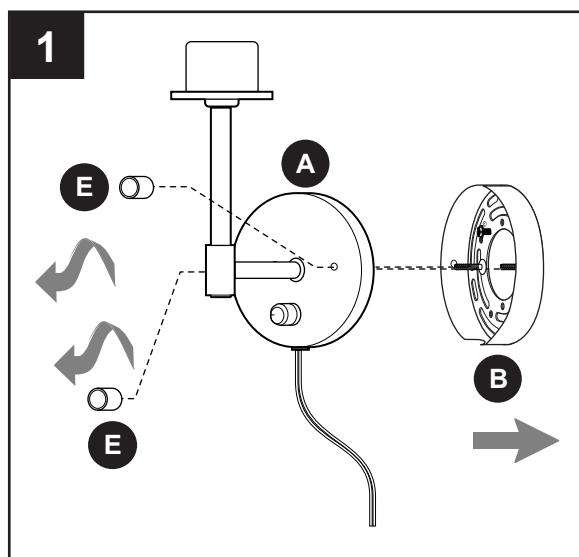
**NOTE:** Use preassembled switch on fixture (A) to turn lamp ON, OFF and dim light.

If light does not function, please refer to TROUBLESHOOTING on page 12.



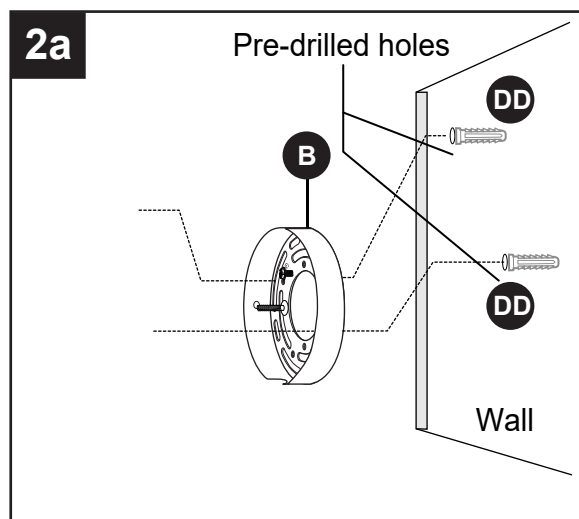
## PLUG-IN ASSEMBLY INSTRUCTIONS

1. Remove back plate (B) from fixture (A) by removing decorative nuts (E) from the front of the fixture (A). Save decorative nuts (E) for later use.



- 2a. Determine the location for the fixture (A). Place the back plate (B) against the wall and mark the location of the slots on the back plate (B) using a pencil or a marker (not included). Set back plate (B) aside.



Then, using a 1/8 in. drill bit (not included), drill two pilot holes at the marked locations. Gently tap wall anchors (DD) into holes with a hammer (not included) until flush with wall surface.



## PLUG-IN ASSEMBLY INSTRUCTIONS

- 2b. Tighten hex nuts on mounting plate screws (D) as necessary to secure mounting plate screws (D) to back plate (B). Partially screw wall anchor screws (CC) into wall anchors (DD). Align slotted holes in back plate (B) with loosened wall anchor screws (CC) and allow back plate (B) to rest on wall anchor screws (CC). Secure back plate (B) to wall by securely tightening wall anchor screws (CC).

### Hardware Used

|           |                   |   |     |
|-----------|-------------------|---|-----|
| <b>CC</b> | Wall Anchor Screw |  | x 2 |
| <b>DD</b> | Wall Anchor       |  | x 2 |

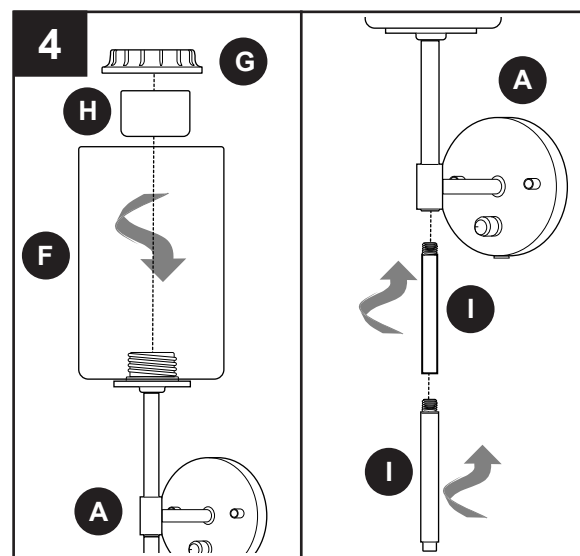
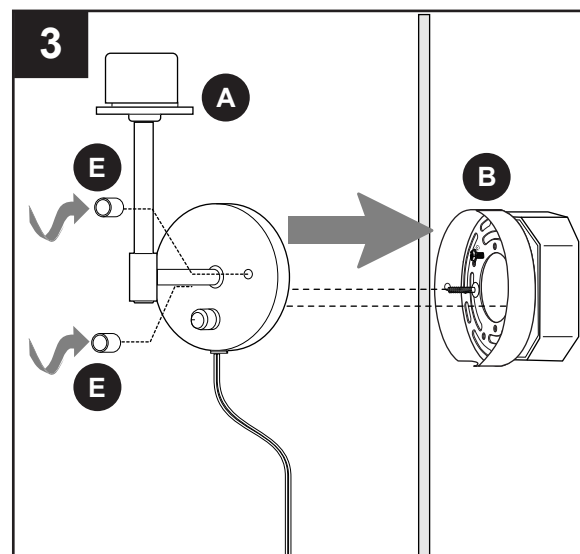
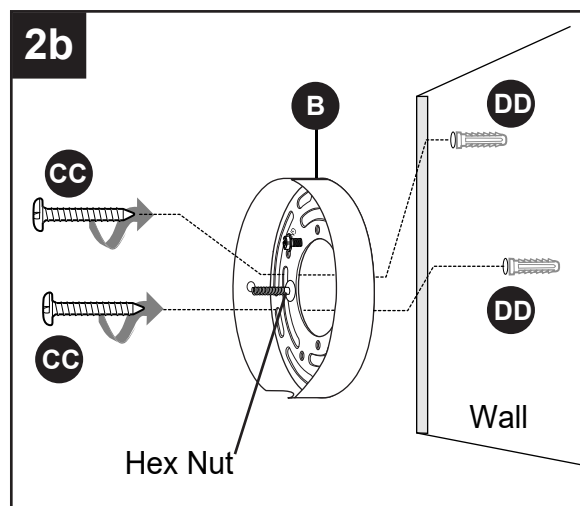
3. Attach fixture (A) to back plate (B) using the decorative nuts (E) previously removed (Step 1, Page 10).

4. Remove socket ring (G) and socket cover (H) from socket on fixture (A).

Attach shade (F) to fixture (A) by replacing socket cover (H) and socket ring (G).

**⚠ WARNING:** Do NOT overtighten socket ring (G) as shade (F) may crack or break.

Thread rods (I) into the underside of the fixture (A).



## PLUG-IN ASSEMBLY INSTRUCTIONS

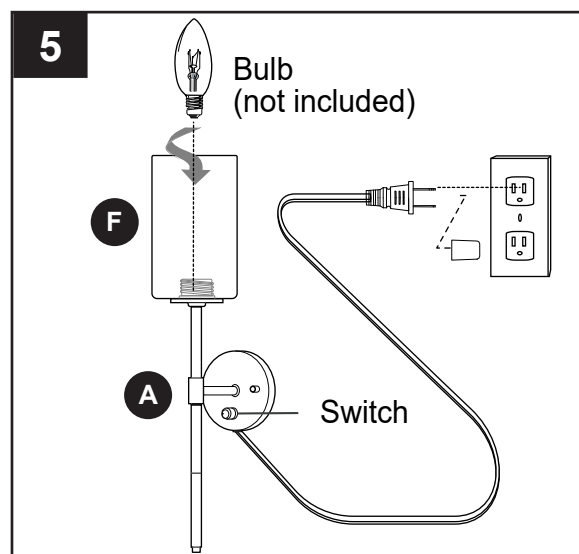
5. Install one 40-watt max. candelabra base incandescent bulb (not included) or CFL/LED equivalent.

**⚠ WARNING:** When replacing bulb, allow bulb, shade (F) and fixture (A) to cool down before touching.

Remove preassembled cap from end of power cord and plug power cord into wall outlet.

**NOTE:** Use preassembled switch on fixture (A) to turn lamp ON, OFF and dim light.

If light does not function, please refer to TROUBLESHOOTING below.



## CARE AND MAINTENANCE

- Shut off main power supply or unplug. Wipe with soft cloth or use window cleaner. Do not use an abrasive cleaner.

## TROUBLESHOOTING

**⚠ WARNING:** Before beginning work, shut off the power supply to avoid electrical shock.

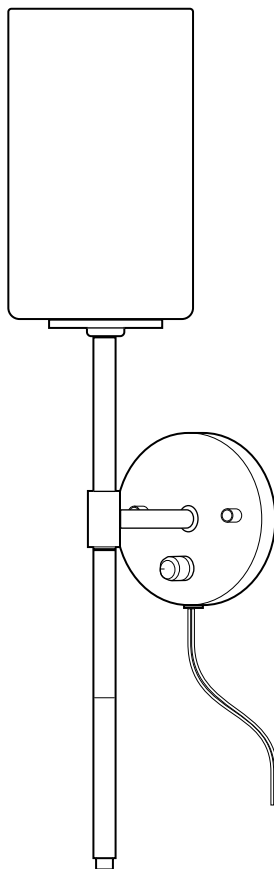
| PROBLEM                                  | POSSIBLE CAUSE  | CORRECTIVE ACTION  |
|--|---|--|
| Bulb will not light.                     | 1. Bulb is burned out.<br>2. Power is OFF.<br>3. Faulty connection. | 1. Replace light bulb.<br>2. Make sure power supply is ON.<br>3. Check wiring and all connections. |
| Fuse blows out or circuit breaker trips. | 1. Crossed wires.<br>2. Power wire is grounding out.                | 1. Check wiring.<br>2. Check all connections.  |

## WARRANTY

The distributor warrants all of its lighting fixtures against defects in materials and workmanship for one (1) year from the date of purchase. If within this period the product is found to be defective, take a copy of the bill of sale as a proof of purchase and the product in its original carton to the place of purchase. The distributor will, at its option, repair, replace or refund the purchase price to the consumer. All costs of installation and removal of the fixture is the responsibility of the consumer. This warranty does not cover fixtures becoming defective due to misuse, accidental damage or improper handling and/or installation and specifically excludes liability for direct, incidental or consequential damages, improper packaging of returned products and acts of God. As some states do not allow exclusions of limitations on an implied warranty, the above exclusion and limitation may not apply. This warranty gives you specific rights and you may also have other rights which may vary from state to state.

allen + roth.

welcoming • sophisticated • inspiring



**For  
Damp Location**

ALLEN + ROTH and logo design are trademarks or registered trademarks of LF, LLC. All rights reserved.

ITEM #4968591/5989654/5989655  
MODEL #WS22GD/WS22BK/WS22BNK

## WALL SCONCE

**Español p. 13**

ATTACH YOUR RECEIPT HERE

Purchase Date \_\_\_\_\_



Thank you for purchasing this ALLEN + ROTH product.

Questions, problems, missing parts?

Before returning, contact us on:

**866-439-9800**, 8 a.m-8 p.m., EST, Monday-Sunday or **ascs@lowes.com**.

**TABLE OF CONTENTS**

Package Contents ..... 2

Hardware Contents ..... 3

Safety Information ..... 3

Preparation ..... 4

Hardwire Assembly Instructions ..... 5

Plug-in Assembly Instructions ..... 10

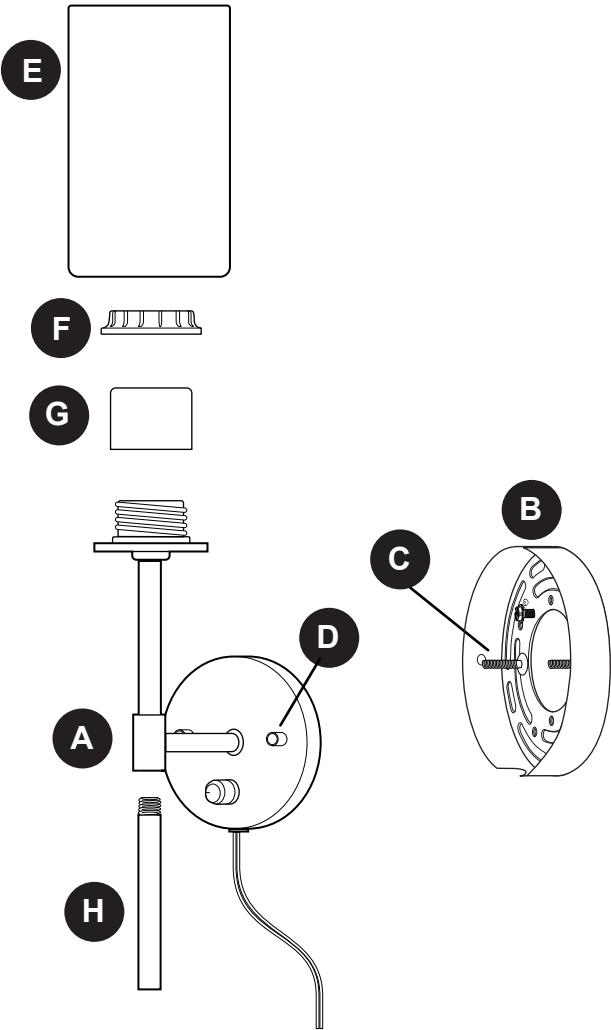
Care and Maintenance ..... 12

Troubleshooting ..... 12

Warranty ..... 12

**PACKAGE CONTENTS**

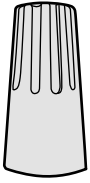
| PART | DESCRIPTION                                     | QUANTITY |
|------|---|----------|
| A    | Fixture   | 1        |
| B    | Mounting Plate<br>(preassembled to fixture (A)) | 1        |
| C    | Screw (preassembled to<br>mounting plate (B))   | 2        |
| D    | Decorative nut<br>preassembled to screw (C))    | 2        |
| E    | Shade   | 1        |
| F    | Socket ring<br>(preassembled to fixture (A))    | 1        |
| G    | Socket cover<br>(preassembled to fixture (A))   | 1        |
| H    | Rod   | 2        |



## HARDWARE CONTENTS (shown actual size)

---

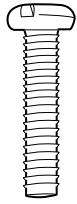
AA



Wire  
Connector

Qty. 1  
+2 extra

BB



Machine  
Screw

Qty. 2

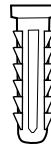
CC



Wall Anchor  
Screw

Qty. 2

DD



Wall  
Anchor

Qty. 2

EE



Cap

Qty. 1

## SAFETY INFORMATION

---

### READ AND SAVE THESE INSTRUCTIONS

#### DANGER

- For your protection and safety, carefully read and understand the information provided in this manual completely before attempting to assemble, install or operate this product. Failure to do so could lead to fire, electrical shock or other injuries that could be hazardous or even fatal.
- TURN OFF ELECTRICITY at main fuse box (or circuit breaker box) before beginning installation by removing the fuse (or switching the circuit breaker off).
- DO NOT connect this fixture to an electrical system that does not provide a means for equipment grounding. Never use a fixture in a two-wire system that is not grounded. Installing a fixture into an electrical system not having a proper grounding means could cause metal parts of the fixture to carry electrical currents if any of the fixture wires, wire connections or splices were to become broken, cut or loose during the mounting or normal operation of the fixture. Under this condition, anyone coming in contact with the fixture would be subject to electrical shock, which could cause serious injury or death.
- DO NOT connect the BARE or GREEN insulation fixture ground wire to the BLACK (HOT) current-carrying wire or the WHITE (NEUTRAL) house wire. Connection of the BARE or GREEN fixture ground wire to the BLACK or WHITE house wires may cause metal parts of the fixture to carry electrical currents. Under this condition anyone coming in contact with the fixture will receive electrical shock, which could cause serious injury or death.
- DO NOT damage or cut the wire insulation (covering) during installation of fixture. DO NOT permit wires to contact any surface having a sharp edge. To do so may damage or cut the wire insulation, which could cause serious injury or death from electrical shock.

#### WARNING

- All electrical connections must be in agreement with local codes and ordinances, the National Electric Code (NEC) and ANSI/NFPA 70-1999. Contact your municipal building department to learn about your local codes, permits and/or inspections. Risk of fire - most dwellings built before 1985 have supply wire rated for 140 °F (60 °C). Consult a qualified electrician before installation.
- To avoid personal injury, the use of gloves may be necessary while handling fixture parts with sharp edges.

## SAFETY INFORMATION

---

### WARNING

- To reduce the risk of damage to the fixture, DO NOT use power tools to assemble any part of the fixture.
- DO NOT suspend any fixture by the house wires. A fixture must always be mounted directly to an outlet box or to a mounting plate which is first attached to the outlet box. Wire connectors will not support the weight of a fixture. Suspending a fixture by the house wires and wire connectors will result in the fixture falling, with the possibility of personal injury and the danger of electrical shock or fire.
- To reduce the risk of fire, electrical shock or personal injury, wire connectors provided with this light fixture are designed to accept only one 12-gauge house wire and two lead wires from the light fixture. If your house wire is larger than 12-gauge or there is more than one house wire to connect to the corresponding fixture lead wires, consult an electrician for the proper size wire connectors to use.
- If applicable, always unplug this product before replacing bulb.
- To reduce the risk of electric shock, DO NOT use the product if power cord is frayed or broken.
- THIS PORTABLE LAMP HAS A POLARIZED PLUG (ONE BLADE IS WIDER THAN THE OTHER) AS A SAFETY FEATURE TO REDUCE THE RISK OF ELECTRIC SHOCK. THIS PLUG WILL FIT IN A POLARIZED OUTLET ONLY ONE WAY. IF IT DOES NOT FIT FULLY IN THE OUTLET, REVERSE THE PLUG. IF IT STILL DOES NOT FIT, CONTACT A QUALIFIED ELECTRICIAN. NEVER USE WITH AN EXTENSION CORD UNLESS THE PLUG CAN BE FULLY INSERTED. DO NOT ALTER THE PLUG.

### CAUTION

- If you are not sure the lighting system has a grounding means, DO NOT attempt to install this fixture. Contact a qualified, licensed electrician for information regarding the proper grounding methods as required by the local electrical code in your area.
- All fixtures must be mounted to an outlet box that is supported by the building structure.
- If a dimmer control switch is used with this fixture, obtain professional advice to determine the correct type to use as well as the electrical rating required.
- DO NOT use bulbs having a wattage greater than the maximum value stated on the fixture. The use of bulbs with higher wattage than specified will increase temperatures and risk of fire.

## PREPARATION

---

Before beginning assembly of product, make sure all parts are present. Compare parts with package contents list and hardware contents list. If any part is missing or damaged, do not attempt to assemble the product.

### **Estimated Assembly Time: 30 - 45 minutes**

Tools Required for Assembly (not included): Flathead Screwdriver, Phillips Screwdriver, Flat-Nose Pliers, Safety Glasses, Stepladder, Electrical Tape, Pencil/Marker, Gloves, Drill, 1/8 Drill Bit, Hammer

Helpful Tools (not included): A/C Tester Light, Do-It-Yourself Guide, Soft Cloth

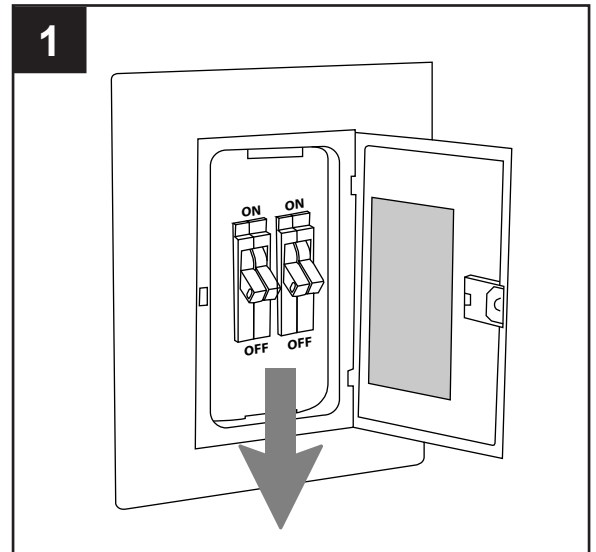


## HARDWIRE ASSEMBLY INSTRUCTIONS

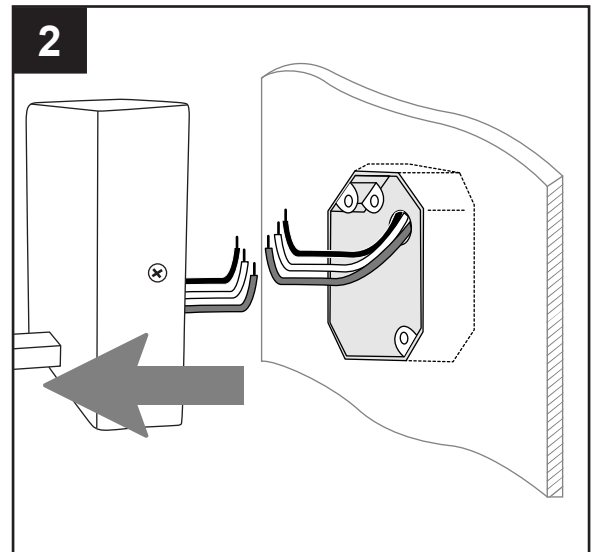
1. If you wish to use the fixture as a plug-in lamp, please refer to Plug-in Assembly Instructions on page 9.

Turn off circuit breakers and wall switch to the fixture supply line leads.

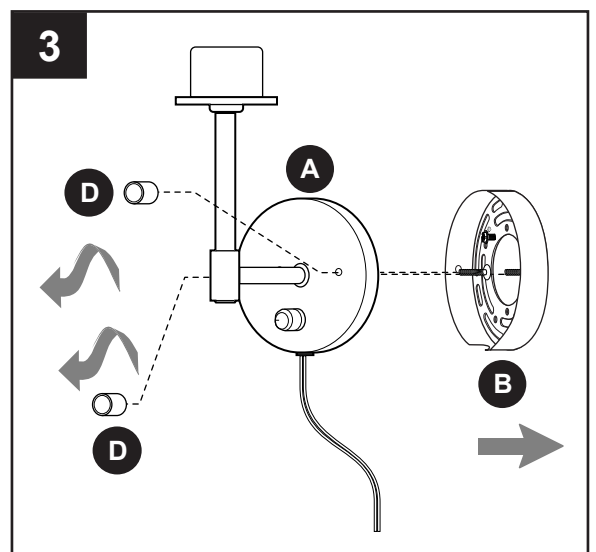
**⚠ DANGER:** Failure to disconnect power supply prior to installation may result in serious injury or death.



2. Remove existing fixture and disconnect all electrical wiring.



3. Remove mounting plate (B) from fixture (A) by removing decorative nuts (D) from the front of the fixture (A). Save decorative nuts (D) for later use.

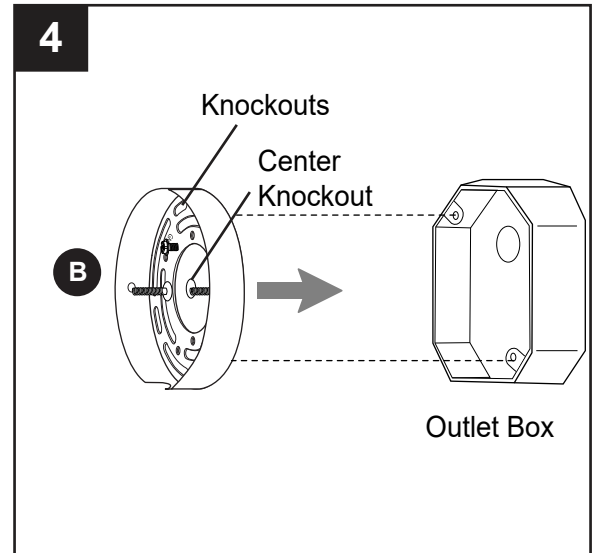


## HARDWIRE ASSEMBLY INSTRUCTIONS

4. Temporarily align mounting plate (B) with screw holes in outlet box (not included) to determine which knockouts will need to be removed.

**IMPORTANT:** Knockout on center of mounting plate (B) **MUST** be removed for proper wiring.

**NOTE:** Knockouts closest to outlet box screw holes should be removed for proper mounting. If desired, all knockouts can be removed.



- 5a. **⚠ WARNING:** To avoid personal injury, gloves **MUST** be worn while disassembling mounting plate (B) to prevent contact with sharp edges. Safety glasses are also **HIGHLY** recommended while handling removable metal pieces.

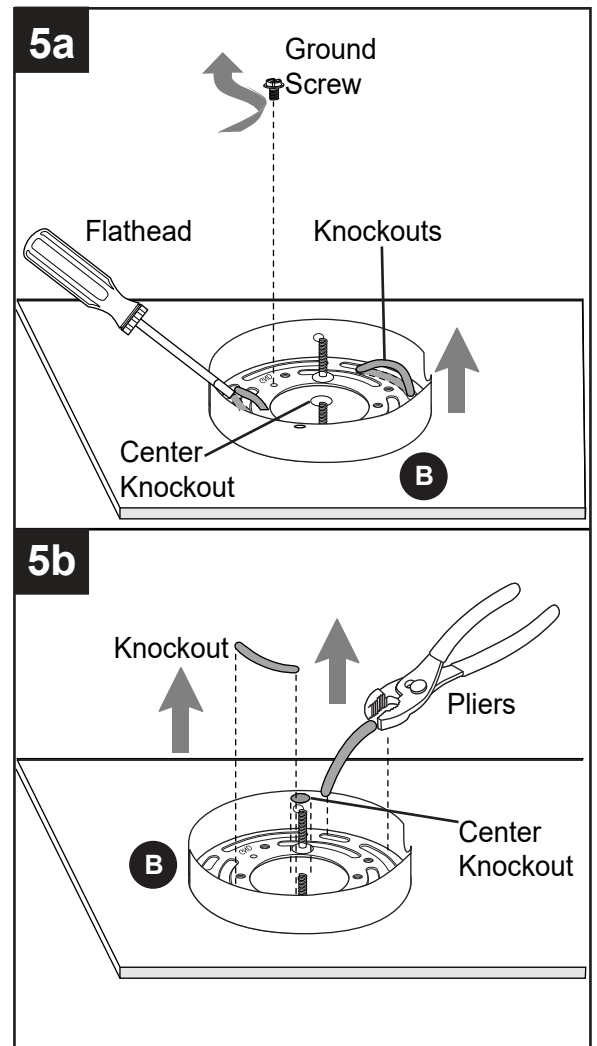
It may be necessary to temporarily remove ground screw (labeled GND) in mounting plate (B) to make sure mounting plate (B) is flat.

Place mounting plate (B), flat-side down, on a flat, slip-resistant surface. Insert a flathead screwdriver (not included) under the raised edge of one of the knockouts that will be removed. Use the screwdriver as a lever to pry up gently and carefully on the knockout.

- 5b. **⚠ WARNING:** To avoid personal injury, be careful **NOT** to allow your face to get too close to where you are working. In addition, for safety reasons, **DO NOT** allow others to be close by while removing metal pieces.

Use pliers (not included) to grasp knockout firmly once it has been pried up. Then carefully move knockout back and forth until it can be removed. Repeat Steps 5a and 5b as necessary for remaining knockouts.

**NOTE:** The use of flat-nose pliers is recommended.



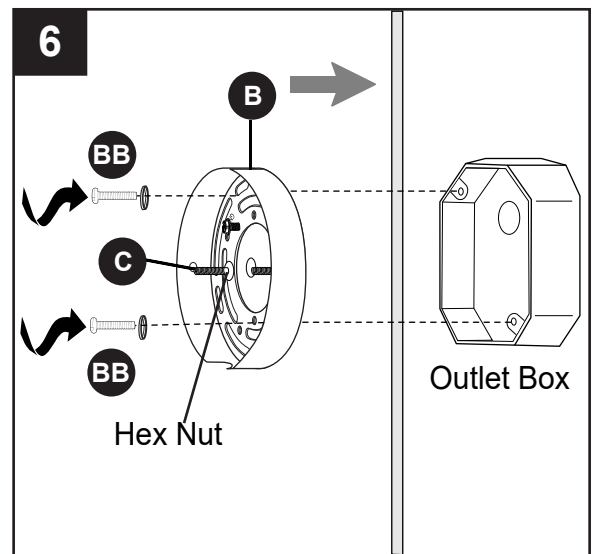
## HARDWIRE ASSEMBLY INSTRUCTIONS

6. **NOTE:** If you removed the ground screw in Step 5a, be sure to replace it before continuing.

Attach mounting plate (B) to outlet box (not included) using existing washers and outlet box screws or the machine screws (BB).

**NOTE:** If the outlet box screws required for your outlet box are of a different size than the machine screws (BB), consult a licensed electrician before proceeding. Tighten hex nuts on screws (C) as necessary to secure screws (C) to mounting plate (B).

**! CAUTION:** The fixture must be mounted to an outlet box that is supported by the building structure and can support the weight of the fixture. Plastic outlet boxes are not recommended.



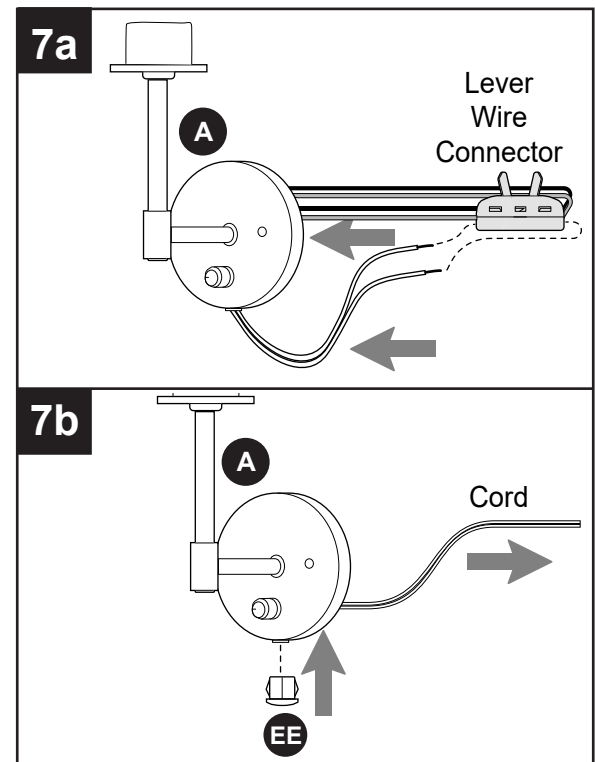
### Hardware Used

**BB** Machine Screw  x 2

- 7a. Locate the two individual wires from cord connected in preassembled lever wire connector and firmly lift those levers. Gently remove wires.

**IMPORTANT:** Disconnect ONLY the wires from the plug. Do NOT disconnect other wires from lever wire connector.

- 7b. Undo knot from cord and pull cord through fixture (A). After removing cord, remove plastic sleeve preassembled in fixture (A) and then replace with cap (EE).



### Hardware Used

**EE** Cap  x 1

## HARDWIRE ASSEMBLY INSTRUCTIONS

8. Insert WHITE wire from outlet box into opening in lever wire connector that corresponds with WHITE wire from fixture (A) (BLUE lever) and return lever to original position. Insert BLACK wire from outlet box into opening in lever wire connector that corresponds with BLACK wire from fixture (A) (RED lever) and return lever to original position.

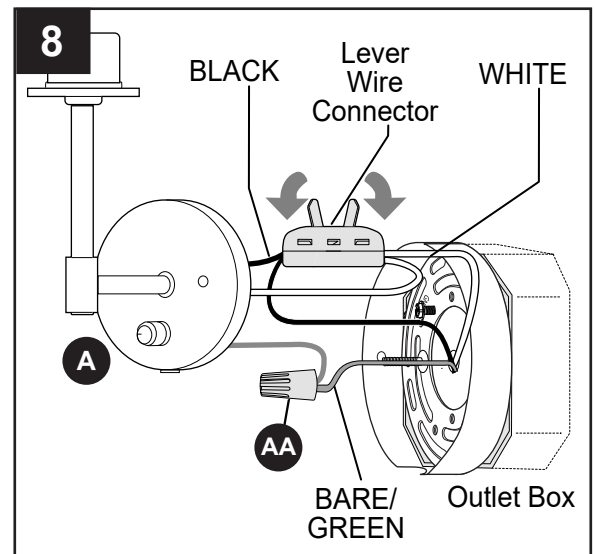
**⚠ WARNING:** GENTLY pull on wires lever wire connector to confirm the locks are engaged and that wires are secure.

Connect BARE/GREEN ground wire from outlet box to BARE ground wire from fixture (A) with wire connector (AA).

**NOTE:** Screw wire connector (AA) on in a clockwise direction.

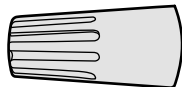
**⚠ WARNING:** Never connect ground wire to WHITE or BLACK power supply wires.

**⚠ WARNING:** To reduce the risk of fire, electrical shock, or personal injury, wire connectors (AA) provided with this light fixture are designed to accept only one 12-gauge house wire and two lead wires from the light fixture. If your house wire is larger than 12-gauge or there is more than one house wire to connect to the corresponding fixture lead wires, consult an electrician for the proper size wire connectors to use.



### Hardware Used

**AA** Wire Connector



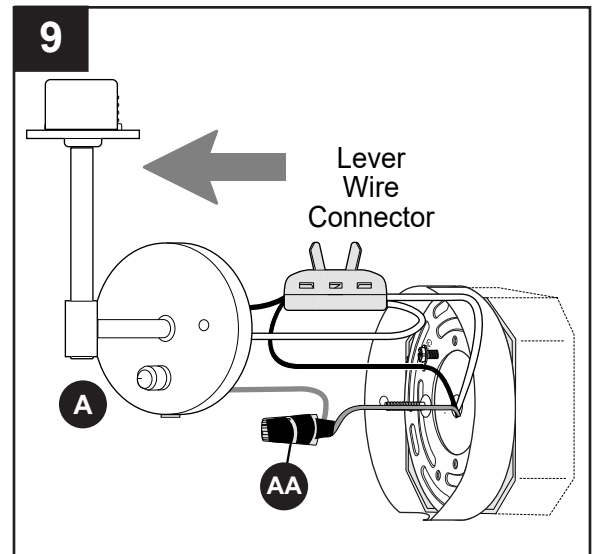
x 1

## HARDWIRE ASSEMBLY INSTRUCTIONS

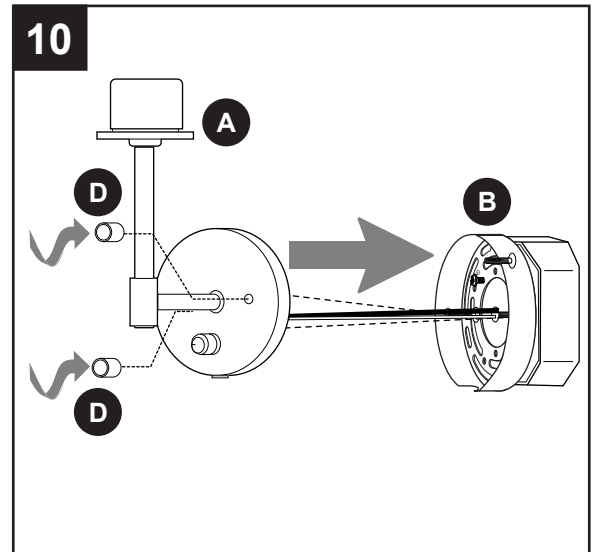
9. Wrap electrical tape (not included) around wire connector (AA) down to the wire.

**⚠ WARNING:** Make sure no bare wire or wire strands are visible after making connections.

Push wire connector (AA) and lever wire connector gently back into outlet box. Carefully push excess wiring into outlet box.



10. Attach fixture (A) to mounting plate (B) using the decorative nuts (D) previously removed (Step 3, Page 5).

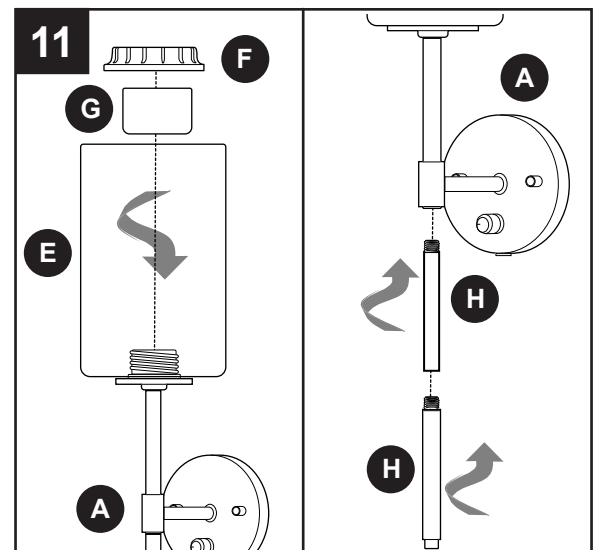


11. Remove socket ring (F) and socket cover (G) from socket on fixture (A).

Attach shade (E) to fixture (A) by replacing socket cover (G) and socket ring (F).

**⚠ WARNING:** Do NOT overtighten socket ring (F) as shade (E) may crack or break.

Thread rods (H) into the underside of the fixture (A).



## HARDWIRE ASSEMBLY INSTRUCTIONS

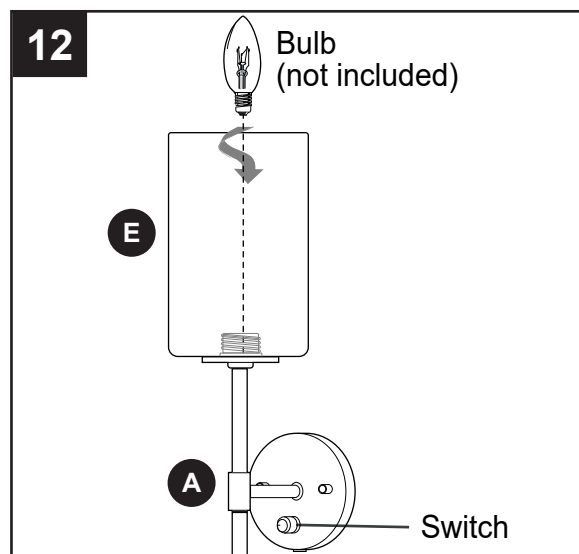
12. Install one 40-watt max. candelabra base incandescent bulb (not included) or CFL/LED equivalent.

**⚠ WARNING:** When replacing bulb, allow bulb, shade (E) and fixture (A) to cool down before touching.

Restore power and test fixture (A).

**NOTE:** Use preassembled switch on fixture (A) to turn lamp ON, OFF and dim light.

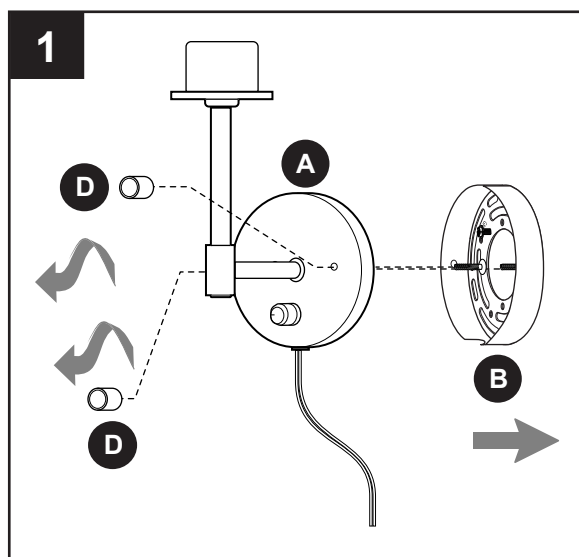
If light does not function, please refer to TROUBLESHOOTING on page 12.



## PLUG-IN ASSEMBLY INSTRUCTIONS

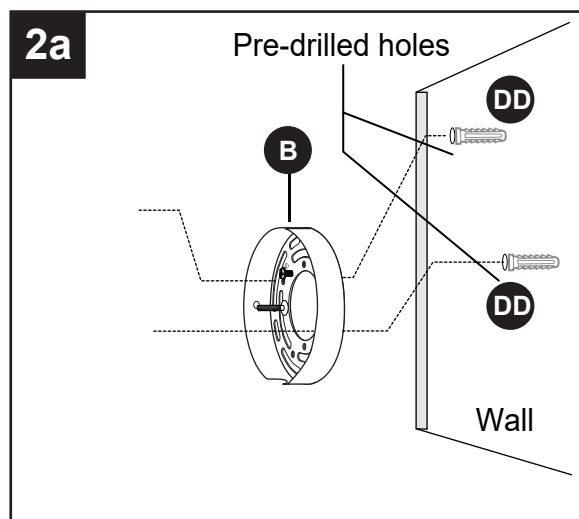
1. Remove mounting plate (B) from fixture (A) by removing decorative nuts (D) from the front of the fixture (A). Save decorative nuts (D) for later use.

Remove ground screw (labeled GND) from mounting plate (B). **NOTE:** Ground screw will not be necessary in this type of installation.



- 2a. Determine the location for the fixture (A). Place the mounting plate (B) against the wall and mark the location of the slots on the mounting plate (B) using a pencil or a marker (not included). Set mounting plate (B) aside.



Then, using a 1/8 in. drill bit (not included), drill two pilot holes at the marked locations. Gently tap wall anchors (DD) into holes with a hammer (not included) until flush with wall surface.

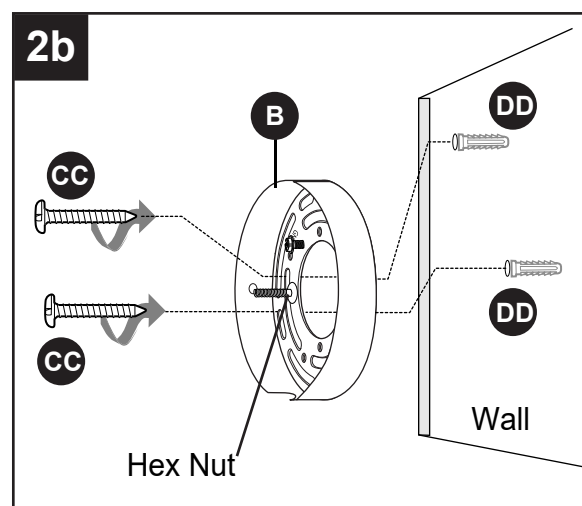


## PLUG-IN ASSEMBLY INSTRUCTIONS

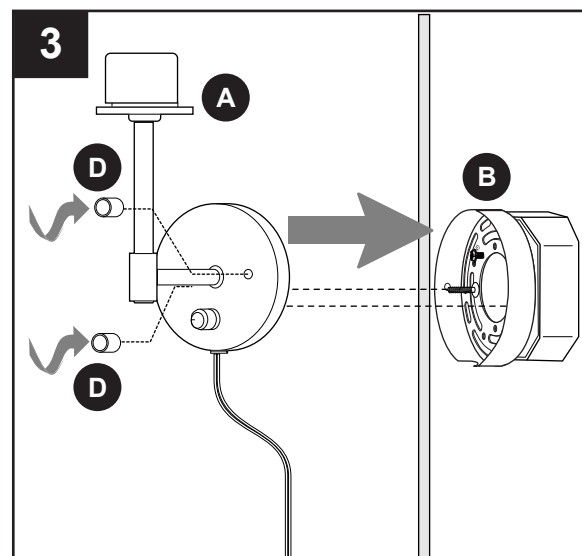
- 2b. Tighten hex nuts on screws (C) as necessary to secure screws (C) to mounting plate (B). Partially screw wall anchor screws (CC) into wall anchors (DD). Align slotted holes in mounting plate (B) with loosened wall anchor screws (CC) and allow mounting plate (B) to rest on wall anchor screws (CC). Secure mounting plate (B) to wall by securely tightening wall anchor screws (CC).

### Hardware Used

|           |                   |   |     |
|-----------|-------------------|---|-----|
| <b>CC</b> | Wall Anchor Screw |  | x 2 |
| <b>DD</b> | Wall Anchor       |  | x 2 |



3. Attach fixture (A) to mounting plate (B) using the decorative nuts (D) previously removed (Step 1, Page 10).

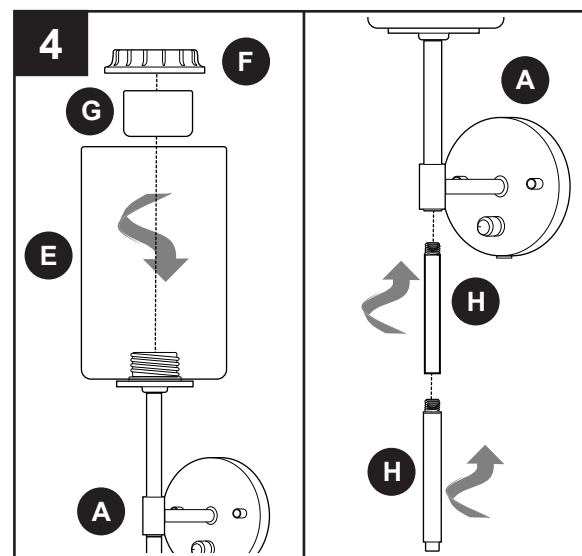


4. Remove socket ring (F) and socket cover (G) from socket on fixture (A).

Attach shade (E) to fixture (A) by replacing socket cover (G) and socket ring (F).

**⚠ WARNING:** Do NOT overtighten socket ring (F) as shade (E) may crack or break.

Thread rods (H) into the underside of the fixture (A).



## PLUG-IN ASSEMBLY INSTRUCTIONS

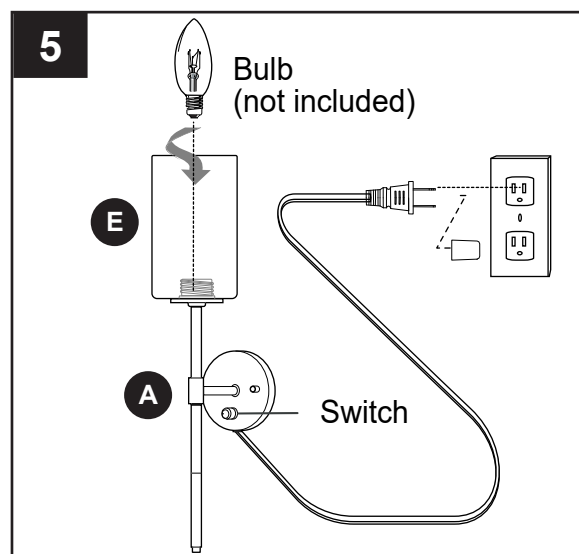
5. Install one 40-watt max. candelabra base incandescent bulb (not included) or CFL/LED equivalent.

**⚠ WARNING:** When replacing bulb, allow bulb, shade (E) and fixture (A) to cool down before touching.

Remove preassembled cap from end of power cord and plug power cord into wall outlet.

**NOTE:** Use preassembled switch on fixture (A) to turn lamp ON, OFF and dim light.

If light does not function, please refer to TROUBLESHOOTING below.



## CARE AND MAINTENANCE

- Shut off main power supply or unplug. Wipe with soft cloth or use window cleaner. Do not use an abrasive cleaner.

## TROUBLESHOOTING

**⚠ WARNING:** Before beginning work, shut off the power supply to avoid electrical shock.

| PROBLEM                                  | POSSIBLE CAUSE  | CORRECTIVE ACTION  |
|--|---|--|
| Bulb will not light.                     | 1. Bulb is burned out.<br>2. Power is OFF.<br>3. Faulty connection. | 1. Replace light bulb.<br>2. Make sure power supply is ON.<br>3. Check wiring and all connections. |
| Fuse blows out or circuit breaker trips. | 1. Crossed wires.<br>2. Power wire is grounding out.                | 1. Check wiring.<br>2. Check all connections.  |

## WARRANTY

The distributor warrants all of its lighting fixtures against defects in materials and workmanship for one (1) year from the date of purchase. If within this period the product is found to be defective, take a copy of the bill of sale as a proof of purchase and the product in its original carton to the place of purchase. The distributor will, at its option, repair, replace or refund the purchase price to the consumer. All costs of installation and removal of the fixture is the responsibility of the consumer. This warranty does not cover fixtures becoming defective due to misuse, accidental damage or improper handling and/or installation and specifically excludes liability for direct, incidental or consequential damages, improper packaging of returned products and acts of God. As some states do not allow exclusions of limitations on an implied warranty, the above exclusion and limitation may not apply. This warranty gives you specific rights and you may also have other rights which may vary from state to state.