

Prestige - Single Handle Pressure Balanced Tub & Shower Set



- * Pressure Balanced & Ceramic (Type F)
- * Solid Brass Waterway Construction with 1/2" - 14 NPT Connection
- * Integral Stops, Diverter Tub Spout
- * 6-3/4" Six Function Massage Plastic Shower Head, Zinc Handle
- * Stainless Steel Shower Arm
- * Stainless Steel Round Plate
- * Zinc Die Cast Tub Spout
- * Shower Head Flow Rate: 1.5GPM @ 80PSI
- * Tub Spout Flow Rate: 6.5GPM @ 80PSI
- * 100% Pressure System Tested
- * Lifetime Limited Warranty; 5 year warranty from date of purchase for Commercial users.

| | |
|----------------------|--|
| Project / Job Name | |
| Architect / Engineer | |
| Contractor | |
| Model | |
| Quantity | |

Model No. :



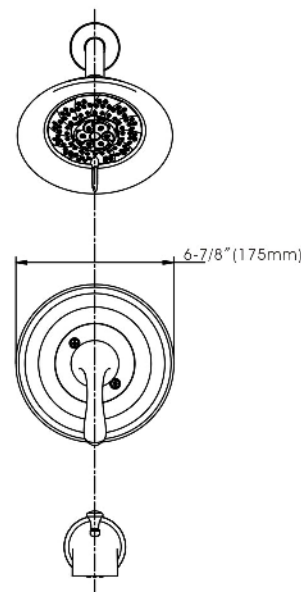
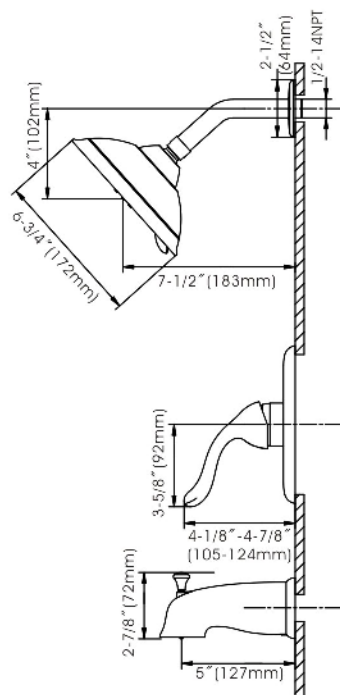
201-7722 (CH)
(Shown Model)



201-7723 (BN *Spotless PVD*)



201-7724 (ORB)



Cartridge (Type F)



Product Compliance:

- ASME A112.18.1 / CSA B125.1
- ANSI A117.1 (ADA)
- ASSE 1016

Prestige - Single Handle Pressure Balanced Tub & Shower Set



- * Pressure Balanced & Ceramic (Type F)
- * Solid Brass Waterway Construction with 1/2" -14 NPT Connection
- * Integral Stops, Diverter Tub Spout
- * 6-3/4" Six Function Massage Plastic Shower Head, Zinc Handle
- * Stainless Steel Shower Arm
- * Stainless Steel Round Plate
- * Zinc Die Cast Tub Spout
- * Shower Head Flow Rate: 1.5GPM @ 80PSI
- * Tub Spout Flow Rate: 6.5GPM @ 80PSI
- * 100% Pressure System Tested
- * Lifetime Limited Warranty; 5 year warranty from date of purchase for Commercial users.

| | |
|----------------------|--|
| Project / Job Name | |
| Architect / Engineer | |
| Contractor | |
| Model | |
| Quantity | |

Model No. :



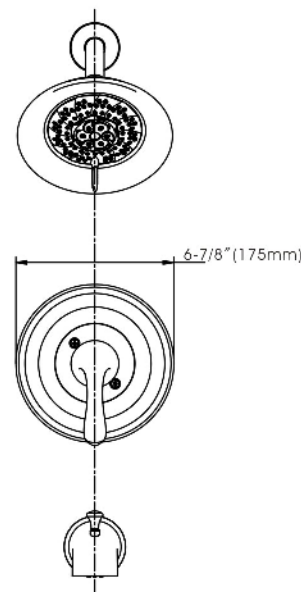
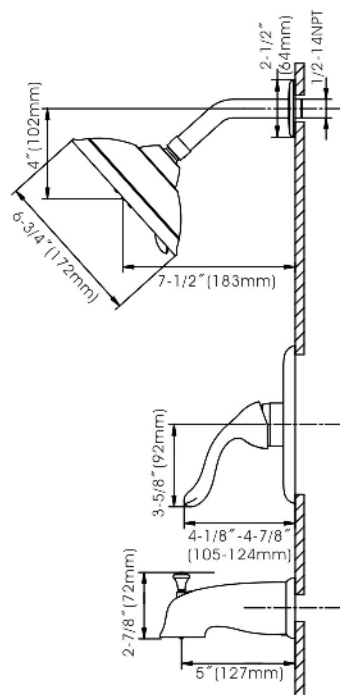
201-7722 (CH)



201-7723 (BN **Spotless PVD**)
(Shown Model)



201-7724 (ORB)



Cartridge (Type F)



Product Compliance:

- ASME A112.18.1 / CSA B125.1
- ANSI A117.1 (ADA)
- ASSE 1016

Prestige - Single Handle Pressure Balanced Tub & Shower Set



- * Pressure Balanced & Ceramic (Type F)
- * Solid Brass Waterway Construction with 1/2" - 14 NPT Connection
- * Integral Stops, Diverter Tub Spout
- * 6-3/4" Six Function Massage Plastic Shower Head, Zinc Handle
- * Stainless Steel Shower Arm
- * Stainless Steel Round Plate
- * Zinc Die Cast Tub Spout
- * Shower Head Flow Rate: 1.5GPM @ 80PSI
- * Tub Spout Flow Rate: 6.5GPM @ 80PSI
- * 100% Pressure System Tested
- * Lifetime Limited Warranty; 5 year warranty from date of purchase for Commercial users.

| | |
|----------------------|--|
| Project / Job Name | |
| Architect / Engineer | |
| Contractor | |
| Model | |
| Quantity | |

Model No. :



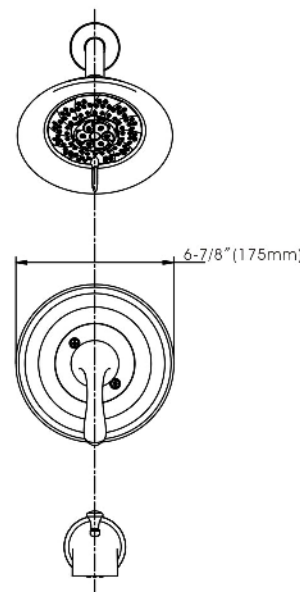
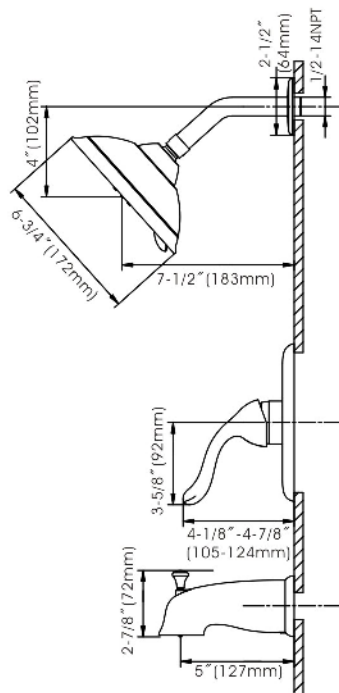
201-7722 (CH)



201-7723 (BN **Spotless PVD**)



201-7724 (ORB)
(Shown Model)



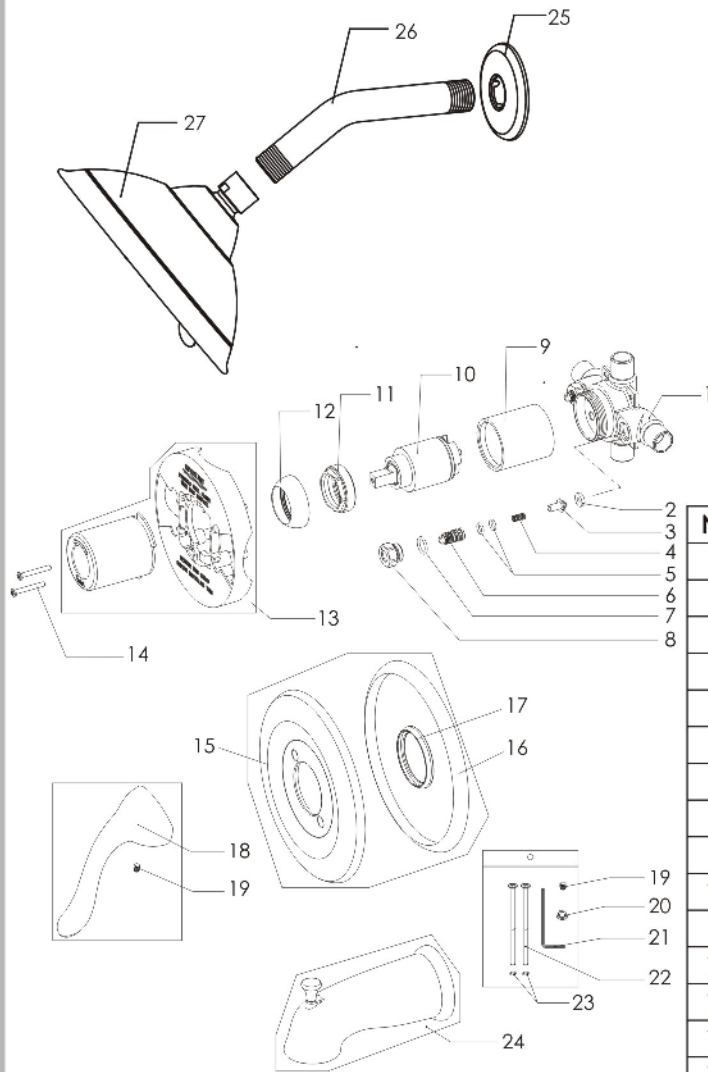
Cartridge (Type F)



Product Compliance:

- ASME A112.18.1 / CSA B125.1
- ANSI A117.1 (ADA)
- ASSE 1016

Prestige - Single Handle Pressure Balanced Tub & Shower Set



Model No. :

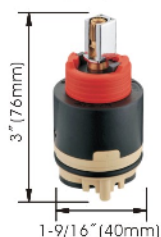
201-7722 (Polished Chrome)

201-7723 (Brushed Nickel **Spotless PVD**)

201-7724 (Oil-Rubbed Bronze)

| No. | Part Name | Material |
|-----|--------------------|-----------------|
| 1 | Valve Body | Brass |
| 2 | Sealing Washer | Rubber |
| 3 | Stopper | Brass |
| 4 | Spring | Stainless Steel |
| 5 | O-Ring | Rubber |
| 6 | Adjuster | Brass |
| 7 | O-Ring | Rubber |
| 8 | Adjuster Seat | Brass |
| 9 | Cartridge Sleeve | Zinc |
| 10 | Cartridge | Ceramic |
| 11 | Cartridge Lock Nut | Brass |
| 12 | Trim Cap | Plastic |
| 13 | Protective Kit | Plastic |
| 14 | Screw | Stainless Steel |
| 15 | Escutcheon | Stainless Steel |
| 16 | Sealing Ring | Rubber |
| 17 | Sealing Ring | Rubber |
| 18 | Handle | Zinc |
| 19 | Set Screw | Stainless Steel |
| 20 | Button | Plastic |
| 21 | Allen Key | Steel |
| 22 | Screw | Stainless Steel |
| 23 | O-Ring | Rubber |
| 24 | Tub Spout | Zinc |
| 25 | Shower Arm Flange | Stainless Steel |
| 26 | Shower Arm | Stainless Steel |
| 27 | Shower Head | Plastic |

Cartridge (Type F)



Technical Support: warranty@cmiproduct.com
Hour of Operation: Mon - Fri 8:30 a.m - 5:00 p.m. EST