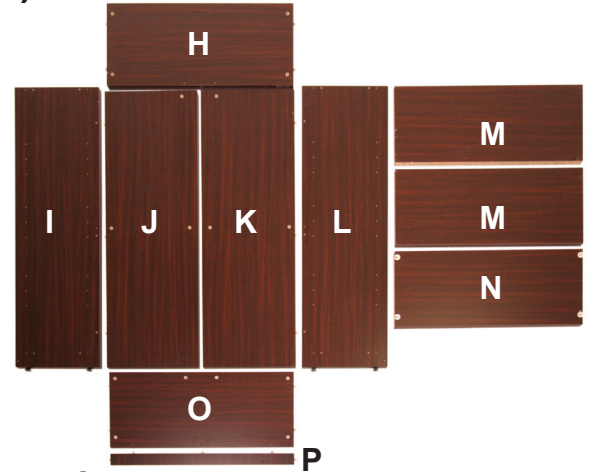
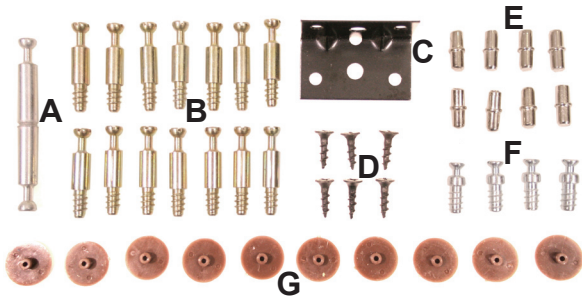


LBC4732 (L4732BC), VBC4732 (V4732BC) - INSTRUCTIONS

Organize your parts and hardware.

Hardware should include:

- A) 1 Double Cam Lock
- B) 14 Cam Locks
- C) 1 L-Bracket D) 6 Screws
- E) 8 Shelf Support Pins
- F) 4 Locking Shelf Support Pins (4 Locks should already be in Center Shelf)
- G) 10 Caps



Wooden Components include:

- H) 1 Top Shelf I) 1 Left Side J) 1 Left Back K) 1 Right Back L) 1 Right Side
- M) 2 Adjustable Shelves N) 1 Locking Center Shelf O) 1 Bottom Shelf P) 1 Bottom Support

NOTE: When identifying components, remember that the bottom edge of the Side and Back Pieces is black.

Tools Required: Phillips Screwdriver

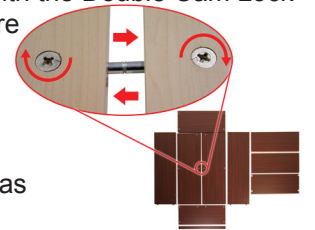
Step 1: Thread Cam Locks (B) into small holes in Bookcase Sides, Back pieces, and Top.



Step 2: Check Cams to make sure that the arrow is pointing toward the hole in the side as shown.



Step 3: Attach Back Pieces (J, K) together with the Double Cam Lock (A). Secure pieces together by turning cams clockwise as shown.



Step 4: Attach Bottom Support (P) to Bottom Shelf (O); insert dowel rods on the Support into holes on the bottom of Shelf. Attach L-Bracket (C) with Screws (D) as shown.



Step 5: Attach Top and Bottom Shelves (H, O) to Back Pieces (J, K); turn cams clockwise to secure.



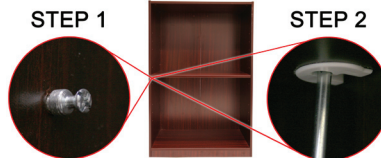
Step 6: Attach Sides (I, L) to Top, Bottom, and Back Pieces; turn cams clockwise to secure.



Step 7: Place Caps (G) over visible Cams.



Step 8: Thread Locking Support Pins (F) into place. Place Center Shelf (N) onto supports; turn lock with screwdriver to secure.



Step 9: Using Shelf Support Pins (E), position adjustable shelves (M) as desired.



IMPORTANT NOTICE:

- Place all wooden parts on a clean and smooth surface such as a rug or carpet to avoid the parts from being scratched.
- Check to be sure that you have all parts and hardware.
- Remove all wrapping materials, including staples & packing straps before you start to assemble.
- Do not tighten all screws/bolts until completely assembled.
- Keep all hardware parts out of reach of children.

Any problems or questions call Regency Office Furniture at 1-866-816-9822

