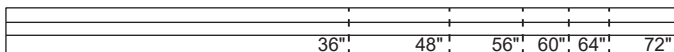


# Pre-hung French Door Installation Guide

In case of questions or missing parts, please contact us  
[aftersaledoor@outlook.com](mailto:aftersaledoor@outlook.com)

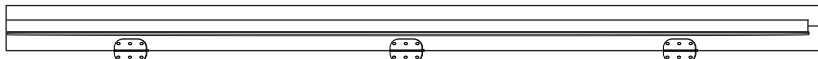
## What's included

(A) x1

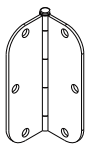
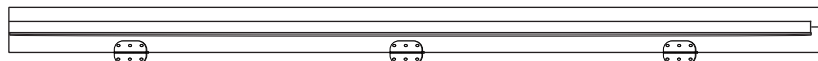


Trimmable for doors from 48"(double 24") to 72"(double 36")

(B) x1



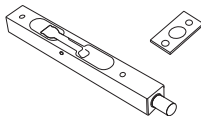
(C) x1



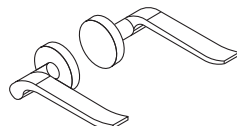
(D) x6



(E) x36



(F) x1



(G) x2

## Tools Required

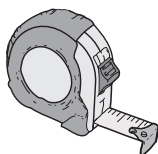
Speed Square



Phillips Screwdriver



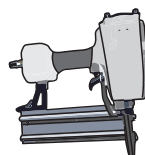
Tape Measure



Pencil

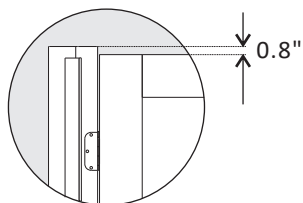
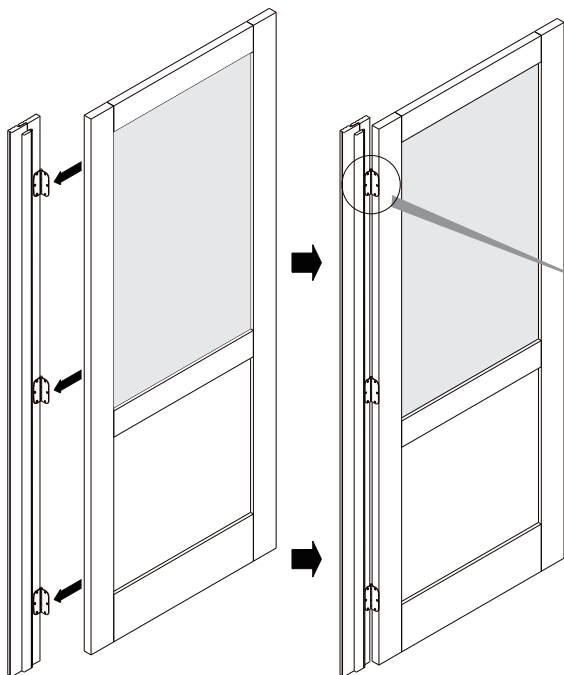


Nail Gun

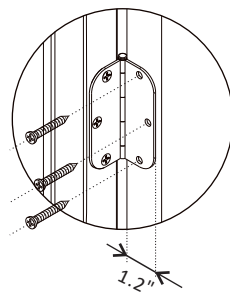


## Step ① Attach Door to Jamb

Start from Left Door. Need to Replicate Step 1 & 2 for Right Door



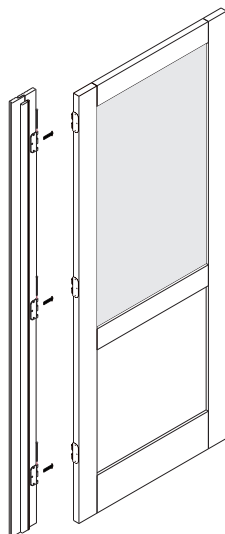
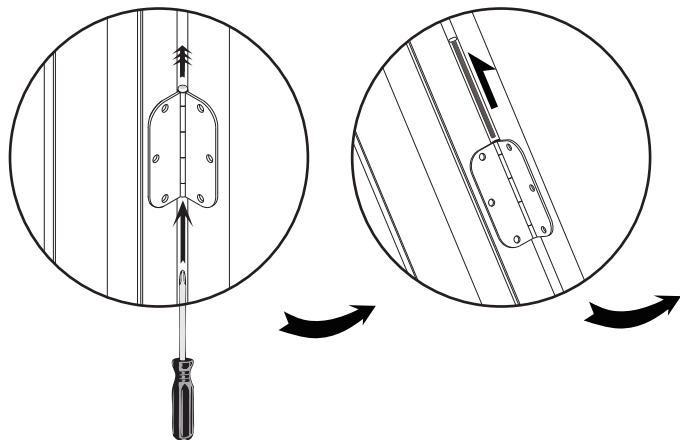
Pro tip: Leave a 0.8" space from the top of the jamb to the top of the door. This space is for the upper jamb.



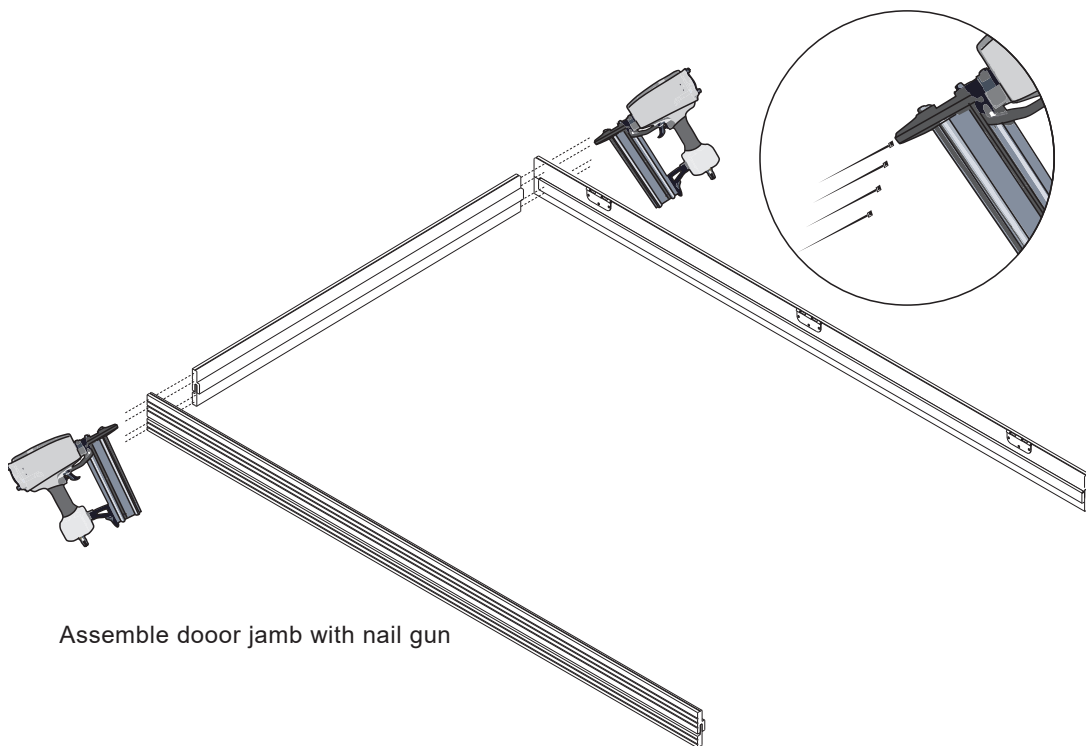
Pro tip: The edge of the hinge should be 1.2 inches from the edge of the door. This will leave enough room for the door to swing.

## Step ② De-attach Door and Jamb

Pro tip: A solid door is heavy, so we advise you to install the door jamb first and then attach the door for safety. It's easier to re-attach the door when half of the hinge has already been installed on the door.



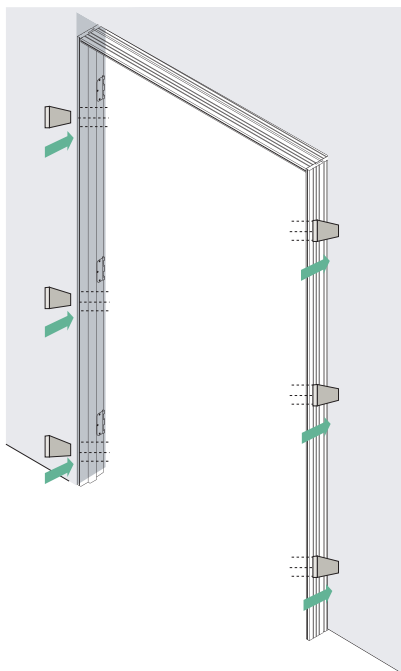
## Step ③ Assemble Jamb Kit



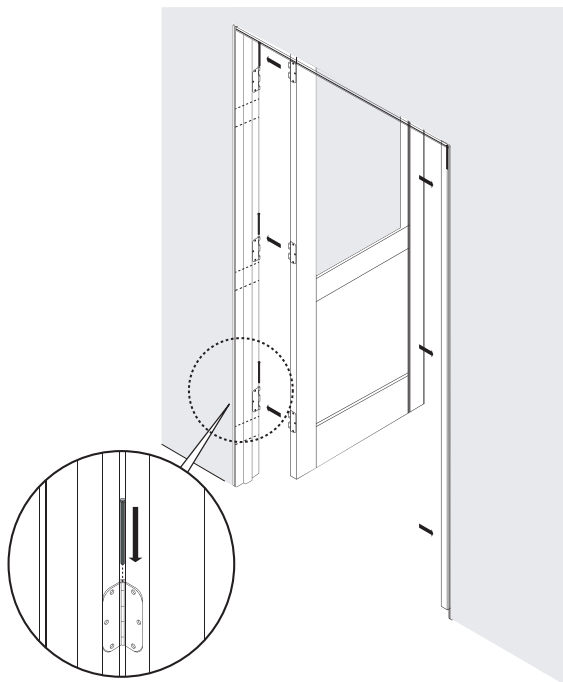
Assemble door jamb with nail gun

## Step ④ Install Jamb to the Opening, and Re-attach the Door

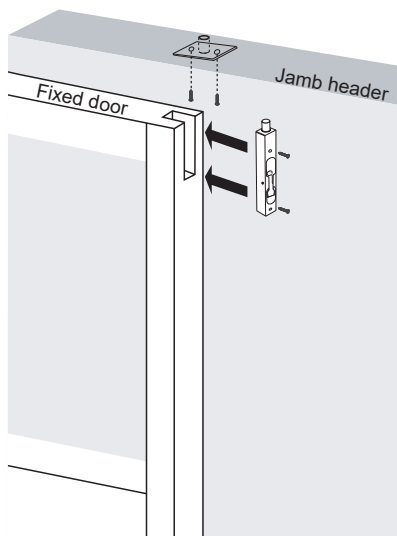
Step 1: Install the jamb



Step 2: Attach the doors



Step 3: Install the fixed door fixator



Step 4: Your French Door is ready

