



HARBOR BREEZE and logo design are trademarks or registered trademarks of LF, LLC. All rights reserved.

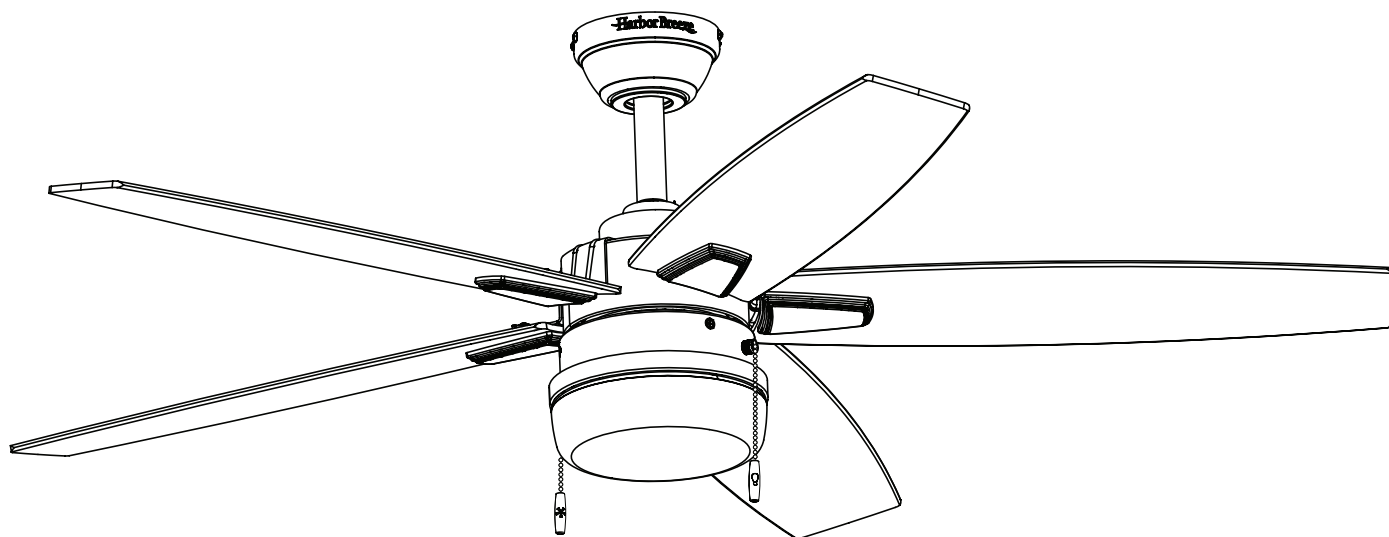
ITEM # 5127863/5127864

MODEL #42857/42858

WINDSHORE CEILING FAN

Español p. 18

ATTACH YOUR RECEIPT HERE



Purchase Date _____

Thank you for purchasing this HARBOR BREEZE product.
Questions, problems, or missing parts?
Before returning, contact us at:
888-251-1003, 8 a.m. - 8 p.m., EST, Monday - Sunday or at **ascs@lowes.com**.

TABLE OF CONTENTS

Package Contents 3

Hardware Contents 4

Safety Information 5

Preparation 6

Initial Installation 7

Standard or Angle Mounting Instructions. 9

Operating Instructions 13

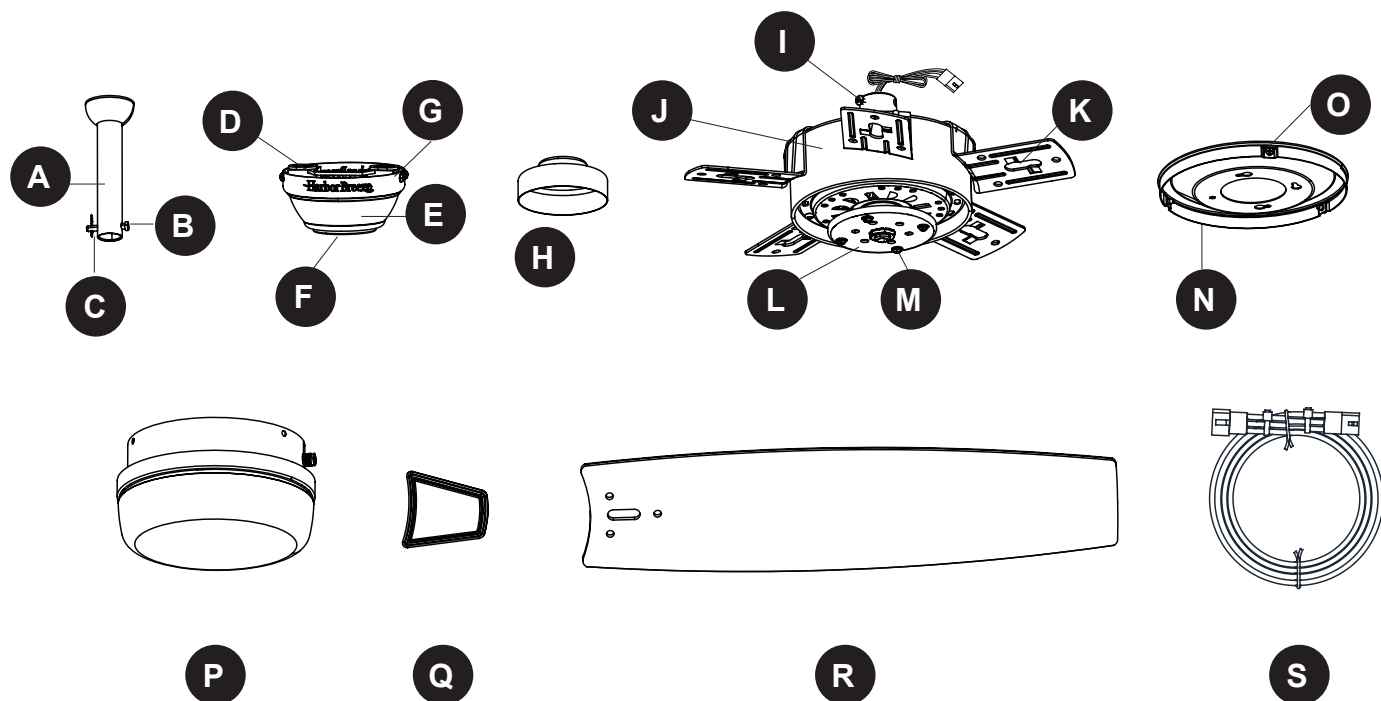
Care and Maintenance 14

Troubleshooting. 14

Limited Lifetime Warranty 16

Replacement Parts List 17

PACKAGE CONTENTS



PART	DESCRIPTION	QUANTITY
A	Downrod	1
B	Downrod Pin (preassembled to the Downrod [A])	1
C	Downrod Clip (preassembled to the Downrod [A])	1
D	Mounting Bracket (preassembled to Canopy [E])	1
E	Canopy	1
F	Canopy Cover (preassembled to Canopy [E])	1
G	Mounting Bracket Screw (preassembled to the Mounting Bracket [D])	4
H	Yoke Cover	1
I	Set Screw (preassembled to the Motor Assembly [J])	2
J	Motor Assembly	1
K	Blade Arm (preassembled to the Motor Assembly [J])	5
L	Fitter Plate (preassembled to the Motor Assembly [J])	1
M	Fitter Plate Screw (preassembled to Fitter Plate [L])	4
N	Light Pan	1
O	Light Pan Screw (preassembled to Light Pan [N])	3
P	Light Kit	1
Q	Medallion	5
R	Blade	5
S	36-Inch Lead Wire (optional)	1

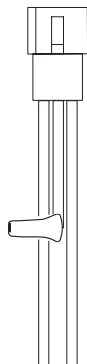
HARDWARE CONTENTS (shown actual size)

AA



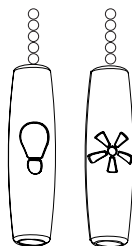
Wire Connector
Qty. 1
+ 1 extra

AI



Lead Wire
Qty. 1

DD



Pull Chain
Extension
Qty. 2

FF



Push-in
Connector
Qty. 2
+ 1 extra



SAFETY INFORMATION

Please read and understand this entire manual before attempting to assemble, operate or install the product.

- Before you begin installing the fan, disconnect the power by removing fuses or turning off the circuit breakers.
- Make sure all electrical connections comply with local codes, ordinances, the National Electrical Code and ANSI/NFPA 70-199. Hire a qualified electrician or consult a do-it-yourself wiring handbook if you are unfamiliar with installing electrical wiring.
- Make sure the installation site you choose allows a minimum clearance of 7 ft. from the blades to the floor and at least 30 in. from the end of the blades to any obstruction.
- The net weight of this fan is: 17.59 lb (7.98 kg).



DANGER: When using an existing outlet box, make sure the outlet box is securely attached to the building structure and can support the full weight of the fan. Failure to do this can result in serious injury or death. The stability of the outlet box is essential in minimizing wobble and noise in the fan after installation is complete.



WARNING: To avoid personal injury, the use of gloves may be necessary while handling fan parts with sharp edges.



WARNING: Using a full-range dimmer switch to control fan speed will cause a loud humming noise from the fan. To reduce the risk of fire or electric shock, do NOT use this fan with any solid-state speed control device.



WARNING: To reduce the risk of fire, electric shock or personal injury, mount the fan to an outlet box marked “ACCEPTABLE FOR FAN SUPPORT” and use the mounting screws provided with the outlet box. Most outlet boxes commonly used for the support of lighting fixtures are not acceptable for fan support and may need to be replaced. Consult a qualified electrician if in doubt. Secure the outlet box directly to the building structure. The outlet box and its support must be able to support the moving weight of the fan (at least 35 lbs.).



WARNING: To reduce the risk of fire, electric shock or personal injury, wire connectors provided with this fan are designed to accept only one 12-gauge house wire and two lead wires from the fan. If your house wire is larger than 12-gauge and/or there is more than one house wire to connect to the two fan lead wires, consult an electrician for the proper size wire connectors to use.



WARNING: To reduce the risk of fire, electric shock or personal injury, do not bend the blade arms when installing them, balancing the blades or cleaning the fan. Do not insert objects between the rotating fan blades.



WARNING: To reduce the risk of personal injury, use only parts provided with this fan. The use of parts OTHER than those provided with this fan will void the warranty.



SAFETY INFORMATION

CAUTION: Read all instructions and safety information before installing your new fan. Review the accompanying assembly diagrams.

CAUTION: Be sure the outlet box is properly grounded or that a ground (green or bare) wire is present.

CAUTION: Carefully check all screws, bolts and nuts on the fan motor assembly to ensure they are secured.

CAUTION: This device complies with part 15 of FCC Rules. Operation is subject to the following two conditions: 1) This device may cause harmful interference, and 2) this device must accept any interference received, including interference that may cause undesired operation.

CAUTION: This equipment has been tested and found to comply with the limits for a Class B digital device, pursuant to Part 15 of the FCC Rules. These limits are designed to provide reasonable protection against harmful interference in a residential installation. This equipment generates, uses and can radiate radio frequency energy and, if not installed and used in accordance with the instructions, may cause harmful interference to radio communications. However, there is no guarantee that interference will not occur in a particular installation. If this equipment does cause harmful interference to radio or television reception, which can be determined by turning the equipment off and on, the user is encouraged to try to correct the interference by one or more of the following measures:

--Reorient or relocate the receiving antenna.

--Increase the separation between the equipment and receiver

--Connect the equipment into an outlet on a circuit different from that to which the receiver is connected.

--Consult the dealer or an experienced radio/TV technician for help.

Please note changes or modifications not expressly approved by the party responsible for compliance could void the user's authority to operate the equipment.

HKC-US
3350 Players Club Parkway, Suite 225
Memphis, TN 38125
888-251-1003

PREPARATION

Before beginning the assembly of this product, ensure that all parts are present. Compare all parts with the package contents list and hardware contents list. If any part is missing or damaged, do not attempt to assemble the product.

Estimated Assembly Time: 60 minutes

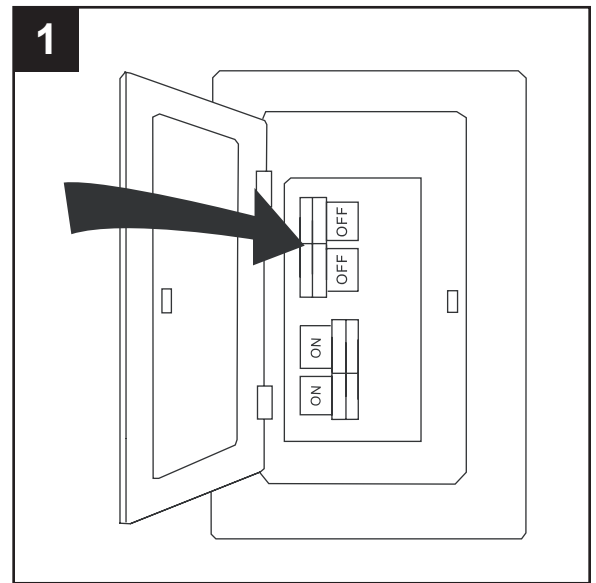
Tools Required for Assembly (not included): Electrical Tape, Phillips Screwdriver, Pliers, Safety Glasses, Step Ladder, Wire Cutters and Wire Strippers

Helpful Tools (not included): AC Tester Light, Tape Measure and Wiring Handbook

INITIAL INSTALLATION

1. Turn off the circuit breakers and the wall switch to the fan supply line leads.

⚠ DANGER: Failure to disconnect the power supply prior to installation may result in serious injury or death.



2. Determine the mounting method to use.

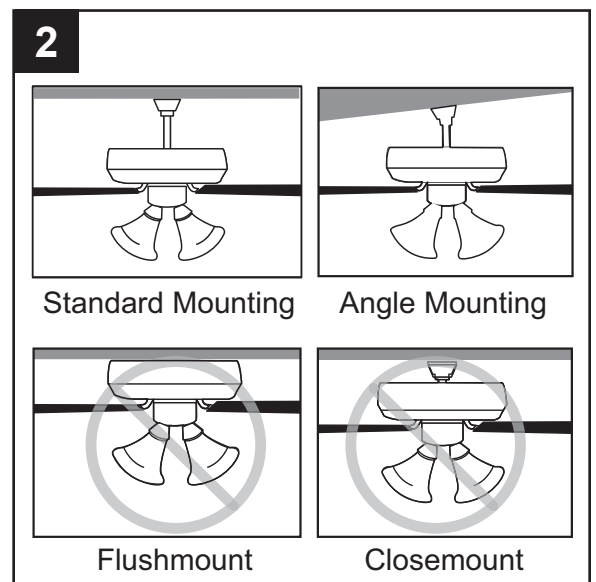
Standard Mounting is best suited for ceilings 8 ft. or higher. For taller ceilings you may want to use a longer downrod (not included).

Angle Mounting is best suited for angled or vaulted ceilings. A longer downrod is sometimes necessary to ensure proper blade clearance.

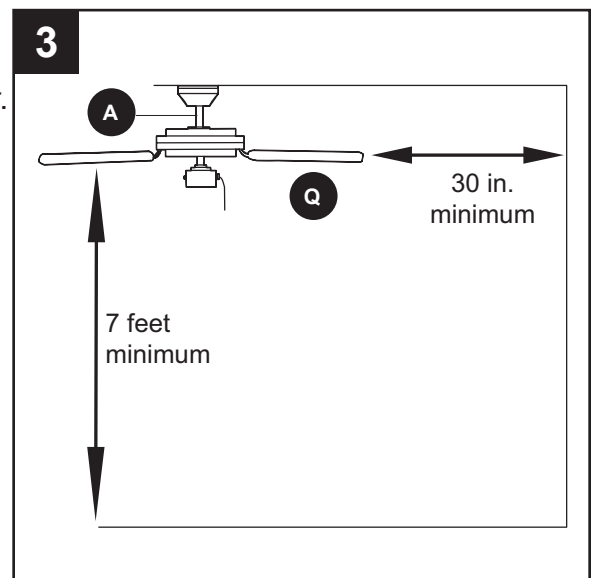
Important: If using the angle mount, check to ensure the ceiling angle is not steeper than 16°.

Flushmount is not available for this item.

Closemount is not available for this item.

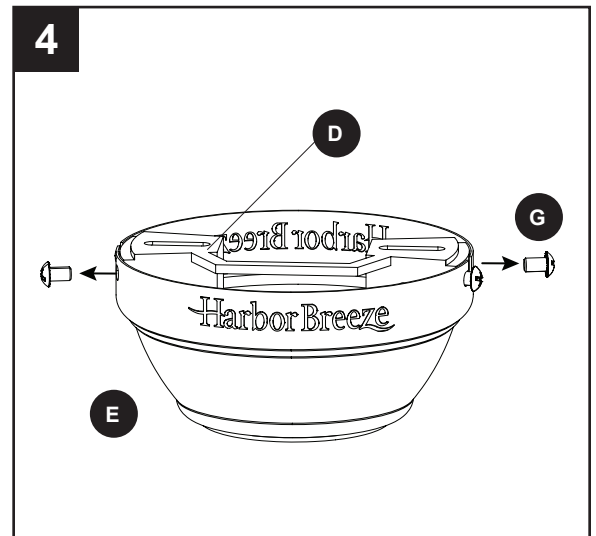


3. Ensure the blades (Q) will be at least 30 in. from any obstructions. Also check the downrod (A) length to ensure the blades (Q) will be at least 7 ft. above the floor.



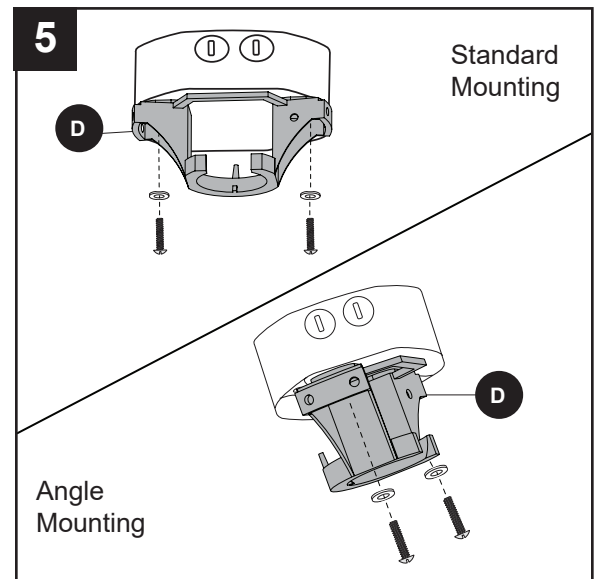
INITIAL INSTALLATION

- Loosen all four preassembled mounting bracket screws (G), then completely remove the two mounting bracket screws (G) from the round holes of canopy (E). Set aside for later use. Turn the canopy in a counterclockwise direction. Detach mounting bracket (D) from canopy (E).

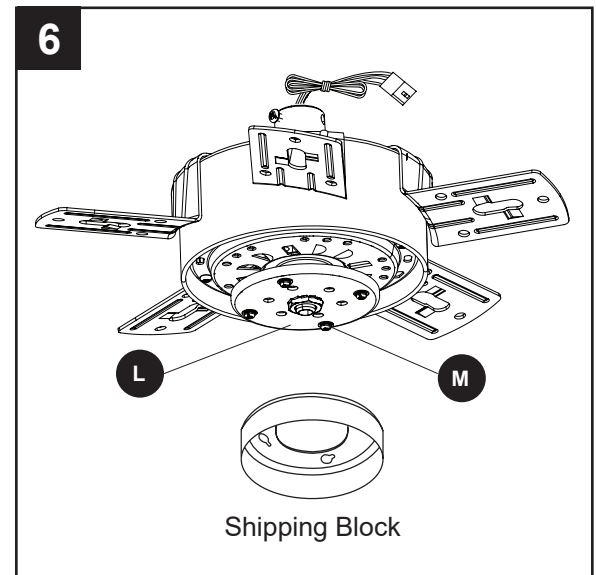


- Attach mounting bracket (D) to outlet box (not included) using screws and washers provided with the outlet box.

CAUTION: It is very important to use the proper hardware when installing the mounting bracket (D) as this will support the fan.

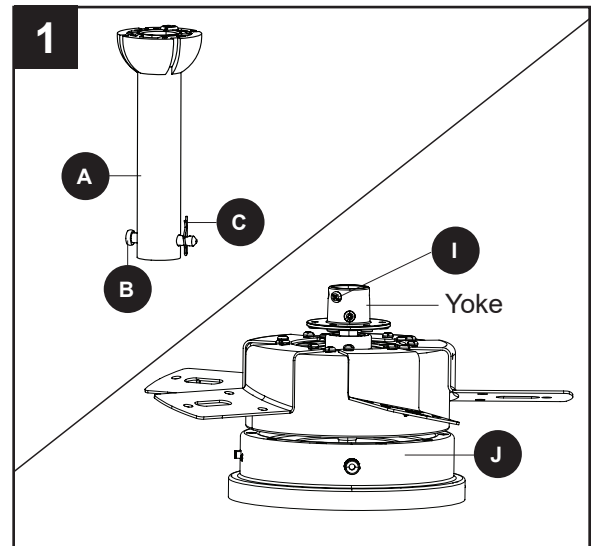


- Loosen the four fitter plate screws (M) preassembled to the fitter plate (L). Then, turn the orange shipping block counterclockwise and remove. Discard the shipping block.

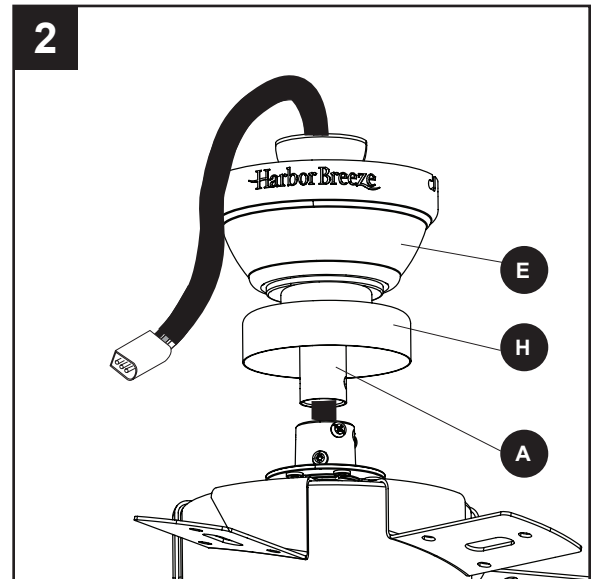


STANDARD OR ANGLE MOUNTING INSTRUCTIONS

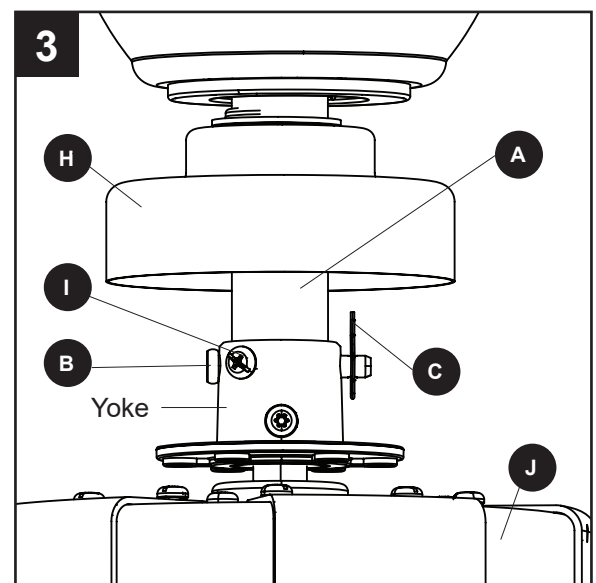
1. Remove the downrod clip (C) and downrod pin (B) from the downrod (A). Then partially loosen the set screws (I) in the yoke at the top of the motor assembly (J).



2. Insert the downrod (A) -- or a longer downrod (not included), if required -- through the canopy (E) and yoke cover (H). Feed the wires from the fan through the downrod (A).

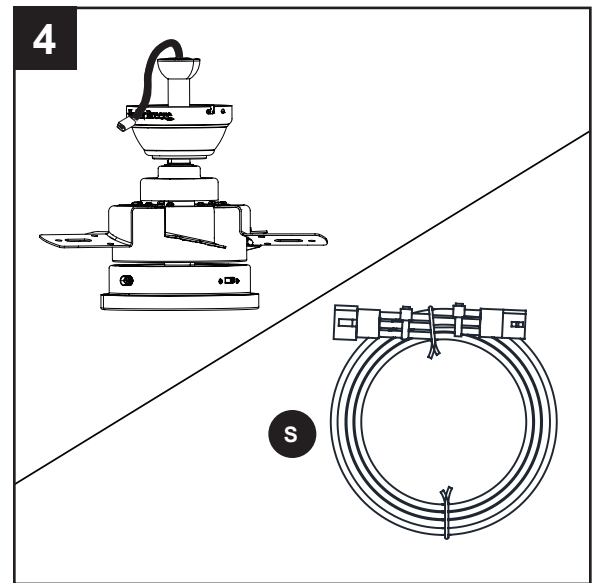


3. Slide the downrod (A) into the yoke, align the holes, then re-install the downrod pin (B) and downrod clip (C). Secure with set screws (I) and slide the yoke cover (H) down until it rests on top of the motor assembly (J).



STANDARD OR ANGLE MOUNTING INSTRUCTIONS

4. Depending on the length of downrod (A) you use, you may need to use the 36-inch lead wire (S) to accommodate a 36 or 48-inch downrod (sold separately). When necessary, connect the 3-pin connector extending from the center of the downrod (A) to one end of the 36-inch lead wire (S). **Note:** The downrod (A) included with this fan will not utilize the 36-inch lead wire (S).



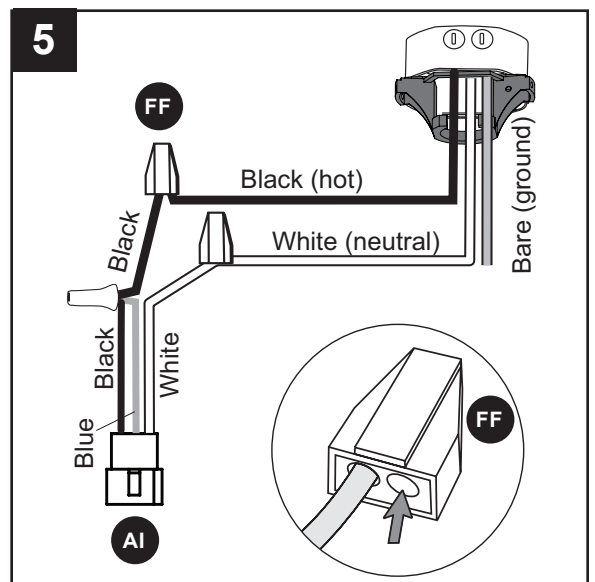
5. Make the following wire connections according to the diagram and these steps:
- Push the White (neutral) supply wire and the white wire from lead wire (AI) into the the holes of one push-in connector (FF).
 - Push the Black (hot) supply wire and the black wire from lead wire (AI) into the the holes of one push-in connector (FF).

Aditamentos utilizados

FF Push-in Connector		x 2
AI Lead Wire		x 1

Note: The lead wire (AI) and ground wire will be connected later.

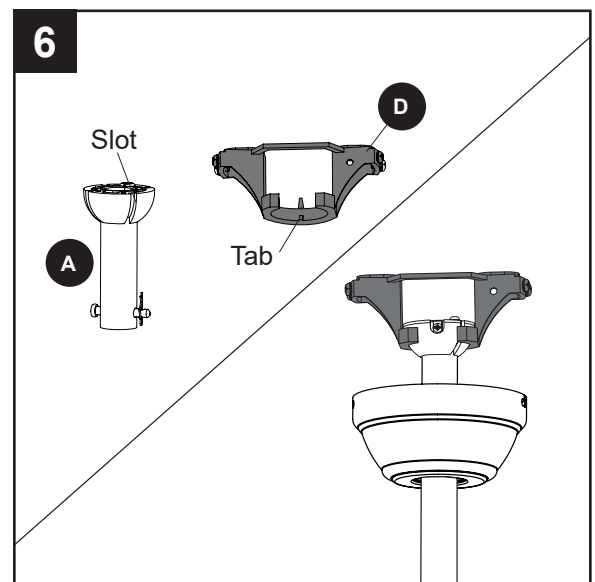
Important: If household supply wires are different colors than referred to above, a professional electrician should determine proper wiring.



6. Install the ball end of the downrod (A) into the opening of the mounting bracket (D). Align a slot in the ball with the tab in the mounting bracket (D).

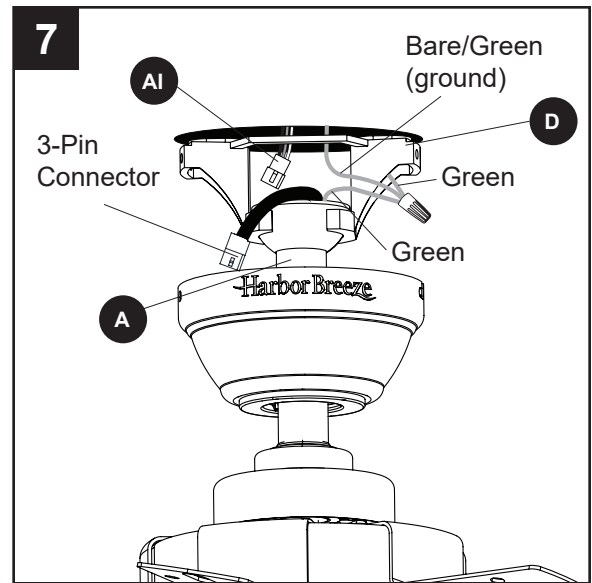
Important: The downrod (A) should not rotate in the mounting bracket (D) if installed properly.

⚠ DANGER: Failure to align a slot in the ball with the tab may cause the fan to wobble or fall, which could result in serious injury or death.

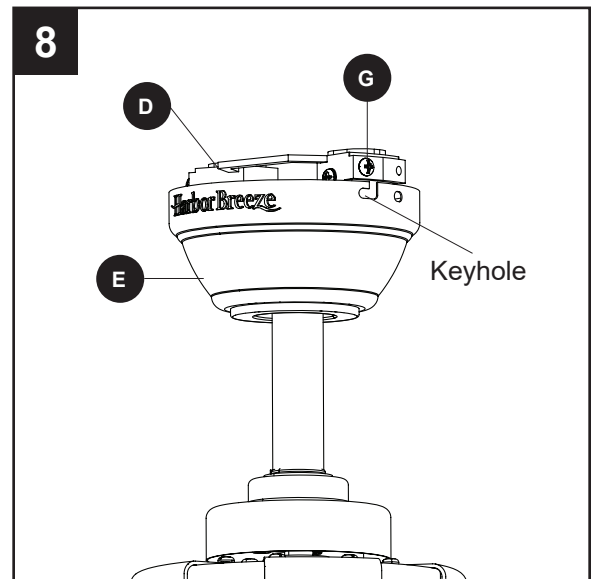


STANDARD OR ANGLE MOUNTING INSTRUCTIONS

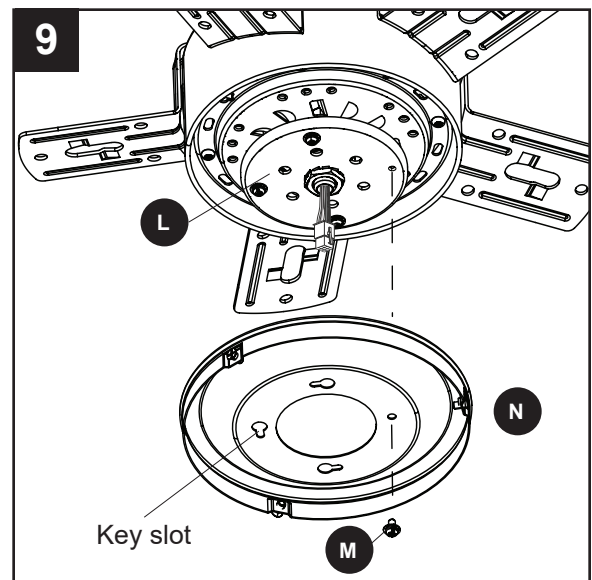
7. Connect the 3-pin connector extending from the downrod (A) to the 3-pin connector on lead wire (AI). Then, connect the green/bare (ground) supply wire to the green wires from the downrod (A) and the mounting bracket (D).



8. Align the canopy (E) over the loose mounting bracket screws (G) preassembled on mounting bracket (D). Place the keyholes of the canopy (E) onto the mounting bracket screws (G) and rotate the canopy (E) clockwise. Secure the canopy (E) with the mounting bracket screws (G) previously removed (Step 4, page 8). Tighten all mounting bracket screws (G) securely.

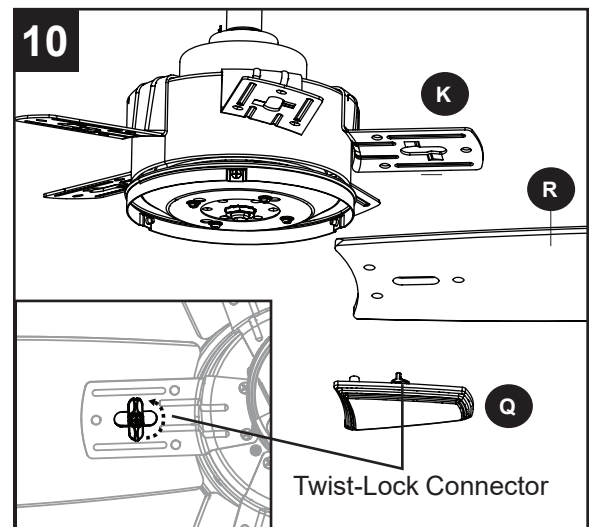


9. Remove one fitter plate screws (M) from fitter plate (L). Feed the 9-pin connector through center hole in light pan (N). Align the three key slots in the light pan (N) with the loosened fitter plate screws (M). Place the light pan (N) over the three screws and turn the light pan (N) clockwise. Then tighten the three fitter plate screws (M). Re-install the previously removed fitter plate screw (M) and tighten firmly.

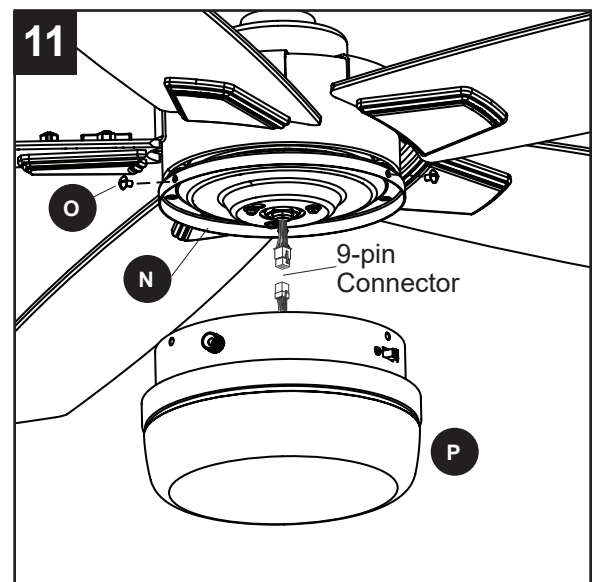


STANDARD OR ANGLE MOUNTING INSTRUCTIONS

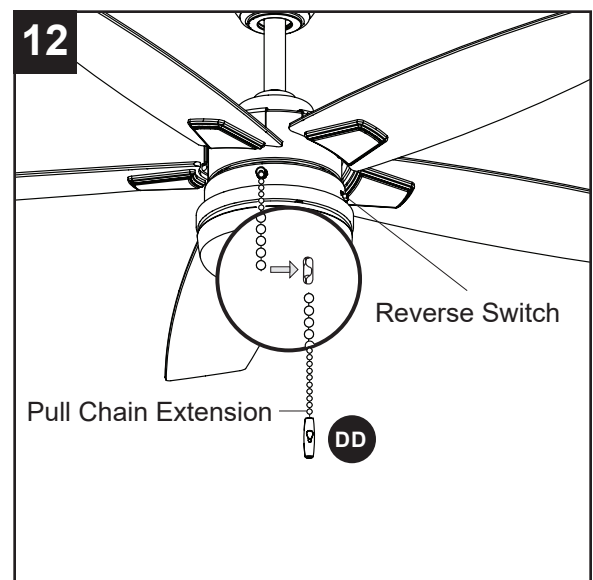
10. Align the twist-lock connector of the medallion (Q) in the direction of its corresponding slot in the blade (R). Place the blade (R) over the twist-lock connector. Then lift medallion (Q) and blade (R) until flush with the underside of blade arm (K). Rotate the twist-lock connector so it is perpendicular to the hole in the blade arm (K) to secure. Repeat for the remaining blades (R).



11. Remove the three light pan screws (O) preassembled to the light pan (N). Then, connect the 9-pin connector from fan to the 9-pin connector from the light kit (P). Secure the light kit (P) with the previously removed light pan screws (O).



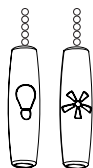
12. Attach the pull chain extensions (DD) or custom pull chain extensions (not included) to the fan and light pull chains (if applicable). **Note:** When facing the reverse switch, the light pull chain is on the left and the fan pull chain is on the right.



Hardware Used



Pull Chain
Extension



x 2

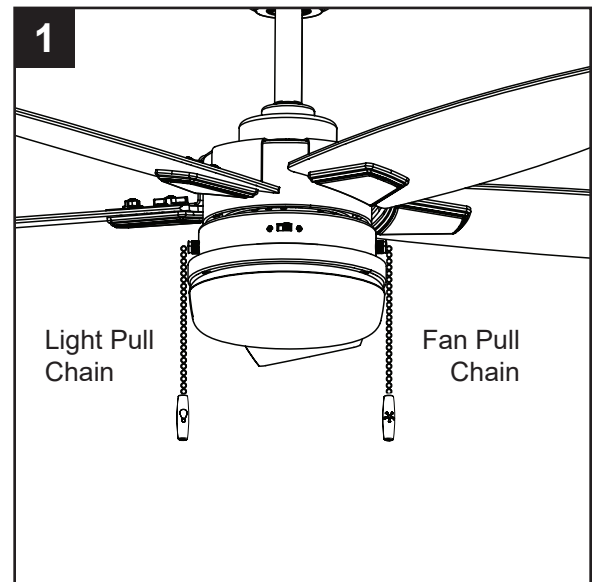
Turn on power supply to the fan.

Assembly is complete.

OPERATING INSTRUCTIONS

1. The fan pull chain has four positions to control fan speed. One pull is HIGH, two is MEDIUM, three is LOW and four turns the fan OFF.

The light pull chain has two positions to control the light, ON and OFF.



2. Use the fan reverse switch to optimize your fan for seasonal performance.

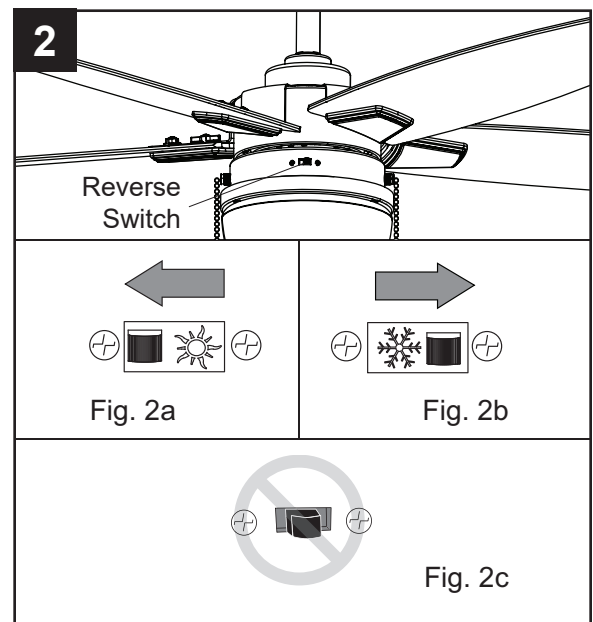
Using a ceiling fan will allow you to raise your thermostat setting in summer and lower your thermostat setting in winter without feeling a difference in your comfort.

Note: Wait for the fan to stop before moving the reverse switch.

2a. **In warmer weather**, push the reverse switch left to display a sun icon, which will result in downward airflow creating a wind chill effect.

2b. **In cooler weather**, push the reverse switch right to display a snowflake icon, which will result in upward airflow that can help move stagnant, hot air off the ceiling area.

Important: The reverse switch must be set either completely left or right in order for the fan to function correctly. If the reverse switch is set in the middle position, the fan will not operate (Fig. 2c).



CARE AND MAINTENANCE

At least twice each year, lower the canopy to check the downrod assembly, and then tighten all screws on the fan. Clean the motor housing with only a soft brush or lint-free cloth to avoid scratching the finish. Clean the blades with a lint-free cloth.

Total fixture wattage is 21 watts; do not attempt to replace LED.

Important: Shut off the main power supply before you begin any maintenance tasks. Do not use water or a damp cloth to clean the ceiling fan.

TROUBLESHOOTING

PROBLEM	POSSIBLE CAUSE	CORRECTIVE ACTION
The fan does not move.	<ol style="list-style-type: none">1. The power is off, or the fuse is blown.2. There is a faulty wire connection.3. The plugs are not connected properly.4. The reverse switch is not completely engaged.	<ol style="list-style-type: none">1. Turn the power on or check the fuse.2. Turn the power off. Loosen the canopy and check all connections.3. Check that the connectors from the light kit fitter and fan are connected properly.4. Push the reverse switch completely to the left or right.
The fan is noisy.	<ol style="list-style-type: none">1. The blades are loose.2. There is a cracked blade.3. The wall control is not compatible with the fan.4. The outlet box is not secure.5. The mounting bracket is not secure.	<ol style="list-style-type: none">1. Check and tighten all screws that hold the fan blades to the blade arms and the motor.2. Replace the cracked blade.3. Do not use a full range dimmer switch to control the fan speed.4. Ensure the outlet box is secured to the building structure.5. Ensure the mounting bracket is secured to the outlet box and that the screws are tight.

TROUBLESHOOTING

PROBLEM	POSSIBLE CAUSE	CORRECTIVE ACTION
There is excessive wobbling.	<ol style="list-style-type: none"> 1. The blades and/or blade arms are loose. 2. The blades are unbalanced. 3. The fan mounting is not secure. 4. The fan is too close to the vaulted ceiling. 5. The set screw on the motor housing yoke is loose. 	<ol style="list-style-type: none"> 1. Check and tighten all screws that hold the fan blades to the blade arms and the blade arms to the motor. 2. Switch one blade with a blade from the opposite side. Or balance the fan using a blade balancing kit (sold separately). 3. Turn off the power. Loosen the canopy and verify that the mounting bracket is secure to the electrical outlet box. The bracket must be flush without movement against the outlet box. 4. Use a longer downrod (sold separately) or move the fan to another location. 5. Lift up the yoke cover and tighten the set screw to the yoke until secure.
The fan operates correctly, but the lights are not working.	<ol style="list-style-type: none"> 1. The light kit wire plugs are not connected properly. 2. There is a faulty wire connection. 	<ol style="list-style-type: none"> 1. Ensure that the single-pin connectors from the light kit are connected properly. 2. Turn the power off and check all connections at the ceiling outlet box.

LIMITED LIFETIME WARRANTY

Set forth below, the manufacturer warrants the fan motor for this ceiling fan to be free from defects in workmanship and material for the life of the product. Also, subject to the limitations below, the manufacturer warrants all ceiling fan parts ("ceiling fan parts" excludes the motor and parts made in whole or in part with glass) to be free from defects in workmanship and material for a period of one year after the date of purchase by the original purchaser at retail.

All claims must be made by the original purchaser from an authorized dealer, whether such purchaser purchased the product through a store or contractor. Ceiling fan part defects must be reported within the first year from the date of purchase. Parts made in whole or in part with glass and the finishes of metal and other surfaces are not warranted.

Purchasers are responsible for all costs of removing and reinstalling the product. Any damage to any part caused by ordinary wear and tear, accident, misuse, or improper installation, is not covered by this warranty. The manufacturer assumes no responsibility whatsoever for fan installation. Any service performed by a non-licensed electrician will render the warranty invalid.

The manufacturer's sole responsibility shall be to repair or replace the motor, parts, or product within the terms stated above. The manufacturer shall not be liable for any loss or damage of any kind, including any incidental or consequential damages resulting directly or indirectly, from any breach of warranty, express or implied, or any other failure of this product. Some states do not allow the exclusion or limitation of incidental or consequential damages so this limitation may not apply to you.

If the original purchaser ceases to own the fan, this warranty is voided.

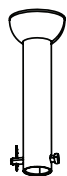
Should the purchaser encounter a problem with your fan related to defects in workmanship or materials within the warranty period associated with the defective part, the manufacturer agrees to replace the defective part without charge, or at its option, to replace the ceiling fan with a comparable or superior model.

The manufacturer's warranties are limited to the written warranties set out in this ceiling fan limited lifetime warranty. All other express and implied warranties, including, without limitation, the implied warranty of fitness for a particular purpose and the implied warranty of merchantability is disclaimed. Some states do not allow the disclaimer of implied warranties, so this disclaimer may not apply to you.

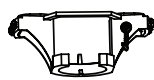
REPLACEMENT PARTS LIST

For replacement parts, call the customer service department at **888-251-1003**, 8 a.m. - 8 p.m., EST, Monday - Sunday. You could also contact us at **ascs@lowes.com**.

PART	DESCRIPTION	#5127863	#5127864	COVERED UNDER WARRANTY
A	Downrod	4L000007500	4L000013820	YES - 1 year
D	Mounting Bracket	4L000006410	4L000006350	YES - 1 year
E	Canopy	4L000007830	4L000016380	YES - 1 year
F	Canopy Cover	4L000002900	4L000002190	YES - 1 year
H	Yoke Cover	4L000016330	4L000016390	YES - 1 year
K	Blade Arm (x5)	4L074670001	4L074670002	YES - 1 year
P	Light Kit	4L000016340	4L000016350	YES - 1 year
Q	Medallion (x5)	4L074680001	4L074680002	YES - 1 year
R	Blade (x5)	4L086330001	4L086330002	YES - 1 year
HW	Hardware Kit	4L000016360	4L000016370	NO



A



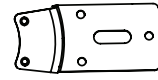
D



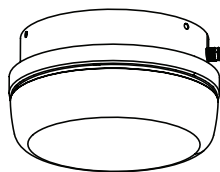
F



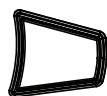
H



K



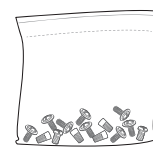
P



Q



R



HW