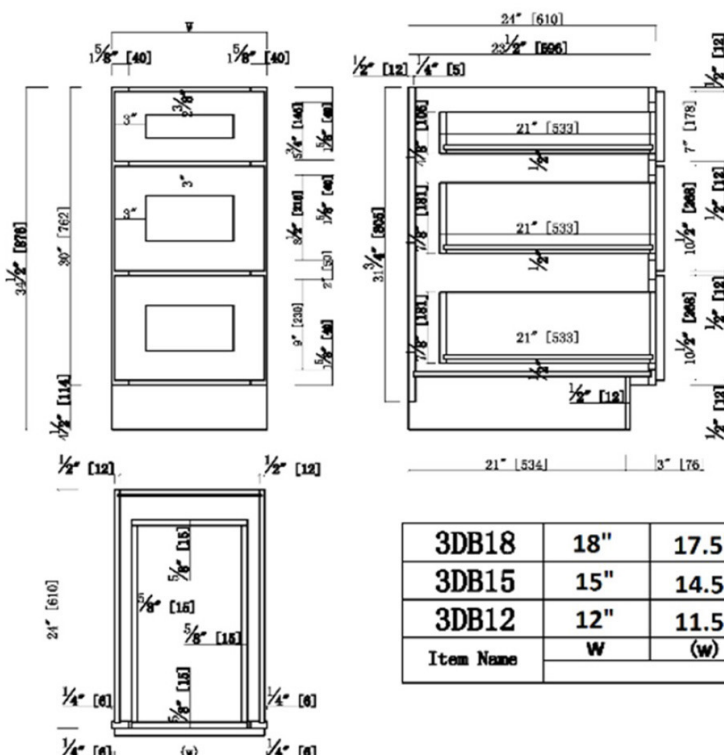


Brookings Unassembled Shaker Drawer Base Kitchen Cabinet 18x34.5x24 Espresso



3DB18	18"	17.5"
3DB15	15"	14.5"
3DB12	12"	11.5"
Item Name	W	(W)

SPECIFICATIONS

MATERIAL CONSTRUCTION:	Wood
WOOD SPECIES:	Maple
ASSEMBLED DIMENSIONS:	34.5" H x 18" L x 24" D
ASSEMBLED WEIGHT:	50.88 lbs.
KITCHEN CABINET TYPE:	Drawer Base
MOUNTING TYPE:	Floor Mount
CONSTRUCTION TYPE:	Face Frame
HINGE STYLE:	N/A
DOOR STYLE:	N/A

DRAWER DIMENSIONS 1:	4.17" H x 21" L x 14.44" D
DRAWER DIMENSIONS 2:	7.12" H x 21" L x 14.44" D
DRAWER DIMENSIONS 3:	7.12" H x 21" L x 14.44" D
DWR BOX MATERIAL:	SOLID WOOD
DWR CONSTRUCTION:	Dove Tail
DWR GLIDE:	Dove Tail
FAKE DWR QTY:	0
FAKE DWR LOCATION:	N/A

WARRANTY:	1-Year limited warranty
LEGAL FOR SALE IN CALIFORNIA:	Yes
CARB COMPLIANT:	CARB Phase 2
TSCA TITLE IV COMPLIANT:	Yes

NUMBER OF SHELVES:	0
SHELF STYLE:	N/A
ADJUSTABLE SHELVES:	N/A
SHELF ADJUSTIBILITY INCREMENTS:	N/A
SHELF DIMENSIONS:	N/A
SHELF THICKNESS:	N/A
SHELF MATERIAL:	N/A
FACE FRAME MATERIAL:	Solid Maple
SIDES MATERIAL:	Plywood
BOTTOM MATERIAL:	Plywood
BACK PANEL MATERIAL:	Plywood
BACK BRACE MATERIAL:	Wood
TOE KICK INSET WIDTH:	3"
TOOLS NEEDED FOR INSTALLATION:	Phillips Screwdriver Mallet Wood Glue Wood Screw
FASTENER TYPE:	Wood Screw



TYPE:
JOB:
ORDER CODE:
APPROVALS: