



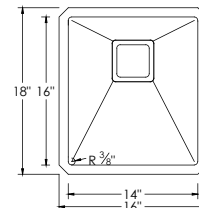
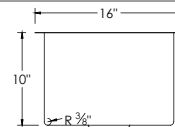
**KUBO**  
**S-509XG**

STAINLESS STEEL  
HANDMADE SINGLE BOWL BAR SINK

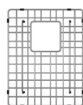


#### DIMENSIONS

16" x 18" x 10"



#### INCLUDED ACCESSORIES



G-509  
GRID



ST-04  
STRAINER

#### RECOMMENDED ACCESSORIES



A-02  
COLANDER



A-900DG  
DRYING RACK



A-905  
COLANDER



A-904  
CUTTING BOARD



A-910  
SERVING BOARD



A-913  
CUTTING BOARD



S-01S  
SOAP DISPENSER

#### SURFACE FINISH

BRUSHED  
SATIN FINISH

#### DRAIN HOLE SIZE



#### CORNER PROFILE



RADIUS 10mm

#### INSULATION

COATED +  
RUBBER PADS

#### BOWL DEPTH



10"  
SINGLE  
BOWL

#### INSTALLATION OPTIONS



UNDERMOUNT

#### MATERIAL

Premium 16 gauge stainless steel with 18/10 chrome-nickel content. The 18% of chrome content provides durability, maximum protection against rust and a beautiful satin finish. The 10% of nickel content provides excellent strength and hardness.

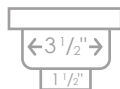


16 GAUGE  
STAINLESS STEEL

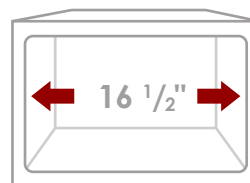
#### PRODUCT DIMENSIONS

Overall Dimensions	16" x 18" x 10"
Internal Dimensions	14" x 16" x 10"
Left Basin	-
Right Basin	-
Drain Opening Size	3 1/2"

#### SQUARE STRAINER



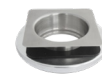
#### CABINET SIZE



MINIMUM  
INTERNAL SIZE

#### GARBAGE DISPOSAL ADAPTOR

For Stylish® sinks with square strainers, an extra kit (DA-01) is required in order to convert the square hole into round and to be able to install a garbage disposal unit.



DA-01  
GARGABE DISPOSAL ADAPTOR

#### WARRANTY

This product is covered by a limited lifetime warranty.  
Consult our website for complete details.

#### PRODUCT CARE

Rinse and dry your sink with a clean soft cloth, working with, not a cross, the grain. We recommend the use of a mild solution of water and vinegar to remove any mineral deposits that may have built up on your sink.

Use mild non-abrasive liquid cream cleaners that do not contain chlorine, sodium hypochlorite or hydrochloric acid to help maintain the original appearance of your sink. Ensure that you thoroughly rinse your sink and wipe it dry. We recommend the use of a stainless steel grid that fits inside the bottom of the sink bowl and protect the sink from scratches.



#### STANDARDS COMPLIANCE

cUPC certified  
ISO 9001 certified

Stylish International Inc.

[www.stylishkb.com](http://www.stylishkb.com)

[stylish.international.inc](mailto:stylish.international.inc)

[care@stylishkb.com](mailto:care@stylishkb.com)

+1-855-789-5352

Products and specifications shown are subject to change without notice. Please contact our technical support at [care@stylishkb.com](mailto:care@stylishkb.com) for any further queries, replacement parts requests, etc. ©2021 Stylish® all right reserved.