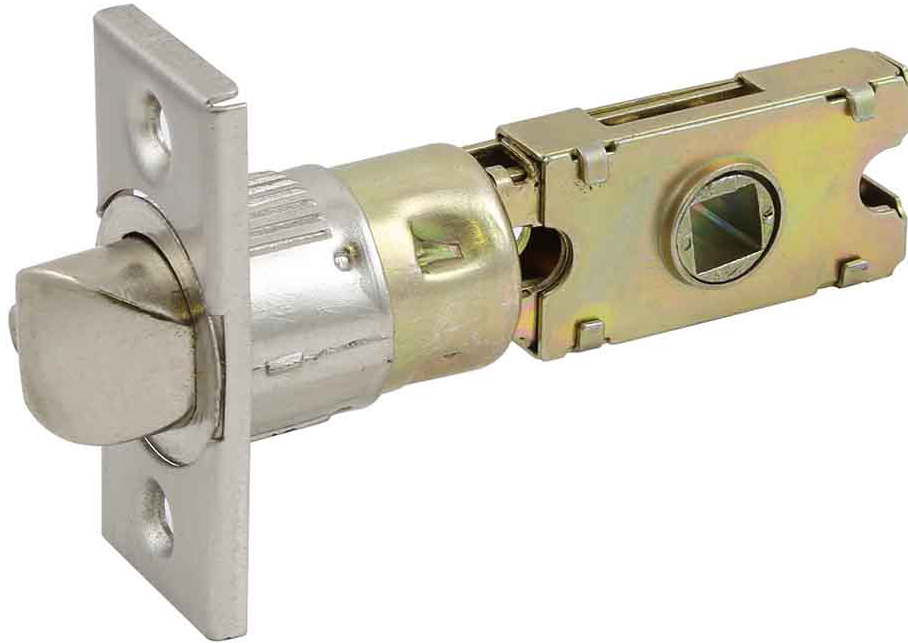


## 6-Way Square Spindle Entry Latch Satin Nickel



### SPECIFICATIONS

<b>MATERIAL CONSTRUCTION:</b>	Zinc	<b>REMOVABLE CORE:</b>	No
<b>LOCK FUNCTION:</b>	Latch	<b>LATCH FACEPLATE I:</b>	Universal (Drive In)
<b>DEADBOLT FUNCTION:</b>	N/A	<b>LATCH BACKSET:</b>	Adj; 2-3/8" - 2-3/4"
<b>EXTERIOR MAX PROJECTION:</b>	0	<b>LATCH TYPE:</b>	6 Way / Universal / Drive-in (drive in + 2 faceplates)
<b>INTERIOR MAX PROJECTION:</b>	0	<b>LATCHBOLT THROW DISTANCE:</b>	0.5"
<b>ASSEMBLED WEIGHT:</b>	0.25 lbs.	<b>SPINDLE TYPE:</b>	Square
<b>ASSEMBLED HEIGHT:</b>	2.25"	<b>MOUNTING HARDWARE INCLUDED:</b>	Yes
<b>ASSEMBLED LENGTH:</b>	2.75"	<b>TOOLS NEEDED FOR INSTALLATION:</b>	Phillips Screwdriver
<b>ASSEMBLED WIDTH/DEPTH:</b>	1"		
<b>CROSS BORE:</b>	2.13"		
<b>EDGE BORE:</b>	1"		
<b>HANDING:</b>	Reversible		

<b>WARRANTY:</b>	5-Year limited warranty
<b>ANSI CERTIFICATION:</b>	Grade 3
<b>BHMA GRADE:</b>	3
<b>FIRE RATED:</b>	No
<b>ADA COMPLIANT:</b>	No



TYPE:
JOB:
ORDER CODE:
APPROVALS: