

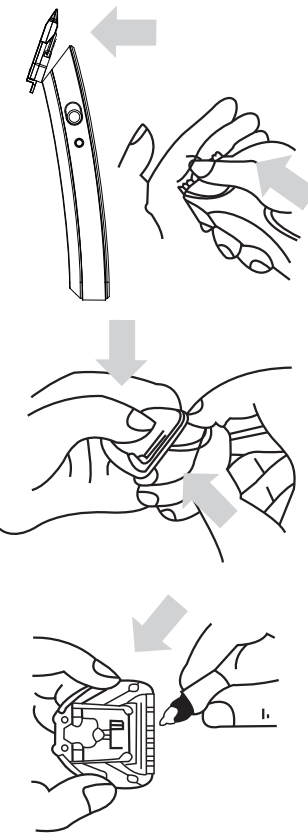
BLADE CARE

RECHARGING

WARNING

pure
enrichment

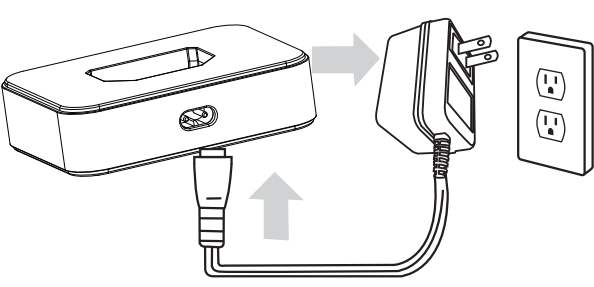
TRYM II



1. Hold the trimmer with the obverse side facing downwards and push the blade away from the Housing.

2. Press the swing knot to spread the blades detached apart for cleaning.

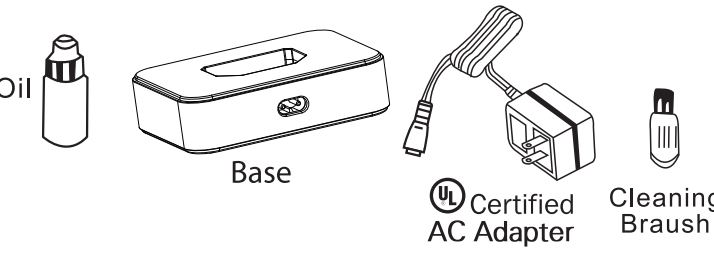
3. Add to the blades with one of two drops of oil.



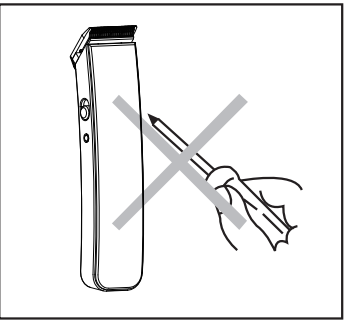
1. Turn switch off.
2. Plug the adaptor into clipper, and then into a household wall socket.
3. The charging indicator will light up while charging.

4. Do not charge the clipper for over 8 hours, as over-charging may shorten the battery life.
5. To maximize battery life, fully discharge then re-charge the trimmer twice a year.

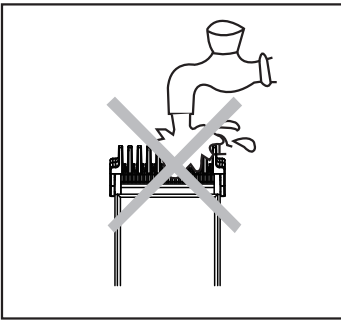
ACCESSORIES



- Do not disassemble the unit as that may cause damage.
- Do not clean the body with water, clean it with a dry cloth.



- Don't use volatile chemicals to clean the shaver. Use only mild detergents



- Do not attempt to recharge unit in temperature below 32°F or above 105°F as it will not recharge efficiently.



- 8-hour charging
- Charge indicator
- Special compound metal blades for excellent cutting
- 110 Volts (North America Model)



PureEnrichment.com

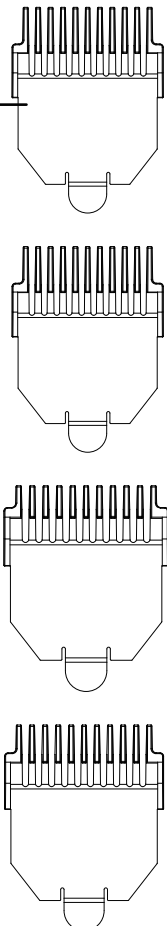
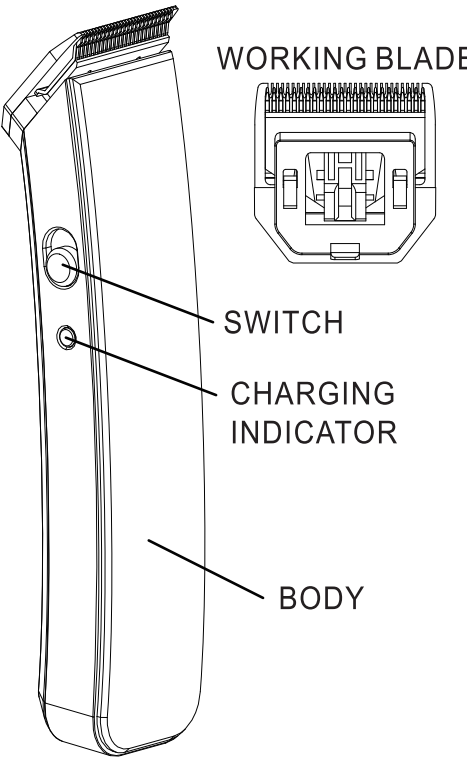
NAMES & USE OF PARTS

HOW TO USE

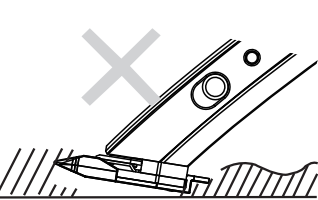
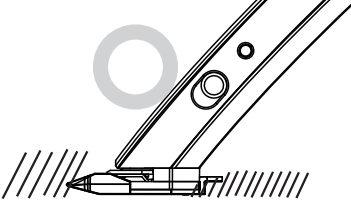
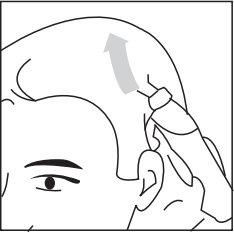
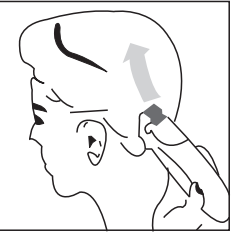
CLIPPING SHORT HAIR

TRIMMING

TRIMMING ATTACHMENTS



- Ensure that your clipper is clean and lubricated. Let the person whose hair you are going to cut sit so that the top of his/her head is at eye level. Wrap a towel around his/her neck.
- Before you start cutting comb the hair well. Ensure that it is untangled.
- The best results will be achieved if the clipper is used on dry hair.



- For extremely close clipping, the clippers can be run through the hair using one of the double-sided length comb attachment.
- It is usually best to begin from the neck and run towards the top of the head. Next cut the front and the top of the head, and then sides of head.
- Always begin with the longest guide attachment (9mm). Once you have trimmer your hair from all angles, use the shorter guides attachment to style the final cut.
- Hold the clipper so that the flat side of the comb attachment is directed towards the head. Hair should be cut against the direction it is growing. This assures all hairs will be clipped evenly.
- When running the unit through thick or long areas of hair. It is necessary to move the clipper slowly and often away from the head, cutting small amounts of hair at a time.

- Use the clipper without a comb attachment and hold the clipper in reversed position to neatly trim side burns and uneven hair at the hairline.
- For cutting the hair close to the ears, put one corner of the cutting unit onto the hair, pay particular attention to make sure that the teeth of cutting unit are at a safe distance from the ears.
- Use the clipper with one of the comb attachments to trim beard and mustache hair. It is usually best to begin with the longest attachment (9mm) and lower until you have established the length you prefer.

