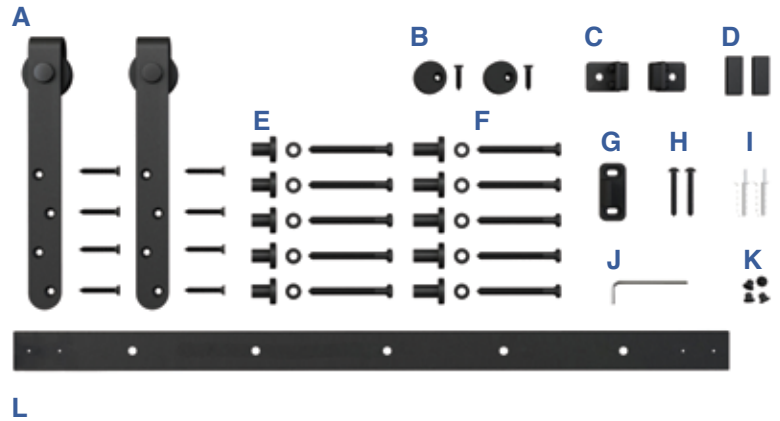


# FURNITURE

## SLIDING DOOR HARDWARE

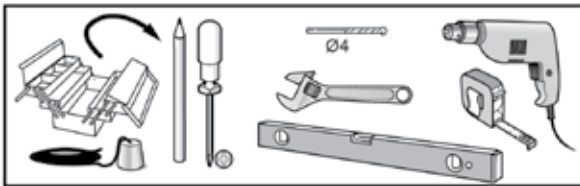
MODEL No. FSDH-STRAPKIT-\*6

## INSTALLATION MANUAL



### TOOLS REQUIRED

### INCLUDED IN KIT



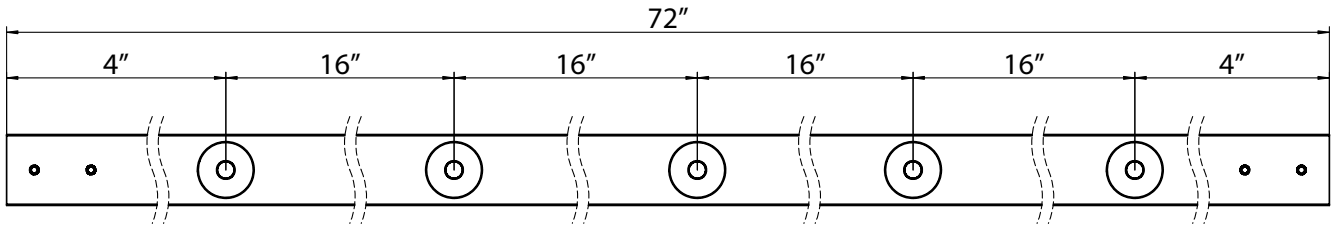
- Plumb Line
- Pencil
- Phillips Head Screwdriver
- 4mm Drill Bit
- Wrench
- Level
- Power Drill
- Tape Measure

<b>A</b>	Door Roller Hardware	x2
<b>B</b>	Anti-Jump Disk	x2
<b>C</b>	Door Stop Hardware	x2
<b>D</b>	End Cap	x2
<b>E</b>	Mounting Bracket for 3/4" and 1" Doors	x5 ea.
<b>F</b>	M6x60 Bolt + Washer	x10
<b>G</b>	Routed Door Guide	x1
<b>H</b>	ST4.2x35 Screw	x2
<b>I</b>	Anchor	x2
<b>J</b>	1.5mm Allen Key	x1
<b>K</b>	Hole Cover	x4
<b>L</b>	72" Rail	x1

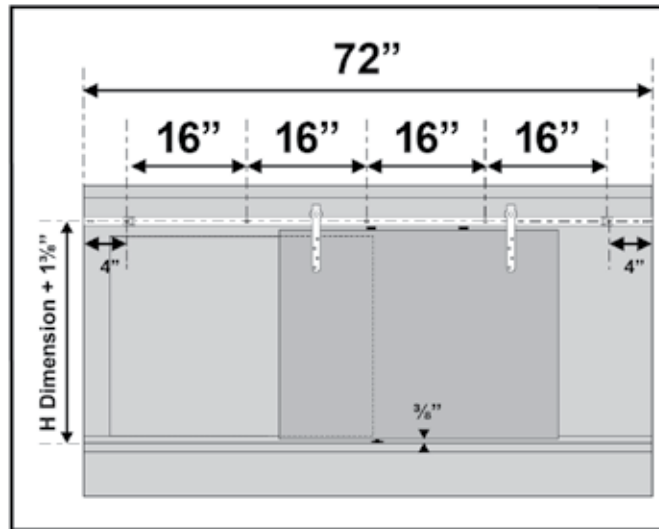
PLEASE NOTE: The installation manual is a suggested guideline. Adjustments may need to be made based on your specific application.

Outwater Industries, Inc. assumes no liability for improper installation.

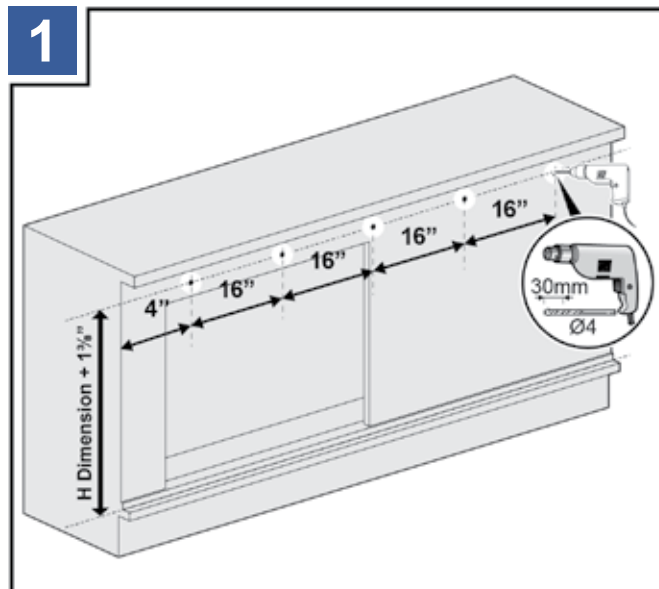
## UNDERSTANDING YOUR RAIL



## INSTALLATION

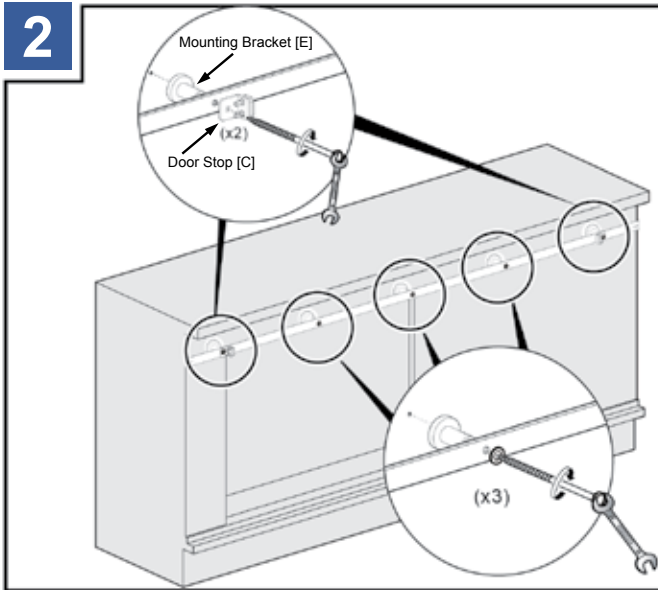


Using a pencil, mark the locations where you will drill holes as indicated.

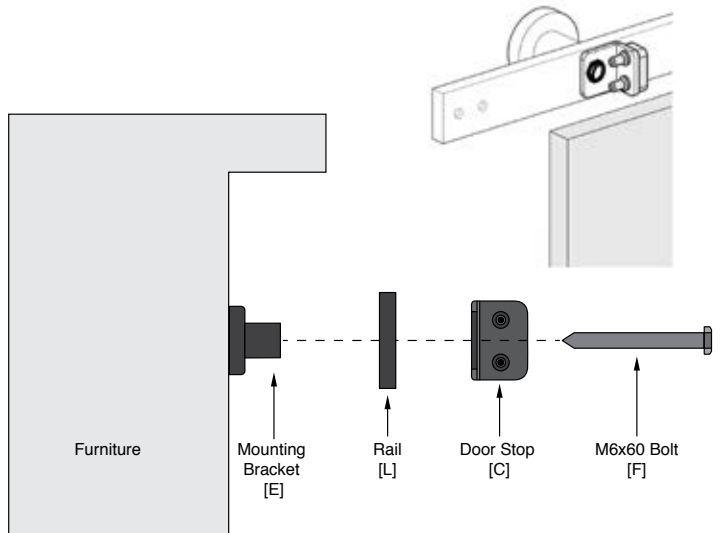


Using a power drill with a 4mm drill bit, drill holes as indicated.

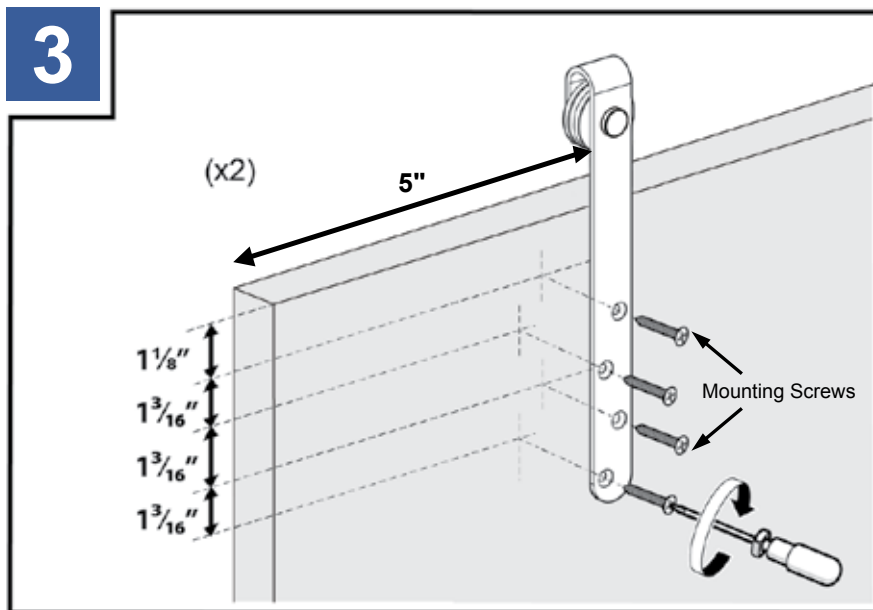
Outwater Industries, Inc. assumes no liability for improper installation.



Install the rail, mounting brackets [E], and door stops [C].



NOTE: Door stops [C] are installed on the outermost holes of the rail and shares the same mounting hardware [E].

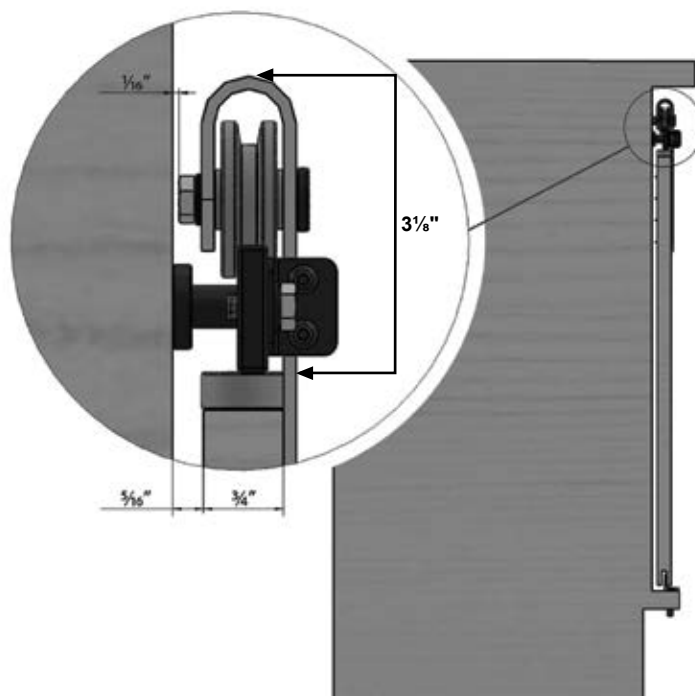


Drill holes into the doors as indicated. Attach the roller straps [A].

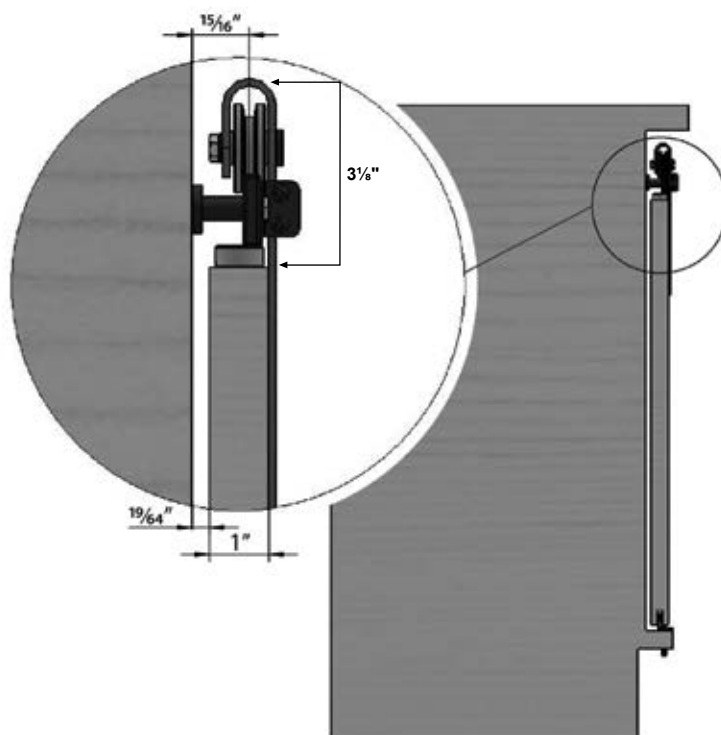
It is suggested that the roller strap [A] be mounted 5" from the edge of the door to the neck of the roller strap.

NOTE: Trimming the rail will alter the position of the roller hardware. Adjust accordingly.

## FOR $\frac{3}{4}$ " DOORS

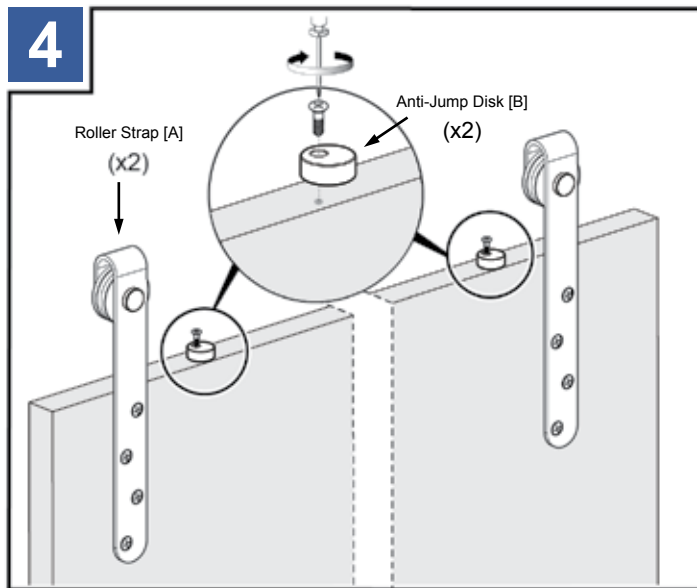


## FOR 1" DOORS

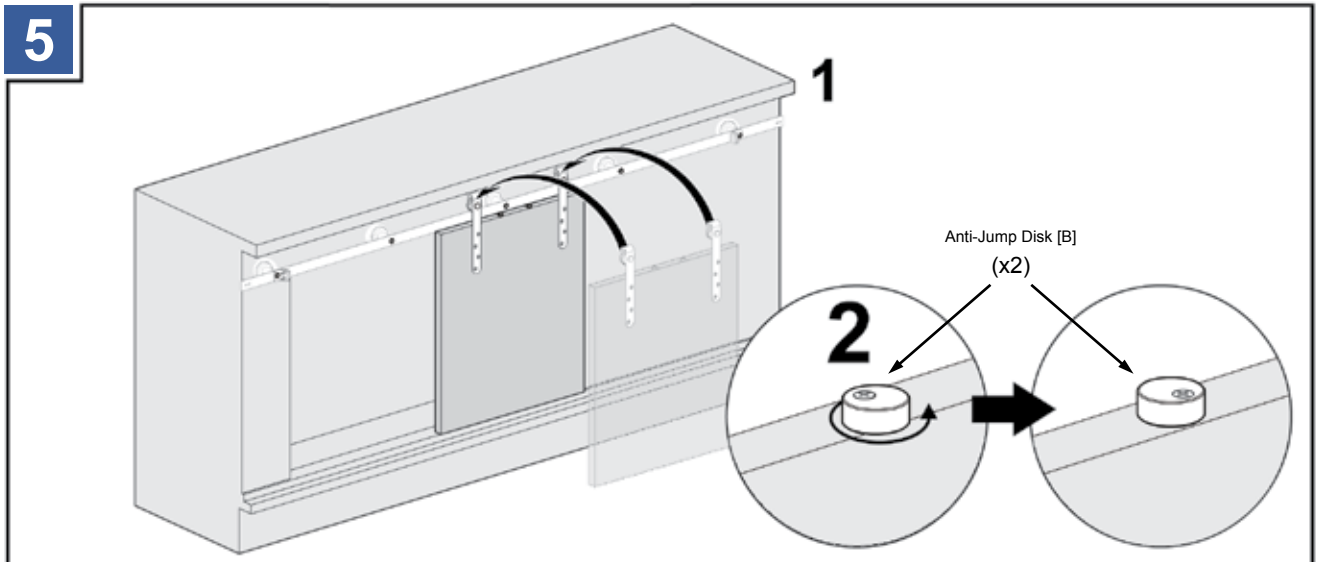


Allow a minimum 3-1/8" clearance above the doors.

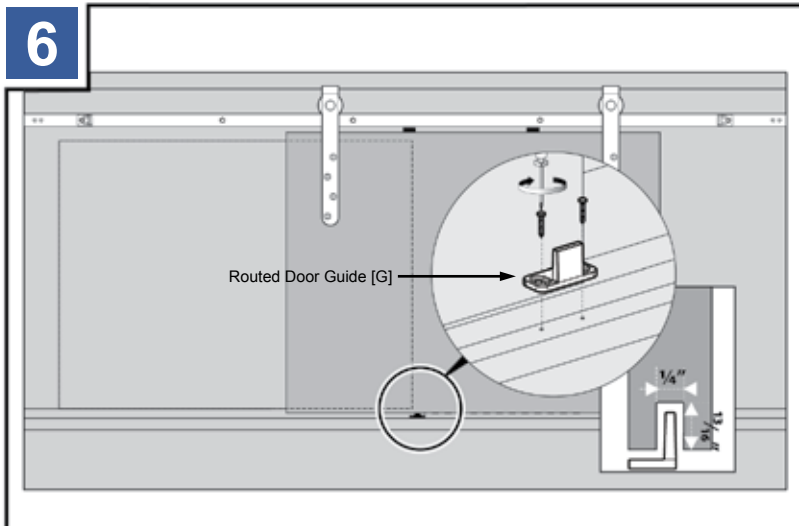
Outwater Industries, Inc. assumes no liability for improper installation.



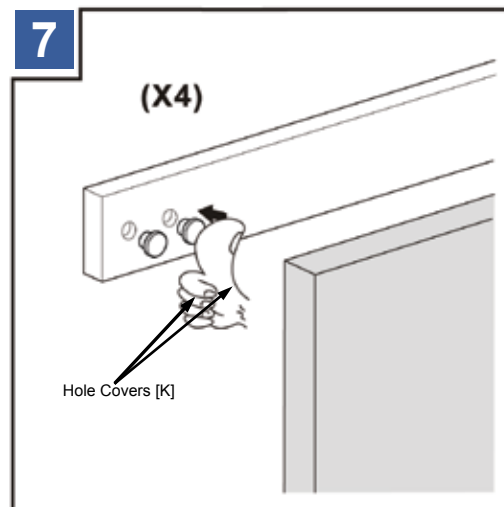
Attach the anti-jump disks [B] to the doors.



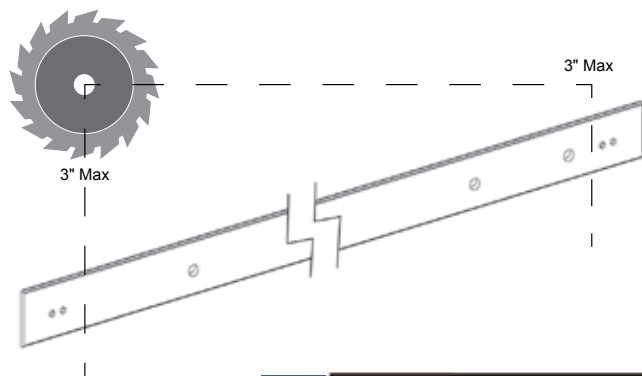
Attach the doors to the rail [L] and lock the anti-jump disks [B] into position. Doors should be routed beforehand if using the routed door guide [G].



If using the routed door guide [G], install at this time.

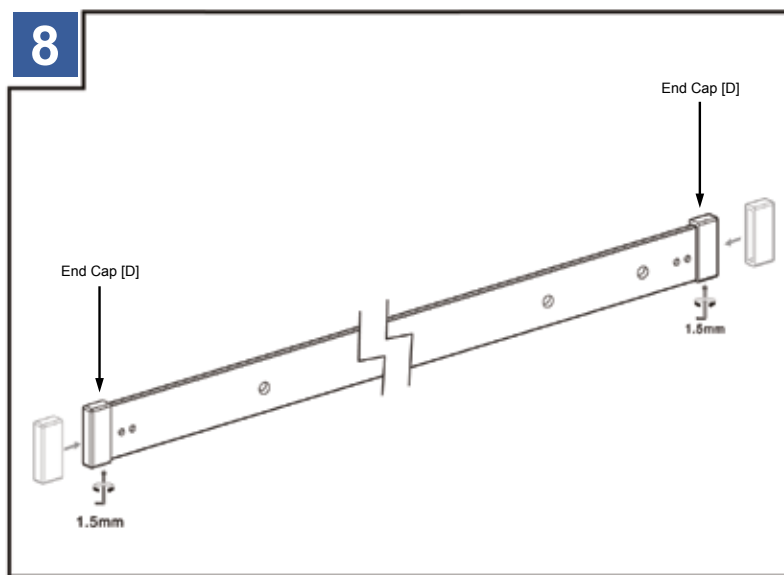


Use the hole covers [K] to give the rail a finished look.



The rail can be trimmed if necessary using a band saw. Use blades suitable for iron or stainless steel depending on your rail.

NOTE: If you are trimming the rail, do so equally. Each rail can be trimmed equally up to 3" on both sides. However; trimming will alter the position of the roller hardware. Adjust accordingly.



Once cut, add the end caps [D] to the ends of the rail and secure with a set screw.