

Installation Guide: 6" Adjustable Wafer Downlight

L12-DLR6-27/50-D-ADJ

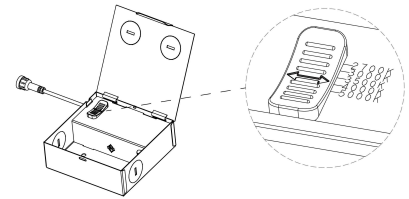
SIMPLYCONSERVE®

1. Read instructions carefully before attempting to install.
2. Disconnect power before installing or servicing.
3. Wire light in accordance with local codes and ordinances.

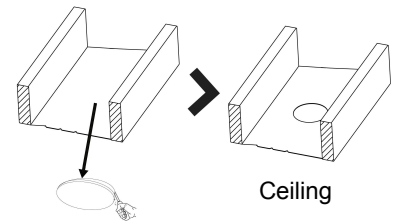
WARNING: Risk of fire or electric shock. LED retrofit kit installation requires knowledge of luminaire electrical systems. If not qualified, do not attempt installation. Contact a qualified electrician.

Installation Steps:

Step 1: Before fixture installation, select preferred CCT by moving the switch to 2700K, 3000K, 3500K, 4000K, or 5000K.

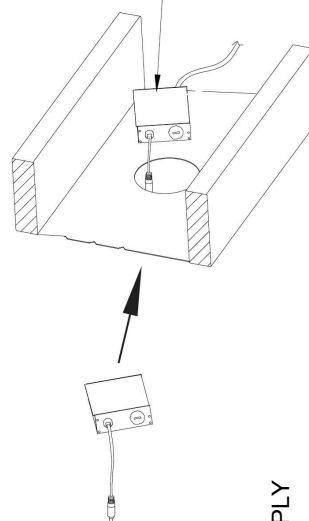


Step 2: Select desired method of cutting hole (i.e. hand saw, hole saw). **CAUTION:** DO NOT CUT HOLE LARGER THAN FRAME PLATE OPENING.

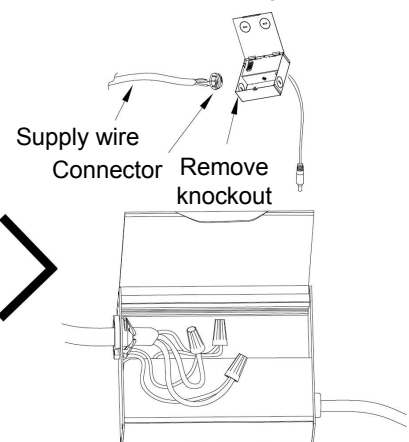


Step 3: Secure junction box to frame plate.

Secure wire to prevent damage while cutting hole



Use wire nuts to make connections. Place splices in J-box before closing cover.



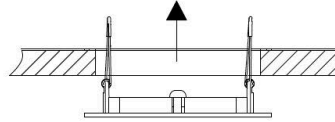
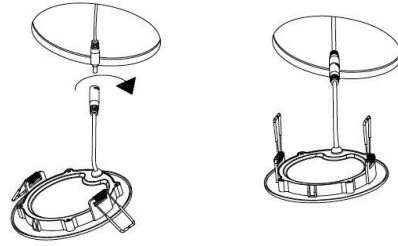
SUPPLY

GROUND
LINE
COMMON

GREEN
BLACK
WHITE

DRIVER

Step 4: Connect downlight to junction box power cord and install.



Insert downlight cord into junction box and twist to lock



Push and hold both installation springs in a vertical position