



10273LF
10277LF

Dual Control Bathroom Faucet

With Pop-Up

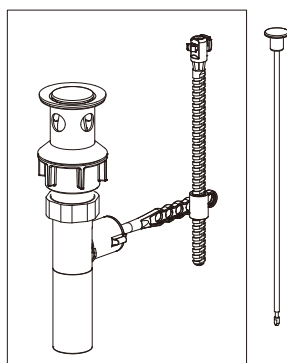
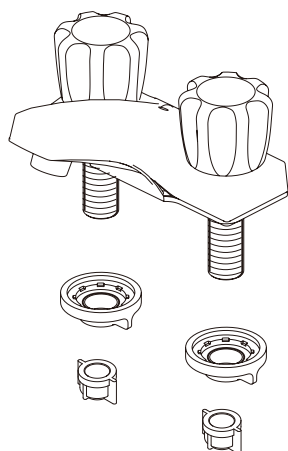
LIMITED LIFETIME WARRANTY



Before You Begin

Check to make sure you have the following:

This product is engineered to meet the EPA WaterSense flow requirement. The flow rate is governed by the aerator or flow controller. If replacement is ever required, be sure to replace it with a WaterSense compliant aerator or flow controller to retain the water conserving flow rate of this product.

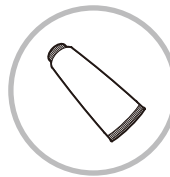


Tools and Supplies

You will need the following to install your new faucet:



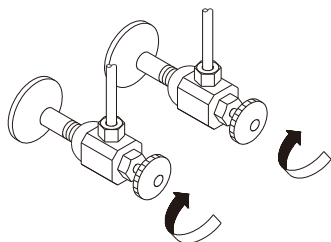
Adjustable
Wrench



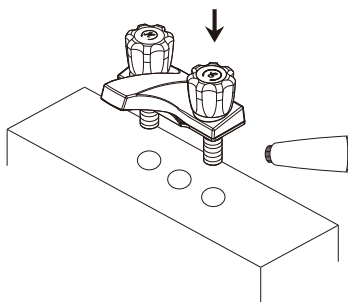
Silicone
Sealant

Faucet Installation

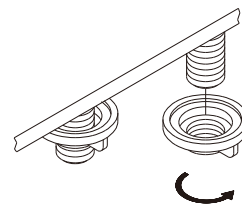
Shut off main water supply before installation.



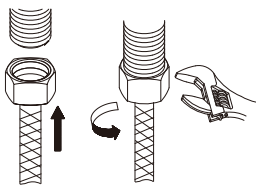
1 Shut off hot and cold water supply to faucet or turn off main water supply.



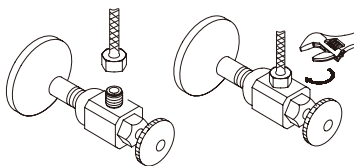
2 Position faucet. Apply clear silicone sealant to base plate.



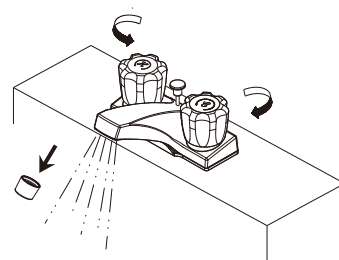
3 Secure with mounting nuts. Clean up excess silicone.



4 Securely attach water supply hoses or tubes onto inlet ports.

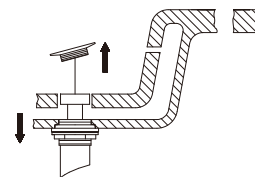
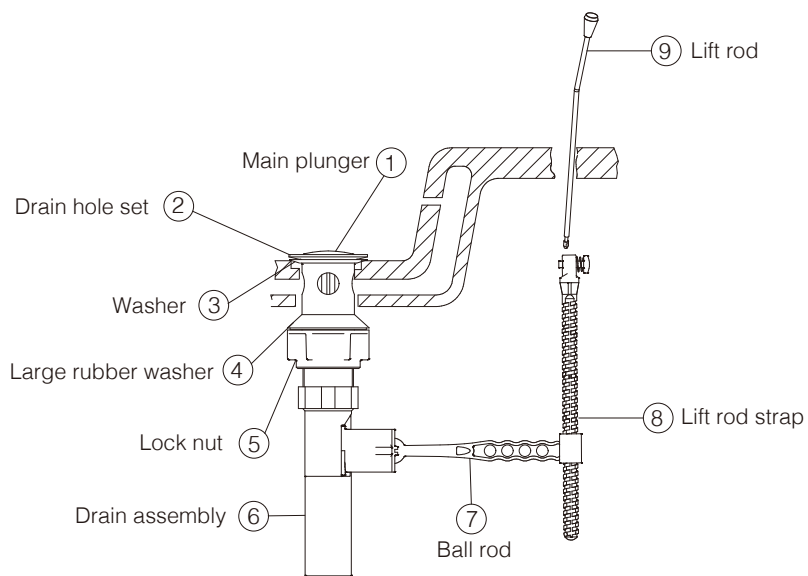


5 Tighten the hose onto water supply.

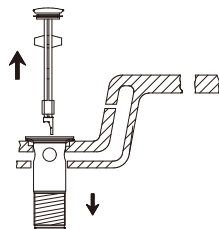


6 After installing faucet, remove aerator and turn on water to remove any left over debris. Reassemble aerator and tighten.

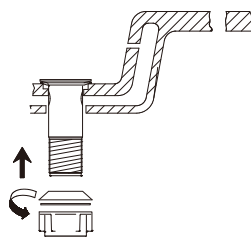
Pop-Up Drain Installation



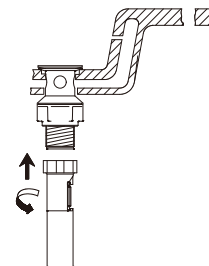
1 Remove old pop-up drain assembly.



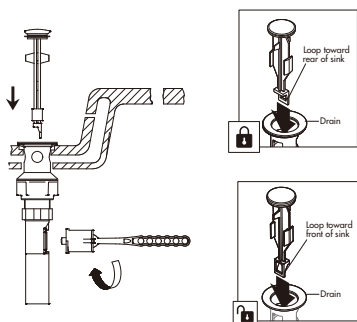
2 Remove plunger. Install drain hole set.



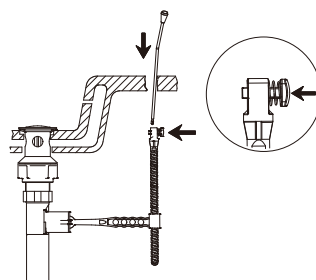
3 Attach rubber washer onto the thread of drain hole set and tighten lock nut.



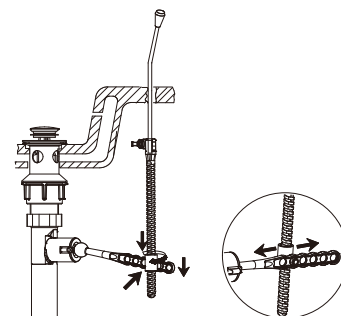
4 Attach drain assembly.



5 Insert plunger. Insert ball rod into drain assembly.
NOTE: Plastic loop on plunger facing rear of sink is in locked mode and plunger cannot be removed. Plastic loop on plunger facing the front of sink is in unlocked mode and can be removed for easy cleaning.



6 Insert lift rod through faucet and attach lift rod strap to lift rod. Push button to allow lift rod to slide through. Release to lock.



7 Push down the ball rod so that the drain is at "open position". Rotate the connector on the strap to the proper height to connect to the ball rod when it is at "open position".

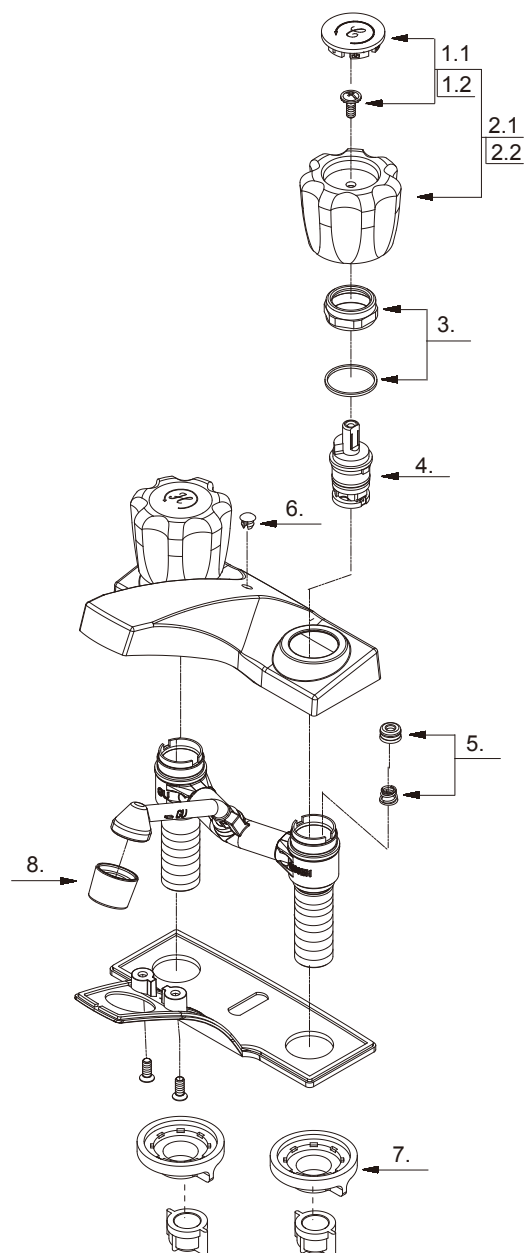
Troubleshooting Guide

Minor problems often can be fixed without a plumber. Before doing any work on the faucet, shut off water supply and close stopper or drain to avoid losing small parts.

Problem	Cause	Solution
Leak from spout	Damaged or dirty seals	Disassemble faucet, remove cartridge. Clean or replace cartridge if necessary. Reassemble.
Leak from under handle	Damaged cartridge	Remove handle. Replace cartridge.
Uneven water spray	Clogged aerator	Remove aerator. Clean or replace aerator if necessary.
Leak from around aerator	Bad aerator seal	Remove aerator. Check to see that seal is flat and undamaged. Replace aerator if necessary.
Water drains slowly or not at all	Clogged drain	Remove stopper. Remove visible debris. If still clogged, remove and clean trap. Reassemble.

Replacement Parts

Keep this manual for ordering replacement parts.

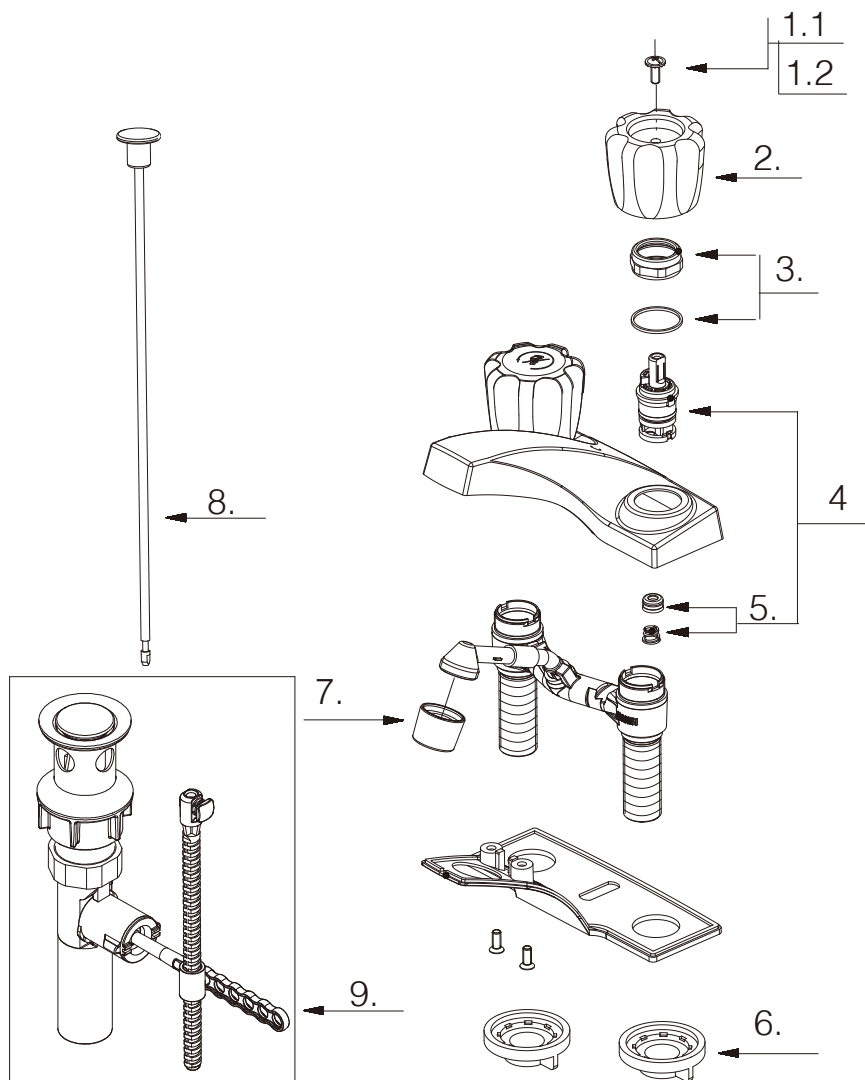


10277LF

1.1	Index Button - Cold	A66E233C
1.2	Index Button - Hot	A66E233H
2.1	Acrylic Handle Assembly – Cold	A66E132
2.2	Acrylic Handle Assembly – Hot	A66E137
3	Retainer Nut & Washer	A66D639
4	Cartridge Assembly	A507043N
5	Seat & Spring Set	A663002
6	Lift Rod Plug	A028002
7	Lock Nut Set	A504023
8	Aerator 1.2gpm	A500267N-55-P

Replacement Parts

Keep this manual for ordering replacement parts.



10273LF

1.1	Index Button - Cold	A66E233C
1.2	Index Button - Hot	A66E233H
2	Acrylic Handle	A029001
3	Retainer Nut & Washer	A663631
4	Cartridge Assembly	A66D636N
5	Seat & Spring Set * 2	A663002
6	Lock Nut Set	A504023
7	Aerator 1.2gpm	A500267N-55-P
8	Lift Rod	A025618
9	50/50 Pop-up Assembly	A525371