



Star brite®

# PERFORMACIDE®

DISINFECTANT • DEODORIZER



Star brite®  
**PERFORMACIDE®**  
DISINFECTANT • DEODORIZER

**THE**

*different*

**DISINFECTANT**

This is your very own sample of  
**PERFORMACIDE**. Try it out.  
See what you think. Experience the  
difference a disinfectant can make.

A difference you can live with.

**A *new* era of cleaning.**

Use as directed. To activate product, follow  
directions on pouch or on the last page.  
Performacide is approved for use on both  
food- and non-food contact surfaces. See  
full label for uses and dwell times.



Star brite®

# PERFORMACIDE®

DISINFECTANT • DEODORIZER

## THE *positive* ADVANTAGE

- + No wipe, no rinse, **no residue**
- + Sealed, pre-measured pouches are **easy to use**
- + Pouches store for years; **ready for emergencies**
- + Stays **fresh for 15 days** after activation
- + **No harsh chemical fumes**
- + **Eliminates allergens** and odors
- + **No carcinogens** or poisonous residuals
- + **Naturally** dissipates
- + Ships without water to help **reduce carbon emissions**
- + Kills SARS-CoV-2 in just **30 Seconds**



## IT'S *easy* TO USE

To make a bottle of **PERFORMACIDE**, open the included sample in this booklet, and slide out the white pouch.

Insert the white pouch into a 32oz spray bottle. Choose a bottle that's not clear.

Add water and activate by shaking.  
It's that easy.

Read the full label printed on the foil pouch for more information and directions for use.

For full dilution guideline and for disinfection and sanitation times, visit [www.PERFORMACIDE.com](http://www.PERFORMACIDE.com).



Star brite®

# PERFORMACIDE®

DISINFECTANT • DEODORIZER

**PERFORMACIDE** is the leader in on-the-spot chlorine dioxide generation, providing powerful disinfection and sanitizing technology without heavy machinery.

## A *timeline* of Chlorine Dioxide

**1814**



Chlorine dioxide is discovered by Sir Humphrey Davy

**1944**



Chlorine dioxide is used for the first time to solve taste and odor issues in a water treatment plant at Niagara Falls, New York.

**1956**

Brussels, Belgium switches from chlorine to chlorine dioxide to safely treat drinking water.



**1967**

The EPA first registers chlorine dioxide as a disinfectant and sanitizer.



**1970**

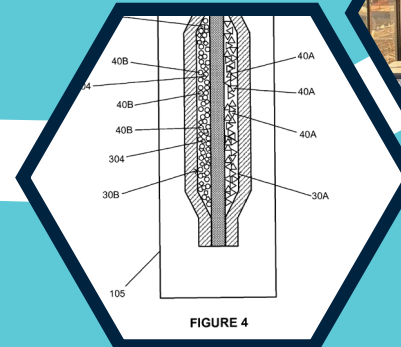
Hundreds of municipal water systems across the US and Europe successfully convert to chlorine dioxide.

**1990**



Big industries such as beverage & bottling and fruit & vegetable processing plants adopt chlorine dioxide as a disinfectant, sanitizer and sterilizer.

**2014**



The patented Permachlorine pouch is registered with the EPA as a disinfectant and sanitizer, making Chlorine Dioxide generation available to everyone in the USA.

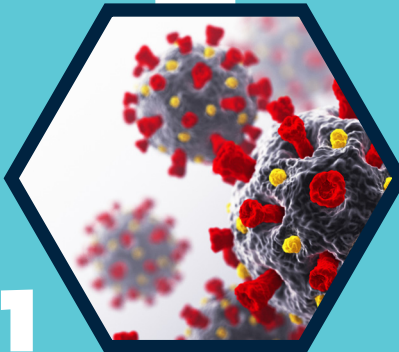
**2021**

**PERFORMACIDE** meets all criteria for Emerging Pathogen Claims as defined by the EPA, and is approved to kill SARS-CoV-2, the virus that causes COVID-19, in 30 seconds.



**2017**

Permachlorine is used across the USA in major transport hubs to stop the spread of infections.





Star brite®

# PERFORMACIDE®

## DISINFECTANT • DEODORIZER

**PERFORMACIDE** is a multi-use disinfectant. Gentle enough to use as a food-surface sanitizer, yet powerful enough to take care of industrial-scale disinfection protocols. Available in several pre-measured pouch sizes, **PERFORMACIDE** can achieve different dilutions depending on the scope of the cleaning.



### Dilution: 5 ppm

#### Uses:

Sanitizer for hard, non-porous, food-contact surfaces  
To extend shelf-life of fruits and vegetables  
Antimicrobial treatment for poultry drinking water



### Dilution: 20 ppm

#### Uses:

Sanitizer For Hard, Non-Porous, Non-Food-Contact Surfaces



### Dilution: 100 ppm

#### Uses:

Disinfectant or Virucide\* For Hard, Non-Porous Surfaces

Suitable For Trauma Scene Decontamination

Disinfectant For Clean-In-Place (Cip) Applications For Potable Water Systems

Disinfect And Inactivate Avian Influenza-A And Other Animal Viruses Listed On This Label At Dairy, Poultry, Swine, Turkey And Animal Farms, Hatcheries, Veterinary Practices, Animal Care, Animal Laboratories, Zoos, Pet Shops, Kennels, Breeding And Grooming Establishments, Tack Shops And Animal Life Science Laboratories

To Sanitize Non-Porous Gloves And Shoes In Animal And Agricultural Facilities



Nonfood Compounds  
Program Listed: D2  
Registration: 161687

**NSF-Listed.** Antimicrobial agents  
not always requiring a rinse.

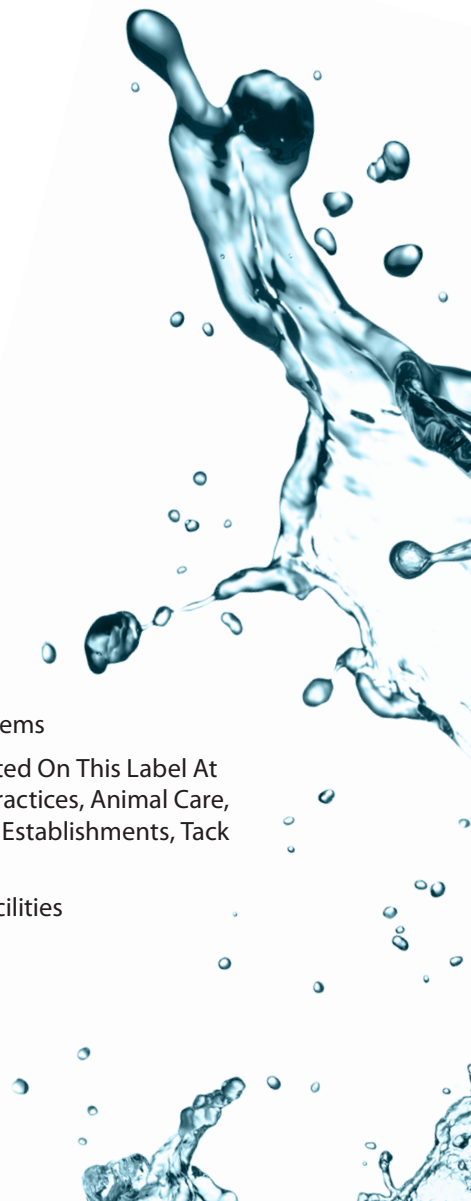


### Dilution: 500 ppm

#### Uses:

Suitable For Sewer Backup And River Flooding

Suitable For Water And Smoke Damage Restoration





**Starbrite**  
**PERFORMACIDE®**  
**DISINFECTANT • DEODORIZER**

Disinfectant/Sanitizer/Tuberculocide/Virucide\*  
Fungicide/Algaecide/Slimicide/Deodorizer

Produces 32 oz., 1 Gallon, 5 Gallons of 100 PPM Chlorine Dioxide Solution When Activated

ACTIVE INGREDIENT: Sodium Chlorite \_\_\_\_\_ 30.5%  
OTHER INGREDIENTS: \_\_\_\_\_ 69.5%  
Total \_\_\_\_\_ 100%

Amount of Chlorine Dioxide generated = 0.01%

**KEEP OUT OF REACH OF CHILDREN**  
**DANGER**  
(See back panel for other cautions)

EPA REG. NO. 87508-3  
EPA Establishment No. 62788-UL-001

# Directions For Use

It is a violation of Federal Law to use this product in a manner inconsistent with the labeling. Read the entire label and use strictly in accordance with precautionary statements and use.

This product, when used in accordance with directions on hard, non-porous surfaces such as stainless steel, glass, vinyl, polypropylene, PVC or other hard non-permeable surfaces, is an effective disinfectant, sanitizer, algaecide, tuberculocide, fungicide, general-purpose antimicrobial and surface cleaner. Applications include medical laboratories, hospitals, rehabilitation facilities, diagnostic centers, clinics, first-responder facilities and equipment, veterinary hospitals, medical equipment, pharmaceutical facilities and laboratories, as well as food processing and serving facilities, beverage bottling facilities. The formulation may be applied via mop, sprayer or sponge, with visibly soiled surfaces pre-cleaned as needed by means of a non-disinfectant cleaning agent. Formula must be applied to ensure visible wetness of surface to be treated. Visibly soiled surfaces must be pre-cleaned prior to treatment.

To activate the system, tear open the foil package and remove the white inner pouch. Do not open white inner pouch. Add the pouch to an opaque (not clear) bottle with the correct amount of water as indicated by the table below and agitate for one minute at 15 minute intervals until full activation at 1 hour, for a total of five agitations in one hour's time.

If any formula remains unused, pour unused formula into a dark closed or sealed container in a cool, dark location that is not subject to any sunlight and is separate from any food for human or animal consumption, making sure to use stored formula within 15 days of activation. Record activation date onto the container. Dispose of stored formula after 15 days.

To achieve 100 ppm:

Size of Pouch	0.042 oz (1.19 g)	0.17 oz (5.0 g)	0.84 oz (23.8 g)
Water	1 quart	1 gallon	5 gallon

Solution will be usable in 60 minutes (1 hour).

NOTE: Allow ONE (1) HOUR BEFORE USE TO ENSURE SOLUTION REACHES FULL STRENGTH. Be sure to agitate upon addition of the pouch to the water, at 15-minute intervals, and before initial use. Total of 5 agitations of 1-minute for one hour. Temperature must be kept between 20-25°C.

Use only in a well-ventilated area and avoid inhaling fumes. Wear protective gloves if hands will come into contact with activated solution during dilution or application.

Use the following instructions to achieve the use concentration indicated based on a nominal concentration of 100 ppm:

To Achieve Use Concentration of:	Use Dilution Device or Sprayer With a Dilution Ratio of:
20 ppm	1:5 (one part 100 ppm solution to 4 parts water)
5ppm	1:20 (one part 100 ppm solution to 19 parts water)

**DISINFECTANT OR VIRUCIDE\* FOR HARD, NON-POROUS SURFACES:** Product must be used with an exposure time of 10 minutes at 100 ppm to disinfect.

**BACTERIA** Methicillin-resistant *S. aureus* (MRSA), Vancomycin-resistant *Enterococcus faecalis*, *Staphylococcus aureus*, *Pseudomonas aeruginosa*, *Salmonella enterica*, *Mycobacterium bovis* (TB), *Listeria monocytogenes*

**Fungi** Trichophyton interdigitale (athlete's foot), *Candida albicans*  
**Viruses\*** on hard surfaces (in medical or veterinary facilities) to decontaminate Human Immunodeficiency Virus Type 1 (HIV-1), Herpes Simplex-2, Feline Calicivirus, Coronavirus, Hepatitis A, Poliovirus-1, Rotavirus, Influenza-A virus, Rhinovirus type 37, Canine Parvovirus, Bordetella Bronchiseptica (kennel cough) (ATCC 10580), Canine Distemper Virus, Strain Snyder Hill, (ATCC VR-1587), Feline Panleukopenia Virus (Feline Distemper) (ATCC VR-648), Adenovirus type 5, Vaccinia, and Norovirus. Product must be used with an exposure time of 30 seconds at 100 ppm to disinfect: SARS-Related Coronavirus 2 (BEI Resources NR-52281) (Strain: USA-WA 1/2020) [SARSCoV-2]

**SANITIZER FOR HARD, NON-POROUS, NON-FOOD-CONTACT SURFACES:** Formula may be used to sanitize non-food contact surfaces at a dilution ratio of 20 ppm and an exposure time of 5 minutes against *Listeria monocytogenes*, *Staphylococcus aureus* and *Klebsiella pneumonia*. Formulation may be applied to non-food contact surfaces, to include but not be limited to walls, furniture, floors, and equipment. Dilute to 20 ppm as table above specifies.

**SANITIZER FOR HARD, NON-POROUS, FOOD-CONTACT SURFACES:** Effective food contact surface sanitizer at an exposure time of 1 minute at a dilution of 5 ppm against *E. coli* and *E coli* O157:H7, *Staphylococcus aureus* and *Salmonella typhimurium* (MDRS). Product may be used on previously cleaned food preparation surfaces; fountain drink and beverage dispensers; glassware, plates and eating utensils and food and beverage processing equipment at a dilution of 5 ppm and an exposure time of 1 minute.

**SUITABLE FOR TRAUMA SCENE DECONTAMINATION: KILLS HIV ON PRE-CLEANED HARD, NON-POROUS SURFACES PREVIOUSLY SOILED WITH BLOOD/BODY FLUIDS:** In health care settings (Hospitals, Nursing Homes) and other settings in which the surfaces/objects likely to be soiled with blood/body fluids can be associated with the potential for transmission of Human Immunodeficiency Virus Type 1 (HIV-1) (associated with AIDS). Personal Protection: Disposable latex or vinyl gloves, gowns, face masks and eye coverings as appropriate, must be worn during all cleaning of body fluids, blood and decontamination procedures. Cleaning Procedures: Blood/body fluids must be thoroughly cleaned from surfaces/objects before application of (PERFORMACIDE). Disposal of Infectious Material: Blood/body fluids should be autoclaved and disposed of according to Federal, State and local regulations for infectious waste disposal. Contact Time: Product must be used with an exposure time of 10 minutes at 100 ppm.

**TO EXTEND SHELF-LIFE OF FRUITS AND VEGETABLES:** This product may be used for 1 minute at a dilution of 5 ppm in food processing facilities in order to control spoilage microorganisms on raw agricultural commodities (RACs). Apply via sprayer or dip RACs into formulation, followed by a rinse with potable water or by cooking, blanching or canning. Dilute to 5 ppm as table above specifies.

**FRUIT AND VEGETABLE RINSE ANTIMICROBIAL APPLICATIONS / TO CONTROL THE BUILDUP OF MICROBES IN PROCESS WATERS FOR ASSOCIATED LINES, TANKS AND FLUMES:** This product will control and inhibit the build-up of microbes in water used to process fruits and vegetables. The recommended residual concentrations of chlorine dioxide are between 0.25 ppm and 5.0 ppm. Dilute to 0.25 ppm or 5 ppm as table above specifies. In order to maintain desired concentration, inject formulation to the system either continuously or intermittently as needed. Frequency and volume of replenishment is subject to the severity of contamination of vegetables and fruits being processed, as well as target concentration, and process design.

**ANTIMICROBIAL AND GENERAL CLEANING APPLICATIONS FOR POTABLE WATER SYSTEMS:** This product is effective as a means of reducing microbial populations in potable water holding tanks and lines of boats or RVs (recreational vehicles), as well as in the wastewater lines and tanks of boats and RVs. It can also be used in beverage equipment including fountain drink equipment and related storage, transfer and dispensing lines of this equipment. It is also effective when used to clean such equipment to remove organic materials and eliminate/prevent odors. Any such use must be followed by a thorough rinsing with potable water. To achieve a level of 50 ppm, use one activated pouch (2 liters) for each 50 gallons of tank or line capacity, rounding up to the next higher number of pouches (i.e., using two pouches to treat a 100-gallon tank, or four pouches to treat two 80-gallon tanks with a combined capacity of 160 gallons).

**DISINFECTANT FOR CLEAN-IN-PLACE (CIP) APPLICATIONS FOR POTABLE WATER SYSTEMS:** This formula is effective as a disinfectant for potable water lines or

transfer and dispensing equipment that have or may have been contaminated with bacteria (methicillin-resistant *S. aureus*, vancomycin-resistant *Enterococcus faecalis*, *Salmonella enterica*, *Staphylococcus aureus*, *Pseudomonas aeruginosa*) and/or fungi (*Candida albicans*). Dilute as table above specifies to either 100 ppm solution for a 10-minute exposure time or to 50 ppm solution for a 20-minute exposure time. **ANTIMICROBIAL TREATMENT FOR POULTRY DRINKING WATER:** This product may be used at up to 5 ppm to control microorganisms in drinking water intended for poultry. Dilute to 5 ppm or use directly in system with automatic, on demand injection system metered to produce an end concentration of 5 ppm. Note: application specifics may vary subject to metering system, frequency of replenishment, and the overall capacity of drinking container.

**ANTIMICROBIAL APPLICATIONS FOR NON-POTABLE WATER SYSTEMS IN HORTICULTURAL SETTINGS:** This product may be used to control and reduce microbial populations in non-potable water used with cut flowers in order to minimize microbial transfer from water to flower in order to maintain/maximize the freshness of cut flowers and to extend their shelf life. Dilute to 5 ppm as table above specifies.

**DISINFECT AND INACTIVATE AVIAN INFLUENZA-A AND OTHER ANIMAL VIRUSES LISTED ON THIS LABEL AT DAIRY, POULTRY, SWINE, TURKEY AND ANIMAL FARMS, HATCHERIES, VETERINARY PRACTICES, ANIMAL CARE, ANIMAL LABORATORIES, ZOOS, PET SHOPS, KENNELS, BREEDING AND GROOMING ESTABLISHMENTS, TACK SHOPS AND ANIMAL LIFE SCIENCE LABORATORIES:** Remove all litter, droppings and manure from the floors, walls and surfaces of pens, stalls, barns, chutes and other facilities and fixtures occupied or traversed by animals. Empty all troughs, racks and other watering appliances. Thoroughly clean all surfaces with soap, detergent and rinse with water. Product must be used with an exposure time of 10 minutes at 100 ppm. For hard, non-porous surfaces, apply product using a cloth, mop, sponge or mechanical coarse or hand pump spray device until the surface is thoroughly wet. Immerse all animal handling and restraining equipment as well as forks, shovels, and scrapers used to remove litter and manure. Treated surfaces must remain wet or be immersed for 10 minutes. Do not rinse. Allow to air dry.

**TO SANITIZE NON-POROUS GLOVES AND SHOES IN ANIMAL AND AGRICULTURAL FACILITIES:** This product will sanitize gloves and shoes made from non-porous materials, such as rubber, neoprene, latex, and treated, waterproofed, or water-resistant leather. Prepare product to 100 ppm in accordance with chart above. Store the solution in an open container. Remove visible filth from gloves or shoes and dip gloves or shoes into the solution. Treated surfaces must remain wet or be immersed for 5 minutes. Replace the solution daily or when the solution appears soiled.

**CARPETS, CARPET CUSHIONS, UPHOLSTERY, DRAPES AND OTHER POROUS MATERIALS, SUB FLOORS, DRYWALL, TRIM, AND FRAME LUMBER, TACKLESS STRIP AND PANELING:** To use as a deodorizer against water and fire damage, extract excess water and test PERFORMACIDE in a hidden area for colorfastness. Remove gross filth and heavy soil. Apply product directly with a mechanical coarse spray device (or coarse pump or trigger spray device) to fully saturate affected materials. For spray applications, spray 8-10 inches from surface. Follow with thorough extraction and rapid drying.

**SUITABLE FOR ALLERGEN REMOVAL:** To remove and reduce specified allergens: Spray, wait 1 minute, and wipe excess. Rinse or allow to air dry. If streaking is observed, wipe with a clean, damp cloth or paper towel.

Allergens Removed: Cockroach matter and particles; Dust mite matter and particles; Pet dander -and/or- dog -and/or cat dander.

**FUNGICIDE:** This product is fungicidal against the pathogenic fungi *Fusarium solani*, *Trichophyton interdigitale* (Athlete's Foot Fungus and a cause of ringworm), *Candida albicans*, and *Aspergillus niger*. Apply product at 100ppm with a cloth, sponge or trigger sprayer to hard, non-porous surface(s) found in bathrooms, shower stalls, locker rooms, exercise facilities or other clean, non-food contact surfaces commonly contacted by bare feet. Allow the surface to remain wet for 10 minutes. Allow to air dry. Product may be applied daily or more frequently with heavy facility use.

**GENERAL SLIMICIDE, AND ALGAECIDE (FOR INDOOR AND OUTDOOR AGRICULTURAL FACILITY, GREENHOUSE, HORTICULTURAL, HYDROPONIC, AND CULTIVATION FACILITY APPLICATIONS):** This product may be used to treat and control fungi, slimes, and algae with an exposure time of 10 minutes at 100ppm and sanitize (with an exposure time of 5 minutes at 20ppm) hard, non-porous surfaces. **DIP TO CONTROL AND SUPPRESS BACTERIA (*Erwinia chrysanthemi*), ALGAE (such as *Phormidium boneri*), AND FUNGI (SUCH AS *Penicillium digitatum*, *Botrytis sp.* AND *Fusarium solani*) ON ROOTED AND UNROOTED CUTTINGS AND CUT FLOWERS:** Prepare product to 5ppm in accordance with chart above.

Dip cuttings or cut flowers and ensure they remain visibly wet with the solution for at least one minute.

**DIP OR DRENCH TO CONTROL AND SUPPRESS BACTERIA (*Erwinia chrysanthemi*), ALGAE (*Phormidium boneri*), AND FUNGI (*Penicillium digitatum*, *Botrytis sp.*, *Fusarium solani*, *Pythium aphanidermatum*, *Pythium irregulare*, *Fusarium oxysporum f. sp. Basilicum (Fob)*) IN SEED-BED SOIL AND PLANTING CUBES:** Prepare product to 5ppm in accordance with chart above. Submerge or dip seed-bed soil and/or planting cubes and allow them to remain visibly wet for 10 minutes. Seed-bed soil and/or planting cubes can be seeded or planted immediately after treatment.

**TO CONTROL AND SUPPRESS BACTERIA (*Erwinia chrysanthemi*), INCLUDING ALGAE (*Phormidium boneri*), FUNGI (*Penicillium digitatum*, *Botrytis sp.*, *Fusarium solani*, *Pythium aphanidermatum*, *Pythium irregulare*, *Fusarium oxysporum f. sp. Basilicum (Fob)*), ON ORNAMENTALS, EDIBLES:** Prepare product to 5ppm in accordance with chart above. Submerge ornamentals, edibles and ensure crop is visibly wet for 10 minutes.

**TO REMEDIATE AND/OR CONTROL MOLD:** For use on hard, non-porous surfaces. Product must come in direct contact with mold to be effective. Surfaces treated must be completely wet with product for 10 minutes at recommended dilution (in chart).

Product can be used as part of a comprehensive mold remediation or water damage restoration program, including monitoring for conditions favorable to mold growth such as moisture present and high relative humidity; eliminating conditions favorable to mold growth; drying affected areas to below 20% moisture content. When water damage is suspected, eliminate water source, and then remove excess water, drying surfaces thoroughly; Product can be used on materials removed for disposal. If excess water is removed within 24 hours and surface is thoroughly dried, spraying affected surfaces with product will control growth on uncontaminated surfaces for up to a week. Building materials exposed to water in excess of 24 hours may have extensive microbial growth that is not visible; prepare a complete assessment and remediation plan to incorporate product use. Recommended Mold and Mildew Remediation Websites:

[www.iaqa.org](http://www.iaqa.org) IAQA • [www.epa.gov](http://www.epa.gov) EPA • [www.nyc.gov](http://www.nyc.gov) New York City • [www.ilcrrc.org](http://www.ilcrrc.org) ILCRC

1. Remove heavy soil.
2. Apply product on area until evenly wet.
3. Allow treated surfaces to dry completely.

Mold stains may remain visible following treatment. This is normal. Do not expect product to whiten stains. If additional steps are taken to remove the stain, reapply product as a final step to protect area from regrowth.

**Large Areas - Total Surface Area Affected Greater Than 30 Square Feet:** Areas larger than 30 square feet require special procedures and individuals trained in remediation. Refer to the recommended websites for guidelines on remediation. Before using PERFORMACIDE to mitigate large areas, you should understand one or more of these guidelines. Follow these guidelines to apply PERFORMACIDE. When water damage is suspected, first locate the source of water and eliminate it. Next, remove excess water and thoroughly dry surfaces. See ILCRC500 (Recommended Websites) for guidance on water removal. If excess water is removed within 24 hours and surface thoroughly dried, spraying affected surfaces with PERFORMACIDE will control growth on uncontaminated surfaces for up to a week. Structural members and if/or contents exposed to water in excess of 24 hours may have extensive microbial growth that is not visible. Prepare a complete assessment and remediation plan to incorporate PERFORMACIDE use, provide for user and occupant safety and to document and monitor the remediation process. PERFORMACIDE can be used on materials removed for disposal and in other applications where antimicrobial use is indicated.

**Reapplication:** Reapply weekly or when growth or odor reappears. Determine and correct the cause of re-growth before reapplication. Reapply if surfaces are washed or painted. Reapply weekly on hard surfaces and monthly on fabrics, or whenever new growth appears.

**Personal protection equipment suggestions for applicators:** For areas less than 30 sq. feet, an N-95 respirator, gloves and goggles/eye protection are recommended to avoid mold or mold spore exposure. For areas greater than 30 sq. feet, use an N-95 respirator or half-face respirator with HEPA filter, disposable overalls, gloves and goggles/eye protection.

**DEODORIZATION APPLICATIONS**

**DEODORIZING TREATMENT OF VENTILATION SYSTEMS:**

This product can be used as a deodorizer in ventilation systems to eliminate chemical, musty, unpleasant odors. Before applying the product, make sure the ventilation systems are turned off (disconnected) or set to recirculation. Remove all

loose soil and debris and clean all duct work by using a commercial duct cleaning system or service prior to deodorizing. Ensure all parts are mechanically sound, free of leaks, and other defects before and after treatment. Follow directions for use on the label. Do not exceed 500 ppm. Follow all precautionary and first aid instructions on package label.

**PRECAUTIONARY STATEMENTS**

**HAZARDS TO HUMANS AND DOMESTIC ANIMALS**

This product is designed to fully compartmentalize dry ingredients inside a patented pouch. Under normal conditions of use, and unless the sealed pouch is compromised, contact with the dry ingredients should not occur. However, if the sealed product is compromised and contact with dry ingredients is possible, please note the following hazard and safety information.

**DANGER:** Dry ingredients: Corrosive. Causes irreversible eye damage and skin burns. Wear protective eye wear such as goggles, face shield, or safety glasses and gloves. Harmful if swallowed. Avoid breathing vapors. Wash thoroughly with soap and water after handling and before eating, drinking, chewing gum, using tobacco or using the toilet. Remove and wash contaminated clothing before reuse.

**PHYSICAL OR CHEMICAL HAZARDS**

Pouch containing dry sodium chlorite is not compatible with any reducing agents, combustible materials, solvents, acids, paints or sulfur containing rubber. Keep activated solution away from heat, sparks and light. Chlorine dioxide gas can become concentrated in open area of pouch. Dilute activated solution in an open, well ventilated area.

**STORAGE AND DISPOSAL**

Do not contaminate water, food or feed by storage and disposal.

**Pesticide Storage:** store solution in dark, dry, protected, well-ventilated area, away from direct sunlight and where temperature will not exceed 122°F (50°C). Keep pouch containing dry ingredients in its original container and away from heat or open flame. Make sure the pouch cannot come into contact with water or acid or acid-based products.

**Pesticide Disposal:** to avoid waste, use all of the solution according to label directions. Do not dispose of pouch containing dry ingredients with food or water. In the event of a spill of dry ingredients, take steps to avoid runoff to come into contact with combustible materials, acidic solutions, skin or clothing. An unused pouch containing dry ingredients must be treated as toxic waste materials and must be disposed of in accord with federal, state and local regulations. Contact EPA, state or local environmental agencies for current disposal instructions. Discard empty packaging and spent pouch in an outdoor refuse container.

**Container Handling:** do not reuse or refill container holding solution except as allowed in the directions for use. Non-refillable pouch. Do not try to re-use or refill the pouch.

**FIRST AID**

**If in eyes.** Hold eye open and rinse slowly and gently with water for 15-20 minutes. Remove contact lenses, if present, after the first 5 minutes, then continue rinsing eye. Call a poison control center or doctor for treatment advice.

**If on skin or clothing.** Take off contaminated clothing. Rinse skin immediately with plenty of water for 15-20 minutes. Call a poison control center or doctor for treatment advice.

**If swallowed.** Call a poison control center or doctor immediately for treatment advice. Have person sip a glass of water if able to swallow. Do not induce vomiting unless told to do so by the poison control center or doctor. Do not give anything by mouth to an unconscious person.

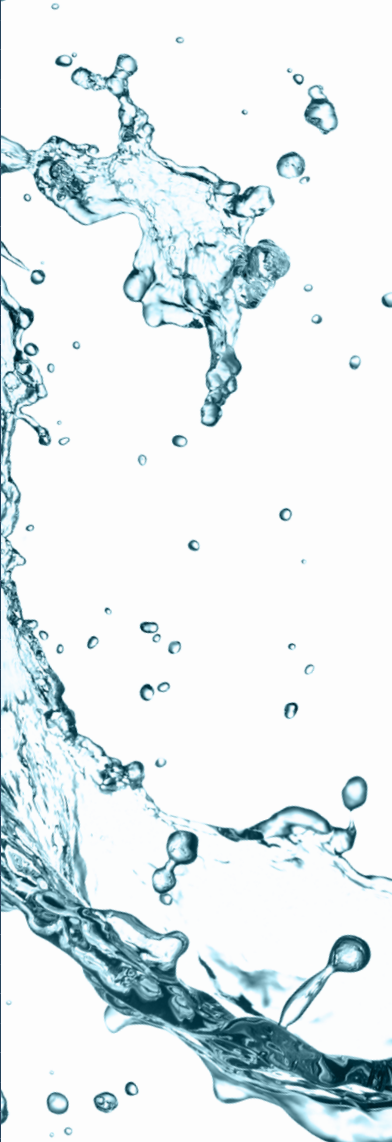
**If inhaled.** Remove victim to fresh air. If person is not breathing, call 911 or an ambulance, then give artificial respiration, preferably mouth-to-mouth if possible. Call a poison control center or doctor for treatment advice. Get medical attention.

Have the product container or label with you when calling poison control center, doctor or going for treatment. For emergency information concerning this product, call the National Pesticides information Center (NPIC) at 1-800-858-7378 seven days a week, 6:30am to 4:30pm Pacific Time (NPIC).

**Note to Physician:** Probable mucosal damage may contraindicate the use of gastric lavage.

## PERFORMACIDE IS PROVEN EFFECTIVE IN ELIMINATING AND KILLING 99.9% OF THESE PATHOGENS

TEST ORGANISM	CONTACT TIME	CONCENTRATION
<b>BACTERIA</b>		
E. Coli (ATCC 11229)	1 Minute	5 PPM
E. Coli (O157:H7) (ATCC 43895)	1 Minute	5 PPM
Klebsiella Pneumonia (ATCC 4352)	5 Minutes	20 PPM
Listeria Moncytogenes (ATCC19111)	10 Minutes	100 PPM
Methicillin Resistant S. Aureus (MRSA) (ATCC 33591)	10 Minutes	100 PPM
Mycobacterium Bovis (TB) (ATCC35737)	10 Minutes	100 PPM
Pseudomonas Aeruginas (ATCC15442)	10 Minutes	100 PPM
Salmonella Enterica (ATCC10708)	10 Minutes	100 PPM
Salmonella Typhimurium (MDRS) (ATCC 13311)	1 Minute	5 PPM
Staphlycoccus Aureus (ATCC6538)	10 Minutes	100 PPM
Vancomycin-Resistant Enterococcus Faecalis (ATCC 51299)	10 Minutes	100 PPM
<b>VIRUS</b>		
Adenovirus Type 5 (ATCC VR-5)	10 Minutes	100 PPM
Bordetella Bronchiseptica (Kennel Cough) (ATCC10580)	10 Minutes	100 PPM
Canine Distemper Virus	10 Minutes	100 PPM
Canine Parvovirus (ATCC VR-2017)	10 Minutes	100 PPM
Coronavirus (ATCC VR-740)	10 Minutes	100 PPM
Coronavirus (SARS CoV-2)	30 Seconds	100 PPM
Feline Calicivirus (ATCC VR-782)	10 Minutes	100 PPM
Feline Panleukopenia Virus (Feline Distemper) (ATCC VR-648)	10 Minutes	100 PPM
Hepatitis A (HM-175)	10 Minutes	100 PPM
Herpes Simplex-2 (ATCC VR-734)	10 Minutes	100 PPM
Human Immunodeficiency Virus Type 1 (HIV-1) (HTLV-III)	10 Minutes	100 PPM
Influenza-A Virus (ATCC VR-544)	10 Minutes	100 PPM
Norovirus (Feline Calici Used As Testing Surrogate) (ATCC VR-782)	10 Minutes	100 PPM
Poliovirus -1 (ATCC VR-1000)	10 Minutes	100 PPM
Rhinovirus Type 37 (ATCC VR-1147)	10 Minutes	100 PPM
Rotavirus (WA)	10 Minutes	100 PPM
Strain Snyder Hill, (ATCC VR-1587)	10 Minutes	100 PPM
Vaccinia Virus (ATCC VR-119)	10 Minutes	100 PPM
<b>ALGAE &amp; FUNGUS</b>		
Aspergillus Niger (ATCC 9642)	10 Minutes	100 PPM
Botrytis SP	10 Minutes	5 PPM
Candida Albicans (ATCC 10231)	10 Minutes	100 PPM
Fusarium Solani (ATCC 36031)	10 Minutes	100 PPM
Phormidium Boneri	10 Minutes	5 PPM
Penicillium Digitatum (ATCC 201167)	10 Minutes	5 PPM
Trichophyton iinterdigitale (athlete's foot) (ATCC 9533)	10 Minutes	100 PPM





Star brite®

# PERFORMACIDE®

DISINFECTANT • DEODORIZER

LEARN *more* AT  
[www.PERFORMACIDE.com](http://www.PERFORMACIDE.com)