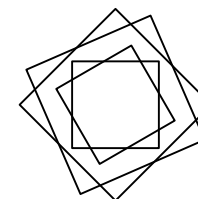
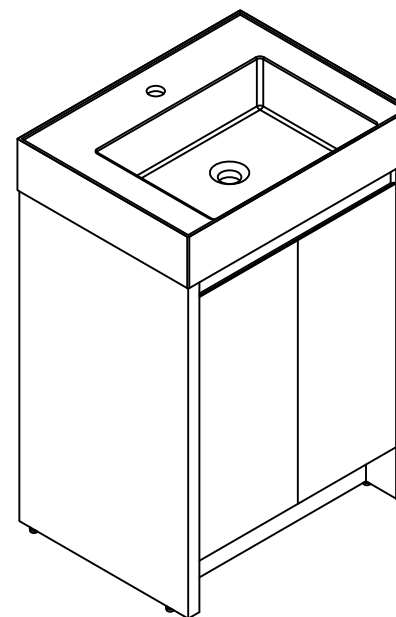


Installation Manual- BV B03624  
BV B03630

MOTIVATE  
YOUR LIFE !

## THANKS FOR WATCHING

Your feedback is invaluable to us and we would love to hear about your experience. Please take the time to leave us a review.


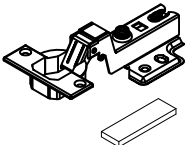
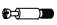












**Thank you for shopping with us!**

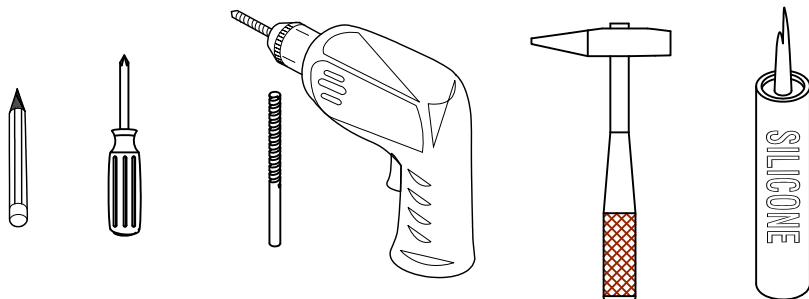
We encourage you to take a few minutes to go through this booklet. It contains important information on installation and care tips to keep your furniture looking as good as new.

# Item NO.:BV B03624 / BV B03630

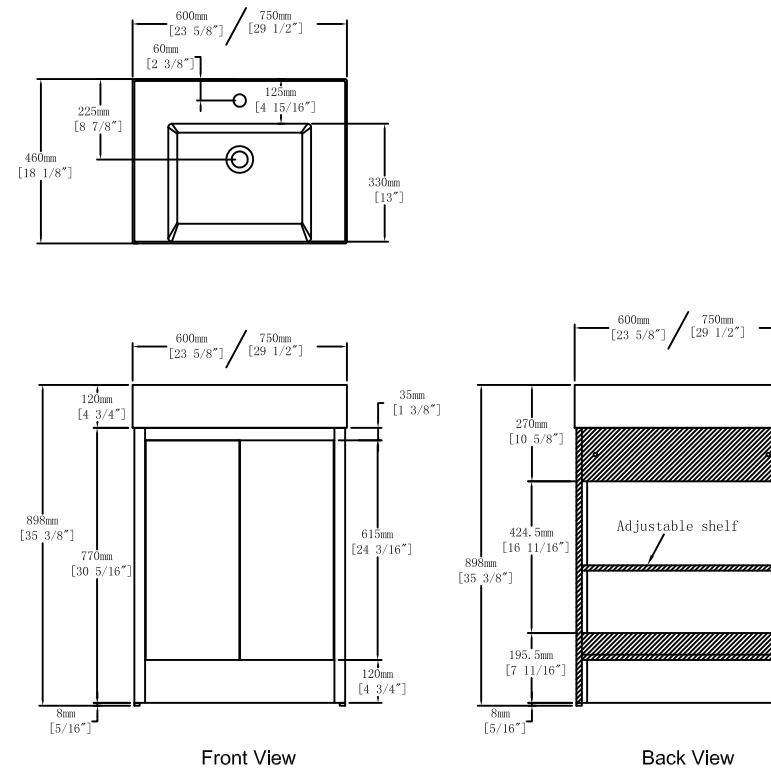
## Hardware

| NO. | Draw   | QTY | NO. | Draw   | QTY |
|-----|--|-----|-----|--|-----|
| A   |  Screws Ø4x14mm             | 44  | I   |  Hinges                   | 4   |
| B   |  Two-in-one connector       | 24  | J   |  Anti-collision gasket    | 4   |
| C   |  Two-in-one connector       | 24  | K   |  Movable laminate support | 4   |
| D   |  Wood plug                  | 4   | L   |  Adjustable feet          | 4   |
| E   |  Plastic anchor(Ø10mm)      | 2   | M   |  Screwdriver              | 1   |
| F   |  Screws for fix on the wall | 2   |     |  |     |
| G   |  Bracket (53x70x44mm)       | 2   |     |  |     |
| H   |  Bracket (19x19x35mm)       | 2   |     |  |     |

## Recommended tools



## Dimensions

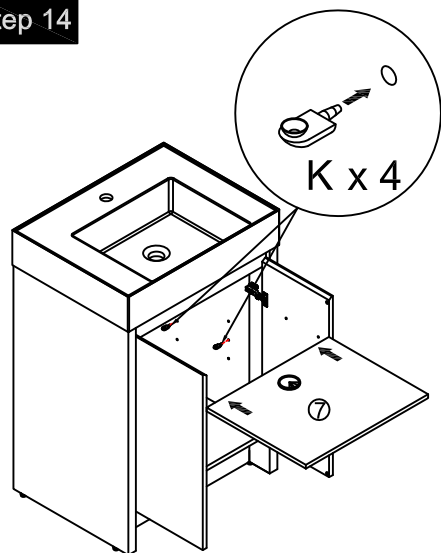


## CARE CLEANING AND MAINTENANCE

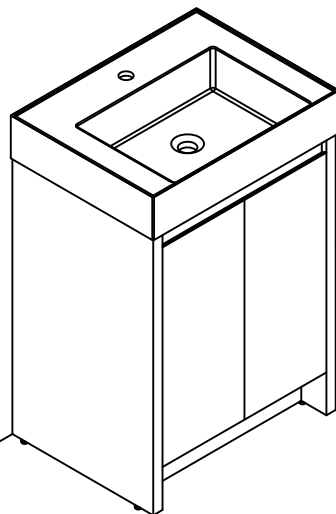
- 1.Dust regularly with a soft , dry cloth.
- 2.Avoid the use of all chemicals household cleaners, abrasives, or cleaners that contain lemon, vinegar, or other acids that may damage the finish.
- 3.Excessive exposure to sunlight and extreme changes in temperature and moisture can damage wood furniture.
- 4.The sink top is resilient, but care needs to be taken to preserve its appearance.
- 5.Do not place hot appliances, such as curling irons and hot hair dryers directly on the countertop. Wipe spills immediately.

## Step 14

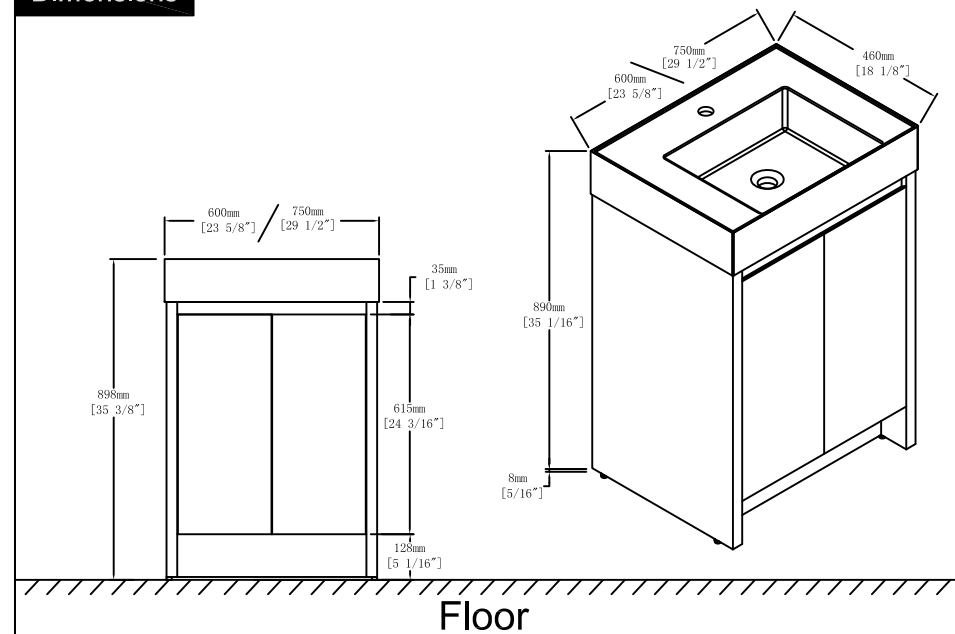
## Finished



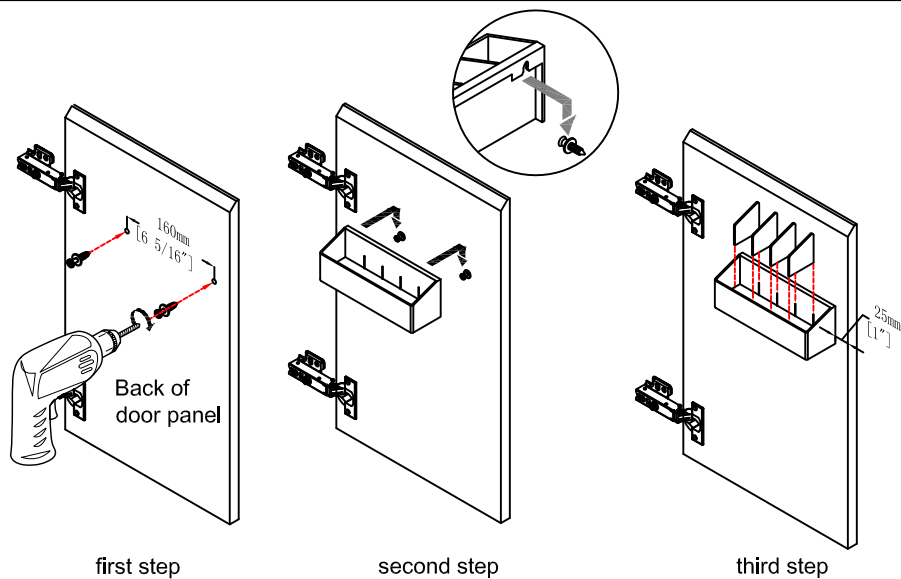
Notes:  
The installation position can be selected according to the required height.



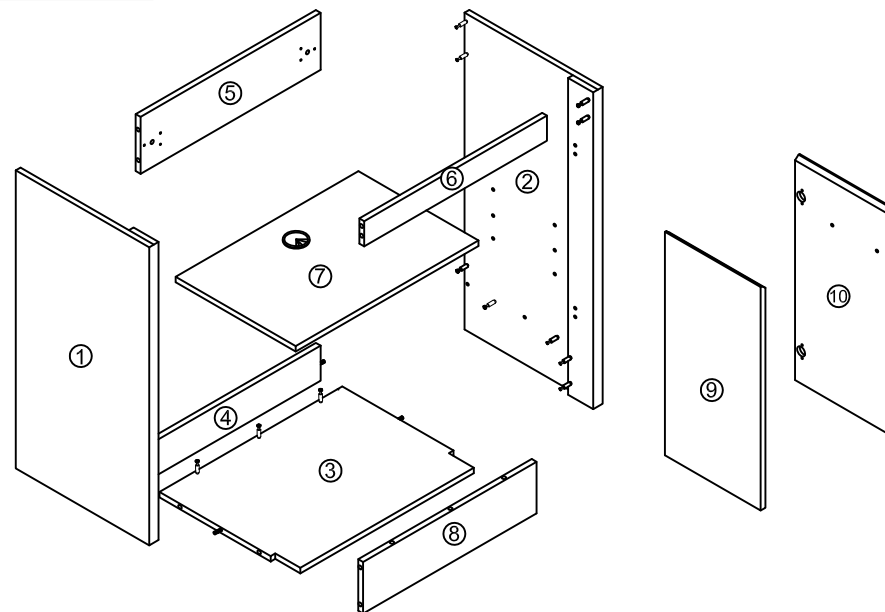
## Dimensions



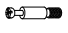

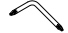
## Procedure for installing the plastic box

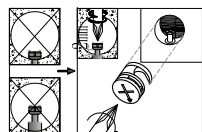
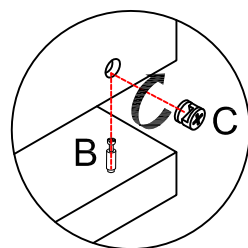
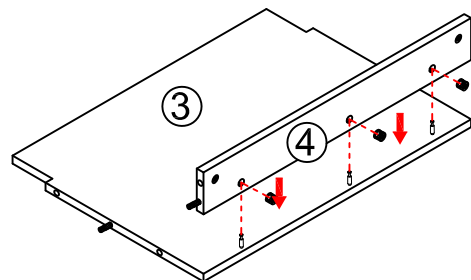


## Components



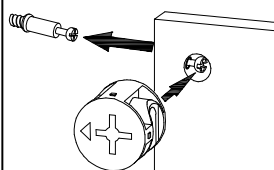
## Step 1

|  |    |
|--|----|
|  | x3 |
| B  |    |
|  | x3 |
| C  |    |
|  | x1 |
| M  |    |

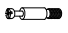




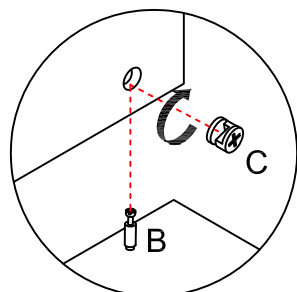
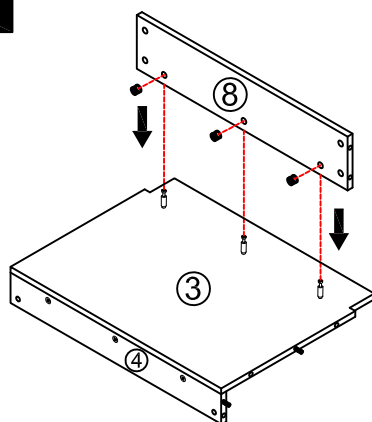
Notes: Screw installation depth as shown

Attention: The lock handle arrow points to the side face.



## Step 2

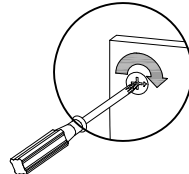
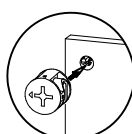
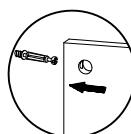
|  |    |
|--|----|
|    | x3 |
| B  |    |
|    | x3 |
| C  |    |
|  | x1 |
| M  |    |



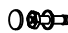

first step

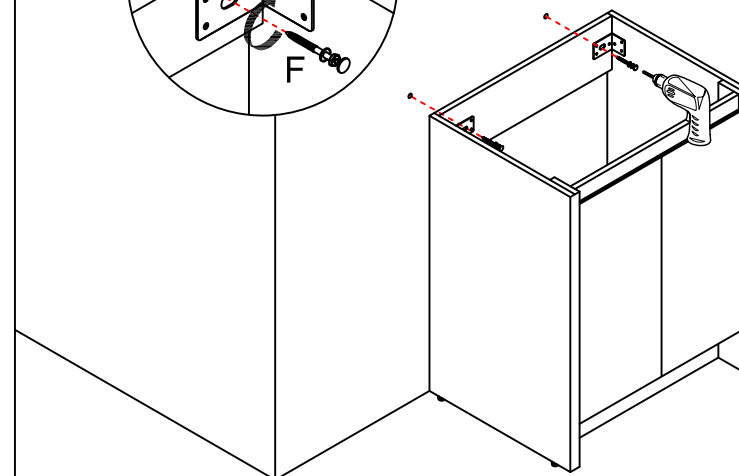
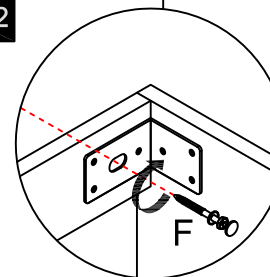
second step

third step

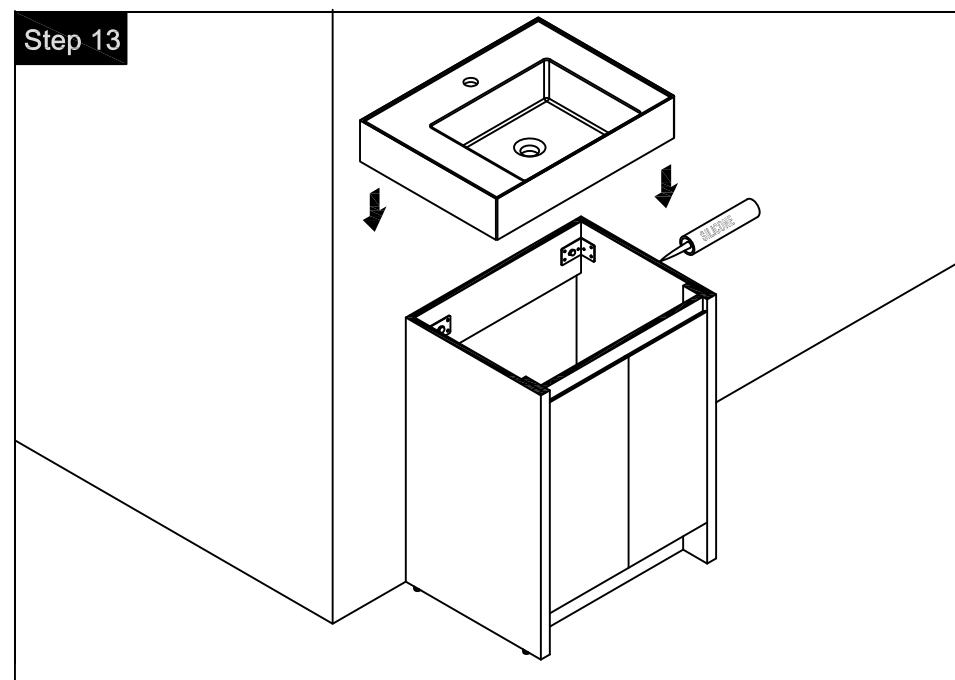


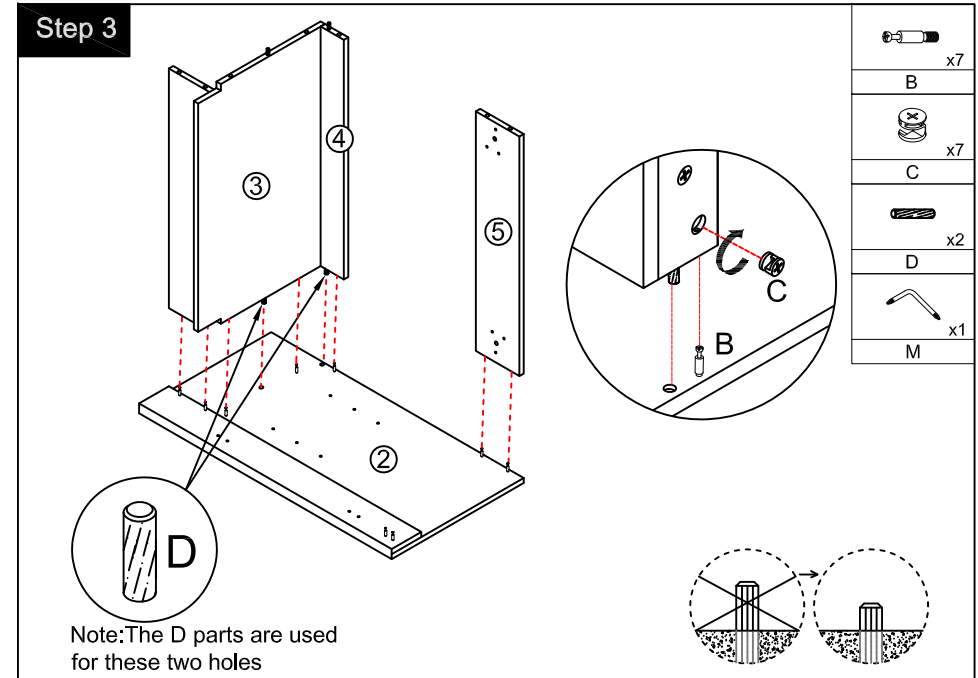
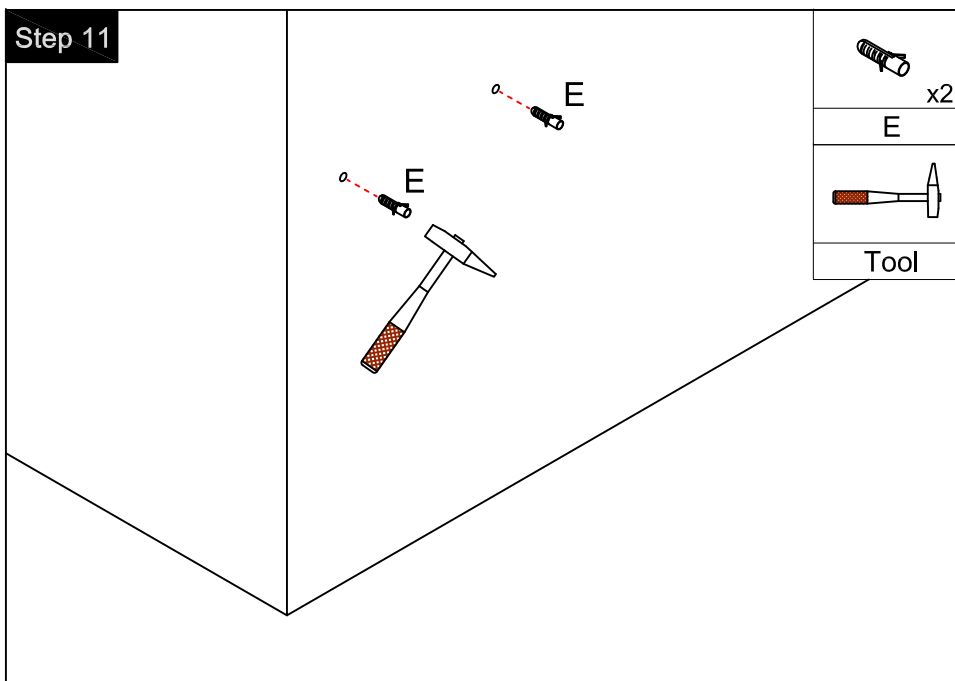
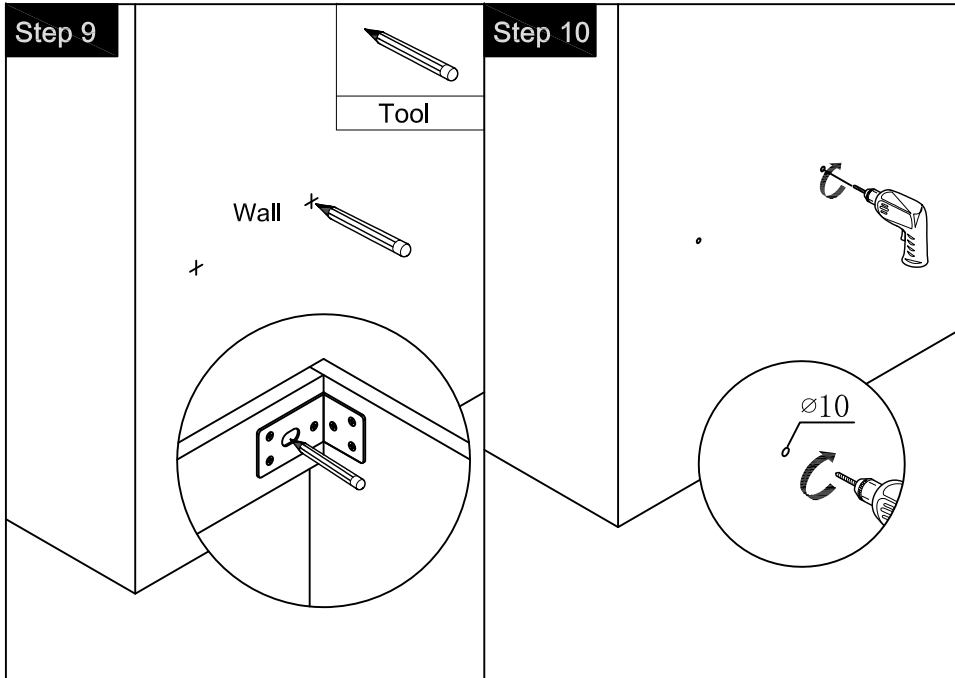
## Step 12

|   |    |
|---|----|
|  | x2 |
| F   |    |
|  |    |
| Tool  |    |

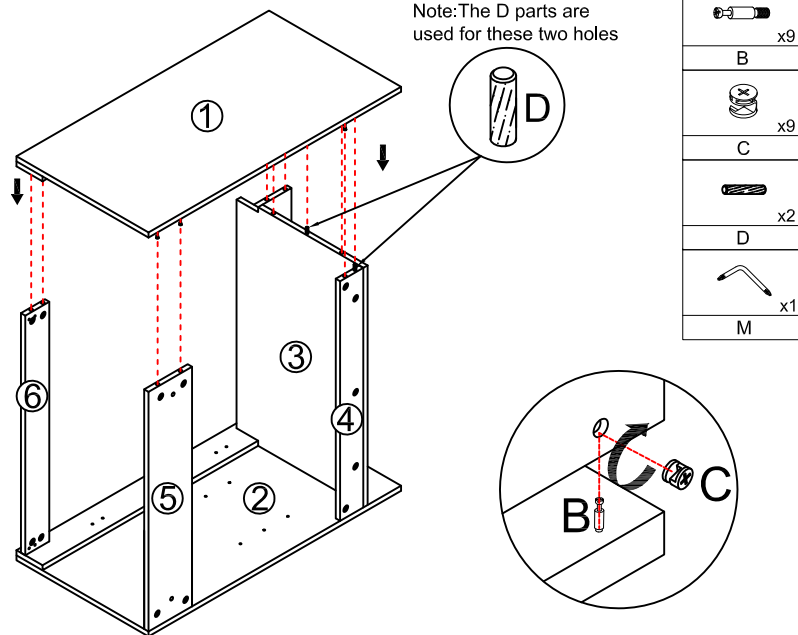


## Step 13

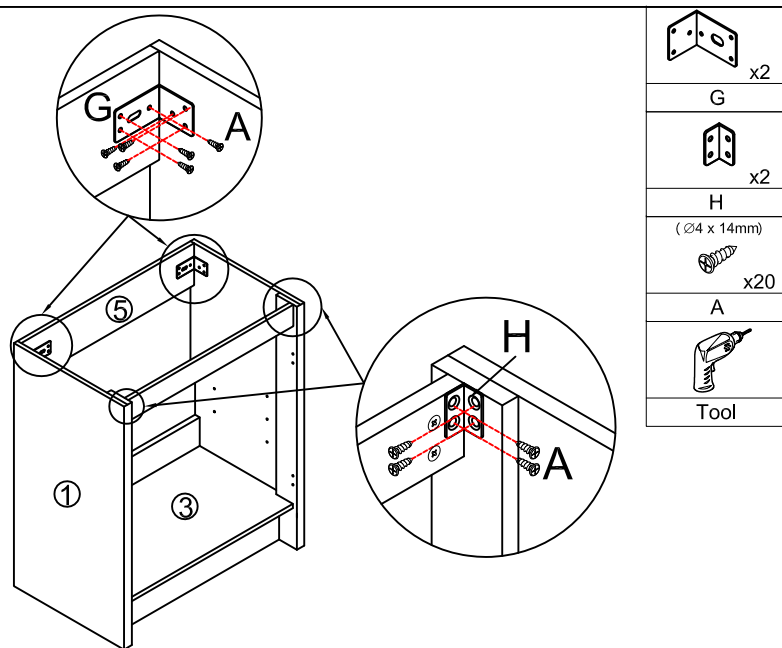




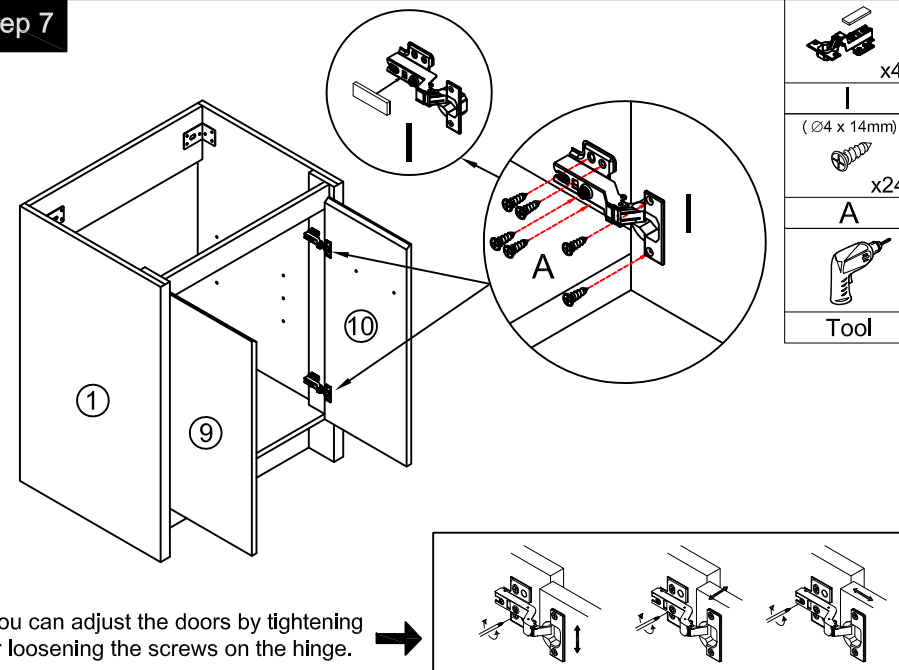
## Step 5



## Step 6



## Step 7



## Step 8

