

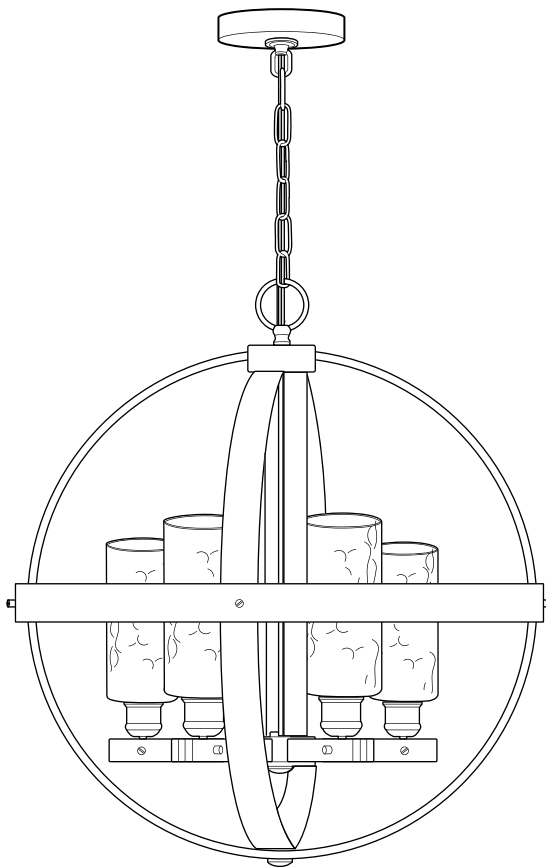
ITEM #1055720

# 4-LIGHT CHANDELIER

MODEL #CH18-4BZW

français p. 11

español p. 21



**ATTACH YOUR RECEIPT HERE**

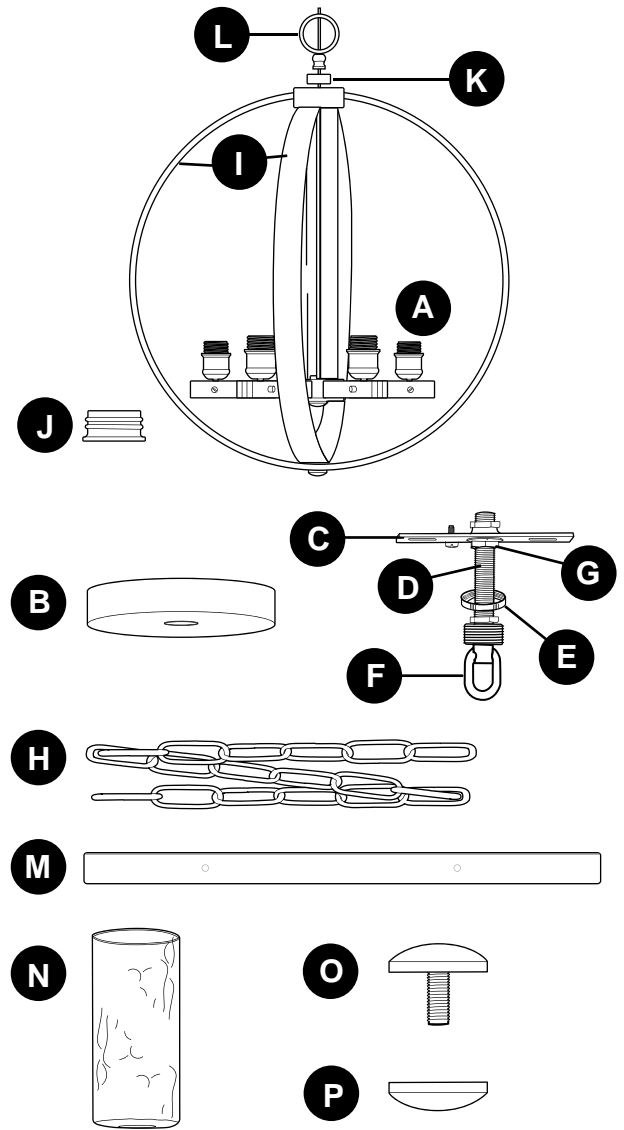
Serial Number \_\_\_\_\_ Purchase Date \_\_\_\_\_



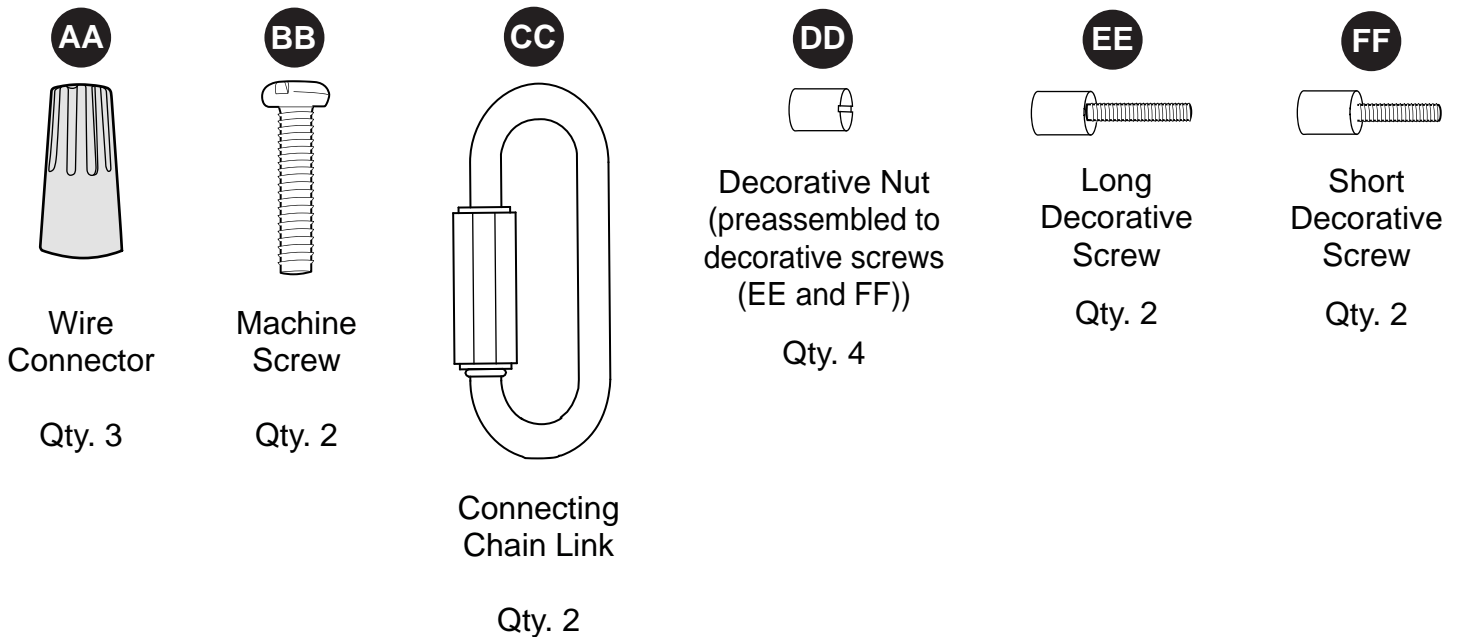
**Questions, problems, missing parts?** Before returning to your retailer, call our customer service department at **1-800-527-1292**, 8:30 a.m. - 5 p.m., CST, Monday - Friday.

## PACKAGE CONTENTS

PART	DESCRIPTION	QUANTITY
A	Fixture	1
B	Canopy	1
C	Mounting Strap	1
D	Threaded Rod (preassembled to Mounting Strap (C))	1
E	Threaded Ring (preassembled to Threaded Rod (D))	1
F	Screw Collar Loop (preassembled to Threaded Rod (D))	1
G	Hex Nut (preassembled to Threaded Rod (D))	2
H	Chain	1
I	Adjustable Metal Band (preassembled to Fixture (A))	2
J	Socket Ring (preassembled to Fixture (A))	6
K	Small Metal Ring (preassembled to Fixture (A))	1
L	Fixture Loop (preassembled to Fixture (A))	1
M	Outer Metal Band	1
N	Glass Shade	4
O	Finial Screw (preassembled to Adjustable Metal Bands (I))	1
P	Finial (preassembled to Finial Screw (O))	1



## HARDWARE CONTENTS (shown actual size)



## SAFETY INFORMATION

---

### READ AND SAVE THESE INSTRUCTIONS.

#### DANGER

- For your protection and safety, carefully read and understand the information provided in this manual completely before attempting to assemble, install or operate this product. Failure to do so could lead to electrical shock, fire or other injuries that could be hazardous or even fatal.
- DO NOT connect this fixture to an electrical system that does not provide a means for equipment grounding. Never use a fixture in a two-wire system that is not grounded. Installing a fixture into an electrical system not having a proper grounding means could cause metal parts of the fixture to carry electrical currents if any of the fixture wires, wire connections or splices were to become broken, cut or loose during the mounting or normal operation of the fixture. Under this condition, anyone coming in contact with the fixture would be subject to electrical shock, which could cause serious injury or death.
- DO NOT connect the bare or green insulation fixture ground wire to the black (HOT) current-carrying wire or the white neutral house wire. Connection of the bare or green fixture ground wire to the black or white house wires may cause metal parts of the fixture to carry electrical currents. Under this condition anyone coming in contact with the fixture will receive electrical shock, which could cause serious injury or death.
- DO NOT damage or cut the wire insulation (covering) during installation of fixture. DO NOT permit wires to contact any surface having a sharp edge. To do so may damage or cut the wire insulation, which could cause serious injury or death from electrical shock.

#### WARNING

- All electrical connections must be in agreement with local codes and ordinances, the National Electric Code (NEC) and ANSI/NFPA 70-1999. Contact your municipal building department to learn about your local codes, permits and/or inspections. Risk of fire - most dwellings built before 1985 have supply wire rated for 140°F. Consult a qualified electrician before installation.
- To avoid personal injury, the use of gloves may be necessary while handling fixture parts with sharp edges.
- DO NOT suspend any fixture by the house wires. A fixture must always be mounted directly to an outlet box or to a mounting strap which is first attached to the outlet box. Wire connectors will not support the weight of a fixture. Suspending a fixture by the house wires and wire connectors will result in the fixture falling, with the possibility of personal injury and the danger of electrical shock or fire.
- To reduce the risk of fire, electrical shock or personal injury, wire connectors provided with this light fixture are designed to accept only one 12-gauge house wire and two lead wires from the light fixture. If your house wire is larger than 12-gauge or there is more than one house wire to connect to the corresponding fixture lead wires, consult an electrician for the proper size wire connectors to use.

#### CAUTION

- TURN OFF ELECTRICITY at circuit breaker box before beginning installation by switching the circuit breaker off.
- If you are not sure the lighting system has a grounding means, DO NOT attempt to install this fixture. Contact a qualified, licensed electrician for information regarding the proper grounding methods as required by the local electrical code in your area.
- All fixtures must be mounted to an outlet box that is supported by the building structure.
- DO NOT use bulbs having a wattage greater than the maximum value stated on the fixture. The use of bulbs with higher wattage than specified will increase temperatures and risk of fire.
- If a dimmer control switch is used with this fixture, obtain professional advice to determine the correct type to use as well as the electrical rating required.

## PREPARATION

Before beginning assembly of product, make sure all parts are present. Compare parts with package contents list and hardware contents list. If any part is missing or damaged, do not attempt to assemble the product.

**Estimated Assembly Time: 45 minutes**

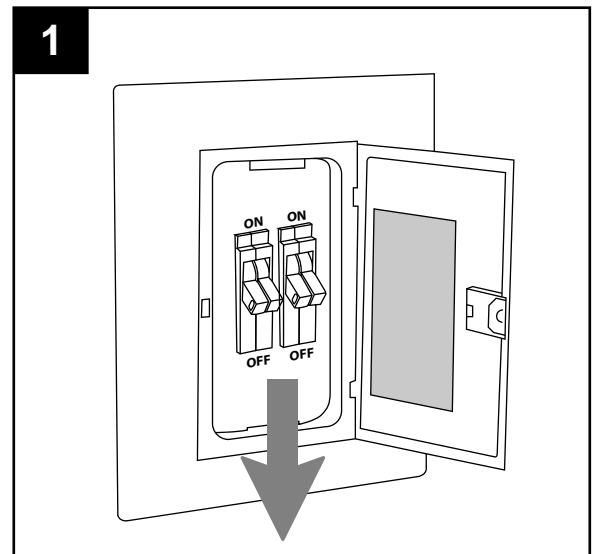
Tools Required for Assembly (not included): Flathead Screwdriver, Phillips Screwdriver, Wire Strippers, Pliers, Wire Cutters, Safety Glasses, Stepladder, Electrical Tape

Helpful Tools (not included): A/C Tester Light, Do-It-Yourself Guide, Soft Cloth

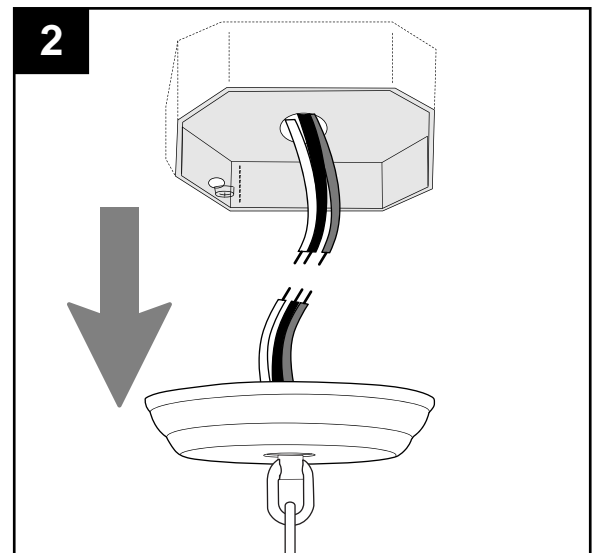
## ASSEMBLY INSTRUCTIONS

1. Turn off circuit breakers and wall switch to the fixture supply line leads.

**⚠ DANGER:** Failure to disconnect power supply prior to installation may result in serious injury or death.



2. Remove existing fixture and disconnect all electrical wiring.



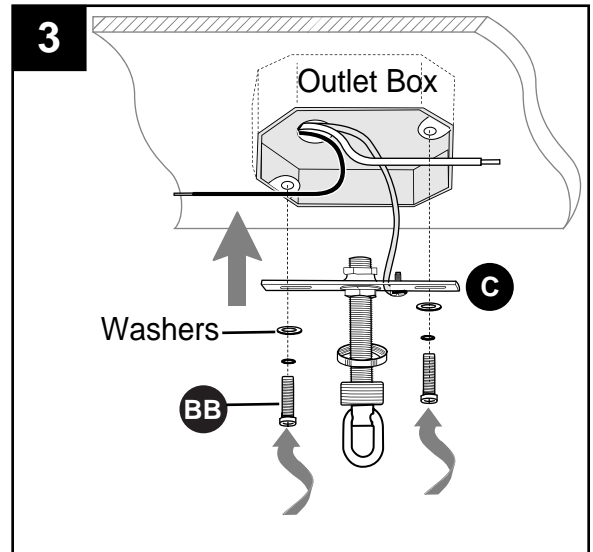
## ASSEMBLY INSTRUCTIONS

3. Attach mounting strap (C) to outlet box (not included) using existing washers and outlet box screws or the machine screws (BB). **NOTE:** If the outlet box screws required for your outlet box are of a different size than the machine screws (BB), consult a licensed electrician before proceeding.

**⚠ CAUTION:** Make sure the outlet box can support 35 lbs. hanging weight. Use *metal* outlet box; plastic outlet boxes are not recommended.

### Hardware Used

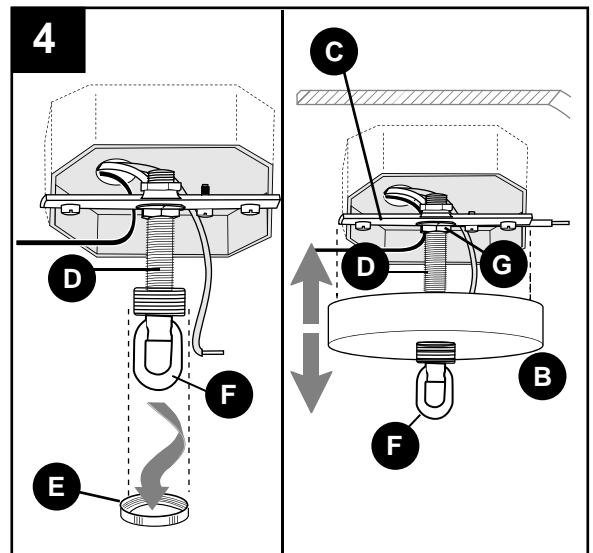
**BB** Machine Screw  x 2



4. Remove threaded ring (E) from screw collar loop (F) and save for later use.

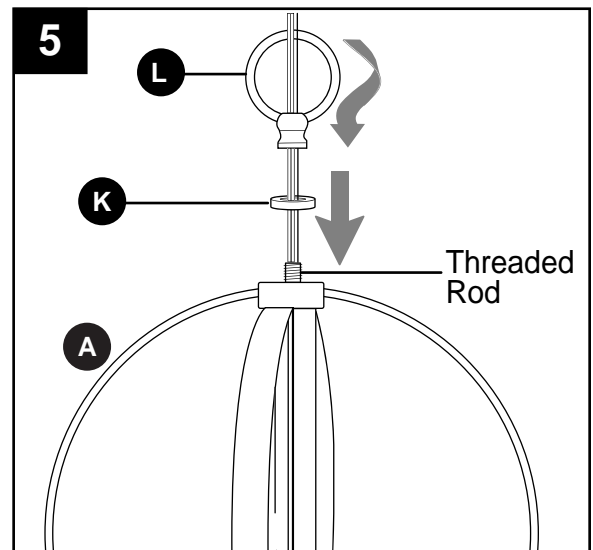
**Temporarily** place canopy (B) over mounting strap (C) to determine amount of adjustment necessary for threaded rod (D). **NOTE:** Canopy (B) should fit flush against ceiling when mounted. Once threaded rod (D) is adjusted, tighten hex nut (G) securely against mounting strap (C).

Set canopy (B) aside.



5. Slide small metal ring (K) down wiring to threaded rod at top of fixture (A). Small metal ring (K) should slide over the threaded rod until it touches the top of the fixture (A).

Slide fixture loop (L) down wiring to threaded rod. Turn fixture loop (L) clockwise until it no longer turns.

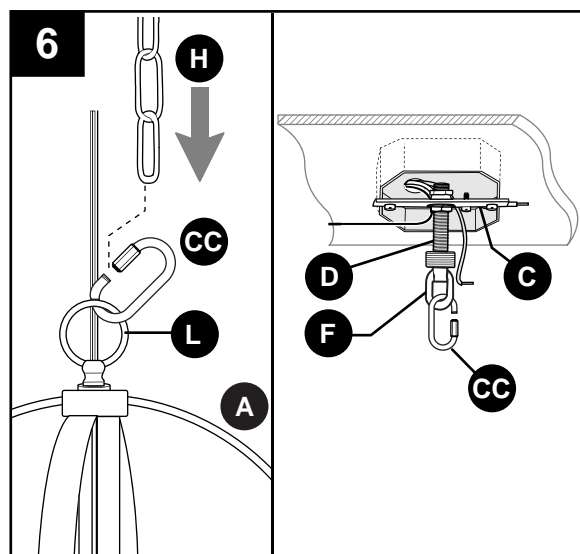
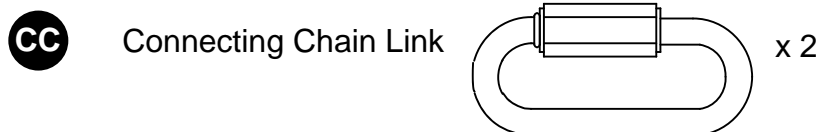


## ASSEMBLY INSTRUCTIONS

- Locate connecting chain links (CC) in hardware pack and open both of them. Attach one connecting chain link (CC) to fixture loop (L) at the top of the fixture (A) and then attach one end of the chain (H) to the connecting chain link (CC). Close this connecting chain link (CC).

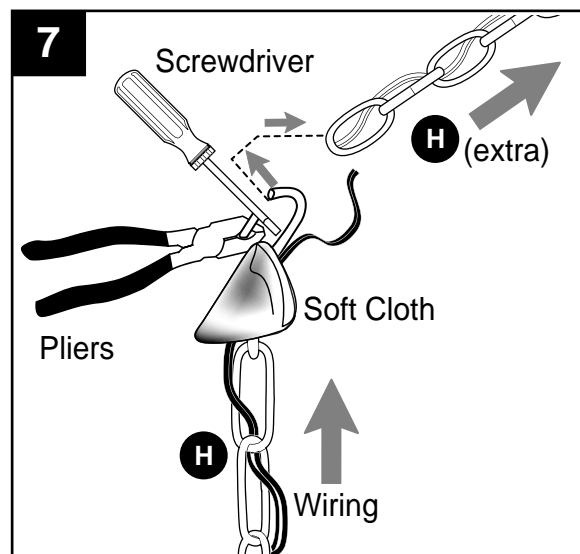
Hook the other connecting chain link (CC) to the screw collar loop (F) at the bottom of threaded rod (D) on mounting strap (C)--leave this connecting chain link (CC) open for now.

### Hardware Used



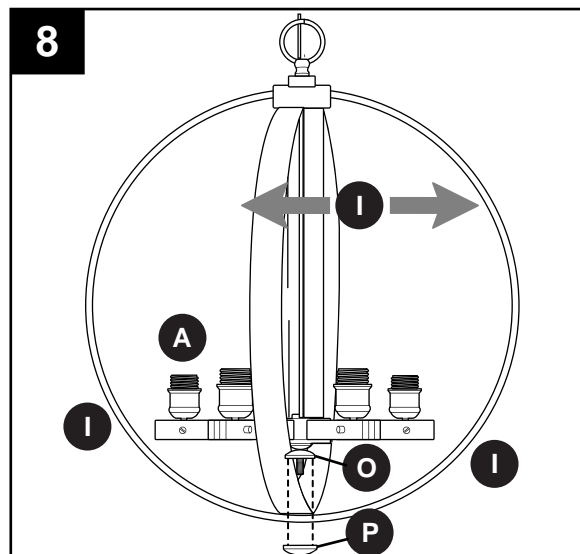
- Determine the hanging length for fixture (A). If you will be using the chain as is, please skip to the next paragraph in this step. If you wish to shorten chain, use pliers, a flathead screwdriver and a soft cloth (none included) to open the link of chain (H) at length chosen. Remove any extra chain (H) at this time, including the link that was opened to shorten the chain.

Feed wiring from fixture (A) up through chain (H) to pre-determined length.



- Remove finial (P) and finial screw (O) at bottom of adjustable metal bands (I).

Separate adjustable metal bands (I) on fixture (A) and pull apart until they are evenly spread. Align holes at bottom of adjustable metal bands (I) and then re-insert finial screw (O) through **both** adjustable metal bands (I). Secure with finial (P) on the underside.



## ASSEMBLY INSTRUCTIONS

9. Place outer metal band (M) under fixture (A) and raise to the middle of the adjustable metal bands (I), aligning four holes in outer metal band (M) with the two holes in each of the adjustable metal bands (I). Secure outer metal band (M) with decorative nuts (DD) and decorative screws (EE and FF).

**NOTE:** Use the long decorative screws (EE) for the **innermost** adjustable metal band (I) and use the short decorative screws (FF) for the other adjustable metal band (I).

It is recommended to insert the decorative screws (EE and FF) by starting from the outside of the outer metal band (M) *toward* the middle of the fixture (A) so the decorative nuts (DD) can be attached from the *inside*.

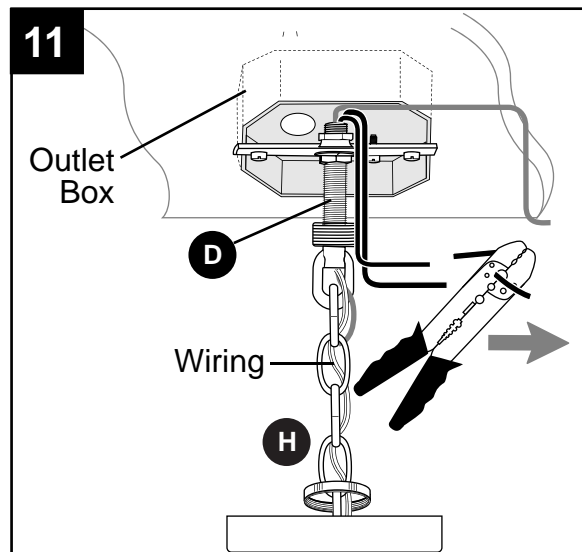
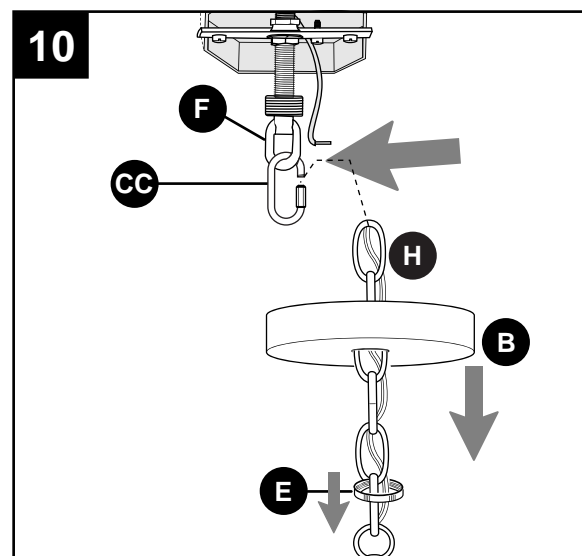
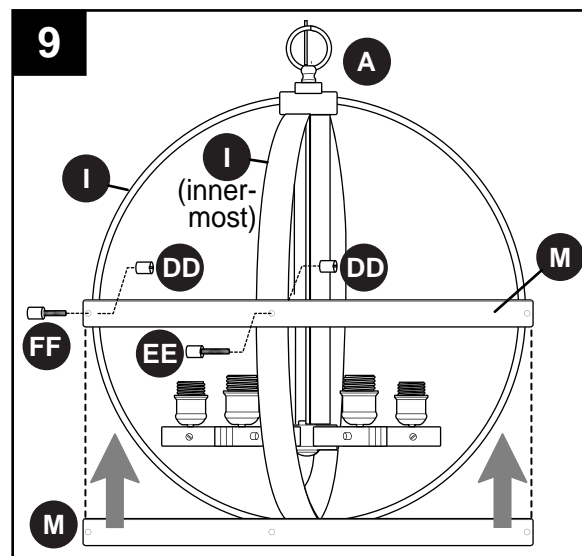
**! CAUTION:** Make sure all decorative nuts (DD) are securely tightened.

10. Feed chain (H) and wiring through threaded ring (E) and then canopy (B), allowing threaded ring (E) and canopy (B) to slide down chain (H) until they reach the top of the fixture (A).

Lift chain (H) toward screw collar loop (F) and hang chain (H) on connecting chain link (CC). Close connecting chain link (CC).

11. Feed wiring up through hole at bottom of threaded rod (D). Gently push wiring until it comes through top of threaded rod (D). Pull all wiring until there is no extra slack left in the wires running through the chain (H).

Prepare wires from outlet box by stripping 3/4 in. of insulation from wire ends using wire strippers (not included).



## ASSEMBLY INSTRUCTIONS

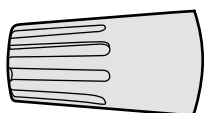
12. Connect SMOOTH wire from fixture (A) to the BLACK wire from outlet box using wire connector (AA). Connect RIBBED wire from fixture (A) to the WHITE wire from outlet box using wire connector (AA). Connect BARE/GREEN wire from outlet box to BARE ground wire from fixture (A) using wire connector (AA).

**NOTE:** If outlet box does not have a BARE/GREEN wire, the BARE ground wire from fixture (A) should be attached to the GREEN GROUND SCREW (labeled GND) on mounting strap (C).

### Hardware Used

AA

Wire Connector



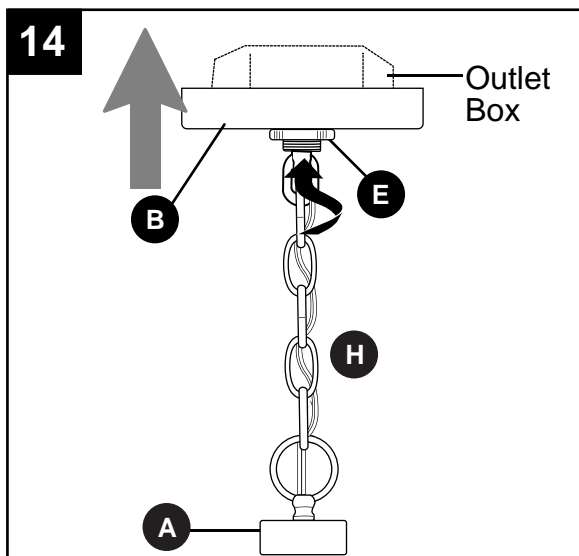
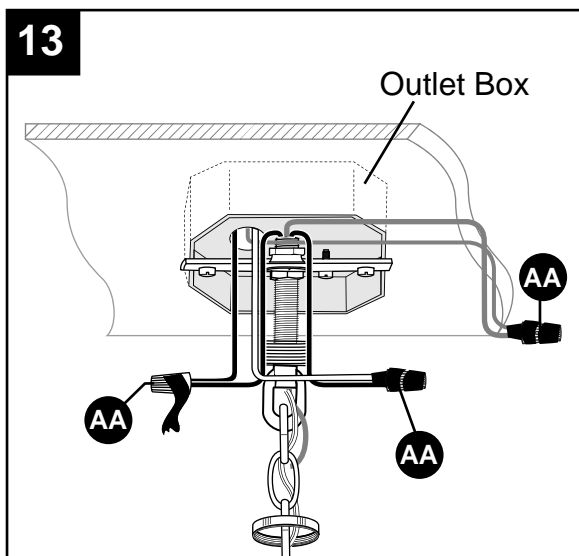
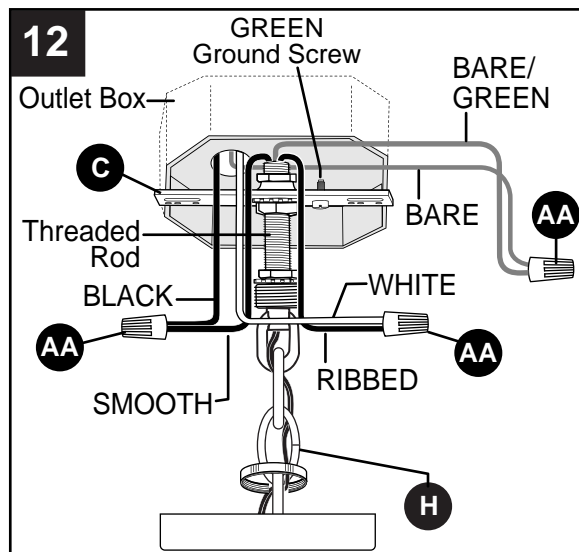
x 3

13. Wrap electrical tape (not included) around each individual wire connector (AA) down to the wire.

**⚠ WARNING:** Make sure no bare wire or wire strands are visible after making connections.

Carefully arrange excess wiring and wire connectors (AA) within outlet box.

14. Slide canopy (B) and threaded ring (E) up the chain (H) to the outlet box. Secure canopy (B) by tightening the threaded ring (E).

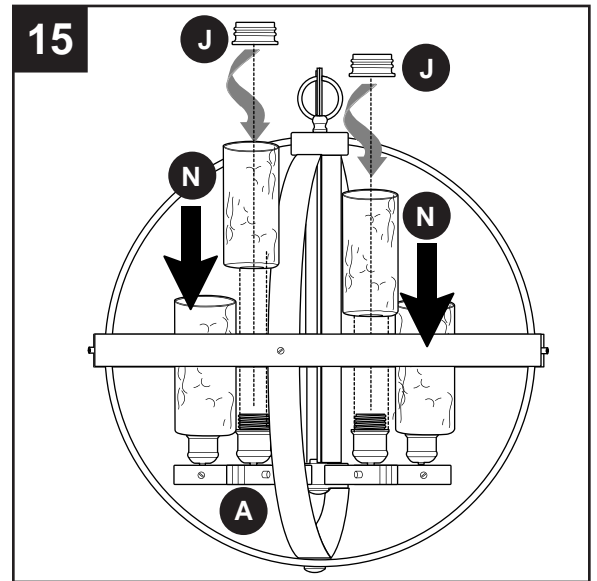




## ASSEMBLY INSTRUCTIONS

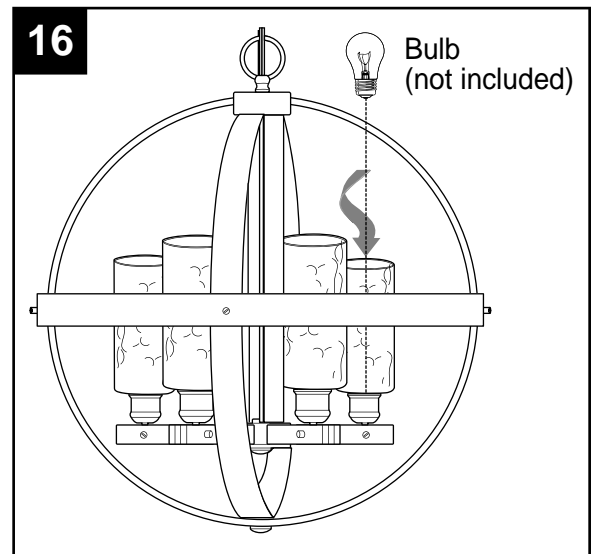
15. Remove socket rings (J) from sockets of fixture (A). Attach glass shades (N) to sockets, securing with socket rings (J).

**⚠ WARNING:** Do not overtighten socket rings (J) as glass may crack or break.



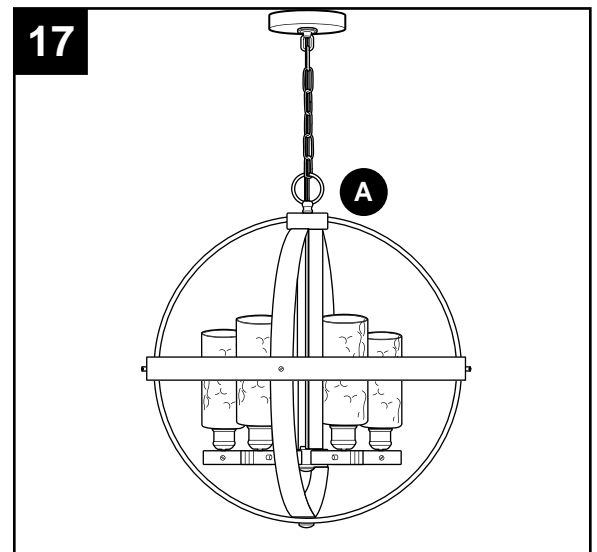
16. Install four 60-watt max. standard-base incandescent bulbs (not included) or CFL/LED equivalent.

**⚠ WARNING:** When replacing bulbs, allow bulbs, glass shades and fixture to cool down before touching.



17. Restore power and test fixture (A).

If lights do not function, please refer to TROUBLESHOOTING on the following page.



## CARE AND MAINTENANCE

---

- Shut off main power supply. Wipe fixture with soft, damp cloth. Use window cleaner to clean glass. Do not use an abrasive cleaner on glass or fixture.

## TROUBLESHOOTING

---

**⚠ WARNING:** Before beginning work, shut off the power supply to avoid electrical shock.

PROBLEM	POSSIBLE CAUSE	CORRECTIVE ACTION
Bulb(s) will not light.	1. Bulb(s) is/are burned out. 2. Power is OFF. 3. Faulty connection.	1. Replace light bulb(s). 2. Make sure power supply is ON. 3. Check wiring and all connections.
Fuse blows out or circuit breaker trips.	1. Crossed wires. 2. Power wire is grounding out.	1. Check wiring. 2. Check all connections.

## WARRANTY

---

The distributor warrants all of its lighting fixtures against defects in materials and workmanship for one (1) year from the date of purchase. If within this period the product is found to be defective, take a copy of the bill of sale as a proof of purchase and the product in its original carton to the place of purchase. The distributor will, at its option, repair, replace or refund the purchase price to the consumer. All costs of installation and removal of the fixture is the responsibility of the consumer. This warranty does not cover fixtures becoming defective due to misuse, accidental damage or improper handling and/or installation and specifically excludes liability for direct, incidental or consequential damages. As some states do not allow exclusions of limitations on an implied warranty, the above exclusion and limitation may not apply. This warranty gives you specific rights and you may also have other rights which may vary from state to state.