

GAMA SONIC®

SOLAR LIGHTING



BAYTOWN BULB SOLAR LAMP

Part #: 106B033, 106B133



Please read the instruction manual carefully to obtain the best results from your purchase.

Thank you for your purchase. GAMA SONIC® solar charged lights are brighter and last all night with a full day solar charge. Unique design, superior light output and numerous installation options confirm the outstanding value of our product.

GAMA SONIC® has been recognized as a worldwide leader in the lighting industry for over 20 years. The company also offers unique multi-purpose rechargeable products that range from party lights to emergency lighting products.

For technical Assistance/Warranty Claims/Replacement Parts
Toll Free Number: +1-800-835-4113 (only within the US),
Email: productsupport@gamasonic.com

visit our website or download the latest version of your instruction manual:
www.gamasonic.com Or **www.gamasonic.com/user-guides**

Tools that are needed but not supplied with the solar post lamps are:
a screw driver, power drill.

Solar Light Location

For optimum light duration throughout the night, it is very important to place your solar lamp in a spot where it will receive the maximum amount of direct sunlight throughout the day.

NOTE: For best results, the solar lamp must be charged for two sunny days in the ON position.

Operation Instructions

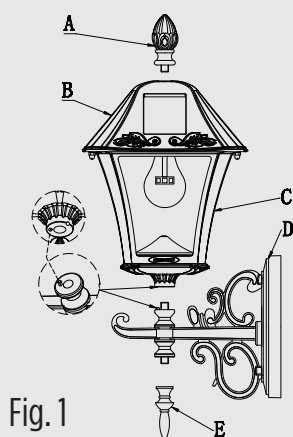


Fig. 1

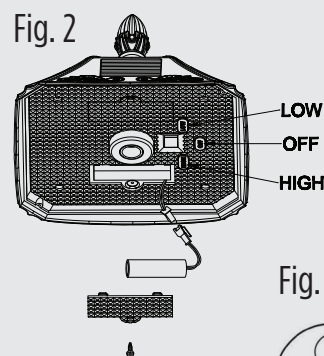
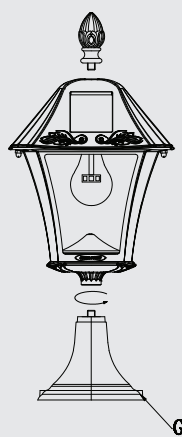
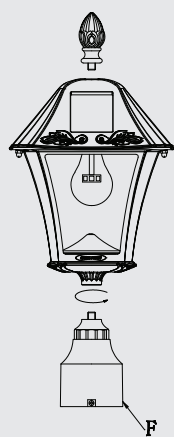
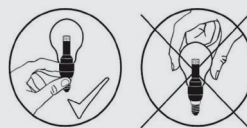


Fig. 2

Fig. 3



1. Remove the Top (B) from Body part (C) by unscrewing the 2 screw caps. Install the new GS Solar LED Light Bulb by turning it into the bulb socket located at the top of the light clockwise. Bulb needs to be installed before lamp is turned on.

NOTE: When installing the GS Solar LED Bulb, hold it from its silver base not by the glass (Fig.3)

2. Turn the operation switch (Fig. 2) to either High or Low position according your preferences. The Solar Lamp will automatically operate dusk to dawn.
3. Reattach the Top part (B) to the Body part (C) and secure with the 2 screw caps.

Installation Instructions

NOTE: There are specific types of screws for specific surfaces. If unsure of the appropriate type of screw to use on your desired surface please consult a professional.

Pier Mount

1. Using the base as a template, use a drill to make two holes in the desired surface
2. Place the white screw anchors into the holes, place the lamp in line with the holes and secure with the provided screws.
3. Screw in part G into part C as shown in Fig. 1.

Wall Mount

NOTE: For best results, place your lamp in a spot facing south.

1. Remove the silver bracket by removing the 2 screw caps on the front face of the wall mount.

2. Screw the silver bracket onto the desired surface.
3. Place wall mount onto bracket and replace 2 wall mount screw caps.
4. Slide part E through Part D as shown in Fig. 1.
5. Attach Part C to Part D by turning part E clockwise.

3" Fitter Mount

NOTE: If you are replacing an existing gas/electric post light, you must consult a certified technician to cancel them before installation.

1. Screw part F into part C as shown in Fig. 1.
2. Position Part (F) on top of the existing 3" post and tighten it using the screws provided. Tighten the 3 set screws - do not over-tighten.



Replacing the Batteries

GAMA SONIC®
SOLAR LIGHTING

After several years of use, the batteries may need replacing.

1. Unscrew the two screw caps and detach part (B) from part (C). Make sure the ON/OFF switch is in the OFF (O) position.
2. Unscrew the battery compartment screw, (Fig. 2) located on the silver reflector and remove the compartment door.
3. Unclip the connector and remove the old battery. Make sure the new battery (GS32V15) is high quality 3.2V/1,500mAh Lithium-ion Rechargeable battery with connector.
4. Clip on new battery and install into the battery compartment. Screw back battery compartment screw.
5. Reattach part (B) to part (C) and secure with the 2 screw caps.

**** Batteries are available for purchase at www.gamasonic.com**

WARNING: Do not dispose of Li-Ion battery in the regular trash, municipal waste stream or by fire as batteries may leak or explode. Do not open, short circuit, or mutilate batteries as injury may occur. Preserve our environment by recycling Li-Ion batteries or disposing of them in accordance with local, State and federal regulations. Do not mix old and new batteries.

Maintenance

Clean the solar panels regularly with a damp towel to guarantee optimum performance. Do not use any type of solvent for cleaning and be careful not to put too much pressure on the solar panels while cleaning.

Trouble Shooting

If your solar charged light does not come on at dusk despite observance of all the instructions, please try the following steps:

1. Make sure that the solar light is not being affected by any other light source.
2. Ensure the solar light is not positioned in the shade during the day.
3. Make sure the switch in the lamp head is in the "ON" position.
4. Check that the batteries are installed correctly.

NOTE: The performance of the solar light will vary with the time of year. It will deliver more light when it has had a full day in the sun rather than a day in overcast weather.



WINTERTIME TIPS: For optimal performance, be sure to remove any snow or debris accumulation from the solar panel. A solar panel free of debris will charge the batteries much more efficiently.

WARNING: Please keep out of reach of children.

