

# PROTECT

by LeakSmart®

Protect Shut-off Valve System  
User Manual



## START HERE:



Scan QR code now to download  
the LeakSmart app setup your new system.

Follow the instructions in the app to setup your  
new sensor. Use this guide for any questions

Table of Contents

Installation Overview:

In the Box..... 4

Setup Requirements.....6

Important Installation Information.....7

Section I:

LeakSmart Hub 3.0 Pre-Installation Customer Setup  
Requirements.....9

Section II:

LeakSmart Hub 3.0 Installation.....10

Connect the Hub to the Home Wi-Fi Network.....12

Performing a Factory Reset.....15

Protect by LeakSmart Setup.....16

Pair the Protect by LeakSmart to the Hub 3.0.....18

Test Local and Remote Control of the Valve Control Head.....20

Table of Contents

Section III:

Protect by LeakSmart Flow Meter Shut-Off Valve Installation .....22

Pre-Installation Assembly.....22

Installation Assembly.....24

Protect by LeakSmart Validation.....30

Section IV:

Sensor Setup and Operation.....32

Temperature & Humidity Settings & Alerts.....36

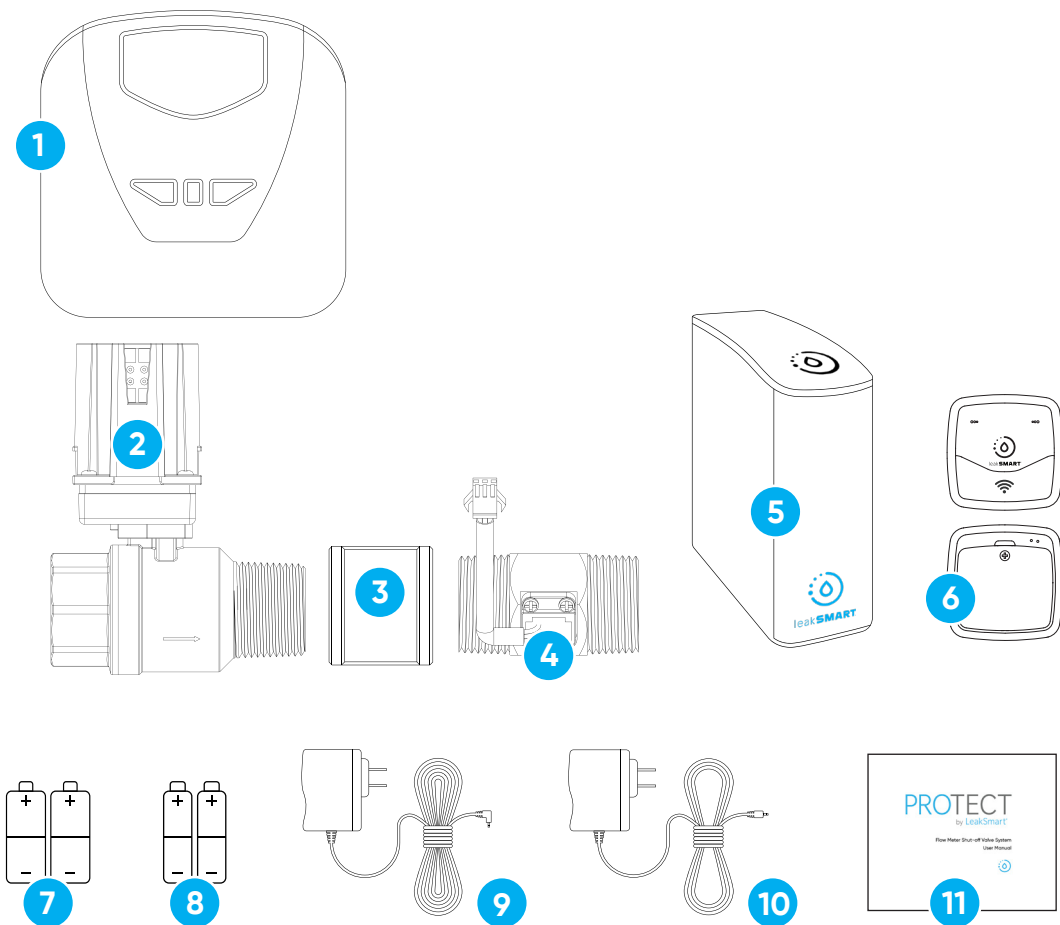
Protect/Detect Settings & Alerts.....37

Alert Setup.....38

Adding Alert Contacts.....38

Test Leak Simulation.....39

Clearing Test Leaks.....39



## In the Box:

- 1 Valve Control Head
- 2 Shut-off Valve
- 3 Coupling\*
- 4 Flow Meter\*
- 5 Hub 3.0\*
- 6 Sensors (3)\*
- 7 AA Batteries (10)
- 8 Valve Control Head AC Power Adapter (18' reach)
- 9 Hub AC Power Adapter (6' reach)
- 10 Setup Manual

\*These items may be sold separately

## Not Pictured:

Hub 3.0 Lithium Battery (Pre-installed)



**Note:** Additional fittings may be required based on installation requirements.

Encuentra nuestro manual en español en [LeakSmart.com/support/manuals/](https://LeakSmart.com/support/manuals/)

## Setup Requirements



**Professional installation recommended.**

**5-year LeakSmart warranty** when purchased and installed by a professional. All other purchases and installations include a 2-year warranty.

To set up the LeakSmart System, you need:



• Wi-Fi



• An iOS or Android phone or tablet



• A free LeakSmart account

## Important Installation Information



### CAUTION:

- Do not install on fire suppression systems/fire sprinkler water lines.
- Never place your fingers inside the Shut-off Valve or Flow Meter.
- Do not grip the plastic motor drive for leverage when installing the valve.
- LeakSmart recommends compliance with all local building and safety codes when installing the Protect by LeakSmart System.
- LeakSmart Hub and Sensors are for indoor use only.
- For outdoor use of the valve, utilize the approved enclosure box available from LeakSmart.

## LeakSmart Hub 3.0 Pre-Installation Customer Setup Requirements

Before installing the LeakSmart Hub 3.0, the customer needs an active LeakSmart account to register the hub.



The homeowner's Wi-Fi network and password are used to activate the hub. It's best practice to get that information before starting the installation process.

- 1 Download the LeakSmart app from the Apple App Store or Google Play on your smart phone or tablet.



- 2 Open the app and tap **create an account**.
- 3 Follow the instructions in the app to create your account.
- 4 Create a password that:
  - Is between 8-19 characters
  - Has at least one number or special character
  - Has at least one capital letter and one lower case letter

## LeakSmart Hub 3.0 Pre-Installation Customer Setup Requirements

- 5 Tap **Next**.
- 6 Review your information and agree to the terms of use.
- 7 Tap **Submit** to create your account.

After you create the account, activate and verify the account.

### Activate Account

- 1 Go to your email.
- 2 Open the email from **noreply@mywateralerts.com**.
- 3 Tap the **activate your account** link in the email.
- 4 Look for the on-screen confirmation.
- 5 Log in to your account in the LeakSmart app.

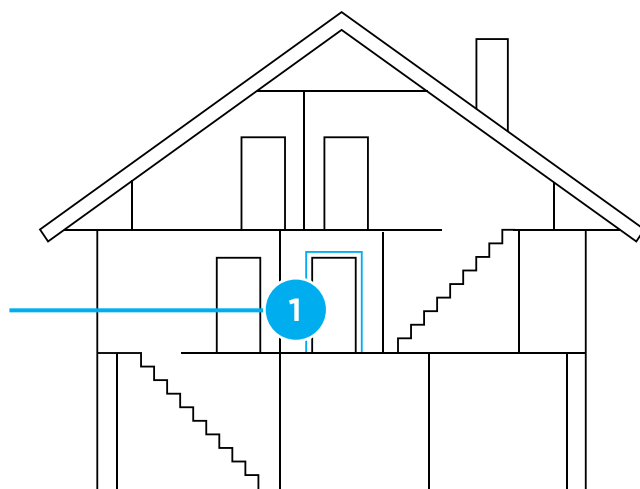


**Note:** Your email will be your LeakSmart account name.

## LeakSmart Hub 3.0 Installation

- 1 Place the hub in a location central to the other LeakSmart devices.
- 2 Plug the hub 3.0 in, using the shorter AC power adapter cord.
  - The hub 3.0 cannot be registered/activated on battery power; it must be plugged in.
  - The included lithium batteries are intended to be a backup in the event of a power outage.

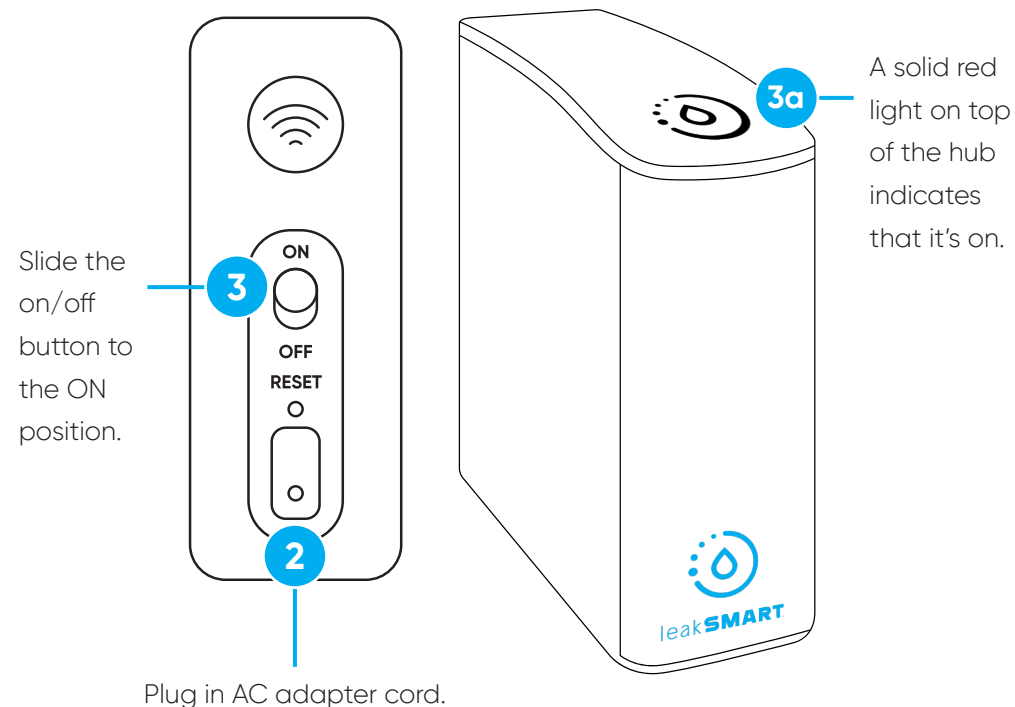
**Central location:**  
place hub in a  
location central to  
other devices.



10

## LeakSmart Hub 3.0 Installation

- 3 Slide the on/off button on the back of hub to the **ON** position.
  - 3a A solid red light on top of the hub indicates that it's on.



11

## Connect the LeakSmart Hub 3.0 to the Home Wi-Fi Network

- 1 Log into the LeakSmart app with homeowner/customer account credentials.
- 2 Tap **Add Hub**.
- 3 Back out of – but do not close – the LeakSmart app.
- 4 Open the phone or tablet settings.
- 5 Open Wi-Fi settings.
  - The LeakSmart Hub should appear in your list of available networks as LeakSmart-XXXX.
  - The four-digit code is the last four digits of the MAC address of LeakSmart Hub. (You can find this number on the battery door of the Hub).
- 6 Confirm that you have successfully connected your phone or tablet to the LeakSmart-XXXX network.
- 7 Return to the LeakSmart app.

## Connect the LeakSmart Hub 3.0 to the Home Wi-Fi Network

- 8 Tap the name of the **homeowner's Wi-Fi network**. (network must be 2.4GHz in order to work).
- 9 Type the homeowner's Wi-Fi password in the password field.
- 10 Tap **Connect**.
- 11 A solid blue light on top of the hub indicates that the hub is connected to the home Wi-Fi network.

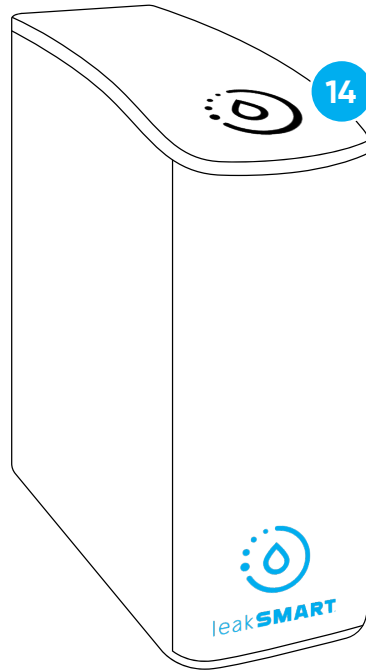


**Note:** After connecting to Wi-Fi, the hub will register itself on the cloud and should appear in the app.



**Note:** If the LeakSmart Hub network does not appear, perform a factory reset.

## Connect the LeakSmart Hub 3.0 to the Home Wi-Fi Network



The hub's LED indicator will turn blue when successfully connected to the home Wi-Fi network.

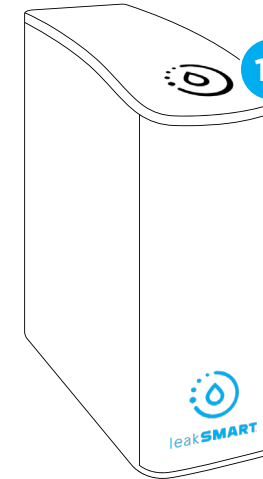
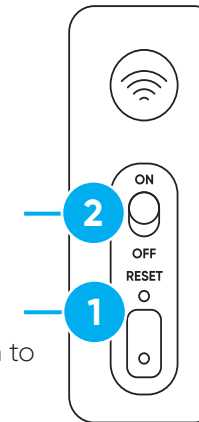
14

## Performing a Factory Reset (If Needed)

- 1 Use a pin (or something with a thin tip) to press and hold the factory reset button on the back of the LeakSmart hub for fifteen-seconds.
- 1a A purple light on top of the hub indicates that the hub is ready for factory reset.
- 2 Turn the hub off, then back on.
- 3 The LeakSmart hub will then show up on the Wi-Fi network.
- 4 Tap **LeakSmart-XXXX** to join the network.

Turn the hub off/on.

Press and hold the reset button to perform a **factory reset**.



A purple light on top of the hub indicates that the factory reset is complete.

15



## Protect by LeakSmart Setup



Keep the LeakSmart valve control head connected to the shut-off valve and place it at the installation location, so you can verify that it is within communication range to the hub.

Power the unit:

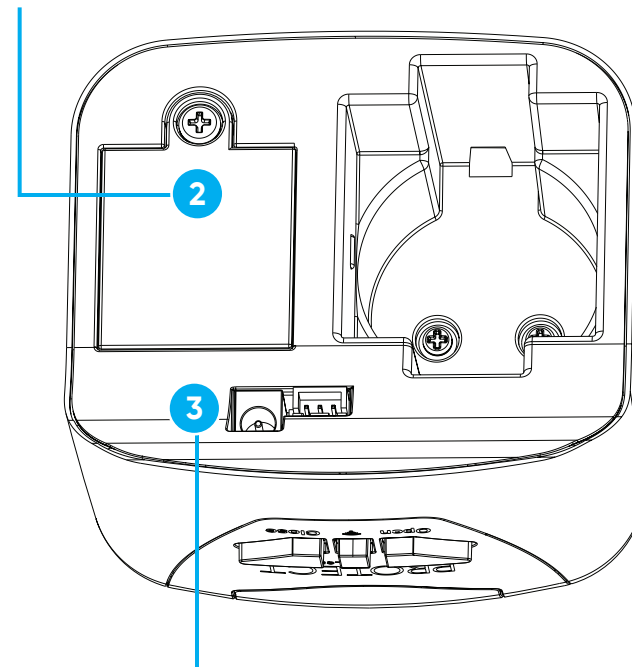
- 1 Open the LeakSmart app and tap **Add Devices**.
- 2 For the valve control head, use a Phillips head screwdriver to open the battery compartment and install four AA batteries.
- 3 Connect the jack of the 9V Supply Cord to the bottom of the valve control head. Then, plug the 9V Supply Cord into an outlet.

### CAUTION:

- Do not replace the four AA batteries with a 9V battery; this will void the warranty.
- If the provided AC power cord isn't long enough to reach the outlet, be sure to replace it with a low voltage extension cord. We recommend the LeakSmart low voltage extension cord.

## Protect by LeakSmart Setup

**Battery compartment:** open with a Phillips head screwdriver and install (4) AA batteries.



**9V Supply Cord Jack:** plug cord into outlet after insertion.

## Pair the Protect by LeakSmart to the Hub 3.0

- 1 Tap **Next** in the LeakSmart app to initialize a three-minute pairing mode.
  - A green light on top of the hub indicates that it's in pairing mode.
  - A blue light on top of the hub indicates that the three-minute pairing mode has ended.
- 2 A double blue light on the valve control head indicates that it's ready to be paired.
- 3 Tap **Next** in the LeakSmart app.
- 4 Press and release the center button on the valve control head to pair it to the hub.
- 5 When the valve control head rapidly flashes blue, or all the lights turn off, you've successfully paired it to the hub.
  - Verify that the valve appears in the app before moving on.

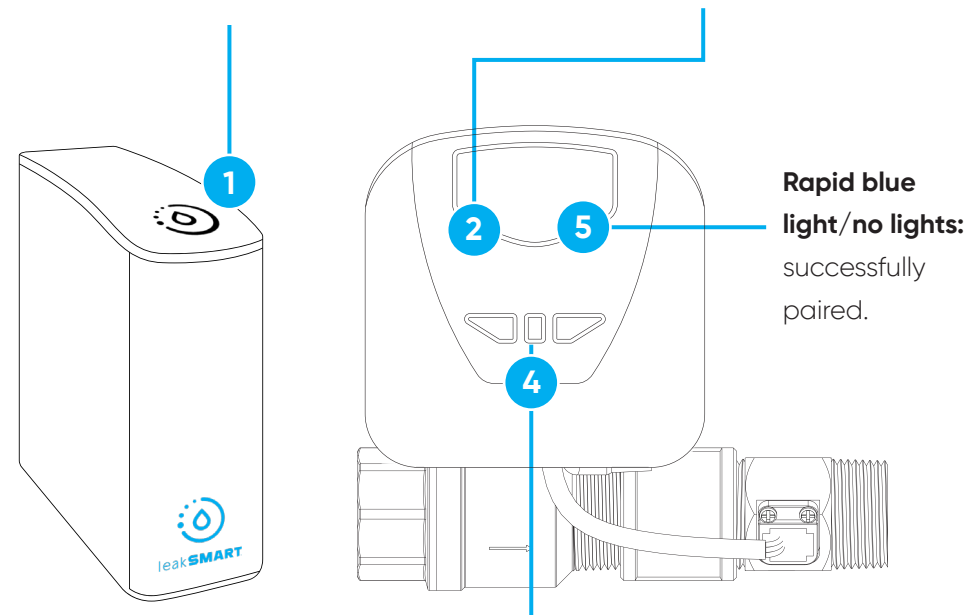


**Note:** The valve may take up to one minute to pair and populate in the app. If the valve fails to pair, push the center button 5 times to reset it and try again.

## Pair the Protect by LeakSmart to the Hub 3.0

**Green light:** pairing mode is active.  
**Blue light:** pairing mode has ended.

**Double blue light:** pairing mode is active.  
**Rapid blue light/no lights:** successfully paired.



**Center button:** press and release to pair to the hub.

## Test Local and Remote Control of the Valve Control Head



Manually test that Protect by LeakSmart can communicate with the hub from the intended install location.

- 1 Press the **Open** button on the front of the valve control head.
  - 1a A steady green light on the front of the valve control head indicates the valve is open.
- 2 Press the **Close** button on the front of the valve control head.
  - 2a A steady red light on the front of the valve control head indicates the valve is closed.

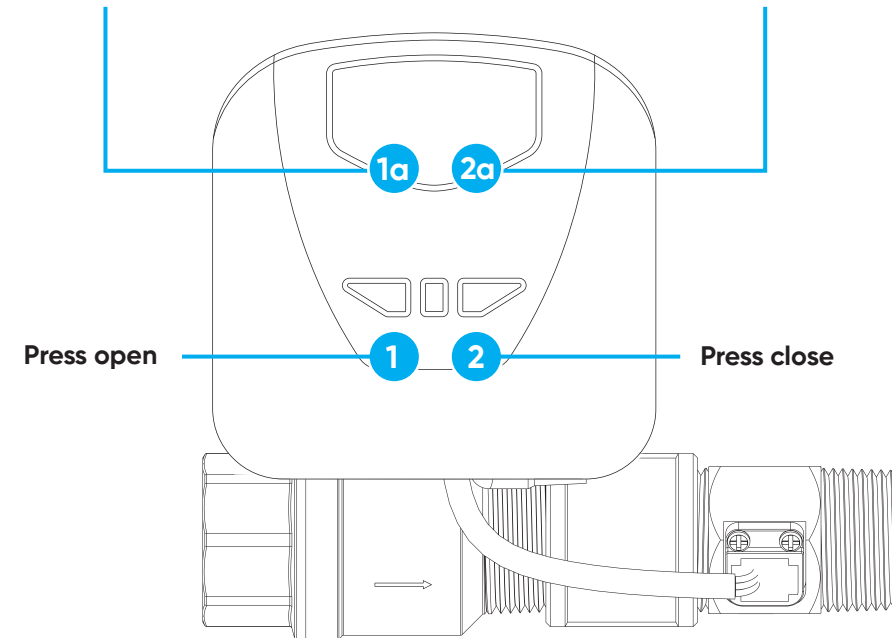
Test the communication using the LeakSmart app.  
On the home screen:

- 1 Tap the **Open** button.
- 2 Then tap the **Close** button.

## Test Local and Remote Control of the Valve Control Head

**Green light:** indicates valve opening.

**Red light:** indicates valve closing.



## Protect by LeakSmart Flow Meter Shut-Off Valve Installation\*



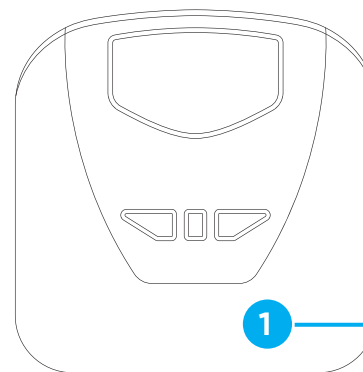
Before starting the installation process, be sure that you have all the necessary components, fittings, and other equipment required for installation.

### Pre-Installation Assembly

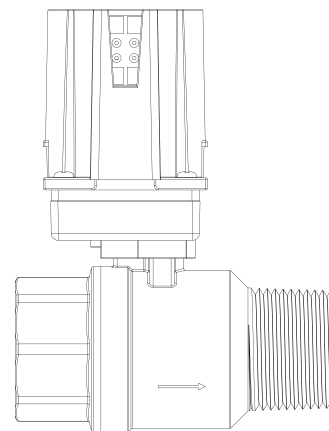
- 1 Remove the valve control head from the shut-off valve. Set the valve control head aside to avoid potential damage.
- 2 Using the included coupling, assemble the flow meter downstream from the shut-off valve. Use pipe dope or thread tape (not included) on the mating threads.

\*Only available on protect with flow models

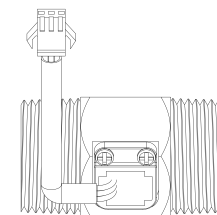
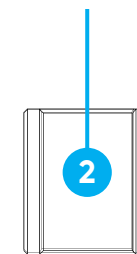
### Pre-Installation Assembly



**Valve control head:**  
remove from the shut-off  
valve and set aside.



**Flow meter coupling:**  
assemble downstream  
from the shut-off valve.



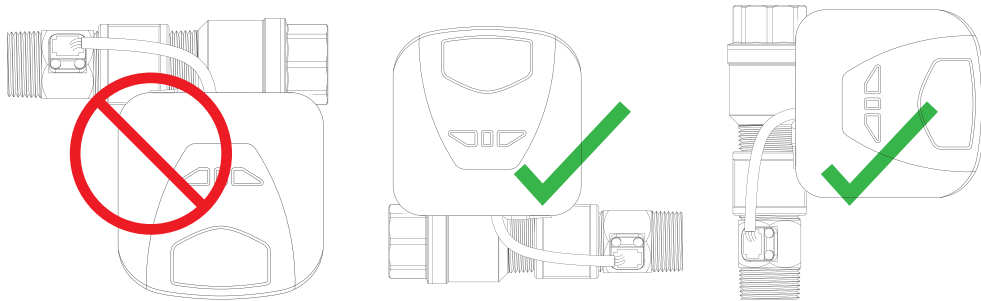
**Pipe dope/thread tape:**  
use on mating threads.



**Direction of Flow** →

## Installation Assembly

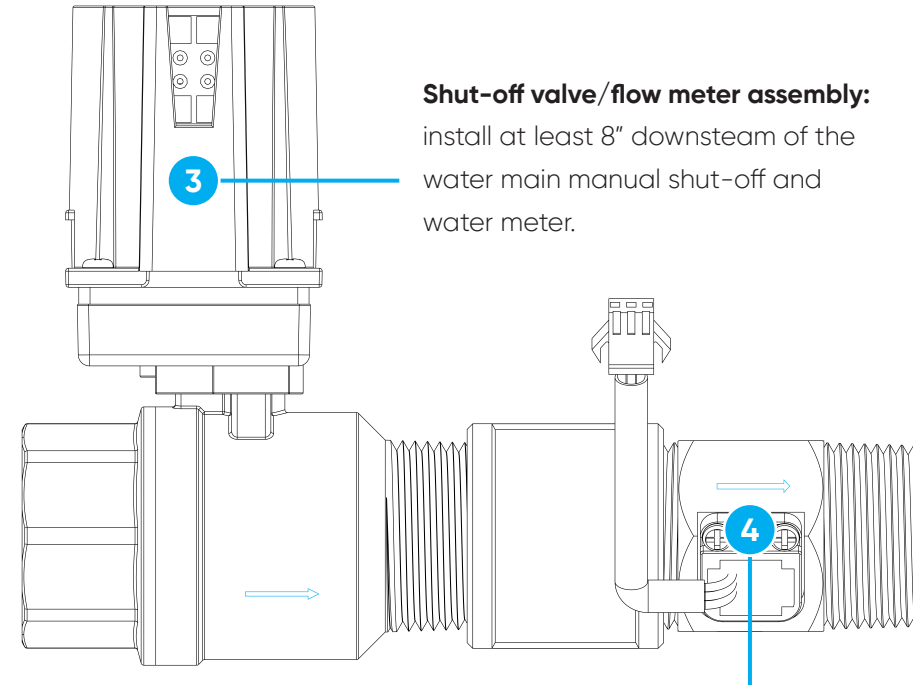
- 1 Turn off the main water supply.
- 2 Locate the lowest fixture and drain the main water line (turn on the hot and cold water until no more water comes out).
- 3 Install the shut-off valve/flow meter assembly.
- 4 Position the shut-off valve/flow meter assembly.



### ⚠ CAUTION:

- Install the valve so that the controller will rest vertically or horizontally, **NOT upside down**.
- Do not solder fittings near the water meter or the Protect by LeakSmart valve system to prevent heat from affecting the devices.

## Installation Assembly



### Shut-off valve/flow meter assembly:

install at least 8" downstream of the water main manual shut-off and water meter.

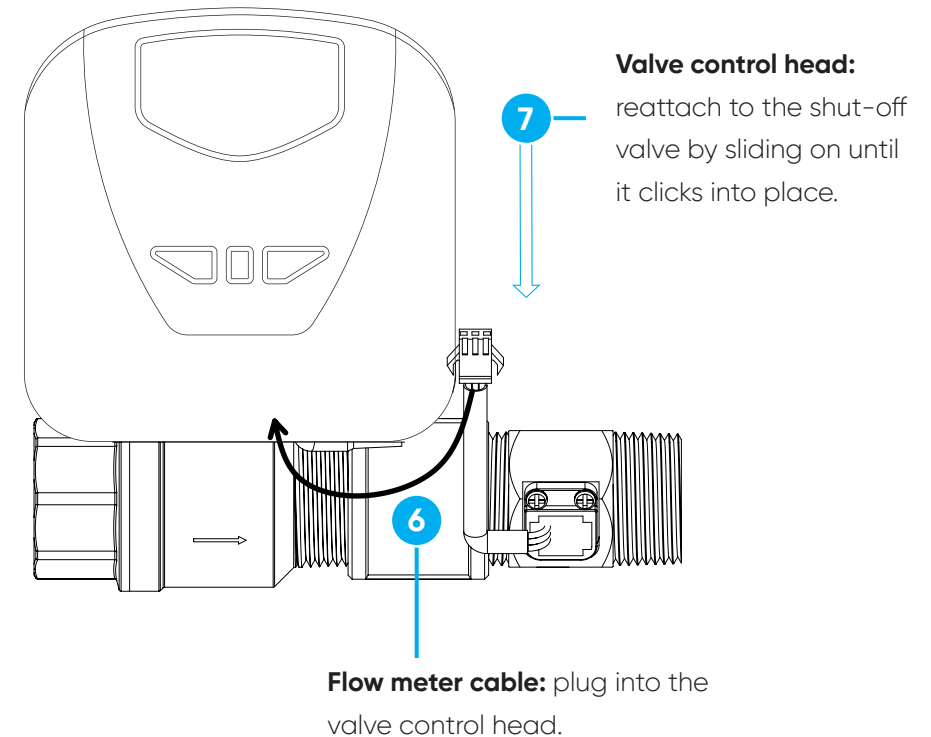
### Shut-off valve/flow meter assembly:

position so that the arrow is pointing away from the water meter.

## Installation Assembly

- 5 Once you've installed the assembly, turn on the main water valve.
- 6 Plug the flow meter cable into the valve control head.
- 7 With the front of the valve control head facing you, reattach the valve control head to the shut-off valve by sliding it over the motor housing until it clicks into place.
  - Ensure that the valve control head is firmly engaged on the shut-off valve.

## Installation Assembly



## Installation Assembly

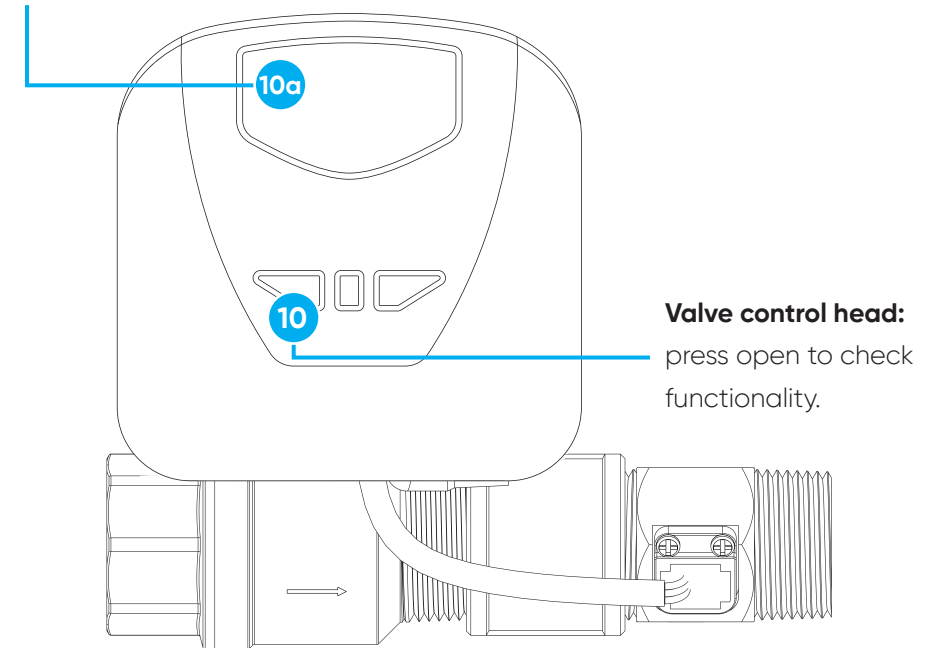
- 10 Press the **Open** button on the front of the valve control head to check the functionality.
  - 10a A flashing green light indicates that the valve is opening.
  - 10b A steady green light indicates that the valve is open and water will run through the valve.
- 11 Turn off the lowest hot and cold fixture and check for leaks.

### CAUTION:

- Be aware of the water hammer effect when first opening the valve. There may be air remaining in the plumbing lines from cutting in... the valve. Once the air is released, your system will go back to normal pressure.

## Installation Assembly

**Green light:** indicates open/opening.



## Protect by LeakSmart Operation Validation



For testing of flow meter functionality, ensure the main water is on, fixtures are closed and the valve is open.

- 1 Return to the LeakSmart app.
- 2 Tap **Valve** to go to the valve detail screen.
- 3 Tap **Current Flow** to open the Current Flow Rate detail screen.
- 4 Confirm that the flow rate is at 0 gallons/minute.
- 5 Turn on a hot and cold fixture.
- 6 While the valve is open and water is running through it, confirm that the flow rate is reporting on the Current Flow Rate screen.
- 7 Turn off the fixture and leave the valve open.

## Protect by LeakSmart Operation Validation



Confirm that the flow rate is at 0 gallons/minute.



Turn on a hot and cold fixture.



While the valve is open and water is running through it, confirm that the flow rate is reporting on the Current Flow Rate screen.



Turn off the fixture and leave the valve open.



## LeakSmart Wi-Fi Sensor Setup and Operation



**Note:** Setup requires a **Phillips head screwdriver**.

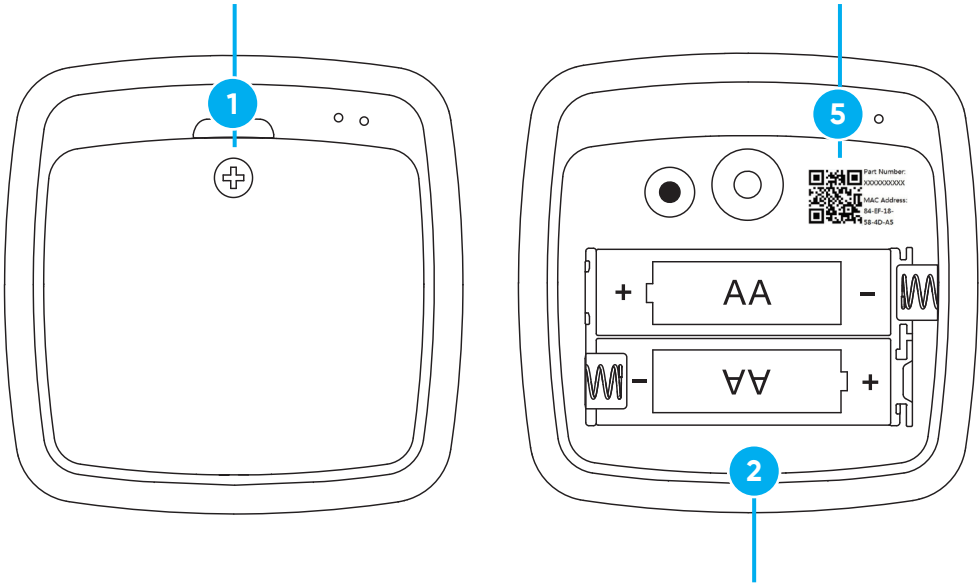
- 1 Use the Phillips head screwdriver to remove the battery compartment door from the LeakSmart Wi-Fi Sensor.
- 2 Install the two provided AA batteries, but **DO NOT REPLACE THE BATTERY DOOR.**
  - A chirp from the sensor indicates that the batteries have been installed.
- 3 Open the LeakSmart app on your phone or tablet.
- 4 Tap **Add Devices** from the home screen and choose **SENSOR.**

## LeakSmart Wi-Fi Sensor Setup and Operation

- 5 Next, choose **OK** to indicate there is a QR Code in the battery chamber.

**Battery compartment:** temporarily remove door using Phillips head screwdriver.

Choose **OK** in the app to indicate your sensor has a QR code.



**AA batteries:** install two batteries after temporarily removing battery door.

## LeakSmart Wi-Fi Sensor Setup and Operation

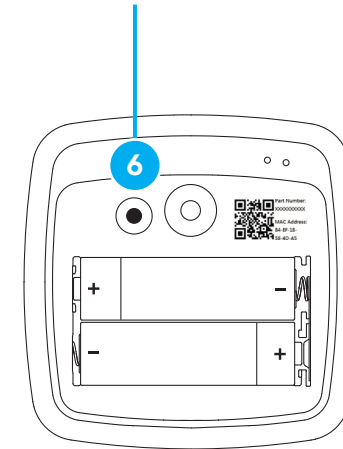
- 6 Press the black button inside the battery compartment of the LeakSmart Sensor one time.
- 7 Select the Wi-Fi network and enter the password.
  - 7a When the pairing is successful, a green light on top of the sensor will blink slowly five times, and you'll hear three quick beeps.
- 8 The sensor will now be visible within the app on the home screen.
- 9 With the sensor successfully paired, replace the battery compartment door.



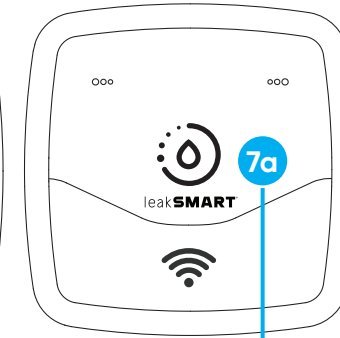
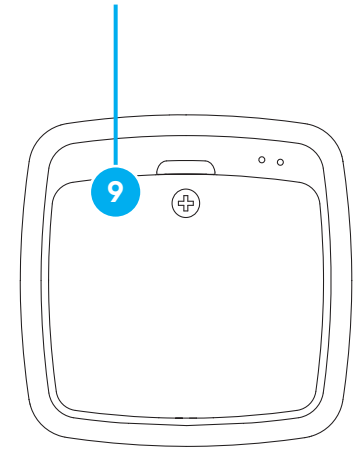
**Note:** Pairing mode will last for sixty seconds. If you don't successfully pair the sensor(s) before the sixty-second pairing mode ends, you'll have to start over at step 4.

## LeakSmart Wi-Fi Sensor Setup and Operation

**Black button:** to pair the sensor to the hub, press this button once.



**Battery compartment:** replace door once sensor is successfully paired.



**Sensor:** five slow flashes from the LED light and three quick beeps indicate that the pairing is successful.

## Temperature & Humidity Settings & Alerts

- 1 Select the sensor in the app to set temperature and humidity limits by sliding the toggle button from left to right.
  - 1a If you are worried about freezing pipes, we recommend setting the lower temperature to 20 F
  - 1b If you are worried about humidity causing mold, we recommend setting the upper humidity limit to 40%.
- 2 Activate alerts for movement by also sliding the toggle button left to right.
  - 2a The movement sensor notifies you if the sensor has been accidentally moved or flipped over.

## Protect/Detect Settings & Alerts

- 1 Select the sensor in the app to configure Protect or Detect settings
  - 1a **Tap Protect** to have this sensor automatically shut off the water and send alerts when it detects a leak. This mode requires a previously installed LeakSmart shut-off valve
  - 1b Tap **Detect-Only** to have this sensor only send alerts when it detects a leak.
- 2 Tap **Finish**.

## Alert Setup

- 1 Open the LeakSmart app.
- 2 Tap **Alerts** .
- 3 Customize alerts to your preference.

## Adding Alert Contacts

- 1 Tap **Add Contact** (You may add up to 20 contacts).
- 2 Type contact's name.
- 3 Toggle on **Email Alerts** and type the contact's email address.
- 4 Toggle on **Text Message** alerts and type the contact's phone number.
- 5 Tap **Done** to save added contact(s).

## Test Leak Simulation

Now that the complete system is installed, simulate a leak to test the response.

- 1 Ensure your valve is in the open position.
- 2 Press and hold the damp cloth to the gold pins on the back of a sensor, so that the sensor begins to beep.
- 3 If this sensor is set to **Protect** mode, confirm that the valve closes.
- 4 Look for the banner at the top of the LeakSmart App to turn red. Confirm that your contacts receive the email and/or text alerts that a leak has been detected. If alerts are not received, tap **Alerts** in the app and check that they are turned on.

## Clearing Test Leaks

- 1 Dry off the metal pins and the back of the sensor.
- 2 Place the sensor in it's location.
- 3 Confirm the banner at the top of the LeakSmart App turned green. (System OK)
- 4 Open the valve.

## FCC Compliances:

### Hub 3.0 Compliance:

FCC ID: 2A05J-WLSHUB3, CONTAINS FCC ID: TLZ-CU300 | IC ID: 23626-WLSHUB3, CONTAINS IC ID: 6100A-CU300

This equipment has been tested and found to comply with the limits for a Class B digital device, pursuant to part 15 of the FCC Rules. These limits are designed to provide reasonable protection against harmful interference in a residential installation. This equipment generates, uses and can radiate radio frequency energy, and if not installed and used in accordance with the instructions, may cause harmful interference to radio communications. However, there is no guarantee that interference will not occur in a particular installation. If this equipment does cause harmful interference to radio or television reception, which can be determined by turning the equipment off and on, the user is encouraged to try to correct the interference by one or more of the following measures:

- Reorient or relocate the receiving antenna
- Increase the separation between the equipment and the receiver
- Connect the equipment into an outlet on a circuit different from that to which the receiver is connected
- Consult the dealer or an experienced radio/TV technician for help

### Valve and Sensors Compliance:

FCC: W72-ZICM357SP1 | IC:8254A-ZICM357SP2

This equipment has been tested and found to comply with the limits for a Class B digital device, pursuant to part 15 of the FCC Rules. These limits are designed to provide reasonable protection against harmful interference in a residential installation. This equipment generates, uses and can radiate radio frequency energy, and if not installed and used in accordance with the instructions, may cause harmful interference to radio communications. However, there is no guarantee that interference will not occur in a particular installation. If this equipment does cause harmful interference to radio or television reception, which can be determined by turning the equipment off and on, the user is encouraged to try to correct the interference by one or more of the following measures:

- Reorient or relocate the receiving antenna
- Increase the separation between the equipment and the receiver
- Connect the equipment into an outlet on a circuit different from that to which the receiver is connected
- Consult the dealer or an experienced radio/TV technician for help

## FCC Compliances:

### Sensors Compliance:

Contains FCC ID: 2AC7Z-ESPWROOM32D | IC: 21098-ESPWROOM32D

This equipment has been tested and found to comply with the limits for a Class B digital device, pursuant to part 15 of the FCC Rules. These limits are designed to provide reasonable protection against harmful interference in a residential installation. This equipment generates, uses and can radiate radio frequency energy, and if not installed and used in accordance with the instructions, may cause harmful interference to radio communications. However, there is no guarantee that interference will not occur in a particular installation. If this equipment does cause harmful interference to radio or television reception, which can be determined by turning the equipment off and on, the user is encouraged to try to correct the interference by one or more of the following measures:

- Reorient or relocate the receiving antenna
- Increase the separation between the equipment and the receiver
- Connect the equipment into an outlet on a circuit different from that to which the receiver is connected
- Consult the dealer or an experienced radio/TV technician for help

Encuentra nuestro manual en español en [LeakSmart.com/support/manuals/](https://LeakSmart.com/support/manuals/)

Register your system at [LeakSmart.com/support/registration/](https://LeakSmart.com/support/registration/)

Troubleshooting: [LeakSmartPro.com/support/troubleshooting/](https://LeakSmartPro.com/support/troubleshooting/)

LeakSmart is compatible with other smart home products. Check out [LeakSmart.com/integrations](https://LeakSmart.com/integrations)

**⚠ WARNING**

This product can expose you to chemicals including lead which is known to the State of California to cause cancer, birth defects and other reproductive harm. For more information, go to [www.P65Warnings.ca.gov](http://www.P65Warnings.ca.gov)



NSF/ANSI 61



**Questions? Contact our technical service team:** 855-532-5457

Designed in the U.S.A. Made in China.

Y88501PM © 2021 LeakSmart, Inc. All rights reserved.