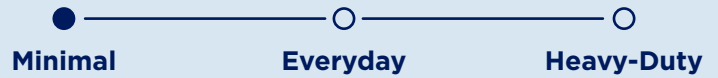




## SUITABLE COOKING STYLE &amp; FEATURES:

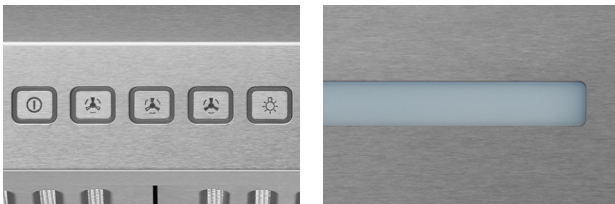


## UC-B018

## CONTEMPORARY STYLE UNDER CABINET

SIZES: 30"

## PRODUCT DESCRIPTION



At Hauslane, we know under cabinet range hoods don't have to be bulky eyesores to deliver superior performance. That's why we're proud to offer range hoods like our UC-B018 model in stainless steel. Don't let the compact appearance fool you. This stainless steel range hood vent delivers the ideal amount of suction power for home kitchens like yours. With its three-way venting, you'll never have to choose between a delicious meal and a fresh-smelling kitchen again.

## WHAT'S INCLUDED

Dishwasher-Safe Hybrid Filters (2), Top / Rear 3 1/4" x 10" Rectangular Exhaust Adapter (1) and Top 7" Round Adapter (1)

## OVERALL PRODUCT DIMENSIONS (WxDxH)

UC-B018SS 30": 29 3/4" x 19 5/8" x 5 7/8"

## WARRANTY

2-Year Limited Warranty and Lifetime Warranty on Motor



## FEATURES &amp; BENEFITS:

## KEEP YOUR KITCHEN CLEAN:

If you're like a lot of people, your kitchen is the busiest and messiest place in your home. This stainless steel range hood keeps things looking and smelling fresh by sucking away odors, fumes, and chemicals. That means more time to enjoy your favorite meals and less time cleaning.

## DOUBLE FILTRATION SYSTEM:

The hybrid filter features aluminum layers to grab grease particles from fumes while the charcoal filters (CFI004, sold separately) deodorize cooking smells.

## VERSATILE VENTING SYSTEM:

The kitchen hood vent has a versatile, 3-way ventilation system (vertical 7" round, vertical 3 1/4" x 10" rectangular, or horizontal 3 1/4" x 10").

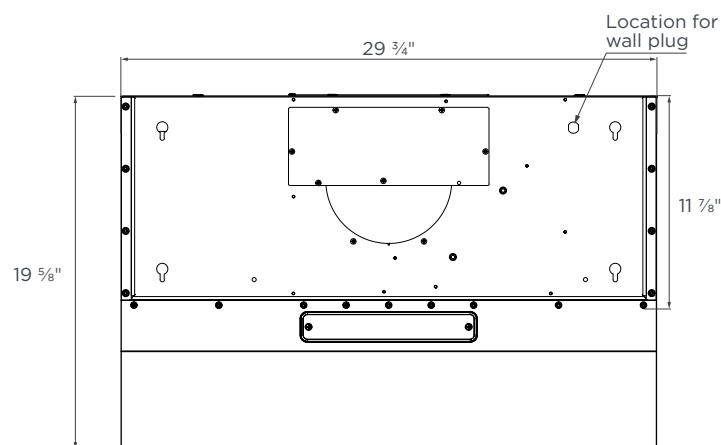
## DISHWASHER-SAFE BAFFLE FILTERS:

We know your time is valuable. That's why we design our under cabinet range hood to be simple to clean and maintain. Pop out the baffle filters and run them in your next dishwasher cycle. Simple.

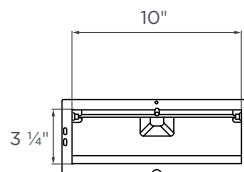
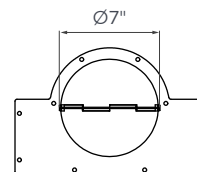
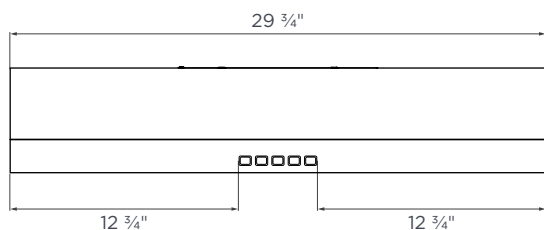
## ADA COMPLIANT PRODUCT:

This ADA compliant range hood can be operated via remote control (HLRC1, sold separately), enhancing safety for users of all abilities.

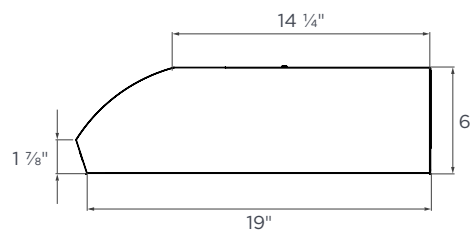
## TECHNICAL DRAWING



TOP

TOP / REAR RECTANGULAR  
EXHAUST ADAPTERTOP ROUND  
EXHAUST ADAPTER

FRONT



SIDE

## SPECIFICATIONS

SIZE	30"
STYLE	Under Cabinet
RECIRCULATING	Yes (Charcoal Filters Required)
CLEANING FUNCTION	N/A
NOISE LEVEL	2.5 to 6.5 Sones
LIGHT COLOR TEMP.	Warm / 3000 Kelvin
LUMENS	200
LIGHT BULB	3W LED (Integrated)
LIGHT INTENSITY	1 Level
DELAY FUNCTION	Yes
CONTROL	Touch Buttons
SPEED SELECTIONS	3 Levels
SPECIAL FEATURES	Dishwasher-Safe Hybrid Filters / ADA Compliant (Remote Sold Separately. P#: HLRC1)

COOKING STYLE	Minimal
EQUIVALENT AIRFLOW	400 CFM
LABORATORY AIRFLOW	250 CFM
TOP VENTING	7" Round or 3 1/4" x 10"
REAR VENTING	3 1/4" x 10"
MOTOR	Single
AMPERAGE	1.2
WATTAGE	144
VOLTAGE	120
CONNECTION	Plug-In
GROSS WEIGHT, LBS.	28.3
NET WEIGHT, LBS.	23.5
DIMENSIONS (WxDxH)	29 3/4" x 19 5/8" x 6"