

DeNova Detect®

Smarter Gas Leak Safety

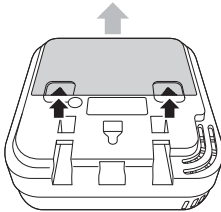
Quick Start Guide

Models DD620NV and DD622NCV

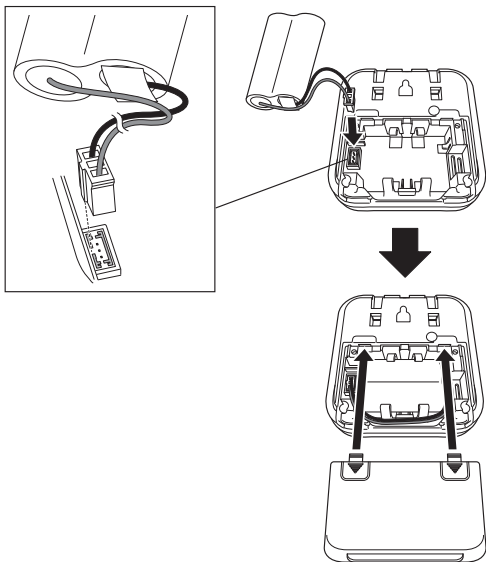
Battery Installation

To install the included batteries:

- Open the clear battery compartment cover on the back of the Gas Alarm. This cover slides out of place. To open, place both thumbs on the grooved arrows on the back of the battery cover where the battery cover hooks snap into place.
- Push down on the grooved arrows with your thumbs and slide the cover off. Some force is required.



- Connect the batteries by inserting the battery harness plug into the Gas Alarm receptacle as shown in the diagram below. **Do NOT remove the plastic wrap surrounding the batteries.**



- The battery harness plug has a large notch on it that faces to the left away from the Gas Alarm when installed correctly. There is only one way in which the plug can be installed. A small portion of the plug will be exposed when connected properly.

If replacing the batteries, refer to "Gas Alarm Disposal" section for instructions on disposing of the old batteries.

Test Your Alarm

Test the alarm by pressing the "Test" button before mounting and after mounting.

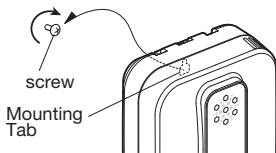
Refer to the "Testing the Gas Alarm Functions" section of the User's Manual for complete instructions.

Mounting the Gas Alarm

The Gas Alarm may be mounted to the wall or a pipe in a location meeting the criteria discussed in the "Selecting Gas Alarm Location" section of the User's Manual.

To Mount the Gas Alarm to a Wall:

- (1) Tools you will need: Drill with 3/16" or 5 mm drill bit, Phillips head screwdriver, hammer.
- (2) Tools supplied: A plastic screw anchor and screw have been provided in the box.
- (3) Choose a location on the wall within 12 inches (0.3 meters) from the ceiling. Make a mark on the wall where you will drill the mounting hole.
- (4) Use a 3/16" (5 mm) drill bit to drill the mounting hole and insert included plastic screw anchor into the hole.
- (5) Tighten the screw into the anchor until the screwhead is about 3/16" (5 mm) away from the wall, leaving enough space for the screw to insert into the keyhole slot on the back of the Gas Alarm as shown.
- (6) Hang the Gas Alarm on the screw.
- (7) It is very important to test this alarm after installation by pressing the test button. Refer to the "Testing the Gas Alarm Functions" section of the User's Manual for complete instructions.



Contact Information

DeNova Detect
650 Warrenville Rd, Suite 101
Lisle, IL 60532 USA
Phone: 847.749.3064
support@denovadetect.com
denovadetect.com

FOLLOW US

@denovadetect



denovadetect.com