



Making a PEX Press Connection

Making a PEX Press connection is fast, reliable, and permanent. Follow these five simple steps to ensure a secure installation every time.



Step 1

Cut and check the pipe

- Use a PEX cutter to make a square, clean cut on the pipe. Do not use a saw or damaged tool.
- Ensure the pipe is free of burrs, debris, or damage before pressing.



Step 2

Insert the fitting

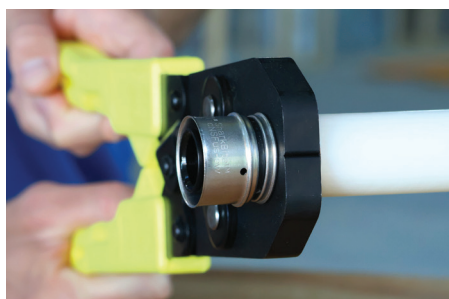
- Slide the SharkBite PEX Press fitting onto the pipe until it reaches the fitting shoulder.
- Verify full insertion by checking the pipe insertion indicator viewing holes.



Step 3

Position the Press tool

- Open the jaws of the PEX Press tool and align them squarely over the stainless steel press sleeve on the fitting.



Step 4

Press the connection

- Activate the tool fully until it completes the cycle and jaws are completely closed.
- The jaws will press the sleeve uniformly around the pipe.



Step 5

Inspect the Joint

- Verify the sleeve is evenly compressed with no gaps.



The most up to date warranty and warranty can be found at sharkbite.com